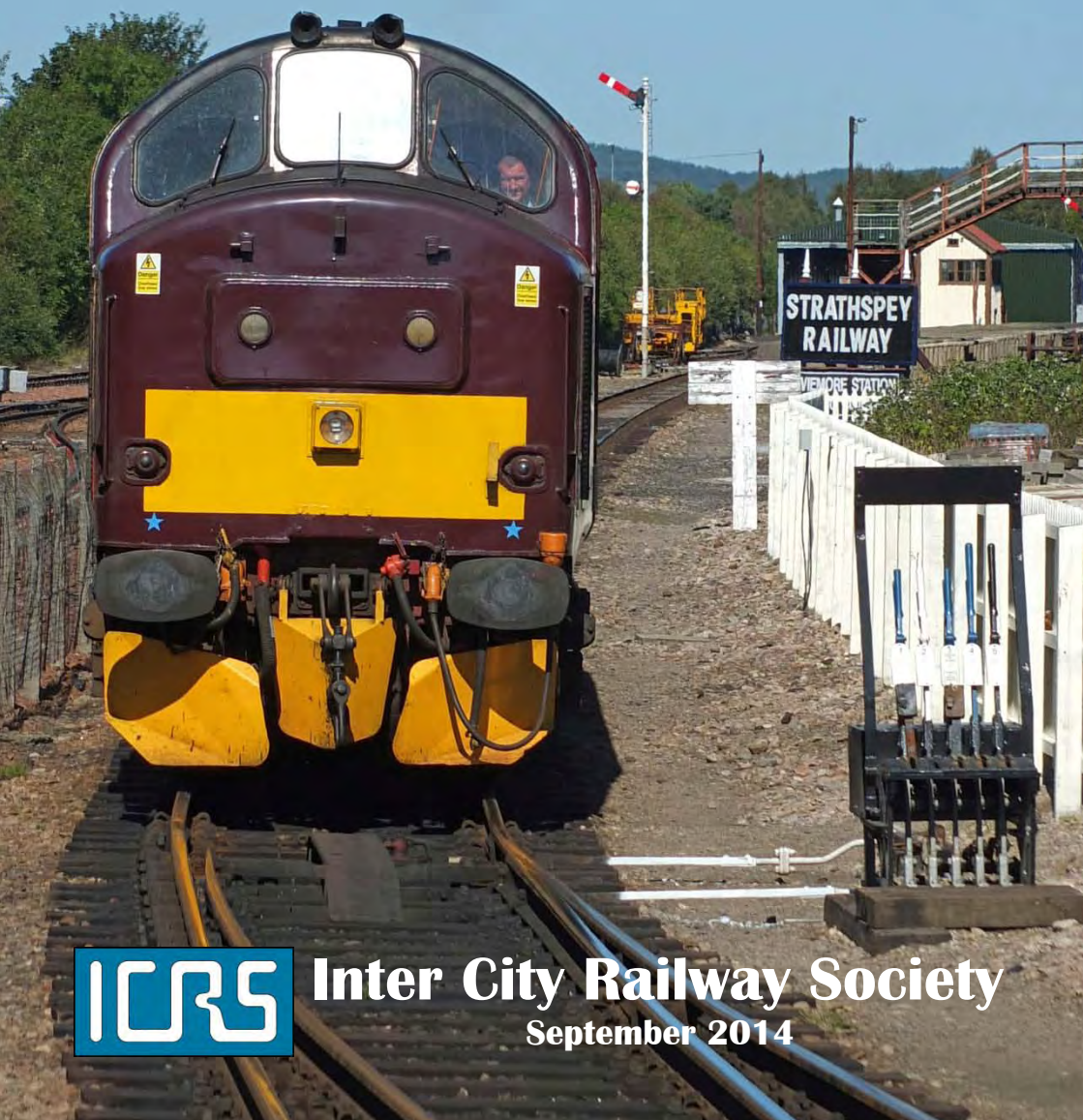


TRACKS



Inter City Railway Society
September 2014



Inter City Railway Society

founded 1973

www.intercityrailwaysociety.org

Volume 42 No.9

Issue 501

September 2014

The content of the magazine is the copyright of the Society
No part of this magazine may be reproduced without prior permission of the copyright holder

President:	Simon Mutton	(01603 715701)
	Coppercoin, 12 Blofield Corner Rd, Blofield, Norwich, Norfolk NR13 4RT	
Chairman:	Carl Watson - chairman@intercityrailwaysociety.org	Mob (07403 040533)
	14, Partridge Gardens, Waterlooville, Hampshire PO8 9XG	
Treasurer:	Peter Britcliffe - treasurer@intercityrailwaysociety.org	(01429 234180)
	9 Voltigeur Drive, Hart, Hartlepool TS27 3BS	
Membership Sec:	Trevor Roots - membership@intercityrailwaysociety.org	(01466 760724)
	Mill of Botary, Cairnie, Huntly, Aberdeenshire AB54 4UD	Mob (07765 337700)
Assistant:	Christine Field	
Secretary:	Stuart Moore - secretary@intercityrailwaysociety.org	(01603 714735)
	64 Blofield Corner Rd, Blofield, Norwich, Norfolk NR13 4SA	
Events:	Louise Watson - events@intercityrailwaysociety.org	Mob (07921 587271)
	14, Partridge Gardens, Waterlooville, Hampshire PO8 9XG	
Magazine:		
Editor:	Trevor Roots - editor@intercityrailwaysociety.org	
Sightings:	James Holloway - sightings@intercityrailwaysociety.org	(0121 744 2351)
	246 Longmore Road, Shirley, Solihull B90 3ES	
Traffic News:	John Barton - news@intercityrailwaysociety.org	(0121 770 2205)
	46, Arbor Way, Chelmsley Wood, Birmingham B37 7LD	
Website:		
Manager:	Trevor Roots - website@intercityrailwaysociety.org	(01466 760724)
	Mill of Botary, Cairnie, Huntly, Aberdeenshire AB54 4UD	Mob (07765 337700)
Assistant:	Christine Field	
Yahoo Administrator:	Steve Revill	
Books:		
Publications Manager:	Carl Watson - publications@intercityrailwaysociety.org	
Publications Team:	Trevor Roots / Carl Watson / Eddie Rathmill / Lee Mason	

Contents:

Officials Contact List.....	2	Out & About Sightings.....	27-31
Society Notice Board.....	3-4	Stock Changes	44
Events.....	4	Traffic & Traction News.....	14-23
ICRS Sales	48	Transferred Stock	
GBBG Advert	42	Feature Articles:	
Current News / Sightings:		Eastleigh Works Report	5-8
Franchise News	23	Miscellaneous Locos.....	32
Freight Matters	43	Preservation Galas	9-13
Stirlingshire Sightings.....	34	Preservation Photo Spot	5
Infrastructure News	24-26	Preservation News.....	33
Light Rail & Metro News	37	Rail Tour News	35
Liveries	44-46	Railway Globetrotters.....	38-42
New Stock.....	47	Ramblings of a Rail Enthusiast.....	36-37

Front Cover Photo: 37685 was commandeered from the Royal Scotsman, leaving 37516 to soldier on alone, to provide traction for the Strathspey Railway (STP) on Wednesday 27th August 2014 in place of advertised steam traction, as none of STPs steam locos were available. It ran three services alternating with DMU 51402 ++ 51367 (see **PRESERVATION NEWS**). It is seen running round its second service at 14.05 (the 12.30 from Broomhill) at Aviemore just 5 mins after 68006 had passed southbound on the adjacent mainline...drat, nearly a good combo !

£1.70 where sold separately

Printed & distributed in the UK by Henry Ling Limited, at the Dorset Press, Dorchester DT1 1HD

SOCIETY NOTICE BOARD

Editor's Comments:

Hope you all enjoyed the 64 page August issue but it's back to 48 pages this month. However let's see what Santa brings !! No room to waffle except to make a plea to members to inform me (membership hat on) asap of any changes in contact details or address. This is becoming a problem with PayPal accounts. It is easy to overlook changing your details when you move and it has certainly caused a few headaches with new members, but it has led to a revised method to check addresses when processing membership via PayPal. However existing members also need to be aware and check their account details are correct, as books in particular may get sent to the wrong address.

For those with internet access, the date when the current issue of **TRACKS** has been posted out from the printers is now shown on the **TRACKS** web page. This should help if you wonder if it has come out or you think your copy has gone missing. It normally takes a couple of days to deliver.

Membership Matters:

Subscriptions: Annual - £16.00, Five year - £75.00 (saving £5.00 & hedging against future rises) ICRS Membership gives you:

- a high quality full colour 48 page monthly magazine **TRACKS** - covering all aspects of railways.
- up to 30% discount on all ICRS books (7 currently available).
- occasional members only visits to railway facilities.
- the latest issue of **TRACKS** emailed (on request) 10 days prior to receiving printed version.
- an informative website, with access and indexes to previous issues of the magazine.
- 10% discount on Ian Allan books (direct sales from IA only).

New Members: (* re-joined)

Paul Alder (Salisbury), Peter Bailey* (Grimsby), Alan Bartlett* (Ashford), Nik Bartlett* (Ashford), Paul Gosden (Leighton Buzzard), Keith Hookham* (Hinckley), Malcolm Hooper (Plymouth), Shawn Pankhurst (Chertsey), Roger Smith (Broughton Astley), Trevor Waby (Ilkeston), Colin Wilson* (Bourne) - a warm welcome to you all.

Errata: Though I got 8 out of 9 correct, I mistyped Roger Thomas incorrectly under the Crewe ICRS stand photo...oops. On p.13 70013 should have read 70003 passing Crewe Gresty Bridge. Also I somehow left off the last 25 Stirlingshire & Gloucestershire Location Codes from TF to YT on p.49, as it seems I also did in July and they were prefixed Stirlingshire Sightings..... a hangover from the June issue when there was no Gloucestershire Sightings....double oops !!

Membership Renewal: When your membership is due for renewal / overdue this will be indicated on the **TRACKS** address carrier sheet with your expiry date. **Therefore please check your address carrier sheet with your copy of TRACKS...before you dispose of it.** The reverse of the carrier sheet will be printed with a Renewal form, which can be returned or not depending on the method of payment (see below). If no renewal is forthcoming after a second Final Reminder, your membership will be deemed to have lapsed. **Please make sure you complete the Date of Birth section and provide a telephone contact number. If you are ex-directory, don't worry as it will not be revealed to any third parties but it is important that we have a contact number other than by post, which is a costly way to communicate and not covered by the low membership fee.** As a helpful 'reminder', members who have set up a bank standing order will have a note to that effect above your name on the front of the carrier sheet but no renewal form on the reverse. Hopefully then no one will renew twice, as has happened !!

Methods of Payment:

Please note we cannot accept credit card payments over the telephone.

Internet Banking (BACS) / Standing Order: This is the preferred most cost effective, secure and quickest way of paying, for you and the Society and ensures we get the full amount. Bank details will be included on your renewal form.

Cheque or Postal Order: Please make payable to ICRS and return your remittance with the form to: Trevor Roots (Membership Secretary) ICRS Membership Renewal, Mill of Botary, Cairnie, Huntly, Aberdeenshire AB54 4UD

PayPal: Pay by credit card or debit card via PayPal on the website, however this incurs a cost to the Society (currently £0.74 for £16 & £2.75 for £75)

Please provide your first name and a landline telephone number, whether joining or renewing and your email. If you renew in the first week of the month, whilst **TRACKS** is at the printers, you may receive a Renewal / Reminder form but do not worry as the admin process will naturally see things cross in the post. Please also note that cheques are not presented to the bank until the first week of the following month. As well as receiving a new card, renewals will be acknowledged where possible by email.

NB. When using PayPal, please read and follow the instructions on the relevant web page.

Membership Cards: Your membership is valid until the end of month as shown by the first two numbers. For those who joined from mid 2009, the second two numbers are the year. Cards will be sent as soon as practicable following your renewal, separate from **TRACKS** distribution. No card is sent to overseas members.

TRACKS Magazine:

If you so request, the very latest issue of **TRACKS** will be emailed as a pdf when it goes off to the printers so you will get it 'hot off the press' 10 days before you receive the printed version. That means you have the latest news, some within days of the event occurring. Please email the editor, Trevor Roots at editor@intercityrailwaysociety.org to receive the latest issue by email in addition to the printed version. Similarly the last 11 months are also available by email, but only to members.

Submissions:

Articles: Any information / article on any railway related item will be most welcome for inclusion in the magazine. Your visits, travel stories or anecdotes about any part of the railway network, past or present, home or abroad can give pleasure to others or inform of places to visit. This railway hobby of ours is made all that more enjoyable by the sharing of information, knowledge and experiences. Neatly hand written submissions are perfectly acceptable, but ideally a typed document is preferable. Better still, if you have a PC and internet connection then send an email.

Photos: Good quality photographs are always welcome, preferably high res jpeg digital photographs via email (**not compressed please**), but prints are acceptable. Please send an SAE if you wish them returned. Please include full contact details with any submissions, including your first name.

The latest date for articles / info for the **October 2014** issue is **Friday 26th September 2014**
with delivery to members after **Friday 10th October 2014**
please check the **TRACKS** page on the website for date of posting from the printers

Magazine Distribution: **TRACKS** is distributed direct from the printers to members in a clear plastic wrapping with an address carrier sheet (reverse printed with a Renewal / Reminder form if appropriate). If any member fails to receive their copy after one week from the above estimated delivery date then please contact the **editor**.

Magazine Contributors: Thanks to **John Barton, Paul Bright, Joshua Brown, Andrew Buckley, Brian Cowell, Brian Derricote, Bob Eastwood, Martin Evans, Michael Hayman, James Holloway, Geoff Hope, Ken Ireson, Keri Jones, Gordon Kirkby, Ian McAlpine, Stuart Moore, Colin Pottle, Mike Rumens, Norman Smith, David Spencer, Norman Smith, Ray Smith, Derek Sneddon, John Squire, Roger Thomas, Carl Watson, Mike Wauby & Trevor Roots**. We are sorry if anyone has been missed. All photos by **Trevor Roots** unless shown otherwise.

Website:

The new re-designed website was launched on the 17th May 2014. **Login details are no longer required** to access previous issues of **TRACKS** (Dec 2006 to date) and new pages have been added listing articles appearing in these issues. However the last 12 months issues (on a rolling basis) are available and can be emailed as pdfs to members on request from the editor (see **Magazine** above). Email Trevor Roots at website@intercityrailwaysociety.org if you have any queries or suggestions.

Flickr Photo Gallery: www.flickr.com/photos/intercity-railway-society/.

We have a photo gallery on **Flickr** and all photos submitted for inclusion in **TRACKS** will, time permitting, be added to the gallery. Please send all photos to editor@intercityrailwaysociety.org

ICRS Yahoo News Group: We have our own Yahoo News Group, established in March 2004, open to members and non-members alike to post sightings and observations, share comments and debate the current railway scene. To join visit finance.groups.yahoo.com/group/intercityrailwaysociety/ or email Steve Revill at intercityrailwaysociety-subscribe@yahoogroups.com

FORTHCOMING EVENTS

MEMBERS ONLY VISITS

DRS Crewe Gresty Bridge, 10.00-11.00, 18th October 2014:

As the deadline for applications has passed those who get chosen in the lottery will be informed fairly soon...if that has not happened already.

OPEN DAYS

Derby Etches Park, 10.00-16.30, 13th September 2014:

Organised by East Midlands Trains, admission for adults will be £11 and concessions £7. Family tickets (two adults and three children) are priced £29. Gates will open at 10.00 and close at 16.30, with the last entry at 15.30. A safe walking route will be available from Derby Station (Pride Park entrance). All profits from the open day will be donated to the Railway Children's Charity.

We will be there with our sales stand so come and say hello.

Long Marston Military Railway Railfest, 6-10th May 2015:

A new railway museum, the Long Marston Military Railway (LMMR) is a new project which will be operated at the former MoD depot by volunteers. The aim is to keep alive military railway skills, such as re-railing of trains, as well as locomotive driving and tracklaying. The army's last railway unit, the Royal Logistic Corps 275 Railway Squadron, was disbanded in March 2014 as a result of government defence cuts with the 79 Railway Squadron disbanded in 2012.

A 'Military Railfest' is planned for 2015 and is expected to include about 20 ex-army locomotives. Barclay 0-4-0DM 70047 '*Mulberry*' was already at Long Marston and was joined by USATC S160 2-8-0 3278, Isle of Portland, on the 22nd April 2014. The project is using the shed vacated by the Stratford on Avon and Broadway Railway. More details I expect to follow.

PRESERVATION PHOTO SPOT

on loan until September T9 4-4-0 30120 Didcot Railway Centre, 5th July 2014 (James Holloway)



EASTLEIGH WORKS REPORT

by **Carl Watson**

for the period up to 30th August 2014

General: The new Running Shed is still awaiting its second roller shutter door and some fitting out but it's already in use by Colas Rail for maintenance of their class 70s (see 70801 & 70804 right on the 27th), 4 of the locos visiting in the last week of August. The new Paintshop is almost ready for commissioning which should now be done by mid September.

With the slowing down of rail vehicle disposals at the moment, Raxstar have been diversifying and their latest venture has seen ex-Royal Navy Sea King helicopters arrive for disposal. The first arrived on the 12th and by the 29th there were nine on site.



Locos: 66714 departed in early August following its repaint into revised GBRf livery - I was away on leave at the time so missed it being completed and Sod's Law being what it is, it has been the only GBRf loco to leave the Paintshop and go completely away from the area, all the others having been used for at least a few days on one of the regular workings out of Eastleigh or Westbury that returns to the Works for fuel each morning.

57301 and 57303 (see below taken on the 27th) were wrapped in the new DRS vinyls between the 5th and the 7th. 57303 was named 'Pride of Carlisle' later in the month with the plates off 47712 (see inset below).



70801 arrived on 13th for an exam in the new Running Shed.

66751 arrived in early August for bodyside repairs and a repaint. It was completed by 18th but remained on Works for several days afterwards (see **NEW STOCK**).

57312 lost its 'Peter Henderson' plates around the the 20th and was in the Paintshop by the 22nd. By the end of the month it was part painted in Northern Belle colours.

Recently named 66738 'HUDDERSFIELD TOWN' and 66740 'Sarah' have both visited for fuel during the month.

56301 (see right) and 56311 (see overleaf middle right) stabled over the weekend of the 9th - 11th with the RailVac 99.70.9515.001-4 (see opposite bottom) which required some attention.

31285 visited with a Test Train on the 18th; 31285, 9523, 999602, 9714. It returned on the 22nd.

57310 arrived back for repairs to its cooling system on the 25th.



73109 and 73207 brought in brand new 66752 on the 27th. The EDs were then used to take E6005 (73005) and 73006 plus the two Translators 64664 and 64707 to Tonbridge on the 28th (see photo below). From there the two 73/0s were due to move to Peterborough and then on to Brush at Loughborough.



70804 arrived for repairs on the 27th and was put straight inside the new Running Shed, alongside 70801.

70801 was completed on 27th and departed after 70806 had arrived that evening. 70806 departed the following day.

66738 arrived back on the 28th towing failed 66751 for repairs.

66418 was the Maritime trip loco on the 28th.

70810 arrived for attention in the Running Shed on 29th.

Units: Siemens have overhauled 450012 and 005 with 103 and 092 on site at the end of the month.

455827 was completed by Wabtec and departed on the 15th, being replaced on the 18th by 455824.

OTP:

Rail Grinder DR79200 visited for maintenance and repairs in early August. It stayed just over a week and departed on the 15th.

Wagons: In the first week of August ten IWA log carriers arrived from LNWR Eastleigh for conversion work; 83.84.3523.017-5, 019-1, 022-5, 023-3, 025-8, 035-7, 038-1, 039-9, 043-1 & 045-6. By the 27th work was well underway on 025-8 and 039-9 (see photo below taken on the 14th).



66848 was hired to Freightliner and used on the Maritime trip on the 11th.

66572 was on the Maritime trip on the 13th with 70019 on the 18th.

66076 was the East Yard trip loco on the 20th, collecting repaired IGA and STVA IPA wagons (see below left).



photos by Carl Watson

PRESERVATION GALAS

Spa Valley Railway (SPA) Diesel Gala, 1st-3rd August 2014:

This Gala was attended by two members Colin Pottle and Keri Jones, a first time article contributor, both on Sunday the 3rd which incidentally was my birthday. I have added to and expanded Keri's potted history of the line, ed.

Keri Jones:

The Spa Valley Railway Summer Diesel Gala took place over the weekend of 1st – 3rd August 2014. I attended on the Sunday which was a warm and sunny day and purchased a day rover ticket costing me £20.

The railway is fairly young, only starting life in 1996. It is based in Royal Tunbridge Wells, Kent and operates a 5 mile section of track between Tunbridge Wells West Station via High Rocks, Groombridge and terminating at Eridge alongside the Southern mainline station. Tunbridge West was originally built for the London Brighton and South Coast Railway in 1866 before being transferred to Southern Railways in 1923 and after nationalisation in 1948, finally closing in July 1985. The original station building is now a pub 'The Old West Station' and the goods yard used by a Sainsbury supermarket and Homebase. The current preserved station was built alongside the 1891 built 4 track engine shed which is now the railway's workshop. The Tunbridge Wells base is very cramped and there is no space to expand though stock sidings at Groombridge alleviate storage problems. A twin track section is the northern chord of a former triangular junction with the mainline. Apart from Eridge all the stations on the line have been relocated. High Rocks is 100 yards west of the original halt closed in 1952. As the original station was sold and the former island platform removed, Groombridge was relocated in 1997 by extending the original platform southwest of Station Road bridge. With the former trackbed encroached on by new houses (Newton Willows) the re-laid single track curves in away from the down platform on the old loop alignment to reach the new platform. A run round loop was installed between the station and the sidings to aid operation. As of April 2014 agreement has been reached with Withyham Parish Council who now occupy the original station building to recreate a ticket office and reopen the original entrance.



At Eridge, SPA 'joins' the mainline at the former Birchden Junction, the eastern chord of a triangular junction, before running parallel for ¼ mile into the station shared with Southern Railway, SPA using Platform 3 (bay) and 2, Southern Services between London Bridge and Uckfield and Uckfield to Oxted using Platform 1. This is ideal for those travelling by train and a rare case of a preserved railway with more platforms than the mainline station !! Services reached Birchden Jnct in 2005 and Eridge in March 2011 (see report on page 17 in the May 2011 issue).



73140, showing the side with incomplete revised NSE livery + 33063 & set A, Eridge (12.57) 3rd August 2014 (Keri Jones)

Traction for the weekend was provided by:

D3489 'Colonel Tomline' (black with Felixstowe Dock & Rly Co logo) + Queen Mary brake van 56296
 26038 'Tom Clift' visiting from the Bo'ness & Kinneil Railway (BKR) (BR blue)
 31206 on loan from Rushden Transport Museum (RSM) (Civil Engineers Dutch livery)
 33063 'RJ Mitchell' (Railfreight triple tone grey)
 33202 'Dennis G Robinson' on loan from Swanage Railway (SWR) (BR blue)
 37254 'Driver Robin Prince MBE' (Intercity swallow), 73140 (E6036) (NSE repaint in progress)
 BR 2-Car Oxted DEMU 1317 (DMBS 60142 & DTS 60916)

Coach Sets:

Set A: 4999 (TSO), 25843 (SOB), 4828 (SO), 9414 (BSO)
 Set B: 21214 (QMBV), 25845 (BCK), Cl.101 DMU 54408

The first service of the day was the 08.00 2G01 Tunbridge West to Eridge which was due to be hauled by 33063 with 31206 trailing using 1317, however due to 31206 failing on Saturday, 1317 ran under its own power. On arrival at Eridge, bacon rolls freshly cooked on the platform, were available to buy for the early Sunday morning risers who had arrived for the run. The failure of 31206 was a pity as Sunday was to be its last working day before returning to RSM and many, including myself, had hoped to see it working.

31206 Tunbridge Wells West shed
 3rd August 2014 (Colin Pottle)



Hourly services departed Tunbridge West using a combination of traction making for some interesting photos. The best location for photos is Eridge as Tunbridge Wells West has a short and narrow platform often thronged with passengers, making photography difficult. The staff made good use of the bay platform, arriving locos were stabled here and the waiting loco from the previous working hauled the return service. Double headed workings were separated in the bay making for good photos. For the bus enthusiast a vintage bus rally was held in the station car park, bus rides were also available.

The weekend also saw the first use of the new signal box at Groombridge with, Phase 1 of the Spa Valley signalling scheme now complete, trains are now controlled by signals for the first time. Signals now in use are: Down Outer Home, Down Inner Home (Platform Starter), Up Loop Starter and From Platform Shunt as well as the points opposite the signal box. Groombridge also provided a good photo opportunity, Up Services from Eridge could be seen waiting, south of the station, in the Loop for the Down Service to pass from Tunbridge West...*the footbridge southwest of the station is also a good vantage point but even though it is seems so close, requires a 10 min circuitous walk back along the platform into Newton Willows, over Station Road to a footpath between houses into Gromenfield then left onto the track to the bridge. This location also allows photography from the south side as does another footbridge another 10 mins further on near the stock sidings. Go back to Gromenfield then to left at its junction with Corseley Road and left down a footpath alongside the school, ed*



above 33202 + 26038 + set B t&t 37254,
Eridge with 171722 in platform 1 (12.03)
3rd August 2014 (Keri Jones)

left
26038 between duties in the bay,
Eridge (12.50)
3rd August 2014 (Keri Jones)

There was ample ale and cider available from local breweries both on board and at Eridge, Friday night saw a 'Curry Express' and Saturday was a 'Fish & Chip Special' all reasonable priced at £10 and £7.50 respectively to day rover ticket holders.

Colin Pottle:

I wasn't expecting to visit this gala, but the combination of working fairly close the night before and seeing a Class 26 at Tunbridge Wells swung it, so off I went on the Sunday. I parked at Eridge and purchased my day rover ticket. I missed the first working but caught the 10.15 to Tunbridge Wells, hauled by 26038 and 33202. I always try to travel the whole line at least once as you never know what's hiding in some siding!

right

33202 + 26038 + set B
t&t 37254, High Rocks
(12.27) 3rd August 2014
(Colin Pottle)

below

DEMU 1317 with 37254
in the loop beyond the
footbridge and new working
signal gantry, Groombridge
(16.30) 3rd August 2014
(Colin Pottle)



The rest of the day was spent jumping on and off different trains, at different stations, to get a good mix of photos. The grand finale was a train being pulled by 26038, 33202, 33063, 37254 and 73140. Super power indeed (see below)

The sun stayed out almost all day and the gala was well attended, another excellent day out.

right

26038 + 33202 +
33063 + 37254 +
73140
Groombridge
(17.27)
3rd August 2014
(Colin Pottle)



East Lancs Rly Cl.14's at 50 Gala, 25-27th July 2014 by Andrew Westwood:

Or as I christened it, 'Teddy Bears Picnic'. I visited on the Saturday during a spell of real summer weather. The crowds were really fantastic with many trains running with standing room only. The only setback was that D9523 had failed on the Friday but was parked in the old bay at Bury station which was also used for locos between duties. The locos in use were 14.901, D9513 (NCB38), D9520, D9521, D9526 (APCM), D9531, D9537, D9539 and D9555 all looking in tip-top form. In use on the day was a parcels train which included two passenger coaches in its consist. The concessionary day rover ticket was £20.50 very good value indeed for what was on offer.

On my first trip from Heywood to Rawtenstall both the freight train and the parcels train were stabled at Ramsbottom complete with locos. On my second trip to Rawtenstall we had to wait at the station for the parcels train to arrive in the bay, this is the first time I have seen two trains at the end of the line.

My third trip was on the parcels train to Ramsbottom and I returned to Bury on a triple-header. At Bury one loco detached and I went onto Heywood with the other two to collect my car.

An excellent day out, however there are one or two issues for intending visitors to be aware of. Heywood is now well sign-posted from the M62 but the free car park does not open until the first train arrives (approx. 20 mins before it departs again). When you proceed to the station make a note on the blackboard what time the car park shuts or otherwise you may be stranded without your car (it was quite early on my visit). Quite often on arrival the booking office is closed, in fact on my visit the facilities were closed all day, so you have to book your ticket on the day usually cash only. On your visit you will see very few units, locos etc. as they seem to have all moved for security reasons down to the works area. In fact on my visit I saw D7013 and a steam loco in the fork between the lines leaving Bury for Heywood. At the other end the Western was visible in the shed with an 08 outside getting painted and pilot D2956. In the secure siding was the WD Wickham.

Llangollen Rly 'On Western Lines' Gala, 29th-31st Aug. 2014 by Martin Evans:

The Llangollen Railway (LLR) held a 'steam' gala over the weekend 29th – 31st August entitled 'On Western Lines' re-creating trains to Barmouth.



I went along on the Friday. and witnessed the following locos in action were resident 2-8-0 3802, BR Std 2-6-4T 80072, Black 5 4-6-0 45337, D5310 along with guest Ivatt 2-6-0 46521 from the Great Central Railway.

photos by Martin Evans

TRAFFIC & TRACTION NEWS

by John Barton & Trevor Roots

July 29

60092 passed through Barnetby at 09.16 (photo below by Brian Cowell).



August 1

350373 + 350404 departed Wigan at 12.08 on the 1M94 to Manchester Airport

66416 passed through Crewe station between 86612 & 86632 freshly painted in FL Powerhaul livery.

67004 leading passed through Eastleigh on 5Z88 Chichester - Eastleigh Depot VSOE ecs This loco is normally based in Scotland on the Caledonian Sleepers (photo below by Norman Smith).



In the pouring rain, 57012 hauled new 68009 + 68010 + 68011, the latter two in Chiltern Railways livery, through Crewe at 12.53, though as can be seen the track used caught out most waiting ! (photos at end and in **LIVERIES** by James Holloway).

August 2

56113 + 56087 working 6V62 Tilbury Riverside (Colas) - Llanwern Exchange Sidings passed through Trowbridge at 16.26.

47501 was used for the Norwich to Great Yarmouth drags where it was seen passing RSPB Strumpshaw Fen with 90001 'Crown Point' for company on the 12.03 service via Reedham (photo below by Stuart Moore).



August 3

180105 working from Longsight - Heaton T&RSMD ecs passed Loughborough on the fast at 17.36

66221 working the Radlett - Toton North Yard engineers train with HQA autoballasters & 3 flat wagons passed Cossington on the slow at 15.10.

A4 60009 'Union of South Africa' t&t 57316 passed through Cheadle Hulme on 1Z94 Crewe - Holyhead at 10.09 (photo below by John Squire).



August 4

66174 passed Paddock Wood at 21.04 working 0Y12 Dollands Moor - Hoo Jct. Up Yard.

57007 + 57012 + 37688 on a Carlisle - Crewe Basford Hall ballast working were seen in Clifton loop, near Penrith waiting for 390122 to pass with a Glasgow - Euston train. The consist was

the entire batch of ten YDA Skako Ballast Distribution Wagons numbers DR 92213-92222 and a single VXA generator vehicle No. 210306 (photo at end by Gordon Kirkby).

70810 departed from Crewe for Saltney Junction, Chester at 11.45 with an engineer's train, this working is connected with the re-doubling of the Rossett to Saltney Junction section of the Wrexham to Chester line which was closed from 2nd-10th August 2014 to allow these works to proceed.

66742 was seen awaiting the road at Crewe with a route learning / crew training special at 13.15 (photo below by Martin Evans).



86627 + 90049 move back to Basford Hall at 13.10 having run into platform 10 at Crewe (photo below by Martin Evans).



68002 was seen running through Dorridge at 12.43, the first Cl.68 associated with Chiltern Railways (photo below by James Holloway).



66096 working 6M77 14.45 Cwmbargoed DP - Hope (Earles Sidings) via Margam headed southbound through Llanbradach with 18 loaded buffered HTAs at 19.18.

August 5

57308 + 390040 departed Preston at 23.04.

66015 + 59203 worked 6X65 2028 Didcot - Mossend through Leamington at 21.39.

68004 was seen sitting in the 'Royal dock' siding beside platform 1 at Norwich station. It had arrived light the day before but had set off from Crewe on the 1st failing en route at Ipswich where it stayed over the weekend until repaired (photo below by Stuart Moore).



August 6

37218 t&t 37601 passed through Nuneaton at 23.10 on Sizewell - Crewe flasks.

66120 working 6E41 Penyffordd Cement Sidings - Doncaster Belmont Yard passed Willenhall at 21.57.

August 7

57604 working 1A40 21.45 Penzance - London Paddington passed through Truro at 22.33.

DR 73502 was seen on a low loader going north on the A1 just north of Newark at 20.30.

70803 on the Felixstowe - Lawley Street liner passed Northampton at 18.16.

60091 replaced 60045 as Eastleigh Yard super shunter.

66523 on 6O49 Colnbrook - Wool empty sand passed through Eastleigh at 14.51 (photo below by Norman Smith).



August 8

66154 passed Slough at 20.04 working 6V51 18.34 Churchyard Sidings - Whatley Quarry.
66020 + 66003 passed Slough at 20.02 working the 16.16 7A15 Merehead Quarry - Acton Yard.
66425 + 66431 working 4S44 from Daventry - Coatbridge passed Braidwood at 19.36.
66416 in its new Powerhaul livery passed 08904 shunting TTA tanks in Eastleigh East Yard heading southbound on 4O54 Leeds - Southampton freightliner at 13.35 (see photo below by Norman Smith).



August 9

68005 working 4D47 Inverness - Mossend Stobart stormed past Forgandenny at 16.33.
66711 headed north through Blackhall Colliery at 16.19 on Ferrybridge PS - Tyne Dock coal empties.
Engineering work at Cheadle Hulme saw diversions including 70013 on a Trafford Park - Crewe freight seen passing Heald Green at 12.46 (photo below by John Squire).



Engineering work north of Ipswich meant that there was no need for the 'drags' between Norwich and Great Yarmouth. Instead the short set was used to strengthen the local services between Norwich and the Coast. Running in the path of the drags the service was non-stop to the coast and used 47853 and 47501. The final

run was an extra. Rather than running as an ECS to Norwich Crown Point the stock was used to run an extra to Norwich. In the photo below, it is seen passing Brundall at 17.00 with 47853 leading (note the gold buffers). This was the first working of the short set for a couple of weeks after the stock was failed at Reedham with seized brakes on one of the coaches. A replacement coach was sent to NC by DRS but the stock was not used for a while. It has since been used more regularly again (photo below by Stuart Moore).



August 10

66132 headed north through Bedford at 22.52 with a Bedford South - Toton North Yard working, with cranes DRP 78215 & DRP 78219 in the consist.
66303 on 4M36 Wentloog - Daventry passed through Gatcombe at 20.06.
60044 headed through Bedford at 18.48 with a Bedford South Jct. - Toton north yard working.
66602 on Tunstead - Westbury passed Tilstock at 16.49 (photo below by Roger Thomas).



August 11

70803 working the Trafford Park - Felixstowe passed Cheddington at 20.44
86259 passed Preston at 20.22 on a Carnforth-Willesden light engine move

66506 passed Stoke Lane at 16.48 on an Immingham - Ratcliffe Heavy Haul working.
321423 was seen waiting at Colchester Town having just arrived from Colchester at 15.30 (photo below by Martin Evans).



90005 was seen slowing for its booked stop at Colchester at 14.45 (photo below by Martin Evans).



August 12

66701 working the Toton - Whitemoor Departmental passed Cossington at 18.48 with nine MHA, MTA type wagons & a single OCA on the rear.

EMT 43059 t&t 43076 headed south through Biggleswade at 17.50.

The tail end of Hurricane Bertha caused havoc in the north of Scotland resulting in line closures due to flooding of the Highland mainline around Kingussie and at various points on the Inverness to Aberdeen line between Elgin and Huntly. A shuttle service operated from Huntly to Aberdeen as seen opposite top with 170426 at Huntly arriving at 16.23, which was seen on the

previous service 3 hours earlier, so not sure if it ran them all.



August 13

67010 departed Birmingham Snow Hill 20.44 on Marylebone - Kidderminster working.

92015 passed Paddock wood at 20.42 working 6D63 Wembley - Dollands Moor.

37518 was seen at Carlisle on 1Z52 from Lancaster at 13.09 (see **LIVERIES**)

68004 was used for driver training between Norwich and Colchester.

August 14

66303 passed Atherstone on the fast line with 4S44 Daventry - Coatbridge at 12.45.

70803 + 66529 passed 66850 + 66508 + 66413 in Eastleigh East Yard at 15.14 in the pouring rain on 4O27 Garston - Southampton freightliner (photo below by Norman Smith).



The 14th was a good day in Norwich. GBRF ran a 'ladies day' train from Ipswich to Norwich via Bury and return via the GEML. At Norwich 66740 was named 'Sarah' after one of the women who works for the company to celebrate her 40th birthday (what a gift!). The special was t&t by 66740 and 66728. Also in the station at the time were 47813 and 47853 (47813 had replaced 47501 earlier in the week) on the short set and 68004 in the yard. The DRS locos would later form the 14.55 to Lowestoft (photos overleaf top by Stuart Moore).



67026 and 90029 were seen stabled at Edinburgh Waverley at 11.56 (photos below by Roger Thomas).



August 15

56303 + 56312 passed Treeton at 14.15 on 6Z56 Washwood Heath - York.

66555 passed Eastleigh on 4M61 Southampton - Trafford Park freightliner at 13.20 (photo below by Norman Smith).



60091 having arrived with 6X44 Southampton Western Docks - Eastleigh Yard wagonload was seen shunting it into position for its onward move to Didcot (photo below by Norman Smith).



August 16

47786 t&t 47854 approached Bottesford at 05.50 with Grantham - Cardiff Central.
66061 working the 00.37 6C96 Cwmbargoed DP - Aberthaw PS headed southbound through Llanbradach with 21 loaded HTAs at 02.05.
66598 passed Eastleigh at 11.45 on 4O14 Hams Hall - Southampton freightliner (photo below by Norman Smith).



August 17

34067 *'Tangmere'* returned to the mainline on the Weymouth Seaside Express but all did not go smoothly. Delays were caused by a speed restriction north of Maiden Newton, whilst ongoing track maintenance is carried out and light rain in the area leading to adhesion problems on Eversholt Bank resulting in the locomotive stalling. In the photo below by Andrew Buckley 34067 approaches Dorchester West at 13.45. Eventually the train made Weymouth 153 minutes late. Contingency plans were enacted though and this led to 33029 being despatched from Bristol (this having propelled the ECS consist the day before from Southall) as the paths for the turning move for Tangmere to Yeovil had been missed. This meant that the return 1Z83 working was hauled by 33029 throughout as seen by Andrew passing Dorchester West at 17.12.



34046 *'Braunton'* passed Bridgwater at 19.14 with 1Z28 Kingswear - Bristol Temple Meads.

66620 passed Paddock wood at 17.04 working 6Y80 Buckland Jct. - Hoo Jct.

August 18

70802 headed south through Hornsey at 23.21 with a long rake of engineers wagons.
66754 passed Long Eaton Town Crossing at 22.52 with a Crewe - Toton working.
66416 on 4O54 Leeds - Southampton passed Beighton Junction near Rotherham at 06.17 (see **LIVERIES**.)
56312 t&t 56303 and a RailVac machine was seen at Slitting Mill on 6Z34 York Leeman Road Sidings - Washford Heath (photo below by Colin Pottle).



August 19

56087 was seen at Cardiff Central at 11.07 (photo below by Colin Pottle).



66413 t&t 66518 passed through Swindon with a ballast train at 06.40 (photo below by Colin Pottle). Note the recent addition of Freightliner decal to cab front.



66181 + 66164 + 66063 were seen passing Slitting Mill at 09.55 on Toton – Doncaster Belmont Down Yard (photo below by Colin Pottle).



66089 was seen crossing the River Usk near Newport at 12.00 (photo below by Colin Pottle).



August 20

66754 passed Turves near March at 20.12 with a Toton - Whitmoor working.
97301 with a test train was seen stabled in Doncaster West Yard at 19.46.

August 21

68010 + 68011 heading southbound light engine on a Carlisle – Crewe working arrived at Preston station at 12.50.
66745 t&t 66732 passed Ely at 16.49 with Selby - Felixstowe working.

56103 was seen passing Eastleigh East Yard at 16.08 on 0Z03 Derby Gas Tank Sidings - Totton Yard light engine move. In the yard were 66232 on 4021 Trafford Park - Southampton Intermodal and 47727 (photo below by Norman Smith).



August 22

47727 + 456004 + 456018 (In southern livery) passed Clapham Jct. at 21.13 on a Wolverton – Wimbledon working.
66738 passed through Eastleigh on 0V40 Eastleigh Works - Westbury Yard light engine move at 09.00 (photo below by Norman Smith).



August 23

57307 t&t 47790 passed Queensville in Stafford with a Oxenholme - Birmingham International Northern Belle at 19.58.
66004 t&t 66198 on a Toton North Yard - Flitwick Jct. engineers train passed East Goscote at 18.08.

August 24

60039 t&t 60040 with stock 4949, 4998, 4946, 1813, 3122, 3112, 3147, 1671, 3100, 3098 & 21272 passed Cardiff at 16.51.

37423 + 999550 + 1256 + 9701 were seen stabled on CS1 off platform 6 at Derby.

47237 arrived at Dorchester West at 11.15 hauling 1282 Bristol Temple Meads - Weymouth, "The Dorset Coast Express". 34046 'Braunton' had been in charge of the departure initially but was taken off at Yeovil Pen Mill and was turned at Yeovil Junction before heading to Weymouth light engine (photo below by Andrew Buckley).



34046 'Braunton' was seen working through Dorchester West on 1283 Weymouth - Bristol Temple Meads at 16.45 (photo below by Andrew Buckley).



56301 t&t 56103 was seen at Eastleigh on the rear of 6Y57 Feltham - Totton Yard RailVac Train at 08.20 (see 56103 in **LIVERIES**).

August 25

66012 passed Long Eaton Town Crossing at 19.40 with a Luton - Peak Forest working.

37611 t&t 37605 were heading towards Bletchley at 21.18.

August 26

66421 with 4S44 Daventry - Coatbridge headed north from Carlisle at 18.28.

37194 + 37402 passed Preston heading south at 19.36.

August 27

66162 on Broxbourne - Mountsorrel empty hoppers passed Cossington at 16.06.

34067 'Tangmere' t&t 37706 was seen at Eastleigh on 1Z67 London Victoria - Weymouth "The Dorset Coast Express" at 11.30 (photo below by Norman Smith).



68006 worked through Aviemore on 4D47 Inverness - Mossend Tesco at 14.10, 15 mins early as 37685 was running round its train to the right...nearly perfect timing.



66752 was seen at Eastleigh on a Tonbridge West Yard - Eastleigh Works move at 16.15 (photo below by Norman Smith).



August 28

56113 passed Norton Fitzwarren at 19.03 on 6M51 loaded logs from Teigngrace - Briton Ferry Yard

66606 passed Eastleigh on Neasden - Wool empty sand hoppers at 14.55 (photo below by Norman Smith).



66418 was seen arriving at Eastleigh on 4Z90 Southampton MCT - Eastleigh Works with wagons for refurbishment at 14.50 (photo below by Norman Smith).



37425 t&t 73138 departed London Victoria station at 16.23 working 1Q85, Hither Green - Hither Green via Ashford.



August 29

57007 passed through Penrith northbound at 20.38 with the 0Z58 Liverpool Gladstone Docks - Carlisle Kingmoor DRS hauling newly arrived 68012, 68013 & 68014.

57316 (the last in ATW livery) + 57313 headed south through Penrith at 16.29 with the 5Z00 Kilmarnock - Old Oak Common ECS working hauling newly converted TSOs (ex-TFs). The stock was: 6330, 42572 (41123), 42569 (41105), 42578 (41143), 42571 (41121), 42574 (41129), 42568 (41101), 42575 (41131), 42577 (41141) & 6338 (photo below by Gordon Kirkby).



57012 + 68009 + 68010 + 68011, Crewe
1st August 2014 (James Holloway)



57007 + 57012 + 37688 Clifton Loop
near Penrith, 4th August 2014 (Gordon Kirkby)

FRANCHISE NEWS

Hong Kong based metro operator MTR has been awarded the Crossrail contract which will run for 8 years starting on 31st May 2015 with an option to extend a further 2 years based on performance.

Grand Central owned by Arriva Trains has been granted rights to continue running its Sunderland – King's Cross services until 2023.

With the Scottish government keen to go it alone and the possibility that the new Caledonian Sleeper franchise will utilise different traction, it appears a radical solution has been put on display, though the valuable concept vehicle clearly requires high security, possibly due to its whisky barrel design. An independent Scotland would need to utilise its natural resources, so timber construction appears to be the way forward and possibly wind driven....there certainly has been plenty of that recently !!! Roll on the 19th September and normality...*no one south of the border has any idea what we have put up with for 4 years, that's the first and last I'm saying on the debate, ed.*



the possible replacement vehicle alongside
67022 after the sleeper coaches have been
shunted to the depot, Inverness 29th July 2014

INFRASTRUCTURE NEWS

Misc: The Government is to evaluate a high speed trans-Pennine route designated HS3 which will link the major northern cities.

A rare visit of 379007 to Norwich occurred on the 30th July 2014 when it was used for overhead line assessment between London Liverpool St and Norwich. The photos below and right by Stuart Moore show the unit forming the 13.43 return from Norwich to Liverpool Street and a close up of the light and camera on the roof of the third car back used to check the OHL equipment.



Stockport Area Engineering Work by John Squire:

Whilst engineering work being undertaken during August in the Stockport area, was mostly overnight Cheadle Hulme station on Sunday 17th August. Locos used were 66187, 66213 and an unidentified cl.60. A cl.66 can be seen in the distance in the photo below. SB Rail ZWA 08-16/4x4C100RT Tamper / Liner with integrated trailer DR 73934 was also used, as seen left.



Nairn to Keith Engineering Work by Trevor Roots:

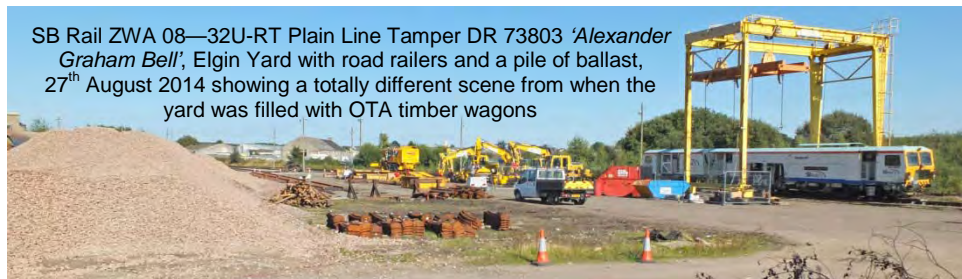
Not known for huge numbers of locos the Aberdeen – Inverness line has seen a welcomed increase in activity in recent weeks, as during the end of August and into September track repairs have been undertaken on various sections between Nairn and Keith. This entailed stockpiles of ballast and road railers being brought in and deposited at Elgin and Keith Yards and several CI.66 top & tailed trains operated by DBS and DRS. Three tampers were also in use, with DR 73803 based at Elgin and DR 73932 arriving at Keith on the 30th August. Both of these are the only ones of their type. It's not known what the Inverness based one was. On Sunday 31st August I was able to witness two trains moved into the possession just west of Keith. They originated from Raith's Farm Dyce, the 10.13 6K23 with 66130 hauling 10 autoballasters HQA 380303 / 123 / 121 / 120 / 008 / 024 / 173 / 175 / 174 / 325 which arrived at Keith at 11.50 and the 11.02 6K24 with 66103 t&t 66054 and the 10 wagon Shako train plus VXA 210306. Also in the yard at Keith on the Sunday was 66003 t&t 66193 with 7 autoballasters HQA 380317 / 149 / 122 / 110 / 018 + JJA 12975 / 948. This train



had come over from Elgin where it was seen on Wednesday 27th August (see photo left). Other loco combinations known to have been in the Nairn area on the Sunday were 37425 t&t 37423 and 37218 t&t 37604. Had I not been trying to finish **TRACKS** then I would have travelled over to see these....the sacrifices I make for ICRS !

above 66003 with autoballasters (with 66193 at the other end) to the left of the ballast pile in photo below, Elgin Yard 27th August 2014

SB Rail ZWA 08—32U-RT Plain Line Tamper DR 73803 'Alexander Graham Bell', Elgin Yard with road railers and a pile of ballast, 27th August 2014 showing a totally different scene from when the yard was filled with OTA timber wagons



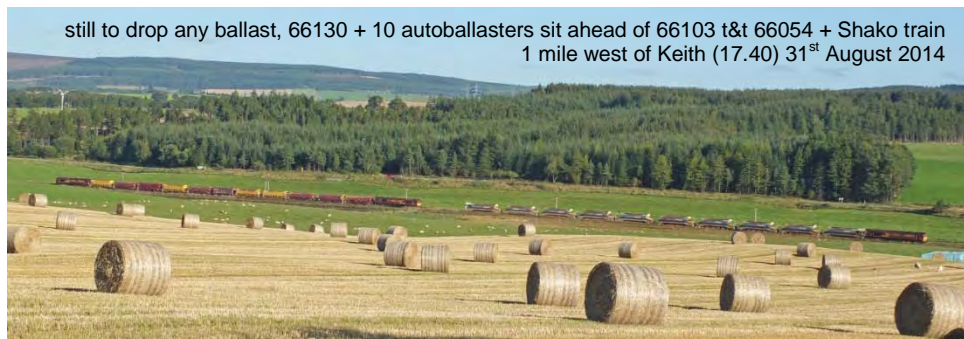


66103 t&t 66054 with Shako
YDA autoballasters and generator van
92215/20/17/16/13 + VXA 210306 + 92222/18/19/14/21
sit in the loop to allow 170403 to pass, Keith 31st August



having arrived from Elgin, SB Rail
ZWA 08-4x4/4S-RT Switch & Crossing Tamper / Liner
DR 73932 momentarily sits in the loop before
'reversing' back to the yard, Keith 30th August 2014

still to drop any ballast, 66130 + 10 autoballasters sit ahead of 66103 t&t 66054 + Shako train
1 mile west of Keith (17.40) 31st August 2014



OUT & ABOUT

by James Holloway

*For clarity, steam locos are now shown in red. To be more helpful for those interested in where stock was exactly, can I ask all contributors who list trip sightings over long distances, to please add all locations when submitting to James. Please also ensure your sightings reach James a few days before the press deadline, see **SOCIETY NOTICE BOARD**...ed*

Bob Eastwood:

7th August:

Bescot 13.03-15.32:

08580/709/907, 60044, 66005/060/078/428/522
66527/746, 70803/808/809

8th August:

Tamworth 10.27-15.28:

37606/611, 60044, 66019/040/110/112/183/187
66423/425/428/431/529/599, 67003, 70014/016
92041/42

Mike Waudby:

16th August:

Beverley 06.00-06.30:

158784/851

Hull Paragon Station 06.45-06.50/19.50-20.15:

43206/277, 144009/12, 158786/797/817/842/855
158859, 180110

Gilberdyke Junction 07.15: 66714

Doncaster:

20308/309, 37409, 43046/083/239/257/272/299
43300/302/306/307/309/310/311/315/318-320/465
43467/480/484, 66018/080/095/221/250/527/588
66701/705/714/717/745/748/750, 67003/08/20/29
91102/04/07-09/11-14/16/17/19/22/25-32, 142016
142026/40/45/60/88/94, 144006/07/09, 153308/84
158784/794/796/797/817/842/855/910, 170302/03
170305/09, 180101/05/09-12, 185125/32/42/49/51
220001/14/15/17/25/32/33, 221120/35, 321903
322481/484

Doncaster Roberts Road 12.55:

D4157, 66755

Sheffield 13.15-14.40:

142016/19/26/37/49/60/90, 144003/09/11/14/21
156497, 158806/816/843/845/901/903/908
185125, 220030, 221120/23/34, 222004/005/010
222016/023

Dave Spencer:

21st August:

Banbury 12.46-16.42:

43014, 56103, 66128/130/142/213/232/738/955
67010/18/27, 165018/026/037, 166201, 168004
168005/106/108/110/113/215/216/218/219
172102/104, 220002/06/08/09/11/16/25-27, 221125
221127/32/34/35/37, DVTs 82301/304/309

Mike Rumens:

25th July:

Birmingham International: 350120/130

Birmingham New Street:

170518, 323211, 350239/244/247/248, 390119

Birmingham Moor Street:

165014, 168215, 172333/341/344

28th July:

Nuneaton 13.52-14.45:

47805, 70810, 90044/49, 92016, 153371, 170107
170518/520/639, 221112/118, 350113/122
390040/047/049/107/115/128/129/148

29th July:

Birmingham New Street:

153369, 158824, 170632, 350104/130/253

30th July:

Nuneaton 13.52-14.40:

66149/525/536, 70808/810, 90045, 92039, 153334
170107/108/111, 221108, 350102/117, 390009
390117/119/137/154, DR73118/77905

31st July:

Nuneaton 13.58-14.40:

66067, 70806, 90046, 92016, 153354, 350112/121
390013/104, DR73118/77905

4th August:

Nuneaton 14.41-14.27/16.10-17.40:

66086/534/592/719/728/741, 70804/805, 90041/49
153371, 170109/110/116/397, 350101/108/116
390001/006/008/042/050/113/123/127/146/153

5th August:

Birmingham New Street:

158820, 220019/20/27, 323214, 350234/241/253
390135

6th August:

Nuneaton 13.55-14.45:

66161, 90045, 92041, 153375, 170116/398/636
221103/15, 350110/125, 390005/009/016/046/119
390141/151

7th August:

Nuneaton 13.50-14.40:

66016/151/545, 67030, 70009, 92041, 153356
170109, 221104, 350104, 390006/008/050/136
DVTs 82111/129

12th August:

Birmingham New Street:

158835, 170509, 221114/18, 323219

13th August:

Nuneaton 14.05-14.40:

70808, 170108/398, 221107/43, 390046/114/124
390136/152

14th August:

Nuneaton 14.05-14.40:

66207, 92031, 153365, 221108, 350116, 390011
390039/112/132

18th August:

Nuneaton 14.07-14.40:

66076, 70810, 92031, 153375, 170639, 390132

19th August:

Nuneaton 13.40-14.40:

59205, 66044/142/414/501/569, 70810, 90035
92031, 153365, 170106/114, 221142, 350110/113
390011/039/130/141

20th August:

Nuneaton 14.00-14.55:

66044/187/591, 67003/20, 70016/810, 92031
153375, 170398, 390006/104/154

21st August:

Rugby: 350244, DR73113

Wembley: 66741, 67008/14

Euston: 90039, 350120/124

Waterloo 07.49-08.35:

158881/885, 159002/021/102, 444001/08/18/28/35
450001/009/020/021/024/034/035/037/040/071
450076/082/088/090/092/096/104/108/111/115
450121/125/552/554/557/559/566, 455701/708
455709/713/715/718/719/727/730/850/854/857
455861/872/912, 458023/024/027

Woking: 450001, DR80301/98220

Winchester: 66534

Southampton Central 09.50-10.44:

66200, 158833/890/915/950-953, 221121
377424, 444014/21/29/42, 450012/021/035/079
450106/114/125

Southampton Western Docks:

08691, 66505/595, 70013

Southampton Maritime: 08530

Redbridge:

66082/163/230, 158880/954, 444009/25

Eastleigh 11.48-16.14:

08904, 47727, 56103, 60091, 66057/076/128/133
66169/200/232/519/548/571/751/848/850/955
70009/013/015/019/803, 73109/207, 158883
220008/11/20/21/25, 221134, 444002/03/05/08/09
444016/22/23/25/26/35/43/44, 450002/004/007
450008/014/020/021/028/038/046/050/122/124
450546/554/555/564/570

Clapham Junction 17.37-18.05:

159001/016/017/019/102, 377109/137/140/205
377325/408/418/428/431/435/436/440/446/449
377454/464/466/472/473/605/606/608/612/613
377620/621/625/626, 378137/208/211/224/233
440002/10/13/15/28/34, 442407/10/11/19
450002/006/009/013-016/018/021/025/026/039
450042/072/075/083/092/095/099/102/109/114
450122/123/127/546/547/550/555/567/569
455702/710/712/714-716/718/719/722/726/727
455731/739/815/830/840/849/858/859/867/869
455871/873/901/903-906/909/912/914-916
458011/15/21/25/27/29/531/535

Brian Derricote:

20th August:

Preston 07.15-09.00:

66111/167, 92036, 142013/39/41/44, 156428/464
158753/817/902, 185118/46, 221111/16, 350372
350374/401/404, 390049/115/153

Crewe 16.00-16.15:

56103, 66725, 70002, 90011, 150254, 153381
175002

Stafford 16.45-18.15:

56103, 57008, 66001/420/572/594/598/606/707
66741/742/754, 67003/20/30, 70010, 220021
221102/05/10/15/17/22/27/34/41/42, 325005-07
350115-117/124/254/261/262/264, 390006/008
390046/047/108/117/123/126/137/151

DVTs 82117/145 **Paul Bright:**

10th August:

Coventry-Northampton & return:

57302, 66302/422, 92032, 153365,
350105/107/114
350122/127/248/260, 221135, 390001/104

Michael Hayman:

2nd August:

King's Cross:

Met No.1 'Sarah Siddons', 43467/480, 47237/790
47828, 57307

5th August:

Acton: 59004/201, 66019/037/117/136

Ealing Broadway: 60163 'Tornado', 31601

11th August:

King's Cross: 37706, 43314/320, 86259, 91124

22nd August:

Harrow & Wealdstone:

31601, 66533/591, 86613/614

Wembley: 67014/17, 70009, 90039

25th August:

Paddington: 60163 'Tornado', 57604/605, 66115

Ian McAlpine:

26th June:

Peterborough: 66732, 91112, DR73913

Newark Northgate: DR75403

Doncaster: 60091, 66425

York: 37706, 66598, 90028, DR73117/77904

29th June:

York:

D5613, 66425/953, 150271, 158860, 185119/47

Doncaster: 20303/305/08

Peterborough:

66067/705/712/732/741/751, 91128, DR79261

4th July:

Peterborough: 91104, DVT 82225

King's Cross: 67029

Victoria:

377113/119/123/130/143/156/407/431/613

442406/11/18, 465047/176/184/915

Clapham Junction: 377164/614/625, 444034

East Croydon: 377451, DR73918

Gatwick Airport: 377448/461, 442401/07

Haywards Heath: 377417/449/522

Lewes: 313201

Polegate: 377456

Eastbourne: 171728, 377405/416

5th July:

Hastings: 375909, 377110/123

St Leonards: 171722, 375909, 377461

Hampden Park: 377445

Eastbourne: 377416

Lewes: 313219

Haywards Heath: 377410

Gatwick Airport: 66128, 377464, 442411/13
Earlswood: 377113/130
Victoria: 377164/427/428/601/620
East Croydon: 319423/444, 377131
Horley: 377426/450
Preston Park: 377469/521
Brighton:
 171723, 313201/202/207/210-213/219/220
 319003/367/459/460, 377101/155/305/420/457
 377459/607/621
Hove: 377449, 442402/06/08,
Portslade: 377119/127
Southwick: 377108
Lancing: 313212
Worthing: 377125
West Worthing: 313211
Fareham: 313209, 377448
Havant: 450127/570
Cosham: 377160/162/408
Bitterne: 158960
Southampton Central:
 66502, 70016, 158882/889, 377125/204/402
 444001/07/16/18/27/30/39
Bexhill: 171724
6th July:
Hastings: 375912/917, 377423
St Leonards: 375919
Eastbourne: 171722, 377134/413/473, 442419
Polegate: 377454
Lewes: 313202
Wivelsfield: 377447
Gatwick Airport: 442405/13
Selhurst: 377604
Clapham Junction: 377614
Victoria: 442416, 465173
King's Cross: 365521/30
Peterborough: 170205
11th July:
Peterborough:
 43467/468, 66078/144/738/741, 170101/271
Leicester: 222008
Hams Hall: 08873
Coleshill Parkway: 47739
Washwood Heath: 08588
Lawley Street: 66501/572, 70015
Birmingham New Street:
 170516/633, 323205, 390040
University: 323216
King's Norton: DR773931
Longbridge: 323201
Droitwich Spa: 172211
Great Malvern: 170630
Ledbury: 43174/176
Hereford: 175001/109
15th July:
Hereford: 170633
Ledbury: 170511/630
Great Malvern:
 166207, 170505/508/630, 172221
University: 323240
Birmingham New Street:
 350103/127, 390125/153

Lea Hall: 323203
Title Hill: 350111
Coventry:
 221107/25, 350103/241, 390123/137/152/153
 DR73116/77906
Leamington Spa: 168003/107/111
Solihull: 168001
Birmingham Moor Street:
 67027, 168215, 172343, DVT 82302
Birmingham Snow Hill: 172212/344, Tram 11
Rowley Regis: 172345
Stourbridge Junction: 67018, DVT 82309
Worcester Shrub Hill: 166209, 172211/216/219
13th July:
Hereford: 150208/257/262, 153320, 172343
Worcester Shrub Hill: 172213
Stourbridge Junction: 168214
Birmingham New Street: 170116
Washwood Heath: 08588/762, DR73110
Peterborough: 66704/743/746/748
18th July:
Peterborough:
 66081/187/712/726, 91128, 180101
Doncaster: 67008, DR77802
York: 66511, 185118
21st July:
Darlington:
 66535, 142018/65, 185129, 221130
York:
 GWR 5972, 20303/305, 31190, 37218, 66425
 185140
Doncaster:
 43277/310, 66520/707/748, 180107, 322484
 DR77802
Peterborough: 66414/724/728
23rd July:
Peterborough: 43296, 66705/724/725/729
Doncaster:
 08724, 20308/309, 66170/181, 67008/09, 170305
 185138, DR75303/77802
Leeds:
 43277, 155346, 158754, 185104/14, 322485
 333011
Huddersfield: 150114, 185143
Manchester Victoria:
 142021, 150269, 156421, 158902
Huyton: 156464
Roby: 150119
Wavertree Technology Park: 156455
Edge Hill: 66739, DR72211/72213/79201/98215
Liverpool Lime Street:
 150222, 156427, 185148, 508126
Hamilton Square: 507030
Green Lane: 508136
Rock Ferry: 508143
Bebington: 508137
Bromborough: 507027
Hooton: 507011
25th July:
Capenhurst: 507032, 508126
Chester:
 175104, 221108, 507016/19, DR73921

Shrewsbury: 66563, 150258/284, 158821
27th July:
Hooton: 507031/032, 508108/126
Rock Ferry: 508111
Birkenhead Central: 508134
Liverpool Lime Street: 158806/862, 390136
Edge Hill: DR98215
Nottingham: 158810/854
1st August:
Peterborough:
 43206/251, 67025/30, 91120/26, 365514/27
 DVTs 82217/18, DR77801
St Pancras:
 37 3215/216/219/229/230, 395016/22/23/27
Ebbsfleet: 395008
Ashford International:
 171727, 375623, 395004/25, DR73503/919
 DR77316
Ramsgate:
 375604/611/614/616/620/707/821/925
Faversham:
 375303/604/614/711/801/806/829, 395007
Whitstable: 375309/629/630/821
Margate: 375821/830, 395003
2nd August:
Ramsgate:
 375613/623/707/707/711/812/823/825/906/915
 376034, 395005/16
Ashford International:
 171728/804, 375307/602/624/706/713/804/813
 375824, 395008/10/28, DR73939/77315/77316
 DR80301/80303, DRP78218/78223/81513/81525
Tonbridge:
 375621/624/626/706/807/823/911, 377164
 DR98919/25/71/80
Folkestone Central: 375620/904
Faversham: 375710/805/830, 395006
Margate: 375614/919, 395011
Sittingbourne: 375618/619
Gillingham: 375301, 465166/191, 466038/42
Rochester: 375604, 395006/14, 465166, 466032
3rd August:
Ramsgate:
 375306/307/627/712/802/804/808/809/902/921
 375927, 395001/05
Ashford International:
 375608/612/815, 465934, DR73503
St Pancras: 37 3021/022/103, 395012
King's Cross: 67029, 365503/21
8th August:
Peterborough:
 37405, 43465/484, 66207/732, 170115/201
 DR73913
Leicester: 37906
Hams Hall: 08873, DR73936
Washwood Heath: 66058, DR73929/930
King's Norton: DR98958
Colwall: 153371, 170502/511/632
Hereford: 66037, 158825, 170511
9th August:
Ledbury: 170508/513/631
Malvern Link: 166206/210, 170631

Great Malvern: 150108, 170508/513
Worcester:
 43035/183, 150246, 159004, 166214/216, 170508
 170511-513, 172214/345, DR75407
Droitwich Spa: 170501/503, 172221
Kidderminster: 20177, D5410, 55019, 172219/341
Birmingham Snow Hill: 172101/214/332/345
Birmingham Moor Street:
 165001/002/027/032, 172219/331/333/341342
 DVT 82301
Leamington Spa: 67010, 165005
10th August:
Kidderminster: 50026/49
Stourbridge Junction: 67017, DVT 82304
Lawley Street: 66955
Peterborough: 66714/716/718/728
15th August:
Peterborough:
 43310/311, 66080/712, 91110, DR73913
Doncaster:
 57314/315, 60019, DR73946/75403
York: 46115 '*Scots Guardsman*'
16th August:
Darlington: 91109
Tyne Yard: 66199
Newcastle: 67015, 91122, 156513, DVT 82203/18
Tyne & Wear Metro:
 4002/03/07/08/12/14/16/17/25/27/34/44/48/52/58
 4059/61/70/73/77/78/80/81/84/87/89
17th August:
Darlington: 66177, 142071, 156463, DVT 82200
York:
 5972 '*Hogwarts Castle*', 46115 '*Scots Guardsman*'
 20304/312, 66427, 150210/220
Doncaster: 20308/309, 66020/070
Peterborough: 66747, 91126

James Holloway:

1st August:
Crews 11.00-12.19:
 09204, 37425, 57012, 66416/430/742, 68009-11
 DR73118/77905/98012/98013

Ken Ireson:

5th August:
Barnetby 17.30-20.30:
 60024/39/44/99, 66008/125/132/164/561/597
 153355, 170303/04/08/09, 185122/28

Geoff Hope:

1st August:
Doncaster 08.25-15.30:
 08669/724, 20308/309, 43206/208/238/239/251
 43274/277/295/296/299/300/302/305/309-311/313
 43314/316/320/467/468/480/484, 47812/815
 57307/311, 66040/059/076/078/080/164/169/503
 66597/707/708/716/744/751, 67005/08, 70005
 91103-05/07-14/16/17/19-21/24-32, 142019/32/50
 142053/68, 144001-03/05/12, 153324/55/76
 158754/791/797/817/849/851/853/901/909
 170305-07/09, 180101/07/09/10/12-14, 185101/07
 185135/38/50, 220001/05/10/15/22/28/30/31

221141, 321903, 322484/85, cs 9521+5976+6137
+5965+5921+5964+1200+6042+6024+5955+6158
DR73117/73946/75403/77802, 965576/77
966098/99, DVTs 82201-04/06-10/12-20/22-25/27
82229/30

5th August:

Doncaster 08.25-15.30:

08669/724, 20308/309, 43208/238/257/272/290
43295/299/300/305-307/309/310/315/317-320/465
43467/480/484, 47812/843, 66059/067/068/094
66533/556/615/705/707/708/750, 67005/08
91102-05/07-14/16/17/19-21/24-32, 142014/19/28
142029/33/94, 144005/10/12, 153302/58, 158752
158787/815/817/844/850/861/901/902, 170303/05
170308/09, 180101/05/07/10/11/13/14, 185102/22
185125/28/35, 220001/02/05/16/17/24/29/33
221126, 322483, DVTs 82200-03/06-10/12-16
82218-20/22-27/29-31

12th August:

Reading 12.40-19.10:

43004/005/009/010/015/017/018/020-030/032/034
43035/037/040/042/053/056/063/069-071/078/079
43086/088/092-094/097/098/122/124/125/127-129
43132-134/137/140/143/145-147/149-156/160-165
43169/43174-177/179/181/183/185/187/188
43190-195/197, 59001/004/102-104/201-203
66030/034/076/116/138/616/955, 150001, 165101
165103-106/108-114/116/123/124/126-132/134
165135/137, 166201-03/06/08-12/15-17/19/20
180103/04/06/08, 220001/09/10/14/18, 221129/30
221133/38, 450017/094, 458005/07-10/12/14/16
458019-22-25/28-30

15th August:

Clapham Junction 12.00-13.40:

159001/003/004/008/010/012/018/101, 377104-106
377109/110/113/114/118/121/128/132/133/140
377142/144/145/152/157/160/205/306/315/319
377323/401/410/414/416/420/421/423/424/427
377433/436/438/441/452/459/464/465/471
377473-475/604/605/607/609/611-614/621/624
377702/703/705/707/708, 378137/142/147/207
378217/218/222/224/227/230, 442402/04/09/13-16
442418/22/23, 444008/12/13/16/17/35/39/40/42
450001/002/004/006-011/016/017/023-025
450029-031/036/038-040/042/072/074/077/086
450091/094/102/103/105-108/110/113/118-124
450126/544/545/548/551/553/555/556/559
450561-563/565/569, 455701/703/704/706-708
455711/714-718/721/722/724/725/727/728/730
455731/733/736-740/750/806/814/817/820/821
455823/831/838/843/846/848/850/851/855/856
455858/864-871/873/874/901-904/909/912-914
455917-920, 458010/011/ 013/014/022/023/025
458027/030/531/533/535

East Croydon 13.50-14.35/15.15-16.15:

171721/722/724/728/801/804/806, 319219/367
319372/428/430/431/443/452/459/460, 377103
377104/109/110/112/114-116/118/119/124/125
377128/130/131/133/135/138/141/144/147/148
377155-157/160/161/203/205/206/209/210/303
377304/310/319/323/401/402/407/410/411/414
377416/417/423/424/428/429/431/432/434-436

377439/441/444/447/448/450/451/453-455/457
377459/462-466/470-472/475/501/506/508
377510-513/516/609/705/707, 442402/04/09/10/13
442415/16/18/22, 455806/815/816/820/835/837
455844/846, Trams 2531/34/35/48/56/57

London Bridge 16.30-18.45:

171728/801/802/804/806, 319012/424/429/449
375305/309/601/607/611-616/618/622/623/627
375629/701-703/707/708/710/714/806/808/813
375815-817/826-828/830/901/904/905-921
375923-927, 376001/03-06/08-14/16-23/27-29
376031-33/35/36, 377103/106/111/115/117/118
377123/130/132/134/140/148/158/159/163/201
377208/214/301/303-305/307/311/312/314-317
377319/320/322-325/328/401/403/404/406/422
377428/430/431/434/448/451/452/458/462/466
377467/469/473/507/509/515/518/520/522/523
377611/613/704, 442401/03/08/12, 455802/805
455807/809/810/812/813/815/816/818-822/824
455828/830/832-842/844-846, 465003/005-008
465010/013/014/016-018/022/023/025/027-037
465039-042/044-047/049/050/311-315/158/159
465161/162/164/169-178/182/184/185/187-189
465191-197/235/236/238/239/241/243/244/246
465247/249/250/901/904-906/912/917/919-921
465923/926-931, 466001/02/06/08/14/16/18/19/23
466025/27/29/30/32/34/35/39/41/43

Gordon Kirkby:

22nd August:

Motherwell MPD: 68005/6

Bo'ness:

Steam: 62712, 65243, 68095, 80105
Diesel: D2767, D3558, 20020, 25235, 26004/24
27001/5, 37025/403/703, 47643

Edinburgh Trams:

251-255/59/260-65/67-69/71-74/77

Haymarket 13.00-13.15:

158869, 170396, 170416-18/27/34/51/55/56
334011/25/27, 350404/10,

Edinburgh Waverley 13.30-18.30:

43251/74/99/309, 47501,
47810, 67007, 82203/20/29/30, 90039, 91102/03/1
5, 156434/446/449/478/495/503, 158706/13/17/18/
22/24-28/31/33-35/38-
41/82/86/89, 170394/6, 170401/04/09/11/13/17-
19/21-23/25-28/30/31/33/34/50/51/53/59/60/61/70-
72/76/78, 221120/22/38/40, 334002/04/08/09/11-
14/16/17/19-30/33/34/36-38/40, 350402/4/7/9/10
380101/2/4/5/7/11, 390006/126

Haymarket 18.30-1915:

43206/77, 47501, 47810, 158706/13/24/25/27/35/3
9/86, 170396, 170401/05/13/17/19/21/23/26/33/53/
56/61/73/77/78, 221105/18, 334011/25/27/33/36/38
380107

Trevor Roots:

27th August:

Aviemore: 37685, 68006, 158709/726, 170409

31st August:

Keith:

66003/054/103/130/182, 170403/409, DR73932

MISCELLANEOUS LOCOS

*The first page of Shunting Locomotives and the Miscellaneous Locos section in the **UK Combine** include some odd non-classified survivors built for pre-nationalisation companies, often for evaluation of which some were eventually ordered in larger numbers, comprising a fleet. This occasional series features these locos. Previous articles / photo spots featured: 85049 and 97701 - September 2010 p8, 18000 – March 2012 p32.*

This article features two shunters built as demonstrators by the North British Locomotive Co. (NBL) and used on the Western, London Midland and Southern regions of British Railways and both have survived into preservation. Built in 1954 they are 0-4-0DH with 225hp Paxman 6VRPHX Engines driving a Voith transmission. Both are un-named & un-numbered.

right
 'Tiger' [27415]
 Scottish Railway
 Preservation Museum,
 Bo'ness,
 11th May 2012
 (still in same position
 as of July 2014)



'Tiger' worked at the Esso Fawley oil refinery. It was bought by the IoW Railway in 1980 but moved to the SRPS in 1991.

left
 'Tom' [27414]
 Horeshay, Telford Steam
 Railway,
 27th April 2014



PRESERVATION NEWS

Strathspey Railway by Trevor Roots:

Following on from the report in the March issue, pages 28-29, D2774 is back in one piece inside the shed as seen below on the 27th August 2014.



During July and August passengers were able to once again travel beyond Broomhill station, the first time since the official closure on 18th October 1965. On Wednesdays and Thursdays the two car Cl.117 DMU 51402 + 51367 ran two services daily to the end of the current northern extension short of the River Dulnain bridge.



51402 + 51367 on the penultimate day of operation at the bufferstops adjacent the River Dulnain bridge, re-laid in February, 27th August 2014

STIRLINGSHIRE SIGHTINGS

by **Derek Sneddon**

The following sightings are from Camelon Station & nearby Carmuir's Junction with an occasional sighting from Falkirk. Only freight and notable loco hauled workings are shown together with the diagram code, time, origin and destination (see location codes)

16th July

04.18 66113/119 6K30 MN-Keith
05.10 66601 6H51 OX-IS
05.45 66426 4H47 MN-IS
07.40 66074 6G25 MN-ES
13.00 66305 4A13 GM-AB
19.25 56302 6M65 GM-Sinfin

17th July

06.30 66017 6A32 MN-AB
13.00 66424 4A13 GM-AB

18th July

00.30 66114 6H66 MN-IS
05.45 66421 4H47 MN-IS
06.55 56302 6R46 GM-PW
07.40 66055 6G25 MN-ES
13.00 66303 4A13 GM-AB

19th July

05.45 66303 4H47 MN-AB
10.05 66082 6A32 MN-AB
13.00 66305 4A13 GM-AB
13.30 66111 6S36 DS-GM

21st July

05.45 66303 4H47 MN-IS
08.40 47804/854 1H88 Wemyss-ED

22nd July

05.45 66303 4H47 MN-IS
06.55 56302 6R46 GM-PW
08.30 66601 6A65 OX-AB
13.30 66111 6S36 DS-GM

23rd July

04.18 66023/114 6K30 MN-EL
07.40 66130 6G25 MN-ES
08.55 37259/688 6S9 CL-GE
13.00 66423 4A13 GM-AB

24th July

05.45 66303 4H47 MN-IS
06.30 66192 6A32 MN-AB
08.30 66601 6A65 OX-AB
13.00 66426 4A13 GM-AB
13.30 66111 6S36 DS-GM

25th July

05.10 66601 6H51 OX-IS
05.45 66303 4H47 MN-IS
06.55 56302 6R46 GM-PW

26th July

05.45 66303 4H47 MN-IS
13.00 66423 4A13 GM-AB

27th July

13.00 66432 4A13 GM-AB

28th July

05.45 66303 4H47 MN-IS
13.00 66422 4A13 GM-AB
14.20 66114 6D61 RI-GM

29th July

05.45 68005 4H47 MN-IS
06.55 56302 6R46 GM-PW
08.30 66622 6A65 OX-AB
13.00 66303 4A13 GM-AB
13.30 66192 6S36 DS-GM

30th July

04.18 66111/113 6K30 MN-Keith
05.45 68005 4H47 MN-IS
07.40 66055 6G25 MN-ES
19.25 56302 6M65 GM-Sinfin

31st July

05.10 66622 6H51 OX-IS
05.45 68005 4H47 MN-IS
06.30 66016 6A32 MN-AB
08.30 66601 6A65 OX-AB
13.30 66192 6S36 DS-GM

1st August

00.30 66114 6H44 MN-IS
05.45 68003 4H47 MN-IS

2nd August

05.45 66432 4H47 MN-IS
10.05 66104 6A32 MN-AB
13.00 66304 4A13 GM-AB

3rd August

13.00 66304 4A13 GM-AB

4th August

05.45 66432 4H47 MN-IS
08.30 66622 6A65 OX-AB
13.00 66421 4A13 GM-AB

5th August

05.45 66432 4H47 MN-IS
06.55 56302 6R46 GM-PW
13.00 66302 4A13 GM-AB
13.30 66111 6S36 DS-GM

6th August

05.10 66601 6H51 OX-IS
05.45 66432 4H47 MN-IS
07.40 66192 6G25 MN-ES
13.00 66301 4A13 GM-AB
19.25 56302 6M65 GM-Sinfin

7th August

05.45 68005 4H47 MN-IS
06.30 66092 6A32 MN-AB
08.30 66601 6A65 OX-AB
13.00 66302 4A13 GM-AB

8th August

05.30 56094 6S96 Sinfin-GM
05.45 68805 4H47 MN-IS
13.00 66426 4A13 GM-AB

9th August

05.45 68005 4H47 MN-IS
10.05 66194 6A32 MN-AB
13.30 66111 6S36 DS-GM

10th August

13.00 66433 4A13 GM-AB

11th August

05.45 66432 4H47 MN-IS
08.30 66622 6A65 OX-AB
08.50 37516/685 1H88 Wemyss-ED
13.00 66433 4A13 GM-AB

12th August

06.55 56094 6R46 GM-PW
13.00 66422 4A13 GM-AB
13.30 66089 6S36 DS-GM
66111 6D61 RI-GM

13th August

05.45 66432 4H47 MN-IS
07.40 66114 6G25 MN-ES

14th August

05.10 66622 6H51 OX-IS
05.45 68006 4H47 MN-IS
06.30 66089 6A32 MN-AB
13.00 66305 4A13 GM-AB

15th August

05.45 68006 4H47 MN-IS
06.55 56094 6R46 GM-PW

Location Codes:

AB Aberdeen
CL Carlisle
DS Dalston

ED Edinburgh
EL Elgin
ES Earleseat

GM Grangemouth
IS Inverness

MN Mossend
OX Oxwellmains

PW Prestwick
RI Riccarton

RAIL TOUR NEWS

Chesham 125th Anniversary by James Holloway:

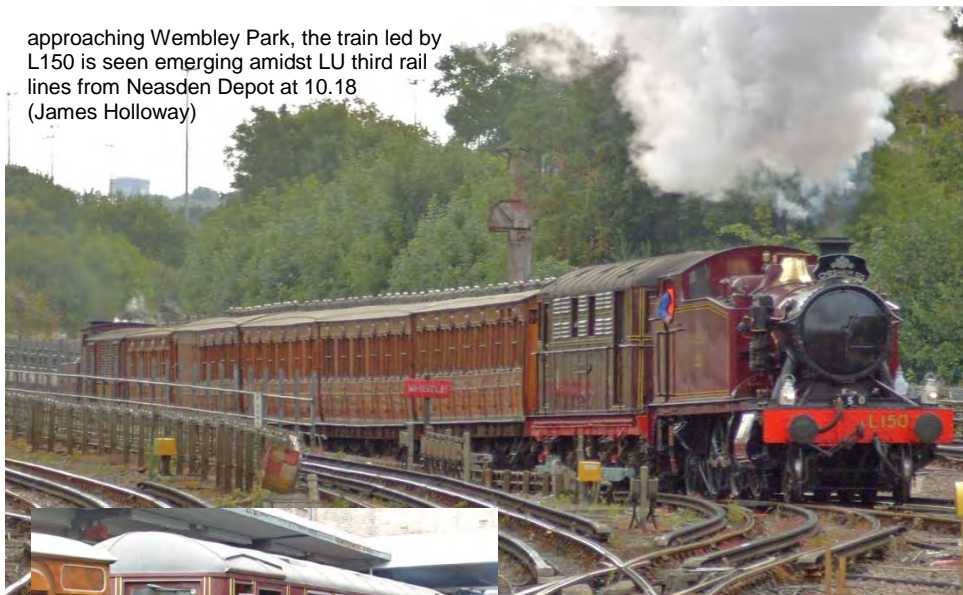
To celebrate the 125th anniversary of the Chesham branch four rail tours were run on each day over the weekend of the 16-17th August 2014, these being:

Wembley Park - Rickmansworth (steam hauled).

Rickmansworth - Chesham and return to Rickmansworth (steam hauled out, electric back).

Rickmansworth - Chesham and return to Harrow-on-the-Hill (steam hauled out, electric back).

approaching Wembley Park, the train led by L150 is seen emerging amidst LU third rail lines from Neasden Depot at 10.18 (James Holloway)



I managed to witness the first run at Wembley Park which left at 10.23. The train consisted of 2-6-2T L150 (5521) + Bo-Bo 630V DC electric 12 'Sarah Siddons' + 387 + 412 + 368 + 394 (Bluebell Rly bogie Chesham set) + 4wh Jubilee Coach 353 + Metropolitan milk van 3 + 4-4-0T Metropolitan 1.

above
12 'Sarah Siddons'
awaiting departure,
Wembley Park

right
Met 1 on the rear departing
Wembley Park
(James Holloway)



RAMBLINGS OF A RAIL ENTHUSIAST

by David Spencer – 1969 - 1971

I try to provide extra detail or follow up photos on the items of traction shown in photos, other than number, date and location as provided by Dave, including what became of them particularly with regards to preservation, ed.

1969: On the 13th June a mate and I hired a car and amongst other places we visited was the narrow gauge Kalavassos Mine Railway and got two engines stabled, Nos 2 and 9 at Vasilikos (see photo below) and No.3 working. On the 3rd and 6th August on a holiday in Israel I had two journeys by rail, from Tel Aviv to Jerusalem and from Haifa to Tel Aviv. Finally on the 28th November I visited the remains of Nicosia station. On the 4th December my services career came to an end and I came home a free man. On the 30th December I went to look at Birmingham Snow Hill, a tragedy to see such a huge and beautiful station being torn to little bits and I took many photos.



1970: As I was effectively discharged direct from Cyprus, my re-settlement course was after I left the services and was held at Catterick after Christmas, which ensured regular Birmingham to Darlington returns and a close up of the remains of the military Catterick Camp branch. Birmingham Snow Hill was revisited on the 6th February.

At this point I considered stopping my story, as what little I did, was as a tourist and apart from the odd hour here or there railways took second place in my life. My marriage came first, although I never let the chance of rail involvement go if the opportunity presented itself. So over the years I visited a lot of preservation sites when on holiday. However I decided to continue checking out what remained of the railway infrastructure, so whilst on holiday in Porthcawl, the remains were inspected as were those at Maesteg. The Seven Valley was featured on another family visit with mother-in-law, Tyseley open day was attended and in August another trip to the Forest of Dean with Roger's parents were my sole visits.

1971: I had a good old fashioned railway day on the 10th January when on my bicycle I ran off almost two full films on closed stations. The areas covered were Birmingham and Black Country, Harborne branch, Oldbury and Langley Green to Oldbury branch, Dudley to Wolverhampton line as far as Priestfield and then back to The Hawthorns Halt on the main line, with odd diversions to the LM Stour Valley line and some of the loops off it. In my garage I still have the street by street instructions to myself (I was a sat nav before my time thanks to an A to Z map!). Later in February I did Snow Hill and Birmingham Central Goods depot again and a full morning nosing around Hockley station and its massive goods area. On the 17th April we went on a the Eskdale Venturer special from Birmingham

New Street to Ravensglass and Carnforth with D245 as haulage, 'River Mite' was haulage on the Ratty and we had full run of the sheds area. Moving on we also stopped to visit Steartown at Carnforth which at the time had loads of industrials and not a lot of BR stock and French 231K22 which has long since been repatriated back to its own country. This was the first special I travelled on that had the now standard A5 size booklet.

The 1971 outing with Roger's parents was at my request to Derbyshire with the sole railway interest being Wirksworth station and the Cromford C&HPR shed but we looked closely at the Cromford canal and visited the Tramway Museum at Crich. On 12th September we visited the Vale of Rheidol I assume on a day trip and with a two train operation 7 and 8 were working. This was the year when BR gave in to the steam lobby and allowed 'King George V' to run specials and I photographed it passing close to my old home and Tyseley again had an open day on 3rd October.

photos by David Spencer (to be cont)

LIGHT RAIL & METRO NEWS

Midland Metro:

Work to upgrade the worn out street section track through Wolverhampton starts on the 6th September and is due to take 12 weeks.

Metrolink: *the following information is kindly provided by Geoff Hope.*

A flying visit to Manchester Airport on Tuesday 15th July revealed OHL in place and work on the tram stop was in the advance stages of being completed. By the early hours of Tuesday 19th August 3066+3075 had finally reached the Airport on line testing duties in readiness for opening later this year.

On Thursday 17th July the Park & Ride facility at Radcliffe on the Bury line, closed in March for construction of an extra deck, reopened ahead of schedule with an additional 119 new spaces increasing capacity to 369 spaces

One platform on the inbound side of the new island platform at Deansgate & Castlefield opened to passengers on Tuesday 26th August. The current inbound platform will be closed and demolished as redevelopment of the stop continues. The outbound platform will be retained with the island platform directly opposite rather than staggered platforms as in the past.

Work on the Second City Crossing (SCC) is moving on from Exchange Square towards Albert Square and Princess Street to divert the utilities pipes and cables. Round the clock working will be in place during August-October to accommodate Albert Square festivities and Christmas Markets to carry on as normal during November and December.

To protect the heritage of Albert Square, the cobble stones will be removed, cleaned then re-laid by a team of restoration experts during January-March 2015 after the utility works are complete. A temporary road surface will be laid for November-December.

T68s 1015/1010 & 1014 left Old Trafford depot for Booths, Rotherham on Thursday 24th July/Thursday 14th August and Wednesday 20th August respectively. 1013 is next in line for component recovery and will be the 13th tram for disposal.

T68's 1026/1024/1022 & 1016 left Old Trafford depot for Long Marston on Friday 25th July/Wednesday 30th July/Friday 8th August and Thursday 21st August respectively joining Midland Metro T69-014 for the UK tram test project.

3085 was observed on the Eccles-Ashton-under-Lyne service on Tuesday 5th August. 3086 is undergoing final preparation for public service at Old Trafford depot. 3087 arrived at Queens Road depot on Saturday 16th August and will undergo commissioning and mileage accumulation ready for public service.

RAILWAY GLOBETROTTERS

by Ray Smith

India 2013:

February 18th 2013: As last year we had a pre dawn visit to the Taj Mahal. We entered at sunrise but the splendid view soon disappeared in the incoming mist! Now on to Delhi and a lunch stop at the same restaurant as last year which overlooked the Agra – Delhi main line. After the food was gulped down many went lineside before continuing to Delhi.

on the Agra – Delhi main line at Kur Se Kalan WAP-5 30050 heads towards Agra, 18th February 2013



moments later 30050 WAP-4 22760 passes in the opposite direction, 18th February 2013



on the outskirts of Delhi an EMU with 20056 leading slowly passes PW workers on the adjacent track, 19th February 2013



February 19th 2013: Up to 14.30 it was sightseeing in Delhi before going to the Delhi National Railway Museum for an enjoyable two hours. Last year the steam monorail locomotive and coach were away for repair. This is Patiala State Monorail Tramway locomotive No.4 built in Berlin and operated from 1907 to 1927. Once the system closed the locomotive and coach were locked away and forgotten about for many decades so it is amazing that this survived. We had requested for it to be in steam to give rides to our group.



Up to leaving the UK this had not been confirmed but when we arrived it was there, in steam. We were told that it could only take 6 people at one time so the first 6 waited and waited for it to move but it kept stalling. It appeared to be a two cylinder locomotive with only one working. Workers tried pushing it, using crowbars to lever it and eventually it made one circuit. Half an hour later it did another circuit then after another hour it just made a third before giving up. For those wondering how the monorail steam locomotive does not fall over, the monorail takes almost 95% of the main load whilst the balancing ground wheel takes the other 5%. Apart from the above problem it is a very good museum as can be seen from the following photos which compliment the ones shown in March 2013 issue.



BB&CI 4-6-0 31652, 19th February 2013



SIR 2-6-4T 37156, 19th February 2013



RMR, F class 0-6-0 No. 734



EIR 0-4-2T 36863, 19th February 2013



pretty much based on Robinsons O1 with detail differences, NWR-HGC 2-8-0 No. 1598
19th February 2013



the most powerful steam locomotive and the heaviest used on Indian Railway
Garratt N class 4-8-0+0-8-4, No. 815, a difficult locomotive to photograph as the sun is normally behind it, I was lucky with some cloud cover.



Jaipur State Railways 0-6-0 No. 643, 19th February 2013



Darjeeling Hill Railways, B class 0-4-0ST 777 is "preserved" but most of the locomotives running the everyday service on that line seem to be in better condition! 19th February 2013



O&RR 0-6-0. 26, 19th February 2013



NWR 0-6-2T 707, 19th February 2013



EIR-HPS 4-6-0 24467, 19th February 2013



BNR narrow gauge 4-6-2 688, 19th February 2013

February 20th 2013: Back to Delhi airport for the flight to Bagdogra then on to Siliguri Junction for our own charter train to New Jalpaiguri. This section of the line is still closed due to the knock on effect of the two landslides between Chunbhati and Kurseong. The journey between New Jalpaiguri and Darjeeling took 6½ hours to do the 88 kilometres.



2-8-2 No. 1798 plinthed outside
New Jalpaiguri station.
Recordings of a steam locomotive in action
are played from loudspeakers beside this
locomotive!, 20th February 2013



B class 0-4-0ST 792 **HAWKEYE**
awaiting with our charter train and looking
much better than its preserved classmate 777
(see above), Siliguri Junction ready to take us to
New Jalpaiguri. 20th February 2013

On arrival at the station our train was already in the platform waiting to take us on our 8Km journey. At the front was 792 **HAWKEYE**. With a stop at Siliguri town the journey took around one hour. Everywhere we passed the local children ran out and waved. They had never seen a train on this line apart from our charter last year!



Co-Co class WDG-4, No. 12403, a class of
almost 1000 locomotives, backs onto its freight
train at New Jalpaiguri 20th February 2013



Class WDM3A, Co-Co No. 16202 is stalled at
New Jalpaiguri 20th February 2013

NB The unidentified locomotive on page 32 in the March 2013 issue was ER WDM-2 No. 18040

photos by Ray Smith (to be cont)

ADVERTISEMENT – GB Bus Group (GBBG)

Belonging to ICRS tells us you have an interest in vehicles involved in travel, whether it is to do with their design or simply number-crunching. That being the case, have you also got an interest in **buses** in the UK ? **GBBG** may already be known to you from its link with ICRS in the past, but if you haven't thought about joining us before, why not reconsider? Our annual membership subscription is **£15.60**, so why not visit our website www.gb-bg.co.uk or write to our Secretary, Hazel Roberts, at 37 Abbey Place, Crewe CW1 4JR for further information? It could well be of benefit to you as a fellow transport enthusiast.

FREIGHT MATTERS

WAGON UPDATES by Trevor Roots:

To allow members to keep their copy **UK Wagons** as up to date as possible, changes are provided via this spot every month. The 2014 edition is now out so please let Trevor know if you have any amendments or wish pass on any other helpful wagon information, contact details on page 2.

New:

IIA Bogie Covered Biomass Hoppers 83.70.0698.101-120

Nuclear Flask Carriers 11.70.9229.001 to 010

GWML Electrification Factory Train:

KFA 99.70.9131.019-0 (ex 93263), **MPV YXA** 99.70.9131.020-8 (no cabs)/021-6/022-4/023-2

confirmation of other ex KFAs converted to 99.70.9131.xxx-x are as follows:

93258 to 002-6, 93276 to 004-2, 93242 to 008-3, 93280 to 009-1, 93260 to 012-5, 93243 to 016-6, 93256 to 017-4

Scrapped:

HGA 4wh Ballast Hoppers: 390537/645/648/650/667 390516/520/538/557/558/580/583/611/617 628/637/638/643/647/663/666/670

Preserved: Bogie Seacows YGB 982608/619/667/849 **YGH** 982595 from TJ Thomson to NYM. Although not usually mentioned here, this has meant two preserved walrus ballast hoppers, 62058/064 from NYM were sent to TJ Thomson for scrap in June. There are 7 others still in preservation.



FREIGHT NEWS

From September GBRf is to operate four trains per week conveying gypsum from West Burton PS to Portbury Docks, Bristol.

STOCK CHANGES

It is hoped that all major changes recorded below will help you keep the **UK Combine**, **Pocket Book** and **Name Directory** up to date, (numerous pool code changes will not be recorded). In order to compile as accurate and up to date list as possible, can members please pass on their observations, particularly name changes and multiple unit reformatations to the editor, **Trevor Roots**.

Misc. News:

The latest Cl.68s have arrived, though 68001 only briefly stayed on UK soil before heading by road off to the Innotrans Exhibition, Germany via Immingham Docks.

DBS has started painting out EWS branding on Cl.66s and applying DBS stickers to cabsides. No photo yet.

The Prentendolino set is to be handed back to Porterbrook as it will be no longer needed from November.

59003 has been bought by GBRf not DRS.

DBS has virtually sidelined its entire 08/09 shunter fleet with another 14 stored leaving only two still active 08623 & 09106.

New:

Locos: 68001 68012 68013 68014

Locos Repatriated: (from France)

66211 66218 66225 66242

Converted EMU: (ex-Cl.460) 458532

Re-Numbered:

Mk3 Coaches:

41003 to 42551	41017 to 42556
41019 to 42557	41093 to 42567
41101 to 42568	41105 to 42569
41121 to 42571	41123 to 42572
41127 to 42573	41129 to 42574
41131 to 42575	41141 to 42577
41143 to 42578	

Transfers:

Locos:

D2158 GCR to TJH D3690 BAT to GCR

31289 NLR to RSM 33103 BBR to BO

EMU: (* for repair)

MLV 68002 EKR to SRC*

Coaches:

6392/97 NL to (LM)

Names:

New:

57303 *Pride of Carlisle* (from 47712)

D5061 *Ian Johnson*

43155 *Red Arrows: 50 Seasons of Excellence*

66740 *Sarah*

68009 *Titan*

73962 *Dick Mabbutt*



66740 'Sarah' (Carl Watson)



66738 'Huddersfield Town' as reported last month (Carl Watson)

LIVERIES



not recorded previously, 37518 in Ian Riley's version of InterCity swallow livery, Carlisle 13th August 2014 (Colin Pottle)



above 73140 (E6036) hauling Queen Mary brake van 56296 showing off its part painted revised NSE livery, the other side had yet to receive the horizontal stripes (see **PRESERVATION GALAS**), High Rocks, Spa Valley Railway (12.50) 3rd August 2014 (Colin Pottle)



above 66418 along with 66413 (see **TRAFFIC & TRACTION** for photo at Swindon) now sport Freightliner branding on their cabs, Eastleigh 28th August 2014 (Carl Watson)

right 66751 now in corporate GBRf livery, Eastleigh Works, 18th August 2014 (Carl Watson)



left recently reinstated to traffic (see July issue) 56103 shows off its ex-Fertis livery minus branding on the rear of 6Y57 Feltham - Totton Yard RailVac Train, Eastleigh 24th August 2014 (Norman Smith)

LIVERY...RIP

91118 the last CI.91 in ex-GNER livery has been repainted. The photos below show 91118 in its interim GNER/NExEC/EC livery worn since 2009, with the former GNER branding still prominent and in its former GNER livery in 2007. A potted history of the CI.91 liveries can be seen in the September 2011 issue, pages 8-15.



above & left
91118 the last in ex-GNER livery
showing the outline of GNER
branding, King's Cross
20th April 2013

below 91118 in GNER livery
and then named
'Bradford Film Festival'
King's Cross, 27th March 2007



NEW STOCK



left
66752
'The Hoosier State'
Eastleigh Works,
27th August 2014
(Carl Watson)



above
as reported in the last issue so here is 68011, one of two new Cl.68s in Chiltern base livery passing through Crewe in the rain during delivery to Gresty Bridge behind 68010, 68009 & 57012 (also see **TRACTION & TRAFFIC NEWS**) 1st August 2014
(James Holloway)

right
68010 + 68011
heading northbound
through Penrith on test
21st August 2014
(Gordon Kirkby)



ICRS SALES

We have now published 10 books since 2009, 7 of which are in print and available or due for imminent release (see below). Of our smaller books, **UKRS04 UK Name Directory** will not be updated until late 2014. Books can be ordered either:

online via PayPal at **www.intercityrailwaysociety.org**

or by post from (please make cheque / PO payable to ICRS)

Carl Watson, ICRS Publications, 14, Partridge Gardens, Waterlooville, Hampshire PO8 9XG

All books, except **UKRS01 Pocket Book**, are A5 wire bound printed on 90gm paper with plastic coated covers allowing them to be laid flat.



BOOKS: (all Members receive up to 30% discount on ICRS books)

		Price	
Titles:		Member	Non Member
UKRS01	UK Pocket Book 2014	£7.00	£9.99
UKRS02B	UK Combine Summer Edition 2014	£12.00	£15.99
UKRS03	UK Wagons 2014	£9.50	£12.99
UKRS04	UK Name Directory 2012	£9.50	£12.99
UKRS09	Irish Railways 2014	£6.50	£8.99
UKRS10	Ultimate Sighting File Vol.1 – Mainline Diesel Locos	£10.00	£13.99
UKRS11	Ultimate Sighting File Vol.2 – Shunters, Mainline Electric & Prototype Locos	£8.00	£10.99

Proposed: (publication date to be confirmed)

UKRS12	Ultimate Sighting Files – Diesel Units	TBC	TBC
UKRS13	Ultimate Sighting Files – Electric Units	TBC	TBC

SUNDRIES:

Pocket Book cover	£1.50	£2.50
TRACKS A5 Cordex binder (takes 12 issues @ 48 or 64 pages – 2014 onwards) LARGE	£7.50	£9.99
TRACKS A5 Cordex binder (takes 12 issues @ 32 or 40 pages – 2011-13) MEDIUM	£7.50	£9.99
White Polo Shirts SMALL / MEDIUM / LARGE / XL / XXL	£18.00	£25.00