

# TRACKS



**Inter City Railway Society**  
March 2015



# Inter City Railway Society

founded 1973

[www.intercityrailwaysociety.org](http://www.intercityrailwaysociety.org)

**Volume 43 No.3**

**Issue 507**

**March 2015**

The content of the magazine is the copyright of the Society  
No part of this magazine may be reproduced without prior permission of the copyright holder

<b>President:</b>	<b>Simon Mutton</b>	(01603 715701)
	Coppercoin, 12 Blofield Corner Rd, Blofield, Norwich, Norfolk NR13 4RT	
<b>Chairman:</b>	<b>Carl Watson</b> - <a href="mailto:chairman@intercityrailwaysociety.org">chairman@intercityrailwaysociety.org</a>	Mob (07403 040533)
	14, Partridge Gardens, Waterlooville, Hampshire PO8 9XG	
<b>Treasurer:</b>	<b>Peter Britcliffe</b> - <a href="mailto:treasurer@intercityrailwaysociety.org">treasurer@intercityrailwaysociety.org</a>	(01429 234180)
	9 Voltigeur Drive, Hart, Hartlepool TS27 3BS	
<b>Membership Sec:</b>	<b>Trevor Roots</b> - <a href="mailto:membership@intercityrailwaysociety.org">membership@intercityrailwaysociety.org</a>	(01466 760724)
	Mill of Botary, Cairnie, Huntly, Aberdeenshire AB54 4UD	Mob (07765 337700)
<b>Assistant:</b>	<b>Christine Field</b>	
<b>Secretary:</b>	<b>Stuart Moore</b> - <a href="mailto:secretary@intercityrailwaysociety.org">secretary@intercityrailwaysociety.org</a>	(01603 714735)
	64 Blofield Corner Rd, Blofield, Norwich, Norfolk NR13 4SA	
<b>Events:</b>	<b>Louise Watson</b> - <a href="mailto:events@intercityrailwaysociety.org">events@intercityrailwaysociety.org</a>	Mob (07921 587271)
	14, Partridge Gardens, Waterlooville, Hampshire PO8 9XG	
<b>Magazine:</b>		
<b>Editor:</b>	<b>Trevor Roots</b> - <a href="mailto:editor@intercityrailwaysociety.org">editor@intercityrailwaysociety.org</a>	
<b>Sightings:</b>	<b>James Holloway</b> - <a href="mailto:sightings@intercityrailwaysociety.org">sightings@intercityrailwaysociety.org</a>	(0121 744 2351)
	246 Longmore Road, Shirley, Solihull B90 3ES	
<b>Photo Database:</b>	<b>John Barton</b>	(0121 770 2205)
<b>Website:</b>		
<b>Manager:</b>	<b>Trevor Roots</b> - <a href="mailto:website@intercityrailwaysociety.org">website@intercityrailwaysociety.org</a>	(01466 760724)
	Mill of Botary, Cairnie, Huntly, Aberdeenshire AB54 4UD	Mob (07765 337700)
<b>Yahoo Administrator:</b>	<b>Steve Revill</b>	
<b>Books:</b>		
<b>Publications Manager:</b>	<b>Carl Watson</b> - <a href="mailto:publications@intercityrailwaysociety.org">publications@intercityrailwaysociety.org</a>	
<b>Publications Team:</b>	<b>Trevor Roots / Carl Watson / Eddie Rathmill / Lee Mason</b>	

## Contents:

Officials Contact List.....	2
Society Notice Board.....	3-6
Events.....	7
ICRS Sales .....	64

## Current News / Sightings:

Franchise News .....	25
Freight Matters .....	57-58
Gloucester / Stirling Sightings.....	47-50
Infrastructure News .....	46
Light Rail & Metro News .....	55-56
Liveries .....	62-63
New Stock.....	59-61
Out & About Sightings .....	26-34
Stock Changes.....	59
Traffic & Traction News .....	14-25

## Feature Articles:

Borders Railway.....	36-45
Eastleigh Works Report.....	8-12
Off the Beaten Track.....	35
Rail Tour Photo Spot.....	13
Railway Globetrotters.....	51-54

## Front Cover Photo:

Thompson B1 4-6-0 61306 'Mayflower' t&t 47580 'County of Essex' approaching Winchester at speed at 13.16 with the return 08.57 1Z82 London Victoria - Eastleigh 'Cathedrals Express Valentine Day Circular 1', 14<sup>th</sup> February 2015 (Andrew Buckley).

## £2.50 where sold separately

Printed & distributed in the UK by Henry Ling Limited, at the Dorset Press, Dorchester DT1 1HD

# SOCIETY NOTICE BOARD

## Editor's Comments:

We have had the best month for new members since May last year (40) with 38 joining in February plus another 4 already on the first day of March. What is pleasing is those who have recently joined are out promoting the Society, keep up the good work. If all members can sing our praises and flash our books and **TRACKS** about, then we can grow even stronger. The quality of our books and **TRACKS** must also be a big factor in attracting back former members, 11 in February. Thanks to those members who have been sending in a sae with your membership renewal. I've said it before but I will again thank all the contributors to **TRACKS**, which yet again has reached new heights with 22 members sending in photos including 3 newbies. This does however lead to some funny moments as I am sure several members have stood alongside each other or at least in the same location taking the same photo but not knowing they are both in ICRS !! Apologies that B1 4-6-0 61306 *'Mayflower'* appears a few times but as it has just gone onto the mainline and no less than 6 members saw it on 4 different days, I thought you wouldn't object to seeing it more than once...at least you get every angle and I quite like the interim BRITISH RAILWAYS livery, which is not often seen. With so many contributors we are finally getting good coverage across the UK but we could still do with a few more in deepest West Country. Hopefully I will get to meet many of you at our visits starting with the AGM at Eastleigh Works, Crewe Gresty Bridge or Swanage Diesel Gala.

I have finally managed to write up my report on the Borders Railway !! Thank goodness there are 64 pages, though you'll probably be stir crazy after wading through the photos. I have split it into two sections to spread the pain, with Part 2 covering Fountainhall to Tweedbank which I hope to add to on my journey down to the AGM to show the track at these locations, which is now complete. What with a big article on the Borders Railway and combined, 21 pages featuring members sightings and photos the number of other articles has been reduced, a temporary necessity.

It's the start of another exciting round of re-liveries with The Virgin Trains East Coast (VTEC) franchise starting on the 1<sup>st</sup> March and just as I was about to send off **TRACKS** to printers I received a photo. Clearly there will be more photos to come during the month.

To extend the life of Pacers beyond 2020 and provide an economic answer to a DMU shortage, Porterbrook is funding the re-building of 144012 by RVEL, Derby. Long loathed by those who use them regularly they at least do allow one of the best views from current rolling stock with few blank walls by seats.

A small victory for imperial units has been won by the UK government against the EU directive that all EU railways use metric units. However the Rail Safety & Standards Board (RSSB) is conducting research into the feasibility of future metrification.

## AGM:

The AGM is on Saturday 21<sup>st</sup> March at Eastleigh Works. The AGM will start at 11.00 and go through to 13.00. Buffet lunch will follow for those that attend. This will be followed by a guided tour of the Works, approx 13.30 - 15.00. The room is booked for the whole day. There is another visit going on in the morning, hence ours is after the AGM in the afternoon. The cost of the tour is normally £10, which goes to charity, but you will only pay £5, payable on the day with the other £5 subsidised by the Society.

With only a week to go when you read this, please contact Louise Watson by email only asap, stating whether you are attending the AGM (including buffet lunch) and tour or the tour only.

## Membership Matters:

**Subscriptions:** Annual - £16.00, Five year - £75.00 (currently saving £5.00 but will save £12.50 against proposed increase...must be worth considering before May 2015.)

**NB.** Having been held for 6 years, the rates are proposed to rise modestly from May 2015 (AGM) to £17.50 (annual) and £80.00 (5 year – saving £7.50), to help cover increased costs of production / delivery of **TRACKS** and the 33% increase in size to 64 pages. **TRACKS** has actually increased 228% since the rate was originally set in 2009 as it was 28 pages printed in black & white !! Both paper and postal costs have risen considerably since the last increase and though the books have subsidised

**TRACKS** since 2011 and will continue to do so, the deficit gap between income from the standard member annual rate and production / distribution costs from January 2015 is now £2.48 without adding any further membership admin costs.

ICRS Membership gives you:

- **TRACKS** a high quality full colour 64 page monthly magazine - covering all aspects of railways.
- up to 30% discount on all ICRS books (7 currently available).
- occasional members only visits to railway facilities.
- the latest issue of **TRACKS** emailed (on request) 10 days prior to receiving printed version.
- an informative website, with access and indexes to previous issues of the magazine.
- 10% discount on Ian Allan books (direct sales from IA only).

**New Members:** (\* re-joined)

Russell Barker\* (Pontypool), David Berg (London), Robert Bilsland (Newtownards, Northern Ireland), Gary Booth (Leeds), Alan Brooks (Crewe), Mark Burder (Stockport), Anthony Burnham\* (Bishops Cleeve), Kieth Carr (Castleford), Michael Coltman (Burton-on-Trent), Richard Cowen (Weston Colley), Charles Cross\* (March), James Dobson (Beckenham), Mark Dodson (Bromley), Alastair Doggett (Tonbridge), David Dowling (Bracknell), Stephen Dudley\* (Cardiff), Trevor Eyre (Sutton-in-Ashfield), Simon Fulton (Pinner), Adrian Griffith (Doncaster), Ian Harper\* (Cosby), Paul Holland (Havant), Terry Holland (Billericay), David Huby\* (York), Allan Hudnott (Stafford), Graham Johnston (West Linton), Alan Jones (Elgin), Paul Maloney\* (Thirsk), Richard Moynihan\* (Swindon), Richard Novak\* (Chesterfield), David Orriss (Hull), Anthony Perry (Ceres), Geoffrey Pinder (March), Dennis Price (Maesteg), Richard Seston (Sandiacre), Mark Shelley (Nottingham), Robert Spendelow\* (Spalding), David Stevens (Woking), William Storey (Colne), Colin Tarrant\* (Burnley), Michael Tebbutt (Leicester), Andrew Toner (Stalybridge), James Trowbridge (Swindon) - a warm welcome to you all.

**Membership Renewal:** When your membership is due for renewal / overdue this will be indicated on the **TRACKS** address carrier sheet with your expiry date. **Therefore please check your address carrier sheet with your copy of TRACKS...before you dispose of it.** The reverse of the carrier sheet will be printed with a Renewal form, which can be returned or not depending on the method of payment (see below). If no renewal is forthcoming after a second Final Reminder, your membership will be deemed to have lapsed. **Please make sure you complete the Date of Birth section and provide a telephone contact number. If you are ex-directory, don't worry as it will not be revealed to any third parties but it is important that we have a contact number other than by post, which is a costly way to communicate and not covered by the low membership fee.** As a helpful 'reminder', members who have set up a bank standing order will have a note to that effect above your name on the front of the carrier sheet but no renewal form on the reverse. Hopefully then no one will renew twice, as has happened !!

**Methods of Payment:**

**Please note we cannot accept credit card payments over the telephone.**

**Internet Banking (BACS) / Standing Order:** This is the preferred most cost effective, secure and quickest way of paying, for you and the Society and ensures we get the full amount. Bank details will be included on your renewal form.

**Cheque or Postal Order:** Please make payable to ICRS and return your remittance with the form to: Trevor Roots (Membership Secretary) ICRS Membership Renewal, Mill of Botary, Cairnie, Huntly, Aberdeenshire AB54 4UD

**PayPal:** Pay by credit card or debit card via PayPal on the website, however this incurs a cost to the Society (currently £0.74 for £16 & £2.75 for £75)

Please provide your first name and a landline telephone number, whether joining or renewing and your email. If you renew in the first week of the month, whilst **TRACKS** is at the printers, you may receive a Renewal / Reminder form but do not worry as the admin process will naturally see things cross in the post. Please also note that cheques are not presented to the bank until the first week of the following month. As well as receiving a new card, renewals will be acknowledged where possible by email.

**NB. When using PayPal, please read and follow the instructions on the relevant web page.**

**Membership Cards:** Your membership is valid until the end of month as shown by the first two numbers. For those who joined from mid 2009, the second two numbers are the year. Cards will be sent as soon as practicable following your renewal, separate from **TRACKS** distribution. No card is sent to overseas and e-members.



## TRACKS Magazine:

If you so request, the very latest issue of **TRACKS** will be emailed as a pdf when it goes off to the printers so you will get it 'hot off the press' 10 days before you receive the printed version. That means you have the latest news, some within days of the event occurring. Please email the editor, Trevor Roots at [editor@intercityrailwaysociety.org](mailto:editor@intercityrailwaysociety.org) to receive the latest issue by email in addition to the printed version. Similarly the last 11 months are also available by email, but only to members.

### Submissions:

**Articles:** Any information / article on any railway related item will be most welcome for inclusion in the magazine. Your visits, travel stories or anecdotes about any part of the railway network, past or present, home or abroad can give pleasure to others or inform of places to visit. This railway hobby of ours is made all that more enjoyable by the sharing of information, knowledge and experiences. Neatly hand written submissions are perfectly acceptable, but ideally a typed document is preferable. Better still, if you have a PC and internet connection then send an email.

**Photos:** Good quality photographs are always welcome, preferably high res jpeg digital photographs via email (**not compressed please**), but prints are acceptable. Please send an SAE if you wish them returned. Please include full contact details with any submissions, including your first name.

The latest date for articles / info for the **April 2015** issue is **Friday 27<sup>th</sup> March 2015**  
with delivery to members after **Friday 10<sup>th</sup> April 2015**  
please check the **TRACKS** page on the website for date of posting from the printers

**Magazine Distribution:** **TRACKS** is distributed direct from the printers to members in a clear plastic wrapping with an address carrier sheet (reverse printed with a Renewal / Reminder form if appropriate). If any member fails to receive their copy after one week from the above estimated delivery date then please contact the **editor**.

**Magazine Contributors:** (\* new this month) Thanks to **John Brace, Andrew Buckley, Ken Bull, Peter Cole, Brian Derricote, Neil Dix, David Doulton, Bob Eastwood, Martin Evans, Derek Everson, David Giles\*, Michael Hayman, James Holloway, Geoff Hope, Nigel Hoskins, Gordon Kirkby, Colin James, Nigel Mathews, Ian McAlpine, Colin Pottle, Mike Rumens, Norman Smith, John Squire, Derek Sneddon, David Spencer, Graham Stockton, Les Steenton\*, Paul Sumpter, Roger Thomas, Len Turner, Albert Ward, Carl Watson, Steve Wells\*, David Williams, Bill Wilson & Trevor Roots**. We are sorry if anyone has been missed. All photos by **Trevor Roots** unless shown otherwise.

## Member Comments:

May I say how much I enjoy Tracks, a first class, professional publication. Also the spotting books are really good. Just wish I had joined the society sooner and I am now spreading the word among fellow enthusiasts whenever I can. Keep up the good work. Best wishes,  
*David Giles*

The TRACKS magazine seems to improve every month. Many thanks for all the hard work all the officials do to keep the magazine going for the benefit of the enthusiasts *Mike Pinder*

Great mag, brilliant publications, well done. The mag goes from strength to strength, it is the best bargain anyone can get for £16. Your advertisement in RI looks very professional.  
*Martin Proctor*

## Website:

The new re-designed website was launched on the 17<sup>th</sup> May 2014. **Login details are no longer required** to access previous issues of **TRACKS** (Dec 2006 to date) and new pages have been added listing articles appearing in these issues. However the last 12 months issues (on a rolling basis) are available and can be emailed as pdfs to members on request from the editor (see **Magazine** above). Email Trevor Roots at [website@intercityrailwaysociety.org](mailto:website@intercityrailwaysociety.org) if you have any queries or suggestions.

**Flickr Photo Gallery:** [www.flickr.com/photos/intercity-railway-society](http://www.flickr.com/photos/intercity-railway-society).

We have a photo gallery on **Flickr** and all photos submitted for inclusion in **TRACKS** will, time permitting, be added to the gallery. Please send all photos to [editor@intercityrailwaysociety.org](mailto:editor@intercityrailwaysociety.org)

**ICRS Yahoo News Group:** We have our own Yahoo News Group, established in March 2004, open to members and non-members alike to post sightings and observations, share comments and debate the current railway scene. To join visit [finance.groups.yahoo.com/group/intercityrailwaysociety/](http://finance.groups.yahoo.com/group/intercityrailwaysociety/) or email Steve Revill at [intercityrailwaysociety-subscribe@yahoogroups.com](mailto:intercityrailwaysociety-subscribe@yahoogroups.com)

## Publication News:

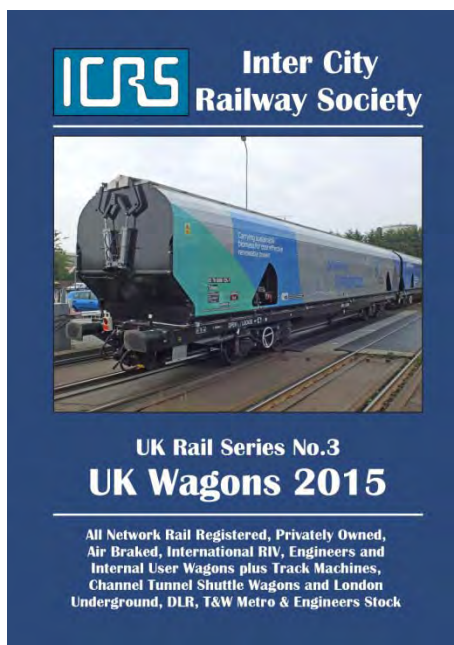
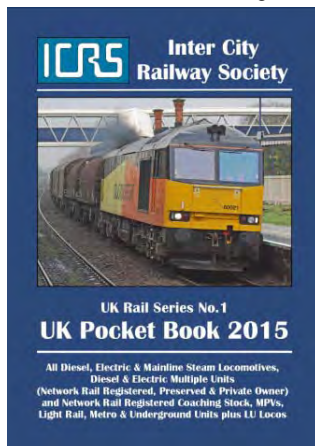
Both **UK Wagons 2015** and **UK Pocket Book 2015** have now been released bringing to four the number of new titles released since the start of the year. **NB Both due out 6<sup>th</sup> March for those reading the early pdf version, keep an eye on the website for exact release date.**

**UK Wagons 2015** has been totally overhauled and updated to include new stock and reflect the numerous scrappings with hundreds of additions and deletions. Because we took time to get the details right book was delayed slightly but the 'updated to' date has been extended and is now the 23<sup>rd</sup> February 2015.

The **UK Pocket Book** is most definitely the best ever with the addition of the steam locos and all the annoying gremlins / typos from the last edition eliminated.

A new innovation to the **UK Combine** and the **UK Pocket Book** is the inclusion of all preserved mainline steam locomotives used or operated by the big four railway companies / constituents and BR, not just the NR registered ones. This means we are the only ones to feature all preserved mainline traction in one book. Hopefully this will be well received, though with the increase in EMUs it has meant more pages in both books...we just can't help growing !!!

Prices are on the rear cover but as with all of the 2015 new editions we have had to increase the price slightly to allow for increased paper, printing and postal costs, though the member price for the **UK Combine** will remain the same....a good buy.



# FORTHCOMING EVENTS

## OPEN DAYS

### **Military Railway Railfest, 9-10<sup>th</sup> May 2015 ?:**

Due to the plan to build 6000 homes on Long Marston and the build-up of ex London Underground stock for DMU conversion, the planned Military Museum has been scuppered. The Military Railfest is now rumoured to be a much scaled down affair possibly held at the Nene Valley Railway. Due to the tight deadline for arranging an event it may not now happen at all as no mention is made on the NVR website. It may just be a private event for military personnel with no railway hardware at all Watch this space.

### **DRS Carlisle Kingmoor Open Day, 18<sup>th</sup> July 2015:**

With DRS celebrating its 20<sup>th</sup> anniversary the gates the Depot will be open from 10.00 – 16.00. Tickets are now on sale through the DRS website <http://www.directrailservices.com> though I believe you can buy them on the gate. We will be there with our sales stand.

## MEMBER ONLY VISITS

**AGM & Eastleigh Works, 21<sup>st</sup> March 2015:** For details see above.

### **DRS Crewe Gresty Bridge, 12.30 - 13.30, 2nd May 2015:**

We have secured another visit around Gresty Bridge for existing members only, however as before, it is limited to just 25 places. With more members than this limit expected to apply, the only fair way is to allocate places by a lottery. Can all members please either email or write to Lou Watson (Events Co-ordinator) asap but at the latest by the 31st March. Written applications must be accompanied by a stamped addressed envelope. The cost will be £5 payable on the day **SO PLEASE DO NOT SEND MONEY** with your application. Anyone wishing to come as a pair will be treated as one for the draw. I am sure you will appreciate this is the only way to proceed when so many members do not have email and would be last in a first come first served system. The 'chosen' ones will be notified as soon after 31<sup>st</sup> March as possible. In case anyone pulls out, a short reserve list will be drawn as well.

### **Eastleigh Works, 6<sup>th</sup> June 2015:**

Our annual unlimited bash with hog roast. Further details nearer the time.

**Eastleigh Works, 25<sup>th</sup> July 2015:** Guided tour. Further details nearer the time.

**Eastleigh Works, 12<sup>th</sup> September 2015:** Guided tour. Further details nearer the time.

## PRESERVATION GALAS

### **Swanage Diesel Gala, 7-10<sup>th</sup> May 2015:**

Confirmed details nearer the time but we will be there with our sales stand for the four days. It looks like the preview day on the 7<sup>th</sup> will be entitled 'Go West' with 45060 and 50035 combining with resident locos to recreate scenes from the past on the Western Region. A GBRf Cl.66 will also be named 'Swanage Railway' on the day. Other visiting locos for the Gala appear to be 20118, 20132, D5185, 37057 and 56006. There will be the opportunity to travel on the new 3 mile extension north of Norden to Worgret Jct.

# EASTLEIGH WORKS REPORT

by **Carl Watson**

for the period up to 28<sup>th</sup> February 2015

**Locos:** 31233 visited with a Test Train on the 2<sup>nd</sup> (31233, 977986, 977985, 62384, 9708). Three 66s from three companies have been through the Paintshop during the month, 66706 for GBRf emerging on the 5<sup>th</sup>, 66421 for DRS on 23<sup>rd</sup> and 66414 (the second ex-DRS loco to be so treated) for Freightliner on the 27<sup>th</sup>.

66414 in FL Powerhaul livery



66421 in revised DRS livery



66706



47739



37604 visited with a Test Train on the 20<sup>th</sup> (37604, 6264, 999606, 9703).

57011 has received overhauled bogies and is expected to leave in early March.

47739 received a bogie swap and was ready for release on the 5<sup>th</sup> (see photo above right).

08721 arrived from Edge Hill for repairs on the 11<sup>th</sup>, the Allely's lorry collecting 08790 and delivering that to Oxley (see photo opposite top).



08790 & 08721



37608 collected an assortment of DRS vehicles for return to service on the 16<sup>th</sup>. In the convoy were repaired 57010, KUA 95771, PFAs 92777 and 92798 and Escort Coaches 9419 and 9428 (see photo below).

37608 + 57010 + stock



59003 was moved into the Paintshop on the 20<sup>th</sup> to be prepared for repainting (see photo left).

70802 was used for RILA surveying work on 23<sup>rd</sup> (see photo opposite top).

57008 departed on the 23<sup>rd</sup> with 57301 and 66421.

66720 arrived for repairs on the 24<sup>th</sup>.

66711 arrived on the 25<sup>th</sup> for repainting (see photo opposite middle).



#### Units:

Siemens have attended to: 450090, 081, and 091 with 024 and 019 on site at the end of the month. 37706 collected the repaired Class 108 DMUs 54504 + 51933 and returned it to the Swanage Railway on the 4<sup>th</sup> (see photo below).



It returned later that afternoon (see photo opposite top) with Class 117 DMUs 59492 + 51356 + 51392. 51356 is a replacement for 51346 which has too much corrosion in the bodywork. The others are for component recovery to support the overhaul of 51356, 51388, 55028 and 59486 for Project Wareham



37706 + 59492 + 51356 + 51392



59492



51392



51356



73107 collected GLVs 68505 and 68501 on the 17<sup>th</sup> for winter duties based out of Tonbridge.

**Wagons:** IGA wagons repaired have been 33 80 4647 023-7, 4647 003-9,

The first two IFA conversions for STVA with the red frames added departed for trials on the 17<sup>th</sup>, 33 87 4908 604-1, 4908 632-2. These were followed on the 24<sup>th</sup> by 612-4 and 625-6 (see **FREIGHT MATTERS**).

IGAs 33 80 4647 009-6 and 022-9 arrived for repairs on the 17<sup>th</sup> along with TEAs 89019 (see photo below right) and 89020 for repainting.

IVA 23 80 2398 632-2 also arrived on the 24<sup>th</sup> for repairs (see photo below left).



17 IHA Steel Carriers arrived for repairs on the 24<sup>th</sup>, 37 84 4667 081-2, 034-1, 001-0, 040-8, 028-3, 069-7, 057-2, 083-8, 015-0, 033-3, 032-5, 058-0, 065-5, 062-2, 036-6, 072-1 (see photo below) and 025-9.



IHA 37 84 4667 072-1

**Coaches:** 57008 arrived on the 23<sup>rd</sup> with four Mk2 coaches for repainting for DRS: 5945, 5965, 5976 and 6183. The latter three were repainted here in 2008/09 into their current Arriva Trains Wales livery (see 6183 in **RAILTOUR PHOTO SPOT** the second coach behind 66086). 5945 is in Virgin livery.

**OTP:** MPV DR 98914/98964 has followed the 'pink one' and been vinyled in an orange wrap around each cab. It was named 'Dick Preston' in a surprise ceremony on the 27<sup>th</sup> (see **FREIGHT MATTERS**).

photos by Carl Watson



# RAIL TOUR PHOTO SPOT

Pathfinder Tours ran a charter between 13-16<sup>th</sup> February 2015 from Carmarthen - Edinburgh for Welsh rugby supporters for the Wales v Scotland Six Nations Championship match. Traction was, 68005 1Z68 Carmarthen - Carlisle, then 68002 Carlisle – Edinburgh on Friday 13<sup>th</sup>. The stock was ten Mk2 coaches plus one Mk1 generator coach in an eclectic mix of liveries: 6310 (Riviera Trains chocolate & cream), 6183, 6137 (ATW), 5998. 5964, 6042 (Anglia), 1212, 3344, 3325, 3333 (Virgin), 3390 'Constable' (Great Britain blue & cream). The stock was then used to cover rare track on Sunday 15<sup>th</sup> as The Great North of Scotland Reviver. with 66086 t&t 66232 Edinburgh – Elgin and return. The return supporters train used 68002 and 68005 as on the outward leg.



above 68005 passing through Craven Arms, 11.11 12<sup>th</sup> February (Leslie Steenton)  
below 66086 t&t 66232 approaching Keith on the loop line, 14.30 15<sup>th</sup> February 2014



# TRAFFIC & TRACTION NEWS

## January 29

37608 t&t 37605 on a Longsight – Derby RTC test train was seen approaching Walsall at 13.38 with what appears to be snow on the cab front (photo below by David Williams).



66616 was seen passing through Walsall at 13.21 with Rugeley PS – Barrow Hill coal (photo below by David Williams).

## February 2

60054 was seen at Gobowen on 6V75 Dee Marsh - Margam steel empties at 10.30 (photo below by Martin Evans).



68008 was seen entering Bescot Yard at 14.13 with a Crewe Basford Hall – Toton North Yard engineers train.

68014 passed southbound through Bescot light engine at 13.41 (photo below by David Williams).

## February 3

66020 passed Rushden at 11.21 on 6H10 Bletchley - Peak Forest (photo below by Colin Pottle).



66152 was seen stabled at a snowy Didcot at 11.34 (photo opposite top by David Giles).



## February 5

59002 was seen at Eastleigh on 06.05 7035 Westbury Yard - Fareham stone at 07.55.

## February 6

55022 masquerading as 55003 'Meld' was seen passing through Springburn Station on 5D15 10.30 Glasgow Works to Shields Road at 11.42 (see **LIVERIES**).

66094 + 60062 passed through Walsall at 14.40 with Wolverhampton – Masborough steel wagons.



68005 passed through Walsall at 14.45 with a Crewe Basford Hall – Toton North Yard engineers train.

### February 7

66414 + 66566 were seen passing through Newport on a light engine move from Wentloog - Stoke Gifford at 11.10, having earlier worked in t&t formation on the late running 4V50 Southampton Maritime - Wentloog (photo below by Andrew Buckley).



60063 passed through Newport at 11.35 working 6H25 Margam - Llanwern loaded steel coils (photo below by Andrew Buckley).



56103 looking in need of some attention to its bodywork was seen stabled in Taff Sidings at the west end of Cardiff Central station at 13.30 (photo below by Andrew Buckley).



20308 t&t 20309 were at Paddington on the Buffer Puffer tour around London.

60054 was seen approaching Severn Tunnel Junction at 10.18 on 6B13 Robeston – Westerleigh tanks.

60085 working 6V62 Tilbury Riverside - Llanwern Exchange sidings passed Swindon at 15.12 some 62 minutes early (photo below by Andrew Buckley).



15312 freshly outshopped in the new Arriva livery was seen at Cardiff Central at 13.06 working 2V26 Coryton - Radyr shuttle (photo below by Andrew Buckley).



66763 was seen stabled at Eastleigh at 14.15 (see **NEW STOCK**).

### February 9

60019 passed through Gobowen on empty steel working bound for south Wales at 10.20 (photo below by Martin Evans).



66758 passed through Walsall at 14.01 with Tinsley Yard – Coton Hill working.

66731 passed through Walsall with Cliffe Hill – Bescot engineers train at 13.47 (photo below by David Williams).



### February 10

66701 passed Isham at 12.34 on 6M32 Neasden - Bardon Hill (see photo at end by Colin Pottle).

37409 passed Isham at 12.21 on a Derby RTC - Hither Green test train (photo below by Colin Pottle).



66527 was seen at Eastleigh on 13.28 6V27 Eastleigh Yard - Hinksey Yard Departmental Train at 12.45 (photo below by Norman Smith).



MPVs DR98003 + DR98013 passed northbound through Stafford for Crewe at 10.45 (photo below by Martin Evans).



66174 was seen waiting the road at Crewe at 15.05 with 2 bogie hoppers presumably bound for Marcroft Engineering (photo below by Martin Evans).



Rail Grinder DR79262 + DR79261 passed through Stafford on the up fast line at 10.45 on a Crewe - Crewe working which was travelling as far as Nuneaton.

66164 passed through Stafford with a Trafford Park - Southampton liner at 11.15.

66425 worked a Coatbridge - Daventry liner through Stafford at 11.20.

66749 powered through Stafford with an Ironbridge - Tuebrook working on at 14.10.

92029 + 67034 + 67018 passed through Stafford with a Crewe - Wembley light engine movement at 15.05 (photo below by Martin Evans).



70020 was seen passing Daventry Railfreight Terminal at 12.45 on the diverted Garston - Southampton intermodal due to the Landslip at Harbury (see **INFRASTRUCTURE NEWS**).

### February 11

B1 4-6-0 61306 'Mayflower' t&t 47580 was seen passing through Stratford at 11.31 (photos below by Derek Everson).







and then at Ingatestone at 11.43 (photos below by Colin James).



66504 passed through Nuneaton at 14.20 with a Millbrook - Lawley Street liner (photo below top by Mike Rumens).



Tonbridge West Yard was full of locos at 13.15, 20901, 73128, 73136, 66710, 66715, 66759 & 66763 (photo at end by Paul Sumpter).

## February 12

37423 + 68001 was seen passing through Derby at 13.26 (photo below by Graham Stockton and see **NEW STOCK**).



D400 was hauled by 50007 through Bristol Temple Meads at on its way to Washwood Heath from Yeovil Jct as 0Z51 (photo below by Michael Hayman).



## February 13

387121 was seen at East Croydon at 12.06 with 1W23 Bedford - Brighton (photo below by David Doulton).



Carlisle was the place to be for Cl.68s with 68004 + 68009 on DRS Kingmoor - Gresty Bridge light engine move at 07.40, 68003 on Daventry - Mossend at 10.56 and 68005 replaced by 68002 on 1Z68 Carmarthen - Edinburgh between 14.23 and 14.47.

## February 14

68008 + 68009 were seen passing northbound light engine through Crewe at 09.59 (photo below by Neil Dix).



97303 was seen passing northbound light engine through Crewe at 10.18 (photo below by Neil Dix).



60015 was seen passing through Nuneaton on 6M35 Humber - Kingsbury tanks at 11.03, with 34 bogie tanks this was possibly the longest tank train seen in Nuneaton (photo below by Mike Rumens).



67008 was seen passing southbound light engine through Crewe at 11.05 (photo below by Neil Dix).



37402 + 37608 were seen passing northbound light engine through Crewe at 15.35 (photo below by Neil Dix).



A dirty 66120 passed through Nuneaton at 11.20 on 6B09 Toton - Tamworth ballast (photo below by Mike Rumens).



Collett Hall 4-6-0 4965 'Rood Ashton Hall' was seen arriving at Oxford at 15.22 working 1Z36 Valentine's Express from Tyseley Steam Trust (photo below by Andrew Buckley).



61306 was seen arriving at Eastleigh at 13.04 on 08.57 1Z82 London Victoria - Eastleigh "The Cathedrals Express" (photo below by Norman Smith). It was later seen passing Winchester at 13.16 (see front cover) and then taking on water at Basingstoke at 13.42





66114 was seen passing through Nuneaton on 4M25 Mossend - Daventry intermodal at 12.41.

### February 15

The Sunday afternoon rush hour at Northenden Junction often sees two freights pass within a few minutes of each other, the 13.54 Tunstead - Westbury Lafarge hauled by 66617 and the 14.06 Tunstead - Lostock Works hauled by 60079 (photos below by John Squire).



66086 t&t 66232 were seen approaching Keith on the loop line at 14.30 on 1Z70 Edinburgh - Elgin, a Pathfinder tour of freight lines (see **RAILTOUR PHOTO SPOT**).

66023 was seen working 633U Ingatestone - Whitemoor at Manea 11.14 (photo below by Steve Wells).



66740 was seen at Manea on 652V Manningtree - Whitemoor at 11.39 (photo below by Steve Wells).



### February 17

92010 passed through Nuneaton at 14.23 on a Crewe - Mossend light engine move (photo below by Mike Rumens).



66175 Mountsorrel - Kennett Redland sidings passes Whittlesey at 12.05

66764 passed Whittlesey at 11.53 on 6E84 Middleton Towers - Monk Bretton (see photo at end by Colin Pottle).

66769 6M60 Whitemoor - Mountsorrel passed Whittlesey at 11.39 (see **NEW STOCK**).

66515 was seen passing Aldridge on the Sutton Park Line on 6Z79 Bardon Hill - Willesden Ballast at 15.43.

60011 was seen passing Aldridge on the Sutton Park Line at 15.53 on 6E08 Wolverhampton - Immingham empty steel (see photo at end by Ken Bull).

Passing through Penrith in quick succession were 92010 on a Rugby - Mossend light loco move at 17.12 followed five minutes later by 57304 on Preston - Carlisle DRS light loco move

### February 18

68001 was seen passing through Bescot at 14.44 on 6Z97 Crewe - Bescot - Toton departmental then Aldridge on the Sutton Park Line at 15.56 (see **NEW STOCK**).

66515 was seen passing through Walsall at 13.41 on Cliffe Hill - Bescot engineers train.

66728 was seen passing Harrowden Junction at 12.36 on Peterborough Maintenance Shed – Wellingborough (photo below by Colin Pottle).



66623 was seen approaching Wellingborough at 10.53 on Hope - Theale loaded cement tanks (photo below by Colin Pottle).



### February 19

67007 was unusual traction for the 09.47 Fenny Compton MOD - Marchwood MOD seen passing through Eastleigh at 10.15 (photo below by David Doulton).



### February 20

70003 passed through Walsall at 13.29 on Rugeley PS – Stoke Gifford coal.  
66081 and 66426 were seen in Toton Yard at 10.04 (photo top of column right by Neil Dix).



### February 22

66716 t&t 66720 passed through Eastleigh on the 09.25 6G20 Beechgrove - Eastleigh Yard RailVac Train (photos below and in **LIVERIES** by Norman Smith).



### February 23

66763 passed through Walsall at 13.40 on Cliffe Hill – Bescot engineers train.  
68013 was seen passing through Walsall at 14.47 on 0Z97 Crewe – Bescot - Toton Departmental then through Aldridge, on the Sutton Park Line, at 15.57 (photo below by Ken Bull at the latter location).



66517 seen passing Washwood Heath at 14.27 on a Felixstowe - Lawley Street liner (photo at end by Roger Thomas).



08762 was seen shunting the RMC sidings at Washwood Heath at 10.54 (photo below by Roger Thomas).



#### February 24

68009 was seen passing Sytch Lane at 09.13 on a Crewe Basford Hall - Mountsorrel working (photo below by Roger Thomas).



37608 + 37612 + 37606 were seen in Carlisle station on a light engine move to Sellafeld at 16.10 (photo below by Gordon Kirkby).



68013 was seen passing Sytch Lane at 13.06 on a Crewe - Toton working (photo at end by Roger Thomas).

66723 passed through Carlisle at 16.58 on a Hunterston - Drax coal train followed 15 mins later by 66765 with a special Doncaster - Hunterston train of empty coal hoppers, a rare occurrence for GBRf Cl.66s.

#### February 25

975025 'Caroline' + 37419 + was seen approaching Ruabon at 13.10. It had originated at Cardiff Canton and travelled to Holyhead then returned to Crewe (photo below by Martin Evans).



60021 was seen in Acton Yard at 17.42 (photo below by Michael Hayman).



#### February 28

73141 + GLVs 68501 + 68505 was seen passing Shawford on 5N05 Tonbridge - Eastleigh Works.

66769 was seen passing Shawford at 15.13 on 7Z05 Hoo - Eastleigh crane move (photo overleaf top by Ian Knight).



47727 was seen passing Redbridge at 17.47 on 6C51 Eastleigh - Liskeard RailVac (photo below by Ian Knight).



66747 was seen passing through Heald Green at 11.16 on 4M21 03.15 Felixstowe - Trafford Park liner (photo below by John Squire).



A busy scene was witnessed at Tonbridge West Yard by two members who probably didn't realise they were both sending me photos !! Locos present were 20901 + 20905, 73136 + 73128, 66754 t&t 66719 (see photos top of column right by Andrew Buckley), 66715 t&t 66744 (see photo at end by Andrew Buckley),

73107, 73201, 73212, 73961 + 73962 (see **NEW STOCK**).



B1 4-6-0 61306 *'Mayflower'* was seen taking water at Gloucester at 12.00 whilst working 1Z61 St David's Day Cathedrals Express from London Paddington – Cardiff Central (photo below by Len Turner).



66065 Acton Bridge, 20<sup>th</sup> February 2015 (Colin Pottle)





with the M6 in the background  
66517 passes Washwood Heath,  
23<sup>rd</sup> February 2015 (Roger Thomas)



above 68013 being overtaken by a VVC Voyage, Sytch Lane, 24<sup>th</sup> February 2015 (Roger Thomas)



66701 Isham, 10<sup>th</sup> February 2015 (Colin Pottle)





60011 Aldridge, 17<sup>th</sup> February 2015 (Ken Bull)



66715 & 66744 with de-icing wagons,  
Tonbridge West Yard,  
28<sup>th</sup> February 2015 (Andrew Buckley)



66764 Whittlesey 17<sup>th</sup> February 2015 (Colin Pottle)





above 20901, 66715 T7T 66759 and 66715, Tonbridge West Yard, 11<sup>th</sup> February 2015 (Paul Sumpter)



66185 Watford nr Long Buckby, 1<sup>st</sup> March 2015 (Colin Pottle)



66305 Watford nr Long Buckby, 1<sup>st</sup> March 2015 (Colin Pottle)

## FRANCHISE NEWS

Electric Traction Limited (ETL) is to hire a number of heritage AC electric locomotives to GBRF which will be used to move trains to and from London's Euston station on behalf of Serco Caledonian Sleeper Limited. The locomotives are 86101, 86401 and 87002 With CI.92s and heritage AC electrics being turned out in the new Caledonian Sleeper livery, Serco, the operator has signed the deal to build 75 new carriages by Construcciones y Auxiliar de Ferrocarriles (CAF) in Spain. They are due to arrive in 2017.

The 1<sup>st</sup> March saw the start of the new Virgin Trains East Coast (VTEC) franchise replacing East Coast. CI.91s, DVTs and HST CI.43s are having an interim red flash applied with Virgin branding but 91124 a set of Mk4s and DVT 82219 has been totally re-liveried (see **LIVERIES**)....*I like it, ed.*

# OUT & ABOUT

by James Holloway

*For clarity, steam locos are now shown in red. To be more helpful for those interested in where stock was exactly, can I ask all contributors who list trip sightings over long distances, to please add all locations when submitting to James. Please also ensure your sightings reach James a few days before the press deadline, see **SOCIETY NOTICE BOARD**...ed*

## **John Brace:**

### **2<sup>nd</sup> February:**

**Crawley:** 377117/139/421/449

### **Three Bridges:**

377107/115/144/157/158/214/437/462/504/508

377510/513/515

**Gatwick:** 319460, 377413/459, 442410/12

**Norwood Junction:** 377616, 378205

**Blackfriars:** 465179, 466015

### **West Hampstead Thameslink:**

43044/046/048/052/058-061/064/073/082/089

66134/194/604, 222001-004/007-009/011-013/015

222017/018/020/102/103, 319001-003/005/007

319009/010/214/216-220/367/369-373/375-377

377383/385/421/422/424/425/427/429/430/432

319434/435/441/442/446/447/449/451-453/456

377459, 377207/211-213/502/505/506/509/512

377514/516/517-519/523, 387106-09/12-14/18

**St Pancras:** 37 3011/211/214/215

### **King's Cross:**

43277/305/312/314/315/319, 67016, 91104/13/19

91132, 180101, 365502/04/09/10/17/22/36/40

### **Victoria:**

375709, 377109/140/469/609, 442402/08/09/16

455802/821/822/831, 465192/926, 466007/26

### **Clapham Junction:**

158886, 159001/003/008/017/102/104, 377108

377120/124/133/141/146/153/155/310/319/328

377403/410/412/426/438/448/454/455/461/467

377604/611/618/625, 378208/212/227/229/231

442407/11/14, 444001/04/05/08/24-26/30/32/37/39

444045, 450001/014/029/032/033/039/071/085

450086/094/100/106/111/121/122/124/126/127

450544/546/549/557/562, 455704/706/709/711

455712/718/720/721/723/730/734/735/742/801

455808/813/815/826/827/836/846-849/853/855

455858/859/863/865-867/869/870/872/873

455902-904/907-909/911/914/915/918, 456014

458014/021/023/504/531-534

## **Peter Cole:**

### **12<sup>th</sup> February:**

#### **Cardiff Central 08.30-17.30:**

60019/39, 66005/019/040/100/115/135/187/197

66198/200, 67029, 142002/06/10/69/72-77/81-83

142085, 143601/02/04/05/07/08/10/16/22-25

150101/106/124/208/213/217/227/229-231/235

150236/241/244/248/250/251/253-255/259/260

150278/280-284, 153302/05/12/20, 158798/821

158822/826/834/951/953/955-958, 170106/636

170638, 175001-004/007/008/011/101/104/105

175109/110/112/113/115/116

### **16<sup>th</sup> February:**

#### **Llanelli 15.30-19.35:**

60019, 68005, 150235/264/267, 153312, 158821

175005/010/107/108/112

## **David Giles:**

### **17<sup>th</sup> February:**

#### **Bristol Parkway 09.00-09.30:**

43132, 66177, 150122/124/265, 220024

#### **Didcot Parkway 10.15-12.00:**

37218/609, 43015/020/036/040/098/130/147/149

43158/171/190/196, 66027/561/955, 67005

165102/110/121, 166203/07, DR 73931

cs 6262/99666/977868/999605

#### **Reading 12.30-14.45:**

43002/004/015/020/025/026/029/035/035/041/063

43069/078/079/086/093/094/125/129/131/133/137

43139/142/148/149/158/159/164/170-172/174/175

43177/179/180/192/193/195/196, 59101/202/203

66134/193/566/569, 70015, 150001/002, 165102

165104/108/109/112/116/122/124/125/135

166212/221, 180103/06, 220006/13, 221122

458006/07/14, 450072/563

## **Michael Hayman:**

### **6<sup>th</sup> February:**

**Paddington:** 57305/312

### **7<sup>th</sup> February:**

**Paddington:** 20308/309

**Clapham Junction:** 66710

### **13<sup>th</sup> February:**

#### **Paddington:**

43002/015/022/088/093/129/133/174/194

**Acton:** 59201, 66719

**Swindon:** 43002/021/025/033/172, 66002/058/065

#### **Bristol Temple Meads:**

43003/138/163/183, 50050

#### **Bristol Parkway:**

43018/172/174/180, 60001, 70010/011

**Didcot:** 66111/194

### **14<sup>th</sup> February:**

#### **King's Cross:**

**34067 'Tangmere',** 43465/468, 57313, 67005/22/26  
91110/29

**Victoria:** **61306 'Mayflower',** 47580

### **25<sup>th</sup> February:**

#### **Acton:**

37667, 59203, 60021, 66001/019/070/147/517/573

**Old Oak Common:** 57603

## **Mike Rumens:**

### **19<sup>th</sup> January:**

**Nuneaton 13.25-14.55:**

66534, 67005/26, 70801, 90019/45/47, 92039  
153365, 170107/113/115/116/638, 221109  
350101/117/372/375, 387115/16/19, 390045/046  
390112/114/115/117/119/123/128/130/134/135  
390137/151/157, cs 2915-17/21-23

**21<sup>st</sup> January:****Nuneaton 13.40-14.40:**

66188/207/501/755, 70810, 92024/39, 153334  
170106/109/518, 221117, 350103/370, 390002  
390006/043/045/103/114/115

**22<sup>nd</sup> January:****Nuneaton 14.02-14.58:**

66148, 70810, 90047, 153356, 170101/519/522  
170636, 221108, 350368, 387120/21, 390005/008  
390020/040/124, DR 73947

**26<sup>th</sup> January:****Nuneaton 14.05-14.45:**

66148, 70803, 90045/48, 92039, 153364, 170116  
170397/639, 221103, 350374, 390039/049/127  
390136/137

**27<sup>th</sup> January:****Nuneaton 13.24-14.55:**

66005/588, 90041/48, 92039, 153375, 170102/113  
170115/636/637, 221108/14/43, 350105/106/263  
350370, 390005/011/013/046/107/117/119/122  
390123/129/132/134/151/157

**28<sup>th</sup> January:****Nuneaton 14.08-14.40:**

70806/808, 153364, 170104/397, 350369, 390014  
390156, DR 77002

**2<sup>nd</sup> February:****Nuneaton 14.05-15.00:**

66592, 86628, 90041, 153375, 170110/113/115  
170397, 350368/369, 390049/103/130/152

**3<sup>rd</sup> February:****Nuneaton 13.42-15.05:**

66145/533/539/728/955, 67008, 90016/41/48  
92019, 153375, 170101/105/112/114/522, 221143  
350101/115/369/373, 390010/039/042/044/049/122  
390123/125/148/152/155, DR 73948

**4<sup>th</sup> February:****Nuneaton 13.47-14.45:**

66006/051/199/533/540/596, 90019/20, 153375  
170114/397/521/639, 221113, 350122/369  
390001/045-047/125/128/129/135/136/154

**9<sup>th</sup> February:****Nuneaton 13.50-15.10:**

66110/503/594/711/751, 90048, 92041, 153371  
170109/110/117/398/523/637, 221107/15/16/43  
350101/115/368/374, 390002/016/044-046/050  
390117/122/125/134/138/148/153, DR 77905

**11<sup>th</sup> February:****Nuneaton 13.45-14.40:**

66007/131/504/711, 92041, 153375, 170107/520  
170637, 221104, 350106, 390002/007/123/130  
390137/138/148, DR 73948

**12<sup>th</sup> February:****Nuneaton 09.00-10.00:**

66572/955, 90043, 153365, 170107/109/397/398  
221108/09/13/16, 350115/255, 390008/039/114  
390121/123/128

**Atherstone:** 68005

**Rugeley:** 170511

**Norton Bridge:** 66425

**Crewe 11.20-11.30/16.15-16.50:**

56113, 153362, 175007/108/113, 221110/42  
323225, 350121/238/250, 390005/104/114/117  
390122/136/152/153

**Wilmslow:** 175114

**Longsight:** 08451

**Manchester Piccadilly 12.15-12.25/14.40-15.30:**

142011/49/57, 150138/148/150/214/215/225/270  
150273/275, 156446/462, 158826, 170301/303  
175110/114/116, 185104/13/15/16/18/21/23/35/42  
220005, 323225/28/32/37/38, 350402/404, 390006  
390009/117/119/151

**Cornbrook:** 66101, 156421/480/482, 185118/41

**Manchester Victoria:** 150133, 158863/866

**Stafford 17.10-17.55:**

66423/517/596, 70004, 86610/612, 221117/23/40  
350233/238/240/263/376, 390008/118/134/137

**13<sup>th</sup> February:****Nuneaton 14.10-14.45:**

66081, 90049, 153365, 170116/522/636, 221101  
350123/376, 387122/23, 390006/020/042/045/129  
390154, DR 80208

**14<sup>th</sup> February:****Nuneaton 10.00-13.00/14.00-15.00:**

56105, 57302/309, 60015, 66006/047/114/120/136  
66250/422/423/428/752/954/955, 68008/09, 70009  
153375, 170104/106/107/109/397/398/520/636  
170638, 220006, 221101-04/09/10/18/26/29/34/36  
221141/43, 350111/130/241/254/370/375, 390001  
390005/006/010/011/020/039/042/043/045/046  
390050/104/107/112/117/118/121/123/124/127  
390130/132/134/137/148/152/155

**Brian Derricote:****4<sup>th</sup> February:****Sandwell & Dudley-Derby 08.15-09.30:**

08899/943, 56103, 66020/059/501, 153311/81/84  
158813/846, 220018/33, 222001/007

**Doncaster 11.30-15.00:**

D4157/08934, 43272/295/311/314/315, 66092/110  
66154/172/206/423/433/516/542/621/705/707/716  
66743/757/766/768/769/771/772, 67024, 70009  
91110/11/24/28, 142019/20/95, 144005/13/16  
153313/24/79, 158787/792/855, 170304, 318254

**Geoff Hope:****6<sup>th</sup> January:****Stafford 08.40-14.35:**

37668/706, 66035/090/150/425/517/527/542/570  
66708/713/749/753, 68005, 70006/013, 90016/43  
90048, 92005/44, 220004/05/08/11/13/16/20/25/29  
220031/33, 221102/04-06/09-11/13/14/17/19/24/25  
221129/31/39/42/43, 325002/14/15, 350105/108  
350110/111/115/117/119/123/127/235/255-257  
350265/370/375/376, 390005/006/009/010/013  
390016/020/039/040/043-046/049/050/103/104  
390112/114/115/119/122-127/129/130/132/135  
390137/154, cs 96175+5222+9104+5237+5236+  
99350+351+99371+5216



**15<sup>th</sup> January:**

**Southport-Sandhills 09.28-10.06:**

507012/16/20, 508114/20

**Sandhills 10.06-11.11:**

507001/05/08/11/17/24/25/30, 508108/27/28/30/31  
508134

**Kirkdale Depot 11.14-11.23:**

507014/23/27/31

**Birkenhead North 11.47-12.47:**

507013/18/28/32/33, 508111/15/38/41

**Birkenhead Depot:** 507010, 508117/22

**New Brighton 12.47-12.58:** 507015

**Birkenhead Central:** 508139

**Rock Ferry 13.40-14.40:**

507019, 508103/10/23-26/37/40

**Sandhills-Southport 16.01-16.40:**

507011

**23<sup>rd</sup> January:**

**Southport-Sandhills 09.28-10.06:**

507005/07, 508128/43

**Sandhills 10.06-11.11:**

507001/06/10/11/15/23/25/28/31/32, 508112/14/17  
508123/26

**Kirkdale Depot 11.14-11.23:**

507002/14/16/27, 508130

**Birkenhead North 11.47-12.47:**

507003/04/08/12/26/33, 508103/17/36/37

**Birkenhead Depot:** 507031

**Birkenhead Central:** 507021

**Rock Ferry 13.40-14.40:**

507013/17/18/30, 508104/10/27/38/40

**30<sup>th</sup> January:**

**Southport-Sandhills 09.28-10.06:**

507006/15/30/32, 508131

**Sandhills 10.06-10.56:**

507009/11/12/16/20/28, 508122/24/25/34/36

**Kirkdale Depot 10.59-11.07:**

507029/31, 508126/28/41

**Birkenhead North 13.04-13.49:**

507002/08/21/27, 508110/11/30/37-39

**Birkenhead North Depot:**

507029/33, 508128

**Rock Ferry 14.13-14.59:**

507013/14/23/25, 508115/20/23/40

**3<sup>rd</sup> February:**

**B'ham New Street 10.50-13.05/15.45-17.00:**

43207/304/378/384, 150107, 153334/64/65

158821/823/827/831/832/834/835/838-840

170102/104/106/108/110/112/113/115-117/501

170502/506-508/510-512/515/516/520/521/523

170630/632/635/637/638, 220001/03/07/08/11/16

220022-24/27/31/33/34, 221104/05/11/17-19/29/36

221137/39, 323201-03/05/07/08/10-22/41-43

350101/105-107/115/116/122/123/231/233/234

350239/244/254/256/262, 390016/040/045/103

390107/114/117/121/130/137/153/155

**Birmingham Moor Street 13.15-15.30:**

67020, 153364, 165012, 168214/216/217, 170630

172211-215/217-219/221/331-334/337-344

**Doncaster 13.15-15.30:**

08724, 43206/208/239/274/277/290/300/302/305

43308/311/311-313/317-320/367/423/465/467/468

60021/87, 66092/147/569/589/750/758, 67024

91102/04-08/10/12/13/15/16/18/21/22/25, 142019

142029/87/93/95, 144002/08, 153385, 158797/842

158845/853/860/861/902/904, 170301/04/06/08

180105/09-12/14, 185111/36/43/49, 220003/04/18

220028-31, 221135, 222010, 318254, 321901/902

322485, DVT's 82203-05/07/08/10/12/15-17/19/20

82227/28/30, ADB966576/577/6098/6099

**12<sup>th</sup> February:**

**Leicester 09.55-14.30:**

43043/045/046/049/050/052/058-060/073/076/089

66025/134/232, 68005, 70001, 156401/405/411

158783, 170103/107/109/114/397/398/518/521

170639, 222001/002/004-007/009/012-016

222020-023/102/103, DR 77905

**Leicester Depot:** 56031/038/065/069/106

**19<sup>th</sup> February:**

**Crews 08.30-09.00:**

67012, 92033, 153323/57, 221110/14/42, 350107

350246/254, 390118/130

**B'ham New Street 10.05-12.20/14.55-17.30:**

43285/304/357/366/378/384, 150107, 153334/56

153366/71/75, 158823/824/827-830/834/835

158838-840, 170101/103/105/107-114/117/397

170398/501-503/508-512/514-523/631/633/634

170636-638, 220003-05/09/10/12/14/17/20/22-25

220028/31-34, 221105/08/09/13/19/21/27-29/31/32

221136/43, 323201/02/05-21/41-43, 350101/105

350108/112-114/119/120/130/242/249/252/261

350263/264, 390001/006/013/016/042/043/104

390107/122/123/126/128/136/151/152

**Stourbridge Junction 13.00-13.20:**

67008, 68014, 139001/2, 165012

**Birmingham Moor Street 13.50-14.55:**

68011, 153356, 168109/214/217/219, 170631

172211/212/221/332-335/337/339-341/344/345

**26<sup>th</sup> February:**

**Leicester 09.55-13.25:**

43043-045/048-050/054/055/060/073/076/082

66092/154, 68002, 156401/404, 158770/854

170103/104/107/112/397/519/636, 222001/002

222004/006-008/010-012/015-017/019-021/103

222104, DR 73111

**Leicester Depot:** 56301

**Mike Waudby:**

**14<sup>th</sup> February:**

**Beverley 06.30:** 158843

**Hull Paragon 06.45-06.50/1923.-20.30:**

43314/315/367, 142016, 144010, 158787/792/794

158850/855/902/904, 170305/308/309, 180103/09

185146/49

**Selby 07.23:** 66707

**Doncaster 07.42-11.42/13.48-18.20:**

37219/602/667, 43013/014/206/208/238/239/251

43257/295/296/299/300/302/305/308/310/311-313

43317/319/367/423/465/467/468/480/484, 57314

57315, 60020/021/054/062/074/076/087, 66002

66024/031/066/075/121/137/168/170/192/433/510

66569/599/601/707/714/727/737/956, 67005/16/24

67026, 91101/04/06/07/10/12-18/21/24/25/27-31

142016/27/67/89/92/93, 144002/04/10/11, 153321

153383, 156415, 158787/792/816/843/859/861  
 158902/904/909, 170301/303/304/306, 180105/07  
 180109/11-13, 185107/23/26/31/42, 220002/11  
 222021, 321901, 322482/4, 34067 Tangmere  
**Sheffield 12.10-13.03:**

43049/050, 142038/89/92/93, 144001/11/23  
 158780/797/815/903/909, 220002, 221125  
 222001/018

**Rotherham Central 13.20:** 158859

**Doncaster Roberts Road 13.45:**

66739/766/768/770

**Thorne North:** 158794

**Goole 18.40:** 144018

**Brough 19.00-19.10:** 158815/908, 185141

**Colin James:**

**12<sup>th</sup> February:**

**Ingatstone:**

09.40 66420 4M94 Felixstowe-Lawley Street



10.17 66155 6Y34 Ipswich-Ripple Yard



10.45 B1 61306 t/t 47580 1Z61 Norwich-Windsor  
**19<sup>th</sup> February:**

**Brixton:**

10.02 66079 4E26 Dollands Moor-Scunthorpe

**Tonbridge West Yard 11.10-11.25:**

20901/905, 66702/715/726/744/759, 73107/119

73128/136/212/961/962, GLV's 68501/505

**Tonbridge:**

11.31 73128 0Y22 Tonbridge West-St Leonards

12.14 66764 4E19 Mountfield Sidings-Doncaster

12.39 66754 6O69 Neasden-Tonbridge West

14.51 73141+9481+6261+999550+1256+73201

1Q58 Hither Green & return



**Hither Green:**

15.46 66201 7U41 Stewarts Lane-Angerstein Wharf

**Lewisham:**

15.50 37604/9703 3Z03 Derby-Hither Green

**New Cross:**

15.55 66846 t/t 66847 engineers tracklaying

**Marylebone:**

16.47 67018 1U55 Marylebone-Banbury

17.50 68008 1U61 Marylebone-Banbury



**Bob Eastwood:**

**11<sup>th</sup> February:**

**Skelton Junction, York:**

43206/208/238/239/267/277/299/301-303/305/308

43313-315/317/423/465/467/468, 91101/07/08/11

91114/16/17/19/21/22/28/30/32, 180114, 185102

185103/06-08/10/12/14/15/19/22/28/31-33, 220002

220004/07/08/10/11/16/23/24/29/32/33, 221120/24

221126/30/31/34

10.35 66588 York-Redcar coal

11.02 66717 Tyne-Drax coal

12.01 66128 Redcar-Rylstone coal

12.03 66512 York-Potland Burn coal

12.14 66079 Eggborough-Redcar coal  
12.40 66616 Tyne-Cottam coal  
12.56 66133 West Burton-North Blyth coal  
13.26 66034/117 Doncaster-Tyne MHA's  
13.32 66766 Tyne-Eggborough coal  
14.00 66745 Drax-Tyne coal  
14.20 66031 Redcar-Drax coal  
14.44 66740 Doncaster-Tyne coal  
14.57 66077 Redcar-Margam coal  
15.06 66714 Tyne-Ferrybridge coal  
15.44 66078 Potland Burn-Drax coal  
15.56 66105 L/E southbound  
16.33 66746 Tyne-Drax coal  
16.41 60063 Lackenby-Scunthorpe steel  
16.50 66735 North Blyth-Ferrybridge

**19<sup>th</sup> February:**

**Ely:**

158799/806/810/864, 170105/106/109/204/206  
170207/272/273/637, 365503/11-13  
14.03 66730 enterprise  
14.36 70804/66846 aggregates  
14.42 66113 enterprise  
15.17 66593 Freightliner  
15.33 66546 L/E  
15.55 66193 Lafarge  
16.11 66567 Freightliner  
16.37 66020 aggregates

**Albert Ward:**

**17<sup>th</sup> February:**

**Sheffield/Doncaster 10.15-16.30:**

08724, 43206/238/239/251/257/272/274/277/295  
43296/299/300/305/307/308/310-312/314-316/319  
43367/423/467, 60002/40, 66021/031/084/181/528  
66557/570/615/725/742/755/764/766/767/770/772  
67003/24, 70013, 91101/04/05/07/12-16/18/19/21  
91125, 142029/34/70/89/92-94, 144002/10/11/14  
153328/79/84, 158770/780/792/813/815/851/854  
158857/859/903/909/910, 170303/304/305/308  
180105/09/11-13, 185103/26/27/33/42, 220003/04  
220010/14/23/26/29/31, 221119/29/41, 222004  
222014/016, 321902, 322484, DVT's 82203/08-10  
82212-15/17/26-28/31, Snow Ploughs 965576/77  
966098/99, DR 73113, CI 460 coaches 67901  
67907/74403/74434

**24<sup>th</sup> February:**

**Birmingham New Street:**

153334/68, 158823/841, 170111/506/509/635  
172342, 220008/17/20, 221117/27/37, 323201-03  
323206-14/17-19/21/22/40/42/43, 390044/138

**Birmingham Moor Street:**

67017, 165012, 168109/112/214/215/217/219  
172211/213/215/216/218-221/331-334/336-341  
170343/344

**Ian McAlpine:**

**30<sup>th</sup> January:**

**Peterborough:** 158770

**Ely:** 66025, 170273

**Norwich:** 47790/818, 170270

**31<sup>st</sup> January:**

**Peterborough:** 70020, 365513/16

**Huntingdon:** DR 75402

**Biggleswade:** 66192

**King's Cross:** 67016, 365519/38

**6<sup>th</sup> February:**

**Peterborough:**

31233, 66125/147/742, 86401, 91105, 180112  
DVT 9708

**Doncaster:** 08724, 66092/615, 67024

**York:** 37606, 66433, DR 75301/303

**Northallerton:** DR 73111

**Darlington:** DVT 82210

**7<sup>th</sup> February:**

**Darlington:** 66433, 185141

**Durham:** 220028

**13<sup>th</sup> February:**

**Peterborough:** 66188/703/730, 158864, 170273

**Nottingham:** 43052/089, 158773, 220013

Trams 203-05/07/08/11/13-17/19/20

**14<sup>th</sup> February:**

**Peterborough:**

**34067 'Tangmere',** 43257/296, 57315, 66569  
70019, 365508/36

**Biggleswade:** 66147

**Hornsey:** 08892

**King's Cross:** 67022, 365514/19

**Euston:**

350232/234/260/369/373, 378216, 390050

**Camden Sidings:** 350109/113/129/246/253

**South Hampstead:** 378233

**Brondesbury:** 378222/225

**Gospel Oak:** 172001/007

**Holloway:** DR 73943

**Harringay Green Lanes:** 172006/007

**20<sup>th</sup> February:**

**Peterborough:**

91132, 365508/36, DVT 82201, DR 75402

**King's Cross:** 67024, 91132, DVT 82201

**21<sup>st</sup> February:**

**Peterborough:** 66121/593, 170271, 365505/18

**Huntingdon:** DR 75403

**King's Cross:** 67024, 365502/14

**Nigel Matthews:**

**20<sup>th</sup> February:**

**Stafford 10.30-18.15:**

37059/405, 47790, 66001/065/086/132/302/304  
66423/428/515/542/546/572/704/709, 70007/019  
70010, 86605/613/614/628, 90043/45, 92011/41  
220003/05/11/12/14/24/26/28/29, 221101-03/05/06  
221108/12-16/18/21/22/34/38/39/43, 350102/104  
350105/11/14/19/22/231/246/248/256/257/259  
350369/374, 390002/005/006/008/010/020/039  
390040/042-044/050/103/114/115/117-119  
390121-126/128-130/132/135/137/138/141/148  
390151-153/155-157

**Derek Everson:**

**11<sup>th</sup> February:**

**Stafford 11.00-13.15:**

**61306 'Mayflower',** 37059, 47580, 59201, 6147/155  
66566/721, 86609/27, 90002/04/07/08/10/11/13/16  
90034/43/46/47



## Gordon Kirkby

7<sup>th</sup> February:

**Doncaster 1530-1830:**

43208/274/290/311/12/17-19/423/467, 47812/43  
60001/21/97, 66021/92/113/147/514/44/565/603  
66701/707/750/758. 67024/30, 91105/07/08/10  
91113/15-19/21/25/32 142019/26/27/65/87/92/93  
144002, 150138, 153310, 158797/845/853/902  
158904, 170304/306, 180105/109/110/112/114  
185111/36/43, 220023/28/31, 222010, 321901/902  
322485. DVTs 82203/04/05/08/10/14-16/23/30

## Colin Pottle

20<sup>th</sup> February:

**Acton Bridge 06.45-15.30:**

06.55 37611/602 6C53 Crewe-Sellafield flasks  
06.59 66709 6X41 Dagenham-Garston Ford cars  
07.01 2 x 66 GBRF 6G62 Liverpool Bulk Terminal-  
Ironbridge PS biomass  
07.04 66068 6M38 Southampton East Docks-  
Halewood empty car carriers  
07.27 66140 6M14 Dollands Moor-Ditton aluminium  
cargowaggons  
07.37 66542 Ditton-Crewe light engine  
07.55 60091 6F60 Arpley Yard-Runcorn chemicals  
08.16 66416 Garston-Crewe light engine  
08.29 66301 4S43 Daventry-Mossend container



08.31 67009 Crewe TMD-Arpley Sidings light  
08.38 70001 4K44 Garston-Crewe Basford Hall  
container



08.50 90049 4F45 Crewe Basford Hall-Garston  
container  
09.01 DR77905 + DR73118 Crewe Warrington BQ  
(see photo at end)  
09.22 325001 + 325011 + 325004 1F00 Willesden-  
Warrington mail train (see photo at end)

09.27 66429 Crewe Basford Hall-Carlisle dept  
09.36 66304 4M34 Coatbridge-Daventry container  
09.50 70011 6M12 Portbury-Fiddlers Ferry empty  
hoppers  
10.05 66232 6K32 Warrington Arpley-Stoke  
Marcroft wagons for repair  
10.50 66708 Longport – Tuebrook Sidings light  
11.22 66951 6J34 Runcorn-Pendleton RTS empty  
binliner  
11.37 60091 6F62 Runcorn-Arpley Yard chemicals  
(see photo at end)  
11.54 66065 6O42 Halewood-Southampton East  
Docks loaded cars  
11.54 66523 6F33 Bredbury RTS-Runcorn loaded  
binliner  
12.04 92041 4M25 Mossend-Daventry container  
(see photo at end)  
12.15 90049 4K64 Garston-Crewe Basford Hall  
container (see photo at end)  
12.40 60091 6F62 Runcorn-Arpley Yard chemicals  
12.42 66068 6M44 Southampton East Docks-  
Halewood empty cars  
12.49 66606 Fiddlers Ferry PS-Tunstead Sidings  
13.12 66418 4M45 Felixstowe-Ditton container  
13.24 68009 Crewe Gresty Bridge-Preston driver  
training  
13.28 66232 6F31 Stoke Marcroft-Warrington  
Arpley wagons off repair  
14.20 66523 6H35 Runcorn-Northenden RTS  
empty binliner  
14.25 66428 4S44 Daventry-Coatbridge container  
14.36 68004 Crewe-Carlisle Kingmoor ecs



14.53 70011 4V58 Fiddlers Ferry-Portbury hoppers



15.16 68009 Preston-Crewe Gresty Bridge driver  
training



above 60001 marshalling a train of Perch wagons in Doncaster Decoy Yard at 08.44 with 47812 + 47843 beyond, below 60087 + 60021 in the sidings south of Doncaster station  
7<sup>th</sup> February 2015 (Gordon Kirkby)



92041 Acton Bridge, 20<sup>th</sup> February 2015 (Colin Pottle)









90049 Acton Bridge, 20<sup>th</sup> February 2015 (Colin Pottle)



66606 Acton Bridge, 20<sup>th</sup> February 2015 (Colin Pottle)



DR73118 + DR77905 Acton Bridge,  
20<sup>th</sup> February 2015 (Colin Pottle)



325001 + 325011 + 325004 Acton Bridge,  
20<sup>th</sup> February 2015 (Colin Pottle)

# OFF THE BEATEN TRACK

*An occasional series on odd items of rolling stock found around the UK, not dumped or formally preserved, but in use as part of a leisure facility or in private use as part of a pub or guest house.*

**Seven Lakes Country Park, Eland:** A road / rail incident safety training facility has been created in the grounds of Seven Lakes Country Park near Eland to the south of Crowle in North Lincolnshire, which can be seen from the A161. The Doncaster to Scunthorpe railway passes to the south, as does the parallel A18, with Crowle station (strangely not Eland which is adjacent) a few hundred yards away. The access road being opposite the Country Park entrance.

Ex-Virgin Mk2 6163 has been placed on a section of double track with a level crossing and unprotected footpath crossing, complete with all relevant signage. The coach has been given a mock HST style cab. The purpose of the facility is as part of an overall Rescue Day which brings together as many of the rescue services as possible in one place to demonstrate 'live' what they do and how they do it and so raising public awareness on safety issues within a fun environment with other displays. The facility is jointly run by Humberside Fire & Rescue, Humberside Police and various other rescue services and is sponsored by Network Rail, VolkerRail and Tata Steel amongst others. Though Rescue Day has been going for 6 years, the 2014 event held on the 12<sup>th</sup> July was the first time this facility was incorporated, a first for this type of public display in the UK. The photos below were taken on the 4th September 2014.



Rescue Day has been held for 6 years and the 2015 event is being held on the 11<sup>th</sup> July, 10.30-17.00, admission price £5.00, under 16s & OAPs £2.50. For info see <http://www.rescueday.com/>



# BORDERS RAILWAY

## Part 1 A720 Edinburgh Bypass - Falahill by Trevor Roots:

Following on from the report in the October 2014 issue I managed to photograph the line from the A720 bypass down to Stow before the light failed on my way down south on the 5<sup>th</sup> December 2014. Then on the way back north on the 19<sup>th</sup> December 2014 I was able to just about photograph the southern section from Tweedbank up to Stow, again before the light failed. The advantage of the latter date is that work had stopped for Christmas so the photos were as up to date as possible before work resumed in the New Year. The only disappointment was that I didn't witness a track laying train as it wasn't working on the 5<sup>th</sup> and the only train I did see was autoballasters slowly moving over Newbattle Viaduct as I passed beneath on the A7 in the rain and dark on the 19<sup>th</sup>...don't even know what was pulling it. However a bonus was the sight of a tamper working on the 5<sup>th</sup>, although in waiting 30 mins for it to crawl closer the light deteriorated.

*right* double track down to single track south of  
A720 Edinburgh Bypass from the A6106,  
19<sup>th</sup> December 2014



Tracklaying had reached Ferniehurst just north of Bowshank Tunnel by the 19<sup>th</sup> December with remaining track laid to Tweedbank by the 12<sup>th</sup> February. This now means most material can be brought in by rail relieving the A7 and local roads along the route.



old Eskbank station site looking north towards Lasswade Road (A768) from Bonnyrigg Road (A6094), with the remains of the previous cycleway / footpath access ramp down to the trackbed just showing to the right of the bridge, 5<sup>th</sup> December 2014



I will deal with the route north of the A720 Edinburgh Bypass when access is available to get photos. The route south of the Bypass, just east of Sherifhall Roundabout (junction of the A7) first goes under Old Dalkeith Road (A6106) at the junction with Melville Gate Road. It then crosses the River North Esk before entering Eskbank where the next station will be. It passes under three road bridges, Melville Road (B6392), Lasswade Road (A768) and Bonnyrigg Road (A6094) all of which converge on a roundabout to the east of the railway in the centre of Eskbank. The old Eskbank station lies between the latter two roads as can be seen in the photo opposite bottom. The new Eskbank station is located south of the A6094 close to Edinburgh Colleges and accessed off Dalhousie Road (B6392) which also comes off the roundabout heading south to join the A7 at Hardengreen Roundabout slap bang across the original route. A new viaduct has been constructed to span the Roundabout and reconnect the embankments, the southern of which then leads onto the impressive Newbattle (Lothianbridge) Viaduct, which thankfully remained. This spans both the River South Esk and the A7.



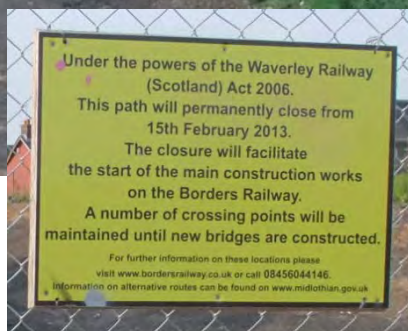
*above* approaching Hardengreen Roundabout on the A7 looking south with the A6094 first left under the viaduct and *below* looking south with A7 continuing away to the left



I've not had chance to stop on this busy section of the A7, which turns under the Viaduct, to get a photo. From here the line passes the site of the former Newtongrange station, which had been filled and used as a cycleway / footpath with crossing points between residential areas on either side. To allow both sides of the line to remain connected a new footbridge has been constructed between New Star Road and Station Street (opposite Dean Park) on one of the crossing points.



above looking north from the A7 with Station Street on the right, showing the fill being removed in the former station and the crossing point to be replaced with a footbridge, 22<sup>nd</sup> July 2013 and below the footbridge almost finished, 5<sup>th</sup> December 2014



Passing under the A7 the new Newtongrange station is being constructed alongside the Lady Victoria Pit which forms the Scottish National Mining Museum. A photo appeared on page 9 of the August 2013 issue showing the start of the work. The views opposite on the 3<sup>rd</sup> September and the 5<sup>th</sup> December 2014 show the progress of work since.

Before leaving the outskirts of Edinburgh and heading largely through open countryside, the route passes back over the A7 to Gorebridge. The section between Newbattle and Gorebridge was one of the first areas to start laying sleepers in early September 2014.







Taken from a small lane between Arniston (outskirts of Gorebridge) and Carrington the two views below looking north, show the formation at the start of laying sleepers and after tracklaying on the 3<sup>rd</sup> September and the 5<sup>th</sup> December 2014 respectively. The views also show the work needed to be done to repair / improve / replace bridges along the route, with most parapets being raised as with the B704 in the background and rebuilt as with a farm access in the foreground. In the second photo the Forth Estuary can be seen in the distance and the Newtongrange Mining Museum on the right.





Gorebridge station is situated between the two main roads through the village, the B6372 and the B704 from where the two views above and below have been taken looking south on the 3<sup>rd</sup> September and the 5<sup>th</sup> December 2014 respectively. The former station building can be seen beyond the new car park as can one of the first signals to be installed in the lower photo foreground.



In the views overleaf taken on the 3<sup>rd</sup> September and the 5<sup>th</sup> December 2014 respectively looking south from the B6372, the work needed to stabilise and support the banks in cuttings along the route can be seen to good effect. In the lower photo one of the new radio masts can be seen on the left as well as another footbridge in the distance.





South of Gorebridge the route traverses open countryside and meanders north-eastwards away from the A7 for about 4 miles. This is the 'curviest' section and at the furthest at 1¼ miles away from the A7. The section between Borthwick and Tynehead is double tracked.



The route passes under the B6367 at Tynehead at its junction with the B6438. South of road bridge lay the former Tynehead station, beyond which the line reverts back to single track and the pointwork was one of the first bits of track to be laid (see photo below right taken on the 3<sup>rd</sup> September 2014).



It was at Tynehead that I saw tamper DR 73108 *Tiger* working south. In the photo below DR 73108 is seen on the 5<sup>th</sup> December 2014 with one of the new bridges constructed to carry a farm access road, previously carried across the trackbed on fill, which can be seen still in place in the distance in the photo above left taken on the 3<sup>rd</sup> September 2014. This was left in place until the bridge was built, the parapet of which can be seen beyond above the fill.







The route rejoins the A7 just north of the hamlet of Falahill and a mile further the two cross. Following closure this major intersection had become a flat crossing with the former road bridge removed. This had to be reinstated with the A7 realigned over the new bridge. In the photo above taken on the 3<sup>rd</sup> September 2014 looking south the old road is to the left and the new alignment to the bridge to the right. The railway is on the left. In the photo below also taken on the 3<sup>rd</sup> September 2014 looking north the railway can be seen passing under another farm access bridge being reinstated south of the A7 bridge in the distance.



In the photo below taken on the 5<sup>th</sup> December 2014 from a spot to the left of the top photo, the completed bridge is shown with the re-aligned A7 now passing over it. The footpath on the line of the old A7 leads back to a small group of houses. The ballasted railway can be seen on the left.



South of Falahill the railway follows the A7(to the west) and the Gala Water all the way to Galashiels, continually crossing the river and several side roads. Fortunately all the river bridges remained in place and just needed refurbishment, however the road crossings required new bridges and in some cases major realignment of the roads.



Just south of Falahill lies the former Heriot station and the first road crossing, the B709 which was originally via a level crossing between the up and down platforms. In the photo above taken on the 3<sup>rd</sup> September 2014 the remaining down platform can be seen with the station buildings in the trees to the left of the trackbed. Just in front of the platform is a new culvert carrying the track over Shoestanes Burn from the left into Gala Water on the right. Because of the flat crossing the road has been moved a couple of hundred yards south where it could be taken over the railway on a new bridge onto higher ground near Sandyknowe. The new road bridge is seen below (looking south) taken on the 3<sup>rd</sup> September 2014. From Sanyknowe a minor road leaves the B709 and runs alongside the western side of the railway, occasionally connected across the railway to the A7.





In the photo below taken looking east on the 3<sup>rd</sup> September 2014, the new road junction with the A7 can be seen, as can the culvert for the Gala Water, between it and the railway.



## INFRASTRUCTURE NEWS

### **Daventry International Rail Freight Terminal (DIRFT):**

The third extension to the terminal is currently being built northwest of the existing development alongside the Northampton loop line.



70020 passing DIRFT at 12.45 on the diverted (due to the Landslip at Harbury) southbound Garston - Southampton intermodal, Barby Nortoft, 10<sup>th</sup> February 2015 (Roger Thomas)

# GLOUCESTERSHIRE SIGHTINGS

by Nigel Hoskins

The following sightings are mostly from Gloucester Station, but also include workings on the avoiding line southeast of the station between Barnwood and Gloucester Yard Junctions. Only freight and notable loco hauled workings are shown with the diagram code, time (if known) plus origin and destination (see location codes).

## 19<sup>th</sup> January

10.48 66425 4V38 DV-WG  
12.00 66021 4E66 MG-RA  
12.22 60079 6E41 WH-LY  
12.44 70003 4V06 RG-SG  
13.40 70808 4C30 AW-GL  
17.12 66109 6V35 BS-AV  
17.56 66132 6V92 CY-MG

## 20<sup>th</sup> January

11.50 60079 6E41 WH-LY  
12.53 66074 6V05 RO-MG  
12.58 66021 6V67 RA-MG  
14.14 37667/218 6M56 BE-CE  
15.57 66086 6V07 RO-MG  
17.10 66065 6V92 CY-MG  
20.21 66060 6E30 MG-HL

## 21<sup>st</sup> January

06.27 66050 6M81 MG-RO  
09.14 66065 6M96 MG-CY  
10.48 66305 4V38 DV-WG  
10.58 70003 4V09 RG-SG  
11.14 60039 6B13 RN-WH  
12.00 60054 6B35 WH-RN  
12.05 66001 6V05 RO-MG  
13.12 37667/218 6M63 BR-CE  
14.42 70808 4V13 GL-PY  
15.00 66050 6V07 RO-MG  
15.04 66018 6V92 CY-MG  
17.22 66081 6V35 BS-AV  
20.01 66003 6V55 BD-RN

## 22<sup>nd</sup> January

08.27 66021 6M81 MG-RO  
09.09 66733 6V80 WE-PY  
11.14 60039 6B13 RN-WH  
11.51 66430 4V38 DV-WG  
11.56 66003 4E66 MG-RA  
12.02 66031 6V05 RO-MG  
12.14 20305/37609 6M56 BE-CE  
13.00 66150 6V37 TO-MO

## 23<sup>rd</sup> January

03.34 66756 6V00 PC-CF  
04.15 66050 6M03 RN-BD  
04.40 66152 6M11 MG-RO  
08.30 66043 6M81 MG-RO  
09.08 66093 6M96 MG-CY  
10.48 66425 DV-WG  
10.57 70003 4V09 RG-SG  
11.01 60039 6B13 RN-WH  
12.08 66152 6V05 RO-MG  
12.42 43013/014 1Z20 OO-DY  
13.09 66003 6V67 RA-MG  
13.22 57008/002 6M63 BR-CE  
14.58 66132 6V92 CY-MG  
16.06 66043 6V07 RO-MG  
18.14 66117 6V35 BS-AV  
20.24 66125 6E30 MG-HL

## 24<sup>th</sup> January

10.58 60039 6B13 RN-WH  
18.30 66185 6V06 HD-CT  
21.49 66031 6V29 LC-CT  
22.20 66128 6V02 HL-LL

## 25<sup>th</sup> January

11.36 66434 4V38 DV-WG  
17.00 66001 6E47 MG-MD  
18.01 66434 4M36 WG-DV  
19.00 66621 6V82 TU-WY  
19.06 66714 6V83 PB-MO  
20.00 66018 6E30 MG-HL  
21.57 66102 6E93 LL-SC

## 26<sup>th</sup> January

06.12 66733 6E81 PY-Hexthorpe  
08.00 57002/008 6V73 CE-BE  
10.48 66430 4V38 DV-WG  
11.06 60039 6B13 RN-WH  
12.22 70808 4C30 AW-GL  
12.35 70006 4V06 RG-SG  
14.59 66125 6V92 CY-MG  
15.56 66143 6M41 MG-RO  
17.59 66016 6V35 BS-WY

## 27<sup>th</sup> January

08.26 66061 6M81 MG-RO  
09.55 66733 6V80 WE-PY  
10.48 66305 4V38 DV-WG  
10.57 70004 4V09 RG-SG  
11.14 60039 6B13 RN-WH  
12.22 60059 6E41 WH-LY  
13.54 37612/606 6M56 BE-CE  
14.59 66199 6V92 CY-MG  
15.57 66061 6V07 RO-MG  
17.11 70005 4V47 RG-SG  
66128 6M39 PY-RC

## 28<sup>th</sup> January

03.43 66001 6M03 RN-BD  
08.29 66177 6M81 MG-RO  
09.12 66056 6M96 MG-CY  
09.20 66733 6V80 WE-PY  
09.55 66088 4V70 RC-AV  
10.57 70004 4V09 RG-SG  
13.14 37259/602 6M63 BR-CE  
14.49 70005 4V47 RG-SG  
16.21 66128 6M39 PY-RC

## 29<sup>th</sup> January

03.37 66750 6V00 PC-CF  
08.29 66003 6M81 MG-RO  
10.00 66099 4V70 RC-AV  
10.48 66434 4V38 DV-WG  
10.58 70004 4V09 RG-SG  
11.20 60039 6B13 RN-WH  
12.23 60059 6E41 WH-LY  
12.48 66021 6V05 RO-MG  
12.54 31601 0V31 WW-BT  
13.42 57002/008 6M56 BE-CE

## 29<sup>th</sup> January (cont)

13.58 66529 4Z32 BL-CE  
14.35 70808 4V14 GL-PY  
14.55 70005 4V47 RG-SG  
20.17 66001 6E30 MG-HL  
20.25 66434 4M36 WG-DV  
21.27 66750 6E35 CF-PC

## 30<sup>th</sup> January

06.30 66733 6E89 PY-WE  
09.06 66094 6M96 MG-CY  
11.13 60039 6B13 RN-WH  
11.20 66427 4V38 DV-WG  
12.09 66003 6V05 RO-MG  
12.52 66161 6V67 RA-MG  
13.45 70803 0F80 WY-GL  
13.49 67012/27 1Q14 DY-SW  
14.22 70808 0A28 GL-HY  
14.34 70803 4V13 GL-PY  
14.56 70005 4V47 RG-SG  
18.07 66092 6V06 HD-CT  
18.11 66016 6V35 BS-AV  
20.00 66080 6V55 BD-RN

## 1<sup>st</sup> February

11.09 66025 6W09 MT-DT  
11.27 66431 4V38 DV-WG  
17.00 66021 6E47 LL-MD  
17.55 66431 4M36 WG-DV  
19.02 66606 6V82 TU-WY

## 2<sup>nd</sup> February

08.48 66188 4V70 TO-PY  
11.47 70803 4C30 AW-GL  
12.22 60059 6E41 WH-LY  
12.35 DR73907 6J89 SH-RY  
13.01 60039 6B13 RN-WH  
13.15 37612/605 6M56 BE-CE  
13.49 70004 4V47 RG-SG  
14.07 70803 0Z30 GL-WY  
14.47 73138 0Z73 EH-DY  
14.49 66207 6V92 CY-MG  
15.14 66188 6M39 PY-RC  
16.03 66018 6M41 MG-RO  
18.19 66019 6V35 BS-AV  
18.33 70801/809 0V75 BS-WY  
19.58 66756 6V83

Bury St Edmunds-CT

22.00 66527 6M28 HY-BS  
23.21 66092 6V97 BN-CT

## 3<sup>rd</sup> February

09.08 66731 6V80 WE-PY  
13.43 57002/008 6M56 BE-CE  
14.49 66207 6V92 CY-MG  
15.15 37219 0F80 WW-CF  
15.51 66056 6V07 RO-MG  
15.59 66065 6M41 MG-TO  
18.02 70006 4V47 RG-SG  
19.37 66143 6V69 BS-AD



**3<sup>rd</sup> February (cont)**

20.19 66063 6E30 MG-HL  
21.53 66627 6M28 HY-BS

**4<sup>th</sup> February**

04.45 66050 6M03 RN-BD  
09.08 66731 6V80 WE-PY  
13.50 37218/604 6M63 BR-CE  
20.50 66181 6E03 AP-MF

**5<sup>th</sup> February**

10.57 70004 4V09 RG-SG  
11.11 60059 6B13 RN-WH  
11.47 57002/008 6M56 BE-CE  
12.00 66094 6V05 RO-MG  
15.17 66125 6M39 PY-RC  
15.50 66056 6V07 RO-MG  
15.57 66027 6M41 MG-RO  
22.34 37402 3Q64 DT-SW  
23.40 56103 6Z36 SN-CT

**6<sup>th</sup> February**

06.52 66181 6V85 MF-AP  
08.05 66014 4V83 TO-PY  
09.35 66200 4V70 RC-AV  
10.54 70004 4V09 RG-SG  
14.47 70006 4V47 RG-SG  
16.47 57305/312 1Z43 PN-CF

**7<sup>th</sup> February**

01.38 66204 6M74 CT-LC  
04.20 66135 6D98 CT-HD  
11.00 60054 6B13 RN-WH  
14.51 70006 4V47 RG-SG  
17.25 66135 6V06 HD-CT  
21.49 66204 6V29 LC-CT  
22.13 66165 6V02 HL-LL

**8<sup>th</sup> February**

11.32 66432 4V38 DV-WG  
14.12 66006 6W11 MT-DT  
17.11 66105 6E47 LL-MD  
17.54 66432 4M36 WG-DV  
18.57 66523 6V82 TU-WY  
20.04 66115 6E30 MG-HL  
22.15 66752 6V80 WE-PY  
22.33 66008 6E93 LL-SC

**9<sup>th</sup> February**

10.48 66434 4V38 DV-WG  
11.37 66711 6M25 WY-Stud Farm  
11.51 70801 4C30 AW-GL  
12.26 60091 6E41 WH-LY  
12.37 70010 4V09 RG-SG  
13.00 60039 6B13 RN-WH  
13.20 70801 0F75 GL-WY  
14.13 37609/218 6M56 BE-CE  
14.58 66050 6V92 CY-MG  
16.10 66197 6M41 MG-RO  
19.34 66076 6V35 BS-AV  
20.18 66753 6V83 PB-MO  
21.58 56103 6Z35 CT-SN  
22.54 66187 6V81 RM-CT

**10<sup>th</sup> February**

02.41 66757 6V00 PC-CF  
08.30 66150 6M81 MG-RO  
09.09 66752 6V80 WE-PY  
09.55 66040 4V70 RC-AV  
10.47 66301 4V38 DV-WG  
10.57 70010 4V09 RG-SG  
11.04 60039 6B13 RN-WH  
11.14 66738 6M25 WY-Stud Farm

**10<sup>th</sup> February (cont)**

11.47 60015 6E41 WH-LY  
12.02 66012 6V05 RO-MG  
13.42 37609/218 6M56 BE-CE  
14.48 66065 6V92 CY-MG  
16.00 66150 6V07 RO-MG  
19.05 60039 6B47 WH-RN  
19.15 66752 6E81 PY-WE  
19.38 66186 6V69 BS-AD  
20.04 70003 4V47 RG-SG  
20.20 60063 6E30 MG-HL  
20.25 66301 4M36 WG-DV

**11<sup>th</sup> February**

01.25 56103 6Z36 SN-CT  
02.00 66132 6M94 MG-CY  
03.08 66728 6V83 PB-CT  
04.06 66197 6M03 RN-BD  
04.30 66093 6M11 MG-RO  
08.28 66065 6M81 MG-RO  
08.35 66003 4V83 TO-PY  
09.10 66150 6M96 MG-RO  
10.48 66305 4V38 DV-WG  
11.02 70010 4V39 RG-SG  
11.12 60039 6B13 RN-WH  
11.16 66711 6M25 WE-PY  
11.51 60091 6E41 WH-LY  
12.00 66093 6V05 RO-MG  
14.46 70011 4V47 RG-SG  
15.04 66132 6V92 CY-MG  
15.15 66003 6M39 PY-RC  
18.10 66164 6V35 BS-AV  
18.53 66075 6E03 AP-MF  
20.01 56103 6Z35 CT-SN  
20.11 66305 4M36 WG-DV  
20.32 66197 6V55 BD-RN  
21.25 66053 6V52 WV-MG  
66752 6V80 WE-PY

**12<sup>th</sup> February**

04.12 66527 6V25 BS-HY  
04.36 60054 6M11 MG-RO  
06.08 66164 6M90 AV-CI  
06.22 66132 6M59 MG-WV  
07.25 57002/008 6V73 CE-BE  
08.27 66093 6M81 MG-RO  
09.12 66177 4V70 RC-AV  
10.48 66303 4V38 DV-WG  
10.52 70010 4V09 SG-RG  
10.57 60019 6B13 RN-WH  
11.14 66738 6M25 WY-Stud Farm  
12.21 60091 6E41 WH-LY  
12.45 60054 6V05 RO-MG  
12.53 66185 6V37 TO-MO  
13.17 57002/088 6M56 BE-CE  
15.08 66232 6V92 CY-MG  
20.12 60054 6E30 MG-HL

**13<sup>th</sup> February**

03.57 66143 6M03 RN-BD  
04.25 60019 6M11 MG-RO  
08.01 66050 4V38 TO-PY  
08.27 66132 6M81 MG-RO  
09.09 66093 6M96 MG-CY  
09.30 50007 0Z50 GL-Yeovil  
09.52 66177 4V70 RC-AV  
10.48 66434 4V38 DV-WG  
11.00 70010 4V09 RG-SG  
11.13 60039 6B13 RN-WH

**13<sup>th</sup> February (cont)**

11.14 66711 6M25 WY-Stud Farm  
11.55 67012/27 1Q15 DY-CS  
12.18 60015 6E41 WH-LY  
12.29 60019 6V05 RO-MG  
12.48 66128 6V67 RA-MG  
13.36 67012/27 1Q15 CS-Alstone  
14.59 66200 6V92 CY-MG  
16.00 66132 6V07 RO-MG  
16.55 50007/50050 0Z51 Yeovil-WW  
19.08 66126 6E03 AP-MF  
50007 4Z50 WW-GL

**14<sup>th</sup> February**

11.00 60039 6B13 RN-WH  
18.02 66155 6V06 HD-CT  
21.51 66150 6V02 HL-LL

**15<sup>th</sup> February**

16.58 66093 6E47 MG-MD  
17.40 66007/085/164/238/091 0Z85 TO-MG  
18.51 66756 6V83 PB-CT

**16<sup>th</sup> February**

07.30 37610/611 6V73 CE-BE  
07.55 66151 6V85 MF-AP  
08.27 66155 6M81 MG-RO  
08.55 66017 4V83 TO-AV  
11.15 66711 6M25 WY-Stud Farm  
11.55 70809 4C30 AW-GL  
12.19 60015 6E41 WH-LY  
12.40 70004 4V06 RG-SG  
13.04 60039 6B13 RN-WH  
13.47 37610/611 6M56 BE-CE  
15.00 66143 6V92 CY-MG  
15.56 66076 6M41 MG-RO  
15.57 66155 6V07 RO-MG

**17<sup>th</sup> February**

06.30 66118 6M90 AV-CI  
06.46 66007 6M98 CT-SA  
08.44 66019 6M81 MG-RO  
09.19 66752 6V80 WE-PY  
10.18 66305 4V38 DV-WG  
11.23 66738 6M25 WY-Stud Farm  
11.44 60001 6B13 RN-WH  
12.03 66165 6V05 RO-MG  
12.06 56103 6Z35 CT-SN  
12.23 60015 6E41 WH-LY  
15.01 66143 6V92 CY-MG  
15.59 66019 6V07 RO-MG  
20.09 66093 6E30 MG-HL

**18<sup>th</sup> February**

00.27 66037 6M39 MO-Radlett  
03.35 66135 6M03 RN-BD  
08.28 66040 6M81 MG-RO  
10.48 66427 4V38 DV-WG  
10.59 70010 4V09 RG-SG  
11.13 66711 6M25 WY-Stud Farm  
11.14 60039 6B13 RN-WH  
12.02 60001 6V05 RO-MG  
12.14 31601 0Z31 WW-BT  
12.16 70809 0Z63 GL-Tremains  
14.20 37402/409 6M63 BR-CE  
15.00 66143 6V92 CY-MG  
15.58 66040 6V07 RO-MG  
18.11 66145 6V35 BS-AV  
19.00 66752 6E81 PY-WE

<b>18<sup>th</sup> February (cont)</b>			<b>19<sup>th</sup> February (cont)</b>			<b>20<sup>th</sup> February (cont)</b>		
21.07 66005 6E03	AP-MF		20.07 43013/014 1Z17	DY-OO		19.02 66005 6E03	AP-MF	
<b>19<sup>th</sup> February</b>			21.35 56103 6Z36	SN-CT		20.01 66039 6V55	BD-RN	
09.29 66204 6M81	MG-RO		22.29 66115 6V04	KY-CT		<b>21<sup>st</sup> February</b>		
09.48 66017 4V70	RC-AV		<b>20<sup>th</sup> February</b>			09.24 66095 4V70	RC-AV	
10.49 66434 4V38	DV-WG		03.32 60039 6M03	RN-BD		10.57 60063 6B13	RN-WH	
10.58 70010 4V09	RG-SG		08.28 66025 6M81	MG-RO		15.14 66016 6M39	PY-RC	
11.01 60063 6B13	RN-WH		09.02 66090 6M96	MG-CY		17.01 66035 6V06	HD-CT	
11.15 66711 6M25	WY-Stud Farm		10.58 70010 4V09	RG-SG		<b>22<sup>nd</sup> February</b>		
12.19 60017 6E41	WH-LY		11.16 66711 6M25	WY-Stud Farm		12.33 66199 6W04	MT-DT	
12.28 60039 6V05	RO-MG		11.17 60063 6B13	RN-WH		12.50 50017/50007 0Z50	GL-CF	
13.47 70809 0F80	CF-GL		12.01 66115 6V05	RO-MG		13.29 66429 4V38	DV-WG	
14.34 70809 4V13	GL-PY		12.12 43013/014 1Z20	OO-DY		15.53 50007/017/56087 0Z51	CF-WW	
14.44 70004 4V47	RG-SG		12.44 66427 4V38	DV-WG			MG-WW	
15.16 66019 6M39	PY-RC		14.43 70809 4C30	AW-GL		17.12 60063 6E47	MG-MD	
15.57 66204 6V07	RO-MG		14.50 66025 6V07	RO-MG		18.07 66040/016/181/213 0Z85		
17.17 66056 6V92	CY-MG		14.59 66056 6V92	CY-MG			BS-MG	

## Location Codes:

AB Aberdeen	CS Cheltenham	HU Hunterston	MW Moorswater	SF Sifin
AC Achnasheen	CT Cardiff Tidal	HV Haverfordwest	NA Nairn	SG Stoke Gifford
AD Alexander Dock	CU Cumbernauld	HW Heywood Jnct	NE Neath	SH Slough
Jnct	CV Cliff Vale	HY Hinksey	NG Nottingham	SI Stirling
AE Attercliffe	CW Cwmbargoed	IB Ironbridge	NH Newton Heath	SK Shirebrook
AF Ashford	CY Corby	IM Immingham	NJ Norton Jnct	SN Stockton
AH Ashchurch	DC Dyce	IS Inverness	NL Newtonhill	SO Southampton
AJ Awre Junction	DL Dalmeny	JM Jersey Marine	NT Newport	SP Spetchley
AL Alston	DM Dollands Moor	KB Kittybrewster	NV Neville Hill	SR Stourton
AN Acton	DR Doncaster	KC Kirkcaldy	NW Nantwich	SS Swansea
AP Appleford	DS Dalston	KK Kilmarnock	OB Oban	ST Severn Tun. Jnct
AR Abercynon	DT Didcot	KL Kyle of Lochalsh	ON Onrlwyn	SV Stevenage
AT Abbotswood Jnct	DV Dundee	KM Kemble	OO Old Oak Common	SW Swindon
AV Avonmouth	DU Daventry	KN King's Norton	OX Oxwellmains	SY Shipley
AW Aberthaw	DY Derby	KS Kingsland Road	OY Oxley	TD Tyne Dock
AY Ayr	EA Earles Sidings	KT Kennethmont	PA Paisley	TE Trostre
BA Blair Atholl	ED Edinburgh	KY Kingsbury	PB Peterborough	TF Tremorfa
BD Bedworth	EE Elderslie	LA Laira	PC Port Clarence	TG Teigngrace
BE Berkeley	EH Eastleigh	LB Ladybank	PF Peak Forest	TH Theale
BH Brierley Hill	EL Elgin	LC Lincoln	PG Pengham	TJ Tuffley Jnct
BI Burntisland	EU Euston	LD Lydney	PH Perth	TK Tavistock Jnct
BL Bristol	ES Earlseat	LG Lairg	PL Polmont	TL Tilbury
BN Beeston	EV Evesham	LH Leith	PM St Philips Marsh	TN Taunton
BO Bo'ness	EX Exeter	LI Llanithgow	PN Paddington	TO Toton
BP Bath	FB Ferrybridge	LK Lackenby	PO Polmadie	TR Trishington
BR Bridgwater	FF Fiddlers Ferry	LL Llanwern	PR Preston	TU Tees Yard
BS Bescot	FG Fishguard	LM Long Marston	PT Paignton	TS Tunstead
BT Barton Hill	FO Forres	LN Laurencekirk	PW Prestwick	TY Tyseley
BU Burton	FR Fairwater	LO Longsight	PY Portbury	VA Victoria
BW Barrow Hill	FY Falkland Yard	LR Leicester	PZ Penzance	WB Wembley
BZ St Blazey	GC Glasgow Central	LS Leeds	RA Redcar	WE West Burton
BY Barry	GE Georgemas Jnct	LT Longannet	RC Ratcliffe	WG Wentloog
CA Calvert	GL Gloucester	LW Linkswood	RD Reading	WH Westerleigh
CB Coatbridge	GM Grangemouth	LY Lindsey	RE Redmire	WI Whitemoor
CD Charfield	GR Grange Sidings	MC Machen	RG Rugeley	WM Wemyss
CE Crewe	GS Gleneagles	MD Middlesbrough	RI Riccarton	WP Workop
CF Cardiff	GY Grimsby	ME Montrose	RM Rotherham	WR Warrington
CH Chaddesden	HA Hayes	MF Milford	RN Robeston	WS Worcester
CI Clitheroe	HD Handsworth	MG Margam	RO Round Oak	WV Wolverhampton
CK Chirk	HF Hereford	MH Millerhill	RR Rowley Regis	WW Washwood Heath
CL Carlisle	HH Holyhead	ML Motherwell	RV Ravenstruther	WY Westbury
CM Chalmersston	HL Hartlepool	MN Mossend	RY Rugby	YK York
CN Carnforth	HO Halewood	MO Moreton	SA Saltley	YT Yate
CP Chepstow	HR Harwich	MS Maesteg	SB Stourbridge	
CQ Croft Quarry	HS Hunslet	MT Mountsorrel	SC Scunthorpe	
CR Cadder	HT Hastings	MV Manchester Vic	SD Standish Jnct	



# STIRLINGSHIRE SIGHTINGS

by **Derek Sneddon**

The following sightings are from Camelon Station & nearby Carmuir's Junction with an occasional sighting from Falkirk. Only freight and notable loco hauled workings are shown together with the diagram code, time, origin and destination (see location codes)

<b>16<sup>th</sup> January</b>		<b>28<sup>th</sup> January</b>		<b>6<sup>th</sup> February</b>	
05.45 66429 4H47	MN-IS	05.45 66432 4H47	MN-IS	05.45 66301 4H47	MN-IS
10.05 66151 6G25	MN-ES	10.05 66111 6G25	MN-ES	13.00 68006 4A13	GM-AB
13.00 68003 4A13	GM-AB	13.00 68006 4A13	GM-AB	13.30 66080/174 6S36	DS-GM
<b>17<sup>th</sup> January</b>		<b>29<sup>th</sup> January</b>		<b>7<sup>th</sup> February</b>	
05.45 66305 4H47	MN-IS	05.10 66601 6H51	OX-IS	05.45 66305 4H47	MN-IS
10.05 66111 6A32	MN-AB	05.45 66432 4H47	MN-IS	10.05 66118 6A32	MN-AB
11.20 66011 4M30	GM-DV	06.30 66108 6A32	MN-AB	11.20 66232 4M30	GM-DV
13.00 68003 4A13	GM-AB	13.00 68006 4A13	GM-AB	13.00 68006 4A13	GM-AB
13.30 66107 6S36	DS-GM	13.30 66137 6S36	DS-GM	13.30 66174 6S36	DS-GM
<b>18<sup>th</sup> January</b>		<b>30<sup>th</sup> January</b>		16.00 66601 6K03	MH-Arbroath
13.00 68003 4A13	GM-AB	05.00 56113 6S96	SF-GM	17.55 66614 6K02	MH-Arbroath
<b>19<sup>th</sup> January</b>		05.45 66422 4H47	MN-IS	18.00 66619 6K01	MH-Arbroath
05.45 66305 4H47	MN-IS	10.05 66138 6G25	MN-ES	19.00 56113 6K04	MH-Arbroath
08.30 66619 6A65	OX-AB	13.00 68006 4A13	GM-AB	<b>9<sup>th</sup> February</b>	
13.00 68003 4A13	GM-AB	<b>31<sup>st</sup> January</b>		05.45 66305 4H47	MN-IS
<b>20<sup>th</sup> January</b>		05.45 66301 4H47	MN-IS	07.35 66741 0Z73	MN-IS
05.45 66427 4H47	MN-IS	10.05 66138 6A32	MN-AB	08.30 66605 6A65	OX-AB
06.55 56105 6R46	GM-PW	13.00 68006 4A13	GM-AB	13.00 68006 4A13	GM-AB
<b>21<sup>st</sup> January</b>		15.59 66619 6K03	MH-Arbroath	<b>10<sup>th</sup> February</b>	
05.45 66427 4H47	MN-IS	17.53 66614 6K02	MH-Arbroath	05.10 66614 6H51	OX-IS
09.00 37611/610 6S99	CL-GE	18.00 66605 6K01	MH-Arbroath	05.45 66422 4H47	MN-IS
10.05 66102 6G25	MN-ES	18.59 56113 6K04	MH-Arbroath	<b>11<sup>th</sup> February</b>	
13.00 68003 4A13	GM-AB	<b>2<sup>nd</sup> February</b>		05.45 66422 4H47	MN-IS
21.20 56105 6M65	GM-SF	05.45 66434 4H47	MN-IS	08.30 66605 6A65	OX-AB
<b>22<sup>nd</sup> January</b>		08.00 37259/602 6S99	CL-GE	09.00 37607/259 6S99	CL-GE
05.10 66601 6H51	OX-IS	08.30 66605 6A65	OX-AB	10.05 66174 6G25	MN-ES
05.45 66432 4H47	MN-IS	13.00 68006 4A13	GM-AB	13.00 66432 4A13	GM-AB
06.30 66113 6A32	MN-AB	<b>3<sup>rd</sup> February</b>		13.30 66114/086 6S36	DS-GM
<b>23<sup>rd</sup> January</b>		05.45 66301 4H47	MN-IS	21.00 56113 6M65	GM-SF
05.45 66432 4H47	MN-IS	06.55 56113 6R46	GM-PW	<b>12<sup>th</sup> February</b>	
10.05 66118 6G25	MN-ES	13.00 68006 4A13	GM-AB	05.45 66430 4H47	MN-IS
<b>24<sup>th</sup> January</b>		13.30 66118 6S36	DS-GM	06.30 66114 6A32	MN-AB
05.45 66432 4H47	MN-IS	<b>4<sup>th</sup> February</b>		13.00 66432 4A13	GM-AB
11.20 66118 4M30	GM-DV	05.45 66301 4H47	MN-IS	<b>13<sup>th</sup> February</b>	
13.30 66108 6S36	DS-GM	10.05 66015 6G25	MN-ES	05.45 66427 4H47	MN-IS
<b>26<sup>th</sup> January</b>		13.00 68006 4A13	GM-AB	10.05 66102 6G25	MN-ES
05.45 66432 4H47	MN-IS	<b>5<sup>th</sup> February</b>		13.00 66432 4A13	GM-AB
08.30 66601 6A65	OX-AB	05.45 66301 4H47	MN-IS	<b>14<sup>th</sup> February</b>	
13.00 68003 4A13	GM-AB	06.30 66250 6A32	MN-AB	05.45 66430 4H47	MN-IS
14.20 66060 6D61	RI-GM	13.00 68006 4A13	GM-AB	10.05 66067 6A32	MN-AB
<b>27<sup>th</sup> January</b>		13.30 66156 6S36	DS-GM	13.00 66432 4A13	GM-AB
05.45 66432 4H47	MN-IS			13.30 66086 6S36	DS-GM
13.30 66108 6S36	DS-GM				

## ADVERTISEMENT – GB Bus Group (GBBG)

Belonging to ICRS tells us you have an interest in vehicles involved in travel, whether it is to do with their design or simply number-crunching. That being the case, have you also got an interest in **buses** in the UK ? **GBBG** may already be known to you from its link with ICRS in the past, but if you haven't thought about joining us before, why not reconsider? Our annual membership subscription is **£15.60**, so why not visit our website [www.gb-bg.co.uk](http://www.gb-bg.co.uk) or write to our Secretary, Hazel Roberts, at 37 Abbey Place, Crewe CW1 4JR for further information? It could well be of benefit to you as a fellow transport enthusiast.

# RAILWAY GLOBETROTTERS

## Epic Austrian Borders 2013 – Part 1 by Ray Smith:

To become known as the “Ss” on tour, the Smiths and Seymour trains embarked on a slightly different format. Despite Germany being my favourite European country, this year it was missed out. Austria was to become the main country, going as far west as Salzburg.

In the early 2000s I had a day trip to Ljubljana in Slovenia and spent a short time on the station. I have not been back since so I suggested we crossed the border and spent a day or so there. This idea escalated and the final itinerary became Austria, dipping in and out of Hungary, Slovenia, Czech Republic and Slovakia. To get the most cops we concentrated on the large depots, missing out the smaller stabling points en route. For me, this became a very enjoyable tour.



GySEV 430 333 was renumbered from V43 333. This loco was originally MÁV V43 1130 and was severely damaged. GySEV bought withdrawn MÁV V43 1003 and the two locomotives were rebuilt into this one, Győr station, 6<sup>th</sup> April 2013



MÁV 431 163 in standard livery, Győr Depot, 6<sup>th</sup> April 2013



MÁV 478 202 has been renumbered from M47 1202, Győr Depot, 6<sup>th</sup> April 2013



MÁV 418 308 has been renumbered from M41 2308, Győr Depot, 6<sup>th</sup> April 2013

## Saturday April 6th 2013:

I had hired a car to be picked up at Vienna airport. There are no direct flights from Newcastle so I had to change in Amsterdam. Here I met John Smith (other half of the 2012 Smiths on tour). We had time to go down onto the station before our flight to Vienna. In the short time there I managed 8 cops! On arrival in Vienna we found the location of our car and waited for Derek (Seymour trains) to arrive. No time was wasted and it was a drive straight into Hungary. A quick look into Hegyeshalom. All the stored locomotives that had been there for years had finally gone. On to Gyor, our overnight stop. We



booked into our hotel, the cost very reasonable. It was room only. Asked if we wanted breakfast as it would be an extra 300 Florints, we all agreed. In sterling it was less than £1.00!



looking worse for wear and carrying its full UIC number, B shunter, 288 107 has been renumbered from M28 1007, Győr Depot, 6<sup>th</sup> April 2013



a class on its way out but still managing to get renumbered is 448 076, ex M44 076, Győr Depot, 6<sup>th</sup> April 2013

Until this year it was possible to buy a shed permit for Hungary which was valid for one year but now the 'safety elf' has stopped this and individual permits for the day and time have to be applied for with proof of railway safety course certificates produced. Bearing this in mind we spent the early evening on Gyor station before asking at the depot for permission to get round which was granted!

*right* 480 015, he new class 480s were built with these numbers and never carried an old number Győr, 6<sup>th</sup> April 2013



Hungary has been renumbering their locomotives and this all added interest to the visit.



diesel railcar once simply known as Bzmtot 267 now carries its new identity, 54 29 267 Győr, 6<sup>th</sup> April 2013



431 282 and 431 279,  
Celldömölk Depot, 7<sup>th</sup> April 2013



even my favourite class M62s, widespread  
across eastern Europe, have been renumbered.  
628 308 (M62 308) heads 628 313 and 628 309  
Celldömölk Depot, 7<sup>th</sup> April 2013

### Sunday April 7th 2013:

After another quick look at Gyor depot we continued to Celldömölk. Permission granted. A good selection of locomotives and railcars. The depot is adjacent to the station where two steam locomotives are plinthed. Szombathely was next. Our last shed in Hungary. Once again we were allowed round. Plenty to see.



not yet renumbered, M28 1013,  
Celldömölk Depot, 7<sup>th</sup> April 2013



clearly numbered 478 333 in sequence should  
have been ex M47 1333, however, as the M47s  
only went up to M47 1328 I am not sure what  
this was, Celldömölk Depot, 7<sup>th</sup> April 2013



2-4-2T 275 052,  
Celldömölk Depot, 7<sup>th</sup> April 2013





4-8-0 424 129,  
Celldömölk Depot, 7<sup>th</sup> April 2013



GySEV diesel unit 247 508 is about to depart  
Szombathely, 7<sup>th</sup> April 2013



Ex M62 301 now 628 301,  
Szombathely Depot, 7<sup>th</sup> April 2013



M41 2102 still with its original number at a small  
works at the other end of the yard from  
Szombathely Depot, 7<sup>th</sup> April 2013



408 203 ex M40 203,  
Szombathely Depot, 7<sup>th</sup> April 2013

photos by Ray Smith (to be cont)

# LIGHT RAIL & METRO NEWS

**Metrolink:** *the following information is kindly provided by Geoff Hope.*

In the period between November 10<sup>th</sup> 2014 & January 4<sup>th</sup> 2015 just under 3000 fines were issued at key hot spots mainly in the city centre. The number of offenders included 390 warnings to youth fare dodgers for their first offence. From December 8<sup>th</sup> 2014 to January 4<sup>th</sup> 2015 an increase of 50,000 tickets were checked compared to the previous month.

Since November 25<sup>th</sup> 2014 more than 12 cars have finished up on the tram tracks, half of which were on the Airport line. To try to curtail the number of cars straying on to tram tracks an alternative sign has been proposed. It will be a standard 'No Entry' sign with a plate stating 'Except Trams' similar to the sign showing 'Except Buses' which is nationally recognised.

After twelve months closure the Victoria tram stop reopened to through services on the 21<sup>st</sup> February. The Bury and Rochdale services stopping at one of the two island platforms, the second island platform is still being constructed and not expected to open until the Second City Crossing (SCC) is completed. The Bury - Abraham Moss shuttle has ceased and replaced by a Bury - Ethiad Campus service. This is the first time in 12 months that a through service has connected Victoria / Piccadilly with the Bury - Altrincham service giving a six minute interval service to Manchester. The Ashton - Eccles service will continue to operate as present, prior to the Victoria closure the Ashton service ran to Bury.

During the last few days of closure of Victoria the single line to Shudehill was doubled. The track layout changed outside Victoria to accommodate the spur to Exchange Square, being part of the SCC. The first stage of the refurbishment of Market Street stop started by removing the bus style shelters, removing destination indicators, resetting platform edges and tarmacing the surface of the platform. The second stage of the refurbishment in spring will be erecting a larger type shelter or possibly a canopy similar to the Piccadilly Gardens stop to give better protection to passengers, with a new improved York stone paving to give a similar finish as the Deansgate - Castlefield stop. During the two stages of the refurbishment of the stop there will be no protection from the weather.

Nine trams have been fitted out with ice breaker pantographs based at two Depots as follows:

3004/005/051/055 - Queens Road Depot

3014/016/017/021/032 - Old Trafford Depot

3013 returned to public service in early February after nearly 2 years following a collision on the Eccles line, having first been cannibalised for spares before being rebuilt (see photo right taken on the 23<sup>rd</sup> February 2015).

3087 has already been repaired after accident damage in December 2014 on the Airport line and was seen in service on the 6<sup>th</sup> February.

3094 delivered to Queens Road Depot on the 17<sup>th</sup> January was seen in service on the Airport line on the 31<sup>st</sup> January.

3095 was delivered to Queens Road Depot on the 21<sup>st</sup> February.



## Observations –25<sup>th</sup> February 2015

### Cornbrook (12.30-14.00):

3001/003/006/008/010/021/037/044/045/054/058/061-064/066/068/069/071-076/078-080/083-88/090-092/094

**Not in service:** 3029/060.



**Double trams on Bury-Altrincham service:**

3002+3031, 3007+3019, 3012+3036, 3016+3041, 3017+3040, 3022+3056, 3024+3043, 3026+3042, 3034+3055, 3048+3059.

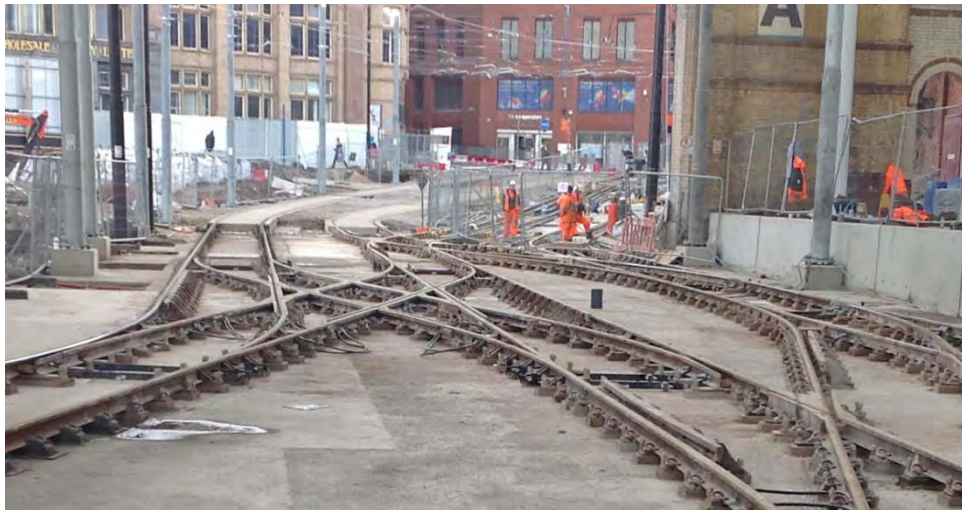
**Double trams on Rochdale-East Didsbury service:**

3004+3011, 3015+3039, 3020+3053, 3023+3033, 3030+3032, 3038+3057, 3070+3081.

**Piccadilly Gardens - Victoria, Bury - Ethiad Campus service:** 3018/025/027/035/050-052.

**Queens Road Depot (15.20-15.25):** 1003/027/028, 3014/046/047/049 + 4 unidentified trams.

**Trams not seen or unidentified:** 3005/009/013/028/065/067/077/082/089/093



*above replacement track with new spur to Exchange Square on the right  
Manchester Victoria, 23<sup>rd</sup> February 2015 (Geoff Hope)*

Mike Rumens had a day trip on the 12<sup>th</sup> February 2015 to see the Manchester trams:

**Piccadilly - Old Trafford Depot:** 2001, 3035/3064/3090

**Old Trafford - Cornbrook (12.50-14.10)**

**Queens Road Depot:** 1003, 3023/024/055 and wks 1027/028

**Piccadilly:** 3001-003/006/008-016/018-022/025-033/036-049/052/054/056-059/061/062/066/067/  
069-071/073-076/078-080/082-089/091/092/094 Total seen during the day was 72

**London Underground:**

The first District Line 'D' stock has been withdrawn from service and delivered to Long Marston for eventual conversion as a trail DMU by Vivarail. The cars involved are 7058 + 17058 + 8058 and 7510 + 17510 + 7511.

**Midland Metro:**

During the first week in February the Midland Metro depot at Wednesbury was officially opened after completion of the expansion plan costing £13.8 million. Completed in 2013 the first part was the construction of a testing and commissioning shed plus additional trackwork and overhead electrification providing room to stable 24 trams. The second part saw an extension of the existing maintenance shed by 42 metres with new offices and storage space. Upgrading has been made to some electrical substations and a new substation has been built at West Bromwich.

On 23<sup>rd</sup> January Urbo 3 No.34 was the latest new tram to arrive, leaving just Nos.35 & 36 to be delivered to complete the fleet.

Due to unforeseen engineering problems the line between The Royal and Wolverhampton remains closed. The work to renew the track should be completed in March thus taking about 6 months instead of the predicted 12 weeks.

# FREIGHT MATTERS

*To allow members to keep their copy **UK Wagons** as up to date as possible, changes are provided via this spot every month. Please let Trevor Roots know if you have any amendments or wish pass on any other helpful wagon information, contact details on page 2.*

**UK Wagons 2015** has been released. It has been totally updated and overhauled to include new stock and reflect the numerous scrapings with hundreds of additions and deletions. As mentioned last month there have been so many changes it was impossible to list them to update the 2014 book...best just buy the new book !!!

**Out of Store:** Thanks to Mike Rumens for reporting the following wagons out and about:  
13710, 500004/17/28/32-34/40/60, 550043, 81.70.4908.089-5/123-2 – not shown in 2015 book.

**Converted:** IFA Twin Bogie Container Flat to Car Carrier 33.87.4908.604-1/612-4/625-6/632-2 - all included in the 2015 book.



above 33.87.4908.632-2 Eastleigh Works 24<sup>th</sup> February 2015 (Carl Watson)

**Preserved:** HAA 354966 has been preserved by a private individual and has been moved to Barrow Hill Roundhouse with 355798 reported last month which was bought by the MGR Wagon Preservation Appeal.

## FREIGHT NEWS

**HOA 320054** is the first to receive a livery of DBS red as has **JGA 19232**.

DRS trialled Cl.68s in place of DBS Cl.92s on the southern Daventry – Mossend section of the Tesco intermodal flow to Inverness on the 6<sup>th</sup> February 2015 when 68007 + 68004 were used.

A new container terminal, the Doncaster iPort has gained planning permission and is to be built at Rossington, south of Doncaster alongside the ECML near the M180.



above hauled by 66754, JGA 17323 in blue livery (note former livery on 17324 to the right  
Tonbridge, 13.30 19<sup>th</sup> February 2015 (Colin James)



### OTP News:

SWTs MPV DR 98914 + DR 98964 has been named '*Dick Preston*' at Eastleigh Works on the 27<sup>th</sup> February. The photos below were taken on the 27<sup>th</sup> February (top) and the 1<sup>st</sup> March (bottom). It also had its cabs re-liveried in orange (included in 2015 book). There are nameplates on all four cabsides.



# STOCK CHANGES

*It is hoped that all major changes recorded below will help you keep the **UK Combine, Pocket Book** and **Name Directory** up to date, (numerous pool code changes will not be recorded). In order to compile as accurate and up to date list as possible, can members please pass on their observations, particularly name changes and multiple unit reformations to the editor, **Trevor Roots**. Where possible photos of new nameplates will be included as and when a suitable photo is sourced from members.*

## Misc. News:

The 5 car Desiro EMUs on order (due 2017-18) for SWT are to designated CI.707

321411-417 are to transfer north from LMT to ScotRail later in 2015.

CI.92s allocated to the Caledonian Sleeper services are 92014/018/023/033 in pool GBSL. A further three, 92010/032/044 are allocated to pool GBST for both Sleeper and Channel Tunnel freight.

90034 stripped of its DRS decals has been hired to Abellio Greater Anglia (AGA).

317709 & 317719 are back in service with AGA after a period of storage.

89001 is to be restored to working order from the profits gained from the Electric Traction Ltd (ETL) hire contract (see **FRANCHISE NEWS**)..

## New:

**EMUS:** (\* on test)

387123\* 387124\* 387125\* 387126\*

## Re-formed & Re-Numbered:

**EMUs:** (CI.378 & 458 lengthened to 5 cars)

8020 to 455820 includes 74401 from 460001

**Transferred:** (\* yet to happen)

## Locos:

01529 HE to WEN

27066 DFR to BH 86401 WN to LR

37175/37219 RU to BH

2-6-2T 4588 DVR to TM

0-6-2T 5619 n/k to FMW

2-8-0 8274 GWR to GCN

## Names:

### New:

08644

*Laira Diesel Depot 50 Years*

*1962 - 2012*

81025

*The Countess of York*

DR 98914

*Dick Preston*

DR 98964

*Dick Preston*

### De-named:

66002

*Lafarge Quorn*

90043

*Freightliner Coatbridge*

81025

*Valiant*

# NEW STOCK



first working photo of 68001 other than a distant shot on Carlisle Kingmoor Depot in December 2014 issue, Aldridge, 18<sup>th</sup> February (Ken Bull)





to further complete illustrating the 10 x 350/3s now in regular service with London Midland Trains, here is a view of another of the remaining 7 not previously shown (350371 appeared in the July 2014 issue & 350370/375/376 in the February 2015 issue)

*left* 350368  
Nuneaton 8<sup>th</sup> January 2015  
(James Holloway)

re-built 73961 (73209) +  
73962 (73204)

Tonbridge West Yard  
*right* 28<sup>th</sup> February 2015  
(David Doulton)

*below* 19<sup>th</sup> February 2015  
(Colin James)





four further GBRf  
Cl.66/7s  
(still 66760/61/67/68/  
70/71/72 to illustrate)

*left & below*  
66764 & 66754  
Tonbridge,  
19<sup>th</sup> February 2015  
(Colin James)

*below*  
66769 Whittlesey,  
17<sup>th</sup> February 2015  
(Colin Pottle)

*bottom*  
66763 Eastleigh,  
14.15 8<sup>th</sup> February 2015  
(Norman Smith)





# LIVERIES

*This section will endeavour to show all new liveries / variations or those existing ones where not carried on the stock before. Liveries that become 'extinct' will also be covered. As with names, it may take a while after the livery application before a photo is sourced from members.*



remarkably apart from the dirty RHTT view at Tonbridge in the December 2014 issue,  
we have never featured 66720 in its rainbow livery (*I've not seen it yet either*)  
and fortunately have photos of both sides both taken at Eastleigh,  
above 22<sup>nd</sup> February 2015 (Norman Smith) below 21<sup>st</sup> February 2015 (Andrew Buckley)



390002 (69202) with another Virgin promotional livery, Nuneaton 11<sup>th</sup> February 2015 (Mike Rumens)



repainted 55022 masquerading as 55003 'Meld' on 5D15 Glasgow Works - Shields Road, Springburn, 6<sup>th</sup> February 2015 (Bill Wilson)  
compare with p25 of the Jan issue



*above*  
90034 with of DRS branding replaced by DBS sticker, Stratford, 11<sup>th</sup> February 2015 (Derek Everson)



*left*  
91124 the first in the striking new VTEC livery, King's Cross, 11.00 to Edinburgh, 2<sup>nd</sup> March 2015 (Michael Hayman)



# ICRS SALES

We have now published 10 books since 2009, 7 of which are in print and available or due for imminent release (see below). The latest to be released is **UKRS04 UK Name Directory**.

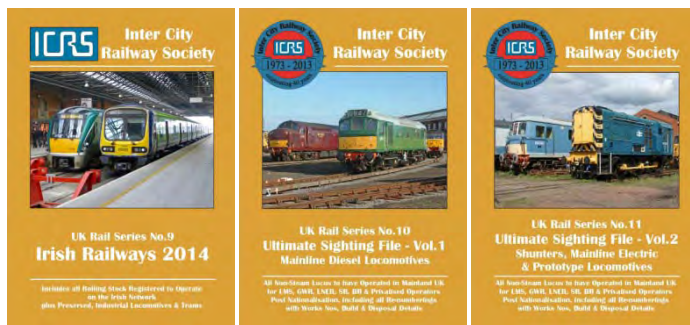
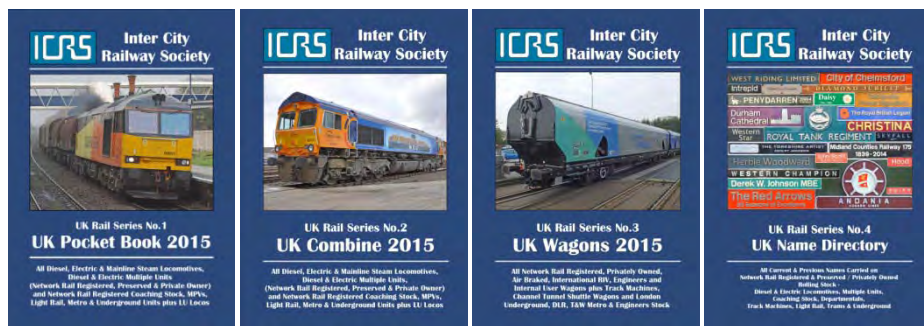
Books can be ordered either:

online via PayPal at [www.intercityrailwaysociety.org](http://www.intercityrailwaysociety.org)

or by post from (please make cheque / PO payable to ICRS)

**Carl Watson, ICRS Publications, 14, Partridge Gardens, Waterlooville, Hampshire PO8 9XG**

All books, except **UKRS01 Pocket Book**, are A5 wire bound printed on 90gm paper with plastic coated covers allowing them to be laid flat.



**BOOKS:** (all Members receive up to 30% discount on ICRS books)

BOOKS: (all Members receive up to 30% discount on ICRS books)				Prices	
Titles:			updated to	Member	Non Member
New:					
UKRS01	UK Pocket Book 2015	IN STOCK	(1 <sup>st</sup> Jan15)	£7.50	£10.50
UKRS02A	UK Combine 2015	IN STOCK	(1 <sup>st</sup> Jan15)	£12.00	£16.50
UKRS03	UK Wagons 2015	IN STOCK	(23 <sup>rd</sup> Feb15)	£9.50	£13.50
UKRS04	UK Name Directory	IN STOCK	(1 <sup>st</sup> Dec14)	£10.50	£14.50
Others:					
UKRS09	Irish Railways 2014		(1 <sup>st</sup> Apr14)	£6.50	£8.99
UKRS10	Ultimate Sighting File Vol.1 – Mainline Diesel Locos		(27 <sup>th</sup> Sep13)	£10.00	£13.99
UKRS11	Ultimate Sighting File Vol.2 – Shunters, Mainline Electric & Prototype Locos		(27 <sup>th</sup> Sep13)	£8.00	£10.99

## SUNDRIES:

Pocket Book cover		£1.50	£2.50
TRACKS A5 Cordex binder (takes 12 issues @ 48 or 64 pages – 2014 onwards) LARGE		£7.50	£9.99
TRACKS A5 Cordex binder (takes 12 issues @ 32 or 40 pages – 2011-13) MEDIUM		£7.50	£9.99
White Polo Shirts SMALL / MEDIUM / LARGE / XL / XXL		£18.00	£25.00