

TRACKS



Inter City Railway Society
October 2015



Inter City Railway Society

founded 1973

www.intercityrailwaysociety.org

Volume 43 No.10

Issue 514

October 2015

The content of the magazine is the copyright of the Society
No part of this magazine may be reproduced without prior permission of the copyright holder

President:	Simon Mutton	(01603 715701)
	Coppercoin, 12 Blofield Corner Rd, Blofield, Norwich, Norfolk NR13 4RT	
Chairman:	Carl Watson - chairman@intercityrailwaysociety.org	Mob (07403 040533)
	14, Partridge Gardens, Waterlooville, Hampshire PO8 9XG	
Treasurer:	Peter Britcliffe - treasurer@intercityrailwaysociety.org	(01429 234180)
	9 Voltigeur Drive, Hart, Hartlepool TS27 3BS	
Membership Sec:	Trevor Roots - membership@intercityrailwaysociety.org	(01466 760724)
	Mill of Botary, Cairnie, Huntly, Aberdeenshire AB54 4UD	Mob (07765 337700)
Assistant:	Christine Field	
Secretary:	Stuart Moore - secretary@intercityrailwaysociety.org	(01603 714735)
	64 Blofield Corner Rd, Blofield, Norwich, Norfolk NR13 4SA	
Events:	Louise Watson - events@intercityrailwaysociety.org	Mob (07921 587271)
	14, Partridge Gardens, Waterlooville, Hampshire PO8 9XG	
Magazine:		
Editor:	Trevor Roots - editor@intercityrailwaysociety.org	
	Sightings: James Holloway - sightings@intercityrailwaysociety.org	(0121 744 2351)
	246 Longmore Road, Shirley, Solihull B90 3ES	
	Photo Database: John Barton	(0121 770 2205)
Website:		
Manager:	Trevor Roots - website@intercityrailwaysociety.org	(01466 760724)
	Mill of Botary, Cairnie, Huntly, Aberdeenshire AB54 4UD	Mob (07765 337700)
Yahoo Administrator:	Steve Revill	
Books:		
Publications Manager:	Carl Watson - publications@intercityrailwaysociety.org	
Publications Team:	Trevor Roots / Carl Watson / Eddie Rathmill / Lee Mason	

Contents:

Officials Contact List.....	2
Society Notice Board.....	3-6
Events.....	6
ICRS Sales	64
Current News / Sightings:	
Franchise / NR News	10
Freight Matters.....	56
Stirling & Gloucester Sightings	35-36
Infrastructure News	38-41
Light Rail & Metro News	47-49
Liveries	60-63
Damaged Stock / Transfers	58-59
Out & About Sightings	24-28
Stock Changes.....	57-58
Traffic & Traction News	16-23

Feature Articles:

Borders Railway.....	29-34
Eastleigh Works Report.....	8-10
Preservation:	
Galas	42-46
News.....	11-15
Photo Spot	7
Railway Globetrotters.....	50-55
Ramblings of a Rail Enthusiast.....	10
RHTT News	37
Useful Websites.....	10

Front Cover Photo:

Having just departed Dereham and passed through Norwich Road level crossing, Cl.101 DMUs 51499 + 51226 (neither car is numbered) are approaching Neatherd Road level crossing on the 11.20 shuttle along the northern extension to Hoe during the Mid Norfolk Railway Autumn Diesel Gala, 13th September 2015

£2.50 where sold separately

Printed & distributed in the UK by Henry Ling Limited, at the Dorset Press, Dorchester DT1 1HD

SOCIETY NOTICE BOARD

Editor's / Membership Secretary's Comments:

Apologies for the delayed release of this issue as apart from the workload issues highlighted below I have had 16 days away in September on family business, involving two tiring round trips to the south coast ! We also had clear blue skies for the first time this year and a week of warm dry weather up here at the end of the month, the first since Easter !! Consequently with an acre of grass that needed mowing (more like haying) that had not been touched for a month that took precedence as did a few other maintenance tasks plus a £10 ScotRail Club50 offer, to be used prior to end of September, which we used to head over to the Kyle of Lochalsh. Added to this Chris's sister went into hospital at the end of the month in Brighton culminating in a major operation on the 5th October, so that has been a worry (not over yet) especially as we are over 600 miles away.

Since August 2009 I have combined the roles of Editor and Membership Secretary but the increasing demands of both these major offices of the Society over the last couple of years now require that each be done separately. Back then membership was 650, now hovering around 1000 and **TRACKS** was 28 pages. In fact just under half the current membership has not known anyone else do either role. Therefore after much agonising I am stepping down from the role of Membership Secretary, which I have enjoyed, not only because of the extra workload preventing any sensible domestic life outside ICRS, but the effects both jobs are having on my health. Apart from the sedentary nature of sitting at a computer for hours on end, the workload is so much now that my eyes are suffering. The increasing number of **TRACKS** contributions / queries and membership admin, exacerbated by the increasing struggle to get members to respond, are severely taxing my poor grey cells, hence the increasingly annoying errors !! During my time at the helm the Society has gone to the next level pushing the membership up by 35%, so hopefully a new face can carry that on. Please see the advert below which sadly does preclude any willing applicants who do **NOT** have a computer or can fluently use email. Hopefully there is another willing conscientious volunteer out there who has some spare time and who would like to be an essential and rewarding part of a still growing Society. The amount of hours involved varies throughout the month and from month to month and involves dealing with new applications, renewals, contacting members / answering members queries, maintaining a database, and ideally you will need to check daily both our online bank accounts, PayPal and Lloyds (to which you will be given access). Allowing 15 mins per member per year on average, approx 20 hours per month (this varies for the different types) plus 3 hours per month to complete the end of month database and check bank accounts, then the hours required are roughly 23 hours per month. I actually do more hours but I will continue to do some tasks associated with the role (see below). The ideal applicant would be a retired member as has been the case for the last 16 years except for a short stint by Mark Richards who found it was very difficult to combine with a full time job, but if you think you can manage it please apply.

URGENTLY REQUIRED MEMBERSHIP SECRETARY

**PLEASE CONTACT TREVOR ROOTS IN THE FIRST INSTANCE FOR DETAILS & TO DISCUSS,
HOWEVER THE BASIC REQUIREMENTS ARE:**

**COMPUTER LITERATE ESPECIALLY WITH EMAIL, MS EXCEL & WORD AND
IDEALLY HAVE A DESKTOP PC OR LAPTOP AS A MINIMUM,
A PRINTER AND A LANDLINE TELEPHONE
ONGOING TIME NEEDED THROUGHOUT THE YEAR, AVERAGE 23 HRS PER MONTH,
though most of the work is in the second half of the month following release of **TRACKS****

ALL CONSUMABLES ARE PROVIDED / PAID FOR BY THE SOCIETY

With changes to subscription rates, size of **TRACKS** etc having been settled now for the foreseeable future, all the extra work I've done in recent years over and above the basic admin will hopefully not now be an extra burden to my successor....mind you the excel spreadsheet is a work of art !! To

further help my successor, all those remaining members with bank standing orders for membership renewal have been contacted to amend them in line with the revised rates so if you haven't yet replied, please do so asap.

To really help the new incumbent there are some thorny issues that once again need addressing, which I've repeated ad nauseum, **PLEASE** renew on time as many members are still not renewing by your due date. It is in **Membership Matters** every month and clearly states it on the **TRACKS** address carrier sheet but the number of members not renewing on time is now running at 50%. It is also very frustrating emailing and leaving telephone / text messages and getting no response, still nothing from 20 members contacted on the 28th September... so much for technology saving time !! This problem seems to have got much worse in the last couple of years and considering that membership is still subsidised it is unacceptable that members must be chased to renew. It would be very easy to just delete anyone who fails to respond within a month following the expiry date and remove them from the **TRACKS** mailing list. But from experience I know that many just genuinely forget and therefore the renewal suddenly comes in meaning **TRACKS** then has to be sent out manually and at extra cost (83p more), so in the end that is why I chase up renewals. Please do not wait to send a cheque at the end of the month as that doesn't allow for postal delays. Also please use BACS if you can as it saves you money and time for all. Technology also seems to defeat some members using PayPal, which if you are going to use to renew, which costs the Society anyway, please select the correct option. Too many fill out a new application which can be confusing. If you intend to switch membership type the Renewal option allows you to do this. Simple message **PLEASE READ** the notes on the website !! It isn't a bad thing if everyone reads the Membership Matters notes below as they contain important info and do get amended from time to time. One last issue is please remember to notify us if you change your email, telephone numbers or if you change your address, possibly involving the first two.

To help ease some of the workload, the new incumbent does not need to take on any design work involved in forms etc, which I will continue to do, as this is consistent with the overall corporate identity involving **TRACKS**, books, website, order forms etc.

In addition I will maintain doing the complicated mailing lists for **TRACKS** each month based on the end of month membership list and makes sense keeping it within the editor role.

Having relieved myself of the Membership Secretary role I should eventually be able to concentrate on **TRACKS** and get ahead of myself with articles and scanning thousands of images in the ICRS archive and loaned by others, especially a long suffering Dave Spencer !! I will get them back to you. However with normal editing taking up about 50 hours a month the time may come when that is too much.

With the RHTT season starting hopefully as with previous years members can get out and record all the various workings. The leaves are certainly falling up here as is the rain now.

Errata – September 2015:

The photo of 60002 on p.12 should have been credited to Darren Twelves as should that of 66568 on p.16, 66200 on p.17 and 08799 on p.18 with the credit in **Magazine Contributors** to Darren Twelves not Darren Stuart. Below the photos bottom of p.55 the date should read 17th July not September.

Membership Matters:

Subscriptions:

Standard Membership: Annual - £17.50, Five year - £80.00 (saving £7.50 against annual rate)

eMembership: Annual - £16.00, Five year - £75.00

NB. Having been held for 6 years, the **Standard Membership** rates rose modestly from 1st May 2015 to help cover increased costs of production / delivery of **TRACKS** and the 33% increase in size to 64 pages. **TRACKS** has actually increased 228% since the rate was originally set in 2009 as it was 28 pages printed in black & white !! Both paper and postal costs have risen considerably over recent years. Though the books have subsidised **TRACKS** since 2011 and will continue to do so, the deficit gap between income from the **Standard Membership** annual rate and production / distribution costs will still be £0.98. The cost of sending membership cards and general admin raise this much higher.

ICRS Membership gives you:

- **TRACKS** a high quality full colour 64 page monthly magazine - covering all aspects of railways, posted with Standard Membership or emailed as a pdf with eMembership.

- up to 30% discount on all ICRS books (7 currently available).
- occasional members only visits to railway facilities.
- the latest issue of **TRACKS** emailed (on request) 10 days prior to receiving printed version.
- an informative website, with access and indexes to previous issues of the magazine.
- 10% discount on Ian Allan books (direct sales from IA only).

New Members: (* ex-members re-joined)

Brian Bentley (Oxted), Henry Bond (Woodbridge), David Brown (Stockport), Andy Deane (Bristol), Benjamin Deane (Bristol), Sam Deane (London), Donald Miller (Coventry), Simon Payne (Grays), David Rowe (Stansted), Rod Warner (Pontypridd) - a warm welcome to you all.

Membership Renewal: When your membership is due for renewal this will be indicated along the bottom of the **TRACKS** address carrier sheet with your expiry date above your name. **Therefore please check your address carrier sheet with your copy of TRACKS...before you dispose of it.** The reverse of the carrier sheet will be printed with a Renewal form, which can be returned or not, depending on the method of payment (see below). If no renewal is forthcoming after a Reminder form and one month after your expiry date then your membership will be deemed to have lapsed. **Please make sure you and provide a telephone contact number. If you are ex-directory, don't worry as it will not be revealed to any third parties but it is important that we have a contact number other than by post, which is a costly way to communicate and not covered by the membership fee.** As a helpful 'reminder', members who have set up a bank standing order will have a note to that effect on the front of the carrier sheet but no renewal form on the reverse. Hopefully then no one will renew twice, as has happened!! **PLEASE RENEW asap preferably by the due date, unless you state a reason for the delay. Standard Members are given a short period of grace to allow post to arrive but if paying by BACS there is no reason to delay as the membership for eMembers, by its very nature, lapses on the end of month due date. If you are not renewing please have the courtesy to say so.**

Methods of Payment: **Please note we cannot accept credit card payments over the telephone.**

Internet Banking (BACS) / Standing Order: This is the preferred most cost effective, secure and quickest way of paying, for you and the Society and ensures we get the full amount. Bank details will be included on your renewal form.

Cheque or Postal Order: Please make payable to ICRS and return your remittance with the form to: Trevor Roots (Membership Secretary) ICRS Membership Renewal, Mill of Botary, Cairnie, Huntly, Aberdeenshire AB54 4UD

PayPal: Pay by credit card or debit card via PayPal on the website, however this incurs a cost to the Society (currently £0.80 for £17.50, £0.74 for £16, £2.92 for £80.00 and £2.75 for £75.00). You do not need to have your own account, especially if underage but **PLEASE** read instructions on providing information on yourself if the applicant is not the PayPal account holder.

Please provide your first name and a landline telephone number, whether joining or renewing and your email. If you renew in the first week of the month, whilst **TRACKS** is at the printers, you may receive a Renewal / Reminder form but do not worry as the admin process will naturally see things cross in the post. Please also note that cheques are not presented to the bank until the first week of the following month. As well as receiving a new card, renewals will be acknowledged where possible by email.

NB. When using PayPal, please read and follow the instructions on the relevant web page.

Membership Cards: Your membership is valid until the end of month as shown by the first two numbers. For those who joined from mid 2009, the second two numbers are the year. Cards will be sent as soon as practicable following your renewal, separate from **TRACKS** distribution. No card is sent to international **eMembers**.

TRACKS Magazine:

If you so request, the very latest issue of **TRACKS** will be emailed as a pdf when it goes off to the printers so you will get it 'hot off the press' 10 days before you receive the printed version. That means you have the latest news, some within days of the event occurring. Please email the editor, Trevor Roots at editor@intercityrailwaysociety.org to receive the latest issue by email in addition to the printed version. Similarly the last 11 months are also available by email, but only to members. With this member benefit comes responsibility, please do not share **TRACKS** with non-members unless you are attempting to get them to join.

Submissions:

Articles: Any information / article on any railway related item will be most welcome for inclusion in the magazine. Your visits, travel stories or anecdotes about any part of the railway network, past or present, home or abroad can give pleasure to others or inform of places to visit. This railway hobby of ours is made all that more enjoyable by the sharing of information, knowledge and experiences. Neatly hand written submissions are perfectly acceptable, but ideally a typed document is preferable. Better still, if you have a PC and internet connection then send an email.

Photos: Good quality photographs are always welcome, preferably high res jpeg digital photographs via email (**not compressed please**), but prints are acceptable. Please send an SAE if you wish them returned. Please include full contact details with any submissions, including your first name.

The latest date for articles / info for the **October 2015** issue is **Monday 26th October 2015** with delivery to members after **Friday 13th November 2015**
please check the **TRACKS** page on the website for date of posting from the printers

Magazine Distribution: **TRACKS** is distributed direct from the printers to members in a clear plastic wrapping with an address carrier sheet (reverse printed with a Renewal / Reminder form if appropriate). If any member fails to receive their copy after one week from the above estimated delivery date then please contact the **editor**.

Magazine Contributors: (* new this month) Thanks to **Chris Addoo, David Berg, Mike Brook, Benji & Sam Deane*, Brian Derricote, Martin Evans, Derek Everson, Iain Gardiner, Robert Hawker, Michael Hayman, James Holloway, Geoff Hope, Nigel Hoskins, Stuart Nye, Keith Partlow, Gareth Patterson, Colin Pidgeon, Colin Pottle, Phil Quantock, Mike Rumens, David Smart, Norman Smith, Ray Smith, Derek Sneddon, Darren Twelves, Paul Sumpter, Roger Thomas, Peter Trowbridge, Malcolm Wallace, David Walton, Carl Watson, David Williams & Trevor Roots**. We are sorry if anyone has been missed. Photos not credited in the caption or within the article are by **Trevor Roots**.

Website:

The new re-designed website was launched on the 17th May 2014. **Login details are no longer required** to access previous issues of **TRACKS** (Dec 2006 to date) and new pages have been added listing articles appearing in these issues. However the last 12 months issues (on a rolling basis) are available and can be emailed as pdfs to members on request from the editor (see **Magazine** above). Email Trevor Roots at website@intercityrailwaysociety.org if you have any queries or suggestions.

Flickr Photo Gallery: www.flickr.com/photos/intercity-railway-society/.

We have a photo gallery on **Flickr** and all photos submitted for inclusion in **TRACKS** will, time permitting, be added to the gallery. Please send all photos to editor@intercityrailwaysociety.org

ICRS Yahoo News Group: We have our own Yahoo News Group, established in March 2004, open to members and non-members alike to post sightings and observations, share comments and debate the current railway scene. To join visit groups.yahoo.com/group/intercityrailwaysociety/ or email Steve Revill at intercityrailwaysociety-subscribe@yahooogroups.com

FORTHCOMING EVENTS

MEMBER ONLY VISITS

DRS Crewe Gresty Bridge Depot, 14.00-15.00, 28th Nov 2015:

We have secured another visit around Gresty Bridge on the 28th November 2015 starting at 14.00 (tour is approx 1 hour), however as before, it is limited to just 25 places. With more members than this limit expected to apply, the only fair way is to allocate places by a lottery. Can all members please either email or write to Lou Watson (Events Co-ordinator) asap but at the latest by the 31st October. Written applications must be accompanied by a stamped addressed envelope. The cost will be £7 (donated to Charity) payable on the day **SO PLEASE DO NOT SEND MONEY** with your application. Anyone wishing to come as a pair will be treated as one for the draw. I am sure you will appreciate this

is the only way to proceed when so many members do not have email and would be last in a first come first served system. The 'chosen' ones will be notified as soon after 31st October as possible. In case anyone pulls out, a short reserve list will be drawn as well.

Crewe Basford Hall Yard, 13.00, 12th Dec 2015:

We have arranged a tour of Basford Hall Yard through Freightliner for Saturday 12th December 2015 starting at 13.00. Can all members please either email or write to Lou Watson (Events Co-ordinator) asap but at the latest by the 30th November and provide either an email or telephone contact to receive confirmation of your application. Written applications must be accompanied by a stamped addressed envelope. The cost will be £7 (donated to Charity) payable on the day **SO PLEASE DO NOT SEND MONEY** with your application. Details of where to meet will be notified to you by Lou. There is no limit, unless we receive an unprecedented response.

OPEN DAYS

Longsight Traincare Centre, 2017 (TBC):

It may be a long way off but Longsight Traincare Centre will be celebrating its 175th Anniversary in 2017, provisionally planned for the weekend 14-16th July. Hopefully it will be similar to Derby...watch this space.

PRESERVATION PHOTO SPOT



repainted by Peak Rail under contract Cl.101
51427 (GCR) and Cl.108 52064 (SVR),
Rowsley, PEA, 19th September 2015



EASTLEIGH WORKS REPORT

by **Norman Smith**
for the period up to 30th September 2015

Locos: 57310 brought in KXA-C BNFL 96901 for repairs before leaving light engine for Eastleigh Depot on the 2nd.

66430 entered the paint shop for new DRS livery on the 2nd.

66750 entered the paint shop for new GBRf livery on the 2nd.

56081 + 56104 arrived from Leicester Depot on the 10th, for Rail Operations Group, and took Barrier Set T2, ADB 975875/ADB 977987 for movement of LM Units between Soho Depot and Tyseley Depot.

66757 arrived on the 11th and took Barrier Set T5, 975974/975978 to Wabtec Doncaster.



73119, 28th September 2015



above 56081 t&t 56104,
10th September 2015



above
59001, 23rd September 2015

left
37604, 14th September 2015

66430 left the Works in new DRS livery on the 14th heading for Willesden Brent Yard.

37604 arrived with DVT 9701 and a Network Rail Test Train on the 14th, leaving on the 17th.

66427 arrived for a re-paint on the 15th into new DRS livery.

73962 + 73963 arrived from Tonbridge West Yard on the 18th to collect 59003, returning with 59003 leading.

47830 arrived on the 18th to collect Barriers 6376/6377 and take them to Derby Litchurch Lane.

59003 returned for repairs on the 22nd in the company of 73962 + 73963. The EDs then returned to Tonbridge West Yard.

08721 is in green primer (see photo right taken on the 22nd) having been repaired and progressively prepared for painting over recent weeks. Final putting back together is almost complete and it will head for the Paintshop soon.

66750, in new GBRf livery, left on the 23rd behind 66708 to Hoo Junction.

66722 + 66766 + 66768 arrived on the 25th. 66722 then ran light to Westbury. The latter two required minor repairs and when completed, left at the weekend.



above 57310 + KUA 96901 2nd September 2015



new liveries

above 73119, 1st October 2015
note nameplate now orange and crest on the cabside

left 66750 3rd October 2015
below 66430 14th September 2015



59001 left for Merehead on the 25th after having repairs done.

Various Colas locos have been on and off site during the month including 66848/49/50, 70801/05/06/07/10.

OTP: The Network Rail Track Renewal Train arrived on the 28th for maintenance: 641018 + DR78802, DR78812 + DR78822 + DR78832 + DR76750 + 31.70.9301.002-1.



Units: Siemens Units receiving modifications were 444007/010/029, 450562/566/568.

Wagons: Wagon Trips in/out during September were:

1/9 FL in 607047/089, 608089/090/375/456. FL out 608486/501.
3/9 FL in 97738, 608198/199. FL out 93392.
8/9 FL in 92626, 93322, 97715.8/9 FL out 607001/102, 608112/114/274/332/340/410.
DBS in 396040, 87.4375.007-3/013-1.
DBS out 996151, 87.4375.009-9/019-8/025-5, 87.4384.002-3, 80.4647.035-1, 70.4908.079-6.
10/9 FL in 608229/230.
FL out 93380, 97716/19.
15/9 DBS in 87.4384.010-6.
22/9 DBS in 70.4842.009-2/020-9, 80.2693.026-7,
87.4384.033-8.
DBS out 396040, 87.4375.013-1.
22/9 FL in 607066/118, 608293/455/468/488
608515/525/527/531
FL out 97740, 97758, 607090/131, 608089
608090/198/199/379/380/459/541.
24/9 FL out 97734/738/753/773.
29/9 FL in 607098/127, 608476/477
FL out 97715/33, 607047/089,
608229/230/375/456.
DBS out 87.4375.007-3, 87.4384.010-6

Underground:

Stored Victoria Line Underground Stock scrapped during the month: 3049/085/105/141, 4003/41.



above 3049 cab sold to
Pumphouse Walthamstow Museum,
22nd September 2015

photos by Carl Watson

USEFUL WEBSITES

An interesting website brought to my attention by Phil Quantock, check it out, not had much time to look myself

<http://www.railtables.co.uk/working-timetables/>

RAMBLINGS OF A RAIL ENTHUSIAST

In a postscript to the article in the September 2015 issue, the photo right shows the frames of 2-8-OT 4253 outside the workshop at Rolvenden (near the level crossing) on the 10th September 2015. The rest of the loco is now being worked on under a newly erected large corrugated roofed 'tent' where the boiler was shown alongside the yard.



FRANCHISE / NR NEWS

With the ongoing work into resetting NRs upgrade programme two electrification schemes are to be allowed to continue, Midland Mainline and TransPennine.

The 21st September saw an official early morning ceremony at Paddington where FGW re-branded itself as GWR with more rolling stock appearing in the dark green livery: HST set 43187 + 41146, 40715, 42300, 42579, 42351, 42299, 42361, 44040 + 43188, 166204 (previously repainted) & 166205 and 57603 & 57605. Already re-liveried was 08836. See **LIVERIES** for photos.

The EMT franchise operated by Stagecoach has retained its licence until March 2018 with a further option for a one year extension.

PRESERVATION NEWS

Andrew Briddon Collection, Peak Rail (PEA):

At most preservation sites various items of rolling stock are owned by individuals, either on behalf of the railway or as a private collection. In the latter category is Andrew Briddon and his father who have a collection of 17 ex-BR and industrial diesel shunters, 1 Wickham trolley and 3 wagons based at Peak Rail in Derbyshire. Andrew secured an agreement in 2012 to erect a maintenance shed on sidings at Darley Dale, south of the station, which became redundant when Rowsley, at the northern end of the line, became the main maintenance and storage facility. Work commenced in January 2014 on the twin track shed and the photos below taken on the 19th September 2015 show the current situation. Thirteen locos (3 inside shed) and the 3 wagons from the collection were at Darley Dale (see list below) along with 3 Peak Rail locos, an unidentified Cl.03 (inside shed) and two ex-Dutch English Electric 0-6-0DE Cl.11 lookalikes 13 HO49 [2146] and 685 [2124]. The remaining 4 locos and Wickham trolley are at other preservation sites (see list below).

Locos:	ind	Yorkshire Engine Co 0-4-0DH [2675]	on site
	ind	Yorkshire Engine Co 0-4-0DH [2679]	on site
	ind	Yorkshire Engine Co 0-6-0DH [2940]	on site
	ind	Thomas Hill 4wDH [265V]	on site
	ind	FC Hibberd 4wDM [3777]	on site inside shed
	ind	Hudswell Clarke 0-4-0DH [D1345]	on site
	ind	Hunslet 0-4-0DH [9222]	Tanfield Railway (TAN)
	ind	North British 0-6-0DH [27932]	on site
	ind	North British 0-4-0DH [27097]	on site
	ind	Brush Traction 0-6-0DE [803]	on site
	ind	Drewry 0-4-0DM WD 722229 [2184]	East Anglian Railway Museum (EAR)
	ex-BR	English Electric 0-6-0 14901 (D9524)	on site inside shed
	ex-BR	BR Swindon 93901 (D2128)	Appleby Frodingham Railway (AFP)
	ind	Sentinel 0-6-0DH [10180]	Appleby Frodingham Railway (AFP)
	ex-BR	English Electric 0-6-0 D9500	on site
	ind	Thomas Hill 4wDH [284V]	on site inside shed
	ind	Hudswell Clarke 0-6-0DM [D1186]	on site inside shed
Wickham Trolley:	6607		Embsay & Bolton Abbey Railway (EMB)
Wagons:		VBA WGB 4306 (200631)	on site
		ex-German flat	on site
		ex Midland Railway well wagon	on site



the shed looking south from Station Road level crossing (the station is behind photographer) with inside [D1186] (to the fore), [3777] & [284V] on righthand track with 14901 on the lefthand track and outside, VBA WGB 4306 (200631) leading German flat, Midland well wagon, 13 HO49 [2146] & 685 [2124]



above the shed looking north from the adjacent public footpath with 14901 on the righthand track with unidentified Cl.03 behind and [284V] on the lefthand track

left [2675]

below [2940], [D1345], D9500, [803], [2679], [27932] and [2675] in front of shed



Ecclesbourne Valley Railway (EVR):

The re-development of the former Celanese site at Spondon, Derby has resulted in the company donating surplus track to the Ecclesbourne Valley Railway (EVR). The EVR sent in a team to remove 300 yards of tracks and two sets of points which will enable the railway to expand its facilities at Wirksworth. A working weekend to install the points over the 19/20th September was used by 50 multinational students on a Railway Systems Engineering MSc course from Birmingham University to gain practical experience. The photos below show the work on the 19th September with 11 of the 13 DMUs based there on view plus the two mainline diesels 33035 and D5814. The other two DMUs 51188 + 51505 were operating a service to Duffield. Single car 79900 was at the platform on the Ravenstor shuttle (just visible over 977976 in the distant centre of photo opposite bottom).



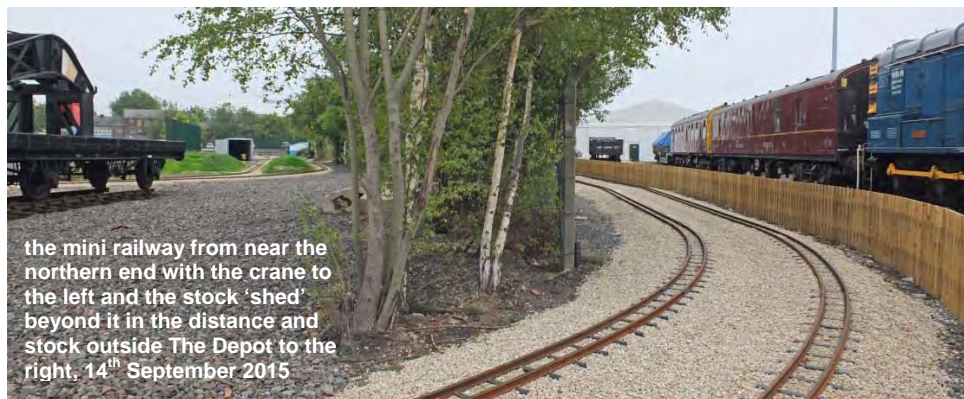
above the students can be seen working on the trackwork at Wirksworth, 19th September 2015
with DMUs *left* 79612 + 79018 + 59303 & 55006
and *right* 51073 + 50170, 977975 with, inside shed, 50253 (lefthand track) & 53599 (righthand track)



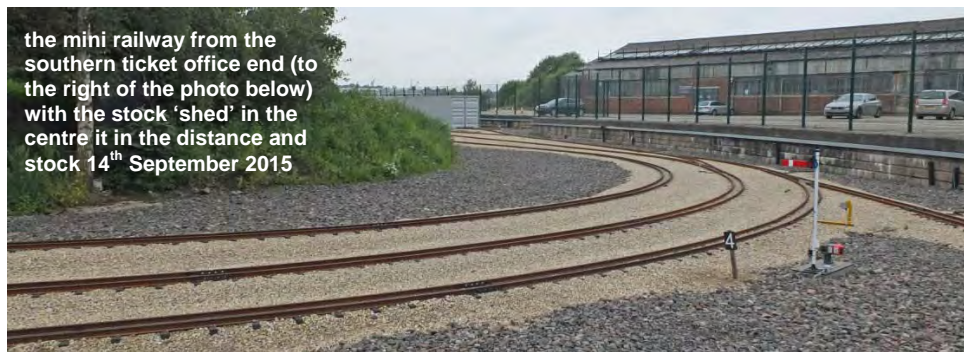
to the right DMU 55006 with
33103 and D5814 behind,
Wirksworth, 19th September 2015

NRM, York:

Several changes occurred during the summer to the rear of the Station Hall and around The Depot. The 7¼" gauge miniature railway in the South Yard at the NRM in York has been totally rebuilt and extended to form a circuit with several tracks, replacing the previous end to end track. Plinthed in the middle are full size items of rolling stock, a steam crane and an unidentified wagon. The footpath that originally extended between the railway and the playground to see stock at the rear of the Depot has been truncated preventing that view.



the mini railway from near the northern end with the crane to the left and the stock 'shed' beyond it in the distance and stock outside The Depot to the right, 14th September 2015



the mini railway from the southern ticket office end (to the right of the photo below) with the stock 'shed' in the centre it in the distance and stock 14th September 2015



CI.47 operating on the mini railway from the southern ticket office end (to the left of the photo above) with the truncated path to the left, 14th September 2015

The demonstration line platform at the rear of the Station Hall has been covered over with the Signal Box Theatre which performed the Railway Children throughout the summer, 31st July – 5th September, using the repainted 0-6-0PT 5775 as used in the film. This has however blocked the other path that allowed access up the yard to view stock (alongside the fence in the photo below) which is now all



concentrated behind The Depot. Compare the photos opposite and left / below with that taken on the 2nd May 2011 from the footpath alongside the original mini railway and almost on the same spot that the top photo opposite was taken and with the photo taken on the 11th March 2015 from a point to the left of that taken below.

The Signal Box Theatre with entrance (inset) left above, 14th September 2015



2nd May 2011



11th March 2015



In the photo of the 2nd May 2011, the demonstration line platform, alongside the siding with two Mk2 education coaches, since moved, can be seen with a Queen Mary brake van with V47 [2012] 0-4-0ST 'Teddy' conducting rides in the middle distance. The footpath between the sidings is the other side of the fence which finishes on the extreme right. At the time the stock was all to the other side of the path. The photo of the 11th March 2015 shows the demonstration line platform which is now inside The Signal Box Theatre. It has to be said that though the earlier photos were taken from footpaths the ones taken on the 14th September from similar points, were from an area not seemingly now accessible by the public. Even The Depot was closed !! Totally understandable the desire to maximise revenue but access should still be catered for, however it would appear it's now money taking concerns 2, rail enthusiasts 0.

TRAFFIC & TRACTION NEWS

August 29

66089 was seen approaching Knottingley at 10.17 on Drax PS – Milford West biomass hoppers with Knottingley Depot in the background (photo below by Mike Brook).



September 1

66120 was seen passing the now closed Hatfield Colliery on the approach to Hatfield & Stainforth at 10.49 on Scunthorpe – Eastleigh East Yard (photo below by Mike Brook).



September 2

4-6-2 34067 'Tangmere' passed Eastleigh at 11.39 on 1Z67 London Victoria - Weymouth Dorset Coast Express (photo below by Chris Addoo).



66199 on 6M39 East Usk Junction - Radlett was seen being passed by 222005 on 1C20 Sheffield - St. Pancras at Wellingborough at 08.47 (photo opposite top by Colin Pottle).



57313 t&t 57316 was seen at Edinburgh Waverley on The Statesman rail tour at 13.37 (photo below by Iain Gardiner).



60002 passed Leicester at 16.16 on Canton – Toton (photo below by Mike Rumens).



September 3

66735 was seen climbing Belstead Bank, Ipswich at 16.45 with 6A33 14.40 North Walsham - Harwich Carless refinery loaded condensate tanks (photo at end by Keith Partlow).

September 4

2-6-0 31625 now based at the Swanage railway had a weekend out at the Great Dorset Steam

Fair, Blandford Forum where it is seen being hauled around the showground by an Allely's trailer (photo below by John Bloom).



66160 was seen passing Low Gates level Crossing, Northallerton at 11.01 with loaded steels (see photo below).



70020 + 90043 dead in tow passed Ipswich at 12.40 on 06.04 Crewe Basford Hall - Felixstowe North (photo below by Keith Partlow).



September 10

Colas track machine DR 73909 'Saturn' arrives at Crewe from Oxenholme ready to move on to the depot (photo below by Martin Evans).



September 11

66757 was seen passing Grange Park on the Hertford Loop at 12.27 hauling two barrier coaches on Eastleigh - Doncaster WAGN Works (photo below by David Berg).



319376 was seen passing Sytch Lane at 13.35 on Wolverton Centre Sdgs - Allerton Depot (photo at end by Roger Thomas).

September 12

60076 + 60056 were seen at Doncaster at 10.53 (photo below by Derek Everson).



September 13

Metropolitan No1 was seen at Harrow on the Hill at 10.55 during the 'Steam on the Met' weekend of rail tours on the Watford branch (photo below by Michael Hayman).



70802 t&t 70809 passed Totnes on the 6C21 10.10 Largin - Westbury at 13.35 running 135 mins late (photo at end by Malcolm Wallace)
70807 passed Totnes on 6C22 09.10 Largin - Westbury at 11.10 running 50 mins late.

September 16

37706 with Rail Data equipment passed Swindon at 11.53 on 0Q37 Didcot TC - Bristol Parkway (photo below by Darren Twelves).



70017 + 70018 heading light south from Trafford Park at 10.31 taken from Charles Street car park, Manchester (photo below by Phil Quantock).



September 17

56104 + 56081 + D6836 on Alton - Leicester were seen approaching Wellingborough at 12.21 (photo below by Colin Pottle).



43062 t&t 43013 on 1Q52 Derby RTC - Derby was seen approaching Wellingborough at 09.52 (photo opposite top by Colin Pottle).



September 18

70014 passed Swindon at 11.22 on 4O70 Wentloog Freightliners - Southampton MCT (photo below by Colin Pidgeon).



47830 (D1645) passed Harrowden Junction at 10.40 on Leeds Balm Road - Eastleigh (see LIVERIES).

September 19

A chance encounter of 66003, 66004 & 66005 were seen together in Toton Yard with 66058 the latest DBS liveried CI.66. (see photo at end). 59003 was seen away from Eastleigh at Tonbridge West Yard.



September 20

Several rugby world cup specials were operated from Paddington - Cardiff were seen passing Swindon:

11.22 57306 t&t 57310 on 1Z17
12.54 67029 t&t 67013 on 1Z19 (photo below by Colin Pidgeon).



57306 t&t 57310 on 1Z17 London Paddington to Cardiff Central rugby world cup special was seen passing at Reading at 10.42 (photo below by Chris Addoo).



September 21

90042 on hire from FL to CS was seen stabled between duties at Edinburgh Waverley as was 67003 (see photos below).



September 22

Three consecutively numbered CI.66/9s were seen on Ipswich stabling point, 66953, 66954 & 66955 (photo below by Keith Partlow).



September 23

37425 + 37218 on 5Z29 Crewe HS - Eastleigh were seen passing Filton Abbey Wood at 13.35

with coaches M80042 + M35469 (photo below by Robert Hawker).



43187 t&t 43188 in the new GWR livery was seen passing Swindon at 10.32 (photo at end by Darren Twelves and see **LIVERIES**).

September 25

60017 was seen shunting at Swindon on 6B49 Llanwern Exchange Sidings - Swindon Stores at 13.02 (photo below by Colin Pidgeon).



37175 t&t 37421 passed Harrowden Junction at 13.44 on 1Z05 East Ham - Derby RTC (photo at end by Colin Pottle).

43013 t&t 43062 on 1X23 Salisbury - Salisbury NMT via Southampton was seen passing Millbrook at 14.06 (photo by Chris Addoo).



September 26

47854 t&t 47802 on 1Z26 0742 Whitehaven - Perth 'William Wallace Express' were seen at

Perth at 15.58 (photos below and in **LIVERIES** by Derek Sneddon).



September 28

31601 was seen passing Swindon at 10.09 with freshly overhauled CR Mk3 10274 on Bristol Barton Hill - Wembley ECS (photo below by Darren Twelves).



An unidentified 3193xx EMU on a Manchester Victoria - Liverpool Lime Street via the original L&M 1830 route, was seen at 12.08 next to Salford Central with matching buildings behind !! (photo below by Phil Quantock from the NCP New Bailey CP).



66139 was seen reversing a stone train into Hope Street sidings at 11.58, having just run round, next to Salford Central (photo opposite top by Phil Quantock from the NCP New Bailey CP).



September 29

59001 was seen passing Swindon at 14.00 on 7B12 Merehead - Wotton Bassett with a mixture of seconded HTA coal and JHA stone wagons in the consist (photo below by Colin Pidgeon).



56312 hauled 4-6-2 60163 + support coach through Longbridge at 15.28 heading from NRM, York – Bishops Lydeard, WSR (photo below by David Williams).



News from Norfolk by Stuart Moore:

September began with a change of loco on the short set.



37422 (still without DRS decals) t&t 37425 operated until the 1st September (see photo opposite top at Buckenham on 1st September) then was replaced on the 2nd September by 37419. It began operating with 37425 but this was replaced by 37405. The pair have stayed in operation on the set for the rest of the month. The summer specials ceased after the first weekend in September. However, the short set was back out on the second weekend for football traffic.

On the 3rd September 90034 operated the 13.30 Norwich to London Liverpool Street. The 90 has since returned the DBS for an exam. Due the extra 'bits' that had to be added to the DBS 90 to operate for Abellio GA no other DBS has come to replace it. Also in Norwich on the 3rd was B1 4-6-0 61306 *'Mayflower'* running from Southall to Sheringham. The loco left its support coach at Crown Point to pick up on its way back south. 61306 was watered in the yard during its lay over (see photo below).



Engineering work took place over three weekends on a section of track between Reedham Station and the Swing Bridge. For two weekends GBRF provided traction for the engineers services, on the final week no extra services ran. 66727/760/761/768 were noted at Reedham on the 11th with 66702/718/735/738/748 noted on the 17th.



66768 Reedham, 12th September 2015



66768 Reedham swing bridge with 66702 in the distance to the left, 19th September 2015

Also on the 17th NENTA ran its tour from Norwich to Carlisle with 47826 out, 47854 on the return.

Monday 21st September saw 61306 run light to Crown Point to collect its support coach before returning to Southall. Also seen was 66704 on the empty Harwich North Walsham empty Carless tanks.

57008 arrived light engine from Crewe via Willesden on 24th. This maybe the first of this year's RHTT loco's, we'll have to see!

Friday 25th September saw 66082 at the LaFarge terminal at Trowse in Norwich on an unusual service which had set off from Morton-on-Lugg the previous evening. Once the wagons had been emptied 66082 took the wagons to East Usk New Yard.

Saturday 26th saw the Northern Belle run from Norwich to Chester with 57305 and 57312. However a loco swap took place in Cheshire and 57305 was replaced with 68005. The pair were seen in Norwich the next day before running the ECS back to Crewe.



68005 t&t 57312 27th September 2015

Also noted on Sunday was 90011 on the 13.00 to London which was failed apparently because the driver couldn't get the cab door open!



above a view not featured before of FL Leeds Midland Road Depot showing from left to right
66539, 66516 (background), 66557 (undergoing maintenance) & 66606 + 66620 + 66545
1st September 2015 (Mike Brook)





319376 Sytch Lane
11th September 2015 (Roger Thomas)



37421 t&t 37175 Harrowden Jct
17th September 2015 (Colin Pottle)



43187 t&t 43188 Swindon,
23rd September 2015 (Darren Twelves)



66735 Belstead Bank, Ipswich
3rd September 2015 (Keith Partlow)

OUT & ABOUT

by James Holloway

For clarity, steam locos are now shown in red. To be more helpful for those interested in where stock was exactly, can I ask all contributors who list trip sightings over long distances, to please add all locations when submitting to James. *Please also ensure your sightings reach James a few days before the press deadline, see **SOCIETY NOTICE BOARD**...ed*

Dave Smart:

12th September:

Farrington 11.00-15.00:

319005/006/008/009/215/217/218/381/384/385
319421/426/427/431/435/436/441-445/447/449
319451/452/455/459, 377210-212/214/502/503
377506/508/511-515/519/521-523, 387101/04/07
387114/15/17/18/20/22/23-25/27/28

Malcolm Wallace:

24th August;

Stafford 12.20-18.45:

57004/302 6M56	66433 4S44	70005 0G24
57310 6Z96/97	66547 4M61	70020 4O09
66050 6M66	66572 4O29	86612/14 4M87
66079 6O42	66591 6M04	86638/38 4M54
66092 0Z98	66592 4L90	90018/19 4M25
66118 6M48	66717 4L18	90020/37
66148 6G71	66726 6L48	90041 4M88
66151 4L56	66730 4F61	90044 4M81
66419 6U77	66732 6K50	
220005/07/11/12/15/19/24/29, 221102/04-07/09/11		
221114-16/18-20/25/28/32/35/36/38/42, 325014		
350103/108/109/114/117/125/130/239/243/246		
350255/265/368/371/372/374/376, 390001/002		
390005/006/008/010/011/013/016/020/040/042		
390043/045-047/049/104/107/112/115/118/125		
390126/128/130/134/135/137/138/141/153/156		

25th August:

Stafford 08.00-15.55:

66035 6O42	66566 4M28	70019 4O49
66085 4O21	66572 4M95	70020 4O09
66102 6M44	66588 4L90	86604/22 4M54
66232 6M90	66717 4M21	86613/27 4L39
66303 4M34	66720 6G62/4F61	
66419 6Z96	66730 6G64	90018/19 4M25
66427 4S44	66742 4F68	90041 4M81
66501 4L97	68004 6U76	90044 4M45
66534 4O27	66538 4M36	
66188/66233/90020/90037 0A06		
220001/02/05/12/13/20/25/26/29/33/34, 221102-04		
221106-08/11-14/16/18/22/25-27/31/32/35/38		
325003/06/07, 350103/108/113/114/118/120/123		
350124/126/234/243/254/259/261/369/372/374/375		
350375/377, 390001/002/005/006/008-011/016/040		
390042/043/046/104/112/115/117/119/122-125/127		
390128-132/135/138/141/151/152/154/155/157		

27th August:

Eastleigh Station & Yards:

08691/904, 59204, 66003/009/017/047/050/070
66085/204/230/502/505/515/540/543/560/589/590
66594/711/743/758/847/850/954, 70001/008/015

70020/805/806, 73107/136/962/964, 158882/887
158890, 220003/04/06/10/13/20/22/23/27/34
221121/39/41, 377146, 444001/02/04-10/12/14-17
444020/22/24-26, 450005/006/011/041/083/084
450090/091/095/098/104/108/109/114/116/120
450123/124/126/546/552/559/561/563



Eastleigh Jungle...Yard with very nice box wagon planters !!!...industrial Chelsea display ?

Westbury Station and Yards:

08799, 59202, 60096, 66009/096/152/413/585/951
70803

Taunton Fairwater Yards: 66561/573

Stuart Nye:

28th September:

Birmingham New Street 12.10-12.45:

153356, 158822/824/829/830, 170505/506/508/513
170523, 220011/20/29, 221106/36, 323203/11/14
323215/18/20/40, 350115/234/237/249/257/264
390005/011/134/153

29th September:

Birmingham Snow Hill 12.10-12.50:

68013, 168218, 172211/212/214/216/220/221/333
172336/340/341/343-345, DVT 82303, cs 10272
12604/615/617/618/23

30th September:

Birmingham New Street 12.15-12.50:

158819/824/837/840, 170104/107/108/521/633
220008/11/25, 221143, 323202-04/07/11/15/20/41
323242, 350117/123/238/252/255, 390015/115/127

1st October:

Birmingham Snow Hill 12.10-12.50:

68014, 168111, 172211/213/215/218/220/222/332
172341-343/345, DVT 82309, cs 10274/12606/610
12613/619/620, Trams 25/26/28/29/31/35

2nd October:

Birmingham New Street 12.05-12.50:

158819/822/825/829, 170103/105/508/514, 220022
220024, 221113/35/39, 323202/04/09/10/12/13/15
323217/19/22/41/43, 350115/116/253/264/374
390020/050/123/137

Michael Hayman:**28th August:****Paddington:** 57604**Acton:** 66043/121/122/238/250/603**Reading:** 70001**Didcot:** 66050/058/070/139/560/719, 67006**Swindon:** 66597**Barton Hill:** 70000 *'Britannia'***Bristol Temple Meads:** 20305/308, 66107, 70810**Newport:** 66034/134/144**Cardiff Canton:** 08499, 70810**Margam:** 66121/128**Southall:** 61306, 47760**19th September:****Paddington:**34067 *'Tangmere'*, 43015/021/087/091/180/197

47746, 57306/310/602/603, 67013/29

David Walton:**9th September:****Derby 09.00-09.20:**

156405, 170109, 221126/33, 222008

Chesterfield: 66301**Doncaster 10.20-16.20:**

08669, 43206/208/239/272/274/277/290/295/299

43300/305-309/312/313/317/319/320/423/465/467

43468/480/484, 47727, 60056/076, 66079/098/100

66123/181/414/604/606/706/720/723/747/759

67012/28, 91101-03/05/06/08-10/13-16/18/20-22

91124-30/32, 142021/24/53/56/65/78/87, 144003

144006/07/11/13, 153321/32/74, 158787/791/795

158850/851/855/903/904/908/909, 170303/307

170308, 180105/09/10/12, 185107/15/26/49

220007/15/19/26/27/29/30, 221123/26/29/41

321412/416, 322481/85

Sheffield 17.05-18.00:

43301/366, 142024/42/53/71/84, 144003/04/13

158799/816/846/850/853/854/865/909, 170303

170308, 185126, 222003/011

Derby 18.30-19.00:

153308/83, 156404, 170101/107/519/522, 220004

220030, 221129, 222004

10th September:**Water Orton 09.30-16.15:**

37603, 43301/366, 56113, 60017/054, 66051/067

66085/112/124/128/131/145/156/164/177/199/200

66416/564/596/617/722/954, 68004, 170101

170103-107/109-112/114/115/117/397/398/518

170519/522/523/636-639

Benji & Sam Deane:**25th September:****Charfield 07.02:** 37218/425 1Z31**Swindon 16.46:** 60017, 66126**Acton 17.37:** 59202, 66112/121/221**Marylebone 18.15-18.55:**

68011/13, 165001/004/007/012/026/034/035

168110/112/215/216, 172101

Stratford 19.35-21.05:

19.41 90049 4L90 20.32 90045 4M89

19.52 90043 4S88 20.41 66738 4L18

19.56 90007 1P58 20.43 66082 4Z43

20.10 66718 4M02

20.51 90008 1P63

20.15 90006 1P62

21.00 66416 4L92

20.18 90001 1P61

317507/662, 321321/324/330/335/348-350/352/357

321358, 360106/112/113/114/118/120



68011 Marylebone

Euston 21.30-22.00: 86401, 90037, 390020/123**26th September:****Maze Hill 14.00:** 376007/19/20/24**London Bridge 14.15-14.30:**

59203, 66019/067, 375803/823/910/922/927

455841/845, 465005/022/167

above 59203 below 66067 t&t 66019
London Bridge**Paddington 14.50:** 165127, 166215/16**Old Oak Common 15.15:** 08836, 57307/602-604

Acton 15.17: 66142/221
Ealing Broadway 15.19: 165118/122
Willesden & Wembley 16.00-17.35:
 08617/887, D3671, 66522/572, 86213/401/702
 87001, 90042/43/48, 92033, 172005, 325001
 350111/251, 378206/214/215/223/224/226-229/231
 378234/235, 390043/130, DR73947
Harlesden 17.55: 378230
Shepherds Bush 18.05-18.45:
 47830, 92044, 375617, 377704/708, 378202/206
 378212/256
King's Cross 19.30-23.30:
 43206/272/295/296, 67008/24, 90035, 91104/05
 91108-10/21/30/32, 180113, 313040/050/059
 365504/06/07/14/22/31/41, DVTs 82200/08/13/18
 82219/22/27



67008 on ecs from an earlier rail tour

27th September:
Maze Hill 00.15 & 12.00:
 376001/05, 465047/155/176
Greenwich DLR 12.05: 35/58/60/90
London Bridge 12.15-12.50:
 59203, 455816/822/823/827/839, 465026/046/050
 465156/166/197
Tonbridge 13.40-14.10:
 375627/806/823/905, 465187/248/917/919/922/924
 465925/931, DR75410
Tonbridge West Yard 14.30-15.00:
 20901/905, 66714/765, 73136/212/961-964
Old Oak Common 16.41: 08836, 57306/307/604
Acton 16.43: 66142/221
Didcot 17.36: 66070/113/145
Stoke Gifford 19.00: 70003/016

Nigel Hoskins:

4th September:
Burton-on-Trent:

11.03 66125 4M11	WW-EA
11.07 66097 4L07	BU-Felixstowe
11.12 60100 6M57	LY-KY
11.17 66610 6G65	EA-Walsall
12.08 60040 6E54	KY-Humber
12.42 60044/66107/66177 6D44	BS-TO
12.47 66088 4M07	Felixstowe-BU
13.11 66091 6M96	MG-CY
13.12 66726 6M01	Tinsley-Bardon
14.12 66623 6M49	IM-RG
14.41 68015 6U77	MT-CE
15.10 60059 6E41	WH-LY

15.23 70018 4O55	LS-SO
15.43 66188 6E08	WV-IM
15.54 67003 1Q20	CE-DY
16.04 56078 6E07	WW-Boston

Beeston:

17.19 60092 6M00	Humber-KY
18.20 66765 6L15	TO-WI
18.46 60021 6E38	Colnbrook-LY

Leicester:

20.42 66057 6C33	MT-Radlett
20.56 66757 6O27	MT-EH

5th September:

Leicester:

10.19 66567 4L90	Lawley St-Felixstowe
10.44 66012 6F54	SF-TO
10.49 66737 4L39	Birch Coppice-Felixstowe

Melton Mowbray:

11.59 66516 4L93	CE-Felixstowe
12.55 66420 4M93	Felixstowe-CE
13.45 66954 4M87	Felixstowe-CE
13.57 66718 4L20	Hams Hall-HR
14.18 66543 4M20	Felixstowe-Lawley St
14.54 66533 4L90	Lawley St-Felixstowe
15.00 66726 4E80	Hotchley Hill-PB
15.05 66005 6Z20	Chesterton-MT
15.37 66745 4M23	Felixstowe-Hams Hall

11th September:

Leicester:

12.20 66193 6H10	Bletchley- EA
------------------	---------------

Sileby:

13.01 66131 6B30	MT-Northampton
13.03 66749 6M60	DR-MT
13.49 66752 4E83	Hotchley Hill-DR
14.26 66602 6L89	TU-West Thurrock
15.15 66752 4E83	Hotchley Hill-DR
15.43 66623 6M91	TH-EA
16.11 66030 6T20	Chesterton-MT
16.17 56081/104	TY-LR
16.29 66553 6L16	Aldwarke-WI
16.45 66732 6M26	EH-MT
17.18 66749 6L27	MT-WI
17.18 66507/956 6X08	Stapleford-Harpenden

12th September:

Acton Bridge:

10.56 66719/732 0G66	Tuebrook-CE
11.02 70007 4M45	Felixstowe-Ditton
11.28 66182 6M90	AV-CI
11.31 66772 4F68	IB-Liverpool
11.35 66018 6M44	SO-HO
11.50 92038 0Z68	CE-PO
11.53 66070 6O42	HO-SO
12.31 66419 4S55	DV-CB
12.53 70017 4K83	Garston-CE

Rugeley Trent Valley:

15.28 90048 4M93	Felixstowe-CE
15.48 66072 6H50	WN-TU
16.35 66726 6L48	Garston-Dagenham Dock

Walsall:

18.07 66168 6V45	HO-DT
------------------	-------

Bescot Stadium:

18.58 66063/085 6R06	BS-Fenny Stratford
----------------------	--------------------

13th September:

Crewe:

19.38 66719 4F66

IB-Liverpool

20.01 66434 4S45

DV-CB

14th September:**Altrincham:**

10.28 66547 6F33

Bredbury-Runcorn

10.37 66095 6H85

WR-EA

11.07 66622 6M72

WY-TU

11.24 66599 0Z46

LS-FF

12.12 66524 6J34

Runcorn-Brindle Heath

12.33 66051 6M46

Ripple Lane-EA

Rugeley Trent Valley:

15.05 86605/632 4M54

TL-CE

15.44 66070 4L56 Trafford Park-London Gateway

16.02 68015 6U77

MT-CE

16.12 70007 4L92

Ditton-Felixstowe

16.20 66717 4L18

Trafford Park-Felixstowe

17.05 66765 6K50

TO-CE

17.09 66532 4M88

Felixstowe-CE

17.19 66418 4O29

Trafford Park-SO

17.51 70002 4M61

SO-Trafford Park

18.05 86610/604 4M87 Felixstowe-Trafford Park

18.16 66726 6L48

Garston-Dagenham Dock

16.30 66957 0M46

Aldwarke-CE

Mike Brook:**25th August:****Batley 13.15-16.02:**

142028, 144022, 150140, 155342/46, 185102/03

185109/12-17/20/26/28/31/34/35/37/39/43/44

185146-49/51

26th August:**Acton Bridge 05.50-12.20:**

57307, 66107/139/303/416/434/501/510/541/545

66553/617/622/720/726/730/952, 70001/006

90018, 325008/009/013, 390008/044/046/047/049

390118/123/127-130/132/148/152/154



66303 Coatbridge – Daventry (09.26)



325008/009/013 Willesden - Warrington (09.34)



66617 Bredbury – Runcorn (11.57)



66720 Liverpool – Ironbridge PS (11.40)

29th August:**Whitley Bridge & Knottingley 09.20-09.40:**

09106, 66068/089/115/197/703/729, 144004/15/23



09106 Knottingley East Jct

1st September:**Whitley Bridge 10.25-15.10:** 66130/197**Hatfield & Stainforth 10.15-11.30:**

66120/512/615, 67028, 142019, 144003/09

158844, 170307/308, DR77802

Leeds Midland Road 12.45:

47830, 66539/577/566/606

Mike Rumens:**26th August:****Nuneaton 09.50-10.24/15.40-16.20:**66030/037/065/731, 68004, 90016, 153364
170101/107/114/521/639, 221107, 350108/112/117
390044/115/121/122/127/141/151/156**2nd September:****Nuneaton:** 153364, 170110**Leicester 14.50-18.47:**43045/050/052/058/059/064/073/081-083, 56038
56060/065/301, 60002/21, 66097/199/604/621/740
66761/763, 86235, 156497, 158810/858/866
170102/105/107/108/110/112/522/635/638
DR73908**3rd September:****Nuneaton 09.40-10.10:**66017/112, 68004, 90048/49, 153364, 170109/398
170523, 221114, 350374, 390046/050/114/119/157**4th September:****Nuneaton 17.18-17.50:**60063, 66108, 170107/117, 350119, 390046/118
390122/126**5th September:****Nuneaton 17.14-17.28:** 60092, 66717, DR73948**10th September:****Nuneaton 10.03-10.20:**

66192, 68004, 90042, 170112, 390130/148/157

Geoff Hope:**29th August:****Doncaster 08.25-13.25:**43013/062/208/251/257/274/309/311/313/314/317
43318/423/465/467/484, 66027/039/115/147/230
66301/542/593/710/749/756/761/765/771/954
67012, 91102/03/05/06/08/09/13-15/17-20/22/25
91128/29/32, 142001/13/92/93, 144001/07/09/11
144013, 153311, 158791/843/849/861/901/904
170303/307, 180101/05/07/09-11/13/14, 185110
185114/22/23/29/42, 220003/21/27, 221124/25/28
221130/41, 222022, 322483/85, DVT 82200/01/04
82206/07/09/11/13/16-18/22/23/25/26/28/30/31
DR73109/114/77904

cs 975814/984, 977984/993

977994

1st September:**Stafford 09.15-14.10:**66031/057/303/419/421/425/509/571, 67008
68013, 70017, 90018/19, 220006/07/14/20/23/24
220029/31/33, 221101-07/09/10/13-18/21/23/27/28
221135/36, 325004/06/09/12/13, 350101/106/120
350128/231/235/249/250/267/368/369/373/374
350376, 390016/039/042/046/047/049/050/103
390107/114/115/117-119/122/125/127/129/130
390132/134/137/141/151/153-155
DR73909/940/77002/98004/98008/98010**5th September:****Doncaster 08.25-13.30:**43257/290/295/296/300/302/305/306/308/311/312
43317/423/465/467/484, 60056, 66060/127/133
66188/517/618/711/716/951/952, 67012/26
91101-03/05/06/08-10/13/14/16/18/20-22/24/26-31
142011/54/65/70/86/90/93, 144002/03/06/07/13
153385, 158787/816/860, 170303/308, 180105/07
180109/10/12-14, 185118/19/33/36/37, 220004/07
220015/18/20/29/30, 221125/26, 222016, 321901
DVT 82202-09/11-16/23/25-30

DR73113/77904

12th September:**Stafford 09.15-13.30:**66018/031/070/110/182/419/434/717/772, 68008
90042/43, 220003/05/06/09/10/13/21/30, 221101
221102/04/08-13/17/18/23/25/33/34/38, 350103
350106/109/113/121/128/243/251/253/259/263
350369/371/376, 390001/005/006/009/011/013
390016/020/039/042/046/103/107/118/119
390125-129/131/132/137/138/141/154/156/157**Brian Derricote:****9th September:****Wolverhampton-Carlisle and return****07.30-10.00 & 17.10-1945:**08428, 09204, 37214, 57306/310, 66047/091/175
66192, 86632, 87035, 90039/43/44/48, 92044
156479, 158792/862, 319365**Carlisle 10.00-17.00:**37402, 57308/315, 60085/087, 66053/115/303/305
66425/426/433/548/555, 86604/612, 142060/64/68
142093, 153316/24/31/51/59, 156409/449/469/490
156505, 158793/794/848/849/872/902, 221107/10
350401/402/404/406-410, 390046/104/107/112/115
390118/119/121/123/128/129/141/154
DR73942/965242

ADVERTISEMENT – GB Bus Group (GBBG)

Belonging to ICRS tells us you have an interest in vehicles involved in travel, whether it is to do with their design or simply number-crunching. That being the case, have you also got an interest in **buses** in the UK ? **GBBG** may already be known to you from its link with ICRS in the past, but if you haven't thought about joining us before, why not reconsider? Our annual membership subscription is **£15.60**, so why not visit our website **www.gb-bg.co.uk** or write to our Secretary, Hazel Roberts, at 37 Abbey Place, Crewe CW1 4JR for further information? It could well be of benefit to you as a fellow transport enthusiast.

BORDERS RAILWAY

by Trevor Roots

The official re-opening of the northern 30 mile section of the former Waverley Route known as the Borders Railway took place on Wednesday 9th September 2015 with HM The Queen doing the honours. Sadly I was unable to witness any of the opening services but did get down to the line on the 18th September to witness normal weekday services operating along the route.



60009 with HM The Queen passing southbound north of Heriot at 12.24 with the A7 beyond and below returning north passing Thorniehill bridge coming off Borthwick bank at 14.49 with 67026 leading, 9th September 2015, (Iain Gardiner)



A4 4-6-2 60009 'Union of South Africa' t&t 67026 'Diamond Jubilee' was provided to haul the special return train from Edinburgh Waverley to Tweedbank, which stopped at Newtongrange en route for the Queen to unveil a plaque. A plaque was also unveiled at Tweedbank. The standby steam loco for 60009 was A1 4-6-2 60163 'Tornado'.



On the 8th September prior to the official opening, 60009 + 60163 were seen along with three support coaches passing Cocklawburn beach at Scremerston to the south of Berwick-Upon-Tweed at 12.49 working 5Z94 Tyne Yard - Millerhill Yard. Photo on previous page bottom by Gareth Patterson.

Prior to the public and official openings a special service using the Borders Railway liveried 170414 was run on the Saturday for Golden Ticket holders only and was marked by special events along the route. The start of public services began on the previous Sunday utilising Cl.158 & 170 DMUs.



170414 in Borders Railway livery crosses Gala Water on one of the numerous bridges along the route at 09.31 near Heriot, 9th September 2015 (Iain Gardiner)

The 6 weeks of steam hauled specials (see photo at end), mentioned in my Editors Report in the last issue, operated by ScotRail have been successful with all seats sold. It appears that they will be run again in the future though without the initial novelty, loadings may not be as good. The specials however required service trains to be cancelled due to the lack of passing loops. This means any other charters must give ScotRail 13 weeks notice in advance.



On my trip down I skipped Shawfair and the northern section and started at Eskbank where 158735 was seen departing northbound at 12.10 from the new Eskbank station in the photo above. The former station is beyond the bridge in the distance. It was now a race south to catch all the up and down services in the next 2 hours. The next stop was Gorebridge which I reached as 158739 arrived on another northbound service, departing at 12.31, see photo left



above I finally got a close up of the new Eskbank station, the car park for which is accessed from the University access road though no signs !! 18th September 2015

Onto Newtongrange next where again I was just in time to see the first of the originally allocated Cl.158s, 158701 arriving at 12.20 with a southbound service. The photo right shows the new path up to the Scottish Mining Museum and Lady Victoria Pit.

A sprint to the bridge south of the former Heriot station and I caught 158708 + 158733 at 12.53 heading northbound. I decided to then stop at the former Fountainhall station where I caught 158726 at 13.06 heading south but the wait meant I missed 158701 coming back on the non-stop service through Stow. I would have caught them both had I gone straight to Stow but I thought I didn't have time.





*left 158726 passing Fountainhall southbound at 13.06
18th September 2015*

However on arrival at Stow at 13.16, that's when I realised I had missed 158701 heading north, I did at least get a photo of the new footbridge from one of only two new stations with two platforms. Parking seemed a bit of a problem here already as the limited spaces were all occupied which will lead to parking on the adjacent roads.



Moving on to Galashiels I was just in time for the return of 158726 at 13.34 arriving at the platform, squeezed in between the A7 and the hillside. The new Interchange with buses is seen to the left in the photo below.



Access to the platform is via a pelican crossing from the Interchange, which in the photo left taken on the 3rd September, is seen from the town side showing the bus ranks. The path to the left of the building leads to the A7 beyond with the stone platform wall and station sign just visible.

Continuing on to the end of the line at Tweedbank, the first train seen on my trip, 158735 was seen again returning at 13.52. After a 10 min

lay over it headed back north at 14.02. With the exception of Eskbank (248) this is the second largest station car park with 235 spaces and it was well filled, unlike Eskbank. Along the route the 7 new stations have provision for 704 car park spaces but these vary between stations with Galashiels having none. Tweedbank is intended to act as a park and ride. It was noticeable that provision may not be sufficient at some stations with Newtongrange (56) and Stow (59) full. Those not mentioned are Shawfair (59) not seen and Gorebridge (73) which was fairly empty.

right 158735 arriving at Tweedbank

below Tweedbank terminus with the staff only operating centre, Eildon View on the left (the Eildons can be seen above 158735)



One aspect of the route which may become an issue is that there are no toilet facilities at any of the stations though the Interchange has some at Galashiels. Apart from grumbles heard that capacity was insufficient for the opening services, obviously too popular and that from the railway it isn't actually that scenic, It was good to see a railway long thought dead brought back to life. It is clearly providing a role as a commuter route and time will tell if it becomes a tourist route, which in fairness it wasn't planned as such, considering very few attractions are near the railway and will require connections to be developed.



the second day of the ScotRail steam specials operating along the Borders Railway saw 4-6-2 60163 'Tornado' t&t 67026 above 60163 at Edinburgh Waverley having arrived with the 14.28 from Tweedbank, left 67026 Galashiels at 14.59 13th September 2015 (Iain Gardiner)



4-6-2 60009 'Union of South Africa' arriving at Tweedbank at 12.14 with the ScotRail steam special with 67026 'Diamond Jubilee' on the rear, 1st October 2015 (Gareth Patterson)

STIRLINGSHIRE SIGHTINGS

by Derek Sneddon

The following sightings are from Camelon Station & nearby Carmuir's Junction with an occasional sighting from Falkirk. Only freight and notable loco hauled workings are shown together with the diagram code, time, origin and destination (see location codes)

17th August			26th August			5th September		
05.45 68005 4H47	MN-IS		06.30 66106 6A32	MN-AB		05.45 66302 4H47	MN-IS	
08.30 66607 6A65	OX-AB		08.30 66619 6A65	OX-AB		13.30 66107 6S36	DS-GM	
18th August			13.00 68002 4A13	GM-AB		6th September		
05.10 66607 6H51	OX-IS		13.30 66114 6S36	DS-GM		13.00 68002 4A13	GM-AB	
05.45 68005 4H47	MN-IS		27th August			13.45 45407 1Z29	LI circular	
06.55 56302 6R46	GM-PW		05.45 68001 4H47	MN-IS		18.30 45407 1Z29	DL circular	
13.00 68001 4A13	GM-AB		13.00 68002 4A13	GM-AB		21.04 66023 6K32	MN-Pitlochry	
13.30 66011 6S36	DS-GM		28th August			7th September		
19th August			05.45 68001 4H47	MN-IS		05.45 66302 4H47	MN-IS	
05.45 68005 4H47	MN-IS		06.30 66023 6A32	MN-AB		08.25 37516/57313 1H88	KK-ED	
06.30 66011 6A32	MN-AB		13.00 68002 4A13	GM-AB		08.30 66619 6A65	OX-AB	
13.00 68001 4A13	GM-AB		29th August			8th September		
20th August			05.45 68001 4H47	MN-IS		05.10 66619 6H51	OX-IS	
05.45 68005 4H47	MN-IS		13.00 68002 4A13	GM-AB		05.45 66302 4H47	MN-IS	
08.30 66607 6A65	OX-AB		21.10 66607 6K30	MH-Carmont		06.55 56302 6R46	GM-PW	
13.30 66193 6S36	DS-GM		31st August			12.05 66106 6K35	MN-Forsinard	
21st August			05.45 68001 4H47	MN-IS		13.00 68002 4A13	GM-AB	
05.45 68005 4H47	MN-IS		07.52 47802/804 1H88	KK-ED		13.30 66110 6S36	DS-GM	
06.30 66102 6A32	MN-AB		08.30 66607 6A65	OX-AB		9th September		
13.00 68002 4A13	GM-AB		13.25 66023 6D61	RI-GM		05.45 66302 4H47	MN-IS	
22nd August			1st September			06.30 66431 6A32	MN-AB	
05.45 68005 4H47	MN-IS		05.45 66302 4H47	MN-IS		10.30 57310/57305 5Z70	CE-AB	
13.00 68002 4A13	GM-AB		06.55 56302 6R46	GM-PW		10th September		
13.30 66114 6S36	DS-GM		13.00 68001 4A13	GM-AB		05.45 66302 4H47	MN-IS	
20.58 66607 6K30	MH-Carmont		2nd September			13.00 68002 4A13	GM-AB	
23rd August			05.45 66302 4H47	MN-IS		11th September		
13.00 68002 4A13	GM-AB		06.30 66107 6A32	MN-AB		08.30 66603 6A65	OX-AB	
24th August			08.30 66607 6A65	OX-AB		12th September		
05.45 68001 4H47	MN-IS		21.30 56302 6M65	GM-SI		10.30 47786/57315 1Z87	PR-DU	
08.30 66607 6A65	OX-AB		3rd September			21.05 66603 6K05	MN-Carmont	
13.00 68002 4A13	GM-AB		05.45 66302 4H47	MN-IS		14th September		
25th August			13.00 68001 4A13	GM-AB		05.10 66603 6H51	OX-IS	
05.10 66619 6H51	OX-IS		4th September			05.45 66302 4H47	MN-IS	
05.45 68001 4H47	MN-IS		05.45 66302 4H47	MN-IS		13.00 68002 4A13	GM-AB	
06.55 56302 6R46	GM-PW		06.55 56302 6R46	GM-PW		15th September		
13.00 68002 4A13	GM-AB		13.00 68001 4A13	GM-AB		05.45 66421 4H47	MN-IS	
			13.30 66107 6S36	DS-GM		06.55 56302 6R46	GM-PW	

Location Codes:

AB Aberdeen	BE Berkeley	CH Chaddesden	DR Doncaster	FR Fairwater
AC Achnasheen	BH Brierley Hill	CI Clitheroe	DS Dalston	FW Fort William
AD Alexander Dock Jnct	BI Burntisland	CK Chirk	DT Didcot	FY Falkland Yard
AE Attercliffe	BL Bristol	CL Carlisle	DU Dundee	GC Glasgow Central
AF Ashford	BN Beeston	CM Chalmersston	DV Davenport	GE Georgemas Jnct
AH Ashchurch	BO Bo'ness	CN Carnforth	DY Derby	GL Gloucester
AJ Awre Junction	BP Bath	CO Cottam	EA Earles Sidings	GM Grangemouth
AK Aldwarke	BR Bridgwater	CP Chepstow	ED Edinburgh	GR Grange Sidings
AL Alston	BS Bescot	CQ Croft Quarry	EE Elderslie	GS Gleneagles
AN Acton	BT Barton Hill	CR Cadder	EH Eastleigh	GY Grimsby
AP Appleford	BU Burton	CS Cheltenham	EL Elgin	HA Hayes
AR Abercynon	BW Barrow Hill	CT Cardiff Tidal	EU Euston	HD Handsworth
AT Abbotswood Jnct	BZ St Blazey	CU Cumbernauld	ES Earlsseat	HF Hereford
AV Avonmouth	BY Barry	CV Cliff Vale	EV Evesham	HH Holyhead
AW Aberthaw	CA Calvert	CW Cwmbargoed	EX Exeter	HL Hartlepool
AY Ayr	CB Coatbridge	CY Corby	FB Ferrybridge	HO Halewood
BA Blair Atholl	CD Charfield	DC Dyce	FF Fiddlers Ferry	HR Harwich
BD Bedworth	CE Crewe	DL Dalmeny	FG Fishguard	HS Hunslet
	CF Cardiff	DM Dollands Moor	FO Forres	HT Hastings

HU Hunterston	LO Longsight	OB Oban	RO Round Oak	TJ Tuffley Jct
HV Haverfordwest	LR Leicester	ON Onllwyn	RR Rowley Regis	TK Tavistock Jct
HW Heywood Jct	LS Leeds	OO Old Oak Common	RV Ravenstruther	TL Tilbury
HY Hinksey	LT Longannet	OX Oxwellmains	RY Rugby	TO Taunton
IB Ironbridge	LW Linkwood	OY Oxley	SA Saltley	TN Toton
IM Immingham	LY Lindsey	PA Paisley	SB Stourbridge	TR Trishington
IS Inverness	MC Machen	PB Peterborough	SC Scunthorpe	TS Tees Yard
JM Jersey Marine	MD Middlesbrough	PC Port Clarence	SD Standish Jct	TU Tunstead
KB Kittybrewster	ME Montrose	PF Peak Forest	SF Stud Farm	TY Tyseley
KC Kirkcaldy	MF Milford	PG Pengham	SG Stoke Gifford	VA Victoria
KK Kilmarnock	MG Margam	PH Perth	SH Slough	WB Wembley
KL Kyle of Lochalsh	MH Millerhill	PL Polmont	SI Sinfen	WE West Burton
KM Kemble	ML Motherwell	PM St Philips Marsh	SJ Severn Tun. Jct	WG Wentloog
KN King's Norton	MN Mossend	PN Paddington	SK Shirebrook	WH Westerleigh
KS Kingsland Road	MO Moreton	PO Polmadie	SN Stockton	WI Whitemoor
KT Kennethmont	MS Maesteg	PR Preston	SO Southampton	WM Wemyss
KY Kingsbury	MT Mountsorrel	PT Paignton	SP Spetchley	WN Willesden
LA Laira	MV Manchester Vic	PW Prestwick	SR Stourton	WP Worksop
LB Ladybank	MW Moorswater	PY Portbury	SS Swansea	WR Warrington
LC Lincoln	NA Nairn	PZ Penzance	ST Stirling	WS Worcester
LD Lydney	NE Neath	RA Redcar	SV Stevenage	WV Wolverhampton
LG Lairg	NG Nottingham	RC Ratcliffe	SW Swindon	WW Washwood Heath
LH Leith	NH Newton Heath	RD Reading	SY Shipley	WY Westbury
LI Linlithgow	NJ Norton Jct	RE Redmire	TD Tyne Dock	YK York
LK Lackenby	NL Newtonhill	RG Rugeley	TE Trostre	YT Yate
LL Llanwern	NT Newport	RI Riccarton	TF Tremorfa	
LM Long Marston	NV Neville Hill	RM Rotherham	TG Teigngrace	
LN Laurencekirk	NW Nantwich	RN Roboston	TH Theale	

GLOUCESTERSHIRE SIGHTINGS

by Nigel Hoskins

The following sightings are mostly from Gloucester Station, but also include workings on the avoiding line southeast of the station between Barnwood and Gloucester Yard Junctions. Only freight and notable loco hauled workings are shown with the diagram code, time (if known) plus origin and destination (see location codes).

24th August

04.05 60092 6M03	RN-BD
06.11 66708 6E81	PY-Hexthorpe
10.55 66423 4V38	DV-WG
11.12 60066 6B13	RN-WH
12.09 70010 4V06	RG-SG
12.59 57012/004 6M56	BE-CE
14.45 56103/31601 0V31	WW-BT
15.02 66199 6V92	CY-MG
18.08 66232 6V35	BS-AV

25th August

08.28 66199 6M81	MG-RO
08.55 66754 6V80	WE-PY
10.40 66302 4V38	DV-WG
10.58 60092 6B13	RN-WH
12.02 70010 4V06	RG-SG
13.38 56103/312 6Z34	CT-SN
15.00 66091 6V92	CY-MG
16.04 66199 6V07	RO-MG
19.12 66077 6B72	GR-AK
19.16 66176 6V69	BS-AD

26th August

10.52 66302 4V38	DV-WG
11.13 60092 6B13	RN-WH
12.25 60010 6E41	WH-LY
12.30 70005 4V06	RG-SG
12.52 57301/310 6M63	BR-CE
15.45 66094 6V92	CY-MG

27th August

08.27 66119 6M81	MG-RO
09.02 66754 6V80	WE-PY
11.58 70005 4V06	RG-SG
12.02 66165 6V05	RO-MG
12.20 60010 6E41	WH-LY

28th August

04.03 66120 6Z94	LY-AW
04.04 66168 6M11	MG-RO
07.56 66107 5Z43	KK-LA
10.53 66423 4V38	DV-WG
11.12 60092 6B13	RN-WH
12.02 66168 6V05	RO-MG
15.02 66126 6V92	CY-MG
18.12 66172 6V35	BS-AV
18.25 66120 6Z44	AW-LY
21.06 60063 6V55	BD-RN

29th August

06.07 66172 6M90	AV-CI
06.10 66754 6E89	PY-CO
10.05 70010 4V06	RG-SG
18.03 66053 6V06	HD-NT

30th August

10.40 57301/305 5Z75	Bedminster-Coventry
18.52 66172 6E68	MG-SC
21.30 66754 6V80	CO-PY

31st August

10.46 66424 4V38	DV-WG
11.45 70010 4V06	RG-SG
14.47 37611/609 6M56	BE-CE
18.33 66057 6V35	WR-AV
19.09 66171 6Z44	AW-LY

1st September

08.38 66041 6M81	MG-RO
08.58 66754 6V80	DR-PY
10.55 66433 4V38	DV-WG
11.02 60092 6B13	RN-WH
12.02 66132 6V05	RO-MG
12.22 60059 6E41	WH-LY
12.30 70010 4V06	RG-SG
15.08 66165 6V92	CY-MG

2nd September

11.13 60066 6B13	RN-WH
20.16 66055 6E30	MG-HL

3rd September

11.11 60066 6B13	RN-WH
12.02 66094 6V05	RO-MG
16.40 37603 1Z20	DY-Haverfordwest

4th September

11.14 60068 6B13	RN-WH
12.02 66024 6V05	RO-MG

5th September

06.00 60092 6B13	RN-WH
------------------	-------

5th September (cont)

09.15 57316/601 1Z02

09.55 70010 4V06 CE-Minehead
 14.55 60092 6B47 RG-SG
 15.53 66419 4V38 WH-RN
 18.32 66136 6V06 DV-WG
 18.32 66136 6V06 HD-NT

7th September

15.29 37057 0V27 DY-CF
 17.01 66070 6V35 BS-AV
 22.32 66148 6V81 RM-CT
 22.58 66185 6V61 RO-MG
 23.32 66095 6V97 BN-NT

8th September

04.41 66054 6V99 TS-MG
 05.20 66169 4V32 IM-ON
 08.37 66176 6M81 MG-RO
 10.54 66423 4V38 DV-WG
 11.05 70010 4V09 RG-SG
 11.15 60066 6B13 RN-WH
 12.22 60017 6E41 WH-LY
 14.59 66040 6V92 CY-MG

8th September (cont)

18.14 97301 3Z18
 19.15 66134 6B72
 20.07 66054 6E30

9th September

09.02 66754 6V80
 11.04 70010 4V09
 11.21 60063 6B13
 12.23 60071 6E41
 12.31 66155 6V05
 13.55 20305/308 6M63
 14.58 66144 6V92
 17.02 66182 6V35
 20.12 66015 6E30
 20.16 66434 4M36
 20.27 60092 6V55
 23.26 66140 6V97

10th September

10.55 66419 4V38
 11.04 70010 4V09
 11.13 60092 6B13
 11.58 66200 6V37

DY-BL
 GR-AK
 MG-HL

CO-PY
 RG-SG
 RN-WH
 WH-LY
 RO-MG
 BR-CE
 CY-MG
 BS-AV
 MG-HL
 WG-DV
 BD-RN
 BN-NT

DV-WG
 RG-SG
 RN-WH
 TO-NT

10th September (cont)

12.23 60017 6E41
 15.07 66145 6V92
 16.06 66160 6V07
 21.14 66169 6E09
 22.21 66169 6V35

15th September

08.02 37218/608 6V73
 10.58 60063 6B13
 15.52 66100 6V07
 15.55 66040 6M41
 19.10 66087 6B72
 19.28 60063 6B47
 21.18 66067 6E09
 21.30 66729 6E35

16th September

15.53 66100 6V07
 17.02 66230 6V35
 17.10 66040 6M41
 20.26 60092 6V55
 22.33 66089 6V04
 22.38 66125 6V81

WH-LY
 CY-MG
 RO-MG
 ON-IM
 RM-CT

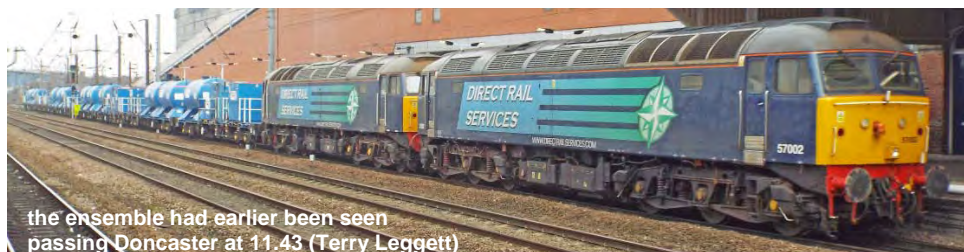
CE-BE
 RN-WH
 RO-MG
 MG-RO
 GR-AK
 WH-RN
 ON-IM
 CF-PC

RO-MG
 BS-AV
 MG-RO
 BD-RN
 KY-CT
 RM-CT

RHTT NEWS



57002 + 57012 was seen arriving at Stowmarket at 16.54 on the 29th September 2015 with 6Z50 10.15 from York Thrall with four RHTT sets for the East Anglia circuits. The four sets are FEA 642041 + 642019, 642044 + 642011, 642036 + 642050 & 642024 + 642047. The 57's ran into the goods loop then reversed into Marsh Lane sidings. Photo above is by Keith Partlow.



the ensemble had earlier been seen passing Doncaster at 11.43 (Terry Leggett)

INFRASTRUCTURE NEWS

Signal Boxes: With new signalling successfully commissioned at the end of August, the two remaining signal boxes at Stafford were taken out of use.

Birmingham New Street:

The new station concourse and shopping centre above Birmingham New Street station, previously the Pallasades but now known as Grand Central was opened on the 20th September, officially the 24th. There are now 3 grand entrances, Smallbrook Queensway (the previous main entrance), Station Street (John Lewis store) and Stephenson Street (where the new Midland Metro terminus will open later this year). Much work on the platforms has yet to be completed though redundant waiting rooms and ramps have been removed to free up space.



*above the atrium above the concourse, 22nd September 2015 (James Holloway)
the ticket barriers and departure screens are to the left*

The huge atrium is an amazing brightly lit space. Each of the 3 entrances boasts a big information screen which are literally eye catching. The Station Street entrance is the biggest change as this was a bit of a back entrance with a dingy flight of stairs and this will regenerate this neglected side of the station.

*Smallbrook Queensway, 22nd September 2015
(James Holloway)*





Having been born in Brum and commuted for 3 years from Tamworth in the early 1970s it is great that the UK's second city is now shunning off some of its enforced post war edifices.

Coventry Arena Station: The station alongside the Ricoh Stadium finally opened 3 months later than planned in September. However the current hourly shuttle service is operated by a single car Cl.153 holding 75 passengers and in a twist you couldn't make up the station is to be closed for an hour following the final whistle, with LMT advising potential passengers to use other modes of transport !! The council has washed its hands saying they have provided the facility not the train service. In fairness the intended 15 min service with additional trains cascaded following electrification elsewhere has somewhat scuppered the well meaning plans, but what a situation. Joined up thinking, I don't think so !! Maybe a platoon of refurbished Vivarail 'D' trains might be the answer shuttling back and forth ?

Edinburgh Waverley Refurbishment:

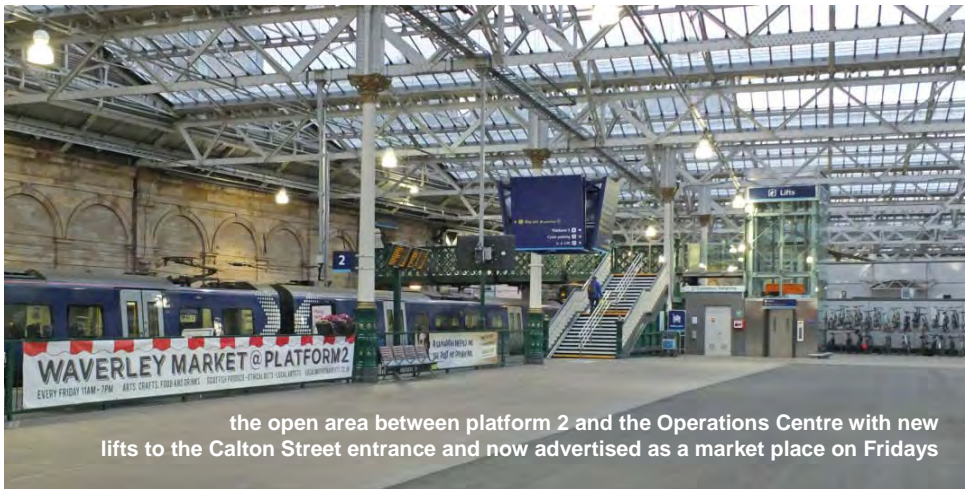
Second only to London Waterloo in area covered, the refurbishment of Edinburgh Waverley was completed in 2014 but not having had a chance to travel by train in the last couple of years the opportunity to see the improvements finally arose on the 21st September. The replacement of the glazing and removal of the scaffolding has meant the station is flooded with light. Unnecessary structures and furniture have been removed which has opened up the space particularly between platforms 2 and three where a new Operations Centre has been built with reflective walls. The banning of taxis from the station has also made a huge difference with no need to look out for vehicles when moving around between the main concourse and platform 11 and it feels eerily quiet once the rush hour has ended in the evening. Additional lifts and escalators have been built to the high level walkway spanning the station.



the refurbished roof from the western end of platform 7 with 221131 arriving and stabled 67003



the quiet roadway and taxi ranks between platforms 11 and the main central ticket hall



the open area between platform 2 and the Operations Centre with new lifts to the Calton Street entrance and now advertised as a market place on Fridays



left new escalators to the high level walkway with brick faced lifts on the other side from the once busy vehicle ramp to Waverley Bridge

below

the new Operations Centre to the east of the central ticket hall from alongside platform 2

bottom the new Operations Centre from the now empty car park between platforms 7 and 4



Hitachi Rail Vehicle Manufacturing Facility, Newton Aycliffe: The Hitachi facility in County Durham officially opened on the 3rd September 2015. The new Cl.800/801 IEP trains for the GWML and the ECML and AT200 for ScotRail are to be fitted out here. It is also possible that the AT300 bi-mode trains for the GWML will also be included, but no confirmation as yet.

Miscellaneous News: The footpath alongside the seawall at Dawlish that was breached in February 2014 was officially opened on the 14th August.

The construction of a new station at Low Moor between Halifax and Bradford Interchange has started and is anticipated to be open by Spring 2016.

PRESERVATION GALAS

Mid Norfolk Railway (MNR) Diesel Gala by Colin Pottle:

The MNR held its Autumn Diesel Gala from the 11-13th September 2015 and the Society as planned attended with our sales stand at Dereham on the Saturday and Sunday. Sadly for reasons probably explained in the report by Colin Pottle we didn't do very well. Thanks to the two members who joined but with book sales just nudging into double figures it wasn't a huge success. As Colin says the gaps between trains were worse for the stands as those who were there travelled on the trains leaving a deserted station.



before the sun came out, Lou & Chris ably 'man' a very quiet stand with CI.101 DMU 51434 behind



Four visiting locos 20311 + 20314, courtesy of GBRf, 45133 from MRB and 25057 from the NNR bolstered the meagre home fleet of 47367 & 47596. There was also a CI.101 DMU shuttle along the northern extension to Hoe utilising 51499 + 51226 (see front cover). So with only four classes of loco operating there was not a lot of variety and no headline grabber.

left 20311 + 20314 Dereham (08.34) 12th September 2015 (Colin Pottle)

There was by no means an intensive timetable, approximately 1 hour and ten minutes between trains, not including the shuttle to Hoe, which ran five times daily, between 11.10 and 15.50.

The weather forecast was abysmal too, with rain expected over the whole weekend. In the event, the gloomy start on Saturday (*Lou will contest to the chilly start, ed!!*) gave way to glorious blue skies, white fluffy clouds and beautiful sunshine for most of the mid-morning and afternoon. *Sunday was also good, ed*).

I was also surprised by the price. A rover ticket for my two children and I was an eye-watering £44.00 – compare that to last weeks' £23.00 for a family ticket at the Great Central Railway, with more trains running!. In the end I elected to buy a return ticket at £28.00 for the three of us.



47596 on 1W05 arrives at Wymondham Abbey (11.33) 12th September 2015 (Colin Pottle)

It may have been a combination of all the above factors that seemed to drive down numbers attending. Trains were maybe one quarter full, at best, and there were not the hordes of photographers at every location jostling for position!

We caught the second train hauled by the 20's and headed down to Wymondham Abbey. From there we jumped on the following train hauled by 47596 back to Dereham. By this time the sun was shining so we drove to Crownthorpe in order to photograph a few of the passing trains.



25057 on 1D08 near Thuxton, (13.22)
12th September 2015 (Colin Pottle)



above 45133 backing onto its train at
13.04, Dereham 13th September 2015

All of the trains throughout the day left on time and arrived at their destinations up to a few minutes early, the staff were friendly and knowledgeable.

I hope the visitor numbers being down doesn't cause the MNR to not stage an Autumn Gala as the Nene Valley Railway did earlier this year. I would encourage everyone to visit their local preserved lines on running days, as the saying goes – "use it or lose it!"



above in glorious late afternoon sun, D8069 +
50019 are stabled alongside Dereham station,
12th September 2015



47596 + 47367 on 1D10 at Crownthorpe, (14.41)
12th September 2015 (Colin Pottle)

Ecclesbourne Valley Railway (EVR) Multiple Memories Gala by Colin Pottle:

EVR, which now has the largest collection of working DMUs in the UK, held a DMU only Gala over the weekend of the 26-27th September 2015 entitled Multiple Memories and is one of their best earners.

Love them or hate them, there's no getting away from the fact that DMU's were the backbone of British Railways for over forty years. Out of the thousands of first generation DMUs that were in service there are only about 260 preserved examples left and the Ecclesbourne Valley Railway caters for a number of these.

Over the weekend there were four sets running. These comprised:

Set 1 – Cl.101 50253 + 59303 + 50170

Set 2 – Cl.108 + 119 53599 + 51073

Set 3 – Cl.101 51505 + 51188

Set 4 – Cl.122 + Derby Lightweight 55006 + 79900

A further non-working Derby Lightweight set 79612 + 79018 was stabled in platform 1 at Wirksworth.

I went along on the Sunday and parked at Duffield, the southern terminus adjacent the EMT station which was £2.20 for the day in the rather small 'mainline' car park. The EVR used to branch off at this junction. The Rover ticket was priced at a very reasonable £15.00 for the days' travel.

Sunday started at a respectable 10.48 with set's 1 and 3 arriving from Wirksworth. These were then separated and I joined set 1 forming the 11.15 back again.

The main operating base and depot is at Wirksworth, the northern terminus of the railway, where there were a number of units, coaches and locos dotted around in various stages of repair. Two of the locos present were Cl.31 D5814 and recent arrival Cl.33 33103 'Swordfish' (see **TRANSFERRED STOCK**). There was a shuttle operating the Ravenstor branch from platform 3, which heads further north formed of set 4. Interesting to note that the trackbed beyond Ravenstor still exists and at a rather steep 1 in 5 gradient ! I look forward to that being reinstated.



79612 + 79018 left with 79900 + 55006 on the Ravenstor branch right
Wirksworth, EVR 27th September 2015 (Colin Pottle)

After a few hours photographing, I departed Wirksworth at 14.15 with set 4 and alighted at Shottle. This can only be achieved with trains from Wirksworth as there is only one platform and trains from Duffield pass here on the loop. A few photos later and set 3 rolled into the platform to take me back to Duffield.

This was a very leisurely day, the staff were extremely friendly and all the trains departed / arrived within five minutes of the stated times. There were not crowds of people visiting, but talking to the staff, I found that Saturday was manic and the trains were rammed, especially the nine car fish and chip special between Wirksworth and Duffield.



Great Central Railway (GCR) Diesel Gala by Colin Pottle:

The GCR held its Diesel Gala from the 4-6th September 2015 and with the weather forecast looking pretty dismal, I elected to attend this Gala on the Sunday. I'm glad I did, the forecasters got it wrong (again), the skies were blue and the sun was beaming down all day long!

This was a real Sulzer-fest with Cls.24/25/26/27/31/33 & 45 namely 5081, D5185, 26007, D5401, D5830, D6535, D123 & 45041. The 31 only ran on the Friday. There was also a steam dining special running on Sunday hauled by 4-6-0 Black 5 45305.



We arrived at Leicester North in plenty of time to see D5185 hauling the first train from Loughborough and bought my rover ticket, a very reasonable £23 for myself and one child. We hopped on this train and made our way to Loughborough and upon arrival I checked out the shed whilst my daughter made friends with the yard cat....*sensible child, ed !!*

After a spot of breakfast we caught the 11.15 from Loughborough and proceeded to take a leisurely trip back to Leicester, stopping off at each station to take a few pictures and soak up the atmosphere. The gala was well attended and most of the trains were filled, not necessarily with train enthusiasts, but families just having a nice day out, brilliant to see and also good for the railway in general.

I asked a member of staff how the bridge-fund was progressing and the reply was encouraging. Apparently it was all tied in with the electrification of the Midland Main Line and now that this is paused

(possibly back on now, ed) work is being done on both sides so the timescale should be about the same, with the bridge being the last thing put in place, as opposed to the original plan which was to get the bridge in then upgrade on both sides.



5081 on 2A61 approaches Quorn & Woodhouse from Loughborough, 6th September 2015
(Colin Pottle)



left Colin's daughter Charlotte watches 26007 on 2A29 arriving at Rothley from Loughborough, 6th September 2015 (Colin Pottle)

As an aside GCR North was also running trains hauled by CI.73 E6016 as seen below with the 15.49 from Loughborough to Ruddington.



Next Month: Due to the shortage of space this month, articles on the Severn Valley Railway Autumn Steam Gala by Mike Brook and the Llangollen Winter Warmer by Martin Evans will appear in the November 2015 issue.

LIGHT RAIL & METRO NEWS

Tyne & Wear Metro:

The 5 year refurbishment programme has been completed on the Tyne & Wear Metro fleet. Has any member got a recent photo of the refurbished and re-liveried stock ?

Nottingham Express Transit:

As reported in the last in the August 2015 issue the following photos show services now operating from the new Toton Lane terminus. It is very handy to call in on the way to Toton bank.

right Alstom Citadis 201 is seen departing Toton Lane at 14.41 in part advertising livery for Asda and Kiss Me Kate at the Theatre Royal, Nottingham



Also as reported last month new Alstom Citadis tram 221 is shown below with its new name 'Stephen Lowe' at Toton Lane at 14.49 on the 19th September 2015. From my observations all trams arrived and departed from platform A.

left Alstom Citadis 206 'Angela Alcock' in all over eon advertising livery departing Toton Lane at 14.49 as NET 221 arrives, which will cross over to the same track, 19th September 2015





Metrolink: *the following information & photos are kindly provided by Geoff Hope.*

September was a better month for Metrolink. On the Rochdale line between Hollingwood and Failsworth there have been a spate of attacks on trams during school holidays. Patrols were increased including the use of mounted police but with schools re-opening after the summer holidays no further attacks had been reported.

Car parking at park and ride tram stops is free during service hours however since 2012, cars parked overnight have been issued with £100 fines, collected by a third party and Metrolink does not make a profit from these fines. The issue is that overnight parking uses spaces for commuters the following day but consideration is now being given to plans for a free overnight parking pilot scheme on Friday and Saturday nights starting in December 2015.

Five competitors from the Greater Manchester Bike Ride are reported to have fallen off their bikes at the same spot with two ambulances called on the day at the tram stop in Droylsden on the Ashton line. At this stop a cycle route is provided so cyclists do not need to cross the track with clear signage and road markings.

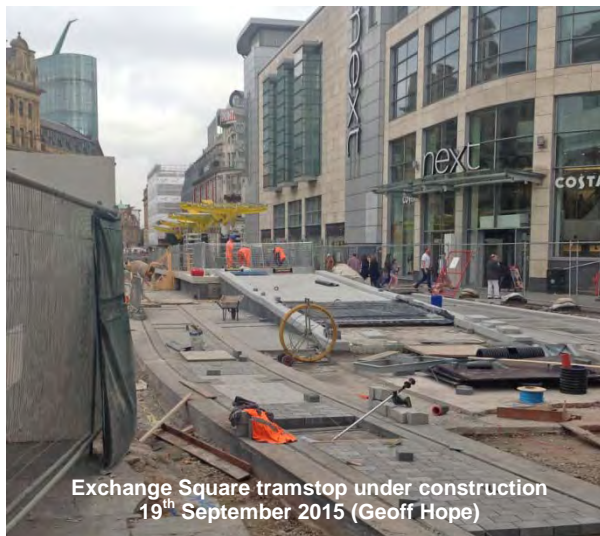
A visit to the Metrolink network on the 19th September confirmed Deansgate-Castlefield was 'contractor free' with the lift now working. The exhibition bridge linking Deansgate Railway Station with the tram stop is complete (see photo below). As it wasn't a sunny day I'm still waiting to see if the engraved leaves on the station canopies will cast shadows on the platforms works.



Single line working was in operation through St.Peters Square between Manchester Central and the City Art Gallery on Lower Mosley Street, a distance of approx a near straight half a mile. Two double trams are permitted on this section at any one time serving Bury - East Didsbury/Eccles via Media City - Piccadilly & Altrincham - Etihad Campus services at 12 minute intervals.

The reconfigured Market Street stop has been completed, which with the Manchester Victoria tram stop finally complete, marks the end of the current build / refurbishment projects.

Work is now concentrating on the spur from Victoria to Exchange Square, the only stop on the Second City Crossing (SCC). A complete new island platform opposite the Arndale Centre will be served by a twelve minute service from Shaw & Crompton on the Rochdale line, planned to be up and running for Christmas 2015. Track installation beyond Exchange Square along Cross Street towards Albert Square is at an advanced stage. A start has also been made at St Peters Square with one concrete base partly laid being part of the tram stop due to open in September 2016, consisting of four lines, two island platforms one serving the original City Crossing and the other the SCC due to open in September 2017.



Exchange Square tramstop under construction
19th September 2015 (Geoff Hope)

Tram 3103 arrived at Queen's Road depot over the August Bank Holiday weekend with its first day in service on the 19th September doubled up with 3081 on the Eccles/Media City - Piccadilly service taking me to Cornbrook. On the same day, tram 3104 arrived at Queen's Road depot at lunchtime to be commissioned and made ready for service.

Observations for 19th September 2015 were as follows:

Cornbrook 08.50-10.20:

Bury - East Didsbury: 3001+3015, 3003+3007, 3006+3017, 3008+3041, 3011+3036, 3019+3037, 3020+3026, 3032+3058, 3035+3048, 3039+3044

Altrincham - Etihad Campus:

3005+3046, 3009+3013, 3023+3029, 3025+3033, 3027+3055, 3031+3057, 3034+3049, 3045+3056

Altrincham - Deansgate-Castlefield: 3018/3040/3047/3051 & 3052

Eccles/Media City - Manchester Piccadilly

3061+3076, 3065+3066, 3067+3071, 3069+3089, 3074+3097, 3081+3103, 3095+3098

Manchester Airport - Cornbrook: 3062/3063/3068/3077/3084/3091/3096 & 3100

Manchester Victoria 10.45-12.20:

Bury-Piccadilly: 3010/3014/3016/3021/3038/3042 & 3050

Rochdale-Ashton: 3064+3093, 3083+3087, 3099+3102

3022/3028/3070/3072/3075/3079/3082/3088/3090/3092/3094 & 3101

Queen's Road Depot 12.25-12.50: 1027/1028, 3024/3043/3059/3073 & 3104 + 4 unidentified trams

Old Trafford Depot 13.50-14.00: 1020/1023 & 2001, 3012/3053 & 3054

Trams not seen or unidentified: 3002/3004/3030/3060/3078/3080/3085 & 3086



stored T68 trams 1020/1023/2001
Old Trafford Depot, 19th September 2015 (Geoff Hope)

RAILWAY GLOBETROTTERS

Epic Austrian Borders 2013 – Part 7 (final) by Ray Smith:

Sunday April 14th 2013: Zilina shed was next which had 60 on. A good start to the day yet the next shed was even better.



183 003, Zilina Depot, 14th April 2013



151 014, Zilina Depot, 14th April 2013



163 115, Zilina Depot, 14th April 2013



240 145, Zilina Depot, 14th April 2013



754 036,
Zwollen Depot, 14th April 2013



751 173,
Zwollen Depot, 14th April 2013

Zwollen Depot has a selection of buildings and yards and covers a large area. A wonderful depot with 129 on.



210 009, Zwollen Depot, 14th April 2013



746 010, Zwollen Depot, 14th April 2013



736 004,
Zwollen Depot, 14th April 2013



210 012 with 210 010/103/034,
Zwollen Depot, 14th April 2013



above left preserved 775 012 with original number T678 0012, Zwollen Depot, 14th April 2013



above V60 16761 private DB V60 class,
later becoming DB classes 344, 345 and 346,
Zwollen Depot, 14th April 2013



preserved 0-8-OT 422 0108,
Zwollen Depot, 14th April 2013



0-6-OT 323 006 plinthed outside the depot,
Zwollen Depot, 14th April 2013

On to the capital, Bratislava. Outside Vajnory station, a local halt, 8 locomotives were stabled. Just down the line from this station is the Freight depot at Vychod. A good selection of locomotives with 54 on, mainly diesels. Still on the shed was 441 105. This locomotive was here two years ago when I was last here and I believe it is Bosnian but I have no idea why it is here.



740 016 now privately owned and operated by Lokorail, Bratislava Vajnory, 14th April 2013



Bosnian 441 105 in immaculate condition, Bratislava Vychod Depot, 14th April 2013



240 128,
Bratislava Vychod Depot, 14th April 2013



230 110,
Bratislava Vychod Depot, 14th April 2013



770 021,
Bratislava Vychod Depot, 14th April 2013



721 230,
Bratislava Vychod Depot, 14th April 2013

Another stabling point is adjacent to the Railway Museum with 10 on. Hlavní passenger shed was next where 38 locomotives were seen and these were the last Slovakian locomotives we saw.



Pacific 387 013 has been here for years,
Bratislava Railway Museum,
14th April 2013



this 2-10-0 has no identification,
Bratislava Railway Museum, 14th April 2013



0-6-0T 310 507 plinthed at the entrance,
Bratislava Railway Museum, 14th April 2013



361 001 Bratislava Hlavni Depot,
14th April 2013



350 014 Bratislava Hlavni Depot,
14th April 2013

Of note, we were allowed round every depot we visited in the Czech Republic and Slovakia.

It is now a short journey back into Austria and straight to our hotel to drop off our bags before going to West depot, just outside West station. Permission granted and we spotted 53. Kledering yard was the last visit of the day and with the car. To see this properly you need to circumnavigate it by car. It would take forever to walk. Eventually 31 were seen and it was off to the airport to drop off the car. We took a local unit back into Vienna for food and beer.



710 001 Bratislava Hlavni Depot,
14th April 2013



1116 130
Vienna West, 15th April 2013



Lokalbahn tram 109
at the Depot terminus, 15th April 2013

Monday April 15th 2013: Now without transport we bought a Vienna day pass and spent some time on Westbahnhof before going out to Hutteldorf then on to Meidling. This is the temporary main through station until the new main station, which is under construction is completed. From the platforms, at certain points you can see the Lokalbahn trams passing, which we later took to the Lokalbahn depot.

right preserved tram 231 Vienna Lokalbahn Depot, 15th April 2013



As it happens this depot is over the road from the brand new, high security shed called Matzleinsdorf which has taken over from the old depots that were demolished in this revamp. We had a permit and without one it would be impossible to enter. Cameras, pass codes, revolving gates protect the tunnel that runs under the railway then up to the depot area. Our guide was waiting and took us round. An impressive depot with 80 locos and units noted. Stored on the depot were 14 of the ÖBB class 1014s (see photo opposite top). This was a class of 18 with all up for sale. Built in 1993/94 and numbered 1014 001–018. 1014 006 is the only one withdrawn and is on Linz shed in a sorry state along with 001/004 and 016. The rest are here. I was told that each locomotive is up for sale at €760,000 providing that all are purchased together !!

The rest of the day was spent riding U-Bahn, S-Bahn and tram lines before returning to Meidling for the rush hour. This was busy and the two German class 2442s that came through Linz earlier on the tour now passed through here.



Cl.1014s 018, 015, 017 and 009, Matzleinsdorf Depot,
15th April 2013



1064 007 away from home,
this locomotive is normally found heavy hump
shunting at Kledering yard,
Matzleinsdorf Depot, 15th April 2013



a better look at 1014 011,
Matzleinsdorf Depot, 15th April 2013



1116 153,
Matzleinsdorf Depot, 15th April 2013



departmental, 2062 056 running as X262 056,
Matzleinsdorf Depot, 15th April 2013

Tuesday April 16th 2013:

With the trip as good as over, I took the S-Bahn to the airport for my flight home. I had to change at Charles De Gaulle Airport in Paris and had some time spare so I went down to the platforms and copped 6 local units and two TGVs. Caught my flight to Newcastle. That's it!

photos by Ray Smith

FREIGHT MATTERS

*To allow members to keep their copy **UK Wagons** as up to date as possible, changes are provided via this spot every month. Please let Trevor Roots know if you have any amendments or wish pass on any other helpful wagon information, contact details on page 2.*

New / Added to TOPS:

IFA Bogie Cement Tanks (Hanson & Hope Construction) 81.70.9316.001 – 067 are now showing on TOPS with 001 - 024 en-route to Fréthun.

IFA Intermodal Flat for use on GBRF EMU deliveries 83.87.9980.004-3/005-0

Out of Store:

Thanks to Steve Wakerly and Mike Rumens for reporting seeing the following wagons out and about: 86912, 26554/555/573/577/603/629/633/639, 500087/140/178/185, 610321, 31.70.4938.162-5

Re-numbered: 33.70.4938 716-6 to 31.70.4938 103-9

Converted / Recoded:

HTA Bogie Coal Hopper to **HTA-E Bogie Stone Hopper** with modified bottom discharge doors 310596,710

Reformed / Recoded:

FCA Bogie Twin Container Flat have been coupled together as a triple sets and recoded **FQA**

BDA Bogie Steel Carrier 950204/584/761 are now coded **MXA**

FREIGHT NEWS

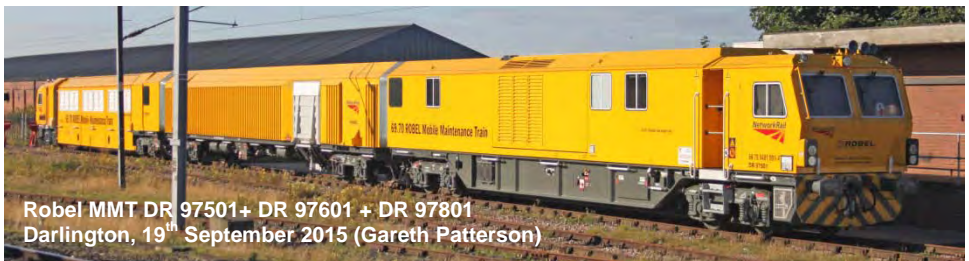
As reported in the last issue the derailed and damaged wagons from the New Cumnock derailment were taken away by road to the secure compound of the former Ayr Depot and dumped together (at all angles) on the ground. They are currently visible from passing trains. The wagons involved were 391127/4026/4053/4082/4091/4135/4154/4290/4546/4595/4893/4912/5031/5128/5158/5405.

Redundant HTA rakes are finding use on stone flows in the Peak District and the Mendips. The rakes with normal buffered outer wagons in the 330xxx range are particular useful for CI.59s which do not have buckeye autocouplers.

GBRF has signed a 3 year contract with FCC Environment to transport construction waste material for recycling from the North London Railfreight Terminal, a re-opened yard at Cricklewood, to Calvert, Buckinghamshire. The daily flow consisting of 20 box wagons departs Cricklewood at 12.17 and arrives at Calvert at 18.08 Mon – Fri. The return flow departs Calvert at 22.16.

Under a new 5 year contract GBRF ran its first gypsum train from West Burton PS to Portbury Dock on behalf of Siniat, an extension of the previous 4 trip per week contract signed in September 2014. The contract now involves 6 trips per week from Cottam to the other plasterboard production facility at Ferrybridge.

After being saved 5 years ago the SSI steel plant at Redcar is to close. Though no freight is worked by rail from the site, the internal rail system is operated by GBRF who signed a 10 year contract in 2011 and imported 12 Di8 Bo-Bo shunters to work the system.



Robel MMT DR 97501+ DR 97601 + DR 97801
Darlington, 19th September 2015 (Gareth Patterson)

Robel MMT DR 97501+ DR 97601 + DR 97801 (as reported in the August 2015 issue)
Darlington, 19th September 2015 (Gareth Patterson)

STOCK CHANGES

*It is hoped that all major changes recorded below will help you keep the **UK Combine**, **Pocket Book** and **Name Directory** up to date, (numerous pool code changes will not be recorded). In order to compile as accurate and up to date list as possible, can members please pass on their observations, particularly name changes and multiple unit reformations to the editor, **Trevor Roots**. Where possible photos of new nameplates will be included as and when a suitable photo is sourced from members.*

Misc. News:

158701 the first of 40 original Cl.158s (158701-736/738-741) allocated to ScotRail, has been refurbished and turned out in the Saltire livery.



ex-works 158701 at KB Rail Services, Springburn during a media event, 1st September 2015 (Bill Wilson)

DBS has put a further 10 Cl.08s up for sale: 08580/709 (Bescot), 08567/593/714/824/865 (Crewe) & 08578/653/701 (Toton).

DBS has also put up 5 Cl.58s for sale: 58008/12/22/23/48 and the sad remains of 66048 now in a black livery.

The transfer of D6836 (37905) is the 13th Cl.37 to leave preservation for a return to the mainline, roughly 30% of all those originally preserved with more likely to follow.

Locos Exported: (to Hungary) 47375
Locos Sent Abroad: (to France) 66226
Locos Repatriated: (from France) 66123



66123 Toton, 19th September 2015

Re-formed & Re-Numbered:

EMUs: (Cl.378 & 458 lengthened to 5 cars) 378231 incl 38431

8019 to 458519 incl 74403 from 460003

8029 to 458029 incl 74423 from 460003

Refurbished & Re-numbered:

DMUs:

170305 to 168325 170309 to 168329

EMUs: 357222 to 357322

Re-numbered:

50599 to 53599 53170 to 50170

53253 to 50253

Transferred:

Locos: (* into preservation, # from preservation)

08738/939 TO to CVR for TTLS

08994/09006 TO to BO for HNRC

08995* WA temp due to go to NDR

09201 TO to HOP repairs for HNRC

D6836 (37905)# MHR to LR

37413 ELR to RVEL DELTIC RSR to NRS

DMU: 52029 LMM to GWR

Steam:

USA Austerity 0-6-0T 30072 KWV to RSR

Names:

New:

Locos:

08483 Neil/Scousey - Neil Morgan
 1964-2014 Team Leader OOC
 43023 Sqn Ldr Harold Starr
 one of the few



43023 (Colin Pidgeon)

43238 National Railway Museum
 40 Years 1975-2015

60044 Dowlow

66750 Bristol Panel Signal Box

66757 West Somerset Railway

66759 Chippy

86401 Mons Meg

333011 Olicana Ilkley's Roman Fort

357007 Sir Andrew Foster

378204 Professor Sir Peter Hall

390002 Stephen Sutton



66058 (as reported in September 2015 issue)



221117 (as reported in February 2015 issue)

Coaches:

351 *Sapphire*

Removed:

08805 *Concorde*
 66200 *Railway Heritage Committee*
 90040 *The Railway Mission*
 92024 *JS Bach*
 92028 *Saint Saens*
 317723 *The Tottenham Flyer*
 319425 *Transforming Travel*
 390002 *Virgin Angel*

New Depot Codes for ICRS Books:

CSY *Crewe South Yard*
 TB *Three Bridges*

DAMAGED STOCK

more graffiti

....AGA still seem to have a problem

above MSO 62984 from 321310

sporting a graffiti tag on Belstead

Bank, Ipswich

7th September 2015 (Keith Partlow)



TRANSFERRED STOCK

left as reported in the September 2015 issue,
 spare Eurostar driving car 373308

is now in the workshop at the National Railway
 Museum, York being prepared for display, 14th
 September 2015

below as reported in June 2015 issue 33103

'Swordfish' moved from

BO to EVR, Winksworth,

27th September 2015 (Colin Pottle)



right & below
now in preservation the
extension modifications
can be seen on the two
ex-Severn Tunnel Cl.121
inspection bubble cars



above 977976 (960303) ex-55031
left 977975 (960302) ex-55027
Wirksworth, Ecclesbourne Valley
Railway, 19th September 2015



right & below as reported in the
August 2015 issue here is part of the
Pete Waterman collection moved
from Crewe Heritage Centre
Rowsley, Peak Rail,
19th September 2015



above 2-6-2T 5553, *left* 2-8-0T 5224



2HAP 4308 has moved from NRM, York
to Locomotion, Shildon for restoration

above 61275 inside the workshop area
where the undercarriage is being painted

left 75395 outside in the yard

4th September 2015



LIVERIES

*This section will endeavour to show all new liveries / variations or those existing ones where not carried on the stock before. Liveries that become 'extinct' will also be covered. As with names, it may take a while after the livery application before a photo is sourced from members. New liveries may also be shown in other articles. See 66430, 66750 & 73119 in **EASTLEIGH WORKS REPORT** and 37421 in **TRAFFIC & TRACTION NEWS**.*

the first two HST power cars to be treated with the new FGW dark green livery
right 43188
 (Darren Twelves) and
below 43187
 (Colin Pidgeon)
 Swindon, 23rd September 2015
 note the new number position under the guards window



below raised metal letters on HST power cars



below recently refurbished FGW Mk3s have been turned out in plain blue livery prior to rebranding as GWR as with 42565, Swindon 11th September 2015 (Colin Pidgeon)



right Mk3 TS 42301 part of the first full HST rake in GWR livery, Swindon, 23rd September 2015 (Colin Pidgeon)





above only partly illustrated before in 2012 at the York Railfest here is the unique liveried 57604 'Pendennis Castle' in Brunswick green livery which hopefully will survive the new GWR repaint, Paddington, 2nd September 2015 (Derek Everson)



above 08836 the first CI.08 in GWR livery complete with metal letters whilst visiting the EOR Autumn Diesel Gala, North Weald 20th September 2015 (Paul Sumpter)



57605 above & 57603 left in GWR livery, Paddington, 30th September 2015 (Derek Everson)
the 4th CI.57/6 57602 was still in FGW blue on the 17th September 2015



right ex-W&SR silver 67013 now the latest to receive DBS red livery Swindon, 20th September 2015 (Peter Trowbridge)





above 43012 in similar advertising livery to 43126 but without the white lower valance (shown in August 2015 issue), Swindon, 28th September 2015 (Colin Pidgeon)



above 390131 with the latest advertising livery promoting 'Business in the Community' Mid Calder Jnct, 4th September 2015 (Iain Gardiner)



above the unique NSE liveried 86401 is now back in blue albeit CS blue complete with stag motif and re-named 'Mons Meg' Euston, 12th September 2015 (Derek Everson)



left 375308 in the revised all over blue SET livery, Tonbridge Yard carriage stabling point, 19th September 2015



*left 57316 Edinburgh Waverley
2nd October 2015 (Iain Gardiner)*

*below 37518 Craightenny Depot,
13th September 2015 (Iain Gardiner)*



the latest locos to
receive WCRC
maroon livery



*left 47802 Perth, 18th September 2015
(Derek Sneddon)*

*right another view of 47830 working
this time and from the other end
showing the D1645 number,
Harrowden Jct,
18th September 2015 (Colin Pottle)*



*left 43238 in a revised version
of the new VTEC livery
celebrating 40 years of the
NRM, York,
(the other side is different)
Edinburgh Waverley
4th September 2015
(Iain Gardiner)*

ICRS SALES

We have now published 10 books since 2009, 7 of which are in print and available. Those due to be released as new editions will be shown at the relevant time (see below).

Books can be ordered either:

online via PayPal at www.intercityrailwaysociety.org

or by post from (please make cheque / PO payable to ICRS)

Carl Watson, ICRS Publications, 14, Partridge Gardens, Waterlooville, Hampshire PO8 9XG

All books, except **UKRS01 Pocket Book**, are A5 wire bound printed on 90gm paper with plastic coated covers allowing them to be laid flat.



BOOKS: (all Members receive up to 30% discount on ICRS books)

Titles:	Updated To	Prices	
		Member	Non Member
Current:			
UKRS01 UK Pocket Book 2015	(1 st Jan15)	£7.50	£10.50
UKRS02B UK Combine Summer Ed 2015	(1 st Jul15)	£12.00	£16.50
UKRS03 UK Wagons 2015	(23 rd Feb15)	£9.50	£13.50
UKRS04 UK Name Directory	(1 st Dec14)	£10.50	£14.50
UKRS09 Irish Railways 2015	(1 st May15)	£7.00	£9.50
UKRS10 Ultimate Sighting File Vol.1 – Mainline Diesel Locos	(27 th Sep13)	£10.00	£13.99
UKRS11 Ultimate Sighting File Vol.2 – Shunters, Mainline Electric & Prototype Locos	(27 th Sep13)	£8.00	£10.99

SUNDRIES:

Pocket Book cover	£1.50	£2.50
TRACKS A5 Cordex binder (takes 12 issues @ 48 or 64 pages – 2014 onwards) LARGE	£7.50	£9.99
TRACKS A5 Cordex binder (takes 12 issues @ 32 or 40 pages – 2011-13) MEDIUM	£7.50	£9.99
Navy & White Polo Shirts SMALL / MEDIUM / LARGE / XL / XXL	£18.00	£25.00