

TRACKS



Inter City Railway Society - May 2016



Inter City Railway Society

founded 1973

www.intercityrailwaysociety.org

Volume 44 No.5

Issue 521

May 2016

The content of the magazine is the copyright of the Society

No part of this magazine may be reproduced without prior permission of the copyright holder

President:	Simon Mutton	(01603 715701)
	Coppercoin, 12 Blofield Corner Rd, Blofield, Norwich, Norfolk NR13 4RT	
Chairman:	Carl Watson - chairman@intercityrailwaysociety.org	Mob (07403 040533)
	14, Partridge Gardens, Waterlooville, Hampshire PO8 9XG	
Treasurer:	Peter Britcliffe - treasurer@intercityrailwaysociety.org	(01429 234180)
	9 Voltigeur Drive, Hart, Hartlepool TS27 3BS	
Membership Sec:	Colin Pottle - membership@intercityrailwaysociety.org	(01933 272262)
	166 Midland Road, Wellingborough, Northants NN8 1NG	Mob (07840 401045)
Secretary:	Stuart Moore - secretary@intercityrailwaysociety.org	(01603 714735)
	64 Blofield Corner Rd, Blofield, Norwich, Norfolk NR13 4SA	
Events:	Louise Watson - events@intercityrailwaysociety.org	Mob (07921 587271)
	14, Partridge Gardens, Waterlooville, Hampshire PO8 9XG	
Magazine:		
Editor:	Trevor Roots - editor@intercityrailwaysociety.org	(01466 760724)
	Mill of Botary, Cairnie, Huntly, Aberdeenshire AB54 4UD	Mob (07765 337700)
Sightings:	James Holloway - sightings@intercityrailwaysociety.org	(0121 744 2351)
	246 Longmore Road, Shirley, Solihull B90 3ES	
Photo Database:	John Barton	
Website:	Trevor Roots - website@intercityrailwaysociety.org	contact details as above
Books:		
Publications Manager:	Carl Watson - publications@intercityrailwaysociety.org	
Publications Team:	Trevor Roots / Carl Watson / Eddie Rathmill	
Social Media:	Gareth Patterson	
Yahoo Administrator:	Steve Revill	

Contents:

Officials Contact List.....	2	Stock Changes.....	56-57
Society Notice Board.....	3-5	Liveries.....	60-63
Events.....	5	New.....	57-58
ICRS Sales	64	Transferred / Exported Stock	58-59
Regular Current News / Sightings:		Traffic & Traction News	16-32
Accidents	6	Other Feature Articles:	
Eastleigh Works Report.....	7-9	Forgotten Wagons.....	51
Franchise News	9	Gone But Not Forgotten	48
Freight Matters	54-55	Preservation:	
Gloucester & Stirling Sightings	49-51	Galas.....	38-48
Infrastructure News	10-14	Photo Spot - Diesel.....	53
Light Rail & Metro News	52-53	Photo Spot - Steam	14
Out & About Sightings	33-37	Rail Tour News	15

Front Cover Photo:

With newly painted 66746 t&t 66733 the Belmond Royal Scotsman sets back out of Keith bay platform at 10.00, from its overnight stay, to the loop to allow a ScotRail service train to pass from Inverness before continuing westwards to Kyle of Lochalsh at 10.14. From the start of the 2016 season GBRI have taken over the supply of traction for the Scotsman on a five year contract from the problem ridden WCR and this was the second tour with 66733 as back up, in place of 66736 used on the first run, 27th April 2016

£2.50 where sold separately

Printed & distributed in the UK by Henry Ling Limited, at the Dorset Press, Dorchester DT1 1HD

SOCIETY NOTICE BOARD

Editor's Comments:

Thanks to those members who have provided photos of nameplates, particularly Bill Wilson who had about 80%. I will feed them in as space permits. A revised list of those outstanding is included in **STOCK CHANGES** and will be updated monthly to show ones that I still need and additional new ones. Thanks also to photographers for taking on board my request to caption photos. There are still some who have not perhaps read my editorial last month, so if you haven't, please do so. It is a big help and if you have a query please contact me.

I would have loved to have travelled down for the Swanage Gala and more importantly I wanted to swing by the Bristol St.Philips Marsh Open Day. The list of traction attending was very interesting and possibly the only time a collection of different company HSTs will all be present together. Sadly having already spent 12 days away for the AGM and our first visit south since September 2015, I have been virtually solid on editing this issue of **TRACKS** and am still doing so as the gates open in Bristol...argh. I know quite a few members have attended so I expect a good selection of photos for the June issue along with Swanage... just been sent the first photos from Bristol as I finish (late Mon)...envy !!.

As usual the topical content has far outweighed the pages available and I am severely pruning to fit. Consequently articles already penned (8 pages) are postponed until June, **MEET THE OFFICIALS**, **RAILWAY GLOBETROTTERS – Around the World in 40 Days - Pt 4**, **NVR Industrials Gala**, **PRESERVATION NEWS - Telford Steam Rly** and as for **RAMBLINGS...** I don't know when I'll next have room, sorry Dave. I can only see it getting worse with the introduction of new stock, estimated at 17 vehicles per week up to 2020 and major infrastructure projects stretching over several years to come. Maybe we'll have to have a couple of specials during the year, which specifically pick up the ongoing serials without the pressure of topical subject matter.

Some of you may already know but Ian Allan are to close their Manchester shop at the end of June. This leaves just Birmingham and London Waterloo out of the original four. What it does do is prevent non-members walking in and picking up our books or copies of **TRACKS** so losing us exposure. Hopefully some will still find us via the website but that is no good for those without internet access. Please continue to spread the word when you are out and about as a casual comment can very often lead to a new member or the sale of books, if not immediately then at least it sows the seed.

Membership Matters:

Subscriptions:

Standard Membership: Annual - £17.50, 5 year - £80.00 (saving £7.50 against annual rate)

eMembership: Annual - £16.00, 5 year - £75.00 (saving £5.00 against annual rate)

NB. Please note there is still a deficit gap between income from the **Standard Membership** annual rate and production / distribution costs of £1.10 pa per member. This has risen again by 12p pa from February 2016 due to an increase in postage. The cost of sending membership cards and general admin raise this much higher. So for the foreseeable future, membership is very much reliant on a subsidy from the sale of our books.

ICRS Membership gives you:

- **TRACKS** a high quality full colour 64 page monthly magazine - covering all aspects of railways, posted with Standard Membership or emailed as a pdf with eMembership.
- up to 30% discount on all ICRS books (6 currently available).
- occasional members only visits to railway facilities.
- the latest issue of **TRACKS** emailed (on request) 10 days prior to receiving printed version.
- an informative website, with access and indexes to previous issues of the magazine.
- 10% discount on Ian Allan books (direct sales from IA only).

New Members: (* ex-members re-joined)

William Baldwin* (Slough), Michael Boyes (Bradford), Scott Courts (Wetherby), Andrew Crisp (Dagenham), David Dobbins (Southsea), Iain Docherty (Edinburgh), Christopher Fordham (Plymstock), Stephen Gilder (Hetton le Hole), Richard Parker (Bingley), Michael Price (Cwmbran), Geoff Readman (Harrogate), Michael Robinson (Long Eaton), James Thornton (London), Adrian White (Yeovil), Robert Zepin (Chessington) - a warm welcome to you all.

Membership Renewal: When your membership is due for renewal this will be indicated along the bottom of the **TRACKS** address carrier sheet with your expiry date above your name. **Therefore please check your address carrier sheet with your copy of TRACKS...before you dispose of it.** The reverse of the carrier sheet will be printed with a Renewal form, which can be returned or not, depending on the method of payment (see below). If no renewal is forthcoming after a Reminder form and one month after your expiry date then your membership will be deemed to have lapsed. Please make sure you provide a telephone contact number. If you are ex-directory, don't worry as it will not be revealed to any third parties but it is important that we are able to contact you other than by post, which is a costly way to communicate and not covered by the membership fee. As a helpful 'reminder', members who have set up a bank standing order will have a note to that effect on the front of the carrier sheet but no renewal form on the reverse. Hopefully then no one will renew twice, as has happened !! **PLEASE RENEW by the due date, unless you state a reason for the delay.** Standard Members are given a short period of grace to allow post to arrive but if paying by BACS there is no reason to delay as the membership for eMembers, by its very nature, lapses on the end of month due date. If you are not renewing please have the courtesy to say so.

Methods of Payment: **Please note we cannot accept credit card payments over the telephone.**

Internet Banking (BACS) / Standing Order: This is the preferred, most cost effective, secure and quickest way of paying for you and the Society and ensures we get the full amount. Bank details will be included on your renewal form.

Cheque or Postal Order: Please make payable to ICRS and return your remittance with the form to: Colin Pottle (Membership Secretary) ICRS Membership Renewal, 166 Midland Road, Wellingborough, Northants NN8 1NG

PayPal: Pay by credit card or debit card via PayPal on the website. However this incurs a cost to the Society (currently £0.80 for £17.50, £0.74 for £16, £2.92 for £80.00 and £2.75 for £75.00). You do not need to have your own account, especially if underage but **PLEASE** read instructions on providing information on yourself if the applicant is not the PayPal account holder.

Please provide your first name and a landline telephone number, whether joining or renewing and your email. If you renew in the first week of the month, whilst **TRACKS** is at the printers, you may receive a Renewal / Reminder form but do not worry as the admin process will naturally see things cross in the post. Please also note that cheques are not presented to the bank until the first week of the following month. As well as receiving a new card, renewals will be acknowledged where possible by email.

NB. When using PayPal, please read and follow the instructions on the relevant web page.

Membership Cards: Your membership is valid until the end of month as shown by the first two numbers. For those who joined from mid 2009, the second two numbers are the year. Cards will be sent as soon as practicable following your renewal, separate from **TRACKS** distribution. No card is sent to international **eMembers**.

TRACKS Magazine:

If you so request, the very latest issue of **TRACKS** will be emailed as a pdf when it goes off to the printers so you will get it '*hot off the press*' 10 days before you receive the printed version. That means you have the latest news, some within days of the event occurring. Please email the Editor, Trevor Roots at editor@intercityrailwaysociety.org to receive the latest issue by email in addition to the printed version. Similarly the last 11 months are also available by email, but only to members. With this member benefit comes responsibility, please do not share **TRACKS** with non-members unless you are attempting to get them to join.

Submissions:

Articles: Any information / article on any railway related item will be most welcome for inclusion in the magazine. Your visits, travel stories or anecdotes about any part of the railway network, past or present, home or abroad can give pleasure to others or inform of places to visit. This railway hobby of ours is made all that more enjoyable by the sharing of information, knowledge and experiences. Neatly hand written submissions are perfectly acceptable, but ideally a typed document is preferable. Better still, if you have a PC and internet connection then send an email.

Photos: Good quality photographs are always welcome, preferably high res jpeg digital photographs via email (**not compressed please**), but prints are acceptable. Please send an SAE if you wish them returned. Please include full contact details with any submissions, including your first name.

The latest date for articles / info for the **June 2016** issue is **Friday 27th May 2016**
with delivery to members after **Wednesday 8th June 2016**
please check the **TRACKS** page on the website for date of posting from the printers

Magazine Distribution: **TRACKS** is distributed direct from the printers to members in a clear plastic wrapping with an address carrier sheet (reverse printed with a Renewal / Reminder form if appropriate). If any member fails to receive their copy after one week from the above estimated delivery date then please contact the **Editor**.

Magazine Contributors: (* new this month) Thanks to **Chris Addoo, Geoff Arnold, David Berg, John Bloom, Connor Bolger*, Phil Bonsall*, Mike Brook, Peter Davis, Dennis Dey, Neil Dix, Martin Eden, Martin Evans, Derek Everson, Iain Gardiner, Michael Hayman, James Holloway, Geoff Hope, Nigel Hoskins, Colin James, Terry Lea, Ian McAlpine, Stuart Moore, Stuart Nye, Keith Partlow, Gareth Patterson, Anthony Perry*, Colin Pidgeon, Colin Pottle, Mike Rumens, Norman Smith, Ray Smith, Derek Sneddon, Graham Stockton, Paul Sumpter, Colin Tarrant, Roger Thomas, Andrew Turnidge, Malcolm Wallace, David Walton, David Williams, Bill Wilson, Carl Watson & Trevor Roots**. We are sorry if anyone has been missed. Photos not credited in the caption or within the article are by **Trevor Roots**.

Website / Social Media:

The new re-designed website was launched on the 17th May 2014 allowing access to previous issues of **TRACKS** from Dec 2006 to date with new pages added listing articles appearing in these issues. However the last 12 months issues (on a rolling basis) are only available to members as pdfs on request from the Editor (see **TRACKS Magazine** above). If you have any queries or suggestions please email Trevor Roots at website@intercityrailwaysociety.org

Facebook: <https://www.facebook.com/Inter-City-Railway-Society-647885468685313/?fref=ts>

Twitter: <https://twitter.com/InterCityRlySoc>

Flickr Photo Gallery: www.flickr.com/photos/intercity-railway-society/

We have a photo gallery on **Flickr** and all photos submitted for inclusion in **TRACKS** will, time permitting, be added to the gallery. Please send all photos to editor@intercityrailwaysociety.org

ICRS Yahoo News Group: We have our own Yahoo News Group, established in March 2004, open to members and non-members alike to post sightings and observations, share comments and debate the current railway scene. To join visit groups.yahoo.com/group/intercityrailwaysociety/ or email Steve Revill at intercityrailwaysociety-subscribe@yahoogroups.com

EVENTS

MEMBER ONLY VISITS

Eastleigh Works, Saturday 4th June 2016: **Tickets still available, book yours now.**

Following our previous three successful visits in 2013, 2014 and 2015 we have organised another Members Only visit to Eastleigh Works on the 4th June which is expected to start at 13.00. However it is necessary to make a charge of £20 to cover the normal visit fee (which Arlington donate to charity) and organising stewards, but for that you will get access to all areas for about 3 hours, cab rides and there will be that hog roast again. The cost of food is subsidised by the Society. Please reserve your place by sending an A5 SAE (normal second class stamp will suffice) with a cheque / PO (made payable to ICRS) to Louise Watson (Events Co-ordinator). Please provide either an email or tel. contact to receive confirmation of your application. Tickets will be posted out at the end of May.

OPEN DAYS

DRS Crewe Open Day, Saturday 23rd July 2016: Advance notice of this years event. Tickets will be on sale through the DRS website <http://www.directrainservices.com> though you can buy them on the day at the gate. We will be there with our sales stand.

Longsight Traincare Centre, 2017 (TBC): It may be a long way off but Longsight Traincare Centre will be celebrating its 175th Anniversary in 2017. Provisionally planned for the weekend 14-16th July. Details TBC.

AGM REPORT

by **Carl Watson**

Our first AGM in the North East was held at NRM Shildon, also known as 'Locomotion'. Membership attendance was disappointingly very light compared to previous years with only seven members other than Officials, not helped on the day by travel disruption and the less than frequent service on the line to Shildon.

The AGM is an important part of running our Society and is also one of the few times that all the Officials gather together face to face. In addition to the business of the day, we were treated to a guided tour of some of the key exhibits on site that day, including DELTIC, LMS 5000 and LNER 4771, including visits to the cabs which were off limits to regular visitors. See photo of Simon, our President, in the cab of DELTIC.



above right DELTIC engine room from No.1 cab

above left to right (loco) Simon Mutton (President) with Carl Watson (Chairman) in cab and Stuart Moore (secretary) in cab doorway with *left to right (steps)* Martin Hall, Peter Foster & Christine Field

right no Simon you can't drive it home ! (Carl Watson)

Thank you to all those who did manage to make it there on the day and I hope they all enjoyed it as much as I did.



ACCIDENTS

150219 + 150249 collided with 43160 at slow speed on the 3rd April 2016 at Plymouth. Due to defective lifts and the need to transfer stores, the DMUs were re-routed onto the same platform as the HST, but didn't stop !! Eighteen people received minor injuries with both 150219 and 43160 damaged

EASTLEIGH WORKS REPORT

by **Norman Smith** photos by **Carl Watson**
for the period up to 30th April 2016

Locos: 66748 arrived for a repaint on the 1st departing on the 28th with Beacon Rail Leasing Ltd branding by the cab door (see photos below taken on the 27th - loco, 29th - branding by Paul Sumpter). 59003 left for Tonbridge West Yard on the 6th. 57305 arrived to collect Mk2F TSO 5937 on the 6th (see Coach Trips for 6/4 and photo right).



66705 came on and off site to re-fuel on the 6th. 66752 came on and off site on the 7th. The same loco then delivered a Mk1 1671 to Eastleigh Depot on the 8th (see also Coach Trips for 8/4).

66746 left in new Royal Scotsman livery for Doncaster Roberts Road on the 11th (see **LIVERIES**).

37175 t&t 37421 arrived with a Network Rail Test Train in the early hours of the 12th leaving later that day for Derby RTC.

73138 + 73141 arrived on the 12th and took over the NR test train left by the 37's. Having completed a test run they took the train to Hither Green on the 14th (see photo above taken on the 13th).

73212 arrived with 59003 from Tonbridge West Yard on the 19th, returning to Tonbridge later.





66423 in new DRS livery left for Willesden Brent on the 20th (see photo on previous page bottom taken on the 19th).

66424 arrived from Crewe Gresty Bridge for a repaint on the 20th (see photo left).

47739 arrived light from Hoo Jnct on the 26th. The same loco took away 5 x KVA's to Derby St Andrews Economac on the 28th. (see also Wagon Trips for 28/4).

Component recovery has started on 58008 (see photo below taken on the 28th).



57305 arrived from Crewe Coal Sidings with a Mk2F Open Brake Standard 9527 on the 27th before returning light to Willesden Brent the same day. (see Coach Trips for 27/4).



Alstom's 08617 has received the 'Steve Purser' nameplates from 08790 (see photo left).

Colas locos on and off site during the month were:

66846/847/850, 70801/810

Units: 442422 arrived on the 5th from Stewarts Lane for storage, the first off lease (see photo below).

Units receiving modifications:
444002/031, 450560/564.

OTP: Speno RPS 32-2 Rail Grinder DR79221-226 came into the Works on the 9th.

Stoneblower DR80206 arrived on site for storage on the 19th and departed again on the evening of the 28th.

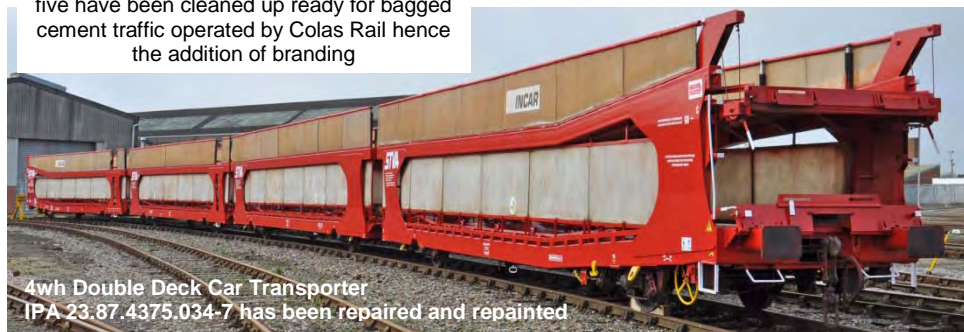
Wagons: Wagon Trips in/out during April were



5/4 DBS out 80.2398.622-3
 FL in 97712 FL out 97737/745
 12/4 DBS in 70.2795.323-6, 80.2398.528-2, 80.4647.045-0, 87.4375.006-5, 87.4384.043-7
 DBS out 87.4375.034-7 (see photo below)
 14/4 FL in 93374/478, 97718/731/772 FL out 97712
 19/4 DBS in 87.4333.010-4, 87.4375.002-4
 21/4 FL in 93312/364/442, 97757/759 FL out 93374/478, 97718/731/772
 26/4 DBS in 70.6905.033-0, 87.4375.009-9
 DBS out 70.2795.323-6, 80.4647.045-0, 87.4375.002-4
 FL in 93414, 97700/740/755 FL out 93312/364/442
 28/4 47739 took out 70.2795.301-2/306-1/312-9/331-9/333-5 (see photo below)



*above the first two KVA Bogie Vans
 83.70.2795.301-2 & 306-1 in the convoy of
 five have been cleaned up ready for bagged
 cement traffic operated by Colas Rail hence
 the addition of branding*



4wh Double Deck Car Transporter
IPA 23 87.4375.034-7 has been repaired and repainted

Coaches: Coach Trips in/out during April were

6/4 57305 took 5937 to Willesden Brent. 14/4 Mk2F 3366 scrapped on site by Raxstar
 8/4 66752 took 1671 to Eastleigh Depot 19/4 Mk2D 5700 scrapped on site by Raxstar
 27/4 57305 brought in 9527

FRANCHISE NEWS

First Hull Trains has been granted track access rights for a further 10 years up until; 2029 allowing them to go ahead and order 5 Hitachi bi-mode units.

TPE is to order new stock: 19 x 5 car Hitachi Cl.802, 12 x 5 car 125mph EMUs & 13 x 5 car CAF built loco hauled sets for use with DRS Cl.68s

ScotRail plans to operate a further 200 trains from 2018 with the introduction of new stock as reported previously and the retention of 13 Cl.170 as only 21 were due to be kept. Under new devolved powers a public sector rail operator will be allowed to bid for future franchises in Scotland.

INFRASTRUCTURE NEWS

Crossrail:



above 66767 + 66771 at the Crossrail railhead between Plumstead and Abbey Wood (the final eastern station on the line) looking east from Eynsham Drive (continuation of Basildon Road) towards Abbey Wood and *below* looking west from Church Manorway footbridge (a bit further west) towards the tunnel and Plumstead, showing two of the dedicated refurbished German built Newag 0-6-0 shunters, 5 & 7 and various wagons, 27th April 2016 (Derek Everson)



Dorchester South Track Re-laying:

Over the weekend 23rd – 24th April 2016 new track was laid through Dorchester South station. The following photos were taken by Andrew Buckley.

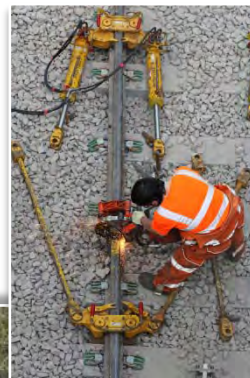


above 66846 arrives on site from the east with ballast empties at 13.42 on the 23rd

old ballast is removed from the work site just southwest of Dorchester South station by a road rail excavators at 13.57 on the 23rd



left 66091 at rest at 17.56 having arrived from the east with concrete sleepers for the worksite on the 23rd



above the last train into the possession with more ballast was 66003 t&t 66019 at 16.28 on the 24th. 66003 was the only loco to progress any further as the new ballast was not required and 66019 piloted the consist away.

top right Balfour Beatty Tamper DR 73938 awaits access into the site at 11.16 on the 24th

right above right new track and sleepers in place a two inch section was taken out on either line reason not apparent (16.43)

Norton Bridge Improvements (WCML): (photos by Roger Thomas)

Norton Bridge Junction has long been a bottleneck on the WCML north of Stafford. The re-modelling which started in 2014 involved building a new section of track to the west of Norton Bridge and the WCML, starting just north of Great Bridgeford and a flyover to take Stone / Manchester northbound trains from London and the southwest over the existing WCML. The original layout meant southbound WCML trains having to wait to cross Norton Bridge Jct. The work has involved building 6 miles of new 100mph railway, 10 new bridges, one bridge enhancement and four river diversions.



above looking north from old road bridge, 220117 heads a Bournemouth train over the WCML on the new flyover, the Down Slow line on the left is now out of use, 3rd May 2016

The new layout involves the Up and Down slow lines leaving the existing WCML on the new diversion at Little Bridgeford Junction following an almost straight route northwards and climbing at a constant

gradient of 1 in 125. Making use of the height gain, the double track route swings to the northeast after Searchlight Lane to pass above the WCML, to the north of the existing Norton Bridge Junction, on the new flyover. The new line then falls to tie in with the Stoke line at a new Yarnfield Junction. The



existing quadruple track WCML through Norton Bridge will be reduced to three tracks by the removal of the Down Slow. The new Down Slow will split at Searchlight Lane Junction with a new single track heading north to join end on with the existing Down Slow near Heamies Farm. The existing junction at Norton Bridge on the WCML will be reduced to a bi-directional single line chord. This line is retained only for flexibility and will not normally be used by timetabled

services. The layout was commissioned on the 29th March 2016 when the first service used the new flyover. In the photo above looking south on the 22nd April 2016, 57007 + 57008 approach Heamies Bridge (a private farm track to Heamies Farm) to join the WCML coming off the new down slow diversion route. The abandoned WCML Down Slow can be seen truncated to the right of 57008. The flyover is just visible through the OLE masts. A similar photo taken on the same day can be seen in **TRAFFIC & TRACTION NEWS**. More photos of the new layout from Roger in the June issue.

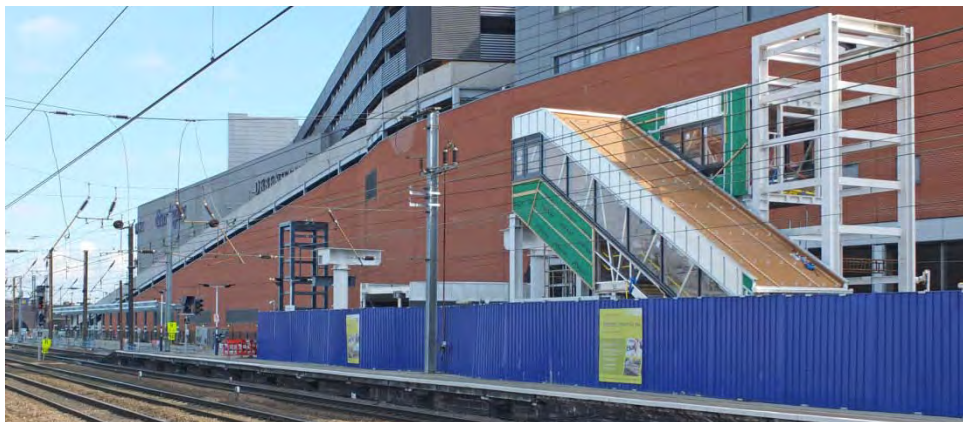


above the flyover looking south from the B5026 with the old road bridge behind, 3rd May 2016

Carlisle Station: The photo below taken on the 19th April 2016 shows scaffolding being erected throughout Carlisle station at the start of the process to refurbish the roof which will be completed in early 2017. Unfortunately it will become a bit dingy as natural daylight will be restricted during the work as a rash deck is to be installed. The platforms are then to be upgraded following the roof which will be finished in February 2018.



Doncaster Station – Platform 0: The photo below taken on the 10th April 2016 shows the ongoing work to construct the new platform 0 with stairs and lift under construction on platform 1 / 3.



PRESERVATION PHOTO SPOT - STEAM



Having been through a 6 year overhaul at its base on the Severn Valley Railway, Bulleid WC 4-6-2 34027 'Taw Valley' returned to service on the 16th May 2015 but has not featured since then (or before for that matter !). Having worked into Kidderminster Town at 17.55 on the 17th April 2016 during the 'Behind the Scenes' Open Weekend, its last run of the weekend, it then backed its stock out to the Depot before returning to have ash removed from the smokebox, where it is seen below at 18.35.



RAIL TOUR NEWS

Great Britain IX: The following photos are from the 2016 running of this nine day tour.



above with new electrification masts now in evidence Stanier 4-6-0 46100 'Royal Scot' t&t 57316 runs through Reading at 10.15, 26th April 2016 (Derek Everson)



above & left
Stanier Black 5 44871 t&t
47760 on OZ71 07.18
Bo'ness Exchange Sidings –
Inverness passing
Greenloaning at 09.03,
30th April 2016
(Iain Gardiner)

TRAFFIC & TRACTION NEWS

March 31

Unbranded Gatwick Express 387219 was seen awaiting onward movement to Bletchley behind 66553 at Derby at 17.23 (see photo at end).

82146 t&t 67029 passed Bescot at 14.25 on 10.06 St Pancras Int – Birmingham Int with coaches 11039 + 10211 + 10546 (photo below by David Williams).



April 2

66740 passed Gospel Oak at 12.41 on Acton Yard – Ferme Park (photo below by David Berg)



59005 passed Gospel Oak at 12.54 on Chelmsford Reception - Acton TC (photo below by David Berg)



60163 passed Basingstoke at 09.07 on Waterloo - Exeter St David's 'Devon Belle' Note the 'MATEY' plate above the buffers, a tribute to Ray

'Matey' Towell of the NRM who passed away on Easter Sunday (photo below by Connor Bolger).



April 4

455507 on 5B41 Wimbledon Park Depot - Eastleigh TRSMD was seen approaching Eastleigh at 08.10 (photo below by Chris Addoo)



66124 passed Johnstown footbridge with the 6V75 Dee Marsh - Margam empty steel working at 10.11 (photo below by Martin Evans).



April 5

66426 + MK3 12164 + 12107 were seen coasting down Belstead Bank, Ipswich at 15.53 with 5Z66 12.21 Wolverton - Norwich Crown Point running 47 minutes late (photo below by Keith Partlow)



66562 (in place of the normal GBRf Cl.66/7) on 6A33 14.40 North Walsham - Harwich Carless loaded condensate tanks climbed Belstead Bank, Ipswich at 16.41 (see photo at end)
70020 + 70014 (dead) were seen on Belstead Bank, Ipswich at 18.22 on 4S88 16.13 Felixstowe North - Coatbridge (see photo at end)
66615 climbed Belstead Bank, Ipswich at 13.17 on 6L65 06.22 Tunstead - Marks Tey loaded stone. Cl.66/6s are rare on the GE mainline (photo below by Keith Partlow)



60087 was seen in the Clydesdale loop at Polmadie heading for View Park Cement works at Uddington at 11.26 (photo opposite top by Iain Gardiner)



April 6

60056 6E38 passed Harrowden Junction at 17.41 on Colnbrook - Lindsey (see photo at end)

April 8

37688 was seen passing Spittal, Berwick-Upon-Tweed at 11.19 on Ladybank - Derby RTC 3Z14 test train (photo below by Gareth Patterson)



43028, 66705 & 43063 were seen at Swindon at 12.30 (photo below by Colin Pidgeon)



66034 passed Swindon at 12.48 on 4B35 Hayes - Moreton on Lugg (photo below by Colin Pidgeon)



Stoneblower DR 80211 passed Swindon at 12.19 showing the opposite cab to that shown in the March 2016 issue (photo below by Colin Pidgeon)



66847 + 66848, 70806 & 66752 were seen waiting for weekend work at 11.59 alongside Eastleigh station (photo below by Paul Sumpter)



60163 passed Clapham Junction at 15.38 on 1Y82 12.28 Victoria - Victoria ((photo below by Colin James)



66043 passed Kensington Olympia at 16.16 on 15.08 Crawley Yard - Acton Yard ((photo below by Colin James)



66730 passed Barnes at 14.17 on 4Y19 12.19 Mountfield Sidings - Southampton Western Docks ((photo below by Colin James)



37116 + 37025 passed Tonbridge at 15.13 on 0Z03 10.14 Derby RTC - Tonbridge West Yard ((photo below by Colin James)



67028 + 66188 were seen heading for fuel at Eastleigh Depot at 11.49 (photo below by Paul Sumpter)



April 9

45699 was seen at 10.38 at Water Orton firstly on 'Spirit of the Lakes' from Skegness – Stratford upon Avon and then returning to Carnforth at 13.11 at Walsall with courier van 80217 (photos opposite top by James Holloway) It was later seen passing Darlaston Junction at 13.43



47830 passed Walsall at 13.13 on Kilmarnock – Laira hauling barrier vehicle 6330 + 7 freshly overhauled HST carriages (photo below by Peter Davies)



DR 77901 was seen at Didcot (15.41) amidst electrification masts which are now springing up (photo below by Neil Dix)



E3137 / 86259 was seen at Euston on the 1Z86 Cumbrian Coast Express to Carlisle (photo below by Michael Hayman)



57603 + 57310 were seen at Paddington at 07.05 having arrived with 1A40 21.45 Penzance - Paddington ((photo below by Colin James)



37025 + 37116 passed Wellingborough at 18.30 on 1Q79 Tonbridge West Yard - Derby RTC (photo opposite top by Colin Pottle)



67005 t&t 67006 passed Kensington Olympia at 08.31 on 1Z39 08.14 Victoria – Runcorn (photo overleaf top by Colin James)



56081 + DVT 82305 passed South Kenton at 14.15 on 5Z56 13.00 Wembley TMD - Loughborough Brush (photo below by Colin James)



55009 was seen thrashing through the DML at Darlington Station at 08.50 on 1Z54 Pathfinder Deltic Borderer tour from Derby – Tweedbank (see photo at end)

66610 passed South Kenton at 12.40 on 6H50 12.18 Willesden - Tunstead, South Kenton (see photo at end)

April 10

D1015 t&t 67015 passed Chesterfield at 11.30 on Pathfinder Tours 'The Maybach Yorky' from Derby – York and return (photo below by Geoff Arnold)



April 11

37421 t&t 37175 passed South Acton at 17.03 on 1Q51 11.15 Derby RTC - Eastleigh Works (photo opposite top by Colin James)

DR 75402 Volker Rail Matisa Tamper passed Grange Park at 12.17 on Peterborough Eastfield Junction - Hitchin Down Yard (photo opposite by David Berg)

68019 approached Dundee at 13.21 with 4A13 Grangemouth - Aberdeen liner (photo opposite by Anthony Perry)



April 12

66107 passed Elstree & Boreham Wood at 12.41 on Limbury Road - Angerstein Wharf (photo below by David Berg)



66603 passed Elstree & Boreham Wood at 12.51 on Theale Lafarge - Hope (Earles Sidings) (photo below by David Berg)



DR 73903 passing Swindon at 14.05 en route from Plasser West Ealing - Lydney Junction (photo below by Colin Pidgeon)



66534 passed Swindon at 10.12 on 4L31 Bristol - Felixstowe North FLT (photo below by Colin Pidgeon)



Consecutively numbered FL locos passed Swindon within 5 mins of each other, 66503 & 66502 at 11.51 on 4O51 Wentloog to Southampton MCT & 11.56 on 4L32 Bristol to Tilbury RCT respectively (photos opposite top by Colin Pidgeon)



April 13

66105 reversed into Hoo Junction Up Yard at 13.38 with Tonbridge West Yard - Hoo Junction Up Yard (photo below by David Berg)



66059 passed Swindon at 14.15 on 7B12 Merehead - Wotton Bassett (Colin Pidgeon)



April 14

47580 + 34067 'Tangmere' passed Lichfield Trent Valley at 13.55 on a Southall WCR Carnforth (see photo at end)

66111 still carrying its Highland Stag branding on one side (see other side at Leicester on the 15th), passed Bedford at 08.17 (photo below by Graham Stockton)



The following were seen at Reading West (photos below by Paul Sumpter)

13.15 66567 Wentloog - Southampton

13.20 70016 Crewe - Southampton

13.40 59202 Acton – Merehead...a bit mucky !!



13.50 60039 Theale – Robeston



66564 + DR 92264 + 979118 passed Swindon at 11.17 on 6Z51 Bristol St Phillips Marsh – Plasser & Theurer, West Ealing (photo opposite top by Colin Pidgeon)



April 15

The following four locos were seen adjacent Eastleigh station at 08.30 (Norman Smith)

66705 + 66752 stabled, 66703 on 08.50 6M26 Eastleigh Yard - Mountsorrel empty ballast and 66719 on 09.10 6Y41 Eastleigh Yard - Hoo Jct Departmental (photo below by Norman Smith).



The following 9 locos from different companies and in different liveries were all seen at Leicester within 2½ hours. Only 2 x CI.20s were in the same livery (Andrew Turnidge)

10.30 68001



10.35 66111



11.40 66152 (see opposite top)



12.47 66541



13.06 20314 + 20096 t&t 20107 + 20132



13.56 57313



66736 + 66746 in its new Royal Scotsman livery passed Scremerston to the south of Berwick-upon-Tweed at 14.30 running 17 minutes late on 0S66 Doncaster Down Decoy - Craightenny T&RSMD (photo below by Gareth Patterson)



20189 + 20142 + barrier coach + de-branded and unnumbered 37611 passed Spittal, Berwick-upon-Tweed on 5Z52 Craightenny T&RSMD - Leicester LIP running 55 minutes early at 12.51 (see photo at end)

April 16

47851 t&t 57313 passed Swindon at 11.15 on Nenta Train Tours 1Z42 North Walsham - Worcester Shrub Hill 'The Cotswolds Adventurer' (photo below by Colin Pidgeon)



April 18

60076 was seen passing Spittal, Berwick-upon-Tweed at 17.50 running 40 minutes on 6S26 Seaham Harbour - Oxwellmains Lafarge Cement (photo below by Gareth Patterson)



66165 passed Gordon Hill at 10.29 on Wembley Euro Freight Ops - Barrington Unloading Pad (photo below by David Berg)



April 19

66718 approached Wellingborough at 18.18 on 6D12 Luton - Wellingborough (photo below by Colin Pottle)



April 20

47760 + 37706 + 46100 'Royal Scot' passed through Stafford at 14.16 on Crewe - Southall Loco Services Ltd positioning move ready for the Great Britain IX tour (photo below by Peter Davies)



68013 passed Tamworth Low Level at 09.58 on Crewe Basford Hall - Mountsorrel Sidings (photo below by Peter Davis)



April 21

90042 + 90041 dead in train (positioning move) climbed Belstead Bank, Ipswich at 11.39 with 4M88 09.32 Felixstowe North - Crewe Basford Hall running 18 minutes late (see photo at end) 66151 climbed Belstead Bank, Ipswich at 12.18 on 6V07 12.00 Ipswich Griffin Wharf - Theale (United Asphalt) loaded hardstone aggregate up Belstead Bank, Ipswich (see photo at end)

April 22

DR98014 + DR98013 + DR98009 passed Hearnies Bridge at 12.06 off the new down slow cord, Norton Bridge (see photo at end) 66415 passed Swindon at 11.42 on 4O71 Wentloog - Southampton MCT (photo below by Colin Pidgeon)



66849 + 70807 + 70809 + 70805 + 70804 passed Swindon at 14.17 on 0A28 Westbury - Hinksey Yard (photo below by Colin Pidgeon)



April 24

Diverted from the WCML, 66427 + 66431 were seen passing Spittal, Berwick-upon-Tweed at 15.53 on 4S43 Daventry - Mossend Euroterminal Tesco's running 46 minutes late.

April 25

70807 + 70805 + 70808 passed Swindon at 13.34 on 0F75 Hinksey Sidings - Westbury Down TC (photo below by Colin Pidgeon)



43002 partially repainted for St Phillips Marsh open day passed Swindon at 14.00 on the rear of IL60 Cardiff - Paddington (see **LIVERIES**) 59201 passed Swindon at 13.20 on 0B12 Westbury Down TC - Wotton Bassett Stone Terminal (photo opposite top by Colin Pidgeon)



DBSO 9710 t&t 37401 departed Silverdale at 09.59 on the 05.15 2C32 Carlisle – Preston DRS Cumbrian service.



April 26

66069 passed Reading under the looming electrification masts at 09.00 (photo below by Derek Everson)



66516 passed Cathron at 11.00 just north of Rugby on 4L93 Lawley Street - Felixstowe (see photo at end)

April 27

143612 + 143617 passed Dawlish Warren at 09.59 on 2F17 09.12 Paignton - Exmouth service (photo below by Malcolm Wallace)



37025 t&t 37254 passed Ingatestone at 13.48 on 1Q97 10.41 Ferme Park – Cambridge T&RSMD test train (photo below by Colin James)



57605 showing cab damage sustained from a fallen tree, passed Ingatestone at 13.00 on 0Z57 10.37 Old Oak Common C.S. – Derby RTC light engine move for repair (photo below by Colin James)



66568 passed Lichfield Trent Valley Jnt at 11.33 on a Crewe Basford Hall - Loughborough Brush light engine move (photo below by Peter Davis)



The following cross border freights were seen in the snow at Wandel & Abington (see photos at end):

06.10 90043 on CS 1S26 Euston - Glasgow & Edinburgh.

06.36 90024 + 90029 on 419X Mossend Euroterminal - Daventry INT

07.16 90018 + 90039 + 90036 on 640E Didcot TC - Mossend Down Yard.

08.35 43014 (see **LIVERIES**) t&t 43062 on 197G 07.35 Craigentenny T&RSM - Crewe CS.

08.42 66114 on 432X Mossend Down Yard - Clitheroe Castle Cement.

09.01 92038 on 06.20 Millerhill SS - Carlisle NY 350407 was seen passing Wandel throwing up the snow at on 1S30 05.00 Manchester - Glasgow (see photo at end)

66733 t&t 66746 on the Royal Scotsman was seen stabled at Keith at 09.30 prior to departing for the next leg of the tour to Kyle of Lochalsh.



20107 + 20314 t&t 20096 + 20132 passed East Goscote dragging LU 'S' stock 21556 on 7X23 Derby Litchurch Lane - Old Dalby (see photo at end)

April 30

68004 + 37425 descended Belstead Bank, Ipswich at 14.17 on 0Z68 12.06 Willesden Brent - Norwich Crown Point. The Cl.68 is to replace 66426 on stock moves to and from Crown Point.



Diverted from the WCML, 66301 + 66423 passed Spittal, Berwick-upon-Tweed at 15.13 on 4S43 Daventry - Mossend Euroterminal (photo opposite top by Gareth Patterson)



News from Norfolk by Stuart Moore:

From the start of the month until the 25th the short set was operated by 37419 t&t 37422. On the 25th the stock was taken off the duty and sent along with an extra DRS Mk2 to Dereham, MNR to be cleaned and serviced in advance of the AGA operated railtour on the 30th. During this period the duty switched to 37405 t&t 37419 hauling two AGA white liveried TSOs and a white DVT. This is the first time since the 37's began on the short set duty that the stock has been anything other than DRS Mk2s (see photo opposite top of set at Norwich on the 26th).



66426, the regular power for the ECS moves, was noted arriving at Crown Point on the 5th April from Bounds Green with Mk3s 12107/12164.

There is a new relief road being built around the north of Norwich. As a result there has been an increase in aggregate traffic to Norwich and Trowse yards. For the final two weeks in April there have been 6 DBC operated stone trains to Trowse from Mountsorrel daily Monday to Saturday. In the final week of April these were supplemented by two Tunstead to Trowse moves operated by FL. This produced the very unusual sight of 66613 on the 26th April and 66623 on the 28th. Other stone moves included 66041 into Norwich on the 13th, 66054, on the 20th and 66020 on the 27th.

On the 10th April 170204 crashed into a tractor in the Thetford area on an occupation crossing and was taken to Crown Point for repair. It was seen on the point from the Rail tour on the 30th.



The first NENTA tour ran this month with 47851 t&t 57313 it was seen arriving from Carnforth on the 15th April.

On the 22nd April Rail Operations Group operated a loco move from Butterley to Sheringham taking LUL liveried 20227 to the NNR for the summer period (see photo below passing Trowse).



On the 30th April 37405 t&t 37419 hauled 'The EACH Express' formed of the Norwich Crown Point short set. It was run to raise funds for East

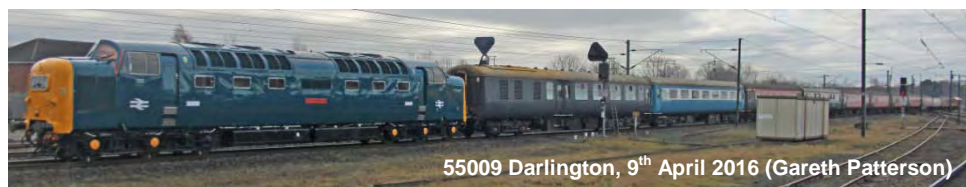
Anglian Children's Hospice and ran Norwich - Ely and return then Norwich - Liverpool Street and return. This took a CI.37 hauled passenger service back to London for the first time in several years. The tour was a success raising over £19,000.



Also on the 30th DRS ran a light loco move from Wembley to Norwich with 37425 + 68004. As a result those on the tour had the joy of seeing all four of the AGA allocated CI.37/4s in Norwich on arriving back in Norwich after the tour.



DR 98014 + DR 98013 + DR 98009
Heamies Bridge near Norton Bridge,
22nd April 2016 (Roger Thomas)



55009 Darlington, 9th April 2016 (Gareth Patterson)



66553 + 387219 Derby, 31st March 2016 (Terry Lea)



66610 South Kenton, 9th April 2016 (Colin James)



66516 Cathiron, north of Rugby, 26th April 2016 (Colin Pottle)



47580 + 34067 t&t 57313,
Lichfield Trent Valley, 14th April 2016 (Peter Davis)

90043 Wandel, 27th April 2016 (Iain Gardiner)



92038 Abington, 27th April (Iain Gardiner)



350407 Wandel, 27th April 2016 (Iain Gardiner)





66114 Abington, 27th April (Iain Gardiner)



90024 + 90029 Wandel,
27th April 2016 (Iain Gardiner)



90018 + 90039 + 90036 Wandel,
27th April 2016 (Iain Gardiner)





70802 + 70801 + 66850 + 70807
Swindon 29th March 2016 (Colin Pidgeon)



66562 Belstead Bank, Ipswich,
5th April 2016 (Keith Partlow)



90042 + 90041 Belstead Bank, Ipswich,
20th April 2016 (Keith Partlow)



20107 + 20314 t&t 20096 + 20132 drag 21556,
East Goscote, 29th April 2016 (Colin Pottle)

OUT & ABOUT

by James Holloway

*For clarity, steam locos are now shown in red. To be more helpful for those interested in where stock was exactly, can I ask all contributors who list trip sightings over long distances, to please add all locations when submitting to James. Please also ensure your sightings reach James a few days before the press deadline, see **SOCIETY NOTICE BOARD**...ed*

James Holloway:

30th March: Nuneaton **12.10:** 153366, 387216-218

9th April:

Water Orton 10.05-10.38:

45699 'Galatea', 47580/760, 66136, 170104/108
170113/636

Walsall 13.15-13.30:

45699 'Galatea', 47830+6330+41010+40204+
42013+42166+42012+42014+44004

15th April:

Bescot 11.20:

08907, 66014/162/250, 70805, DR98902/952

Walsall 11.25: 66055, 170503, 350255

22nd April: Rugby 15.12: 387217/221, DR77002

Stuart Nye:

30th March:

Birmingham New Street:

170108/112/113/503/505/517/520/637, 220004/21
122124/41, 323215-17/19, 350105/117/118/126
390050/155

Tyseley: 66716, 172214/215/219/342

Leamington Spa: 165014, 220013

Banbury:

68010, 70010, 165011/113, 168005/106, 220023

Oxford:

43182/189, 66056, 165111/118/127/128, 180103
220018/32

Didcot:

18000, 43004/005/012/020/027/028/035/036/040
43042/087/088/092/094/097/098/122/126/128/130
43135/137/140/143-145/149/152/154-156/158-160
43168/171/174/175/182/185/187/189/196-198
66056/078/186/414/416/503/558/564/594, 70002
70018, 165105/108/110/117/119/121/122/127/128
165135, 166202/04/14/18/21, 180102/06
220003-06/31, 221121/22/31/37/39, DR80206

Dennis Dey:

4th March:

Three Bridges: 700107/109/110

Crawley: 66130

Purley: 66150

Crawley: 59103

11th March:

Three Bridges: 700002/107-109

Crawley: 66134

Purley: 66031

East Croydon: 387107/108/115/124/201/203

Crawley: 59103

18th March:

Three Bridges: 700102/107-109/111

Crawley: 66107

Wimbledon: 458508/510/515/534

Clapham Junction: 66847

Purley: 66206

Crawley: 59203

1st April:

Three Bridges: 700102/107/109/110/112

Crawley: 66134

Purley: 66148

Wimbledon: 458514/516/517/525/526/536

Clapham Junction:

66078/188, 458503/504/506/507/510-513/519/521

458523/530/534/535

Crawley: 59204

Three Bridges: 700102/103/106/107/109/110/113

Purley: 66094

East Croydon: 387125/201, 700107

Crawley: 59001

Michael Hayman:

1st April:

Paddington:

43002/016/040/127/131/132/163/168/172/177
57310, 68002/04

Acton: 66061/078/108/168/174/207

Southall: 43186, 47245/580

Reading: 43033/137/194

Didcot: 66016/084/093/113/176

Swindon: 66056/119/250

Bristol:

37219, 43134/138/141/149/151/164/165/169/171/180

Taunton: 66419/519/572

8th April:

Clapham: 60163 'Tornado', 66147, 67006

9th April:

Euston: 33207, 86259, 90044, 92023

Willesden: 66550/583/610, 67005/06

18th April:

South Croydon: 20905, 47739, 66770, 73964

Colin Tarrant:

5/6th April: Crewe Casey Lane 15.45-00.45:

15.45 90045 Felixstowe-Ditton

15.55 66556 SO-Garston

16.05 68019 MT-CE

16.20 66622 WN-TU

16.30 90016 Felixstowe-CE

16.50 66590 Trafford Park-SO

17.20 66762 TO-CE

17.30 92032 Garston-Dagenham

17.40 57306 CE-RY

17.45 66537 SO-Trafford Park

18.03 90037/35 CE-WB
 18.05 66206 SO-HO
 18.10 86607/614 Felixstowe-Trafford Park
 18.25 66533 Trafford Park-Felixstowe
 18.40 66564/70004 BS-CE
 19.20 90045 Ditton-SO
 19.27 66434 CE-BS
 19.37 92038/90049 WN-CE
 19.40 57304 RY-CE
 19.50 70013 SO-Garston
 19.52 66762 CE-TO
 20.10 70011 DV-CB
 21.11 66238 Middleton Towers-Ellesmere Port
 21.45 68004 TO-CE
 23.21 66206 HO-SO
 23.35 90043 London-Scotland sleeper
 23.55 66544 Garston-TL
 00.06 66425/429 MN-DV
 00.16 66096/151 DT-MN
 00.23 66763 Garston-Dagenham
 00.30 70020/14 Felixstowe-CB

Mike Brook:

2nd April:

Church Fenton 08.10-15.28:

(incl. ECML diversions)

37025/421, 43206/208/239/251/257/272/274/295
 43296/300/302/305-308/312/313/315-319/384
 43423/465/467/484, 66135/155/507/713/736/754
 67003, 142094, 144004, 150269/273, 158753/754
 158758/759/795/848/851/853/902/904/905
 180107, 185107/11-14/16/18/20/22/26/31-34
 185139-43/45-48/50, 220002/07-10/13/23/25/29
 220031-33, 221122-24/28/30/31/35/37, DVT 82201



08.15 66135 on 05.37 Doncaster Up Decoy -
 Hambleton North Jct



09.31 67003 drags 82201 t&t 91130
 on 06.20 Edinburgh – King's Cross (diversion)



11.22 37421 t&t 37025 on Derby RTC to Derby
 RTC via Newcastle NR test train (diversion)



14.12 66155 on 09.40 Washwood Heath RMC -
 Tees NY (diversion)



14.57 43272 t&t 43317 on 12.30 King's Cross -
 Edinburgh (diversion)

Derek Everson

19th April: Reading West 11.05-12.25:

66221/250/513/593/618, 70006

Mike Rumens:

29th February:

Nuneaton 13.23-14.35:

66537/548/551/597, 70018/808, 90018/29, 153365
 170107/397/520/639, 221114/17, 350127/373
 390040/045/046/104/114/122/128/141/154
 DR73110/920/948, 80208

1st March: Nuneaton 14.06-14.39/15.30-15.55:

66013/065/554/724, 70801, 90035/39/40, 153366
 170105/106, 221104/07/18, 350129, 390002/006
 390107/124/141, DR73110

2nd March: Nuneaton 14.00-15.05:
 70801, 90029/42, 153364, 170108, 350114
 387213/214, 390001/002/009/121/126/128/130/151

3rd March: Nuneaton 13.58-14.40:
 66551, 70806, 153365, 170104/637, 221104
 350118, 390009/020/039/103/141/153

7th March:
Nuneaton:
 66566, 221118, 350377, 390042/141/151
 DR73115/923
Hams Hall: 66725/769
Saltley: 66058
Birmingham New Street:
 43301/304, 153365/66, 170108/502/507/508
 323207/13/43, 350103/129/234/244, 390123
Bescot: 66041/710/849, 70808, 97302/304
Walsall: 66050/082/170, DR77002

8th March: Nuneaton 14.10-14.35:
 66109, 68019, 70808, 153365, 170102/398/518
 170637, 221106, 350124/256/377, 390105/123
 390148/152, DR73923

9th March: Nuneaton 14.10-14.35:
 70805, 153354, 350107, 390044/157, DR73923

10th March: Nuneaton 14.05-15.05:
 31452, 56303, 66139/567, 70805, 153371, 170101
 170102/523, 221104, 350109/377, 387213/215
 390118/122/128-130/132/152

11th March: Nuneaton 13.50-14.59:
 66005/013, 90039/40/43, 92042, 153354, 170106
 170111/637, 221108, 350121/376, 387215/217
 390043/114/124/127, DR73923

14th March: Nuneaton 13.59-14.40:
 66514, 70805, 153354, 170104/637, 221118
 390005/013/103/122/124, DR73910/923

15th March: Nuneaton 09.55-10.20/13.32-14.45:
 37419, 66108/169/514/597, 68012/18, 70009/804
 90024/37/41/46, 153354, 170103/105/117/398
 350122/368, 390020/040/044/047/104/121/122
 390136/141/148/151/152

17th March: Nuneaton 13.56-14.40:
 66104/514, 70807, 153366, 170103/110, 390016
 390040/042/050/121/151, DR73923/929

21st March: Nuneaton 13.31-14.45:
 66547/585/954/955, 70008, 90029/36, 153364
 170103/115/398/519, 221105, 390046/049/050
 390107/132/137/154/155, DR98008

22nd March: Nuneaton 13.56-14.38:
 66150/175/547, 70805, 153356, 170111/397/639
 221110, 350373, 390008/016/040/049/122/126/129
 390154

23rd March:
Nuneaton: 153354, 221110/14
Leicester Depot:
 56032/065, 58016, 86235/701/702
Leicester:
 20096/107/132/314, 43061/082, 66704, 156413,
 222001/009/014
Loughborough: 222005/006/011
Beeston: 67028, DRC78229/31/34
East Midlands Parkway: 222025
Nottingham:
 43081/083/089, 60020, 153302/08/21, 156408/413

158785/857/859/863-866/904, 170104/109/521
 222011/017/104, Trams 202/03/05/07/09/11/12
 214-17/19-21/26/28-31/35/37

Toton 10.55-12.30:
 08480, 60003/008/013/014/018/025/027/031-037
 60041/042/050/051/054/060/061/067-069/074/075
 60086/088/090/097/098/500

24th March: Nuneaton 13.55-15.00:
 66175, 90016/29/36, 153356, 170115/397/398/520
 170523, 221102/12, 350104/111/127, 390020/040
 390042/103/107/112/122/127/128/135

28th March: Nuneaton 1350-14.35:
 60096, 70810, 153366, 170102/113, 350122
 390005/043/119/125/131, DR73806/909

29th March: Nuneaton 10.10-10.37/13.36-1341:
 66020/571/587/717, 68016, 70003/808, 90024/36
 90045, 153366, 170102/104/110/518/523, 220017
 220033, 221101/05/13/31/33, 350108/118/128
 387217/218, 390011/013/050/103/114/115/118
 390125/129/141/151/152

30th March: Nuneaton 14.03-14.22:
 66088/093/954, 70807, 153366, 170103, 350377
 390016/126/148

31st March: Nuneaton 13.52-15.02:
 66020/069/106/147/547/955, 153364, 170398/520
 170523/638, 221107/11, 350102/371/373, 387216
 387218, 390008/011/016/043/047/050/104/122
 DR98008

1st April: Nuneaton 14.28-15.50:
 57315/601, 66120/512/518/717/765, 90041
 153364, 170107/110/112/397/519, 221104/10/15
 221142, 350116/120/123, 390009/011/018/104
 390123/126/141/152/154/156, DR98008

4th April: Nuneaton 13.59-14.35:
 66145/420, 70805/807/808, 153366, 170104/111
 170116/397, 221142, 390005/008/112/127/132
 390134/135/141, DR73905

5th April: Nuneaton 14.02-14.48:
 66250, 70810, 90045, 92015, 153366, 170637
 221103/07, 350104/123, 390001/005/043/046/122
 390128/141

6th April: Nuneaton 14.10-14.40:
 60039, 66096, 70810, 153366, 170398, 221108
 390131

7th April: Nuneaton 13.59-15.00:
 20142/189, 60047, 66068, 70801, 90045, 153371
 170105/107, 221105/43, 350106/127, 387217/219
 390039/043/047/050/104/115

9th April:
Nuneaton:
 86259, 170101, 390006/148/153, DR73948
Hams Hall:
 66702/717
Lawley Street: 66503/954
Birmingham New Street:
 158837/839, 170111/504/507/509/637/639
 172331, 220005, 221101/15/21, 323201/05/06/12
 323215/40, 390040/127
Bescot: 08907, 66058/117/130/149/199
Walsall: 47773, 66069, 323204/43
11th April: Nuneaton 13.45-14.40:
 66516, 70802/804, 90035/37, 153366, 170106/519

221112, 350236, 390002/042/043/117/119

12th April: Nuneaton 14.01-15.05:

66086, 70807, 90045, 153375, 170110/636
221104, 350110/113/119, 387219/220, 390010
390039/125/129/155, DR73109/73913/75407

13th April: Nuneaton 13.49-14.40:

66067/086, 70801, 90035/37, 153366, 170107/111
221107/12, 350101/369, 390002/013/046/107/114
390125/135, DR75407

14th April: Nuneaton 14.00-14.35:

66066, 70802, 153364, 170104, 390004/050/118
390122/129/151

18th April: Nuneaton 13.38-14.46:

66067/161/524/572, 70804, 90016/24/29, 153371
170102/111/523/638, 221116/43, 350107/117/376
390002/020/045/121/126/130/152/153/156

19th April: Nuneaton 09.30-10.45:

66167/508/537/591/734, 68001, 153375, 170101
170113/637-639, 221108/43, 350112/124, 390005
390011/050/117/121/122/138/141/153

20th April: Nuneaton 09.35-10.10/14.00-15.05:

46100 Royal Scot, 37706, 47760, 66131/567
153371, 170101/105/111/521, 221101/05/08/12/43
350108/109/119/267, 390005/009/049/115/121
390123/124/135/137/138/151/153

David Walton:

6th March:

Fairwater Yard: 66507/536

Bristol FLT: 66414/571

Lawley Street FLT, Birmingham:

66538/595/597

Derby: 08536, 31459, D6757/37421/606/608, 97301

Toton: 66085/704

Roberts Road, Doncaster:

08927, 66701/708/768/774/778

Doncaster Station

08669/724, 66529/953, 67021

York: 66433

Newcastle: 67023

Edinburgh: 90046

7th March:

Edinburgh 08.50-09.30 & 16.05-18.20:

43206/208/300/312, 67016, 68006/17, 90047
91101/26, 156476, 158702-705/708/713/724
158727-729/789/867/868, 170393/394/401/404
170405/409/412/418/419/427/429/431/433/434
170450/455/460/461/474/477, 221121/24/26/28/39
334001/04/09/11/15/17/18/25/26/28/31/34/35/38
334039, 350406, 380016/102/103/112, 390139

Stirling 10.25-10.55:

43309/320, 158716, 170457/460/470/472
Glasgow Queen St 11.35-12.30 & 14.45-15.15:
170403/407/408/415/419/430/432/456-458/461/470

Glasgow Central 12.45-14.30:

156430-433/435/445/457/462/476/495/504/506
156510, 158789/868, 221132/34, 314201-03/05/06
314208/10/12/13/16, 318253/57/58, 320301/04/07
320308/11/18/21, 350407/410, 380001/002
380004-006/012-016/018/022/101/107-109/111
380113-115/118, 390103/128/132/135/138

8th March:

Edinburgh Waverley 09.30-17.50:

43208/300/310/314/317/367, 67016, 68006/17
90046, 91103/16/19/25, 156430/432/453/496/505
158703-705/708/709/714/719/724/726-731/735
158738-740/782/786/867-869, 170394-396/403
170407/409/410/413/414/418/424/426/427
170430-434/451/452/458-461/470-474/476/477
220015/25, 221132/34/37, 334001/02/04/05/07
334009-11/14/17/19-21/23-25/28-33/39, 350402
350410, 380102/103/106/107/112/114/115
390042/128/136

9th March:

Edinburgh Waverley 09.05-09.25 & 15.40-17.20:

43206/315/316, 67016, 68006/17, 90048, 91109
91112, 156501, 158701/703/705/716/717/728
158731-733/735/758/786/868/869, 170393/394
170405/406/412/413/418/420/428/434/452/457
170471/473/478, 221132-34, 334001/03/04/06/07
334011/17/23/25/27/31/33/34/38, 350409, 380101
380103/106/107/114

Glasgow Queen Street 10.40 & 14.10-14.45:

156450/462, 170394/395/403/414/420/426/431
170432/454/460/474, 318251, 334008/14/27/39

Glasgow Central:

156437/453/454/456/465/467/474/476/492/495
170503/507/514, 158733/869, 221131/33
314202/06/08-10/12-16, 318255/58/62/64/70
320304/08/14/22, 334012, 350401, 380004
380006-009/011-015/018-020/022/103/107/110
380111, 390039/125/127/156

10th March:

Edinburgh: 67016, 90049, 91131

Newcastle: 67023

York: 66302/434

Doncaster: 08724

Bounds Green: 08441

King's Cross: 67008

Paddington: 66772

Acton: 66063/130/177/200/250

Westbury: 66039/127

23rd March:

Eastleigh 10.00-15.20:

59001, 60039, 66059/077/101/105/107/117/138
66161/503/516/540/542/543/549/566/572, 70014
70801/804/808, 158880/881/888, 377419, 444003
444004/06-08/10/13/16/18/19/21/23/27-34/36/38
444039/42/45, 450004/008/009/040/042/077/084
450086/089/091/093/095/114/115/127/559-561

Ian McAlpine:

24th March:

Peterborough: 66504/710/742/751/769, 158864

Grantham: 66543, 158847

Radcliffe: 60047

Grindelford: DR77904

Earles Sidings: 66603/619

Cornbrook: Trams 3073/082

Edge Hill: DR73922

Liverpool Lime Street: 508137/140

Green Lane: 507026

26th March:

Little Sutton: 508140

Hooton: 507032, 508127
Chester: 175104/105, 507005/010
Conwy: 175105
28th March:
Hooton: 507005/032
Liverpool Lime Street: 156414, 158865
Edge Hill: 66732
Peterborough: 66768
1st April:
Peterborough: 66540/769, 91119, DVT82209
Holme: 66050
Ferne Park: 66706
King's Cross: 67021
St Pancras:
 373001/002/016/206/231/232, 374010, 395004/06
 395020/26
Stratford International: 395025
Dagenham: 66056
Ashford International:
 395019/21, 466002, DR77315/316
Ramsgate: 375803/915
Margate: 395016
Faversham: 375606, 395008/29
Herne Bay: 375629/828
Birchington-on-Sea: 375802/808/810, 395016
2nd April:
Ramsgate:
 66082, 375310/603/604/628/808/817820//918
 395009/15/20/25
Dumpton Park: 375605
Margate: 375808
Whitstable: 375305/605
Faversham:
 375305/629, 395018/19/28, 465923, 466001
Sittingbourne: 466004/20, DR73937
Gillingham: 465035/172, 466030/33
Ramsgate:
 37884, 375302/308/611/613/628/825/914/916
Dover Priory: 375705/712
Broadstairs: 395015/20
4th April:
Ramsgate:
 375302/303/601/628/802/812/814/815/903/914
 375916, 395017/26
Ashford International:
 DR77315, DRP78223
Singlewell: DX97012/13
St Pancras: 373213, 374003/08/11
King's Cross: 365506
8th April:
Peterborough: 66187
Nene Valley Railway:
 D9523, 31271/452, 41001, D1842/47712, 50008
 56006/098, 60066
9th April:
Whittlesea: 170273
March: DR73117/77907
Bury St Edmund: 170271
Cambridge:
 317501/502/510/653/657/882, 365503, 379028
 DR73919

Ely: 66711, 170273
15th April:
Peterborough:
 37688, 66003/722, 91130, DVT82201, cs 9703
Doncaster: 66112, DR73111
York: 47798, 66302, 373308
Darlington: DR97801/501/601
16th April:
Darlington: 220006
Newcastle: 67018
Edinburgh Waverley:
 43274, 67016, 90049, 158705/710/767/782
 170412/430, 334018, 350404, 380008
Haymarket: 156432, 158724/736/738
Carstairs Junction: DR77001
Shieldmuir: 380012
Cambuslang: DR73932
Polmadie: 08764
Glasgow Central: 314203/10, 380002/105, 390045
Glasgow Queen Street: 334025/32
Garrawhill: 318258
Blairhill: 334007
Caldercruix: 334036
Livingston North: 334034
Uphill: 334018
Edinburgh Park: 334015
17th April:
Darlington: 43277/314
Knottingley: 66092
Doncaster: 66078
18th April: Kings Dyke: 66015
22nd April:
Peterborough:
 37025, 66043/710/755/761/765, 91106/30
 DVT 82225, DR80217, cs 9708
Doncaster:
 66116/703/750/751, 67003, 321414, DR73111
 DR75401/77801
Fitzwilliam: 66030
Leeds: 150137, 185121
Manchester Victoria: 319375
Edge Hill: 66734/742
Liverpool Lime Street: 508103
Rock Ferry: 508111
Spital: 507003
Hooton: 508120
23rd April:
Little Sutton: 508103/137
Hooton: 507008/027
Chester: 158833, 507006, DR73921
24th April:
Hooton: 508140
Eastham Rake: 508120
Spital: 508103
Rock Ferry: 507008/027, 508137
Hamilton Square: 507006
Liverpool Lime Street: 185129
Edge Hill: 66732/742, 390125
Huddersfield: 150132
York: 66302, 91119, 150270, DR82218
Doncaster: 66706/715/749, DR75401

PRESERVATION GALAS

Mid Norfolk Rly (MNR) Spring Diesel Gala, 1st-3rd Apr 2016 by Colin James:

I made a trip to the Mid Norfolk Railway for the Sunday of the 3 day Diesel Gala. The event was blessed with good sunny weather for all 3 days, with good passenger loadings. Locomotives in action from the home fleet were: 47367 & 47596. Visiting locomotives in action were D6836 (37905), 41001, with its matching Mk3 coaches (11074/10206/12092), 50007, 50017, 50050 & 66426. Long term visiting locomotive 45133 had been in use on the Friday & Saturday and the Cl.101 DMU was in use on the Friday working Dereham – Hoe shuttles on the north extension. Two rakes of six coaches were in use on services between Dereham & Wymondham Abbey, with one service extended north to Hoe. One rake comprised blue/grey Mk2s and the other comprised a mixed rake of three HST grey/blue Mk3s (including 41001) and three Intercity Mk2s.



below & right 50007 + D400/50050 t&t
50017 passing Westfield Lane,
Dereham at 09.45 on the 09.40
Dereham – Wymondham Abbey
southbound service



below
47367 t&t 47596 on Danemoor Curve
near Hardingham at 15.04 on the 14.20
Dereham – Wymondham Abbey
southbound service





above & below 41001 (with 'The Screaming Valenta' headboard) t&t D6836 on Danemoor Curve near Hardingham at 14.50 on the 14.25 Wymondham Abbey – Dereham southbound service,



Nene Valley Railway (NVR) Diesel Gala, 9-10th Apr 2016:

Various members attended this Gala on both days. Andrew Buckley on Sat 9th and myself, on my way south following the AGM, along with Colin James and Colin Pottle on Sun 10th.

There were a number of guest locos visiting: prototype HST41001 plus its three newly painted Mk3 coaches, 56006, 56098 (UKRL), 47712, 47192, 50008, 60066 (DBC) and 66768 (GBRf). Resident locos were 31271 (long term hire), D9529 and the Swedish railcar 1212.

Colin James:

I visited the Nene Valley Railway on the Sunday of their spring diesel gala. There was a good supply of visiting engines to supplement the home fleet. These consisted of 31452, 41001 (with its matching Mk3 coaches), 47192, 47712, 50008, 56006, 56098, 60066 & 66768. The home fleet in use was D9520, 9529 & long term visiting engine 31271, with the Swedish railcar 1212.

The Swedish railcar worked shuttles to and from Wansford & Yarwell Jct. The Cl.14s hauled trains from Wansford to Yarwell Jnct, for the main line locos to work back on full line length services to Peterborough Nene Valley. With 3 rakes of stock in use. A 6 coach Mk1 rake, a 4 coach European rake & the 3 coach HST Mk3 rake.

The day started bright and clear with glorious spring sunshine, but gradually clouded over to 100% grey dullness by the end of the day. There was an intense timetable in use with some tight connections at Wansford and with a very good patronage the timings did slip, these not being helped by a points problem at Wansford mid way through the day.

It was a very good gala with plenty of interest. It's been many years since I've seen 47192 or 50008 working and I've not seen 47712 since its repaint into ScotRail livery.



above 47712 approaching Wansford across the River Nene at 09.22 on 2M43 08.55 from Peterborough, 10th April 2016 (Colin James)

Andrew Buckley:

This time of year always arrives with a sense of anticipation for me. The days are beginning to draw out and the weather shows some signs of improving, with hints of the hoped for summer warmth added into the equation. It also marks the beginning of the gala season on the preserved lines around the UK and another opportunity to go and see some of the locos that enriched my younger days as an enthusiast.

I'm lucky to live in a beautiful part of the country in Hardy's Wessex but in rail network terms I am a long way from everything. That therefore means catching the first 05.52 SWT Saturday departure from Dorchester South. However, this train is forming an unwelcome image in my mind as 'The Dorset Red-Eye'. Disturbed sleep on this train is to be expected due to the fiendish train auto announcement programme. Why stations need to be announced three times is beyond me and this is punctuated by other instructions about luggage and from which parts of the train to alight due to short platforms. At times I'm sure I am being advised of something every five minutes. Suffice to say I get off that train frazzled and with significantly raised blood pressure!



above 56006 + 56098 clags away from Wansford with the 11.22 for Peterborough, 9th April 2016 (Andrew Buckley)

Moving on! In previous years I had stayed in Peterborough over this weekend but on this occasion I decided to do the day in one go and so having arrived at the Nene Valley station in good time I was on the 10.50 for Wansford behind two tone green 47192.

left 31271 + 31452 departs Wansford towards Peterborough at 12.16, 9th April 2016 (Andrew Buckley)



As usual action was centred around Wansford with loco changes usually involving the addition of a 'Teddy Bear' in the lead for the Yarwell Junction section and often a 'tail' loco also. This led to some interesting combinations particularly with the prototype HST and I wondered if this did indeed see the first occasion when a Cl.60 was coupled to the prototype HST power car in revenue earning service. The shed area and turntable provided other interest with locos moving from service into this area and back again via the single track adjacent to the station buffet. Early arrivals eating breakfast no doubt had a claggy experience when, in particular, 56006 was making its first positioning moves and providing its very specific and localised climatic conditions!



above 66768 in charge of its first duty of the gala weekend heading for Peterborough with the 16.10 from Wansford, 9th April 2016 (Andrew Buckley)

As has been my luck here in the past a poor mid-week weather forecast gave way to sunny and warm conditions with the cloud base being suitably high enough to allow the half hourly parachute drops from the local aerodrome to take place throughout the day. This enabled me to make my way further down the line at trackside in a Peterborough direction and it was disconcerting to see by the end of the day I had walked some twenty miles. However, it was worth the effort!

This has become one of my favourite gala weekends not only for the variety of motive power in operation but for the 'never a dull moment' feel of the timetabling if you choose Wansford as your main location and as such I would heartily recommend this event to all. I suspect I will be on 'that' train again next year for this event!

Colin Pottle:

This years' spring diesel gala at the Nene Valley fell on the same weekend as the AGM in Shildon. Determined to attend both, I had to wait until Sunday to visit my 'local'.

A cloudless sky greeted me from the off, I always like to get to galas early in order to photograph the plumes of smoke ejected from cold diesel engines as the start button is pushed. Today was no exception, with the added bonus that the prototype HST was also visiting, definitely one to catch, it certainly didn't disappoint, coughing and spluttering into life at 08.03 and sending exhaust some twenty feet into the still air (see photo above by Colin Pottle).



The rover ticket this year was £24.00 for the day, but as I wouldn't be traveling I bought a platform ticket at £5.00 – nice to see that all tickets were being checked, so maximising the amount of money taken on the day – previous visits had been a bit hit and miss, allowing people to wander in and out as they pleased with no tickets at all....*oops that's exactly what we did on arrival, though in defence it was late by then, ed !!*



above 50008 departs Wansford at 11.10 on 2E39 for Peterborough, 10th April 2016 (Colin Pottle)

The gala was very well attended with most trains almost full. Timings were about ten to fifteen minutes off which seems about normal for these galas, I don't envy the guards job of dispatching the trains with a crowded platform to contend with too.

I spent the morning driving to various locations, managing to get photographs of everything I wanted to. Just after midday the sun had turned rather hazy, clouds were threatening and I was exhausted after the long drive the previous day so I decided to rest up for the afternoon and made my way home.



60066 approaches Orton Mere at 09.45 on 1E44 Wansford - Peterborough, 10th April 2016 (Colin Pottle)



having been pulled to Yarwell Jct by D9520 47192 returns to Wansford at 16.12 en route to Peterborough, 10th April 2016 note 60066 having finished for the weekend stabled near the tunnel



the latest view of the restoration of Bulleid BoB 4-6-2 34081 '92 Squadron' with boiler fitted and work ongoing to cab fittings, 10th April 2016

Keighley & Worth Valley Rly (KWV), Sat 27th Feb 2016 by Andrew Woodcock:

Further to the report by Colin James in the April issue Andrew Woodcock has provided the following additional info as to the whereabouts of stock at Haworth:

Main shed: 25059 (body work repairs), 20031, D0226, 08993, 79964, 2-6-2T 41241 (tyres turned at Ilford, boiler at Bridgnorth, SVR), 2-6-0 78022 (boiler at Rileys, Bury), 80002

Yard: 08266 is badly in need of tyre turning and may be stopped when 08993 is back in action

Lineside siding: LYR 0-6-0ST 752

Old goods shed: 2-8-0 90733, 37075

Llangollen Railway (LLR) 'Along Cambrian Line' Gala, 8-10th Apr 2016:

Members Roger Thomas and Martin Evans visited this Gala on the 8th and 9th April respectively.

On the 8th to 10th April 2016 the Llangollen Railway held an 'Along Cambrian lines Gala'. Visiting locos were 2-6-2T 4566 and Manor 4-6-0 7820 'Dinmore Manor'. They were supported by resident locos: Manor 4-6-0 7822 'Foxcote Manor', newly out shopped after a 2 year overhaul, large prairie tank 2-6-2T 5199, BR Std 2-6-4T 80072 and 0-6-0PT 6430. Both Manors were appearing in BR black.



above 4566 + 7822 with the service from Llangollen pass 6430 at Carrog (11.25) 8th April 2016 (Roger Thomas)

right 6430 departs Llangollen at 11.15 with a mixed service for Carrog, 9th April 2016 (Martin Evans)



Manor Class 7820 Dinmore Manor waits to depart Carrog for Corwen East with the 11.50 departure from Llangollen, 9th April 2016 (Martin Evans)

Bluebell Railway (BBR) Spring Diesel Gala, 15-17th Apr 2016:

*Various members attended this Gala over the 3 days and all submitted reports accompanied by photos as shown below. John Bloom attended on Friday 15th, Andrew Buckley on Saturday 16th and Colin James on Sunday 17th. The Gala was held in association with the 15th anniversary of GBRf, hence the preponderance of GBRf traction. I intended to visit on my way back north but started too late, but this allowed a chance to visit the SVR, albeit late afternoon, (see **PRESERVATION PHOTO SPOT**) as we were staying in the Kidderminster Travelodge on the Sunday night.*

Traction for the Gala was provided by the lone Bluebell based diesel shunter 09018, working shuttles with the LNR observation saloon 1503 and / or Queen Mary brake van 56290. This was joined by a selection of the GBRf fleet: 20901, 20905, 66770, 73107 'Tracy', 73119 'Borough of Eastleigh', 73136 'Mhairi' & 73964 'Jeanette'. Other visitors were Colas Rail 47739 'Robin of Templecombe 1938-2013' (on hire to GBRf) and the London Underground 4TC set (76324 + 70823 + 71163 + 76297).

John Bloom: Yes, it is the time again for the Bluebell Diesel Gala (honestly!) and I set off to visit on the Friday, which because of other commitments was the only day it proved possible to get over there. The weather was (to put it politely) 'foul' with torrential rain a lot of the time and strong winds...*tell me about it, we planned a National Trust visit with friends in Lewes so got wet, ed.* Therefore, photo activity was confined to the odd snatched shot, mainly from the cover of an umbrella or station awning and a quick dart into the open air when possible, hence a number of images from more or less the same location. At that time, much of the other locos / trains were only able to be photographed from quite exposed positions and it was just not worth getting a soaking for the rest of the day, hence I only mainly managed images of 73964.



above 73964 + 4TC arriving at Sheffield Park with the 13.20 from East Grinstead, 15th April 2016 (John Bloom)

Andrew Buckley: Another Saturday and another early Spring Gala to head off to with inevitably therefore another ride on the 'Dorset Red-Eye'. Thankfully this time I wouldn't have to suffer the announcements for the full and painful three hours but I would alight, sleep deprived and feeling frayed around the edges again! This time the destination was East Grinstead and a new stretch of track, for me, in the shape of the Bluebell Line. All my connections worked well, including a sprint across the footbridge at Woking, enabling me to arrive at East Grinstead in time for the 10.15 departure for Sheffield Park, with 73136 + 47739 in charge. It was really good to see the sizeable queue for tickets forming at the station and indeed the service train from Clapham Junction I don't think had any passengers for East Grinstead on board who weren't attending the Gala day.

right

09018 + observation saloon 1503
+ Queen Mary brake van 56290,
16th April 2016 (Andrew Buckley)





The first destination on the line was Horsted Keynes which was to be my base for much of the day. A glance at the timetable showed this to be the station at which loco changes would take place in the down Sheffield Park direction and also represented the destination point for the 09018 shuttles from Sheffield Park. All the loco combinations were augmented, when Mk1 stock was in use, by the Cl.73/1s acting as translator vehicle for braking purposes. 73964 was to be in operation with the 4TC unit all day, but was always in pull mode.

above 20901 + 20905 stabled in Horsted Keynes bay at 12.48, 16th April 2016 (Andrew Buckley)

Horsted Keynes itself was a revelation in that it has two island platforms with three tracks seeing service trains on the day, with much in the way of stock stabled around the west of the station. Also the non operational platform acted as a small bay at the south of the station and was used as a stabling point for locos in between duties. The bookshop in the coach on that platform was, sadly, very well stocked, and whilst my bag was heavier on the way home the opposite was true of my wallet!

right 4TC t&t 73964 Horsted Keynes with the late running 15.42 for Sheffield Park, 16th April 2016 (Andrew Buckley)



Apart from the mixed weather on the day the only operational headache that occurred was with 20901 which was failed on the 11.30 from Sheffield Park once the pair had arrived at Horsted Keynes. This resulted in both 20s being removed from that train with 20905 entering service again in the early afternoon. Initially the story was that the loco was suffering from wheel flats but subsequent to that, a more significant wheelset problem was reported that would require a road removal. This caused initial delays of around 45 minutes but by my time of departure this had been pulled back to twenty minutes. This aside I had a really enjoyable day on the line and judging by the standing room only on the trains it looked to have been a success for the sponsors and their chosen charities.

Colin James: I made a visit to the BBR on the Sunday of their Spring Diesel Gala. Unfortunately for those who went on the Sunday, 20901 had been failed with wheelset problems on the Saturday (see *Andrew's report*), then 20905 was stopped with low fuel on the Sunday morning.

It meant on the day that 47739 + 73119 + 66770 + 73136 stayed together as pairs working with the same 2 sets of 6 car SR & BR Mk1 carriages. The third pairing was 73107 + 73964 top and tailing the 4TC set. All these worked the full length of the line. 09018 worked one full line length brake van trip early on Sunday morning, then worked shuttles between Sheffield Park & Horsted Keynes with the Queen Mary brake van and the LNWR observation saloon.

Good weather and a generous timetable gave a relaxed day with plenty of time to photograph and travel on the trains.

66770 + 73136 In Horsted Keynes at 11.30 on the 11.00 East Grinstead – Sheffield Park southbound service, 17th April 2016 (Colin James)



above 73107 + 4TC + 73964 on the 14.50 from East Grinstead arriving at Sheffield Park at 15.55, 17th April 2016 (Colin James)

below 47739 + 73119 In Horsted Keynes platform 2 at 13.28 on the 13.00 East Grinstead – Sheffield Park southbound service, 17th April 2016 (Colin James)



After the gala a stop was made to view Tonbridge West yard with 59003, 66713, 66730, 66738, 73109, 73128, 73962, 73963, 73965 stabled around the yard and 9702 t&t 37219 & 37057 stabled ahead of the weeks test train duties (see photo opposite top).



Trevor Roots: As stated I didn't make it but I did see the convoy assembled in Tonbridge West Yard on the 13th April, see photo right of 73964 + 47739 + 20905 + 20901



GONE BUT NOT FORGOTTEN

This is an occasional series devoted to showing withdrawn and ultimately scrapped rolling stock around the UK. If you have photos and any accompanying info, then please forward to the Editor.

Built for the Woodhead route 57 CI.76 1500v DC Metro-Vickers Bo-Bos (built in the early 1950s, E26000 excepted) were based at Reddish Depot built specifically for the purpose, where the photo below was taken near its end on 5th March 1983 by James Holloway. When the Woodhead route was abandoned in 1981, Reddish Depot continued to service the CI.506 EMUs (see below) but closed on the 30th April 1983. Withdrawn in July 1981 76031 (built June 1952), re-numbered from 76044 (E26044) in March 1976, sits awaiting its fate along with 76051 (E26051) (built January 1953) also withdrawn on the same date. However whilst 76031 survived until February 1984, when it was scrapped by Coopers Metals, Brightside, Sheffield, 76051 met its end not long after this photo was taken, being scrapped at CF Booth, Rotherham.



Driving Trailer Open Second M59605M, in the centre, was a CI.506 1500V DC EMU built by the LNER for Manchester – Glossop / Hadfield service on the western end of the Woodhead route. There were eight 3 car units which never carried set numbers. 59506 was withdrawn in November 1983 when its set was damaged by fire at Longsight Depot, from where they operated after Reddish closed.

STIRLINGSHIRE SIGHTINGS

by Derek Sneddon

The following sightings are from Camelon Station & nearby Carmuir's Junction with an occasional sighting from Falkirk. Only freight and notable loco hauled workings are shown together with the diagram code, time, origin and destination (see location codes)

16th March			26th March (cont)			6th April		
05.10 60021 6H51	OX-IS		13.00 68005 4A13	GM-AB		05.10 60087 6H51	OX-IS	
05.45 66304 4H47	MN-IS		18.11 66511 6K10	CL-Carmont		05.45 68018 4H47	MN-IS	
06.30 66098 6A32	MN-AB		27th March			13.00 66303 4A13	GM-AB	
11.09 37218/607 6K35			13.00 68005 4A13	GM-AB		13.30 66023 6A32	MN-AB	
	MN-Forsinard		28th March			7th April		
13.00 68005 4A13	GM-AB		13.00 68005 4A13	GM-AB		05.45 68016 4H47	MN-IS	
17th March			29th March			08.30 60076 6A65	OX-AB	
05.45 66304 4H47	MN-IS		05.45 68018 4H47	MN-IS		13.00 66303 4A13	GM-AB	
08.30 60087 6A65	OX-AB		06.55 60026 6R46	GM-PW		13.30 60026 6S36	DS-GM	
18th March			08.30 60076 6A65	OX-AB		8th April		
06.30 66076 6A32	MN-AB		13.00 68005 4A13	GM-AB		05.45 68018 4H47	MN-IS	
19th March			13.30 60021 6S36	DS-GM		06.30 66238 6A32	MN-AB	
05.45 66423 4H47	MN-IS		30th March			13.00 66303 4A13	GM-AB	
11.20 66114 4M30	GM-DV		05.45 68018 4H47	MN-IS		13.30 60026 6S36	DS-GM	
13.30 60026 6S36	DS-GM		06.30 66110 6A32	MN-AB		9th April		
18.11 66525 6K10	CL-Carmont		13.00 68005 4A13	GM-AB		05.45 68018 4H47	MN-IS	
20th March			13.30 60021 6S36	DS-GM		11.20 66114 4M30	GM-DV	
13.00 68005 4A13	GM-AB		31st March			13.00 68019 4A13	GM-AB	
20.59 66532 6K05	MN-Carnoustie		05.10 60087 6H51	OX-IS		13.30 60026 6S36	DS-GM	
21st March			05.45 68018 4H47	MN-IS		11th April		
06.50 60021 6D61	GM-RI		08.30 60076 6A65	OX-AB		05.45 66431 4H47	MN-IS	
08.30 60076 6A65	OX-AB		13.00 68005 4A13	GM-AB		08.30 60087 6A65	OX-AB	
22nd March			13.30 60021 6S36	DS-GM		13.00 68019 4A13	GM-AB	
05.45 68018 4H47	MN-IS		1st April			12th April		
06.55 60026 6R46	GM-PW		05.45 68018 4H47	MN-IS		05.10 60076 6H51	OX-IS	
13.00 68005 4A13	GM-AB		06.30 66103 6A32	MN-AB		05.45 68018 4H47	MN-IS	
13.30 60021 6S36	DS-GM		13.00 66303 4A13	GM-AB		06.55 60085 6R46	GM-PW	
23rd March			13.30 60021 6S36	DS-GM		13.00 68019 4A13	GM-AB	
05.10 60076 6H51	OX-IS		2nd April			13.30 60085/26 6S36	DS-GM	
05.45 68018 4H47	MN-IS		05.45 66422 4H47	MN-IS		13th April		
06.30 66066 6A32	MN-AB		11.20 66066 4M30	GM-DV		05.45 68018 4H47	MN-IS	
08.30 60087 6A65	OX-AB		13.00 66303 4A13	GM-AB		06.30 66184 6A32	MN-AB	
13.00 68005 4A13	GM-AB		13.30 60096 6S36	DS-GM		06.30 60026 6B01	GM-RI	
13.30 60021 6S36	DS-GM		3rd April			13.30 60085 6S36	DS-GM	
24th March			13.00 66303 4A13	GM-AB		14th April		
05.45 68018 4H47	MN-IS		4th April			05.10 60076 6H51	OX-IS	
25th March			05.45 68018 4H47	MN-IS		05.45 68018 4H47	MN-IS	
00.30 66106 6H44	MN-IS		13.00 66303 4A13	GM-AB		13.30 60026 6S36	DS-GM	
05.45 68018 4H47	MN-IS		5th April			15th April		
08.30 60076 6A65	OX-AB		05.45 68018 4H47	MN-AB		05.45 68018 4H47	MN-IS	
13.00 68005 4A13	GM-AB		06.55 60026 6R46	GM-PW		06.30 66170 6A32	MN-AB	
26th March			08.30 60076 6A65	OX-AB		08.30 60087 6A65	OX-AB	
05.45 68018 4H47	MN-IS		13.00 66303 4A13	GM-AB				

Location Codes:

AB Aberdeen	AR Abercynon	BO Bo'ness	CE Crewe	CS Cheltenham
AC Achnasheen	AT Abbotstown Jnct	BP Bath	CF Cardiff	CT Cardiff Tidal
AD Alexander Dock	AV Avonmouth	BR Bridgwater	CH Chaddesden	CU Cumbernauld
	AW Abergthaw	BS Bescot	CI Clitheroe	CV Cliff Vale
AE Attercliffe	AY Ayr	BT Barton Hill	CK Chirk	CW Cwmbargeorged
AF Ashford	BA Blair Atholl	BU Burton	CL Carlisle	CY Corby
AH Ashchurch	BD Bedworth	BW Barrow Hill	CM Chalmersston	DC Dyce
AJ Awre Junction	BE Berkeley	BZ St Blazey	CN Camforth	DL Dalmeny
AK Aldwarke	BH Brierley Hill	BY Barry	CO Cottam	DM Dollands Moor
AL Alston	BI Burntisland	CA Calvert	CP Chepstow	DR Doncaster
AN Acton	BL Bristol	CB Coatbridge	CQ Croft Quarry	DS Dalston
AP Appleford	BN Beeston	CD Charfield	CR Cadder	DT Didcot

DU Dundee	HS Hunslet	LY Lindsey	PM St Philips Marsh	ST Stirling
DV Daventry	HT Hastings	MC Machen	PN Paddington	SV Stevenage
DW Dalwhinnie	HU Hunterston	MD Middlesbrough	PO Polmadie	SW Swindon
DY Derby	HV Haverfordwest	ME Montrose	PR Preston	SY Shipley
EA Earles Sidings	HW Heywood Jnct	MF Milford	PT Paignton	TD Tyne Dock
ED Edinburgh	HY Hinksey	MG Margam	PW Prestwick	TE Trostre
EE Elderslie	IB Ironbridge	MH Millerhill	PY Portbury	TF Tremorfa
EH Eastleigh	IM Immingham	ML Motherwell	PZ Penzance	TG Teigngrace
EL Elgin	IS Inverness	MN Mossend	RA Redcar	TH Theale
EU Euston	JM Jersey Marine	MO Moreton	RC Ratcliffe	TJ Tuffley Jnct
ES Earlseat	KB Kittybrewster	MS Maesteg	RD Reading	TK Tavistock Jnct
EV Evesham	KC Kirkcaldy	MT Mountsorrel	RE Redmire	TL Tilbury
EX Exeter	KK Kilmarnock	MV Manchester Vic	RG Rugeley	TN Taunton
FB Ferrybridge	KL Kyle of Lochalsh	MW Moorswater	RI Riccarton	TO Toton
FF Fiddlers Ferry	KM Kemble	NA Nairn	RM Rotherham	TR Trishington
FG Fishguard	KN King's Norton	NE Neath	RN Robeston	TS Tees Yard
FO Forres	KS Kingsland Road	NG Nottingham	RO Round Oak	TU Tunstead
FR Fairwater	KY Kennethmont	NH Newton Heath	RR Rowley Regis	TY Tyseley
FW Fort William	KT Kingsbury	NJ Norton Jnct	RV Ravenstruther	VA Victoria
FY Falkland Yard	LA Laira	NL Newtonhill	RY Rugby	WB Wembley
GC Glasgow Central	LB Ladybank	NT Newport	SA Saltley	WE West Burton
GE Georgemas Jnct	LC Lincoln	NV Neville Hill	SB Stourbridge	WG Wentloog
GL Gloucester	LD Lydney	NW Nantwich	SC Scunthorpe	WH Westerleigh
GM Grangemouth	LG Lairg	OB Oban	SD Standish Jnct	WI Whitemoor
GR Grange Sidings	LH Leith	ON Onllwyn	SF Stud Farm	WM Wemyss
GS Gleneagles	LI Linlithgow	OO Old Oak Common	SG Stoke Gifford	WN Willesden
GW Gascoigne Wood	LK Lackenby	OX Oxwellmains	SH Slough	WP Workop
GY Grimsby	LL Llanwern	OY Oxley	SI Salford	WR Warrington
HA Hayes	LM Long Marston	PA Paisley	SJ Severn Tun. Jnct	WS Worcester
HD Handsworth	LN Laurencekirk	PB Peterborough	SK Shirebrook	WV Wolverhampton
HF Hereford	LO Longsight	PC Port Clarence	SN Stockton	WW Washwood Heath
HH Holyhead	LR Leicester	PF Peak Forest	SO Southampton	WY Westbury
HL Hartlepool	LS Leeds	PG Pengham	SP Spetchley	YK York
HO Halewood	LT Longannet	PH Perth	SR Stourton	YT Yate
HR Harwich	LW Linkswood	PL Polmont	SS Swansea	

GLOUCESTERSHIRE SIGHTINGS

by Nigel Hoskins

The following sightings are mostly from Gloucester Station, but also include workings on the avoiding line southeast of the station between Barnwood and Gloucester Yard Junctions. Only freight and notable loco hauled workings are shown with the diagram code, time (if known) plus origin and destination (see location codes).

15th March		20th March		1st April	
10.57 66301 4V38	DV-WG	20.01 66050 6E30	MG-HL	07.45 66101 6M60	EX-BS
11.08 66006 6V05	RO-MG	21st March		09.45 66726 6V30	GW-PY
11.17 60091 6B13	RN-WH	11.08 60019 6B13	RN-WH	11.11 60091 6B13	RN-WH
12.25 60092 6B41	WH-LY	22nd March		12.40 68004/02 1Z82	OO-BY
16th March		04.35 66130 4V32	IM-ON	2nd April	
05.47 66170 6M03	RN-BD	09.10 66715 6V80	GW-PY	09.39 66018/183/037/	
11.06 66427 4V38	DV-WG	12.23 60091 6B41	WH-RN	177/199 OX42	MG-BS
11.27 66708 6V80	WE-PY	19.31 66040 6V69	BS-AD	11.06 60092 6B13	RN-WH
14.17 57305/37419 6M63	BR-CE	20.16 66050 6E30	MG-HL	14.00 66301 4V38	DV-WG
15.04 66197 6V92	CY-MG	20.25 66301 4M36	WG-DV	3rd April	
20.15 66507 4V18	WW-FR	20.33 66131 6V65	SA-CT	17.19 66109 6E47	MG-MD
17th March		21.27 66130 6E09	ON-IM	4th April	
06.00 66046 6M90	AV-CI	21.36 66713 6E35	CF-PC	08.27 66011 6M81	MG-RO
09.05 66743 6V80	GW-PY	23rd March		10.50 66427 4V38	DV-WG
11.11 66301 4V38	DV-WG	02.31 66125 6M03	RN-BD	11.01 60010 6B13	RN-WH
11.33 66131 6V05	RO-MG	03.31 66165 6M11	MG-RO	12.23 60092 6B41	WH-RN
18th March		10.26 56087 OF84	WW-CF	14.56 66194 6V92	CY-MG
09.11 66015 6M96	MG-CY	10.50 66427 4V38	DV-WG	17.07 66117 6V35	BS-AV
10.55 66427 4V38	DV-WG	11.10 60019 6B13	RN-WH	20.01 66089 6V55	BD-RN
17.14 66018 6V35	BS-AV	16.22 66111 6Z39		20.05 66018 6E30	MG-HL
20.40 66536 4V18	WW-FR	MO-Humberstone Rd		22.28 60100/66086 6V81	RM-CT

5th April			11th April (cont)			15th April (cont)		
09.12 66726 6V30	GW-PY		09.56 DR75406 6J83	Maindee-RY		04.34 66708 6V60	PC-CF	
6th April			10.51 66421 4V38	DV-WG		05.45 66162 6M60	EX-BS	
10.50 66429 4V38	DV-WG		10.58 60092 6B13	RN-WH		08.59 66720 6V80	WE-PY	
11.02 66181 6V35	RO-MG		11.08 66002 6V05	RO-MG		10.50 66425 4V38	DV-WG	
11.12 60092 6B13	RN-WH		12.50 60047/70808 0Z84	BS-CF		11.14 60066 6B13	RN-WH	
14.57 66113 6V92	CY-MG		12.57 66953/561 6X04	FR-CE		11.53 66601 4V09	YK-SG	
7th April			15.00 66181 6V92	CY-MG		16th April		
02.01 66019 6M94	MG-CY		16.26 60066 0F85	SA-MG		07.07 66536 4C60	AW-GL	
03.43 66124 6M11	MG-RO		20.15 66152/60100 6E30	MG-HL		11.03 60091 6B13	RN-WH	
08.30 66113 6M81	MG-RO		23.23 66079 6E20	LL-IM		11.17 70804 6C20	WY-AH	
09.05 66726 6V80	GW-PY		12th April			12.07 57313/47851 1Z42		
10.19 66427 4V38	DV-WG		08.53 66181 6M81	MG-RO			North Walsham-WS	
11.01 66124 6V05	RO-MG		11.01 66011 6V05	RO-MG		12.45 67028 1Z29		
11.12 60092 6B13	RN-WH		12.00 66091 6B41	WH-RN			Clapham Jnct-GL	
12.55 37610/069 6M63	BR-CE		13.12 60092 6B13	RN-WH		13.10 70806/802 6C22	WY-AH	
22.28 66087 6V81	RM-CT		14.59 66087 6V92	CY-MG		17.00 67028 1Z30	GL-Stevenage	
66136 6M90	AV-CI		13th April			17th April		
8th April			11.03 66011 6A05	RO-MG		08.45 70802 6C22	Alstone-WY	
04.17 66002 6M03	RN-BD		11.40 60066 6B13	RN-WH		09.27 70806/804 6C20	Alstone-WY	
08.29 66089 6M81	MG-RO		14.56 66002 6V92	CY-MG		14.10 66421 4V38	DV-WG	
11.05 60092 6B13	RN-WH		19.52 66176 6V55	BD-RN		17.27 66056 6E47	MG-MD	
15.01 66121 6V92	CY-MG		14th April			20.01 66171 6E30	MG-HL	
9th April			08.42 66110 6M81	MG-RO		18th April		
00.49 57313/316 5Z32	GL-NT		10.50 66421 4V38	DV-WG		04.15 66097 6M03	RN-BD	
05.07 66183 6V49	TS-MG		10.57 66560 4V09	HS-SG		10.55 66425 4V38	DV-WG	
11.41 60091 6B13	RN-WH		11.02 66152 6V05	RO-MG		11.03 66176 6V05	RO-MG	
14.55 47830 5V56	KK-LA		11.14 60066 6B13	RN-WH		11.13 60091 6B13	RN-WH	
21.52 66419/546 6Y19			18.21 66011 6V06	HD-CT		14.59 66113 6V92	CY-MG	
	FR-Pontyclun		20.07 66030 6E30	MG-HL		16.53 60047 0F55	CF-TO	
10th April			22.57 66063 6E09	ON-IM		19th April		
07.53 DR80211 6Y31	GL & return		15th April			08.46 66750 6V80	GW-PY	
09.12 66546/419 6Y19			00.22 66152 6M94	MG-CY		10.51 66421 4V38	DV-WG	
	Pontyclun-FR		00.30 66148 6M39			11.01 66110 6V05	RO-MG	
11.38 66427 4V38	DV-WG			MO-Humberstone Rd		11.12 60091 6B13	RN-WH	
11th April			01.44 66097 6V02	TS-MG		12.02 60066 6B41	WH-RN	
08.25 66183 6M81	MG-RO		03.02 66147 6V19	IM-LL		15.02 66030 6V92	CY-MG	
08.45 66726 6V80	WE-PY		03.17 66132 6M11	MG-RO		16.08 66097 6M41	LL-RO	
			03.37 66176 6M03	RN-BD				

FORGOTTEN WAGONS

A wagon that has been sitting for between 25 and 30 years in the old siding at Cleland station, on the Glasgow to Edinburgh via Shotts route has recently re-appeared, from the vegetation that enveloped it, when the area was being cleared ready for the electrification of the route. It is **YRW Bogie Car Transporter Flat 745232** (in **UK wagons 2016**). In the photo below taken by Iain Gardiner on the 9th April 2016 the wagon is seen surrounded by tree stumps.



LIGHT RAIL & METRO NEWS

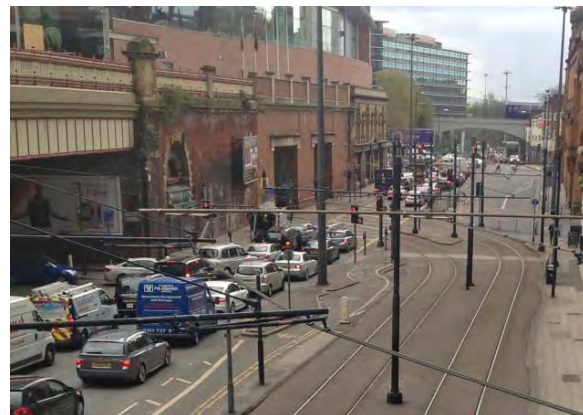
Metrolink by Geoff Hope:

The beginning of April saw the turn of the Rochdale line to experience tram v car incidents. On the 27th March and the 11th April collisions between the railway station and the town centre closed the line for approximately one hour on each occasion. No injuries were reported. Tram 3090 was involved on the 11th April incident. On the 1st April a car was crushed between tram 3099 and a lamppost in Wythenshawe on the Airport line. Driver and passengers in the car were slightly injured no passengers on the tram were injured. It was reported the car driver had been 'reported for numerous offences.' At a cost of £20,000 more signage and road markings have been installed at one of the hot spots on the network at Holt Town on the Ashton line. The additional signage is over and above the required current regulations in the hope this will deter drivers taking a wrong turn onto the tracks. If this proves successful more signage will be put in place at other hot spots on the network and hopefully reduce the number of incidents reported.

A career criminal on the country's most wanted list was caught after 10 months on the run when stopped by members of the Travel Safe unit at New Islington on the Ashton line. He refused to give his name and address for failing to buy a ticket so after a fingerprint test on a mobile reader all was revealed.

10t sections of reinforced concrete were installed during week commencing 11th April for the St.Peters Square tram stop for the first of two island platforms at the junction of the two cross city lines (see photo right taken on the 27th April). During this work redevelopment of the square will take place to turn it into a more pedestrian friendly space, including planting of new mature trees around the stop.

The 24th April was not a good day as first there was a further tram v car incident at Exchange Quays on the Media City / Eccles line, no injuries were reported, then a coach got stuck on the lines close to Exchange Square tram stop and a points failure occurred at Miles Platting on the Oldham / Rochdale line.



The 25th April was a day to forget due to 'technical problems' at Old Trafford control room as staff were unable to monitor tram movements or access information displays, resulting in a complete closedown of the network for approximately four and a half hours.

Piccadilly Undercroft, the tram stop at Piccadilly Station, is protected on London Road by the usual signage and traffic lights with a yellow box junction to help keep clear the entrance and exit to the stop for trams arriving and departing (see photo left). Over a period of two hours on three separate days during rush hour

CCTV cameras covering the area recorded over six hundred vehicles entering the box when the exit wasn't clear. Cars are allowed into yellow boxes if the exit road is clear or enter to turn right which isn't possible at this point due to no right turn signs into Whitworth Street.

Tram 3058 received a Sainsbury advertisement livery in April.

Trams 3113 & 3114 arrived at Queen's Road depot on the 2nd & 16th April respectively. The first day of service for trams 3112 & 3113 were the 9th & 23rd April respectively, on the Rochdale - Ashton service.

Observations for Wednesday 27th April were as follows: (92 trams in service)

Cornbrook 07.25-09.00:

Bury - East Didsbury: 3002+3049, 3007+3016, 3011+3024, 3012+3029, 3027+3034, 3030+3046, 3031+3059, 3043+3048, 3044+3045, 3054+3055

Altrincham - Ethiad Campus: 3003+3014, 3004+3008, 3005+3057, 3017+3047, 3019+3037, 3025+3056, 3033+3036, 3041+3051

Altrincham-Deansgate/Castlefield: 3009/3013/3021/3023/3040

Eccles / Media City - Piccadilly:

3018+3042, 3066+3082, 3068+3069, 3074+3077, 3078+3092, 3084+3086, 3089+3096

Manchester Airport - Cornbrook: 3006/3052/3053/3061/3065/3073/3080/3097

Old Trafford Depot 09.10-09.30: 1020/1023, 2001, 3022/3060 & 3091

Queens Road Depot 10.15-10.40: 1027/1028, 3039/3070/3072/3075/3087/3095/3101/3102/3103

Victoria 10.50-12.35

Bury - Piccadilly: 3010/3015/3020/3026/3035/3050 & 3058

Shaw & Crompton - Exchange Square: 3001/3032/3083/3098/3105/3106/3107

Rochdale - Ashton:

3064/3076/3079/3085/3088/3090/3093/3094/3104/3108/3109/3110/3111/3112/3113

Trams not seen: 3028/3038/3062/3063/3067/3071/3081/3099/3100/3114

London Tramlink:

The last Variobahn tram 2563 has entered service as seen right on the 23rd April 2016 by Graham Stockton at 11.08 by East Croydon station.

Angus Adams



Midland Metro:

As reported in the January 2016 issue here is the nameplate from the only Urbo 3 so far named, taken by James Holloway on the 25th April 2016 at West Bromwich Central.

PRESERVATION PHOTO SPOT - DIESEL

Having moved into preservation at the Severn Valley Railway from Barrow Hill in 2013, 09012 'Dick Hardy' was repainted into BR green livery and reunited with its former D4100 number in June 2015. As not previously illustrated in its new guise here it is on Kidderminster Depot on the 17th April 2016.



FREIGHT MATTERS

To allow members to keep their copy **UK Wagons** as up to date as possible, changes are provided via this spot every month. Please let Trevor Roots know if you have any amendments or wish pass on any other helpful wagon information, contact details on page 2.

As promised **UK Wagons 2016** has been released, but already new additions have appeared.

Thanks to the following for information: Alex Ford, Mike Rumens

New / Added to TOPS:

HOA Bogie Aggregate Hopper 81.70.6957.012-2 to 052-8 en route to the UK for Tarmac

JNA Bogie Box 81.70.5500.054 to 073 delivered to Long Marston for GBRf

MMA Bogie Box 81.70.5500.074 to 103, **JNA Bogie Box** 81.70.5500.104 to 164 yet to be delivered

IIA Bogie Covered Biomass Hopper 83.70.0698.201/213/219-25 (in new book)

Out of Store: 200737/820/877/959, 210105/138/191/271/338/387, 83.80.4741.128-8

Converted / Re-coded: **MXA Bogie Open Box** 950002/0208/0384/0414/0415/0522/0704/0795/0796 0805/0888/0903/0917/0936/1007/1063/1098/1127/1157/1244/1728, 965043/61/75/79 with RIV numbers

82.70.4703.181-6/179-0/177-4/185-7/171-7/178-2/174-1/191-5/168-3/176-6/183-2/184-0/164-2/

163-4/169-1/170-9/167-5/165-9/180-8/166-7/175-8/173-3/172-5/187-3/186-5 respectively

Re-suffixed: **JJA Bogie Autoballaster** GERS to NR 12928/31/47/51/59/74/85/89/91

OTP News:

New: The fifth recently delivered RailVac, 99.70.9515.005-5 is seen passing Doncaster Decoy Yard on the 10th April 2016 in the photo below.



Out of Store: DR72211/13

FREIGHT NEWS

GBRf is to lease a further 15 FWA Shortliner Ecofret triple container wagons 83.70.4520.xxx-x & 83.70.4521.xxx-x which will be built by Greenbrier in Poland for delivery in the summer 2016.

The 24 VTG owned KFA ex-gypsum container flats, 600000-23 of which 19 are stored in York Yard are to be refurbished for further intermodal use.

HYA Bogie Coal Hopper 371051 has been shortened and is on trial



above new MXA 965033 (82.70.4703.087-5) converted from former BMA Bogie Steel Plate Carrier Toton Yard, 23rd April 2016 (Neil Dix)



above not previously illustrated 6wh Articulated Single Deck Car Carriers PFAs 92339 + 92338 with Donelli PD350 Single Line Track Relays 78416 & 78417 respectively, Toton Yard, 23rd April 2016 (Neil Dix)
note the wagon in the foreground is YQA PARR DC 967566



above new HOA Bogie Aggregate Hopper 81.70.6957.004-9 Toton Yard, 23rd April 2016 (Neil Dix)
the full rake of 12 wagons hauled by 66005 + 66529 was 81.70.6957.000-7/006-4/005-6/001-5/011-4/008-0/004-9/003-1/010-6/007-2/002-3/009-8



above with newly applied yellow vinyl over an otherwise careworn body, JJA 12902 is one of several NR autoballasters receiving this new 'livery', Toton Yard, 3rd April 2016 (Neil Dix)
note that the prefix has been amended from GERS to NR

STOCK CHANGES

*It is hoped that all major changes recorded below will help you keep the **UK Combine**, **Pocket Book** and **Name Directory** up to date, (numerous pool code changes will not be recorded). In order to compile as accurate and up to date list as possible, can members please pass on their observations, particularly name changes and multiple unit reformations to the editor, **Trevor Roots**. Where possible photos of new nameplates will be included as and when a suitable photo is sourced from members.*

Misc. News:

58012 & 58023 have moved on from the scrap line at Ron Hull Jnr to the Battlefield Line. The photos below by Phil Bonsall show them at the former location on the 12th April 2016.



37254 made its debut for Colas Rail on the 25th April 2016.

DMU 51655 has moved between private sites and is now at Thomas Muir, Port of Rosyth.

New:

Locos: 68023 68024 68025

EMUs: (* on test)

387218* 387219* 387220* 387221*

387222* 700002* 700102* 700103*

700112*

Re-formed & Re-Numbered:

Transferred:

Locos: (* into preservation, # from preservation)

01546 BSS to EKR

2001 (20035) CVR to GWR

37510 BH to LR 37670 BH to LR

58012/023 Ron Hull Jnr to BAT

D8110 BSS to ELR D6515 BO to SWR

47812/815 Doncaster to BH

47843 Doncaster to BH then BO

DMU: 59701 CHV to ELR

Steam: (CHC should be CQ, error in Pocket Bk)

14 NRS to NRM 990 BSM to NRM

44027 GWR to VBR 44901 WA to VBR

69023 HCW to WEN 92134 CHC to ELR

Names:

New: (* re-applied)

08663 *St Silas*

08721 *Longsight TMD* (trs from 08611)

08617 *Steve Purser* (trs from 08790)

37403 *Isle of Mull*

50050 *Fearless*

68020 *Reliance* 68023 *Achilles*

68021 *Tireless* 68024 *Centaur*

68022 *Resolution* 68025 *Superb*

90019 *Multimodal*

Mk1 1566 *Caerdydd*

St. Silas

08663 (Neil Dix)

Recent But Not Previously Illustrated:

**Blwch Signalau Panel Caerdydd
1966 - 2016**

**Cardiff Panel Signal Box
1966 - 2016**

43141 as reported in Ap 2016
(Colin Pidgeon – Welsh, Bill Wilson - English)

Graham Stenning

73202 as reported in Jan 2016 (Bill Wilson)

The Pride of Bellshill

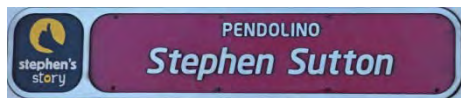
90018 as reported in Jan 2016 (Roger Thomas)

Fearless

68016 as reported in Nov 2015 (David Williams)

Hornet

68017 as reported in Nov 2015 (Colin Pottle)



390002 as reported in Oct 2015 (Colin James)



55007 (55022) as reported in Jul 2015

Removed:

08790 Steve Purser

For Scrap: (Cl.460 driving cars)
CF Booths, Rotherham 67903/908

Scrapped:

TJ Thompson, Stockton 47540 (body only)
LHG 08393
Swansea Docks DEMU 60138 (1313)

The following is an updated list of namings (following the first list in the April 2016 issue) that are new or have occurred since 2011 that we have not yet illustrated. Please note I only want in focus, straight centred side on shots of nameplates. Also listed are new locos for which I still need photos.

Missing Nameplate Photos: (* re-applied) (# supplied but not straight or in focus)

Locos:

08499 *Redlight*
08611 *Longsight TMD* (since removed)
08721 *Longsight TMD*
20227 *Ed Cluderay* (temporary)
D5061 *Ian Johnson*
D6508* *Eastleigh*
33102 *Sophie*
37403 *Isle of Mull*
60020 *The Willows*
60087 *CLIC Sargent #*
66739 *Bluebell Railway #*
73951 *Malcolm Brinded*
73952 *Janis Kong*
73963 *Janice*

68025 *Superb*
90019 *Multimodal*

EMUs:

3CEP 1198 *Linda the Lymington Flyer*
395011 *Katherine Grainger #*
395019 *Jessica Ennis #*
507021* *Red Rum* (cast yellow plate)

Track Machines:

DR 73939 *Pat Best*
DR 98923+98973 *Chris Lemon*

Coaches:

351 *Sapphire*
1566 *Caerdydd*

New Loco Photos: 66767/773/774/776-779 (new livery when revealed), 68020-25



NEW STOCK

we should get better views of the new Cl.68s in due course but here are shots on DRS Carlisle Kingmoor Depot of
left 68020 (20.07) 30th April 2016 (Iain Gardiner) and
below 68022/023/021 with I believe 68024 behind 68023 (13.01) 19th April 2016





387221 approaches Wellingborough on Derby Litchurch Lane – Bletchley
(15.45) 14th April 2016 (Colin Pottle)



above 800002 (815002) + 800001 (leading) on 5X80 08.36 Old Dalby - North Pole, Gospel Oak,
(12.02) 11th April 2016 (Colin James)
this is the first daylight run of two units paired together on NR tracks

TRANSFERRED / EXPORTED STOCK

right former DRS Daventry
Terminal super shunter 37714
now preserved at
Loughborough Central
on the Great Central Railway,
10th April 2016



left
37188 awaiting refurbishment
for Colas Rail, as moved
from Peak Rail, Barrow Hill
10th April 2016



right 26040, now painted BR blue and having moved from the private haulage yard at Methil Docks in March 2016, now sits at the current southern end of the line on the Waverley Heritage Route at Whitrope, this photo shows the opposite end to that shown on p13 in the September 2013 issue



left as reported in the April 2016 issue, 86235 has been exported via Hull Docks and was collected by low loader from Barrow Hill 31st March 2016 (Terry Lea)

right D2853 & 07012 sit in the roundhouse at Barrow Hill having moved from the Appleby & Frodingham Railway based in Scunthorpe steelworks, 10th April 2016



below the bodyshell of 66048 on stands at Longport, 23rd March 2016 (Terry Lea)



LIVERIES

*This section will endeavour to show all new liveries / variations or those existing ones where not carried on the stock before. Liveries that become 'extinct' will also be covered. As with names, it may take a while after the livery application before a photo is sourced from members. New liveries may also be shown in other articles. See 66423 & 66748 in **EASTLEIGH WORKS REPORT**.*



as shown last month car 65235 from LMT 350235 has received BTP vinyls with info panels above all windows on the other 3 cars, Northampton, 25th April 2016 (Graham Stockton)



left
150247 the second CI.150/2
in GWR green livery
on 2G83 Swindon - Cheltenham Spa,
Swindon
(11.20) 16th April 2016
(Colin Pidgeon)



right
82127 the latest Mk3B DVT in
Abellio livery on the rear of 1P59
18.00 Norwich - Liverpool Street,
Ipswich, (18.48) 14th April 2016
(Keith Partlow)



above both driving cars of 390040 are adorned in another Virgin promotional livery, 1B17 11.30 Birmingham New Street – London Euston, South Kenton (12.47) 9th April 2016 (Colin James)



right with the DRS Cumbrian services now operated by a CI.37 t&t a Mk2 DBSO, 9710 in DRS livery is now operational, as reported in the February issue, as seen at Silverdale on the 05.15 2C32 Carlisle – Preston service t&t 37401, (08.57) 19th April 2016



above TPE have applied plainer revised branding to the sides of their CI.185s as seen with 185145 at Church Fenton 2nd April 2016 (Mike Brook), compare with photo of original branding



left
43014 carrying new branding
'Improving Your Railway',
Abington,
(08.35) 27th April 2016
(Iain Gardiner)

right 43002 partially repainted with
yellow cab roof for St Phillips Marsh
open day, Swindon on the rear of
IL60 Cardiff – Paddington
(14.00) 25th April 2016
(Colin Pidgeon)



NEIL
Neil Morgan 1964 - 2014
Team Leader O.O.C.

SCOUSEY
Neil Morgan 1964 - 2014
Team Leader O.O.C.



above re-liveried in February 2016
and named in September 2015 (reported in October
2015 issue), 08483 is seen at Paddington with ecs
stock to OOC (07.01)
9th April 2016 (Colin James)



left not a perfect angle, but not previously illustrated
purple (20168) 'Sir George Earle'
and with a big number 2 on the cabside,
is awaiting attention by HNRC at Barrow Hill,
its normal base of operation is Lafarge Hope Cement
Works, 10th April 2016



above 66746 in Belmont Royal Scotsman new livery passing Gospel Oak at 12.14 on 09.30 OE66 Eastleigh Works -
Doncaster Roberts Rd,
11th April 2016 (Colin James)

right 08834 was repainted into HNRC livery in December 2015, Barrow Hill
10th April 2016



above 375306 showing the new SET livery from the first class end (see 375305 in November 2015 issue)
Tonbridge 13th April 2016



above D400 / 50050 not illustrated since its repaint and return to service (last shown in the March 2015 issue p17 on its way from Yeovil Jct to Washwood Heath) and re-united with its nameplate,
MNR Gala, Crownthorpe, 3rd April 2016 (Colin James – loco, Bill Wilson - nameplate)

ICRS SALES

We have now published 10 books since 2009, 5 of which are in print and currently available, 2 are currently unavailable having sold out and 3 are no longer produced. All 2016 new editions (maroon covers) have been released. Those due to be released as new editions will be shown at the relevant time (see below).

Books can be ordered either:

online via PayPal at www.intercityrailwaysociety.org
or by post from (please make cheque / PO payable to ICRS)

Carl Watson, ICRS Publications, 14, Partridge Gardens, Waterlooville, Hampshire PO8 9XG

All books, except **UKRS01 Pocket Book**, are A5 wire bound printed on 90gm paper with plastic coated covers allowing them to be laid flat.



BOOKS: (all Members receive up to 30% discount on ICRS books)

BOOKS: <i>(all Members receive up to 30% discount on ICRS books)</i>			Prices	
			Member	Non Member
Titles:		Updated to		
New:				
UKRS01	UK Pocket Book 2016	(1 st Mar16)	£7.50	£10.50
UKRS02A	UK Combine 2016	(21 st Jan16)	£12.00	£16.50
UKRS03	UK Wagons 2016	(1 st Apr16)	£9.50	£13.50
Others:				
UKRS04	UK Name Directory	(1 st Dec14)	£10.50	£14.50
UKRS09	Irish Railways 2015	(1 st May15)	£7.00	£9.50
UKRS10	Ultimate Sighting File Vol.1 – Mainline Diesel Locos	SOLD OUT (next ed. due 2017/18) (27 th Sep13)		
UKRS11	Ultimate Sighting File Vol.2 – Shunters, Mainline Electric & Prototype Locos	SOLD OUT (next ed. due 2017/18) (27 th Sep13)		

SUNDRIES:

Pocket Book cover		£1.50	£2.50
TRACKS A5 Cordex binder (takes 12 issues @ 48 or 64 pages – 2014 onwards)	LARGE	£7.50	£9.99
TRACKS A5 Cordex binder (takes 12 issues @ 32 or 40 pages – 2011-13)	MEDIUM	£7.50	£9.99
Navy & White Polo Shirts SMALL / MEDIUM / LARGE / XL / XXL		£18.00	£25.00