

TRACKS



Inter City Railway Society – Sep / Oct 2017



Inter City Railway Society

founded 1973

www.intercityrailwaysociety.org

Volume 45 No.7

Issue 535

Sep / Oct 2017

The content of the magazine is the copyright of the Society

No part of this magazine may be reproduced without prior permission of the copyright holder

President:	Simon Mutton - simonmutton@btinternet.com (01603 715701) Coppercoin, 12 Blofield Corner Rd, Blofield, Norwich, Norfolk NR13 4RT
Treasurer:	Peter Britcliffe - treasurer@intercityrailwaysociety.org (01429 234180) 9 Voltigeur Drive, Hart, Hartlepool TS27 3BS
Membership Sec:	Colin Pottle - membership@intercityrailwaysociety.org (01933 272262) 166 Midland Road, Wellingborough, Northants NN8 1NG Mob (07840 401045)
Secretary:	Christine Field - secretary@intercityrailwaysociety.org contact details as below for Trevor
Chairman:	filled by senior officials as required for meetings
Magazine:	
Editor:	Trevor Roots - editor@intercityrailwaysociety.org (01466 760724) Mill of Botary, Cairnie, Huntly, Aberdeenshire AB54 4UD Mob (07765 337700)
Sightings:	James Holloway - sightings@intercityrailwaysociety.org (0121 744 2351) 246 Longmore Road, Shirley, Solihull B90 3ES
Photo Database:	Colin Pottle
Books:	
Publications Manager:	Trevor Roots - publications@intercityrailwaysociety.org
Publications Team:	Trevor Roots / Eddie Rathmill
Website / IT:	
Website Manager:	Trevor Roots - website@intercityrailwaysociety.org contact details as above
Social Media:	Gareth Patterson
Yahoo Administrator:	Steve Revill
Sales Manager:	Christine Field contact details as above for Trevor
Visits Co-ordinator:	Mark Hall - visits@intercityrailwaysociety.org (0113 2363174) 95 Littlemore Road, Pudsey, Leeds LS28 8AN (07917 714693)

Contents:

Officials Contact List.....	2
Society Notice Board.....	3-4
Events.....	4
ICRS Sales	64
Regular Current News / Sightings:	
Eastleigh Works Report.....	5-10
Franchise / Network News.....	60
Freight Matters.....	63-64
Infrastructure News	39-41
Light Rail & Metro News	61-62
Out & About Sightings	44-49
Stock Changes.....	66-67
Converted Stock.....	70
Liveries.....	76-79
New Stock.....	71-75
Transferred Stock.....	68-69
Traffic & Traction News	11-24

Other Feature Articles:

Days Out.....	42-43
Depot Photo Spot.....	24
Eastleigh Members Visit.....	25-31
Location Spot'Light.....	38
Narrow Gauge Photo Spot	31
OOC111 Open Day.....	50-59
Preservation:	
News.....	32-38
Photo Spot - DMU	62
Photo Spot - OTP	64
Photo Spot - Steam 1.....	49
Photo Spot - Steam 2.....	60
Photo Spot - Wagon & EMU	65
RHTT News	10
Signal Box Survey.....	41
Underground News	43

Front Cover Photo:

4-6-2 70013 'OLIVER CROMWELL' + Mk2 14064 with 50026, 14901, 50017, 50007 behind and 57604 to the right in the pre-opening sunshine, OOC111 Open Day, 2nd September 2017

£3.00 where sold separately

Printed & distributed in the UK by Henry Ling Limited, at the Dorset Press, Dorchester DT1 1HD

SOCIETY NOTICE BOARD

Editor's Comments:

As it turned out the decision to not do a September issue was fortuitous as whilst travelling home from 5 days away visiting Finmere for their Gala (see report elsewhere) and picking up the remainder of my Mom's possessions from East Sussex, we got a call from the back of an ambulance on its way to Aberdeen...it was Mom. Turns out she had a mini stroke on top of a mishap a few days earlier in a courtesy car whilst her mobility car was in for repairs. Long story short she is now partially blind and we have been non-stop organising various medical and social care help before we were back on the road south for OOC111 and Eastleigh (see reports elsewhere). Due to the ever increasing accidents they have also been convinced to stop driving, well Mom had to anyway. This does mean we are now a taxi service impacting on our time.

So we were then straight into getting ready for the OOC Open Day and our visit to Eastleigh and having returned from these successful events I had about a week to ourselves but that was taken up with hospital visits...break, what break ! So apologies again for the delay and change of plan but as you can see it is a nightmare finding time. I have literally been on this issue glued to the computer for 14 solid days either side of 5 days away to attend a Golden Wedding Anniversary in Eastbourne on the 30th September. In fact as I finish this on Sunday the 8th October we are only two days away from starting our travels down for the NVR Cl.31 Gala, an article on which will appear next month. The intention to release an 80 page issue together with the 32 page autumn supplement has been scuppered for the reasons above and for a problem in printing. Because of time constraints I hadn't fully investigated how our printers would be able to print the two mags simultaneously so they could be posted together, the whole point of the idea. It appears they have to be processed one after the other so I need to have the supplement already done and away so that is printed and ready to receive the normal issue which I work on right up to the point I send away with the up to date info. As I hadn't any even worked out what I was putting in the supplement as articles had still to be written, you can see the plan failed miserably so the supplement will now appear next month. I have had to bump **PRESERVATION GALAS** to next month but at least I have articles already penned and have written up articles by others including on the Pallot Museum, Jersey under **RAILWAY & MUSEUMS**. Plus **RAILWAY GLOBETROTTERS** will return in either the main mag or the supplement. At least this experimentation with 80 pages and also trying to do a supplement has helped in understanding the time / printing issues so that the full implementation in 2018 should go smoother...assuming my life doesn't get in the way again !!

The one fact that has emerged yet again is that I desperately need articles by you. Apart from the handful of stalwarts who submit regular reports and articles it is down to me to fill the pages and these articles are largely the result of my travels so can't be pre written, hence why I have also struggled this month with multiple events to report with associated photos to process. There must be members with stories to tell of your interesting travels or railway related work experience. Look back at previous **TRACKS** and see what has been done or if you can submit something in one of the series s like **GONE BUT NOT FORGOTTEN, THEN & NOW, RAILWAY & MUSEUMS, OFF THE BEATEN TRACK** Many of you must see odd railway stock around the country or visit museums. Find that interesting old photo and re-visit for an up to date photo. Many of you must have photos of withdrawn locos or just nostalgic look back at workings from 30 or 40 years ago. Remember it is highly satisfying to submit something that will be enjoyed by nearly 1100 members.

Not only keeping on top of my photos and those submitted so they can be used in **TRACKS** the pace of change on the railways is relentless and trying to keep up with events is almost now impossible. There is so much to read and digest with an eye on details of new stock to include in our books. I thought keeping the Wagon book up to date was difficult ...that's seems a doddle now. Oh and there are those book / sundry orders to send out !!

Sadly David Shepherd died on the 19th September 2017, aged 86. He preserved BR Std 9F 2-10-0 92203 and BR Std 4-6-0 75029 and had a significant role in setting up the East Somerset Railway where they were based after a stint at the Longmoor Military Railway which closed forcing their move. His railway paintings of the last days of steam, particularly of decaying sheds are some of the most atmospheric ever done and I personally have always hankered after one.

Membership Matters:

New Members: (* ex-members re-joined)

Peter Beckett (Nottingham), Nick Blackman-Hayward (Bishop's Stortford), William Bruck (Telford), Bill Cartledge (Cheadle), Gary Clare (Wigan), Rodney Coles (Eastleigh), Keith Cox (Newport), Sean Davies (Worcester), Glenn Doig (Tunbridge Wells), Thomas Glyde (Southampton), Ricky Harden (Southsea), Malcolm Hooper* (Plymouth), David Lazowski (Weston-super-Mare), Emma Lewis (Eastleigh), Fred Lymer (Kidderminster), Nick MacPherson (Dawlish), Melvyn Melluish (Exeter), Ian Minshall (St. Leonards-on-Sea), Daniel Mitchell (Crediton), Stephen Nock (Bishop's Stortford), Philip Pearson (Leigh), Tony Peters (Didcot), Michael Pickering (Wakefield), Graham Rouse (Leicester), Colin Scott* (Northampton), David Thompson (Darlington), Richard & Henry Warne (Ramsgate), David Watts (Cheltenham), Richard Whitehead (South Wingfield), Jonathon Whiting (Swadlincote), Tony Williamson (Llangollen) - a warm welcome to you all.

Obituaries: Sadly we recently have lost Trevor Bennett from Folkestone and John Miles from Rugby. Condolences go to their families and friends.

Family Membership: Following a request at the DRS Open Day we have re-created a new Family Membership where a member can add a child (age 10-16) onto their membership for an additional £5 instead of them having to pay full rate. So for £22.50 (Standard Membership) or £21 (eMembership) both then get one copy of **TRACKS** but it allows both to attend Member Only Visits (normal separate fees apply). Ideally this is best done on joining or renewal and the membership number will be the same for both. This is a way to encourage more younger members and it helps where someone wants to take them along on a visit which requires ICRS Membership. If there are any existing members who wish to switch please contact Colin.

Society Magazine TRACKS:

Distribution: **TRACKS** is distributed direct from the printers to members in a clear plastic wrapping with an address carrier sheet (reverse printed with a Renewal / Reminder form if appropriate). If any member fails to receive their copy after one week from the estimated delivery date below then please contact the **Editor**. For current info during the month refer to the **TRACKS** page of our website.

The latest date for articles / info for the **Nov 2017** issue is **Tuesday 31st October 2017**
with delivery to members after **Saturday 11th November 2017**
please check the **TRACKS** page on the website for date of posting from the printers

Magazine Contributors: (* new this month) Thanks to **Chris Addoo, Geoff Arnold, Paul Baker, Alex Barnard, David Berg, Keith Blackman, Mike Brook, Chris W. Brown, Ken Bull, Paul Clifton, Peter Davis, Brian Dericote, Dennis Dey, Bob Eastwood, John Evans, Martin Evans, Alex Ford, Iain Gardiner, Michael Hayman, Roy Hitchin, Nigel Hoskins, James Holloway, Geoff Hope, Harold Hull, Colin James, Alan Jones, Steve Lord, Ian McAlpine, Stuart Moore, Keith Partlow, Colin Pidgeon, Colin Pottle, Paul Rosser, Mike Rumens, Norman Smith, David Spencer, Graham Stockton, Paul Tisserant, Andrew Turnidge, Tony Whitehead, David Williams, Carl Watson & Trevor Roots**. We are sorry if anyone has been missed. Photos not credited are by **Trevor Roots**.

EVENTS

MEMBERS ONLY VISITS

Details TBA for 2018 events in due course. Incls AGM, Crewe Basford Hall, Long Marston & Eastleigh

OPEN DAYS

Three Bridges Depot – Sat 14th Oct 2017

PRESERVATION GALAS (to be attended with our sales stand)

Nene Valley Railway Autumn Diesel Gala - Fri 13th-Sun 15th Oct 2017: This is a celebration of the 60th Anniversary of the Brush Type 2, Class 31s to you and me. See you there.

OTHER EVENTS (to be attended with our sales stand)

Warley National Model Exhibition – Sat 24th-Sun 25th Nov 2017

EASTLEIGH WORKS REPORT

by **Norman Smith** & photos by **Carl Watson**
for the period 1st August - 30th September 2017

August:

Locos: 59003 and 66720 came in from Hoo Jct on the 4th (see below). The 59 for repairs and the 66 re-fuelled and left for Basingstoke for thunderbird duties because of the engineering at London Waterloo.



73961 t&t 73963 were on and off site with a NR test train from the 7th to the 10th.
66773 brought in Translator Set T5 ADB975974/978, from Tonbridge West Yard on the 8th.
66723 in its new GBRf livery left to stable at nearby Eastleigh Station on the 9th (see below). The number ZA723 is fictitious based on a combination of the RAF serial and the loco number





66726 came in for a repaint on the 10th. It left on the night of the 30th in new GBRf livery (see above).

08650 left by road to Whatley with new buckeyes fitted on the 22nd (see left).

66724 came in for a repaint on the 27th.

37608 t&t 37611 were on and off site with a NR test train from the 29th to the 31st.

66720 + 66726 + 66730 took Translator Set T5 ADB975974/978, to Tonbridge West Yard on the night of the 30th.



Units: 455913 brought in 5851 for repairs from Wimbledon Park on the 21st. Repairs completed 5851 returned to Wimbledon the following day and 5913 stayed for traction system upgrade.

Siemens units receiving modifications during August: 444025

CI.455 Units receiving traction system upgrades by Vossloh: 5851/60/71/73, 5913.

OTP: MPV DR98926 + 98976 returned from Bournemouth Depot on the 4th (see above). It has lost its pink livery and is now back in original colours. Then on the 16th it moved to Effingham Jct.

LUL Tampers TMM775 & 776 arrived by road on the 14th for repairs by Matisa.

MPV DR98927 + 70.9319.001-2/002-0 + DR98977 arrived from Effingham Jct on the 14th.

The trailer of fire damaged Tamper DR 75403 arrived by road for Matisa on the 31st.

Wagons: Wagon Trips in/out during August were:

1/8	DBC in	87.4384.015-5/018-9/028-8	
3/8	FL in	92620, 93406/444, 97760	FL out 97730/765
8/8		56303 brought in 70.6790.045-2/075-9 from Willesden ET	
11/8	DBC out	640910	
14/8	DBC in	640903, 80.4736.013-0/021-3	
	DBC out	89005, 87.4375.035-4, 87.4384.015-5/020-5/022-1	
17/8	FL in	92559/626/627/628/637, 93338/379/452	

	FL out	92620, 93296/427/444, 97760	
22/8	DBC in	87.4384.024-7, 87.4909.384-9/389-8	DBC out 87.4384.018-9
24/8	FL in	92611/651, 93336/363/375/447/481, 97728/744/748/762	
	FL out	92627/628, 93452	

Wagons scrapped during the month:
w/e 8/8 980161/184, 982547/583

right 07007 shunting scrap YGBs,
2nd August

Coaches: Coach Trips in/out during August were:

66168 brought in 1651 from Burton Wetmore Sidings on the 8th.

Riviera Trains stock moves for the month, including loco:

5/8	66088	Pathfinder Tours
11/8	66723	GBRf Charter
11/8	66020	DBC Charter
19/8	66121	Torbay Express Ltd
26/8	66773	UK Railtours

"The Towi Tornado".
"The Absent Shunter"
"The Walton Pier Express"
"The Torbay Express"

Peterborough / Bristol (returned by 66147/174)

September:

Locos: 59003 did a test run to Portsmouth and back on the 5th.

37175 t&t DBSO 9702 were on and off site with a NR test train from the 6th to the 7th.

E6016 arrived by road from the Great Central Railway on the 6th. The ED has been purchased by GBRf.

London Transport 12 'Sarah Siddons' arrived by road from West Ruislip for an overhaul on the 7th (see right).

66721 brought in Translator Set T7 64664/64707 from Tonbridge West Yard on the 7th.



66725 arrived for a repaint on the 12th. This is the last GBRf loco in 'barbie' livery to be painted.

66724 in new GBRf livery left for Hoo Jct on the 13th (see left).

66434 brought in 57003 for repairs from Crewe Gresty Bridge on the 13th. Two hours later the 66 left for Willesden Brent with 2 wagons. (see Wagon Trips).

47813 came in with 4 x KFAs from Long Marston on the 14th (see opposite top taken on the

15th showing off its circuit board connections logo). The following day 5 more KFAs together with 47812 + 47815, which had arrived from Bournemouth, were added to the consist. The three locos and 9 wagons then left for Wembley Yard. The wagons were to be used to move Cl.707 EMUs from Dollands Moor to Clapham Jct. (see Wagon Trips).



*left closer view of design, Birmingham Moor St
26th August 2017 (Colin Pottle)*

08790 left by road to Longsight on the 18th.
66758 took Translator Set T7 64664/64707 to
Doncaster Works Wagon Shops on the 22nd.
47812 + 47848 arrived from Bournemouth
Depot on the evening of the 22nd. These locos
have been moving Cl.442 units there from Ely
Papworth Sidings.
66725 was released from the Paintshop in the
new GBRf livery with body & cabside
Sunderland AFC embellishments on 28th (see
below) and departed on the 29th.



above depiction of a Sunderland AFC scarf on 66725



Units: Siemens Units receiving modifications during September: 444027.

OTP: LUL Tamper TMM775 was moved to Eastleigh East Yard on the 5th and from there by road to West Ruislip on the 7th.

MPV DR98913 + 98963 arrived from Effingham Jct on the 25th (see above right).

Wagons: Wagon Trips in/out during September were:

1/9 DBC in 92543/549/552/610/647
DBC out 80.4736.013-0/021-3/049-4, 87.4384.028-8, 87.4909.384-9/389-8
5/9 DBC in 640908, 87.4333.006-2/068-2, 87.4384.017-1
7/9 Raxstar have sold 982446 to a preservation group
12/9 DBC in 92553/554/557/641, 87.4384.016-3/019-7 DBC out 640903
13/9 66434 took 96905/906 to Willesden Brent
14/9 FL out 92559/637
15/9 47812/813/815 took 93323/336/338/379/406/410/462/477/488 to Wembley Yard
20/9 31452 took 70.6790.045-2/075-9 to Wembley Yard
21/9 DBC out 87.4333.068-2, 87.4384.024-7

Wagons scrapped during the month were:

w/e 1/9 980215

Coaches:

Coach Trips in/out during September were:

66055 brought in 6310 & 21245 (nearest in photo right) from Burton Wetmore Sidings on the 19th.

57303 t&t 57306 brought in the Northern Belle stock for maintenance on the 16th and the train left the following day.



Mk1 RBR 1657 (see photo above on the 12th) was finally released on the 26th and will make its first run for Riviera on 30th. This coach has been at the Works since December 2008 and has been owned by DRS, Cargo-D and Riviera whilst on site.

Riviera Trains stock moves for the month, including loco:

2/9	66125	Torbay Express Ltd	"The Torbay Express"
9/9	66185	Torbay Express Ltd	"The Torbay Express" (see EASTLEIGH VISIT REPORT)
16/9	66129	Pathfinder Tours	"The Torbay & Dart Explorer" (returned by 66023)
20/9	66055	UK Railtours	"The Grand Re-Opening" (see loco overleaf top on the 19 th)



RHTT GALLERY

After seemingly not having had a summer we are already into the autumn RHTT season !! Mind you there are plenty of leaves following all the dry weather down south and high winds. The photos below will hopefully be the first of many from around the country...over to you to supply.



Based in Tonbridge West Yard 3 sets were seen formed on the 1st October 2017 for southeast duties with Cl.73s and KFAs. Seen left were 73109 + 99.70.9310.009-4 + 010-2 + 73201 (foreground) & 73964 + 99.70.9310.001-1 + 007-8 + 73962 (top left), the other set present was 73212 + 99.70.9310.008-7 + 003-7 + 73213. Note the rake of new GBRf JNAs (see **FREIGHT MATTERS**). However the first services started the same day with 66721 t&t 66704 on 3W01 then 73128 t&t 73136 on 3W75 and on the 2nd, 66730 t&t 66732 on 3W02.

right 66429 + FEA
642041, 024, 011, 036,
019, 047, 044 & 050
arrives at Stowmarket at
15.53 with 09.55 York
Thrall - Stowmarket
Marsh Lane,
19th September 2017
(Keith Partlow)



TRAFFIC & TRACTION NEWS

August 7

66951 arrived at Walsall from Hope Earles Sidings at 14.06 (David Williams)



August 9

37884 t&t 37611 passed Northampton at 10.38 (Andrew Turnidge)



67003 arrived at Bescot at 13.24 on a light engine trip from Banbury (David Williams)



August 10

73968 on passed Doncaster at 13.33 on a Craigentinny - Brush Traction, Loughborough, Doncaster (Paul Clifton)



August 11

47848 + MMT DR 97501+ 97601 + 97801 passed Gordon Hill at 12.27 with West Ealing - Darlington move (David Berg)



August 12

HST power car 43305 hired in from VTEC brings up the rear of 1V58 09.00 Glasgow Central - Penzance Cross Country service as it leaves its Newton Abbot stop at 18.15 (Chris W Brown)



August 14

68005 t&t 68028 crossed Reedham Swing Bridge at 11.14 on 2J73 Lowestoft - Norwich (Colin Pottle)



37405 t&t 37419 passed Gillets Bridge at 12.44 on 2P20 Norwich - Great Yarmouth (Colin Pottle)



66708 passed Belfield Mill, Rochdale at 13.40 on a new coal flow 6M17 Redcar - FFPS (Harold Hull)



August 15

56094 passed Carmyle Station at 15.23 on 13.31 626E Prestwick BP Oil - Grangemouth Ineos (Iain Gardiner)



August 16

4-6-2 60009 'Union of South Africa' t&t 37706 passed Eastleigh at 11.28 on 1Z67 Dorset Coast Express London Victoria to Weymouth (see photo at end)

August 17

70811 passed Eastleigh at 19.02 on 6O31 Westbury - Eastleigh East yard (see photo at end)

August 18

67028 passed south through Doncaster at 10.34 with a failed 91104 in tow (Tony Whitehead)



43238 was seen at Doncaster at 11.01 on 1N81 09.08 London King's Cross - York (Tony Whitehead)



46233 'Duchess of Sutherland' + support coach 99041 approached Wellingborough at 12.46 on 5Z29 Southall WCR - Butterley (Colin Pottle)



08853 was seen shunting 91101 from Doncaster West Yard into Wabtec at 12.35 (see photo at end)

37025 was seen awaiting the road at 14.04 on 3Q55 14.06 Doncaster West Yard - Derby RTC (see photo at end)

August 19

60021 was seen at Dundee (David Spencer)



August 21

70802 passing Cambuslang 49 mins late at 11.35 heading for on 07.47 696L Oxwellmains Lafarge Colas - View Park Colas Rail. The train runs via the Shotts line and passes View Park Cement and has to turn at Polmadie and make its way back to View Park (Iain Gardiner)



August 22

57601 passed Doncaster at 12.05 on a Carnforth - Norwich ecs working (Andrew Turnidge)



68015 arrived at Bescot from Crewe at 13.39 (David Williams)



August 24

67027 t&t 67023 1Z67 Derby RTC - St. Pancras approach Wellingborough (12.29) (see photo at end)

August 25

90034 + 67012 passed Tamworth LL at 14.18 on a Crewe TMD - Wembley Euro FL Ops. Centre (Peter Davis)



August 26

66709 + 66746 arrived at Ipswich with 04.40 4L02 Hams Hall - Felixstowe North, 66746 had been on this diagram all week and the return 4M02 17.34 Felixstowe North - Hams Hall. The pair ran later in the day as 0E33 to Peterborough via the GEML as the line was closed from March to Peterborough (Keith Partlow)



43378 t&t 43301 sits in platform 1 Glasgow Central on the 06.01 Glasgow - Paignton (Iain Gardiner)



August 27

An unusual shot of Edinburgh taken from the Waverley road bridge showing 91111 in platform 8 & 390104 in platform 9, both examples of the frontline traction on the WCML & the ECML until supplanted by IEPs (Iain Gardiner)



August 28

37884 + 319432 + 319426 5V94 approached Wellingborough at 11.44 on Bedford - Long Marston (Colin Pottle)



37608 t&t 37611 1 approached Wellingborough at 14.01 on Q51 Derby RTC - Eastleigh Arlington approaches Wellingborough (Colin Pottle)



August 29

37608 t&t 37611 passed Eastleigh at 18.36 on 1Q52 Eastleigh Arlington - Eastleigh Arlington (see photo at end)
2-8-0 48151 arrived at Carlisle at 13.04 on The last Fellsman raittour of 2017, 1Z52 08.08 from Lancaster (Tony Whitehead)



August 30

50049 + 50007 + 50044 + 50035 + D1015 on 0Z50 Kidderminster, SVR - OOC111 passed Swindon at 12.00 (Colin Pidgeon)



August 31

37884 + 319443 + 319440 passed Harrowden Jct at 11.44 on 5V94 Bedford - Long Marston (Colin Pottle)



43014 t&t 43062 passed Wellingborough at 13.45 on 1Z52 Derby RTC - St. Pancras (Colin Pottle)



September 1

66107 + 56105 t&t 56096 with Railvac 99.70.9515.002-2 were seen in Doncaster Decoy Yard at 11.07.



66615 passed Toton at 15.13



September 5

47812 + 442416 passes Eastleigh at 13.44 on 5O86 09.06 Ely Papworth Sidings - Bournemouth T&RSMD, Eastleigh (see photo at end)

September 8

37605 with Mk2 6173 waits for the road at Crewe at 12.05 (Martin Evans)



ADB 965581 + 37609 + 37422 + ADB 965580 arrived at Chester at 11.41 on a test run from Gresty Bridge, returning at 13.08 (see photo at end)

37409 + 68024 + 68025 + 68023 in platform 8 Crewe at 12.10 en route from Gresty Bridge – Barrow (Martin Evans)



September 9

57604 passed at Par at 11.27 on the last of 2017's Saturday only services that form the 2P70 10.28 St Erth – Plymouth, going on to form the 2E75 13.35 Plymouth to Exeter St David's). It is nicknamed the 'Vegex' and is formed of Sleeper seating stock (Paul Tisserant)



September 11

43062 t&t 43014 were seen at Edinburgh Waverley at 15.12 (Iain Gardiner)



September 12

60002 6L44 approached Wellingborough at 09.47 on Oxwellmains - West Thurrock (Colin Pottle)



September 13

57313 t&t 57315 passed Stourbridge Jct on the Jorvik Scarborough Spa Explorer (Brian Dericote)



September 14

60021 6L44 approached Wellingborough at 09.54 on Oxwellmains - West Thurrock (Colin Pottle)



September 15

20314 + 20311 t&t 20096 + 20905 were seen at Derby at 12.45 (see photo at end). 20096 was seen carrying a new name (Roy Hitchen)



66739 t&t 66746 arrived at Edinburgh Waverley at 13.18 with the ecs for 13.45 1H85 Royal Scotsman to Spean Bridge (Iain Gardiner)



60103 'Flying Scotsman' passed Isham at 11.09 on 1Z60 Victoria - York railtour (see photo at end)

September 18

37419 + 57007 passed southbound through Northampton at 11.27 (Graham Stockton)



September 21

350235 + 350253 passed South Kenton at 13.33 on 2K28 12.47 Milton Keynes Central - London Euston (see photo at end)

37800 + 387159 + 387161 passed South Kenton at 14.51 on 5X47 13.11 Bletchley TMD - Reading new EMU move (see photo at end)

66619 passed South Kenton at 13.19 on 6H50 13.06 Willesden - Tunstead South Kenton (see photo at end)

67005 + 43320 t&t 43313 departed platform 2 at 18.00 on 1S28 18.00 London Kings Cross - Edinburgh Waverley (see photo at end)

66848 + 66598 passed Camden Road at 11.38 on 6L37 10.00 Hoo Junction - March Whitemoor Camden Rd (see photo at end)

September 26

68011 + 68013 arrived at Bescot from Crewe at 13.33 (David Williams)



59206 & 59202 approached Swindon at 14.45 on 7B12 Merehead - Wotton Bassett. 59202 led after a run round at Swindon to Wotton Bassett (see photo at end)

66522 passed Swindon at 12.05 on 4V31 London Gateway – Bristol (Colin Pidgeon)



September 28

67027 t&t 67023 passed Wellingborough at 12.39 on 1Z52 Derby RTC - St. Pancras (Colin Pottle)



September 29

67030 heading to Kingswear at 12.32 on a charter from Reading was seen from an unusual angle, the paddle steamer 'Kingswear Castle' on the River Dart! (Peter Davis)



October 3

37605 + 90002 + DVT 82112 departed Ipswich at 17.19 on 14.56 Ilford EMUD - Norwich CP running 37 minutes late. The 37 had worked from Norwich to Bounds Green then onto Ilford earlier (Keith Partlow)



October 4

Back on the ECML where they belong, D9002 + 55019 + D9009 passed Grange Park at 13.53 with a York Railway Museum - Eastgate Sidings working en route to the Bluebell Gala (David Berg)



43093, showing the other side to that seen in the OOC111 Report, passed Royal Oak at 11.00 en route from Paddington – OOC (Alex Barnard)



News from Norfolk (Stuart Moore):

Freightliner Traffic to Trowse:

August

1 st	66607	9 th	66512
2 nd	66615	11 th	66420
3 rd	66615	19 th	66606
4 th	66514	31 st	66547

September:

1 st	66544	20 th	66606
7 th	66614	21 st	66606
19 th	66951	22 nd	66606

The outgoing GBRF traffic has been quite erratic with only 66771 being recorded on the 30th Aug and 66756 on 8th Sep.



above 68034 t&t 68001 on the EACH Express 2 on the Ely - Norwich leg of the tour seen in driving rain at Lakenham Bridge

The short set traffic has been reduced back to one set. NC68 ran its final services on the 8th Sep. powered by 68001 t&t 68028. 68001 had replaced 68005 two days before on the short set. The blue grey stock was returned to Burton on the 11th Sep powered by 57002 which carried on to Crewe. However, before the 68s totally stopped passenger services with Greater Anglia the company ran its second charity charter. On Saturday 16th Sep the EACH express 2, a fund raiser for the East Anglian Children's Hospice was powered by 68001 with 68034 which had arrived in Norwich along with 57002 on 13th. The stock was a full GA Mk3 set. The tour ran Norwich – Ely – Norwich – London – Norwich. The 68's departed with 37405 on 18th to Crewe via Willesden.



above 68001 + 68034 + 37405 preparing to form the 09.07 Norwich to Willesden, 18th September 2017

The other short set NC37 has been seen powered by 37405 t&t 37419, 37405 t&t 37716 and most recently 37716 t&t 37425.



above 37716 t&t 37405 into Acle, 28th August 2017 from Gt Yarmouth - Norwich

On the 6th Aug a timing run from London Liverpool St to Norwich and return used CI.360 EMUs 360104/111/116. This was because the 360s are closest to the traction packages of the new units GA have on order. There is also the chance of 360s being used to substitute for CI.90s and Mk3s during the introduction of the new units.



above 360111 trailing the return Norwich - London Liverpool St timing special

Other tours to and from the area have included NENTA tours on the 9th Aug from Norwich to Whitby with 57313 and 47826 and the 23rd Sep from Gt. Yarmouth to Weston Super Mare with 57601 and 57313, the first visit of 57601 in a while.

Finally 4-6-2 60163 'Tornado' ran the Easterling from King's Cross to Gt Yarmouth on Bank Holiday Monday 28th Aug. It was accompanied by 66128. It was amazing to see the huge number of people who had come out just to see the steam loco pass through the local stations.



above 60163 'Tornado' on the Easterling railtour heading back to London King's Cross through Brundall

Structure assessment trains noted during August and September have been:

30 th Aug	37057 t&t DBSO 9702
14 th Sep	950001
14 th Sep	37057 t&t 37254



above 37254 t&t 37057 Cambridge - Cambridge via Gt Yarmouth on the first Norwich - Gt. Yarmouth run through Whitlingham Jct

On the 9th Sep a steam tour from Norwich to Chester was hauled by Gresley A4 4-6-2 60009 'Union of South Africa'. 60009 only returned as far as Peterborough where it was removed to go to the Nene Valley and the tour continued back to Norwich behind 57314.



67027 t&t 67023 Wellingborough (12.29) 24th August 2017 (Colin Pottle)



66150 t&t 4-6-2 60163 Carlisle (15.04) 16th September 2017 (Mike Brook)



4-6-2 60103 'Flying Scotsman', Isham
(11.09) 15th September (Colin Pottle)



above 37800 + 387159 + 387161 on 5X47 13.11 Bletchley TMD – Reading, South Kenton
(14.51) 21st September 2017 (Colin James)



66619 South Kenton (13.19)
21st September 2017 (Colin James)



66176 Carlisle (14.36) 16th September 2017 (Mike Brook)



59206 + 59202 Swindon (14.45) 26th September 2017
(Colin Pidgeon)



67005 + 43320 King's Cross (17.40)
21st September 2017 (Colin James)



ADB 965581 + 37609 + 37422 + ADB 965580
Chester (11.41) 8th September 2017 (Martin Evans)



37608 t&t 37611 Eastleigh (18.36) 29th August 2017 (Chris Addoo)





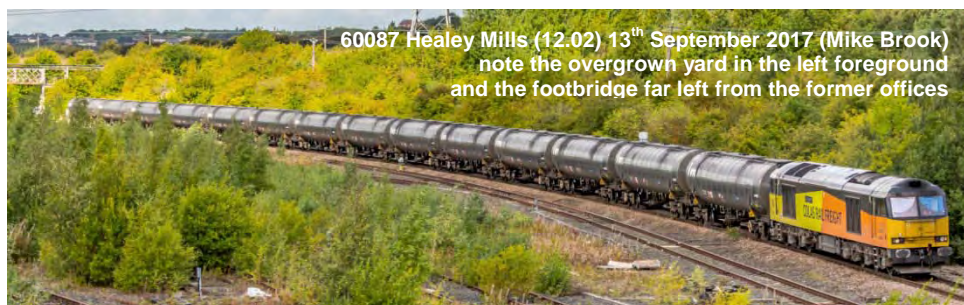
4-6-2 60009 Eastleigh (11.28)
16th August 2017 (Chris Addoo)



08853 + 91001 Doncaster (12.35)
18th September 2017 (Tony Whitehead)



47812 + 442416 Eastleigh (13.44)
5th September 2017 (Chris Addoo)



60087 Healey Mills (12.02) 13th September 2017 (Mike Brook)
note the overgrown yard in the left foreground
and the footbridge far left from the former offices



DEPOT PHOTO SPOT

The following photo by Mike Brook shows a packed Freightliner Leeds Midland Road Depot (26 locos) on the 2nd September with 158843 passing at 16.12. Lined up by the fence are (left to right): 90041/70002/70001/70016 gap 700xx/700x/700xx/66xxx/66587, 66618/66956/66507, track 3 - 66xxx (inside)/66537, track 4 - 66565, between sheds 66616/66564/66603, single shed - 66509/66xxx (inside). Out the back - 66552/66621/66556/66595/70006/70019



EASTLEIGH MEMBERS VISIT

Our annual bash around Eastleigh Works was held on the 9th September 2017, later in the year than the previous 3 years, though it was September for our first such event, our 40th Anniversary. Attended by 83 members (85 paid but 2 failed to turn up) we started our tour after a delay at around 14.15. The weather though forecast to be dire, held fair all morning and was still that way as everyone headed off around the Works. However dark clouds were gathering and the initial sun disappeared to be replaced by torrential rain around 14.30. One fortunate aspect of Eastleigh is that at some point the stock inside needs to be checked out so at least that opportunity was taken by most to take shelter, though there seemed to be more puddles inside than out, hence why the roof is being repaired. However it appears some members got caught having gone straight to the bottom of the yard...bad planning ! The rain abated briefly around 15.00 to finally allow a look outside and grab some refreshments from our new base in the centre of the works alongside the loading ramp. It didn't last long with rain returning, but by 15.30 the sun started to come out in time to see off 66185 'DP WORLD London Gateway' around 15.45 with the Torbay Express comprising the Riviera set of Mk1 coaches: 21269/3123/3066/1671/3098/3097/3119/3147/1813/4949/4949.



above members before the start, our new base with sales stand & refreshments was in the building with two white open doors to the left of 47841 in the centre



above 12, E6016, 73119, MPV DR 98972 & 59003

below 47841, 47771 & 47818





above 07007 & 08879 conducting cab rides
passing either side of KFAs

below 47818 and Neil Dix exiting the cab
after his drive with Carl & Lou Watson,
who was organising the 'Driver for a Fiver'
to the right



MPVs DR 98927, 98974 & 98922

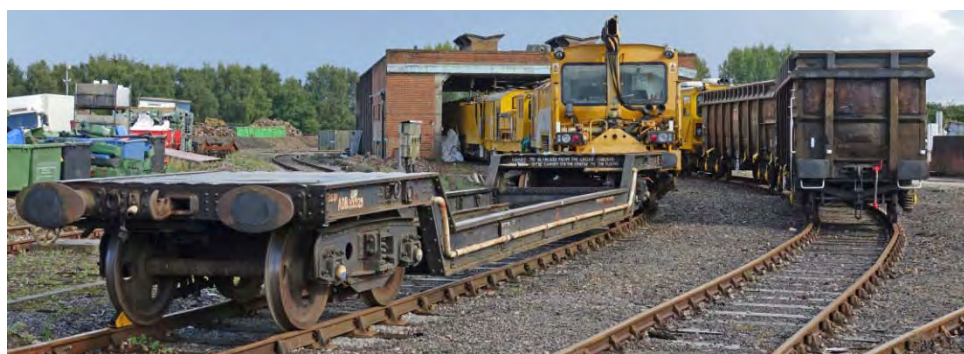




FEA Slinger wagons with 640931 leading, stretching off to the very bottom of the yard



DMUs 51352 (NSE) (left) & 59492 (ScotRail) (right) behind the test sheds



above weltrol 900929, Stoneblower DR 80207 and JRAs 33.70.6790.045-2/075-9

Eastleigh Works Visit Stock List:

Locos: (21)

01508, 323-539-7 'Cheviot', 07007/08567/08790/08799/08887, 47771/47810/47818/47841, 50021 'Rodney' / 57011/57307 'LADY PENELOPE', 59003 'Yeoman Highlander', 66724 (paintshop), E6016, 73119 'Borough of Eastleigh', 73141 'Charlotte', 12 'SARAH SIDDONS', 4-6-2 35005 'Canadian Pacific'

EMUs: (9 + 1 SWT set) (# between sheds adjacent Fareham Line)

61229/230 (7105), 72509/635 (8210), 444025, GLVs# 68501/504/505, Translator SetT7 (ex-CI.508) 64664 'Liwet' + 64707 'Labezerin'

DMUs: (7) (un-numbered - * in paintshop, \$ wrapped in plastic, # outside at back of test sheds)
51346/51356*/51388/51392#/55028\$/59486\$/59492#

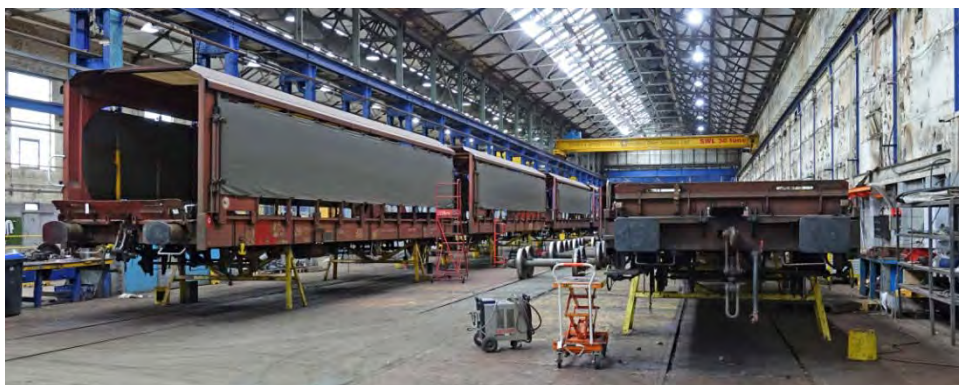
Carriages: (27) (un-numbered- * in paintshop, # with Track Machines)
Mk1s 1651/1657/1671/1813/1832/3066/3068/3097/3098/3110*/3119/3120/3121/3123/3147/3149/
4927/4946/4949/4959/4991/4998/21269/21272/80041#, Mk2 5366
ex-LMS Inspection Saloon 45029

Wagons: (84) (* paintshop, \$ grounded body, # separate chassis)
JGA 17316, TEA 89016*, YGB 980061/0082/2509, MEA 391154\$#/1225\$, MLA 503048/084
KXA 96905/06, KVA 83.70.2795.304-6 (not in **UK Wagons**), IWA 33.80.2693.002-8
KFA 33.70.4574.005-2/006-0/007-8/010-2/012-8/014-4/016-9, KTA 97728/40/44/48/62
FEA 640903/08, Slingers 640931/36-43 (as set 640931/40/39/38/43/42/41/37/36)
KFA 92543/549/552/559/610/611/626/632/637/639/647/651, 93292/294/299/307/336/338/342/348/
350/363/375/379/385/406/407/410/438/447/481/482/483/485, JRA 33.70.6790.045-2/075-9
IPE 43.87.4333.006-2/068-2, IPA 23.87.4375.002-4/011-5/025-5, 23.87.4384.008-0/017-1/024-7
23.87.4392.692-1/714-3

Internal Users: (5)
Weltrol YVQ 900922, YDP 900929, TDA 78238/52, Dogfish TFV 993345* (from MHR)

OTP: Stoneblowers DR 80202/03/07/10/12, Track Assessment 999800 'Richard Spoors' / 999801
TRAMM DR 98305+98306*, MPVs DR 98914+98964 / 98922+98972 / 98924+98974 / 98927+98977
Tammer DR 75403 (part), Underground Tamper TMM775 (99.70.9128.003-9)

Underground: (1) 3103



above IPAs 23.87.4384.017-1 (left) & 43.87.4333.006-2 (right)



above KHA 99.70.9319.004-6 + 003.8 converted for use with MPVs
with 61230 + 61229 and coaches in the background



above
MPV DR 98964 +
98914 back in
corporate NR livery



left
57307 with 73141
behind and 47810

below
61229 + 61230
(7105)





above 4-6-2 35005 below 66185 preparing to depart



It is always a bit pot luck as to what might just be on the Works at the time of a visit but with more locos present than in previous visits and the chance to see 'Sarah Siddons', a highlight for me and a chance to photograph the entire Riviera coaching fleet, I think this year can be deemed a huge success. Driver for a Fiver raised £108.36 with several people adding a few coppers to the pot as donations. Special Olympics South East Hants were well pleased!

Thanks to Chris who did a sterling job almost single handed on our sales / refreshment stand aided at times by Colin. As usual I found I only just had enough time to tour the entire site taking photographs of everything in the 2½ hours available and even then I missed 66724 & 89016 in the paintshop !! Thanks to Carl & Norman for their organisation and roll on next year.



left the one that got away...I missed seeing this on the visit, but whilst picking up more books from our printers (Minuteman at Botley) I quickly popped into Eastleigh and there was shiny TEA 89016, 29th September 2017

Found during the visit early on was a red Memo Book containing some numbers, including OOC111. Please contact the Editor if you wish it to be returned.

NARROW GAUGE PHOTO SPOT



Martin Evans attended the Bala Lake Railway Gala on the 25th August 2017 and the following photos were taken at Llanuwchllyn, the main base.

above Quarry Hunslets 0-4-0STs 'Alice' and 'Maid Marian' wait to depart with the 11 50 to Bala.

right visiting ex-Dinorwic Quarry [855] 'Hugh Napier' 0-4-0ST Hunslet quarry tank (owned by the National Trust) after arriving with a rake of Dinorwic slate wagons.



PRESERVATION NEWS

Barrow Hill Roundhouse Re-Opening (BH):

On the 22nd September 2017 Barrow Hill Roundhouse re-opened to the public with a Gala featuring 47460, 60103 & 60163.



On the 1st October, a week after the opening event, I managed to call in on another epic 5 day round trip to the Eastbourne for a Golden Wedding Anniversary...hence the delay in **TRACKS** but at least it allowed this report and other up to date info to be incorporated.



Access to BH is now from the event car park alongside the road / rail loading facility, the former rough track is now the commercial entrance only. A new pedestrian gate has been provided near the loco unloading gate. A new sympathetic extension has been built on the back of the roundhouse incorporating the former facilities comprising shop / ticket office, kitchen, cafe and toilets. The entrance is now through the new cafe with the former entrance gaining interpretation displays and the shop turned into a representation of a former office. To gain access from the cafe / toilet area to the new display rooms, roundhouse and yard you now need to go through a new ticket office / shop created from a former storeroom. There is now £3 admission price. The former canteen is now only for volunteers and as use as a learning / activity centre with a new timeline story board on the wall where all the ephemera used to be. As with the former entrance I have no idea where all the wagon plates

and signs have gone or if they will be re-erected elsewhere. The following before and after photos compare now with the former facilities on the 27th November 2016.



above the new entrance and cafe showing the serving counter

left the former entrance and access far left to the roundhouse which remains

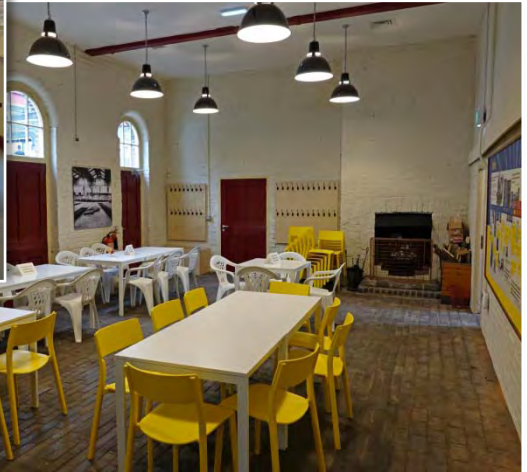
below the new interpretation displays in the former entrance looking the opposite way to the former shop



right
the former shop off the
entrance, note the enlarged
window to the new office as
seen in the opposite
photo bottom

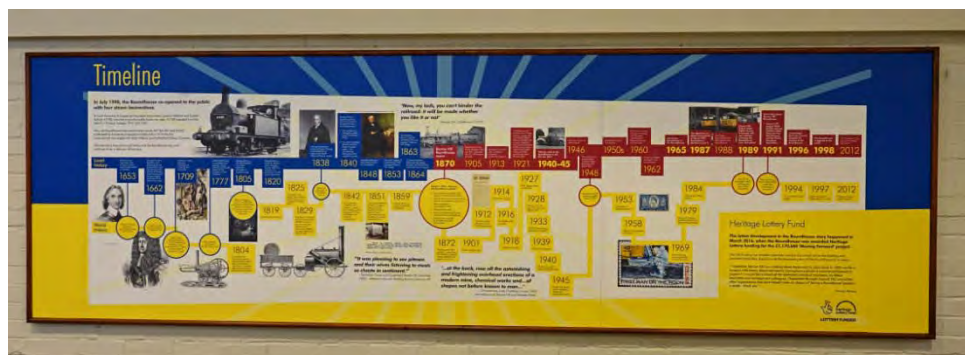


left the newly created office from the former shop
looking from the ticket office with the window
looking out onto the previous parking area



above
the former canteen now a
learning / activity centre
with the white tables set
aside for volunteers

left
the canteen as it used to
look with the timeline
board (see opposite top)
just visible on the right
the photo above replacing
the pin boards



The roundhouse is now almost fully accessible, though nominally one half is a workshop area and D5910 has been moved across to this side. Access was allowed around the turntable though this may alter if the roads become occupied as 7 out of the 24 were empty. The exhibits, mostly steam, all now have interpretation boards.



Once you finally get outside much is still the same though if you go on a Sunday as I did then the DPS shed and surrounding HNRC sheds are roped off, a bit frustrating as the stock often between them cannot be viewed. Currently on site were 3 stored DRS Cl.68s from the TPE pool, very handy as I needed one and the nameplates. In the main yard were a lineup of 5 Cl.37s including those under refurbishment for Colas.



above
with the coaling stage on
the left, locos visible are
55019, 45105 + 27066 +
82008 & 47769

left
behind 47769 are
37207 + 27188 + 37612
+ 37418 + 37607

below
20312 + 68024 + 68025
+ 68023 + 20308 +
20309 + 20304 + 20301



The coaling stage has new fencing, not a bad idea with younger kids, as the old fencing, what there was of it was not much protection from the drop either side. There is also a new interpretation board as seen below.



Further up the main yard could be seen further locos: 03066, 40012 + D213 + 37099. The HNRC sidings were jam packed including 01543, 08428, 08782, 08877, WIGAN1 (08877), 1EMD1 (08824), 20118, 20121, 20132, 2090x, D5814 and 37116 plus several industrial shunters and wagons.

Swanage Railway (SWR):

Services over the northern extension from Norden to Wareham on the Swanage Railway finally began operating during the summer of 2017. Stock drafted in to help was from CI.33s from WCR hauling the 4TC set. In the photo below by Chris Addoo on the 15th August WCR 33025 t&t resident D6512 on 2Z37 Wareham – Swanage is seen at Wareham at 13.15



Mid Norfolk Railway (MNR):

The latest push to reach County School Station and eventually Fakenham, has seen the MNR run a train north of Hoe Level Crossing for the first time on the 1½ mile section Worthing and bridge 1704. Beyond this a new level crossing is required over the B1145 Station Road at North Elmham, where a new platform hopefully will be constructed. The existing station is in private hands. County School Station is a further 1¼ miles north though track needs to be re-laid over this section. When complete, at 17½ miles from Wymondham to County School, this will be one of the longest preserved standard gauge railways in the UK.

Locomotion, Shildon: With the original 0-4-0 '*Sans Pareil*' having moved at the start of 2017 from its usual home in the goods shed at Locomotion Shildon, whilst repairs are carried out, a comparison can now be made directly with the replica housed in the main hall. Note though that the chimney is not fully extended on the replica, 2nd October 2017.

Misc: The new bridge eventually linking the GCR with the GCN across the MML was installed in September 2017.

With its shed finally connected to the track, the first loco worked into Pontcymmer Station on the Gawr Valley Railway on the 20th August 2017. It will still be years before a public service can run the 4 miles to Brynmantyn.



LOCATION SPOT'LIGHT

Three Bridges: Not so much an article but more to say that since the new Depot has been constructed south of Three Bridges station on the London to Brighton line, the southern end of the station is now a good place to not only photograph passing trains but also to view the CI.700 EMUs which are maintained there. The photo below was taken on the 15th July 2017 from platform 4 and shows 700105, 700043 (left) with 700014, 700036 & 700101 (right).



INFRASTRUCTURE NEWS

Misc News:

The last track was laid on Crossrail on the 14th September 2017.

New stabling sidings have been constructed at Maidenhead to house CI.387/1s and Crossrail CI.345s from 2019.

Edinburgh Waverley: Further to the report in the last issue here is a photo of the works involving platforms 5 & 6 taken on the 10th August 2017 by Iain Gardiner.



Didcot Parkway, Car Park:

In order to build a new multi-storey car park on the eastern side of the large surface level car park to the west of Didcot Parkway, access to this part is now blocked off. Parking is only possible in a temporary twin level multi-storey car park which has been built on the western side. It therefore means you can no longer simply drive around to obtain views of the adjoining yard or quickly hop out to view from the footbridge. You can get limited views from the top level of the new car park but it is now a 200 yard walk to the footbridge and in total around 300 yards to the station. The photo below shows 43134 t&t 43035 westwards under new catenary and the temporary walking route to the station via the temporary footbridge hidden behind the tree in the centre.



Hitachi, Newton Aycliffe A new shed has been erected over two of the sidings as can be seen in the process of completion on the 2nd October 2017. It is longer than a 9 car set as 801201 can be seen alongside though as can be seen from the rear of the shed the tracks do not go the full length.



Further to the first article in the June 2017 issue I tried the access from the farm track / public footpath at the western end off the B6444. This is far drier underfoot as the eastern access is a muddy footpath under trees (dripping after rain) then crosses grass which can be boggy after the railway crossing, so much wetter in the winter. There is limited parking in front of the gates (locked) as long as you do not obstruct access. The footpath passes through a gap in the fence to the right of the gates. You can also park on the wide verge as it appears some are now doing. The track is about half way along the B6444. It is also only about 200 yards to the Hitachi facility which is within 20 yards as you turn right off the track, the first thing you see being the new shed.



One thing worth noting is that with trees planted all along the fence perimeter, clear side on shots at track level and even part way up the bank (as above) will become impossible within a couple of years, but hopefully the head on views from the top of the bank (as opposite top) should stay un-interrupted.



See **NEW STOCK** for a view of the shed under construction and closer views of the new CI.385 & 800 EMUs in the photo above.

SIGNAL BOX SURVEY

London Liverpool Street, Metropolitan & Circle Line:

Built in 1875 Liverpool Street signal box sits disused at the western end of the northern London Underground Metropolitan & Circle platform. Designed by McKenzie and Holland it was a non-standard box built of yellow stock brick, with a weather boarded timber framed upper storey. It was listed in 2013 as Grade II and is seen in the photo below on the 13th June 2015.

Originally fitted with a 40 lever frame, a second 20 lever Railway Signal Co mechanical frame was installed in 1902. This was replaced by a 15 lever Westinghouse miniature power lever frame on the 21st February 1954. The signal box was subsequently converted to an interlocking machine room (IMR), and from the 16th November 1956 it was closed and operated remotely from the Farringdon signal box. On the 25th March 2001 control was transferred to Baker Street.



DAYS OUT

Duffs in Passenger Service on the Mainline in 2017!! by Colin Pottle:

On the Thursday before the event, a friend of mine and I were photographing top and tail 67s on a test train through Wellingborough. Casually, he threw into the conversation that Chiltern Railways were laying on Cl.47s using Rail Operations Group locos as a relief service as Euston was closed for HS2 works throughout the coming weekend of the 26-27th August 2017. I remarked that I would be up for going to see that!

Roll on Saturday morning 26th August, and a short drive to Leamington Spa, a lovely old station, and one that I had never visited, although I had passed through it many times before. We arrived at about 09.00, just in time to see 950001 pass with 2Q08 Reading Triangle Sidings - Derby RTC. The idea was that we would get the 47s to Banbury, then a Cl.68 back to Leamington Spa, then the 47s to Birmingham Moor Street, and again, a 68 back to Leamington.



The first working with the 47s was due into platform 3 at just after 10.00 so we bought a return ticket from Leamington Spa to Banbury followed by refreshments and waited on platform 2 so that we could photograph the approaching 47s which were bang on time (see above). Legging it under the subway to platform 3, we caught the first service and alighted at Banbury for some more shots. Whilst at Banbury we got a few more freights plus 57303 t&t 57301 on 1276 Liverpool Lime Street – Bristol Temple Meads Northern Belle.



It was while we were at Banbury we realised that the timetable my friend had was not quite working out! We didn't realise that Chiltern had brought in a special timetable for the weekend, so the 68

haulage didn't materialise. We ended up on a Cl.165 Turbo back to Leamington Spa, only a short jaunt, so not a massive problem.



above 68013 1R33 Marylebone - Birmingham Moor Street at Leamington Spa (14.24)

On arrival at Leamington Spa we then purchased a return to Birmingham Moor Street and awaited the 14.39 arrival of the 47s which was two minutes down when it arrived. Whilst waiting I recorded 68013 (see above). We boarded and made our way to Moor Street arriving on time (see this service right by James Holloway passing Dorridge at 14.53). After a good many photos, the locos and stock were shunted into the siding to await the final service of the day, the 17.34 departure to Marylebone. We didn't have the time to wait for this service, so caught another 165 Turbo back to Leamington Spa.



The stock used was Mk2s 3386 + 6051 + 9526 + 6054 + 6067 (blue / grey) + 5998 (ex-Anglia). If anyone had bet me money that Class 47's would be used on the main line, in passenger service, in 2017, I would have lost. Well done Chiltern Railways and Rail Operations Group for making it happen!

The service on the Saturday was:

Birmingham Moor Street	d 09.34	Marylebone	a 11.40
Marylebone	d 12.53	Birmingham Moor Street	a 15.11
Birmingham Moor Street	d 17.34	Marylebone	a 19.40

UNDERGROUND NEWS

A terrorist attack on the 15th September 2017 resulted in an explosion at 08.20 on an 'S' Stock Underground train lead by 21536 whilst at Parsons Green. Fortunately the device failed to detonate fully resulting in only minor injuries.

Two 3 car Rail Adhesion Trains (RATs) started use on the Piccadilly Line in September 2017, using 173 stock 868 + 668 + 869 and 890 + 690 + 891.

OUT & ABOUT

by James Holloway

*For clarity, steam locos are now shown in red. To be more helpful for those interested in where stock was exactly, can I ask all contributors who list trip sightings over long distances, to please add all locations when submitting to James. Please also ensure your sightings reach James a few days before the press deadline, see **SOCIETY NOTICE BOARD**...ed*

Roy Hitchen:

15th August: Sheffield 11.20-12.05:

37608/611, 66706, 142071/96, 153331, 222012
222016



37608 Sheffield (11.21)

Derby 12.30-14.10/15.10-15.35:

20096/311/314/905, 37425, 43058/089, 47848
66304/706, 153302/08/11/57/74/76/79, 156401
156408/410/414/415, 158783/810/855/864/866
170101/108/111/112/114/115/521/522/638
220001/06, 221102/20/26/32/35/39/41
222001-003/006/010/012/016/021/022

Derby Network Rail Yard:

31105/233, 37603, 67027, 73101/138/139, 97303
DVT's 82111/124/129/145, cs 6260/6264/9525
9701/92114/977969

Brian Derricote:

5th September: Reading 09.30-15.45:

43010/012/016/017/020/023/024/026/027/031/032
43034/036/040-042/053/063/078/086-088/098/122
43125/127-131/134-136/139/140/142/145-150/152
43153/159/162-165/168/169/171/172/174/175/177
43181-182/185/187/189-191/193/194/196-198
59002/205, 66006/020/023/053/067/108/137/420
66532/534/587/588, 165101-112/114/116-122/124
165127/128/130/132/135-137, 166203/07/09/18-21
180103, 450010/012/015/023/036/079/545/563
450564/567/569, 700028, 707008/09, 800003/016
DR73935

Bob Eastwood:

9th August: Nuneaton:

13.04 66423 Carlisle-Cliffe Hill
13.32 70010 Felixstowe-Lawley Street
13.39 66953 to Felixstowe
13.44 90024/28 Mossend-Daventry
13.45 66570 Felixstowe-Lawley Street

13.58 66162 Mountsorrel-Northampton
14.18 70808 Westbury-Bescot
14.41 66532 Felixstowe-Ditton
14.45 90037 Crewe-Wembley
15.05 66771/775 Hams Hall-Felixstowe
15.43 66121 Burton-Felixstowe
15.47 66027 Dowlow-Southampton
15.49 70019 Southampton-Garston
15.51 66086 Peak Forest-Southampton
15.54 66162 Northampton-Mountsorrel
15.55 66756 Felixstowe-Hams Hall
16.23 66569 Southampton-Trafford Park
16.29 66599 Felixstowe-Birch Coppice
16.33 66754 London Gateway-Hams Hall

10th August: Stafford:

13.05 66540 Basford Hall-Felixstowe
13.13 90034/92016 light engines
13.16 90024/28 Mossend-Daventry
13.17 90045/16 Wembley-Crewe
14.17 66522 Southampton-Basford Hall
14.56 66067 Dowlow-Theale
15.05 66086 Trafford Park-London Gateway
15.16 66570 Felixstowe-Ditton
16.01 66502 Ditton-Felixstowe
16.09 66702 Trafford Park-Felixstowe
16.17 66596 light engine
16.24 70010 Wembley-Trafford Park

11th August: Leamington Spa:

66125/419/516/592, 67003

James Holloway:

25th August: Dorridge 11.00-14.30:

37057, 66519/758, 67003, 68010/12/13

26th August: Dorridge 14.30-15.10:

47813+3386+6051+9526+6054+6067+5998+
47812 extra service due to Euston closure, 67013

1st September: Nuneaton 13.57-14.57:

66075/160/510/541, 90018, 92036, 153334
170103/105/113/116/398, 350114/126/368
387157/158 on test, DR77002

2nd September: Hampton in Arden 19.24:

68016/24 Llandrindod-Paddington

8th September: Nuneaton 14.15-14.58:

70015, 153356, 170104/106/112/638, 350101/368
378159/161 on test

18th September: Nuneaton 16.15-16.33:

37405, 66414/569/765, 68001/34, 170105/639
DR80201

Nigel Hoskins:

5th July: Swindon:

10.23 66502 4L31 Bristol-Felixstowe

Didcot Parkway:

11.10 66120 4O39 Morris Cowley-Southampton

Oxford:

12.20 66044 6C58 Banbury-Whatley
 12.22 70809 6M50 Westbury-Bescot
 12.50 66548 4O49 Crewe-Southampton
 13.47 66054 4O21 Trafford Park-Southampton
 13.55 66719 6M40 Westbury-Stud Farm
 13.57 66528 4E18 Fairwater-Doncaster
 14.10 66591/522 4O90 Leeds-Southampton
 14.33 66137 6M48 Southampton-Halewood
 14.55 66516 4M61 Southampton-Trafford Park

Basingstoke:

15.35 66735 Mountfield-Southampton
 16.14 59002 7V12 Woking-Merehead
 16.35 66165 6Z86 Southampton-Wembley
 17.31 66517 4O57 Southampton-Wentloog
 17.50 66846 0Y42 Hoo-Eastleigh
 17.56 66056 6O42 Halewood-Southampton
 18.03 70017 4M99 Southampton-Trafford Park
 18.20 66177 4M66 Southampton-Birch Coppice
 18.56 70015 4M98 Southampton-Garston
 19.25 66120 4V39 Southampton-Morris Cowley
 19.59 66594 4O17 Lawley Street-Southampton
 20.25 66588 4M04 Southampton-Lawley Street
 20.35 35028 1Z28 Bournemouth-Waterloo
 20.44 66511 4O95 Leeds-Southampton
 21.00 37057/116 1Q53 Eastleigh-Woking
 21.05 70808 6Y43 Eastleigh-Hoo
 21.18 66735 4Y81 Southampton-Mountfield
 21.29 66111 4O76 Burton-Southampton

6th July: St Denys:

09.53 66035 6B43 Eastleigh-Southampton
 10.07 66030 4Z69 Southampton-Rotherham

Mount Pleasant Crossing:

10.54 66740 0M46 Eastleigh-Marchwood
 11.04 66137 6M48 Southampton-Halewood
 11.37 66517 4O15 Lawley Street-Southampton
 12.25 66170 4M52 Southampton-Castle Bromwich
 12.28 66177 4O43 Birch Coppice-Southampton
 12.30 66035 6B44 Southampton-Eastleigh
 12.43 66740 6M46 Marchwood-Bicester
 12.49 70015 4O14 Garston-Southampton
 12.59 66034 4V39 Morris Cowley-Southampton
 13.11 70017 4M61 Southampton-Trafford Park
 13.34 66541 4O90 Leeds-Southampton
 14.26 66567 4O49 Crewe-Southampton

Southampton Central:

15.00 66035 6V41 Eastleigh-Southampton

Millbrook:

16.03 66177 4M66 Southampton-Birch Coppice
 16.14 66735 4Y19 Mountfield-Southampton
 16.57 66054 4O21 Trafford Park-Southampton
 17.07 70015 4M99 Southampton-Trafford Park
 17.20 66534 4O35 Daventry-Southampton
 18.34 66511 4O59 Wentloog-Southampton
 18.44 70815 6O31 Westbury-Eastleigh
 19.10 66541 4E76 Southampton-Leeds

Eastleigh:

19.58 66572 4O71 Bristol-Southampton
 20.00 66511 4M04 Southampton-Lawley Street
 20.15 70815 0V31 Eastleigh-Westbury

20.25 66415 4O17 Lawley Street-Southampton
 20.35 66735 4Y81 Southampton-Mountfield
 21.19 66546 4O95 Leeds-Southampton

7th July: Eastleigh:

10.19 66030 4E69 Southampton-Wakefield
 11.24 66511 4O15 Lawley Street-Southampton
 12.08 66177 4O43 Birch Coppice-Southampton
 12.24 66517 4O14 Garston-Southampton
 12.55 66120 4O39 Morris Cowley-Southampton
 13.17 66567 4M61 Southampton-Trafford Park
 13.33 70007+66541 4O90 Leeds-Southampton
 14.12 66589 4O49 Crewe-Southampton

Basingstoke:

15.23 66054 4O21 Trafford Park-Southampton
 15.35 66735 4Y19 Mountfield-Southampton
 15.53 70015 4M67 Southampton-Lawley Street
 16.17 59103 7V12 Woking-Merehead

Mortimer:

66415 4O57 Wentloog-Southampton

Reading West:

17.20 66056 6O42 Halewood-Southampton
 17.55 66177 4M66 Southampton-Birch Coppice
 18.22 66517 4M99 Southampton-Trafford Park
 19.18 66511 4M98 Southampton-Garston
 19.23 66538 4O17 Lawley Street-Southampton
 19.45 66120 4V39 Southampton-Morris Cowley

Basingstoke:

20.39 66541 4M04 Southampton-Lawley Street

Winchester:

20.55 66735 4Y81 Southampton-Tonbridge

8th July: Southampton Central:

10.35 707003/05 1O35 Clapham Jct-Bournemouth

St Denys:

12.05 66415 4O14 Lawley Street-Southampton
 12.33 66511 4O27 Garston-Southampton

Eastleigh:

13.33 66589 4O90 Leeds-Southampton
 14.12 70004 4O29 Crewe-Southampton

Basingstoke:

15.37 66735 4Y19 Mountfield-Southampton

John Evans:**29th July: Manchester Piccadilly:**

66015/510/555/716, 142007/38/46/58/61, 150111
 150113/118/133/134/144/148/207/211/218/224/269
 150270, 156420/449/452/471/488/489, 158758
 158780/783/808/847/852/858, 175002/003/005/007
 175104/109/115, 185104/06/08/09/12/15/16/19/20
 185122/24/25/36/38/39/41/46/47/49, 220019/21
 221110/40, 323221/23-29/35/37/38, 350401/407
 350409, 390009/013/044/046/047/107/124/157
19th August: Crewe Gresty Bridge 10.00-11.00:
 37422/602/605/606/609, 57003/008/304/306
 66426/431/433, 68001/04/15/16/18-22/25/30/31

Harold Hull:**27th July: Calder Valley:**

37608/611 1Q67 Doncaster & return

2nd August: Calder Valley:

66115 6E26 Knowsley-Wilton
 66602 6Z53 Crewe- Hunslet Yard
8th August: Calder Valley:

57315+31466+73001 Bury ELR-Lydney
14th August: Calder Valley:
66708/711/714/746

Alan Jones:

29th July: Carnforth WCR Depot:
37712, 47245/746/787/851, 57006, cs 506/1258
3350/3352/3360/3362/5991/94526

Carnforth:

144015, 153301, 156421/466, 185117/19, 390112
390136

31st July: Settle 15.45-16.15:

43062, 15784/853/910

1st August: Lancaster 11.30-12.00:

70804/806, 156466/475, 185143, 390107/153

Blackpool Tramway:

001/02/04/06-10-12-16/40/260/339/600/625/717
723/733/754/939

2nd August: Skipton 12.45: 66740, 333009/12

Steeton: 333006

Keighley: 75078, 321901

Kirkstall Forge: 66728

Leeds 13.30-14.56:

43059/061/307/318, 60007, 142034/61/89, 144003
144016/17/20/21, 150137/225/277, 153304/15/17
153330/31, 155342/43/46/47, 158753/784/790/816
158842/909, 185102/03/06/09/26/41/43/46-48
221123/33, 322482/83, 333001/03/06/08/10/14-16

Hellifield:

cs 94302/303/306/323/326/333/495/504/527/546

3rd August: Lancaster 11.45-12.30:

66614, 156420/463/471, 350406/409, 390103/128
390156, DR73920/80213

4th August: Carlisle Kingmoor 11.15:

37425, 57007/302, 66301/302/421/423, 88001/02
88006/07/10, with 66703 & 156506 passing

8th August: Fort William TMD 10.15:

45407, 37516, cs 3143/5278/5487/6528/9391
35508/35517/80220/94225. Passing 62005
cs 3093+4951+1840+21266+99329+99326+4960

Fort William 11.30:

156450/493, cs 6708,9800,10531/543/675/699

9th August: Inverness 12.30-14.30:

67020,158701/704/711/739, 170410/415

cs 6705/9804/10666/10703

12th August: Elgin 09.15: 66743

13th August: Elgin Yard 09.15: 60085

20th August: Elgin 06.00: 66424/430

6th September: Inverness 13.45:

08523, 67022, 158701/707/717/722, 170450

cs 6706/9809/10506/10562/10614/10688/10689

12th September: Elgin 08.30: 66555

16th September: Elgin 22.15: 60021, 70804

18th September: Inverness 13.15:

67022, 158733, 170415/432, cs 6700/9526/10523
10531/10607/10675/10680

19th September: Inverkeithing 06.30:

158714, 170393/451/458

Edinburgh Waverley:

68006/07, 92010/14, 158701/706/716/734/735/789
170395/413/477, 220020, 334020/21/31, 380005
380022, trams 256/58/59/62/67/71/74

Haymarket:

156457/494, 158706/718/720/727/732/738/739

158741, 170416/429/454/455/457/470/474

334009/12, 350401

Polmont: 170406

Glasgow Queen Street:

156445, 158726, 170394/402/404/411/420/426

170431/450/452/460

Glasgow Underground:

103/105/108/110-116/118/120/124-126/131/203-06

Partick:

318253/55/60/62/66, 320301/305/306/309-311/315

320416, 334001/07/10/11/15/17/21/23/29-33/38

Glasgow Central 11.00-11.15/12.00-13.00:

156430/432/433/439/456/457/465/507/510/514

158704/714, 221129, 314201-03/06/08/10/11/13

314214, 320305/308/314/315/317/413/415/417

350402/408, 380003/012/013/020/105/107-110

380115/116, 390005/121/128

Glasgow Shields Road:

314207/15, 334034, 380009/010

Paisley Gilmour Street:

314209, 380002/011/019/104

Eastfield: 158726

20th September: Carlisle:

57308, 66095/106, 68017/26, 92032, 153328

156441, 158849/904, 221106, 390005/131/153

Newcastle:

43272/290/306/309, 67010, 142009/21, 156430

156444/454/469, 185105/42, 220001/08/18

Pelaw 09.15-10.35:

142023/70, Metro 4003/05/09/11/13/17/19/20

4023-25/27/29-31/33/35/36/39-41/43-45/48/49

4051-56/58-61/63-69/73/75/77-79/81/82/85/87/89
4090

Barton Mill: 156448

Carlisle Kingmoor 14.30:

37558, 57302, 66302/421, 68004, 88001/04/06-08
cs 9709

Mike Rumens:

9th August: Nuneaton 14.04-14.25:

70808, 153371

10th August: Nuneaton 14.05-14.30:

70813, 90024/28, 170107, 350104

11th August: Nuneaton:

37601, 221106/10, 350107, DR97508/608/808

12th August: Nuneaton 11.20-11.45:

37405/419, 66188, 350125

14th August: Nuneaton:

66305/418, 221116, DR73947

21st August: Nuneaton: 66083, 221104/16

22nd August: Nuneaton:

70813, 153365 DR73806/80208

23rd August: Nuneaton 13.55-14.40:

66019/075/431, 70817, 86605/610, 90019/28
350114

24th August: Nuneaton 14.00-14.25:

66507, 70814, 170107, 350116

Steve Lord:

12th August: Newcastle 15.05: 43013/062

16th August: Leeds 18.05:

43285/303 5S43 NL-EC

18th August: Edinburgh 13.15: 66379/743

26th August: Derby 22.25: 47848, 68016/29

31st August: Burton on Trent [Nemesis] 07.00:

08704 ex works condition

3rd September: Midland Rd Leeds 12.00:

66552/556/595/619/621, 70006/019, 90041

4th September: Craigentinny 17.00:

08596, 66737/743

14th September: Newcastle 13.05: 318258

Mike Brook:

29th July: Warrington Bank Quay 05.30-14.52:

66025/031/059/108/188/510/512/621/715/748

68016/18/27/30, 88007, 90039/43/46, 142004

150201, 156429/468, 175002/003/101/109/110

175113/115, 221101/06/07/09-11/13/15/17

319369, 390001/002/006/016/039/040/049/103/112

390115/121/126/128/130/132/134/136/138/141/148

390151-154/156



68018 + 68030 Warrington Bank Quay (11.55)

5th August: Acton Bridge 05.30-14.36:

66113/154/158/175/506/510/517/544/593/596/597

66715/722, 70010, 88008, 90016/43/45/46/48

158825, 221101/15/17, 319382, 350112/120/242

350244/246/261/370/372, 390001/005/040/042/044

390047/103/112/114/117/121/122/125/130/132/137

390148/153-157



88008 Acton Bridge (09.10)

12th August: Thirsk 06.00-08.25:

43208/251/272, 47749, 60044, 66563/571, 91103

91125/31/32, 180114, 185106/22/31-33/35/38/48
DVT's 82205/15/25/26

Newton Aycliffe 10.05-11.05:

385103, 800017/020-025, 800301

27th August: Bridge Jct Doncaster 07.40-12.20:

43058/089/208/272/274/296/300/307/308/313/317

43318-320/468, 56096/105, 60054/076/087, 66079

66175/304/705/711/741/745/749/762/766, 70017

91103/04/06-10/14/18-22/24/25/27/28/32, 153381

180101/07/09-14, 222011, 800003/013

DVT's 82200/04/05/08/09/11/12/14-18/20/22/23
82225-27/30

Adwick 13.18-14.32:

43300/313/319/320, 66519/555/610, 91108/13/20

142094, 322481/84, DVT's 82203/08/22

2nd September: Midland Rd Leeds 16.09-16.49:

66507/509/537/552/556/564/565/587/595/603/618

621/956, 70001/002/006/016/019, 90041, 142066

150204, 158843

Healey Mills 17.50-18.08:

66606, 142061, 155346, 180101



57313 t&t 57315 (looking northwest from Storrs Hill Rd) Healey Mills (12.16)



66760 passing under A642 Bridge Rd (looking southeast from Storrs Hill Rd) Healey Mills (17.40)

5th September: Whitley Bridge 14.35-20.17:

66144/194/716

6th September: Hensall 10.55-13.00:

66145/199/729/767



66145 passing Hensall signal box (10.56)



66729 trailing a cloud of dust, Hensall (11.20)

13th September:

Healey Mills 12.00-12.45/17.18-17.40:

57313/315, 60087, 66051/733/760, 180112

15th September: Church Fenton 15.15-16.25:

60103 Flying Scotsman, 33207, 47245, 66078/711, DR75302



47245 + 33207 Church Fenton (15.22)

16th September: Carlisle Station 06.00-15.45:

60163 Tornado, 37402/403/423, 43061/206/208/272
43277/295/296/305/306/309-311/313-315/317/319
43367, 57308, 66150/176/430/510/518/737, 67003
68017/26, 70804, 88003, 90044/45, 91113/19/20
142064, 153351/52, 156432/438/451/454/475/490
156492/505/506, 158787/815/901/902, 185104/05
185112/32, 221103-05/15, 350401/405/408-410
390001/040/049/103/104/107/124/126/148/153
390154/156, DVT's 82203/06/31, cs 9704/07



67003 dragging diverted DVT 82206 t&t 91120
Carlisle (07.41)



70804 Carlisle (08.23)

Paul Rosser:

7th August: Woodley 09.36: 66546

8th August: Rugeley TV 07.10: 88008

Nuneaton 07.22: DR73930

Rugby 07.30: 66142, 88005

Milton Keynes 07.41/14.40:

66545, 70003, 350244/251/255/368/374

Wembley Yard 08.08: 66027/115

Willesden Junction 08.11:

66134/531/554, 92028

Blisworth 15.04: DR73923

4th September: Stockport 06.00-06.21:

66623, 185122

Sheffield 07.03-07.10/15.06-15.10:

144004/10, 150204, 158842/843/848/849, 185122

Doncaster 07.35-09.02/14.25-14.42:

08669, 66701/729/732/746/765/766/774, 91102/04

91107/11/19/24-26/30, 142018/89, 150124

158790/795/909, 180105, 185109/22/38, 220004

220014, 322483

York 09.25-09.30/12.35-14.06:

43290/296/309/311/312/465, 66304/424/610

91104/05/09/14/22/26/31, 142016/90, 158756/758

158759/816, 180105, 185106/15/18/21/23/26/36

185140/41/45, 220002/06/23/30/33, 221123/37

Geoff Arnold:

26th August: Chesterfield 08.45-13.09:

43045/076/301/366/378/384, 60007, 153311/30/58

156403, 158774/780/783/785/813/849/851/852

158857-859/863-866/905/906, 220001/03/11/12

221122-25/38, 222001/002/004/005/007-009/012

222014/015/017

2nd September: Chesterfield 08.21-12.00:

43285/303/366/384, 66705, 156404, 158770/774

158785/794/812/813/816/842/845/856/858/859

158863-865, 220004/13/20/27/29, 221128/32/35

222001/003/004/006/007/009/010/014/022/103/104

Michael Hayman:**30th August: Ealing Broadway:**

50007/35/44/49, D1015, 57310, 59203, 66051/717
70016

Paddington: 6023, 47237, 57310/603

Dennis Dey:

10th June: Hassocks: 700009/021

Three Bridges:

387214/225, 700002/005/006/016/018/019/023
700035/037/038/103/107/110

St Pancras 10.30-11.30:

373103/104, 374009-12/15/16/19/20

Gatwick: 700014/015

16th June: Burgess Hill: 700104

Three Bridges:

387202/203/208/213/215/223/225, 700007/023
700026/029/034/035/037/044/046/101/104/108
700110/111/114/115

Crawley Yard: 66136

East Croydon:

60163 *Tornado*, 387210/216/224, 700023/107

Purley: 59202

Gatwick: 387209/217, 700106

Wivelsfield: 700103

23rd June: Hassocks: 700114

Three Bridges:

387201/205/210/211/215/216/220/222/223/227
700001/005/007/026/029/031/035/039/101/103
700105/106/112/114/115

Gatwick: 700107/112

East Croydon: 700109/115

Haywards Heath: 700111

30th June: Hassocks: 700109/111

Three Bridges:

700001/007/016/020/021/026/030/035/037/039
700046/107/110/111/114

Crawley Yard: 59206, 66080

East Croydon:

387201/211/212/216/220/227, 700005/102

Acton Mainline: 387141/147

Paddington: 387136/149

Gatwick: 387203/210/213/217, 700104/112

Wivelsfield: 700102

7th July: Hassocks: 700106/115

Three Bridges:

700002/007/014/016/020/028/037-039/043/101
700102/106/110/112-114

Gatwick: 387204/208/210/211/213, 700105

East Croydon:

387201/221/222/227, 700034/103/109/111

Clapham Junction: 707005/10

London Victoria: 35028 *Clan Line*

Battersea: 67021

Crawley Yard: 66080

Wivelsfield: 700109

14th July: Hassocks: 700106/111

Three Bridges:

700003/007/008/022/034/036/039/041/043
700101-107/110/112/113

Crawley Yard: 66007/023

Gatwick: 387207/211/212/214/216/218

East Croydon: 700041/104

Hornsey: 387108/125, 700042/118/119

21st July: Hassocks: 700112/114

Three Bridges:

700005/013/017/022/023/025/037/043/044/105
700106/112/113/115/116

East Croydon:

387202/203/208/213/216/225/226, 700101/111

Gatwick: 700104/113

Crawley Yard: 66162

Wivelsfield: 700109

29th July: Hassocks: 377611/614, 700007/101

Three Bridges:

377602/603/608/617/623, 387201/202/209-217
387220/224, 700007/010/014/018/022/026/028
700040/043/106-108/111/113/120

Wivelsfield: 700107

4th August: Burgess Hill: 700108

Three Bridges:

387201-203/207/209/212/215/223/224/227
700014/017/025/026/033-035/037/107/109/111
700114/115/120

Crawley Yard: 66027/066

Purley: 66114, 700114

Clapham Junction: 707004/06

Acton Yard:

59103/201/206, 66027/066/069/147/165/169/187
66771

Acton Mainline: 387136/152/155

Ealing Broadway: 66097, 387153/154

West Ealing sidings: 387133/34/38/46/48/49

East Croydon: 700113

Gatwick: 700105/106

Wivelsfield: 700102

Ian McAlpine:

21st July: Peterborough:

66416/742/772/779, 91116, DVT 82206

Newark Northgate: 66766

Doncaster:

56096/105, 66198/588, 67028, 185120/47
DR75302/303

Leeds: 185136

Huddersfield: 150143

Mossley: 150269

Guide Bridge: DR73942

Manchester Piccadilly:

150103/133/145/201, 158773/866, 185144
390118

Deansgate: Trams 3003/067/090

Trafford Park: 66716, 70017

Allerton Depot: 150218

Liverpool South Parkway: 350110

Edge Hill: 66745

Liverpool Lime Street: 390046

22nd July: Capenhurst: 507031

Shrewsbury: 158820/823/828

24th July: Little Sutton: 507006

Hooton: 507017/018

Chester: 142033, 175102, 221116, 508104

Crewe:

46233 *Duchess of Sutherland*, 57308, 150235/257

175001/111, 323229, 350116/236/237, 390001
 390046/049/125/153/154
Stockport: 142052, 150201, 390008
Manchester Piccadilly:
 150277, 185120/21, 323224, 390045
Sandbach: 70011
Manchester Oxford Road: 150110
Deansgate: Trams 3084/092
Cornbrook: 66716, trams 3009/087
Edge Hill: 66750
Liverpool Lime Street: 507005, 508103
Port Sunlight: 507008
Eastham Rake: 508112
25th July: Little Sutton: 508141
Hooton: 507018, 508112
Spital: 508139
Rock Ferry: 507005
Birkenhead Central: 507027
Liverpool Lime Street:
 150133, 319361/367/375/378, 350242, 390114
Edge Hill: 66715
Manchester Victoria:
 150137, 319375, trams 3001/006/015/016/020/029
 3032/035/042/043/046/047/050/051/054/056-058
 3068-070/075/076/082/086/088/089/098/109/118
Salford Central: 150116
Newton-Le-Willows: 175115
Manchester Piccadilly:
 175007, 319369, 323223, 390013/043/104/151
Mauldeth Road: 319450
Manchester Airport:
 185115, 319374, trams 3052/063
Gatley: 66104
Heaton Norris: 150117
Stockport: 390153
Crewe:
 90038, 150242, 350125/234/376, 390020/141
Chester: 158836, 508104
30th July: Liverpool Lime Street:
 185149, 390137
Stalybridge: 150203
Leeds: 91132, DVT 82210
Doncaster: 66726/742
1st August: Whittlesea: 170272
Ely: 66550, 170208/271, 387118
Cambridge: 170201, 387111/116/123
2nd August: Peterborough:
 66139, 91104, DVT 82216, DR77001/79201
Doncaster:
 66701/707, 67010, 97303, 142093, 321448
 cs 9708
Conisborough: 66121
Meadowhall: Tram 106
Sheffield: 66730, 222012/014
Chesterfield: DR73115
Derby:
 08417, 31233, 37423/603, 50008, 56113, 73101
 DVT 82145
Mountsorrel: 66053/426
Leicester: 37510, 47812, 222010
Bedford:
 168217, 222007, 700010/017/037/105/107/114

Wellingborough Depot: 66756
Kettering: DR75405
Loughborough: 168217
Nottingham: 156410, 158788
Beeston: 153355/57, tram 214
4th August: Peterborough:
 66732/739/755/770, 158866, 180112, DR77001
 DR79201
Nottingham: 43013/062, 222019
Mountsorrel: 66089/426/773
Leicester: 56037, 66148/735, 222003
Bedford:
 37403, 222019, 700026/028/029/037/102/104/105
 700109/111/114
Derby:
 08417, 37800, 97301, DVT's 82111/124/129/145
Sheffield: 158845
Meadowhall: Tram 119
Doncaster:
 56096/105, 66109/740, 91127, DVT 82227
Newark Northgate: DR75302
5th August: Whittlesea: 66518, 170270
Ely: DR80216
Stowmarket:
 DR73118/77905, DR98908/959
Ipswich:
 66504/538/562/590/595, 70004, 90007, 321347
 360117, DVT 82136
Norwich:
 37405/419, 57002, 68028, 90005, 156417
 DVT 82107
Norwich Crown Point: 68005
Sheringham: 156418
11th August: Peterborough:
 66724, 68002/27, 70003, 158813, 170270
 DR75402
Ely:
 66113/162, 156409, 170206/271, 387110
 DR80216
Cambridge:
 170205, 317501/515, 379005/13/15, 387105/108
 387128, DR77802
18th August: Peterborough:
 43059/061, 66056/117/531/756/758/778, 700015
Grantham: DR73113
Doncaster:
 08724/853, 37025, 56096/105, 66769, cs 9701
Leeds: 66749, 150225, 185128/34/39
Huddersfield: 150143
Manchester Victoria:
 66510, 150145/226, 319383, tram 3046/096
Liverpool Lime Street: 507020
20th August: Liverpool Lime Street:
 150226, 185113,
Leeds: 91124, DVT 82217
25th August: Peterborough:
 66506/721/778, 70008, 158783, 180114
Ely: 66067
Norwich:
 37405/716, 57002, 68005/28, 90008, 170201
 DVT 82121, cs 9705
Stowmarket: DR77905

Ipswich:

66516/529/541/564/570/591, 90014, 321307/331
321444, 360118, DVT 82114

Trowse: 66125

26th August: Norwich: 156402

Reedham: 37405/716

Norwich: 57002, 90003, DVT 82107

Ipswich:

66510/531/541/566/709/746, 70014/015, 156409
321317/332/359/425

Beccles: 170207

Lowestoft: 156402

1st September: Peterborough:

66731/735, 70019, 170271

Whittlesea: 66742

Ely: 170208/270, 387112, DR73919

Cambridge: 170201, 317884, 379025

8th September: Peterborough:

158858, 700110, DR77001

March: DR79267

Potters Yard, Ely: 442420

Norwich:

37405/425/715, 57002, 68001/28, 156402, cs 9705

Norwich Crown Point: 08480

9th September: Norwich:

37405/425/716, 57002, 68001, 90004/08, 158847

170203, DVT 82132/136

Potters Yard, Ely: 442411/20

Ely: 158866

Ipswich:

66541/570/591/597/952, 70010/016, 86628/637
156419, 321325/329/339/424

Beccles: 156418

Lowestoft: 156407

Stowmarket: 90012, DVT 82133

10th September: Norwich: 158788/789

15th September: Peterborough:

43058/061, 66112/597/719/731/735/765

Doncaster: 66431/516, 67005, 321308/448

Leeds: 66723, 150136, 185107/14/47

Huddersfield: 150271

Manchester Victoria: Tram 3002/047/053

Wavertree Technology Park: 150274

Edge Hill: 66716

Liverpool Lime Street: 350262, 508108

Green Lane: 508117

17th September: Liverpool Lime Street:

185106, 390128

Edge Hill: DR73921

Manchester Piccadilly: 150117

Huddersfield: 150144

Leeds: 90036, DVT 82206

PRESERVATION PHOTO SPOT – STEAM I



having recently returned to steam after a lengthy overhaul, Bulleid MN 4-6-2 35006 'PENINSULAR & ORIENT S.N.CO.' is seen returning to shed at 15.11 after its last run of the day having arrived from Cheltenham at 15.00, Toddington, 10th September 2017

OOC III OPEN DAY

Prior to its obliteration by a Crossrail HS2 interchange station, GWR held an Open Day at Old Oak Common Depot on the 2nd September 2017 entitled 'Legends of the Great Western' to celebrate the Depots history in maintaining GWR traction over 111 years since its opening in 1906. It was a charity event with the benefactors Place2be providing mental health support to schools. As the Society missed out on attending the St Philips Marsh Open Day in 2016 we were determined to get our stand to this unique event. The date was not good though as not only was it Chris's birthday, there was a 90th birthday celebration in Eastbourne we were attending and Bachmann were holding their annual Members day at the MHR, something had to give. A Bachmann ticket was therefore not applied for and fortunately the birthday event was in the evening allowing a re-schedule of our travel to get to OOC first. Sadly another of Chris's birthdays was tied up with railways. All we wanted now was sunshine, as another DRS would not be welcome !!

Though in the heart of London at least OOC was fairly easy to get to from the north and after arriving on the Friday night and staying in the nearby Holiday Inn Express (only £68 but £10 extra to park) we were at OOC bright and early to miss the anticipated queues. The Saturday dawned warm and sunny and our pitch was on the main access road with the new Crossrail Depot behind us (see above with Chris and Colin Pottle)



The display of stock was mostly outside in two sections. The nearest section to the entrance between the access road / wheel lathe and the carriage shed featured heritage traction with 66779, 56049 (recently re-painted and returned to service after 10 years out), 57604 & 57605 alongside the access road, then a line-up of 6 Cl.50s, then 4 steam locos then current traction, all reasonably spaced out.



above left to right D7017, 14901, 31438 & 121034 with resident ex-mail Mk1s 94003 & 94006 in the far left, the Niteq shunter was in the shed on the far right behind 121034, OOC Lane is behind the sheds where the queue formed from right to left then doubled back along the access road on the right swinging round *below left to right* 50007, 50017, 50026, 50044, 50049 & 50050



56049 & 66779 (121034 is to the left of 66779)



above the Cl.50 line-up from the other end with the carriage shed behind,
50050, 50049, 50044, 50026, 50017 & 50007



60163, 6430, 70013 & 1501 (with 57604 far right)



above 37069 (+ 37218 out of view), 47813, 47828 & 43185



above representing the current fleet 43185, 180102 & 800003 with the wheel lathe behind

At the end of the carriage shed a barrier was erected across the tracks to the wheel lathe behind which the line-up below could be seen from a viewing area in front of the High Maintenance Facility (HLF). Rides were undertaken with steam railmotor 93 from the corner of the carriage shed for about ½ mile up the yard. The viewing area also had a Ferris wheel which was very popular for taking an overall view of the site.



above left to right representing traction over time in order, railmotor 93, 6023, 7903, D821, D1015, 50035, 43002, 180102 & 800003

Fortunately we were able to get closer to the previous line-up before the event opened and the barriers went up, enabling the closer views below, only viewable this close afterwards from the railmotor rides.

6023 & 7903

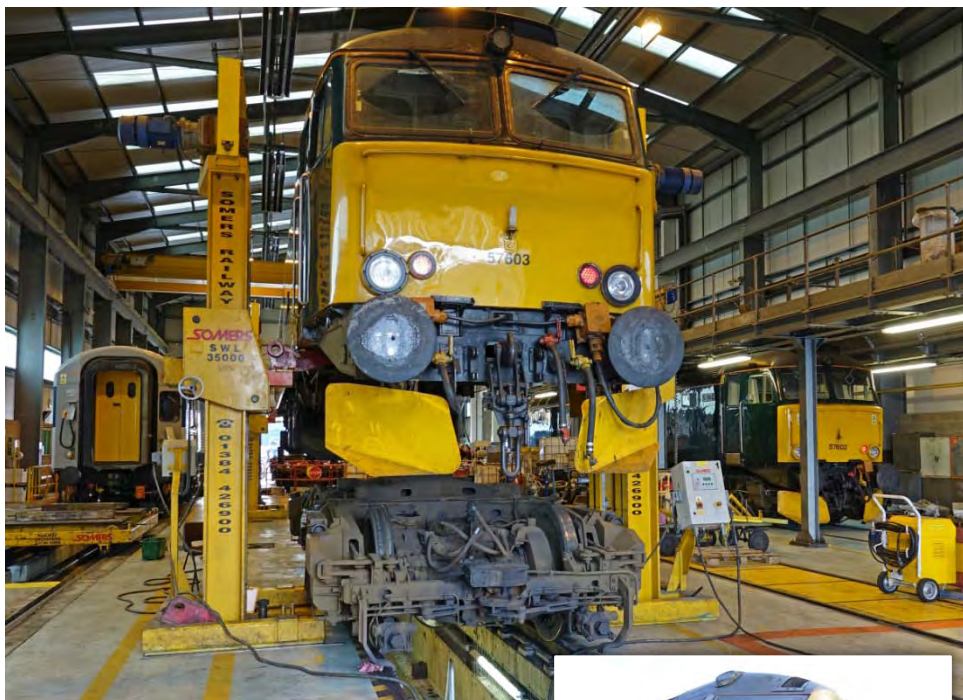


D821 (note no name) & D1015



The HMF had 3 locos, prototype HST 41001, 57602 on the lift and 57603. Access was partly allowed onto an overhead walkway to view 57603 (seen above 57602 in the photo opposite top)





above 41001, 57603 & 57602 in the HMF

A couple of events took place in the morning with firstly Adelante 180104 being rolled through site alongside the access road with two cars only, 50904 (right) & 56904 (below) in a special livery. It was left in a difficult position to get clear overall photo.



That was followed by HST power car 43093 carrying its new name, though already named as we spotted it down the bottom of the site in the morning. It also carried the Open Day branding, 'Legends of the Great Western' with the loco profiles through time repeated on the bodysides.

Old Oak Common
HST Depot 1976-2018



The two depot shunters were also present, BR black liveried 08483 with its slightly different names on either side and GWR green liveried 08836, which spent the day shunting around the working depot.





Both the shunters were seen from the viewing area where a GWR liveried Mk3 sleeper 10532 was also on display and views of the passing railmotor could be had. The only problem was the far end of the area was next to fun fair rides which were incredibly noisy. From this area stabled 332010 & 332012 could be seen and late in the day 43027 t&t 43009 arrived to stable.



The day was huge success with around 8000 attending, no doubt helped by glorious weather though being ticket only I am sure more would have gone on the day. We did a reasonable trade but not as

good as at DRS Carlisle and that was wet ! There were more families as it was not a pure enthusiasts event. However it was worth going and another chance to meet members.

The following is the impressive list of traction, which included all four GWR Cl.57/6s, great for me as I needed 3 of them and no less than 7 Cl.50s (50017 completed my photographic Cl.50 cops). Current locos were from Boden Rail, Colas Rail, DRS, GBRf & Rail Operations Group as well as GWR.

Stock List:

Diesel Locos: (29) 08483 'NEIL Neil Morgan 1964-2014 Team Leader O.O.C. / SCOUSEY Neil....etc, 08836, 14901, 31438, D7017, 37069/218, 41001, D821, 43002 'Sir Kenneth Grange', 43093 'Old Oak Common HST Depot 1976-2018', 43185 'Great Western', 47813/828, D1015 'WESTERN CHAMPION', 50007 'Hercules', 50017 'Royal Oak', 50026 'Indomitable', 50035 'Ark Royal', 50044 'Exeter', 50049 'Defiance', 50050 'Fearless', 56049, 57602 'Restormel Castle', 57603 'Tintagel Castle', 57604 'PENDENNIS CASTLE', 57605 'Totnes Castle', 66779 'EVENING STAR'

Battery Loco: Niteq 5000-E depot shunter

Steam Locos: (7) 0-6-0PT 1501 (SVR), 0-6-0PT 6430 (LLR), 4-6-0 6023 'King Edward II' (DRC), 4-6-0 7903 'Foremarke Hall' (GWR), 4-6-2 60163 'Tornado', 4-6-2 70013 'Oliver Cromwell' (GCR), Railmotor 93 (DRC)

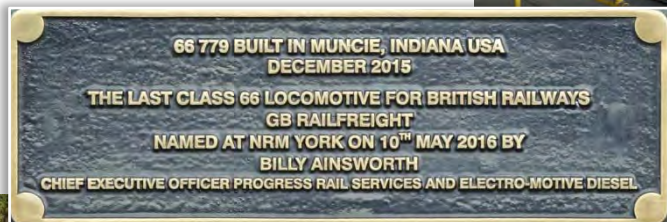
EMUs: (1) 800003 'Queen Elizabeth II / Queen Victoria'

DMUs: (3) 121034, 180102/104

Coaches: (5) Mk1 21249 (support for 60163), 94003/006, Mk2 14064 (support for 70013) Mk3 10532

right Niteq 5000-E
depot battery shunter on its charging point

below
66779 in the glorious pre opening sunshine
with the dedication plaque
not illustrated before



PRESERVATION PHOTO SPOT – STEAM 2

On September 9-10th September 2017 the Cambrian Railways at Oswestry were running steam in connection with a National Heritage weekend so Martin Evans took the opportunity to travel from Oswestry station along the recently extended line to Salop Road Bridge on Saturday the 9th. The loco in steam was [2216] Barclay 0-4-0ST built 1949 as shown returning to Oswestry at 14.50.



FRANCHISE / NETWORK NEWS

Having been the incumbent since privatisation in 1996, SWT ceased to exist on the 20th August 2017 and the new franchise South Western Railway (SWR) came into being. This has heralded a new logo and a new executive grey livery on 444040 (see right by Paul Baker), clearly less eye catching than the existing SWT blue & red but it is obviously attempting to go for something less garish and more stylish and sophisticated. SWT did finally bring Cl.707s into service just before they ceased and the class is now in service with SWR. The franchise runs until 18th August 2024.



The new West Midlands franchise due to start on the 10th December 2017 has been awarded to a joint venture between Abellio, Mitsui and East Japan Railway Co. Rolling stock requirements will see all Cl.170s dispensed with. Three Vivarail Cl.230s are to be used for the Bedford – Bletchley route, the Cl.172s from the Gospel Oak – Barking route are to be transferred in along with the Cl.350/4s once superseded.

ScotRail has received a £10 million loan from sister company Abellio Transport Holdings BV due to losses in 2016, the first for the franchise in more than a decade.

Beacon Rail has taken ownership of all Cl.220/221 Voyagers.

Siemens and Alstom have reached an agreement to merge. It will need to be ratified but could happen by the end of 2018.

LSL based at Crewe Diesel Depot became a TOC on the 4th August 2017 allowing it to run charters.

TPE is to introduce 66 Mk5a coaches built by CAF in Spain. These will consist of 39 x TS 11701-739, 13 x F 11501-513 and 14 DVTs 11801-814. They will operate in rakes of 5 with Cl.68s, 68019-32.

LIGHT RAIL & METRO NEWS

Metrolink by Geoff Hope:

The 27th July was not a good day for 3098 as it was involved in an accident at Droylsden on the Ashton line with a recovery vehicle finishing up in a front garden clearing a garden wall and damaging a car. I believe this is the first occasion a recovery vehicle has been involved in a road accident with a tram. Over the next twelve months all Metrolink employees including drivers will be equipped with bodycams in the fight against physical attacks, verbal abuse and vandalism on the network. Keolis Amey as part of their commitment towards safety have cut agency staff from the security team and recruited 24 security workers who will report direct to them. It was announced on the 1st August that for the first time a single smart card can be used for all tram and bus journeys in the Greater Manchester area. On the evening of the 4th August a customer using a ticket machine at St Peters Square discovered the machine being used did not give any change as the slot had been taped up. It was also found the other three machines at the stop had been tampered with by the culprits who were hoping to pocket the change. During mid August work commenced on the first phase at the Crumpsall stop including a new turn round facility with a wider platform for Bury - Manchester bound trams to be completed mid 2018. The final phase of the work is to be completed and ready for use in 2020 in readiness for the Trafford Park line opening though it hasn't been announced if the Trafford Park service will use the First City Crossing (FCC) Mosley St / Market St or the SCC Princess St / Cross St. Towards the end of August Hollinwood tram stop on the Oldham/Rochdale line became a battle ground for two local rival groups with police and the Travel Safe personnel called to the incidents on more than one occasion.

The weekend of 25th-28th August was the annual Manchester Pride Parade and all Pride pledge band wearers could travel free of charge between City Zone stops. Trams 3016, 3082 & 3084 were carrying a livery celebrating the weekend, 3016 has since lost its livery. Tram 3063 has lost its Aperol Spritz advertisement along with 3095 losing its Key 103 advertisement. Trams 3037, 3058, 3076, 3081, 3085, 3105 & 3115 are now advertising the Get Me There travel cards (see 3076 below at Deansgate Castlefield on the 5th September 2017).



On the 5th September it was noted trams 3017, 3051 & 3068 were all indicating Driver Training. Is this the first signs Metrolink will be increasing frequencies or extending services? Only time will tell.

In the early hours of the 15th September a member of the public was threatened by two teenagers with bolt croppers and knife when he attempted to stop them from trying to break bike locks at Brownley Road tram stop on the Airport line. An unattended bag which was found to contain just one mobile phone, was left on a tram at Altrincham Interchange delaying services slightly on the 18th September. Reported in the Jul / Aug Tracks the female charged with pushing a male into the path of a tram at Victoria has pleaded guilty to manslaughter.

It was noted on the 20th September that T68 1007 was stabled in the outside sidings at Old Trafford Depot. This tram was withdrawn in February 2014 and had been kept inside the depot for safety/security reasons having been preserved for the Heaton Park Tramway. A move therefore in the near future seems likely.

Observations for Wednesday 20* September (96 trams in service)

Cornbrook 09.00-11.20:

Altrincham - Ethiad Campus: 3004+3022, 3005+3021, 3008+3049, 3009+3059, 3017+3060, 3018+3024, 3020+3044, 3038+3041

Altrincham - Bury: 3001/3003/3016/3026/3027/3035/3039/3052/3055/3058

East Didsbury - Shaw: 3013/3050, 3064+3096, 3068+3100, 3073, 3074+3075, 3090/3099, 3101+3103, 3104/3108/3114

East Didsbury - Rochdale: 3031/3032/3063/3066/3067/3071/3080/3088/102/107/113/115/119/120
Eccles - Ashton: 3069/3078/3081/3085/3087/3093/3094/109/111/112/116/117 Media City-Piccadilly:
3036/3053/3061/3086/3106

Airport - Deansgate Castlefield: 3033/3076/3077/3079/3089/3091/3092/3095/3110

Old Trafford Depot 11.25-11.50:

1007/1020/1023/2001: 3011/3037/3054/3056/3083/3084

Queen's Road Depot 12.10-12.30: 3057/3072/3098/3105/3118+2 unidentified Victoria 12.35-13.35

Bury - Piccadilly: 3006+3046, 3007+3030, 3010+3051, 3012+3048, 3014+3028, 3023+3047, 3029+3040

Trams not seen: 3002/3015/3019/3025/3034/3042/3043/3045/3062/3065/3070/3082/3097

Midland Metro: Tram 26 departed for repairs at Wolverton Works after receiving damage when it was derailed in the depot in June. The first part left on the 20th September followed by the second part on the 21st September.

Tram 18 arrived back from Spain on 22/9/2017 fitted with lithium batteries to allow catenary free running in areas with sensitive architecture.

Sheffield: The first public service of a tram-train took place on the 14th September 2017 when 399202 ran a VIP service following its naming as *'Theo In Support of The Children's Hospital Charity'*. This was followed by a public service for charity where donations were requested rather than tickets issued. Normal public service is expected to start in January 2018.

Trams 107 & 123 suffered minor damage after colliding at Halfway on the 8th June 2017.

Nottingham Express Transit: Tram 229 suffered damage in a collision with a lorry.

Re-named ever year in honour of the Nottingham Nurse of the Year, tram 220 has been named *'Christina O'Loughlin'*

PRESERVATION PHOTO SPOT - DMU



DMU 55012 Stanhope, WEA, 31st August 2017

FREIGHT MATTERS

To allow members to keep their copy **UK Wagons** as up to date as possible, changes are provided via this spot every month. Please let Trevor Roots know if you have any amendments or wish pass on any other helpful wagon information, contact details on page 2.

Thanks to the following for information: Alex Ford, Bob Anderson, Steve Gillam

Amendments: It appears many bogie tank wagons have either long been scrapped or not seen in many years though still on TOPS, so the following should no longer be in the book:

p97 **ICB** 33.80.7794.000-9 to 004-1, **ICA** 33.80.7794.015-7 to 036-3, 33.87.77970.002-5 to 039-7

p98 **ICB** 33.80.7892.000-0 to 013-3, 33.80.7894.010-7 to 057-8, **ICA** 33.87.7898.000-7 to 002-3/005-6 007-2/011-4/012-2/015-5/016-3/018-9/020-5/021-3/023-9/025-4 to 029-6/031-2/033-8 to 036-1/038-7 to 116-1

Out of Store: 12449/52/57, 12906, 19236, 112075/2120/2163/2221, 210603, 310473/1124, 369009 396051, 501049/251/252, 608360/517, 610114/115, 81.70.4908.020-0/044-0/055-6/086-1/106-7/124-0/138-0, 37.80.4909.078-0, 33.68.4909.515-1/958-3

To Store: (Long Marston for purging then scrapping) 56001-015/021-037/039-052/055-059/062-089/091-133/136-160/164-166/169-179/185-198, 56208/09/30/31/35/36/38/42/47/51/54/56/58/61/62/72/77

New: IIA Bogie Hopper 81.70.0659.001-9 to 041-5 for GBRf sand flow from Middleton Towers (en route at Fréthun, France)

MMA Bogie Box 81.70.5500.454-0 to 478-9 for GBRf (see photo below) (Tonbridge West Yard), 479 to 499 to be delivered



Re-classified/Re-numbered: MHA to MPA

394046/056/130/175/179/215/222/229/266/268/289/309/320/348/371/384/392/531/560/639/675/692/696/707/713/765/780/789/809/822/900/907/929/948, 396003/010/025/091/110/130/147

Converted: MXA Bogie Open Box prototype 950321 is now 82.70.4703.217-8

Preserved: WEN 980085

Reinstated on TOPS: 110466, 361069

Removed from TOPS / For Scrap / Scrapped:

88101, 89006 reported in the last issue should be prefixed DR in case you delete the wrong wagon.

3754/58/71/73/78/88/89/91/92/94, 16008-309 (all this series now deleted), 92546/578/602/635 110037, 112011, 200366, 310432/506/588/612/702, 391021/023/044/103/313/324/590/648/658/662/684, 394154/763/912, 395010/031/034/068/070/071/085/089/099/111/112/125/128/129/157/158/174/200/206/207/208/214/216/217/230/235/236/255/286/287/302/309/310/313/326/335/339/342/344/347/368/388/402/404/405, 400047/051/060/076/078/081/097/098/114/169/210/211/262, 470041/095/134/155/175, 550009/12/13/15/22, 900014/018/019/023/029/031/042/043/051/0456/057/058/067/073/076/078/090/122/130/157/164/167/168/177/185/194/195/216/226/228/235/239/250/251/261/268/

276/277/284/287/289/297/298/299, 910001/14/022/026/027/036/038/043/048/053/054/057/063/069/
 073/080/084/085/095/099/107/166/175/184/221/211/216/223/229/237/241/243/244/248/254/258/264/
 269/271/275/278/285/292/296/299/307/311/316/328/332/346/359/364/368/379/381/390/393/403/
 408/413/416/417/420/423/425/431/433/435/436/438/450/454/460/462/464/466/467/471/480/500/509/
 513/517/528/560, 950021/025/106/115/348/360/631/685/829/833/911/919/954, 965010/015/0029/054/
 56/059/076, 967602, 979011/051/061/116/504/505/511/513/604/611/612/613, 980116, 996850
 81.70.4969.005-5/007-3/015-4/019-8

OTP News:

One half of Tamper DR 75403 has suffered fire damage. The good half is at Eastleigh Works.

New: MFS33ZW Materials Wagon with Crawler Tracks 99.85.9552.055-7/056-5 for Amey, they have retractable crawler tracks to work off rail

Out of Store: ADRC 96715

Removed from TOPS / For Scrap / Scrapped: DR 92201-205/207-212

FREIGHT NEWS

MHA 394829 was noted in the consist of 6M50 Westbury – Bescot at Nuneaton on the 3rd October 2017 by Mike Rumens in DBC red and appears to have been refurbished.

HTA Hoppers 310382/0405/0579/0709/0755 are the next to be converted to shorties.

Test runs have been conducted during September 2017 with pairs of Drift / Beilhack snowploughs:

8 th	ADB 965581 + 37609 + 37422 + ADB 965580	Crewe Gresty Bridge – Chester return
20 th	ADB 965209 + 37605 + 37606 + ADB 965231	Taunton Fairwater Yard return via Exeter Riverside Yd
20 th	ADB 965211 + 57002 + 57007 + ADB 965237	March return
27 th	ADB 965210 + 57002 + 57007 + ADB 965236	Tonbridge West Yd – Ashford return

GBRf has won a contract to move flyash from Cottam PS for J Chubb Ltd to HH Celcon brick works at Borough Green near Sevenoaks. Though it has only officially signed the deal, trains have been running on this 12 month contract since the 4th July 2017.

DBC have picked up a contract to run spoil from Kellingley Colliery to Killingholme, Immingham. It is a twice daily flow with locos top & tailing as there is no run round facility.

GBRf has taken the 3 year contract to manage the preparation and all movements at DP World London Gateway and started operating from the port on the 17th March 2017.

GBRf have won a contract to move household waste from Collyhurst near, Manchester Victoria to Roxby Gullet, Scunthorpe for Biffa.

VTG has acquired CIT Rail Holdings (Europe) SAS (formerly NACCO).

OTP PHOTO SPOT

ADB 968501 one of the two snowblowers owned by Network Rail and based in Scotland, Rutherglen PW Yard, 15th September 2017 (Iain Gardiner)



recently preserved
YGB Seacows

right
982896
Locomotion Shildon,
2nd October 2017

below
980085 stock sidings,
Leeming Bar, WEN,
2nd October 2017



PRESERVATION PHOTO SPOT - WAGONS & EMU

below the latest progress on 2HAP 61275 (4308) can be seen in the workshop area of Locomotion Shildon on the 2nd October 2017, showing the inner end as a comparison to that shown of the cab end in the March 2017 issue



STOCK CHANGES

*It is hoped that all major changes recorded below will help you keep the **UK Combine, Pocket Book and Name Directory** up to date, (numerous pool code changes will not be recorded). In order to compile as accurate and up to date list as possible, can members please pass on their observations, particularly name changes and multiple unit reformations to the editor, **Trevor Roots**. Where possible, photos of new nameplates will be included as and when a suitable photo is sourced from members.*

Amendments to Books: (C Summer Combine)

SC p162 remove duplicate 1962 (on p195)
 SC p192 move 975397 (ODT) to p206 GCR
 SC p196 3132 EOR to GWR & name MARY
 SC p196 add Mk 2c 3227 NVR
 SC p199 4914 not A
 SC p199 add Mk1 5008 [99002] GCR
 SC p203 17099 change current no. to 14099
 SC p207 80435 static M at Winchcombe Station
 SC p208 92350 change current no. to 81049
 SC p208 92384 change current no. to 80893
 static at Winchcombe Station
 SC p208 92929 FXR to GCR

Misc. News:

43021/132 + 40207/42046/42047/44015 the first HST power cars & Mk3 coaches have transferred away from GWR to Scotland and started trials from Aberdeen on the 4th September 2017. The remaining 4 coaches 41032/42045/42207/42561 from set LA02 have gone to Wabtec, Doncaster for modification
 56106 has donated a cab to accident damaged 56115 in Hungary.
 68023-25 have been temporarily stored at BH.
 68019-27 in the TPE pool with 68021/19 the first to receive TPE livery without yellow ends.
 66017/18/20/34/124/130/192/230 now in DB red. ATW is to lease 5 Cl.769 conversions.
 142072 ran on the 24th September 2017, the first time since catching fire a year ago.
 Cl.166s have started operating from Bristol TM to Severn Beach.
 Cl.319 EMUs ceased operating with Thameslink on the 27th September 2017.
 The Bedford to Brighton route is now solely in the hands of Cl.700s as the remaining Cl.377/5s have transferred to SET.
 The first of the new CAF built CS Mk5 coaches have moved to the Velim test track in the Czech Republic, 15001/002/101/301/302.
 The repaired driving car from 350233 has returned to Northampton from Brodie Engineering.
 385002/101 have moved to north Germany from the Velim test track for 100mph testing.
 373101 (blue)/102 (pink) have been re-liveried and donated to the National College for High Speed Rail facilities at Carolina Way, Doncaster and Venture Way, Dartmouth Middleway,

Birmingham respectively. The insides are to be gutted to create classrooms.

The first Cl.800 IEP into Scotland from Newcastle – Dunbar took place on the 16th August 2017.

315840/848 were damaged in a shunting accident at Gidea Park on the 25th July 2017 and will be withdrawn.

318268 was the last of the class in ex-SPT carmine & cream livery leaving only a few Cl.314s left in this livery.

DRS has sold its seven Mk3s stored at BH.

New:

EMUs:

345012/14/16/17/19/20	374029/30
385014/103/104	387157-65
707011/12	800301-03 802002

Having got a bit lost with recording the Cl.700 & 800/0, the following is a list of all those I believe are in the UK: 700001-046, 700101-125/128/132/134/136, 800001-30

Transferred: (* on loan)

(# into preservation, \$ no longer preserved)

Locos:

11215# DVR	03020 SON	03197 MHR
08530 SZ	08575 (BO)	08623 HOP
08706 WI	08804 EKR	08891 (BO)
09009 DLM	D7629* ELR	D7659 PEA
31466 DFR	33018 SON	33202 MHR
37214 BKR	37409 KM	D821 SVR
45060 GCN	47811/13 CD	56060 (LR)
68023-25 (BH)	73001 DFR	73133 ZG
E6016\$ ZG (sold to GBRf)		86901 BA
57007/302 KM to MDL		

Steam:

2500 BH to NRM	4277* DSR to CVR
45231 ELR to CD	3020 NRS to BRC
	61994 NYM to BKR

DMUs:

	59506 PEA
--	-----------

EMUs:

Cl.423 70950 SBK
319002/006/009/011/217/220/426/432/435/440/443/444/446/459 (LM)
319384 AN 319007/431 ZN 319424 LB
442406/19 (SL) 442402/08 (ZG)
442410/13 (BI)
442403/04/09/11/14-18/20/22/23 (BM)

Coaches:

5220 TSR
35341 [80208, 977908] MNR
110006# BO 11011#/12047#/12063# MNR
12065#/12087#/12134# GCN (for Cl.41)

40402/44089 ZR 975875/977087 LR
DVT 82106 (LM)

Steam Status:

4566 A to S 61994 A to S

Names: (+ re-applied)

20096 *Ian Goddard 1938-2016*
43082 *RAILWAY Children – Fighting
for street children (amended)*
43093 *Old Oak Common HST Depot
1976-2018*

375619* *Driver John Neve*
357007* *Sir Andrew Foster*
390010 *Cumbrian Spirit (amended)*
450127 *DAVE GUNSON*
2-10-0 92214 *LEICESTER CITY*
2-10-0 90775 *THE ROYAL NORFOLK
REGIMENT*

Mk 2f 1211 *CAR No.1211*
Mk 2f 3360 *CAR No.3360*
Mk 2f 3362 *CAR No.3362*
Mk 2f 3348 *INGLEBOROUGH*
Mk 2f 3384 *PEN-Y-GHENT*

Recent but not previously illustrated:



390148 as reported in Jul / Aug 2017



222017 as reported in Jul / Aug 2017
(Geoff Arnold)



4-6-2 92214

Queen Elizabeth II

above & below 800003
as reported in Jul / Aug 2017

Queen Victoria

Not previously known:



coach Mk1 3132

Names Removed:

08721 *Longsight TMD*
43021 *David Austin – Cartoonist*
43132 *We Save the Children – Will You*
31459 *CEREBUS*
156444 *Councillor Bill Cameron*
156482 *Elizabeth Gaskell*
325002 *Royal Mail North Wales &
North West*
325006 *John Grierson*
2-10-0 92214 *CENTRAL STAR*
Mk2 5381 *ELIZABETH-ANNE*
Mk2 14059 *GLADYS*

For Scrap:

EMR Kingsbury 373231/232
Sims, Avonmouth Cl.411/412 70508

Scrapped:

CQ DBSO 9711

New Codes:

Depot / Location:

DLM Dean Lane, Manchester
NCB National College for High Speed Rail,
Birmingham
NCD National College for High Speed Rail,
Doncaster
SON Sonic Rail Services, Burnham-on-Crouch



left
stored
68024 + 68025
+ 68023,
BH,
1st October 2017

TRANSFERRED STOCK

right 08782 BH,
1st October 2017



left
moved from
Longtown
37612 & 37607
in de-branded
DRS blue
bookend 37418
moved from ELR,
BH,
1st October 2017

below
08742 moved
from BH to DRC,
29th September 2017



right 52029 (ex-Strathclyde PTE
livery) + 51372 (BR blue)
Toddington, GWR
10th September 2017

52029 moved in September 2015
from Llanelli & Mynydd Mawr
Railway and 51372 in July 2017
from Titley Jct



below with its boiler ticket expired
K4 'The Great Marquess' 2-6-0
61994 moved from outside storage
at Grosmont, NYM to Bo'ness, BKR
where it is to stay for the next 2
years on static display under cover
in the SRPS Museum, 24th
September 2017 (Iain Gardiner)



above 37214 has moved from West Coast Railways, Carnforth to Bo'ness, BKR for component
recovery and eventual scrapping, 28th September 2017

CONVERTED STOCK



Southern 171402 converted from
ScotRail 170423 & 170424,
Erridge, 3rd September 2017



19001 ex-DVT 82213
repainted in blue Bo'ness, BKR
right 31st August 2017
below 28th September 2017



NEW STOCK



800302 (821002) Doncaster Carr
IEP Depot, 4th September 2017



above 387159 below 387161 behind 37800 on 5X47 13.11 Bletchley TMD - Reading Traincare Depot
new EMU stock move, South Kenton (14.51) 21st September 2017 (Colin James)



left 700013
West Hampstead
(14.07)
2nd September
2017
(Colin James)



800013 (green) + 800008 (white) on 5X81 Paddington - Stoke Gifford, Swindon (13.30) 26th September 2017 (Colin Pidgeon)



800005 with 'DESIGNED IN JAPAN BUILT IN BRITAIN' branding & birds on one end only, Chippenham (17.01) 24th August 2017 (Keith Blackman)



left 68034 (+ 68001 + 37405) on 0Z34 09.02 Norwich - Willesden Brent, Ipswich, (10.16) 18th September 2017 (Keith Partlow)

The 68's worked a raitour off Norwich on the 16th after the short set finished on the 15th September



707009 + 707008 passing Eastleigh on 5Q81 Clapham Jct - Brockenhurst (10.00) 10th September 2017 (Chris Addoo)

With production of CI.800s and now CI.385s in full swing, the Hitachi facility at Newton Aycliffe is bursting with new units as can be seen below. What is handy is that a ticket with the unit number is now stuck on the drawgear of CI.800s where none has yet been applied on the bodysides. For an overview of all the units in the yards and more views of the new shed, see **INFRASTRUCTURE NEWS**.



*above 800022 (+ 800024) & 800029 (+ 800030)
below 800030 + 800029 & 800024 + 800022, Hitachi, Newton Aycliffe, 2nd October 2017*

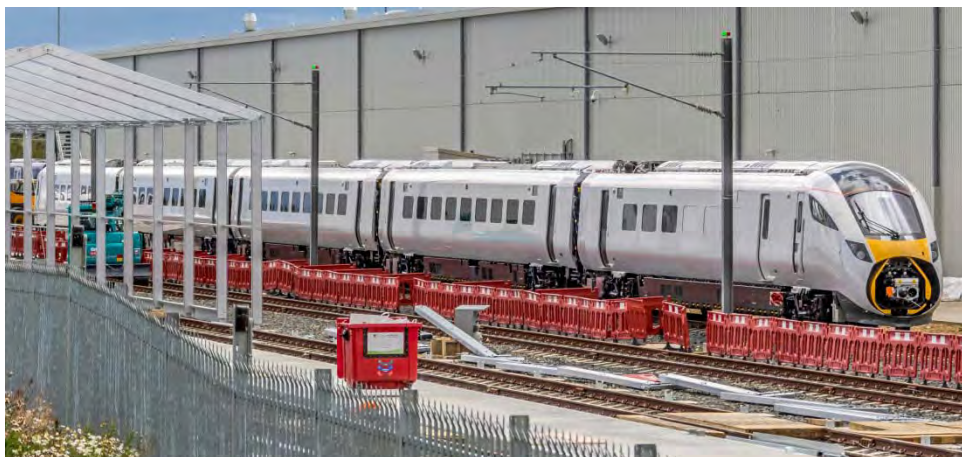




above 385104, below 800025 with 385103 behind, Hitachi, Newton Aycliffe, 2nd October 2017



385014, 800028 & 800027
in front of the new shed,
Hitachi, Newton Aycliffe,
2nd October 2017



*above 800017 alongside the partly erected new shed, Hitachi, Newton Aycliffe
(10.53) 12th August 2017 (Mike Brook)*



*above 800014 (811014) Hitachi, Doncaster Carr, 2nd October 2017
below 801201 (821201) Hitachi, Newton Aycliffe, 2nd October 2017*



LIVERIES

*This section will endeavour to show all new liveries / variations or those existing ones where not carried on the stock before. Liveries that become 'extinct' will also be covered. As with names, it may take a while after the livery application before a photo is sourced from members. New liveries may also be shown in other articles: 66723, 66724, 66726 & Mk1 1657 in **EASTLEIGH WORKS REPORT** and 43093, 56049 & 180104 in **OOC111 REPORT**.*

right

1705 in new
BR blue livery,
Loughborough
Central, GCR,
10th September 2017
(Colin James)



left D2271 back in one piece and re-liveried in BR green, previously Cadbury blue, Minehead, WSR,
11th September 2017 (Colin James)



right 92043 in the latest plain GBRf livery, Northampton (10.55) 18th September 2017 (Graham Stockton)
note that the lozenge extended onto the cabs has been kept unlike CI.66s



66192 the latest CI.66 to receive DBC corporate red, Toton 1st September 2017



above 390010 in revised VTEC livery on
delayed 1M11 10.40 Glasgow Central -
London Euston (15.02)
21st September 2017 (Colin James)

right promotional branding on the rear of
VTEC 43295 promoting Perth's Capital of
Culture 2021 bid, King's Cross,
21st September 2017 (Colin James)

below VTEC TRF 40805 the only one
not operated by GWR, with promotional
branding for Hull King's Cross,
21st September 2017 (Colin James)



right 66230 in
corporate DBC, Swindon
(Colin Pidgeon)





with more GWR DMUs gaining corporate green I have shown examples of most classes (just Cl.143 to do) so will not keep showing more, but it was worth illustrating the second Cl.150/0 (there are only 2) as it is more side on than 150001 shown in the August 2016 issue and a second Cl.165/1

above 150002 on 2M11 Swindon - Westbury, Swindon (13.15) 30th September 2017 (Colin Pidgeon)

below though the full GWR livery has been illustrated on 165103, 165112 is shown as it appears to be part finished without the GWR logo or stripe, Didcot, 29th September 2017



above 390104 sporting various vinyls celebrating LONGSIGHT 175 YEARS 1842-2017 Carlisle (12.05) 16th September 2017 (Mike Brook)



right 170203 stabled at Ipswich (12.10) 1st September 2017 (Keith Partlow)



a couple more Cl.170/2s in the revised corporate GA livery

left 170206 seen at Nuneaton on Crewe CS - Norwich Crown Point Depot after re-paint (17.43) 22nd September 2017 (Andrew Turnidae)



examples of more
DMU & EMU classes in the
latest corporate Northern livery

above the 30th unit to receive the new
livery, 150276 [57276] sits in dappled
sunlight from the slowly re-appearing
Carlisle roof, 11th September 2017

below 156444 replacing the usual Cl.37 +
DBSO Silverdale (09.03) 14th August 2017



319382
Acton Bridge
(12.56) 5th August 2017
(Mike Brook)

below 604 (08604) 'PHANTOM' has
been re-liveried from green to BR
blue and the nameplates have
gained a red background, Didcot
Railway Centre, 29th October 2017



five ScotRail Cl.170s, 170425/28/30/33/50 were branded in support of the Gay Pride weekend event
of the 19-20th August 2017 *above left top* as on driving cars, *above left bottom* as on centre cars,
Glasgow Queen St, 7th September 2017 (Iain Gardiner)

ICRS SALES

We have published 10 books since 2009, 4 are no longer produced and 4 are new 2017 editions (orange covers). The other 2, UKRS10 & 11 are currently unavailable having sold out with new editions due in 2017/18.

Books and Sundries can be ordered either:

ideally via BACS (bank details supplied with your order to editor@intercityrailwaysociety.org),
online via PayPal at www.intercityrailwaysociety.org
or by post from **ICRS, Mill of Botary, Cairnie, Huntly Aberdeenshire AB54 4UD**

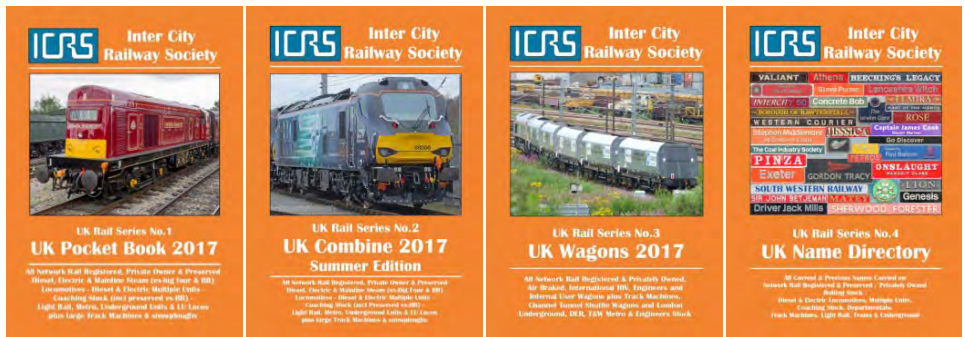
Please make cheques payable to **ICRS**, P&P is **FREE** to the **UK** for orders over £7.99
(multiple books may be posted separately depending on when they are released and/or weight for the cheapest postage option)

Whilst we do our very best to dispatch orders as soon as possible, we are all volunteers, so please allow 14 days for delivery, especially when a new book has just been released.

Note A5 books aster normally posted direct from the printers but the Pocket Book and Sundries are held by Trevor & Chris so may possibly be posted separately from books

If you have not received your book after that time please **ONLY** then contact **Trevor / Christine** (see p2 for details)

All books, except **UKRS01 Pocket Book**, are A5 wire bound allowing them to be laid flat and are printed on 90gm paper with plasticised coated covers which do not delaminate.



BOOKS: (Members receive up to 30% discount on ICRS books)

Titles:			Updated to	Member	Non- Member
New:	UKRS01	UK Pocket Book 2017	(1 st Apr17)	£8.00	£11.00
	UKRS02B	UK Combine 2017	(11 th Jul17)	£12.50	£17.00
	UKRS03	UK Wagons 2017	(1 st Mar17)	£10.00	£13.50
	UKRS04	UK Name Directory	(10 th Jul17)	£11.00	£15.00
Others:	UKRS10	Ultimate Sighting File Vol.1	SOLD OUT (next ed. due 2017/18)		
		– Mainline Diesel Locos			
	UKRS11	Ultimate Sighting File Vol.2	SOLD OUT (next ed. due 2017/18)		
		– Shunters, Mainline Electric & Prototype Locos			

SUNDRIES: (please add £1.50 P&P for orders under £7.99 in total)

Pocket Book cover		£1.50
ICRS pin badge		£2.50
ICRS printed pen		£0.50
TRACKS A5 Cordex binder (12 issues @ 48 / 64 pages: 2014-16)	LARGE	£5.00
TRACKS A5 Cordex binder (12 issues @ 32 / 40 pages: 2011-13 & 64 pages: 2017)	MEDIUM	£5.00
Polo Shirts: Original (logo only)	NAVY (S / XL)	£7.50
	WHITE (S / M / L)	£12.50
	NAVY (M / L / XL / XXL / 3XL)	£20.00
	GREEN (M / L / XL / XXL / 3XL)	£20.00
	MAROON (M / L / XL / XXL / 3XL)	£20.00
Proposed (name & logo)		

Details of books and sundries can be found on our website and are shown in **TRACKS** from time to time when released or advertised. Order forms for posting can be downloaded from the website.