

TRACKS



Inter City Railway Society – Jul / Aug 2018



Inter City Railway Society

founded 1973

www.intercityrailwaysociety.org

Volume 46 No.5 Issue 544 Jul / Aug 2018

The content of the magazine is the copyright of the Society

No part of this magazine may be reproduced without prior permission of the copyright holder

President: **Simon Mutton** - simonmutton@btinternet.com (01603 715701)
Coppercoin, 12 Blofield Corner Rd, Blofield, Norwich, Norfolk NR13 4RT

Treasurer: **Peter Britcliffe** - treasurer@intercityrailwaysociety.org (01429 234180)
9 Voltigeur Drive, Hart, Hartlepool TS27 3BS

Membership Sec: **Colin Pottle** - membership@intercityrailwaysociety.org (01933 272262)
166 Midland Road, Wellingborough, Northants NN8 1NG Mob (07840 401045)

Secretary: **Christine Field** - secretary@intercityrailwaysociety.org
contact details as below for Trevor

Chairman: filled by senior officials as required for meetings

Magazine:

Editor: **Trevor Roots** - editor@intercityrailwaysociety.org (01466 760724)
Mill of Botary, Cairnie, Huntly, Aberdeenshire AB54 4UD Mob (07765 337700)

Sightings: **James Holloway** - sightings@intercityrailwaysociety.org (0121 744 2351)
246 Longmore Road, Shirley, Solihull B90 3ES

Photo Database: **Colin Pottle**

Books:

Publications Manager: **Trevor Roots** - publications@intercityrailwaysociety.org
Publications Team: **Trevor Roots / Eddie Rathmill**

Website / IT:

Website Manager: **Trevor Roots** - website@intercityrailwaysociety.org contact details as above

Social Media: **Gareth Patterson**

Yahoo Administrator: **Steve Revill**

Sales Manager: **Christine Field** contact details as above for Trevor

Visits Co-ordinator: **Trevor Roots / Christine Field / Tony Whitehead**

Contents:

Officials Contact List.....	2
Society Notice Board.....	3-6
Events.....	6
ICRS Sales	80
Regular Current News / Sightings:	
Eastleigh Works Report.....	7-11
Franchise / Network News.....	60-63
Freight Matters.....	66
Infrastructure News.....	31-39
Light Rail & Metro News	57-58
Out & About Sightings	43-48
Stock Changes.....	67-68
Liveries.....	73-79
New Stock / Conversions.....	69-72/73
Transfers.....	72
Traffic & Traction News	20-30

Other Feature Articles:

Coach Matters.....	59
DRS Open Day Report.....	15-19
Grumpy Gricer Corner.....	51
Long Marston Visit Report.....	12-14
Narrow Gauge Photo Spot	42
Photo Spot: Driver Training	14
Rail Tour Photo Spot.....	40-42
Shunter Spot.....	48
Std Preservation:	
Galas.....	49-51
News.....	52-55
Photo Spot: Diesel.....	55
Photo Spot: Steam	19
Stock Moves	56
Yard Photo Spot.....	64-65

Front Cover Photo: TPE liveried 68021 'Tireless' on display at the DRS Gresty Bridge Open Day having recently returned from testing with Mk 5A coaches in the Czech Republic, 21st July 2018

£3.00 where sold separately

Printed & distributed in the UK by Henry Ling Limited, at the Dorset Press, Dorchester DT1 1HD

SOCIETY NOTICE BOARD

Editor's Comments:

The 4th August was a momentous day marking the end of regular standard mainline steam services in the UK. So 50 years on there are many celebrations and if you caught any on camera please send in. Also if anyone has memories or photos of those last few weeks can you please discuss about putting in **TRACKS** for others to enjoy. I was only 13 and 1 day in 1968 so don't really recall the magnitude of the event, though would have witnessed it living at the crossroads of the UK in Tamworth.

Firstly a huge welcome to all the new members who have pushed our membership up to a record 1233. Secondly an apology to you all as you have read in recent issues and will read below, I am still agonising over how to fit everything in and get on top of producing **TRACKS** which is a core part of the Society and I feel is becoming compromised in many ways by time pressures and the revised production schedule instigated for 2018 which can't keep up with the pace of events. I will be catching up on issues, so you will have fest of reading in the next few weeks, see upcoming schedule for **TRACKS** in the yellow box below.

I've said it before but seriously how can anyone be bored with the current railway scene...it is going bonkers !! Apart from the stock and franchise changes already made, the proposed stock movements coupled with further franchise changes due over the next 5 years in all sectors of the railway from over ground to underground are truly staggering. Now we have another major corporate livery change with Freightliner adopting a version of its Genesee & Wyoming parent company orange and black livery and LSL putting locos back on the mainline and rolling out further heritage number / livery combos on its fleet. On top of that, infrastructure improvements keep on coming with new and refurbished stations, electrification, doubling of tracks and new lines with Crossrail and HS2 to feature in coming years. I had my work cut out compiling the new Summer Edition of the Combine and Pocket Book but that will pale against the huge amendments with units and coaches in particular that will need to be incorporated over coming editions.

All of this at a time when I also decided that I needed a life by cutting down on the number of **TRACKS** issues but making it harder to find room to include these changes even with 80 pages. It was already proving difficult to keep in long running series which keep falling by the wayside. In truth the bi-monthly deadline is not working either with double the amount to filter and edit and after 2 months so much has changed that when writing it up it seems like old news. It is hard to keep track of everything and several items I intended to put in last month were overlooked which seem too out of date to then include in 2 months time, which by then are overtaken by other events as with a topical photo received a day after **TRACKS** has been finished which can then be superseded....aargh !! Another problem is we pride ourselves on producing a mag with up to date info which bi-monthly negates and actually makes reporting topical difficult, as things are happening so fast.

To put the time pressures in context we have been away for 48 days, 33 to ICRS events out of the last 152 (8th Mar – 7th Jul) and as processing book orders and keeping up with stock changes for the books is a daily task you can see the glaring problem straight away. The utopian idea I would have time to write up articles ahead of time to put in the supplements has also failed. I would need a black hole of 6 months when nothing happens and I can catch up but I can't see that ever happening. Chris is also getting not unreasonably twitchy as am I, that nothing can get done on the house and we were unable to take real advantage of the dry weather....holidays, that is visiting railway facilities or selling books!! On top of that as I mentioned we are caring for my parents whose needs are growing and much of this has fallen to long suffering Chris whilst I slog away on the computer. The other problems are trying to advertise events and new editions of books at the right time which is easy monthly, but very difficult bi-monthly.

Reluctantly it seems the only solution is therefore to go back to 10 issues of 64 pages but this will increase the overall annual pages again. This more regular deadline will be better for members and better met as the bi-monthly ones have all slipped which then leads to more work answering queries on "when is it coming out" or "I've not received" when it hasn't come out. It is also difficult to plan properly with our printers who themselves can be busy and this affects our ability to accurately forecast when **TRACKS** will hit your mat. The bi-monthly schedule does cause confusion with queries on why no mag in the blank months. The last issue was also a nightmare in that it was already late by

3 days and with our impending travelling down to Long Marston getting it to the printers meant three consecutive nights up until 02.00, 02.00 and 03.45, the last the night before travelling. That also meant hardly any proof reading could be done except by night owl Colin and early riser Peter but remarkably led to fewer typos than normal (see below). I just then about managed to get website changed and pdfs emailed out to what is now about a fifth of the membership. We then loaded the stock, jumped in the car and drove 400 miles. I think I was still a bit hazy on the Saturday which at least seemed to be enjoyed by all. That was then immediately followed by the nightmare of compiling 4 books at once in order to get them to the DRS Open Day just over a month later. All that whilst dealing with book orders at an average rate of 6 a day since the start of the year, a few of which went awry due to the pressure. **TRACKS** didn't get a chance to be started on hence why no **Summer extra** with this issue. Those 48 days away also equate to about 14,000 miles in the car most of it fully laden with ICRS stuff and that usage meant we have just exchanged it a year early as it had reached 43,000 in 2 years, all 'leisure' mileage. Again I have been up until 04.00, 01.30 and 02.00 this week to get this issue away to the printers 5 days late on the 10th Aug..

Errata: A few from previous issues have surfaced.

Mar / Apr 2018 p64 41009/28/29 should be 42009/28/29 and 42357 should be 42557, p66 42102 to 48104, p65 DR80203/03/07 should be DR 80202/03/07, p68 800201/202 should be 802001/002.

May / Jun 2018 p25 37404 should be 37407 partnering 37423, p29 credit for 800008 should be David Williams, p57 the bottom caption under the Warships should be D821 + D832 passing eastbound at 16.00 on 14.30 Bridgnorth – Kidderminster Town service, approaching Foley etc.... and p67 credit for *Roger Hoskins* ... nameplate should be Martin Hall.

Publications (see rear cover): GET YOUR NEW BOOKS NOW

As stated above 4 new editions were released at the DRS Open Day, **UK Combine Summer Ed** and for the first time **UK Pocket Book Summer Ed** (wire bound) and the long awaited **USF Vols.1 & 2**. For those who haven't seen the **USFs** sample pages can be viewed on the website as can up to date pages from all our current books. This was important as the format / style has changed in most from previous editions. Regarding the **USFs**, you may have seen other books recently published which purport to be definitive guide to all diesel & electric locos but our books are hopefully more useful to spotters, with a full cross ref table of all re-numberings and disposal locations. We may not have glossy photos to illustrate the classes but that is what **TRACKS** is for, no need to add pages and price to the books. I managed to cut the size of the combined volumes down from 385 to 336 pages but that is still too bulky in wire bound format to combine the two books into one volume in case anyone wonders why we do two volumes. It also allows for further additions to the data in the future.

I can now have a rest from book compiling until the New Year but that doesn't stop the orders piling in and the time needed to process them. Up to the end of July 2018 it worth comparing both orders and books sold to the 2017 figs for the whole year.

Year Orders	2018 (to date)	2017
	1029	997

Interestingly the ratio of unique sales of Members to Non-Members (2018 v 2017) is similar with 494 v 485 and 326 v 325 though the 2018 figs will increase

Book Sales	Post / Paypal	1512	1313
	Ian Allan shops (B'ham & Waterloo)	527	349
	Shows / Member Visits	332	279
	TOTAL	2371	1941

The decision to produce a wire bound **Pocket Book** has also paid off and been very popular especially as a Summer Edition has been produced for the first time. This has pushed overall sales of PBs (both versions) up to a record 862 sold and counting. We only sold 555 (spine) in 2017 but we have already sold 671 wire bound versions. It has also not affected **Combine** sales. However the original version with spine is still left as an annual edition, but if there is sufficient interest shown a limited run (100) as a Summer Edition could be produced in 2019, especially as the first run of 200 has nearly sold out for this year. That will mean that there will be equality of up to date data between the two versions. If you buy a spine version please let me know if that proposal has legs.

Sundries:

Polo Shirts: We have got four colours to choose from, with NAVY included in our small stock. This is the same colour as the original shirts, slightly lighter than the DARK NAVY. Remember if not in stock we will need to order so it will be 28 days from the point sufficient orders have been received.

Baseball Caps: The range of baseball caps has grown to three colours, BLACK, NAVY & BURGUNDY. Having sold out of our first batch, more will be available by the end of August.

Delivery is quick if we have stock of the above clothing, if not it will be 28 days to allow for the 3 weeks it takes to order from our supplier. However it could be longer if not sufficient orders are in hand to make up the minimum 10 items needed to keep costs down

Hi-Viz Vests: As we had a very small quantity of vests for members to borrow, some not coming back!! we have now re-stocked for you to buy. They are orange hi-viz vests in various sizes, so if you need one for visits then they will be available on the day for £5.

Membership Matters: New Members: (63)

(* ex-members re-joined) (AFC – Additional Family Child, AFA – Additional Family Adult)

Roy Barber (Wimborne), Carol Barber (AFA) (Wimborne), Steve Barbier (Middlewich), Peter Bartlam (Felpham), Mark Beresford (Warrington), Keith Bradley (Newcastle-upon-Tyne), Stanley Brown (Carlton), Royce Burton (Newark), Stephen & James (AFC) Butterworth (Manchester), Colin Cheeseman (Rowland's Castle), David Cook (Mitcham), Lyndon Copley (Derby), Michael Dickinson (Preston), David Dineage (Walsall), David Farrow (Stafford), William Forbes-Watson (East Kilbride), Keith Fullard (Retford), Stephen Galling (Gloucester), Louis Guidi (AFC) (Wells), Michael Goodhall* (Tewkesbury), John Goodyer (Southampton), Mel Gosling* (Sheffield), Richard Golding (Crawley), Michael Green (Lockerbie), Jamie Hall* (Hull), Paul Heaton (Burnley), Peter Holland (York), Terry Holland (Laindon), Jonathon Hopkins (Castleford), Tony Jackson (Exmouth), Michael Leveridge (Dewsbury), Andrew Long (Dewsbury), Roger Lowe (London), Gareth Maguire* (Prestatyn), Richard Mitchell (Newport), David Moore (Prudhoe), Chris Ness (Sheffield), Stanley Parfrey (Liverpool), Gary Pierce (Cardiff), Derek Place (Ringwood), Chris Platt (Orkney), Andy Pollard (Bracknell), Sean Pritchard-Williams (Holyhead), Graham Rankin (Honiton), Graeme Rendall (Morpeth), Owen Rhodes* (Nottingham), Stephen Ryans* (Leicester), Martin Sampson (Bridgwater), Peter Sanderson (Loughborough), Rod Shaw* (Portslade), Arthur Shelton (Birmingham), John Singleton (Blackpool), David Skitt (Telford), Ian Stringer (Leicester), Richard Vallender (Gloucester), Michael Warwick (Oxford), Neville Willmott* (Norwich), Michael Windsor (Bristol), John Woolley (Toton), James Woodward (Nuneaton) - a warm welcome to you all.

Obituary: Sadly we have recently lost Rod Johnson from Ilkeston who was a photo contributor from the start of his membership in 2016 through into 2017 but stopped due to illness. Condolences go to his family.

Society Magazine TRACKS: For current info refer to the **TRACKS** page of our website.

TRACKS is distributed direct from the printers to members in a clear plastic wrapping with an address carrier sheet (reverse printed with a Renewal / Reminder form if appropriate). If any member fails to receive their copy after one week from the estimated delivery date below then please contact the Editor.

Next issues: Sep + Summer extra then Oct, Nov & Dec (making 10 issues for 2018)

The latest date for articles / info for the **Sep 2018** issue is **Friday 24th August 2018**
with delivery to members after **Wednesday 11th September 2018**

please check the **TRACKS** page on the website for date of posting from the printers

Magazine Contributors: Thanks to Chris Addoo, Ian Bain, Paul Baker, Brian Bentley, David Berg, Phil Bonsall, John Brace, Ian Briggs, Chris W Brown, Harold Cooper, Spencer Conquest, Peter Davis, Sean Davies, Dennis Dey, Neil Dix, Derek Everson, Martin Evans, Tony Fawcett, Iain Gardiner, Martin Hall, Michael Hayman, James Holloway, Geoff Hope, Harold Hull, Colin James, Alan Jones, Terry Lea, Steve Lord, Steve Mann, Ian McAlpine, Stuart Moore, Paul Normanton, Gervase Orton, Keith Partlow, Gareth Patterson, Colin Pidgeon, Colin Pottle, Toby Radziszewski, David Rice, Dave Robinson, Paul Rosser, Mike Rumens, Matt Ryder, Norman Smith, Graham Stockton, Geoff Storey, Paul Sumpter, John Talbot, Andrew & Michael

Turnidge, Carl Watson, David Williams & Trevor Roots. We are sorry if anyone has been missed. Photos not credited are by **Trevor Roots**.

EVENTS

All 2018 events organised, either confirmed or with provisional dates are shown below. Further events may be added in due course between issues of **TRACKS** so keep an eye on our website. **PLEASE DO NOT** try to book places for Members Only Visits with provisional dates shown by TBC until they are formalised or where the event though confirmed is many months in advance with details yet to be provided. Once they have, **BOOKING OPEN** will be shown alongside and a request will be made for you to book your place. If you are coming to an event the details are always in **TRACKS** or on the website. Please contact the stated organiser and do not contact Trevor / Chris on the landline in the days before as we will have started travelling. If you must contact me use the mobile, it is always on even if it is not smart !! I only want a phone not emails on the go, however useful as that might be, I would never have a break.

Please note that there is no excuse for booking then not notifying us you cannot then attend or have been delayed travelling on the day, genuine reasons apart. As with events where numbers need to be accurately known by the hosts for a tour, food or room capacity this is not acceptable. We have tried to ease the official's organising burden and saving you money in postage by allowing members to pay on the day, but this can be abused as it can be then seen as nothing to lose if you can't be bothered to turn up. **Therefore members who persistently do not turn up and do not have the courtesy to contact us at the time or afterwards will not be welcome to book future tours without a non-returnable payment up front.**

MEMBERS ONLY VISITS

West Coast Railways, Carnforth: Sat 13th Oct 2018: FULL

With both our first two trips booked up, the first was on the 11th August, we will provide further dates in 2019. If anyone wishes to pre-book, in particular those that could not make the dates or having joined after booking closed, then a provisional list will be maintained

Eastleigh Works: Sat 8th Sep 2018: LAST FEW DAYS TO BOOK

Bookings can now be made for our annual Members Only visit to Eastleigh Works. There will be no tickets and therefore no need to send money, with the fee of £15 payable on arrival. Please be at the main gate around 13.30 at the latest so that you can be let in, pay your money then gather for the safety briefing, prior to starting your visit at 14.00. The fee covers the normal Arlington visit fee (which they donate to charity) and organising stewards. You will get access to all areas until 16.30 and cab rides...locos TBC. Drinks and snacks will be available with our sales stand as in 2017. Please apply to Tony Whitehead, who has kindly agreed to help pre-organise this visit, clearly stating your name, membership number, a contact telephone number. **Email: anthw884@gmail.com Tel: 07895 386777** **but no calls after 20.00 in the evening please** as he will be in bed early as he has to be up for work at 04.30 each morning. If you have any trouble contacting Tony then contact Trevor or Christine (details on page 2) who will be there on the day. There is no limit so applications can be made right up until the day. **But please if you apply to attend and then cannot go, either inform Tony (up until a few days beforehand) or if you have problems just prior to or on the day then contact Trevor (07765 337700).** With escorted access required to let you in, **it will not be acceptable to just not turn up or not let us know you are running late, as we will not wait around to see if you arrive**

PRESERVATION GALAS (to be attended with our sales stand) nothing planned

OPEN DAYS (to be attended with our sales stand)

Nothing announced though we were approached at the DRS Open Day about attending a Ramsgate Open Day in March 2019. Possible traction includes steam. Watch this space.

OTHER EVENTS (to be attended with our sales stand)

Warley National Model Exhibition – Sat 24th-Sun 25th Nov 2018

EASTLEIGH WORKS REPORT

by **Norman Smith** (Photos by **Carl Watson** unless shown otherwise)
for the period from 1st June 2018 to 31st July 2018

General: Ex-De-icing Units 68501/504 are being converted to Arlington Translator Vehicles. There is a third one on site, 68505, which at the moment is not being done.



Locos:

04/06 73962 t&t 73965 were on and off site with a NR test train and left for Hither Green on 07/06.

07/06 57003 + 57011 left for Willesden Brent.

07/06 66526 took 66557 to Southampton Freightliner Depot.

11/06 66784 (ex 66081) in new GBRf livery left for Eastleigh Yard.

13/06 37612 t&t DBSO 9703 were on and off site with a NR test train and left for Reading Triangle Sidings on the evening of 14/06.

14/06 73136 arrived from Eastleigh Yard for new wheels.

03/07 37175 t&t 37254 were on and off site with a NR test train and left for Tonbridge West Yard on 05/07.

06/07 66754 took 66785 (ex 66132) in its new GBRf livery to Tonbridge West Yard.

10/07 59003 came in for an exam and left the following day.

11/07 66184 arrived from Eastleigh Yard for a repaint and re-numbering having been bought by GBRf (see opposite).

12/07 73101 & 73139 arrived by road from Derby RTC having been bought by GBRf (see above middle and opposite top).





- 16/07 47727 brought in Translator Set T7, 64664/64707 from Doncaster Works Wagon Shops (see below), T7 returning behind 66789 four days later.
- 26/07 66710 came in for an Exam and left 2 days later.
- 26/07 66846 brought in 37901 from St. Leonards (see opposite bottom).
- 30/07 66008 arrived from Tonbridge West Yard for a repaint and re-numbering having been bought by GBRf.
- 31/07 59003 arrived for minor repairs



31/07 73961 t&t 73962 arrived with a NR test train from Derby RTC.
 31/07 Change of plan as 66008 was put it back into traffic by GBRf heading for Westbury!

Units: Siemens Units receiving modifications during Jun/Jul:
 444003/004/006/008/013/019/031
 450006/007/010/013/014/025/028/
 041/079/086/093/105/110/124

25/06 442406 brought in 442417 from Bournemouth Depot (see right) and returned there with 442413

31/07 442406 brought in 442420 in grey livery and returned to Bournemouth solo

51388 the final Swanage DMU has been repainted (see below taken on 08/06



Coaches: Coach Trips in/out during Jun/Jul were:

20/06 73962 + 73963 brought in LUL 4-TC, 70823 + 71163 + 76297 + 76324 off a GBRf Charter.
 18/07 66162 took Mk 1 Kitchen Buffet 1691 (see bottom) to Eastleigh East Yard for onward movement to Burton by road.

coaches repainted chocolate & cream have been Mk1 RMB 1832 (see left) & FO 3146 repainted ZG 14/07 (see below)



Riviera Trains stock moves for this period, including loco:

02/06 66133	Torbay Express Ltd	"The Torbay Express"
09/06 66129	Pathfinder Tours	"The Peak District Explorer"
09/06 66102/181	UK Railtours	"The Last Invader"

16/06	66133	Pathfinder Tours	"The Cornishman Express"
20/06	73962/963	GBRf	GBRf Charter
23/06	66035/133	UK Railtours	"Another Liverpool Docker"
27/06	66744/755	GBRf	GBRf Charter
30/06	66755/786	GBRf	GBRf Charter
30/06	66133/140	Pathfinder Tours	"The Trent Ouse Docker"
01/07	66755/786	GBRf	"The Itchen Scratch"
14/07	66106	Torbay Express Ltd	"The Torbay Express"
(returned by 66137 on the 16/07 see photo opposite top)			
14/07	73961/963	UK Railtours	"The Sunny South Express"
21/07	47727/66741	Pathfinder Tours	"The Solent & Sussex Explorer"
28/07	66037	Torbay Express Ltd	"The Torbay Express"



Underground: Movement of Spoil & Ballast Wagons for this period

Arrivals: 239/242/244/248/250/252/256/260/266/267/272/273/276/278/280/281/286/290 (260/267 had returned for additional work and then left) **Departures:** 241/243/249/260/261/262/263/267/268/271/273/274/277/279/282/284/288/290.

Withdrawn: 232/234/237/238 left by road for the salvage yard at S. Norton and Co. Ltd., Southampton W. Docks (see 234/237 leaving on 12/06 right)

Wagons: Scrapped: 370039/76

Wagon Trips in/out during Jun/Jul were:

05/06 47813 brought in 4025/27/28/30/32/62/71/96, 4105/08/10/36/38 from Long Marston
47813 left for Wembley Yard on 06/06.

07/06 FL out 93481

14/06 FL out 93302/393

27/06 DBC in 87.4333.016-1/060-9

DBC out 503020/063/066, 70.6905.003-3, 87.4384.031-2

05/07 FL out 93308/386/400/434

12/07 FL out 93476

13/07 66050 took 4023/25/35/45/56/71/96/97, 4106/08/12/17/36 to Llanwern Exchange Sidings

18/07 DBC out 9806, 87.4384.039-5.

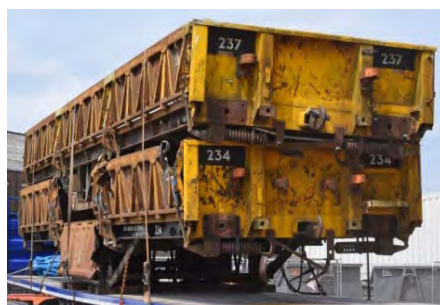
19/07 FL in 93456/487 FL out 92543, 93354/381

24/07 66552 brought in 370039/040/048/051/061/065/070/076/136/200 from York Yard South

24/07 47813 brought in 4039/41/49/50/52/58/59/67/95, 4126/29/39 from Long Marston (see opposite top)

26/07 FL in 93457/458

FL out 93351





OTP: The following arrived for maintenance:

22/06 Tamper DR73113. Left for Westbury 26/6. It returned on 02/07 for a new engine and left for Reading Triangle Sidings five days later.

25/06 Tamper DR73122 & Ballast Regulator DR77010. They left for Tonbridge West Yard on 29/06



Branch Line Society (BLS) Tour: The BLS conducted a tour of the Works on the 2nd June hauled by 323-539-7, 07007 & 73133 using van B786968 'Molly' which was brought in by road from Barrow Hill the day before. It returned on 14/06.

right
47815
undergoing
crash
repairs on
08.06



LONG MARSTON VISIT REPORT

On a reasonably warm day 110 members had the pleasure of trekking around the 130 acres of Long Marston. Sadly a few failed to attend who did not contact us either on the day or since. Unlike in 2017 the Compound was opened almost immediately after we were released at 10.15 with the strict 1 hour limit applying which was a struggle for a few members who just made it out whilst we waited for them. Unfortunately one member was late arriving and got to the gates just after they were locked..next year.

Though the locos and coaches were unmoved from their 2017 positions, the wagons were all different. To accommodate the Cl.319s more sidings had been laid on the western side. The two bonuses of the day were firstly the arrival of 37611 with 350251 and its subsequent departure with 350266 followed by 01547 shunting 350251 around to the paintshop. Secondly all the Vivarail Cl.230s bar 230004 away for painting were on view with both sheds open. Set 230001 was also on test alongside 2 car battery demonstrator 230002 which myself and Colin Pottle had a guided tour of. Unfortunately for me these delays meant I failed to completely trudge up and down all the sidings and missed most of the stock to the west of the Vivarail sheds hence the overview from the bridge after leaving (see below). This was more of a nuisance in my attempt to accurately record all stock on site, whatever the official stock list said. However I knew there would be a saviour in Neil Dix whose records combined with mine meant the list should be complete and also allowed the diagrammatic plan to be completed.



The stock list below shows roughly in which area where stock was located. For a more detailed position of each vehicle download the diagrammatic map from the website which you will need to enlarge whilst viewing.

Stock List:

Compound: **Locos:** 08578/653/701, 20016/81/88 (carries 2017), 01552 [167V] TH 0-6-0DH, 5 [7161] HE 0-4-0DH, 7 (31) [6973] HE 0-6-0DH, 22 [D1231] EE 0-6-0DH, 28 [7279] HE 0-6-0DH, [8902] 'Emma' HE 0-6-0DH, [7003] 'Rachael' HE 0-6-0DH, 503 [6614] HE 0-6-0DH, [10279] RR 0-6-0DH, [7276] HE 0-6-0DH, [5395] GEC 0-6-0DH, 870 [509] AB 0-6-0DH, 871 [510] AB 0-6-0DH, HO14 [10119] S 0-4-0DH

DMU: Cl.117 59505 **Coaches:** Mk1 34531, Mk2 17031, Mk3 11005

Wagons: **JSA** 4033/39-42/46/47/49/50/52/54/57-59/63/65-67/73/75/76/95/98, 4100/02/03/07/15/16/22/23/25-29/31/32/34/39, **JNA** 4408, **FRA** 613001/04/15/21/33/35/41/43, **TEA** 85974, 87483, **KFA** 92640, 93335, 95388, **TDA** 86931/49-52/55/58/60

Access track to Compound: **KFA** 92555, 93360

Eastern side:

Coaches: **Mk2** 6722, **Mk3** 10201/02/15/22/26/33/35/37/42/46/50/57, 10682, 11021/33/79/97, 12008/29/58/95, 12101/04/44/56/60/63/65, 40419, **DVT** 82106/10/16/20/22/23/25/37/38/41/48/50

EMUs: 71961-63, 3190003/004/010/214/217-219/421-423/425/426/428/430/432/435/437-440/443/449/451-454

Wagons: **TTA** 60771, **JXA** 3000/006/101/104-107/113/118/128/133/138, **JSA** 4119, **PFA** 92690

Trams: Metrolink 1016/22/24/26, Midland Metro 07/10/11

Spare D78 Stock: 7000-06/08/09/13/16/20-26/29/30/33-35/38/39/41/42/44/46/47/49/51/53/57/60/61/64/70/72/73/75/77-81/85/88/89/92/93/95-97/99, 7102/05/08/09/11/12/14/15/18/19/21/24/25, 7502-07/

09/13/16-21/24/25/30-39, 17003/13/20/21/35/36/47/64/77/80/85/88/92, 17100/02/04/06/12/18/19/24, 17510/20

Paintshop: DMUs: 143623, 165129/132

Around Access Road near Paintshop & Car Park:

Locos: 873 [512] 'John Boy' AB 0-6-0DH, [160] Minilok 8w, (Q) Minilok 4w
DMUs: 51352/51376 **EMUs:** 71960/64/65 (bodies on stands) **Mk3** (generator) 96372/73/75
OTP: Railvac: 99.70.9515.004-8, **Rail Grinders:** 79200A-C, 79201A-B, trolley ?
99.70.9522.020-8, 33.70.4746.197-1
Crane: 34358 **Wagons:** IWA 33.80.2693.025-9 **KFA** 93384/398/467



two views looking over the site from the road bridge which crosses the access from the branch line
above looking across the open middle grassland with 977968 + 977967 to the left of the preserved shed in the foreground and lines of Cl.319s beyond on the eastern side
below looking north over the western side with 319459 & 319444 to the fore with the roof of IZA 23.80.2929.129-7 sticking above the trees on the right and the scaffolding around tanks being purged, the orange wagon in the centre is JNA 27014



Western side:

Locos: 01547 [308V] TH 4wDM (moved to near paintshop in afternoon), 86229, 37611 (visiting / departing on Cl.350 transfer) **EMUs:** 350251/266 (arriving / departing), 319001/006/009/011/436/444/445/447/455/459

Vivarail DEMUs / Battery*:

230001 (7058+17128+7511)/002* (7122+7067)/003 (7069+7127)/005 (7066+7128)

OTP: MPVs: DR 98006/13, trolley TNS 104

Wagons: JSA 4020/21/36/43/69, 4109, TDA 86930/32-42/44/45/48/54/56/59/61/62

TEA 82214-27 88044, **KFA** 97304/08, 870264, **IZA** 23.80.2929.129-7, **JTA** 26554/56/57, **JUA** 26841

Spare D78 Stock: 7011/14/15/17/19/28/43/45/50/52/54/55/59/62/63/65/68/71/74/76/82-84/86/87/90/91/94, 7101/04/06/10/13/16/17/20/26/29, 7501/10/12/14/15/22/23/28/29, 17011/15/23/25/29/43/45/49/50/52-56/59/62/63/65/67-69/71/76/78/82-84/86/87/90/96/98, 17103/10/13/14/16/17/20/27/29, 17522/28

Vivarail Shed: D78 Stock: Inside: (under conversion to Cl.230) 7066 (300005), 7127 (300103)
Approach tracks: 230001/002, 7031/48/56/98/103, 17058 To Rear: 17066

Vivarail Shed (ex-Wagon Works): D78 Stock: (conversion to Cl.230) 7069 (300003), 7128 (300105)

Loading Ramp & Adjacent Tank Purge (scaffolding):

Locos: WD 70047 [362] AB 0-4-0DM (SBR) **Coach:** 96181 (uf) **Wagons:** brake van 68776, JNA 27013/14, TDA 86953/57, ICA 35.70.7790.001-1/003-7/004-5/010-2/011-0/023-5/024-3



South-western corner by branch access / Preserved Shed:

DMUs: Cl.121 977859 (55025), Cl.117 977987 (51371), 977988 (51413), 158xxx (spare bodysell) **Coaches:** Mk1 3746/49, 25735, Collett 4777 (060907) **Wagons:** JSA 4029/44/51/53/99/137 JNA 27003,

left 230002 (300102, ex 7067 leading)

230001 (300101, ex 7511 leading)



PHOTO SPOT: DRIVER TRAINING



above ex-GWR 43135 on ScotRail HST driver training, Haymarket (14.14) 3rd July 2018 (Iain Gardiner)

right 68031 t&t 68025 on TPE driver training 5Z68 Crewe - Carlisle then 5Z69 back to Crewe, Carlisle (13.18) 28th June 2018 (Spencer Conquest)



DRS OPEN DAY REPORT

The effort to get our sales stand there with 4 new books to launch meant leaving Scotland on Tuesday 17th and travelling down to Botley to pick up 8 big boxes then struggling back in a very heavily laden car up to Crewe on the Friday via the A34, M40 and M42 (brief respite on the M6 Toll) amidst the chaos of Friday afternoon compounded by end of school term in England. Crawling along completely scuppered any plans to drop in at a few railway locations and then it rained as we arrived at Crewe. It is hard to endure when travel is so free flowing back home.



left to right the hard working team, Peter Britcliffe, Colin Pottle, James Holloway, Christine (my better half) & Simon Mutton...guess which one forgot their nice new polo shirt !!

Though extremely busy, our best show ever, it was nice to meet quite a few members during the day even if time was limited for chatting, apologies for that. I gather some were there but didn't catch my eye, please do so next time. It was also nice to see several members wearing their new polo shirts (someone on the Committee forgot theirs), a good advert to the 'heathens' who are not yet members !! As stated we enrolled another 15 members and sold 188 books, which was pleasing as that meant half of those picked up from the printers the day before did not have to travel home.

below 68019, 57007 (prior to naming) & 88002





As for the Open Day itself, exhibits were DRS locos exclusively, though the two TPE liveried CI.68s were on display having only just arrived back from their sojourn abroad, hence not even time for a wash and spruce up. There were 19 locos on display, only 4 in the shed (to make way for many more trade stands) and 15 in the yard with another 6 stabled outside the fence / shed alongside the Shrewsbury line so not all could be seen. The two resident Beilhack snowploughs were present as was a nuclear flask wagon, something different.



68020, 57301 & 37259

right 37407
below 57312 + 66425 & 66421 (prior to naming)



During the afternoon two locos were named, 66421 'Gresty Bridge TMD' (see opposite top) and 57007 'John Scott 12.5.45 - 22.5.12' (see overleaf) previously carried by 47805.



*above 57303 &
snowploughs ZZA ADB 965581/580
with nuclear flask beyond*

left 37218 + 37069

below 20303 + 20302 + 68014



Stock: Shed: 37259/ 57301 'Goliath' / 68020 'Reliance' / 029 **Yard:** 20302/03, 37069/218/403 'Isle of Mull' /407/558 'Avro Vulcan XH558' /606, 57007/303 'Pride of Carlisle', 66421, 68014/019 'Brutus' 021 'Tireless', 88002 'Prometheus', FNA 11.70.9229.004-0, snowploughs ZZA ADB 965580/581

Outside compound: (in order west to east) 57312, 66425/424, 37422, 57002/003



66421 prior to naming



During the afternoon a special from London Euston arrived at Crewe with 88005 t&t 68016 with stock 17105, 3664, 3304, 1657, 3356, 3345, 3397, 1200, 5998, 5961, 6024, 6054, 6158. It is seen left heading the return to Euston passing through Ruabon at 16.03 (Martin Evans)



PRESERVATION PHOTO SPOT: STEAM



*left Bulleid Merchant Navy
4-6-2 35018*

'BRITISH INDIA LINE'

*appeared at the Wensleydale
Railway over the weekend of the
21st & 22nd July 2018*

*and is seen here at Leeming Bar
preparing to depart
the line with 37516
and Mk2 support coach 99312, 23rd
July 2018*

*WCR Mk2 coach 99718 was also
brought in with 35018 and is staying
on the line temporarily with the
added bonus it was used in the
Harry Potter films*

TRAFFIC & TRACTION NEWS

June 4

66413 passed Swindon at 11.15 on 4L31 Bristol – Felixstowe. A last chance to this hybrid livery as it is now it the new corporate orange livery of Genesee & Wyoming FL (Colin Pidgeon)



June 5

66789 with a rake of ex-DBC HTA hoppers, the first from Papworth Sidings, passed Ely West Jct at 17.47 on 4M86 Ely - Wellingborough (photo at end)

June 6

67020 passed Spittal, Berwick-upon-Tweed at 12.57 (photo at end)

June 9

A couple of transferred DMUs to Northern were seen at York today. De-branded ex-ScotRail 170478 at 10.55 having worked 2C20 from Leeds via Harrogate and due to work 2C33 11.11 service back and ex-GWR 153380 at 11.07 about to work the 11.17 to Huddersfield with 158784 (David Rice)



June 10

68001 t&t 68004 passed Cossington at 17.06 on Norwich - Burton, returning from the previous days NENTA tour (Ian Briggs)



June 13

56078 was seen in bay platform 2 at 10.24 (Spencer Conquest)



June 14

88010 t&t 88009 passed Spittal, Berwick-upon-Tweed at 09.00 on 6S41 Carlisle Kingmoor Siding - Torness PS (Gareth Patterson)



4-6-0 45212 passed Swindon at 12.55 on 1Z11
London Paddington – Cardiff (Colin Pidgeon)



June 15

An increasingly rare sight of uniform blue GWR 43131 and stock on the diverted 1A85 09.55 Penzance - London Paddington passing Pinhoe. This was subject to severe delay due to single line sections and passed Pinhoe around 50 minutes late arriving into London 105 minutes late due to a loss of its path. Yesterday most of the afternoon delays on this stretch of line where due to vandals throwing signs and other debris onto the line around Whimple, which were then hit by another train (Matt Ryder).



47832 t&t 47826 passed Doncaster at 13.24 on Crewe - Ely Statesman, Doncaster (Andrew Turnidge)



June 19

66727 passed Wellingborough with the LT 4-TC stock at 12.09 on 5Z66 Midland Railway, Butterley - Ferme Park (photo at end)

June 21

70806 powered 6C36 08.00 Moorswater - Aberthaw empty cement tanks through Exeter St David's at 11.02 (Chris W Brown)



86401 Glasgow Central at 22.21 (Iain Gardiner)



800201 was seen lined up alongside 390047 at Edinburgh Waverley at 20.36 (photo at end)

June 24

43050 t&t 43054 passed Abbots Ripton at 10.48 on 1A19 Leeds - King's Cross (photo at end)
67028 + 82219 DVT t&t 91130 passed Abbots Ripton at 10.42 on 5Y11 Doncaster - Bounds Green (Colin Pottle)



June 25

68033 was seen arriving into Edinburgh Waverley at 17.18 on 5L69 15.59 Motherwell TMD ecs showing the truncated connection to platforms 5/6 being extended (Iain Gardiner)



June 28

66061 passed York at 11.40 (Paul Baker)



37601 approaches Wellingborough at 11.41 on Wembley - Leicester LIP (photo at end)

June 30

37401 en route to KVV Diesel Gala seen stabled at York at 08.50 (Steve Lord)



08580 recently returned from derelict condition by RSS at Wishaw at Ketton Cement Works during their Open Day (Ian Briggs)



It had been thought the summer Saturday Devon and Cornwall loco hauled working had ended in 2017 but this proved premature when the working appeared in the 2018 timetable. Operating as 2E75 10.26 St Erth - Exeter St David's then 2C51 17.51 Exeter St David's to Penzance, the train is seen here on the latter leg passing Exminster on behind 57604 (Chris W Brown)



47580 passed Harrowden Jct at 20.34 on 1Z48 York - Ealing Broadway (photo at end)

July 2

D1935 + 4-6-2 34052 + Mk1 support coach passed Didcot at 14.47 (Spencer Conquest)



90012 back in traffic after overhaul at Crewe stands at Ipswich at 12.15 on the 11.30 Norwich - Liverpool Street (Keith Partlow)



66777 passed Loughborough 7 Brush Traction at 18.25 (Harold Cooper)



70807 clagging through Didcot at 11.10 (Spencer Conquest)



July 3

70814 approaches March at 15.04 with a lightly loaded, one MHA, 6L37 Hoo Jct - Whitemoor Yard (Colin Pottle)



July 7

66736 + 66770 + 66709 passed Doncaster at 11.46 on Decoy Yd - Tyne Yd (Andrew Turnidge)



July 8

L24 was seen stabled in platform 1 at Baker Street at 19.27 but Colin had no time to check other stock (Colin Pottle)



July 9

56103 passing Camden Rd at 14.23 on 6M05 11.50 Barrington - Wembley (Colin James)



July 10

DVT 82223 t&t 91104 was seen passing Spittal, Berwick-upon-Tweed at 16.33 with the right hand light cover wide open (Iain Gardiner)



66743 t&t 66746 seen at Didcot at 16.47 on 1Z82 from Bath Spa then worked the train back at Hanwell, bringing the stock back at 00.06 to work Orton Mere, as 1Z84 (Spencer Conquest)



July 11

59203 + 59103 passed Swindon at 12.35 on 7A09 Merehead - Acton, Swindon (photo at end)

July 14

60007 + 66076 + 66169 + 66075 + 66167 passed Swindon at 13.40 on 0O12 Margam – Eastleigh (photo at end).

73969 Glasgow Central at 08.47 (Iain Gardiner)



July 16

73970 Glasgow Central at 00.17 (Iain Gardiner)



July 19

59003 passed Didcot at 16.41 on 6M40 Westbury - Cliffe Hill Stud Farm (Spencer Conquest)



July 21

67013 + DVT 82308 departed Crewe at 13.47 to Manchester (photo at end)

Stanier Black 5 4-6-0 44871 & Jubilee 4-6-0 45690 'LEANDER' were seen at Crewe at 14.04 working from Carnforth hauled by 37706, with coaches 99035 and 17025, 45690 & 17025 uncoupled and went to the heritage centre whereas the rest of the convoy went on to Bristol (Neil Dix)



July 24

50008 + Stone Blower DR80207 passed Harrowden Jct at 10.06 on 6Z45 Leicester LIP - Dollands Moor (Colin Pottle)



66781 (ex 66016) passed Ipswich at 18.25 on 4M02 17.34 Felixstowe North - Hams Hall (Keith Partlow)



July 26

70802 passed Winchfield at 09.34 (photo at end)
 70802 passed Winchfield at 09.34 on Eastleigh – Hoo Jnct light engine (photo at end)
 De-branded ATW 150208 was seen at Llanelli at 07.50 on 2V04 Llandovery – Swansea (Chris Addoo)



July 27

73952 + 73951 approaches Wellingborough at 13.32 on Ashford Up Sidings - Derby RTC (Colin Pottle)



July 28

56096 + 70812 passed Doncaster at 11.49 (Michael Turnidge)



July 31

66176 passed stabled 66121 at Didcot Parkway at 12.33 on Whatley Quarry - Churchward sidings loaded ballast service (Martin Evans)



800303 passed Camden Road at 14.41 on 5X81 13.59 North Pole - Doncaster Carr (photo at end)
 60002 passed Crouch Hill at 11.51 on 6L44 21.20 Oxwellmains to West Thurrock Crouch, a sight that will be history soon with the CI.60s transferring to GBRf (Colin James)



August 1

37612 t&t 37421 were seen at Edinburgh Waverley at 17.43 with the 05.35 Carlisle - Mossend Down Yard test train The route was via Kilmarnock, Barassie Jnct to Ayr then back via Kilmarnock and Dumfries and Carlisle and up the West Coast and round via Carstairs and the Cobbinshaw and down through Slateford & Portobello Jnct past Craigenlinny and in to Plat 4 at Edinburgh. It then departed back round Via Portobello Jnct and Slateford and down via Shotts and in to Mossend Yard



70814 passed Edinburgh Waverley at 17.34 on 6E45 08.07 Fort William Alcan - North Blyth Alcan, one of the few freights to go through the station (Iain Gardiner)



70002, one of those previously stored at LD, passed Tufts Crossing, March at 10.51 on 4M81 08.01 Felixstowe to Crewe, March (Colin James)



August 2

68034 + 68004 passed Walsall at 15.25 running 1½ hours early on Bridgwater – Crewe flasks (David Williams)



40145 + 40106 passed Walsall at 12.09 en route from ELR to SVR (David Williams)



News from Norfolk (Stuart Moore):

During June and July the NC37 short set has been powered as follows:

05/06	37419/425
11/06	37405/425
21/06	37407/425
28/06	37407/409 (Note 1)
05/07 (am)	37405/407 (Note 2)
05/07 (pm)	37405/409
13/07	37405/419
23/07	37409/419

Notes:

1 The first top and tailed large logo blue 37s so far. While there has been an occasion of two large logo 37s in Norwich together in 2017 they never operated the short set together.



above 37409 t&t 37407 on the 10.41 Gt Yarmouth - Norwich summer special, Acle, 30th June 2018 (Stuart Moore)

2 There appears to have been an issue or misunderstanding on 5th July when 37409 was removed from the short set to be replaced by 37405 and then reattached later to replace 37407 (see photo at end).

Other DRS news:

37038 has been present in Norwich pretty much constantly throughout. It did have a brief run to Crewe as part of an intended DVT move to Cardiff but in the end ran light. It has also occasionally run ecs moves to Bounds Green. It was also a guest loco at the North Norfolk gala which ran over the 15-17th June but only for the weekend.

57002 was present in Norwich at the start of June but took a DVT to Cardiff (a successful trip this time!) and stayed in Crewe.

On the 8th June 68001 + 68004 arrived in Norwich on an ecs move from Burton Wetmore to Norwich for the Saturday's NENTA railtour.



above 68004 t&t 68001 climbing Strumpshaw bank (17.43) 16th June 2018 (Stuart Moore)

However the big event of the month must have been the Great Yarmouth Air show over the 16 / 17th June. To cater for the travelling public, GA used two complete London Mk3 sets (incl DVTs)

t&t by 68001/004 and 68002/018. In addition on the Saturday the short set was running the Summer Saturday services to the coast. This gave us the long-missed sight of three loco hauled sets in operation over the Yarmouth lines on the Saturday and very rare two loco hauled sets on Sunday. It was almost like being back on a summer Saturday in the eighties again!



above 68018 t&t 68002 Brundall (16.07) 16th June 2018 (Toby Radziszewski)

The 68s departed for Crewe on the Monday but not before giving a mini DRS fest of 9 locos, 37038/405/407/419/425, 68001/002/004/018. A good way to start the working week!

The final visitor from DRS was 37423 which was noted in the yard on the 23rd July. It was not used during its visit and returned hauled by 37405 on the 30th July.

Away from DRS locos the 1Q18 monthly gauging train has made a reappearance having not run for a couple of months. Running on the third Thursday in each month it starts and finishes in Cambridge with two runs to Yarmouth and one to Lowestoft before heading to Ipswich. On both occasions it was operated by 37099 t&t 37254.



above 37099 in Acle in the rear of the 1Q18 Cambridge - Cambridge via the coast. The set sits in Acle for 10 minutes to wait for a Norwich to Gt Yarmouth passenger to pass giving plenty of time to get pictures, 19th July 2018

Only two Peak Forest stone trains have been observed. 66090 on the 2nd July and 66082 on the 30th July.

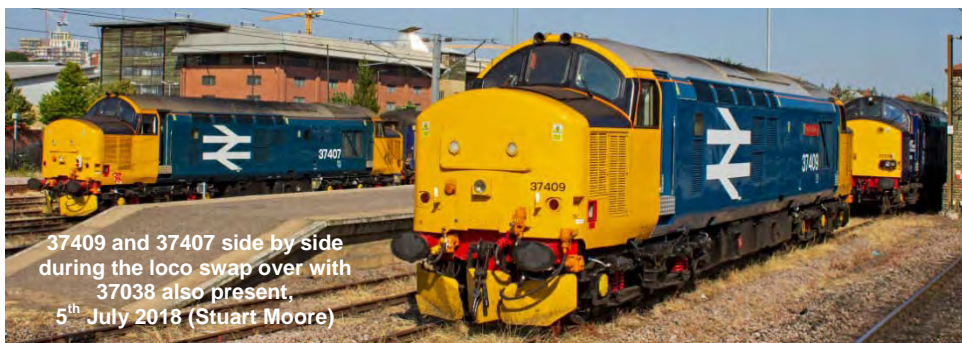
66709 was seen on the Harwich to North Walsham empty tanks on the 6th June.



left 08480 heading from Norwich yard to collect the failed 37405, 24th July 2018

08480 made two visits from NC to the yard next to Norwich station. On the 13th July it was seen collecting a failed 90003 and stock from the yard, while in the 24th July it was noted running light into the yard and then light out. It was heading on to the main line just outside Norwich station to collect 37405 which had failed hauling 5299 which was also a failed 90 and stock. The 37 was later seen in the yard where it remained until 30th July.

Finally EMU substitutions for loco hauled London trains have included 321350+321355 on the 16th and 18th June and 321360+321430 on the 18th July.



37409 and 37407 side by side during the loco swap over with 37038 also present, 5th July 2018 (Stuart Moore)



70802 Winchfield (09.34) 26th July 2018 (Derek Everson)



66789 with ex-DBC HTAs on the first service out of Ely Papworth Sidings, Ely West Jct (17.47) 5th June 2018 (Toby Radziszewski)

37601 approaches Wellingborough (11.41)
28th June 2018 (Colin Pottle)



800303 Camden Rd (14.41)
31st July 2018 (Colin James)



66727 Wellingborough with the LT 4-TC
stock (12.09) 19th June 2018 (Colin Pottle)



60007 + 66076 + 66169 + 66075 + 66167
Swindon (13.40) 14th July 2018 (Colin Pidgeon)





INFRASTRUCTURE NEWS

Aberdeen – Dyce Track Doubling by Trevor Roots:

Shortly after you read this in print the remodelled track east of Dyce should be re-opened on the 19th August. On the 7th July in conjunction with a hospital appointment for Chris in Aberdeen I was able to take another look at the works with track now being laid. It was also interesting to note that the track through the two easternmost tunnels, Schoolhill and that under Union Street is to remain single track as the bore of the former cannot now take redoubling. The majority of the activity was centred around Kittybrewster and the Waterloo branch junction with two works trains, one headed by 66504 with sleepers on YKAs and the other sting on the Waterloo branch top & tailed by 66526 & 66416 with MLA & JNA ballast wagons. There were three of the Kirow heavy duty KRC250UK cranes, half the fleet (copped two) on site with the newest DRK 81626 moving track panels and DRK 81623 assisting. DRK 81625 appeared to be out of action in the branch headshunt west of the junction.

above looking northeast from A947 tunnel portal along the only straight section of line towards Dyce

below looking southeast from the other end of the tunnel from Old Meldrum Road





above looking west from Don Street showing the embankment has been re-graded and the overhanging sheds removed but replaced by a row of uniform new ones

right looking north from St Machar Drive, Kittybrewster with DRK 81625 in the headshunt which will become the second track, you can just see new formation beyond the buffers, the view looking south towards the photo below has not included as nothing has changed yet



below looking north from A96 Powis Terrace, Kittybrestre, note the re-modelled Waterloo branch jnct alongside the new second track





above DRK 81623 + YWA 996135
looking north from St Machar Drive, Kittybrewster

left 66416 on the Waterloo branch
(to the right in the photo opposite bottom)

below DRK 81626 moving track panels with DRK 81623 on the right looking from the Council Depot road (on the left in the photo opposite bottom)





left the other side of the A96 Powis Terrace with 66504 looking south with two tracks in place, the next photo is from where the track bends to the left following Leslie Street (on the embankment to the left)

below looking south from Leslie Street towards Hutcheon Street Tunnel (280 yards) showing the limit of the track doubling with the single track remaining through the tunnel and onwards for ¾ mile into Aberdeen





left looking north from Hutcheon Street Tunnel portal showing the platform from the former station which closed in 1937

Though as stated the doubling stops north of Hutcheon Street Tunnel I thought for completeness it was worth showing the remaining run in to Aberdeen Station which is mostly in tunnels.



right after a short 200 yards in the open south of Hutcheon Street Tunnel (the south portal is under Maberley Street) the line dives under Woolmanhill Roundabout and into Schoolhill Tunnel (250 yards)

below the southern portal of Schoolhill Tunnel alongside Denburn Road with the site of Schoolhill Station on the left which was reached via a high level walkway from Rosemount Viaduct, from where the photo is taken





left looking north from Union Terrace Gardens under Rosemount Viaduct to Schoolhill Tunnel with the bufferstop of the disused Aberdeen North Siding to the left of the single track running line

below looking south from the same spot as left with both tracks and Denburn Road passing under Trinity Shopping Centre, the line bearing round slightly to the right

I suppose there has been no traffic for 2 months but it hardly looks like the approach of an intercity mainline into a major cityjust crying out for an HST to burst out of the tunnels, not long now and definitely found a few more interesting photo locations.



Misc News:

The ECML and diversionary routes have been checked for the introduction of IETs later in 2018 with all structures gauge cleared.

Work started on the new Stadler facility at Kirkdale on the 17th May 2018. The new Depot will house the forthcoming Cl.777 EMUs due to arrive in 2019.

A new escalator came into use in early August 2018 from the concourse to the overhead walkway after being moved for the platform 12 extension at Edinburgh Waverley.

The ScotRail route between Greenhill, Larbert and Polmont Jncts including Falkirk, Grahamston and Camelon stations has been electrified. Work is ongoing on the Glasgow Central to Edinburgh line via Shotts as can be seen in the photo below showing the remains of Breich station during its demolition, 3rd July 2018 (Iain Gardiner). The station is to be rebuilt to a modern standard during electrification of the. There were two platforms with a small wooden shelter on each, looking like they were dated from when the station was built, and held about 8 people in each shelter. The old platforms were gravel and very uneven. Platform 2 to Edinburgh had a 6 inch step up on to the train at the front end and an 18 inch step towards the rear of the train. That's how the level drops along the platform. The station only gets approx 27 passengers a year. *I nearly stopped to get a photo of Breich on a journey south earlier in the year which would have shown it intact, but didn't...drat, ed.*



The loop line through Trimley station is being extended westwards by 1.4km to increase capacity on the single line freight branch from Ipswich – Felixstowe Town and Port. The upgrade will allow up to 10 more freights to operate to and from the Port. Work started in April 2018 and will be complete over weekends until Autumn 2019 and will include upgrades to 3 of the 12 level crossings on the branch, though none of the 4 in the new loop section.



above 66953 at Kelpers Lane Crossing, just west of Trimley, on 12.23 Ipswich SS - Felixstowe North passing the site of the new Trimley loop, 11th May 2018 (Keith Partlow)

Derby Remodelling & Blockade:

In preparation for the Derby Blockade work has been undertaken at Barrow Hill where 3 tracks between the coaling stage and the Rampart Engineering shed have been re-laid as two with walkways and lighting. These are now known as the Meridian siding as they will hold two short Cl.222 Meridian DEMUs. The three sidings alongside Roundhouse Halt have also been tarted up and will hold two HSTs and a 7 car Cl.222 Meridian. The sidings were handed over to EMT on the 29th July.



*above re-laid HNRC sidings adjacent coal stage
with 20301 + 20304 + 20309 + 20308 + 20312 + 20305 + 20303 temporarily stored
below sidings cleared and ballasted adjacent Roundhouse Halt, Barrow Hill 10th July 2018*



With the blockade now in place to change the track layout and signalling the following photos taken prior to that show the new platform well under construction as taken by Martin Hall on the 8th July 2018 (opposite top) and on the right of the photo below taken from London Road bridge on the 16th July 2018.





above left & right middle
the demolition in front of
the Glasgow Queen
Street station has
opened up the entire
frontage along West
George Street / George
Square and brought
the glass frontage into
full view,
23rd June 2018
(Iain Gardiner)

left
track renewal around
Crawley with 66101
(showing Goffs Park
footbridge) from the A23
Crawley (15.20)
28th April 2018
(John Brace)

RAIL TOUR PHOTO SPOT



above 37516 + 37667 sit at York awaiting to return the Scarborough Spa Express to Carnforth (David Rice)

left 4-6-2 35018 'BRITISH INDIA LINE' seen at York at 17.00 on the return Scarborough Spa Express. This runs every fortnight under steam from York to Scarborough and return to York then Cl.37 diesels continue back to Carnforth (see above). The service runs weekly during the summer with diesels as traction the other weeks (Paul Baker)

below a pair of 09s...4-6-2 60009 'UNION OF SOUTH AFRICA' + 66009 passing Pinchbeck on the RAF 100 tour from Lincoln to London and return (08.18) 10th July 2018 (Gervase Orton)





a new tour operator, Locomotive Services Ltd has begun running under the banner of Saphos Trains with the inaugural service on the 14th April 2018 with D1944 & 4-6-0 46100 'Royal Scot' shown here on training run, Gobowen (11.10) 5th June 2018 (Martin Evans)



4-6-2 60103 on the 'The Scarborough Flyer' passes Abbots Ripton at 12.27, 23rd June 2018 (Toby Radziszewski)



above after performing on the Sunny South Express 73961 + 73963 depart Peterborough at 13.13 returning stock to Eastleigh, 15th July 2018 (Toby Radziszewski)



above 67024 t&t 67021 passed Swindon at 11.50 on 1Z95 Victoria – Worcester Belmond Pullman 7th July 2018 (Colin Pidgeon)



37669 t&t 47580 on 1Z61 09.17 Highbury & Islington to Sizewell, Ingatstone 10.26) 15th April 2018 (Colin James)

NARROW GAUGE PHOTO SPOT



above 0-4-0 Hunslet 9 'ALF' & Baguley Drewry 12 'ST CADFAN'
Tywyn Pendre Works, TLY 19th June 2018 (Martin Evans)

OUT & ABOUT

by James Holloway

*For clarity, steam locos are now shown in red. To be more helpful for those interested in where stock was exactly, can I ask all contributors who list trip sightings over long distances, to please add all locations when submitting to James. Please also ensure your sightings reach James a few days before the press deadline, see **SOCIETY NOTICE BOARD**...ed*

Mike Rumens:

5th June: Nuneaton:

66047, 66539, 70815, 86622/38, 90018/40, 350123, 350257

11th June: Nuneaton:

66512/23, 66784, 70802/08, 90018/40, 350109/28

12th June: Nuneaton: 66537/39/51, 66784, 70805, 221104

221110, 350126, 350241, DR73923

14th June: Nuneaton: 66560, 350253, DR73923

18th June: Nuneaton: 37419, 66095, 66562, 66701, 68001

68002/04/18, 90018/40, 350109/28, DR73936

19th June: Nuneaton: 66095, 66516/25/64, 66701, 90018

90040, 350123, 350376, DR73936

21st June: Nuneaton: 37218, 47580, 47714, 66097, 66118

66558/60, 90028/40, 350368

Sean Davies:

2nd June: Worcester Shrub Hill: 43015/153, 66065, 153364

153371, 165122, 170508/15, 172213/331, 800023

Cheltenham Spa: 150263, 166210, 220006

Bristol Parkway: 66413/515/568/591/952

Filton Abbey Wood: 158952

Stapleton Road: 166219

Bristol Temple Meads:

37175, 43020/029/070/086/131/136/171/175/207/285

150002, 150232/38/43/48/61, 158955, 159016, 166202/07

166208/09/19, 221120/38/40, 800006/14/19/24/27/29

15th June: Newton Abbot:

43009/182/187/198, 150219/49, 220002, 221129

Laira Plymouth: 08644, 43170/189

Plymouth: 43029/097/185, 150247, 221141, 802001/02

Totnes: 220034

Exeter St David's:

43041/078/133/151/181/207/321/357, 143603/17/18/20

150239/46, 153329/61/69/77/82, 159020

17th June: Okehampton: 08937, 31452, 150233

Exeter St David's: 43070/078, 143603/17/18/20, 150246

150263, 159002/12, 159101/02/06/08, 221120

28th June: Worcester Shrub Hill: 43153/185, 150105

B'ham New Street: 170512, 350239, 390115

B'ham Int: 158828/30, 350103

Coventry:

66060, 153354, 221105/20/22, 350115, 350375, 390016

Nuneaton: 37884, 66100/118/152/418/533/539/547/548

66561/564/569/570/587/707/719/720/740/769/786, 70014

70814, 86605, 90018/37, 170104/05/09/12/16, 170397

170521, 170636/39, 221103/07/15, 345038, 350102/04

350110/13/18/22/27, 350263/372, 390010/16/39/44/45/46

390112/14/15/17/18/25/27/32/34/52/55, DR73936, DR98008

King's Norton: DR98008/10/60

Ian Bain:

2nd June: Partick 11.50-13.20:

318251-54/56-60/63-65/67-70, 320301/05-08/10-12/17/19

320321, 321411/13/14/16, 334003/09/11-15/18/19/21/22/26

334027/29/30/32/33/37/39/40

James Holloway:

22nd June: Bescot 11.50-13.40:

60040, 66056, 66152/83, 67018, 88004, 153356/64/66

170501/08/13/16, 350104, 350235/54, 350368, cs 6376-79

John Talbot:

11th June: Nottingham: 43073/76, 60063, 153302/10/13/21

153379/83, 156401/03/98, 158773/80/83/85/88, 158806/54

158866/909/910, 170520/23, 222015-017/020/023, 222103

12th June: Nottingham:

43052/59/66/73/82/89, 43468, 60062/63, 153302/08/19/79

153381/83-85, 156401/03/06/08/11/14/15/70/98, 158774

158780/83/99, 158813/16/57/58/64/65/70, 158909, 170103

170106/12/13, 170519/23, 170636/37, 222005/07/16/18/20

13th June: Nottingham: 43052/59, 66136, 153308/79

156408, 158854/59, 170104/15, 222015

Michael Hayman:

16th June: King's Cross:

43206/74/90, D9009, 66127, 67004, 91127

London Victoria: 67021/24

24th June: Acton: 66009/17, 66104/29/45

Ealing Broadway: 60103, 47804

Tony Fawcett:

26th June: Nottingham trams in service

& at depot 17.00-18.40: 201/03/04/07-24/26-37

David Robinson:

6th June: Durham:

91122/28, 156482, 185105/32/44, 220013

Darlington: 142070/91, 185104

York: 35018, 09017, 66604, 66770, 88006, 142087, 144007

155343, 185122

Doncaster:

08724, 66079, 66122/85, 66422, 66548, 66730/56/74/78

67027, 88001, 91120, 150137, 180110, 322482/83

Newark: 90039

Grantham: 153383, 156411

Peterborough:

66221, 66721/22/28/77, 91116/30, 153302, 170116, 170202

365504/06/31/34/41, 387107/15, 700009, 700122

Welwyn Garden City: 700006/15, 700115

Brookman's Park: 313027/55
Hornsey: 91125, 313134, 700019, 700114/33, 950001
King's Cross:
 43061, 43257/99, 43318, 90019, 91103/05/24, 180104/12
 365524/36, 387107/13/17/21/25, 700023/25/41
St Pancras: 373214/16/18, 374009, 395013/22/28
Stratford: 66080, 90013, 315828/38, 317338, 321349
 321407/08/47, 345006, 360106, 378205/13/27



66080 (12.45)

Ilford: 08700, 345005/08
Romford: 66505, 90007, 315808/24/38/41/42/46, 321438
Upminster: 357029, 357206/10
Grays: 357002/31, 357325
Dagenham: 66139, 66606/07/13, 70806, 90028
Barking: 66515, 172003/05, 357041/44, 357204, 357314
East Ham: 357007/12/30/37/42, 357203
Woolwich Arsenal: 376005, 465011, 466010/40
Woolwich Dockyard: 465040, 465153/84
Charlton: 465004/18, 465186
Blackheath: 376026/34
Lewisham: 66096, 66744, 66848, 465006/13/17/30/42
 465159/67/70, 466012
St John's:
 375620, 375712/14, 375807, 376004/05/08/16/19/28/33/36
 465003/11/20/29/41, 465154/78/82/84, 465236/38/50,
 465907/08/11/15/24, 466001/08/10/28/30/34/40
New Cross: 375619, 378136, 465168/69/80/81/89, 465247
London Bridge:
 375620, 375714, 375801, 376004/28, 455839, 465021/34
 465046, 465154/76, 465240, 466004/26, 700145
London Charing Cross:
 375619, 375806, 375921/24, 376014/19/27/36, 465183
 465249, 465925/28, 466018/20/25
Waterloo East: 375608/17, 375706, 375806/28
London Waterloo: 159013, 444018/21, 450004/17, 450124
 450543/48/55, 455723/29/50, 455842, 455901/07/20
 456011/19, 707005/12/20
Vauxhall: 444006/21/29, 450550, 455729/35/39, 455849
 455906/20, 456020/26, 707015/21/22/27

Clapham Jct: 158884, 159001/02/05/10/13/16/20
 159102/07/08, 377104/09-11/19/30/32/36/39/41/48-50/54
 377158/59/61, 377204, 377302/06/13/15/17/19/27/42
 377402/05/08/14/15/17/28/30-34/36/40/41/47/49/50/52/55
 377461/63-65, 377607/09/10/15/23/24/26, 378135/43/46/53
 378204/10/21/27, 387201/09-11/13/14/16-18/21/22/24-26
 444001-03/10/13/14/20/24/28/29/31/34, 450001/02/10/11
 450013-15/18/20/23/27/28/32072175/80/82/84/85/87-89/93
 450094/95/98, 450101-03/05/09/11/13/15-19/21/22/26/27
 450543-45/50/52/56/57/60/64/65/70, 455701-03/05/10/12/13
 455715/17/19/26/27/31-33/37/39-41, 455803/06/12/14/18
 455825/28/43/44/49/51/58/61/64/67/69-71/74, 455901/04
 455905-09/14/15/17, 456003/09/10/12/15-16/18/20/21
 458502/04-06/09/12/15/16/19-21/24/26/27/32/33, 707002
 707003/04/07/09-13/16/17/19-21/25-29
Willesden Jct: D3671, 66089, 92022/32/33, 350107/12
 350120/26, 378206/14/19/25/31
Euston: 221107/10, 350250, 350369, 390112
Oakleigh Park: 313027/45, 313134, 700006/41

Alan Jones:

4th June: Carlisle:
 57308, 153328, 156465, 221118, 390045, 390152
Toton 14.00: 60003/08/11/12/33-35/40/43/45/48/50/58/59
 60061/68/75/77/79/88/90/92, 60100, 66001/21/59/66/97/98
 66102/04/13/14/17/25/43/48/65/88, 66617, 66762/79, 66849
 67019
5th June: Cheltenham: 158952
Stroud: 43136/160
Swindon: 59103, 66952, 800015/26, 166216
Didcot 12.00-13.00: 43024/028/030/035/040/063/144/172
 43175/176/196, 66009/40, 66087, 66545/50, 165108/14/16
 387134/43/50/58/71/74, 800005/10/11/16/19/20/30/35
Reading 13.30-16.00:
60163, 08836, 43009/18/22/23/25/29/34/36/42/71/79/91/94
 43133/37/39/44/47/54/56/59-61/64/65/74/85/88/93, 47760
 57306, 57602, 59004, 59104, 59202, 66053/096, 66506
 165105/07/13/23/28/35-37, 166217, 220014/15/23/24,
 221120/28/38, 387130/31/36/40-42/44/46-48/52-54/59/61
 387163/65/67, 458517/26/29, 800006/08/12/13/15/17/22/26
 800027-29/31/32
6th June: Bescot 09.00-09.30:
 66009/117/144, 67012, 153366, 170502/06, 350236, 390138
B'ham New Street: 153364, 170106/15, 170398, 170515
 170516, 170635, 221133/35, 323204/05/09/14/16/17
 350107/08/19, 350236/43/61, 350376, 390005/016
B'ham Moor Street: 172214/21, 172341
Tyseley 10.15-11.15: 66603, 68010, 70007, 150107
 168005, 168323/26, 170117, 170513/14/22, 170631
 172211/15-18/22, 172335/38/40/45, 220013
B'ham Snow Hill 11.30-12.00:
 168108, 168218, 172212/20, 172332-34/36/37
Carlisle Kingmoor 18.00:
 37403, 57308, 66303/04, 66421/29, 88009
7th June: Inverkeithing: 158738, 170473
Haymarket:
 43036/037, 43135, 156477, 158714/86, 170409/71, 334024
Edinburgh: 90016, 91131, 92014, 158701/39/68, 170395

170402/58, 334001/07/24/25/30, 380005/13, 380111
Craigentinny:
 08472, 08596, 43272, 47727, 73966/70/71, cs 6346/93/94
Newcastle 09.40/13.00-13.45: 67014, 91101/02/15, 142026
 156420/79-81/91, 185102/16, 220009
Pelaw 10.55-13.00: 66748, 142064, 156502
 trams 4002-04/09-13/16-18/20/24/25/27/29/30/33/34/36-39
 4041/44/46/4048/49/51/52/56/60/63/65-67/69/70/73/77-81
 4083/84/87/90
9th June: Inverness 10.45: 08523, 68007, 73966-69,
 158706/08/11/15, 170403, cs 1730/1859/3096/3115/3150
 4831/5028/6705/9802/10504/10520/10719/13229/35185



73967 + 73966 SRPS railtour Paisley Gilmour St - Kyle of
 Lochalsh (11.02)

12th June: Elgin: 158722, 170431
Inverness: 08523, 67030, 158708/13/20/24, 170413
 800201/02, cs 1220, 9815, 10501/19/42/43, 10650/90
Kingussie: 170407/15
Dunkeld: DR98911/61
Perth: 158706
Ladybank: 170434
Kingholm: 170401
Edinburgh Gateway: 158867, 170418
Haymarket: 158704, 170470, 350404, 390107
Edinburgh Waverley 12.30/13.30-15.30:
 43208, 91110/11/30, 156430/31, 158702/03/06/29/33-35/41
 158789/869, 170396, 170401/09/10/14/17/18/25/30/33/52/55
 334001/03/05-07/13/15/18/19/23/26/28/31/36/40, 350401
 350406, 380005/13, 380106/08/09/12/14, 385015, 385123
 390042 trams 251/54/60-63/65/68/69
Craigentinny: 08596, 43290, 43303, 66737, 73966/67/69
Berwick: DR73111/905
Newcastle: 43299, 43318, 156420/75, 220028
York: 43295, 66546, 144020, 185110
Doncaster: 66422/32, 91115/29, 142050, 144013, 180112
 185136, 322482
13th June: Doncaster: 08669, 43061/64/75, 43290/96/99
 43302/07/15/18, 66079/138, 66422/432, 66524/566/592
 88006, 90019, 91102/03/05/08/13/15-17/21/25-27/30/31
 142032/33/94, 144003/07/11/12, 150102/14, 153383
 158793, 158844/55/72, 158906/10, 180101/09/11/14/19
 185120/36, 220009/18/23/26, 321448, 321901/902, 322485
 DR74002/75401/75404
Scunthorpe: 60054, 66105, 66778
Barnetby 09.20-11.50: 60047/76, 66040, 66150/56/64

66532/71, 66784, 70811, 153302/13, 185119/32/35/48
Meadowhall: 144012/14, 158904
Sheffield 13.45-16.25: 43066, 142018/19/26/37/42/50
 144013/21/23, 150131, 150201, 158770/77/91/94/97
 158844/46/49/53/59/65, 158909, 185120/36, 220003/07
 220009/15/21/34, 222002/003/011/016/017
 trams 399201/06, 101-04/08-12/14/15/18/20-24
14th June: Doncaster 08.00-09.10: 08669, 43141, 43206
 43290, 66130, 66422/32, 91102/11/16/20/27/31, 142018
 144009/17, 158816, 158910, 180101/06/09, 185103/22
 220029, 221140, 321448, 322484/85
York: 185112, 220006, 221136, DR75303/405
Tyne Yard: 66528
Newcastle: 67014, 156481, 185115
Craigentinny: 08472, 47727, 66702/37, 73968
Edinburgh Waverley 12.15-13.30:
 91113/28, 156430, 158702/22/33/36, 170393/94/96, 170402
 170420/26/28/34/72, 334016, 380020/021, 380108
Haymarket: 43037, 170403/09/31/74
Perth 16.30-18.15:
 66069/077, 66736, 158703/34, 170411/16/33
Inverness: 08523, 43315, 67030, 158708/09
26th June: Newtonmore 12.00: 66303/04
Elgin 15.00: 170453

Paul Rosser:

21st June: Stockport 06.15: 57313/14, 185112, 390045
Earles Sidings 06.34: 66522/89, 66602
Sheffield 07.10: 142039, 144008/12, 153351, 158784
 158851, 158906, 221141
Doncaster 07.35-08.15: 43028/61/75, 66432, 66701/41/79
 88006, 91106/08/12/15/21, 220010, DR79404
Peterborough 09.14-09.35:
 91104/10/25, 180101/05, 365536/39, 700111/32
Stevenage 10.30-10.45:
 66007, 91102, 387111/18/25, 700028
Welwyn Garden City 10.58: DR73936
Finsbury Park 11.10: 313049, 700034/39/41, 700118/36
Cricklewood 13.08: 66703, 700037
Leicester 14.07: 66771
Derby 14.35: 08536, 31105, 37424, 73138
12th July: Stockport 06.00-06.25: 142030/44/46, 150111
 156489, 185126, 220019, 319367, 390005/13, 390132
Earles Sidings 06.50: 66614/21
Sheffield 07.10: 150273, 185126/35/39
Doncaster 07.35-08.15:
 43169, 43310/20, 67004/12, 91103/04/16/29, 142026/70
 158815, 158908, 185112, 221136, 321902, DR98008
York 08.40: 35018, 37401, 66554, 91104, 221138
Darlington 09.10: 66764, DR97504/604/804
Newcastle 09.47: 67014, 156496, 185145, 220013
Berwick-upon-Tweed 10.28: DR73116/77906
Dunbar 10.54: 70816, 380105
Edinburgh Waverley 12.15-12.52:
 08472, 43208, 43308, 220008/23, 334006/17/25/31, 380114
Carlisle Kingmoor Yard 14.02:
 66067, 66424, 70812, ADB965320/578/579
Carlisle DRS 14.04: 37403, 88009/10

Carlisle 14.08: 153360, 156506, 158816, DR73111/77903
Penrith 14.23: DR73922
Preston 15.15: 156427, 390135
Warrington Bank Quay 15.40: 60062, 66023
Crewe 16.00-16.12: 175107, 390127/29/35

Geoff Hope:

5th June: St Pancras 11.55-12.50: 222005/11/12
373213/14, 374019/20/24/25, 700001/08/13/16/27/30/34
700037/45/51, 700115/17/23/26/30/34/46
Blackfriars 12.50-15.00:
700002/16/17/27/30/33/37/38/43/44/46-49/51-53/56, 700101
700102/06/08/15/19/21/22/26/30/35/37-40/42-44/46/53

Bethnal Green 15.40-18.45:

90001/03-05/08/10/11/14, 315801-05/07/09-11/13-20/22-26
315828-30/37-39/41-47/51/53/54/56/57, 317339-41/46/48
317503/05-09/12-14, 317649/52/54-58/60/62-65/67/69/71
317708-10/14/19/23/29/32, 317882/87/88/90/92, 321301
321302/05/06/10/13/14/22/25-37/39-52/54/55/57-66
321402/05-08/18-30/32/34/35/37-44/46/47, 345003/05/06
345009-12/22, 360101/02/04-06/08/10-20, 379001/03-06
379008-16/18-30, DVT's 82103/07/14/18/33/36
Crewe 21.20: 68020, 345037

13th June: St Pancras 11.55-13.20:

43047/50/52/54/59/60, 66771, 222003/09/11/13, 373221
373222/29/30, 374013/14/23/24, 700004/05/12/14/17/21
700022/33/43-45/50/51/55, 700111/14/31/39/52
Blackfriars 13.20-15.10: 700003-05/07/10/12/14/17/21
700022/32/33/36/38/43/44/47/48/52/58, 700103/08/11
700113/16/21/25/35/37-39/43/52/53

Clapham Jct 15.50-18.50:

66145, 159001/06-08/12/19-22
159103/06/07, 377102/03, 377105-07/11/13-16/19-21/27
377128/29/32-35/37/38/40/43/45-49/54/55/60-62, 377202
377203/04/06/09/14/16, 377301/06-09/11/15/16/18/19/23
377324/27, 377402/04-06/08/09/11/14-18/21/23, 377426
377427-29/32/33/36/38/41/43/46/49/50/53/55-60/62/63/65
377469-75, 377603/05-07/09-13/15/16/18-20/22-24/26
377705-07, 378138/43/47/50, 378202/16/25/26/31, 387201
387202-05/07/08/11-21/24-27, 444001/03/05/08/10-12/15
444016/18/21-23/25/29-32/34-38/41/45, 450002/04/06-08
450013/14/16-20/22-24/26-28/30/33-37/39-42/72/75-82/84
450085/87-90/94-96, 450101-04/06-12/14-21/23/25-27
450544-53/55-57/59-63/65-67/69/70, 455701/03-12/14/16
455717-34/36-40/42/50, 455802/05/10/11/28/31/33/34/36
455841/49-53/55/58-63/66-69/74, 455901-08/10/11/13-20
456001/02/04-08/10-12/14-18/20/21/23/24, 458501-03/05
45806-08/10-19/21-24/26/28-32, 707001-05/07-10/12-14
707017-26/28-30

20th June: Marylebone 12.05-13.35:

68014, 165001/03-05/08/12/14/16/17/19-21/23/25/28/34
165037-39, 168106/08/12, 168214/16/18/19, 168323-26/29

Ian McAlpine:

1st June: Peterborough:
43061/75, 66722/55/61/64/68/89,
90019, 700113, DR77801
Grantham: DR80214
Doncaster: 66434, 66726/52/77

88001, DR79401-04
Leeds: 43277, 43367, 150101/29/44
150215, 185127
Mirfield: 150118
Manchester Victoria: 150206
185131, tram 3073/77/78/91/95, 3104

172101, cs 10272/12602/613/615/620/623
Paddington 13.50-15.50: 43002/05/10/22/23/27/42/53/56
43069/94/97, 43125/29/31/44/54/55/61/64/72/74/88/92/96
43197, 165103-06, 332001/04/06-08/10/12/13, 345013/17
360201/02/04, 387132/33/37/40/42/47/52/53/57/61/63/65
387170/72, 800006/09/13/16/17/21/24/26/32, 800304
Bethnal Green 16.40-18.40: 90003/05/08/10/11/13
315801-07/09/10/12/13/15-22/24/34/36-38/41-48/52-54
315856/57/59, 317337-39/41-46, 317501/02/05/06/08/11-15
317652/54-57/59/65/67/71, 317708-10/14/19/23/32, 317882
317883/85/87/89-92, 321303-05/07/09/10/12-15/21/22/25
321326/28-35/37-40/42-44/46-52/54-56/58-63/66, 321402
321403/05-08/10/18-22/24-28/31-38/40/42-45/47, 345003/05
345007/08/11/12, 360103/04/06/08-11/13/15-17/21, 379001
379003-09/11-14/16-23/25-28/30, DVT's 82102/03/18/33/42
82152

Brian Bentley:

6th June: Hurst Green: 700047, 700121
Clapham High Street: 465913
Denmark Hill: 66089, 70815, 375306, 375701/04/08
377512/18, 465002/19, 700005/13/17/49/52
Blackfriars: 700002/05/16/44, 700141
Wandsworth Road: 59004, 66192, 66716, 375705, 377163
377501/10/13, 465006/12/30/33, 465159/90/93, 465242
465905/16/33, 466021/27
South Croydon: 59206
13th June: Hurst Green: 700020, 700101
East Croydon: 700139
Sutton: 700004/43
London Bridge: 375603/10/17/24, 375706/13, 375807/14
375821, 375904/09, 376003/12/13/22/26, 465003/11/14-16
465018/19/23/24/27/28/31/36/45/50, 465152/54/61/64/69/73
465177/80/81/94/96, 465236/38/39/42/47, 465902/03/07
465915/20/24, 466004/08/25/26/28/31/32/40-42, 700003
700103/08/13/21/31/37-39/43/53
East Croydon: 700042, 700111/16/25/35/48
27th June: Hurst Green: 700013, 700153
East Croydon 09.42-10.26: 700040, 700101/11/14/18/31
Blackfriars 10.51-12.50: 375610, 700002/07/10/13/14/19
700021/22/24/29/30/32/33/43/44/46-49/51/54/55/58,
700101/11-14/16/19/23/25/29/31/32/34/40/43/47
London Bridge 12.55-14.21: 375606/07/19, 375705/06/08
375806/17/25/27/29, 375907/14/16/18, 376005/06/08/10
376016/19/22/23/28/32/33/36, 465002-04/07/09/10/12/14
465016-18/20/28/30/32/41-45/47/49/50, 465152/54/57/63
465166/69/71/72/74/76/78/79/82-84/86/90/92/94
465239-41/43/45/47-49, 465901/07-09/14/16/20/22/24/34
466009/10/17/21-23/27/29/33/35/36/39, 700013/17/30/37
700101/03/07/13/18/19/23/25/31/32/34/40/43

Edge Hill: 66741
Liverpool Lime Street:
507013/25, 508134
3rd June: Huyton: 319367, 319424
Earlestown: 319369
Miles Platting Jct: 09009

8th June: Peterborough:
 66505, 170104, 700009, 700135
 DR77801, DR928001
March: 66768
Ely: DR73912
Cambridge: 170105, 387105/06/26
 700023, 700133/46
9th June: Peterborough: 68001/04
 387116/27
Biggleswade: 66221, 700026
Stevenage: 700004
Welwyn Garden City: 700006/28
Ferne Park: 66773
King's Cross: 67028, 387105/23/26
 387128, 700034/35
Liverpool Street: 315809/49, 321337
 321442, 345005, 360103, 379013
Bounds Green: 08441
16th June: Peterborough: 387105/14
Biggleswade: 66221
Stevenage: 387126
Ferne Park: 66773
King's Cross:
 67004, 365508/32, 700011/41
St Pancras: 700044/46/48, 700104/23
City Thameslink: 700113
Blackfriars:
 375601, 375815, 700029/55
London Bridge: 376016, 465167/90
 466024, 700126/47
New Cross Gate: 378140
Penge West: 378154
Selhurst Depot: 377523
East Croydon: 377122, 377421/26/48
 387221, 700125/48, DR73919
Gatwick Airport: 387205/14/20/22
 700109/23/29/44
Three Bridges: 377472, 700016/21
 700059, 700102/09/33-35/43
Hassocks: 700145
Preston Park: 700120/53
Lovers Walk Depot: 313206
Brighton:
 377607/16, 387216/18/26, 700150
Haywards Heath: 700143
Purley: 66569
South Croydon: 700147
Hornsey Depot: 70010
22nd June: Peterborough:
 91113, DVT 82221
Welham Green: 700015
King's Cross: 700028/34, 700137
Waterloo: 458504/05/09/14/21/22/26
 458531/32, 707002/04/05/09/11/13/16
 707019/21/23/25/26/29
Vauxhall: 458502/13/14/21/35
 700001, 707029
Queenstown Road:

458506/19/32, 707005/07/11/13/21
Clapham Jct: 378146, 378232
 387225/27, 458516, 707002
Putney: 458506/19, 707014
Barnes: 458506/19/23, 707022/27
Barnes Bridge: 707013
Brentford: 458535, 707029
Hounslow: 707019
Whitton: 707004/05/17
Richmond: 707021
Mortlake: 707002/07/14/26
Putney: 458517, 707001/17/20
Wandsworth Town: 707006/14/22
Wandsworth Jct: 707014
Chiswick: 707010
Twickenham: 458530
North Sheen: 458508
Finsbury Park: 700140
Hornsey Depot: 700019, 700110/12
New Barnet: 700041
Hitchin: 700001
Arlesey: 700103
Huntingdon: 66007
25th June: King's Dyke: 37409
29th June: Peterborough:
 66003, 66725/44/69, 90036, 700105
Doncaster: 37175, 37254, 66170
 66431, 66951
Salford Central: 66782, 150123
Edge Hill: 66735
Liverpool Lime Street:
 507007/10/14/32
30th June: Chester: 67022, 150254
 158839, DVT 82308, DR73914
Conwy: 150229/84

Dennis Dey:

1st June: Burgess Hill: 700153
Three Bridges: 700003/12/34/38
 700101/03/07/09/21/23/53
Crawley Yard: 66724
Gatwick 09.25-09.35:
 700107/15/23/47/53
Liverpool Street: 345003/12
Ilford: 08700, 08871, 345005
Stratford 11.20-11.30:
 66080/84, 86637/39, 345008/10/11
London Bridge: 700117/51
2nd June: Hassocks:
 700030, 700123/30/45/53
Three Bridges: 700022/38/40/58
 700105/07/09/32/39/42/46/48/55
Wivelsfield: 700138
6th June: Hassocks: 700101
Haywards Heath: 700137
Three Bridges: 700010, 700104/08
 700109/12/17/18/25/28/47
Gatwick: 700010/11, 700102/25/32/52

Clapham Jct: 707007/08/16/23/29
Purley: 700121/55
8th June: Three Bridges: 700030/60
 700102-04/09/15/19/21/37/39
Crawley Yard: 66724
Gatwick: 700101/36/37/41
East Croydon: 700102/48/55
Clapham Jct: 707012/17/24
Purley: 700123
Earlswood: 700027
Haywards Heath: 700142
9th June: Hassocks: 700123/31
Haywards Heath: 700121
Three Bridges: 700030/55/60, 700115
 700117/18/37/43/45
13th June: Three Bridges:
 700003/05/15/60, 700105/07/11/20/21
 700026/27/32/40/47/48
Gatwick: 700002/03, 700111/25/39/43
Clapham Jct: 707016/28
London Bridge: 700027
15th June: Hassocks: 700118/33
Three Bridges: 700003/56/59
 700105/15/19/32/33/39/43/47-49/51
Crawley Yard: 66724
Gatwick: 700104/09/15/19/40/44/45
East Croydon: 700143
Paddington:
 345015, 800006/09/22/26/35
North Pole: 800003, 800304/05
Acton: 59001, 59102/203/204, 66009
 66085/93, 66142/182/563/604/712/771
 387133/45/49/50/53/54/56/64, 345014
 345015, 800008/10/13/19/21/27/31/32
West Ealing siding:
 387134/58/60/63/66/70/74
Southall: 37685, 47746, 66014/80,
 387165/68/69/72
Haywards Heath: 700129
16th June: Hassocks: 700143/47
Three Bridges: 66847, 700016/21/59
 700101/02/23/25/27/35/51
19th June: Hassocks: 700143
Preston Park: 700115
Lovers Walk: 700032, 700144/49
20th June: Hassocks: 700136
Three Bridges: 700002/51, 700114
 700131/32/35/37/43/47/48/52/54
Gatwick: 700010/27, 700116/30/39
East Croydon: 700148
Haywards Heath: 700112
Hassocks: 700134
22nd June: Three Bridges:
 700002/04/17/27/30/49/60, 700103/04
 700113/19/30/35/36/48/51
Crawley Yard: 66724
Gatwick: 700017/42, 700101/15/31/48
East Croydon: 700104

St Pancras: 373214/15/22/23/29/30
 374011/12/23/24/33/34
 Clapham Jct: 707022/27
 Haywards Heath: 700114
 Hassocks: 700134
 27th June: Hassocks: 700118
 Three Bridges: 700102/04/06/36
 700102/12/18/23/29/48/53
 Gatwick: 700016, 700111/12/31

East Croydon: 700101/52
 Haywards Heath: 700043
 29th June: Three Bridges: 700004
 700101/30/32/47/49/50
 Crawley Yard: 66724
 East Croydon: 700105/46
 Gatwick: 700037/45, 700112/14
 4th July: Hassocks: 700108/29/55
 Three Bridges: 700021, 700101/05

700108/11/14/19/25/32/40/47/49
 Gatwick:
 700021, 700104/25/30/41/52/53
 Clapham Jct: 707006/07/09/18/20
 Queenstown Road: 707023
 Vauxhall: 707017
 Waterloo: 707001/05/08/13/27
 Haywards Heath: 700142

Note: Apologies, July sightings which were submitted have been postponed as no room but, will appear with Aug sightings in the Sep issue. The problem of bi-monthly now to be solved.

SHUNTER SPOT



below 08499 Cardiff Canton
 6th April 2018 (Terry Lea)



PRESERVATION GALAS

This Gala was attended by Colin James & Paul Sumpter on different days with photos by both.

Gloucester Warwickshire Rly (GWR) Diesel Gala by Colin James:

The GWR held its Diesel Gala over the weekend of the 27th to 29th July. I visited the railway on the Sunday of the event. Unfortunately the weather forecast for the day was accurate, with wind and rain to start the day and some sunny spells in the afternoon, but the rain was never far away.

For the event there were 2 visiting locomotives, Warship D832 'Onslaught' (courtesy of the Bury Hydraulic Group) and Hymek D7017 (courtesy of the DEPG). These locomotives joined the home fleet of D8137, D5343, 37215 & D6948, 45149, 47376 'Freightliner 1995' & E6036 (Saturday only). Drewry 0-6-0 (Class 04 lookalike) 11230 was the Toddington yard shunter and D2182 (looking ex-works in BR Green) was the Winchcombe Carriage Works shunter.



D5343 on 14.55 Cheltenham Racecourse – Broadway, Toddington (15.53) 29th July 2018 (Colin James)

The Diesel Shed at Toddington was open to view locomotives under repair and also hosting a number of trade stands. Locomotives present were 5081 (bogie overhaul), 1693 (long term overhaul), D2280 (a recent arrival from the North Norfolk Railway, now under restoration, see below) & YEC 0-6-0 372 (wheel bearing replacement). Outside, in the yard, 2001 (20035) was still present, giving up its recoverable parts, before its inevitable scrapping (see right).

With the station at Broadway now open and the line being now 14 miles in length, a four train service was in use. This was with 3 rakes of 7 or 8 BR Mk1 carriages and the Cl. 117 DMU as hauled stock (on the Sunday, this was exclusively hauled by D8137). The uniform BR green look of the DMU has gone, with BR blue DMBS 51360 replacing 51405 in the 3 car set. The timetable worked very well, with no late running, the only locomotive swaps happening at Toddington.





As for Broadway, the Down platform is in use with an immaculate period looking station building setting the scene. The completed signal box, not in use is on the unfinished Up platform and a GWR type covered footbridge is being built to link the platforms. *see photos opposite in **STD PRESERVATION NEWS** ed.*

37215 running round its train at Broadway at 12.40 over the top of the B4632 Station Road (the oft struck bridge) and showing the new signals, 29th July 2018 (Colin James)



16933 & 5081 Toddington 27th July 2018 (Paul Sumpter)



above D8137, 2001, D6948 & 11230 below D832 & D7017, Toddington 27th July 2018
(Paul Sumpter)



GRUMPY GRICER CORNER

Following the Manchester Victoria photo incident I thought it is time for a new little light hearted section for the many members who wish to get a gripe off their chest or voice concerns over the modern railway organisation. Geoff Storey has probably put down on paper what many have muttered under their breath about station announcements.

I have spent some time on Reading station recently and have been getting more and more wound up by the continual stream of announcements. I decided to keep a record of announcements for about 20 minutes, with the following result (abbreviated description of announcement given):

- | | | | |
|-------|---|-------|-------------------------------------|
| 14.34 | Train doors will close up to 40 seconds before departure, <i>I love the passengers who stand pushing a non-illuminated button as the train moves away, ed</i> | 14.43 | Stay behind the yellow line |
| 14.35 | Mind the gap between the platform edge and the train | 14.43 | Upgrade at Newbury |
| 14.35 | Take care when using the escalators | 14.44 | Upgrade at Worcester |
| 14.36 | Beware of overhead high voltage lines | 14.45 | Smoking is not permitted |
| 14.40 | Toilets are located at platform level | 14.47 | Transport for London information |
| | | 14.50 | Take care when using the escalators |
| | | 14.50 | Upgrade at Newbury |
| | | 14.55 | See it, say it, sorted |

The last one is the most irritating, as you also get it on the trains at nearly every station. Whoever at BTP came up with this intensely annoying message should be shut in a small room with it for 8 hours (except we're not supposed to use torture). Is Reading unusually bad or is this stream of messages happening at all major stations?...*thoughts, I suspect the overuse of some messages can be counterproductive with passengers 'switching' off which means vital messages are ignored. I am still waiting for the "Life is hazardous please do not get out of bed", ed.*

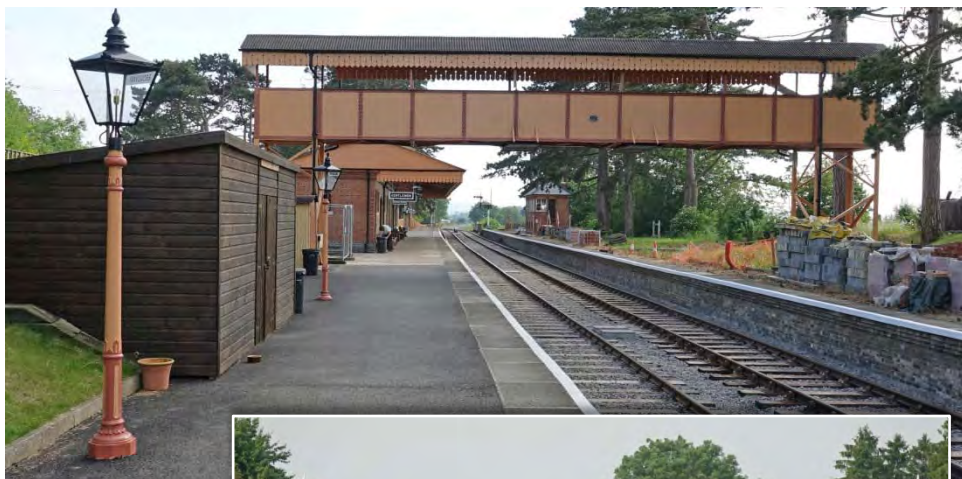
STD GAUGE PRESERVATION NEWS

Broadway Station, Gloucestershire Warwickshire Railway by Trevor Roots:

As briefly reported in the Jan / Feb issue and shown opposite by Colin James at the Diesel Gala, the northern extension to Broadway is now being used. Broadway station has yet to be fully finished with only one platform in use but the re-constructed immaculate period GWR station and end of line are shown in the following photos taken after leaving the Long Marston visit on the 9th June 2018.



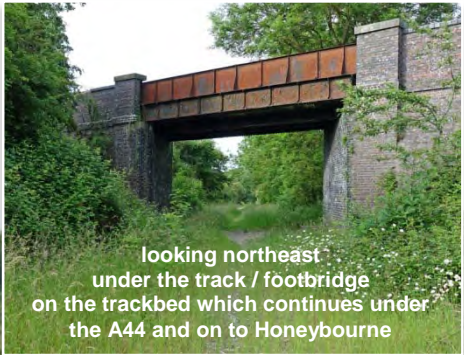
above looking northeast showing the signal box, *below* looking southwest showing the footbridge



right looking
northeast to the
headshunt / stock
sidings
(cov AB 200050 and
unknown dogfish to
the fore) and the
end of the line just
short of the track /
footbridge which
can be taken from
the centre of
Broadway



below looking towards the station from the track / footbridge showing stored stock with
left crane runner 63049 + crane (steam)
 WD214 (62006), shark brake van 993863
 & 6 x dogfish (Q)
right bolster (Q), 6wh milk tank 3043, 5pl
 732296, GUV 86708, cov AB 200169, ferry
 van 787004 & cov AB 200050 & bolster (Q)





As mentioned in the editorial in the May / Jun issue above is the oft struck bridge over the B6432 Station Road, with on the extreme left the signals as seen in the photo of 37215 in GWR Diesel Gala report, showing the clearly obvious warning sign, though not to those who don't look !! The station approach road is on the left immediately under the bridge before the garage and in the distance on the road stretching ahead to the southeast is Broadway itself, ½ mile away, as is the nearest car park. We in fact trekked from the car park along the track to the bridge over the end of the line but in fact we realised that we could have driven up to it and saved the 1 mile walk, Still Chris had been patiently waiting at LM and we could be nosey looking into some nice properties on the way, not that I needed more walking !!

Misc News: Good news that 8 teenagers who trashed the NYM teak set on the 22nd July have been caught and convicted. Seven of the eight coaches have returned to service but the most severely damaged was Buffet Car 641 which is seen below at Wirksworth, EVR where it is being repaired. Unique and irreplaceable ornate glass lampshades were some of the fixtures destroyed but I bet they couldn't even understand the distress that causes to preservationists.



Cl108 DMU 51933+56504 has been offered for sale by SWR.

An appeal has been launched by 125 Group for suitable covered accommodation at its base at Ruddington on the GCN where the prototype 41001 and 6 coaches are based. With HSTs due to become available in the near future it is vital somewhere is established to house, maintain and restore their fleet.

The CPR extension to Princes Risborough will open on the 15th August 2018 creating a

new network connected preserved railway. It is the closest line to London with such an interchange.

To relieve pressure at Crewe, LSL has moved 4-6-2 4464 *Bittern* to a new storage facility at the former Hornby factory in Margate. This site will be used for locos awaiting overhaul and will eventually be open to the public. A car from the Cl.503 previously stored at Coventry is also present.

A new preserved railway, the Lancashire Mining Museum has been founded at the former Astley Green Colliery which houses 26 internal combustion engined mining locos, the largest collection in the country. Shunting demonstrations were undertaken during the Lancashire Steam Heritage Festival in May.

Middleton Railway (MID):

On the 15th July 2018 MID was hit by the second arson attack in recent times, the first severely damaged Inspection Car 998901, when the Jewsons Builder Merchant adjacent to the main Moor Road Station was totally destroyed. A palvan, 766924, used for stores sat on the siding alongside the fence was destroyed along with the tools within. The heat was so intense it melted the PA system, damaged the Museum Shed cladding, shrivelled plants and affected painted surfaces. The fire happened on the eve of their Gala which had to be cancelled. They were also to judged in a floral completion and that had to be postponed for a week so plants could be replaced. Happily we visited the following Sat, the 22nd July on our way back from the DRS Open Day so the railway was open.



above the totally destroyed twisted metal frame of Jewsons, the palvan was behind the wagons seen on the right where you can just make out the burnt fence

PRESERVATION PHOTO SPOT: DIESEL



above 37146 & 37023 Allelys Yard, 9th June 2018 (Paul Sumpter)

STOCK MOVES

With so many new stock moves occurring, particularly with various barrier wagons and transfers of stock between operators or into store, I thought it best to start showing these all together as this will become a regular sight over the next few years.



43128 t&t 43125 moving
off lease ex-GWR Mk3 coaches
to Ely Papworth Sidings (17.29) 7th July 2018 (Keith Partlow)



above 56032, 56031, 56069 recently
moved from Leicester Depot, with 66414
& 08220 (not previously illustrated as
having moved from GCN
21st July 2018 (Colin Pottle)

right 56069 hauled by 66781 passing
Stafford on 0Z70 Leicester – EML
(11.41) 13th July 2018 (Harold Hull)



56311, 56037, 56032 recently moved
from Leicester Depot, with the
remains of 66048

EML, Stoke-on-Trent
21st July 2018 (Colin Pottle)

LIGHT RAIL & METRO NEWS

Metrolink by Geoff Hope:

May 2018 (cont): On the 26th May it was noted 1007, to be preserved at Heaton Park tramway, was no longer stabled outside Old Trafford depot.

On the 30th May a passenger at Bury Interchange had his hand trapped in a door and dragged approximately 15 metres along the platform before the tram stopped, the doors were reopened and the passenger boarded the tram. On the same day Brooklands, on the Altrincham line, was closed with trams passing without stopping when a Second World War hand grenade was pulled out of the Bridgewater Canal by a magnet fisher. It was later disposed of by a controlled explosion.

June 2018: A planning application including an interchange on the site of Stockport bus station has been submitted. If approved it would be completed by 2021 including a facility for Metrolink. The council have been pushing for the network to be extended to the town for years. TfGM has indicated it "made economic sense" to connect Middleton in North Manchester to the Metrolink network from the Bury line and it would include a P&R scheme. Proposals will be drawn up for a fully costed feasibility study and a business case to be presented to Greater Manchester leaders. On the 5th anniversary since it was opened in 2013, the East Didsbury line now carries 430,000 passengers every month. Figures released by the DfT show passenger numbers increased on the whole network for 2017/18 to 41.2m from 37.8m in 2016/17, an increase of 9%.

On the 12th June a tram struck a pedestrian on Market Street who suffered only minor injuries, trams were diverted for approximately 20 minutes along the SCC. On the 14th June there was more vandalism on the Oldham/Rochdale line. Services were suspended between Hollinwood and Failsworth when three trams were attacked by a gang of youths seen hurling bricks and stones at the trams smashing windows. One person was treated for having glass in their eye.

To celebrate Clean Air Day on the 21st June Metrolink were offering free travel before 07.00 and after 19.00 hours to encourage people to change their travel arrangements to help to improve air quality. Anyone taking up this offer could finish up working a 12 hour day!!

right Metolink 3043 (Heart Radio) St Peters Square, Manchester 12th July 2018



On the morning of the 25th June tram 3035 was involved in a collision with a car in Oldham town centre. No injuries were reported. Services were suspended while the car was removed from the track. On the 28th June another car finished up on the tracks on the Airport line blocking both lines affecting services to/from the Airport. In the early hours of the 30th June at 06.00 a car finished up on the tracks at Victoria described as "more spectacular than the average vehicle onto the tracks incident" finishing up facing as if it was coming out of Victoria. It appears the driver tried to turn the car round on the raised track. The wreckage was cleared an hour after the incident allowing the SCC to open towards Exchange Square for East Didsbury services which ran via Market Street during this incident.

Vodafone have been supplying Wi-Fi on board all the 120 trams and 20 Metroshuttle buses for 12 months and has now become the official Wi-Fi partner of Metrolink. The extended partnership will include a Vodafone advertisement on four trams. This now takes the total to ten trams carrying advertisements as listed with photos by Geoff of those not yet illustrated either in this or the next issue: Vodafone: 3017 (next issue), 3047, 3093 & 3100, Capital Radio: 3030 (next issue), "Just Eat" app: 3039 & 3085, Heart FM: 3043 (see above), Slaters Mensware: 3069, Hits Radio Manchester: 3103 (next issue) (the new name for Key 103, the latter name was advertised on 3095).

July 2018: On the 2nd July a deal was signed for 27 new trams at a cost of £72m, the first tram 3121 is expected to arrive in February 2020 with the remainder being delivered by June 2021. All will be to the same specification as the current fleet. The new trams are being funded by the Governments Transforming Cities Fund. The new trams are all in the new **Summer Editions** of the **Combine** and **Pocket Book**.

On the 3rd July during the morning rush hour a tram v car incident occurred near the Ladywell stop on the Eccles line. No injuries were reported. On the 7th July in the early hours a male was trapped under a tram at the Oldham Central tram stop and sadly later died from his injuries. Tram surfing appears to be a new sport during school holidays for moronic youths. Either they are sat between a double tram on the guard when it has been raised acting as a seat with feet on the couplings, or hanging on the rear of a single tram by the windscreen wiper. This has been reported on a couple of occasions and let's hope it doesn't become a regular occurrence.

The Unite union representing Metrolink drivers are balloting more than 340 drivers over strike action after they were offered a 3.3% pay increase as well as a new deal for working unsociable hours. A possible date for the strike could be the weekend of August 24th, Manchester Pride weekend.

Following the initial trackwork laid at Parkway Circle tram stop on Thursday 1st February tracks have been laid at the intu Trafford Centre tram stop and at three other stops, with platforms also taking shape at four of the six stops on the Trafford Park extension. Track only will be laid shortly at Warren Bruce Road where a turnback will be provided for the football matches and major events at Old Trafford. The recent completion by the utility companies rerouting over 190 kms of pipes and cabling will allow construction of the tramway along the complete route. In September the second structure on the line will be to bridge the Bridgewater Canal, the first structure at Pomona will route the line to ground level by the Manchester Ship Canal from the tram stop which started at the end of July taking 13 days.

A new four zone fare system was approved by Greater Manchester Combined Authority reducing the number of fares to 10 will take effect from January 2019.

Observations for Saturday 21st July (100 trams in service)

Cornbrook 09.15-09.40/11.50-13.30:

Altrincham - Bury: 3004+3024, 3005+3022, 3009+3035, 3011+3045, 3012+3053, 3019+3039, 3020+3052, 3023+3041, 3026+3028, 3032+3054, 3037+3038, 3040+3049

Altrincham - Piccadilly: 3010, 3015, 3029, 3033, 3042+3043, 3046

East Didsbury - Shaw / Rochdale: 3016, 3027, 3030+3080, 3031, 3044, 3051, 3055, 3057, 3058, 3061, 3065+3102, 3067, 3069, 3078, 3083, 3085, 3087, 3097, 3099, 3101+3119, 3103, 3106, 3109, 3110, 3114+3116, 3118

Eccles - Ashton: 3062, 3066, 3070, 3071, 3089, 3093, 3094, 3105, 3108, 3113, 3115

Media City - Ethiad Campus: 3017, 3063, 3068, 3074, 3084, 3086, 3104, 3107

Airport - Victoria: 3064, 3072, 3075, 3081, 3082, 3088, 3090, 3092, 3095, 3100, 3112

Queens Road Depot: 1010-1025

1027/28, 3008, 3021, 3073, 3076, 3079, 3096, 3098, 3120

Victoria 10.30-11.35: Bury - Piccadilly: 3002+3048, 3006+3059, 3007, 3013, 3014, 3018, 3047

Old Trafford Depot 1345-1400:

1020/23, 2001, 3036, 3050, 3060, 3111, 3117

Trams not seen: 3001, 3003, 3025, 3034, 3056, 3077, 3091

South Yorkshire Supertram:

new 'Citylink' tram-train

right 399204 High St,
Sheffield (10.18)
19th April 2018
(James Holloway)





with the start of the newly named West Midlands Metro



comes a new blue livery, on the second battery fitted tram 31, Wednesbury Parkway (11.25) 17th July 2018 (James Holloway)



COACH MATTERS

above the first GWR short set 49101 + 48111 + 48102 + 48101 (t&t by 43187 & 43198) Plymouth 24th July 2018 (Martin Hall), the GWR Mk.3 coaches operating in the new short sets have had their slam doors replaced with sliding plug doors as seen below on 48111



FRANCHISE / NETWORK NEWS

As of the 25th June LNER was reborn on the ECML as the 'government'; took over control of the former VTEC franchise. The name will remain once a new private operated franchise takes over in 2020.

TPE has expanded the driver training with Cl.68s from the WCML to include York to Scarborough (see below). Originally intended to start operation from the May timetable, the introduction of services with Cl.68 t&t Mk5s has now been put back to the autumn.



Following the award of the Wales & Border franchise details of rolling stock procurement are emerging. Cls.142/143/150 & 153 operating the Cardiff suburban services are to be phased out by the end of 2019 with Cl.153s on the Heart of Wales line to go by 2022. Services on this latter route are to receive cascaded Cl.170s from GA in 2019. South Wales Metro services are to be operated by 7 x 3 car plus 17 x 4 car Stadler Flirt tri-mode units and 36 x 3 car Stadler Citylink Metro vehicles similar to those operated by Sheffield Supertram. They will however be fitted with batteries for use over short non-electrified sections. These Citylink tram-trains will be based at a new depot to be built at Taff Wells due to start construction in 2019 with completion by 2022. Other non valley services are to receive 11 x 4 car Stadler Flirt DEMUs. Cl.158 & 175 on longer distance services are to be taken off lease from late 2021 and 2022 onwards respectively and replaced by 77 CAF Civity DMUs formed of 51 x 2 car and 26 x 3 car sets. These are to be built at the new facility in Newport. All these are to be in service between 2022-24. In the meantime West Wales is to receive 5 Cl.153s from GWR in 2019. The Holyhead loco hauled services of Mk3 coaches and DVTs will be replaced by Mk4s and increased from 2 to 3 sets. The Wrexham to Bidston and Llandudno to Blaenau Ffestiniog routes are to receive 5 x 3 car Vivarail Cl.230s.

The new WMR fleet is to be 36 x 3 car plus 45 x 5 car Bombardier Cl.730 Aventra EMUs and 12 x 2 car plus 14 x 4 car CAF Civity Cl.196 DMUs. 230003 the first of the 3 x 2 car Vivarail Cl.230s is now in WMR livery at Long Marston with 230004 away for painting at WG Tanker Services in Derby. 230005 is also being modified from its former D78 identity. The new units will replace 37 x Cl.350/2 EMUs (due off lease in 2021), Cl.150/153/170 DMUs and Cl.319/323 EMUs (off lease in due course). A new revised livery is being adopted after the trial on 172339 with 172342 receiving orange cabs and purple bodysides. Stock not part of the longer term fleet are to be re-liveried with orange extending down 1/3 of the first cars with silver bodysides as appearing on Cl.323s and Cl.170s (see below).





above 172342 sporting the revised corporate WMR livery, Birmingham Moor St (14.15) 31st July 2018 (James Holloway) compare this with the first livery option on 172339 *top* which now has a revised livery on the centre trailer, Worcester Shrub Hill (14.51) 15th May 2018 (Sean Davis)



The GWR franchise is not to be split as confirmed by the Secretary for State in a Transport Select Committee on the 24th June 2018.

With the timetable and stock availability issues affecting Northern the Windermere branch was left without any traction so WCR stepped in with 2 t&t locos + 3 x Mk2 coach shuttles from the 17th June to 1st July 2018. 57316 was paired with 37669 but the latter was swapped after complaints of noise to be replaced by 33029, then 57314. 47245 was also used after the 28th June. The photos (previous page bottom) taken on the 28th June by Spencer Conquest 57314 t&t 57316 are seen at Windermere (11.17) and later at Oxenholme (12.04) (inset).



left as reported in
FRANCHISE /
NETWORK NEWS in
the last issue Cl.345s
are now operating on
the GWML
345015 on 9P29 12.47
Hayes & Harlington –
Paddington,
Ealing Broadway
(12.59) 9th July 2018
(Colin James)

A new open access operator Great North Western Railway (GNWR) has been awarded the rights to start a service between Blackpool North and Euston starting in September 2019 possibly using redundant (by then) Cl.91s and Mk4s.

Cl.385s finally entered service with ScotRail between Glasgow Queen Street – Edinburgh Waverley on the 23rd July 2018 with 385003 + 385104. However the Cl.365s are to remain in service for the foreseeable future with workings as seen below and opposite.



the happy face EMUs...Cl.365s
with ScotRail branding on hire to cover for
lack of available Cl.385s

above 365523 Glasgow Queen Street
(13.04) 23rd June 2018 (Iain Gardiner)

left 365517 + 365527 Edinburgh Waverley
(20.50) 16th July 2018 (Iain Gardiner)



above 365509 Glasgow Queen St (10.37)
5th July 2018 (Iain Gardiner)



right 365525 Edinburgh Waverley (20.11)
16th July 2018 (Iain Gardiner)



365537
Glasgow Queen St
(10.44) 4th July 2018
(Iain Gardiner)

right prior to starting in service several
Cl.385s have on driver training, mostly
in a Cl.385/0 + Cl.385/1 formation as
with

385123 + 385015, Edinburgh Waverley
(13.37) 13th June 2018
(Iain Gardiner)



YARD PHOTO SPOT

Travelling back from the DRS Open Day to our overnight stop north of Doncaster meant a trip through the Peak District so first it was a look in at Peak Forest (photos included here) then Doncaster Decoy Yard (including Wood Yard and Station) and fortuitous it proved to be, with 3 re-numbered ex-DBC locos including 2 out of the 3 in special liveries, all cops. I missed the resident CI.56 as it was between swap over, though caught 56113 at Crewe Basford Hall under the A500 Road bridge.

PEAK FOREST



left 37716, above 66200 & 66069



66786 (ex 66141)



66082 & 66099 with
mainly HTA and MMA wagons



above with Peak Forest shunting now in the hands of Victra Railfreight
Colas 56113 (since replaced by 56105) and DRS 37716 have been hired for shunting duties
as seen on the 6th July 2018 with 66788 (ex 66238) also present having worked in on 4M11 and
reversing into the quarry with empties from Washwood Heath (13.42) (Colin Pottle)

FREIGHT MATTERS

*To allow members to keep their copy **UK Wagons** as up to date as possible, changes are provided via this spot every month. Please let Trevor Roots know if you have any amendments or wish pass on any other helpful wagon information, contact details on page 2.*

UK Wagons 2018 is now available incorporating many changes.

Thanks to the following for information: Andrew Cameron, Mike Rumens, Alex Ford, Rob Anderson, Steve Gillam, Roger Templeman

Errata: **JHA** 19320 should be an outer wagon so marked by *, **JNA** 31.70.5500.350-0 should have check digit 1

Still Extant (Add): **KSA** 33.70.4739.053-5

Out of Store: 310524, 31.70.5992.099-9

To Store: 394186, **Eastleigh Works** (from York Yard South) 370040/048/051/061/065/070/136/200

Re-numbered: **FIA Bogie Megafret Intermodal Twin Container Flat** 33.70.4938.113-8/327-2 to 33.70.4938.742-2/099-9 respectively

Converted / Re-numbered: **HTA Bogie Coal Hopper** to **HRA Bogie Aggregate Hopper** 310482/0682/1122/0323/0930/0961 to 41.70.6723.046/047/049/051/052/053 respectively 41.70.6723.012-014/018-020/022-026/028//029/031/033/034/036/037/044/045 have also been released but with unknown 'donors'. The following have moved to Stoke for assessment and conversion 310978, 311023/068/099/160. After overhaul the following have moved to WH Davis for completion 310327/404/870/897/932, 311019



above right to left HRA 41.70.6723.022-3/024-9/026-4/025-6/019-9/18-1/20-7/023-1
below a closer view of HRA 41.70.6723.022-3, Toton 14th July 2018 (Neil Dix)



MHA to MPA 394010/019/030/073/095/126/159/242/262/284/308/324/393/394/518/571/656/704/869 910/930/973/991, 396004.091

Some previously stored **JSA Bogie Enclosed Steel Carrier with Telescopic Hoods** are being converted at Eastleigh Works, see **EASTLEIGH WORKS REPORT** for wagons moving in & out

Removed from TOPS / For Scrap / Scrapped: 370039/76, 621458/1539

STOCK CHANGES

*It is hoped that all major changes recorded below will help you keep the **UK Combine**, **UK Pocket Book**, **UK Locomotives** and **UK Name Directory** up to date, (numerous pool code changes will not be recorded). In order to compile as accurate and up to date list as possible, can members please pass on their observations, particularly name changes and multiple unit reformations to the editor, **Trevor Roots**. Where possible, photos of new nameplates will be included as and when a suitable photo is sourced from members.*

Misc. News:

D2289 exported to Italy in 1972 has been saved for preservation and has been repatriated to the UK and HST at Rowley South.

NR have put 31105 & 31233 up for sale

D213 has been moved to LSL to be returned to the mainline

43020 & 43182 were the final power cars to undergo maintenance at Landore Depot

56049 is back in traffic since returning from France in 2006

10 Cl.60s from Colas Rail, the latter all bar 60002 now stabled by the ex-Royal Mail Terminal, Doncaster

66008 the last ex-DBC to be re-numbered & re-liveried is now at ZG

68019/21 have returned to the UK from the Vellum test track along with the first rake of Mk5a coaches

Cl.195101 has been tested at Velim and is now at the Faurei test centre in Romania

221107 sustained fire damage on the 18th July 2018

331001 is on test at Velim, Czech Republic

The first Cl.710s have been delivered to WN

GBRF has bought 16 Cl.56s from UKRL and all Cl.717s are on test at Wildenrath, Germany with the first delivered to HE on the 18th July 2018

755001 is on test in Switzerland

NR test trains are temporarily based at BO due to the Derby blockade

WMT have introduced a revised and new livery for its WMR stock

Liveries:

43032/168 into ScotRail InterCity livery

43484 the last ex-GC into EMT revised livery

43170/189/198 into GWR livery

47853 is in BR blue and reverted to 1733

66413 is in a new orange & black Genesee & Wyoming FL livery

66104 into DBC red livery

68029 into TPE livery

As I have been overwhelmed updating the **UK Combine & UK Pocket Book** for the **Summer Editions** many amendments that have occurred since the May / Jul issue are not shown here but are all in the new books. The following are new updates not in the books.

Errata: (C – Combine, P – Pocket Book)

p188 (C) p201 (P) 94280 is 94240

Got in a bit of a muddle with the Vivarail Cl.230s and therefore stored D78 stock so this is correct formation/numbers on p72 (C) p76/77 (P)

230001 300001 300201 300101

[7058+17128+7511]

230002 300002 300102 [7122+7067]

230003 300002 300103 [7069+7127]

230004 300003 300104 [7100+7500]

230005 300005 300105 [7066+7128]

therefore add 7017 & remove 7127, also 17073 from spares

Locos Exported: (to Croatia from Romania)

92002/05/12/24

New:

EMUs:

710261-263, 717005/007-009, 800311/12

Coaches: (Mk 5A)

11501/04, 12701-03/10-12, 12801/04

Re-numbered:

Locos: 47853 to 1733 66184 to 66787

Transferred / Stored: (* preserved) (# hire)

Locos:

08483 LA 08531 LHG 08624 FX

08774 AVD 08874 WO 08950 (WI)

37901 (ZG) D182 MRB 40106 SVR#

56069 (EML) 56081/098/104/312 CDF

60047/76/85/87/95 Doncaster

68019/21 CG D2279 EAR 4315/164 (ZB)

EMUs: 365533 GW 170472/73 NL

DMUs: 59522 GCN

Coaches: 10202 GCN

HST: 41124/42, 42075/255-257/263/291/293/

333/572/577, 44029 (EY)

Re-numbered Coach: 5044 to 99327

Names (* re-applied)

57007 John Scott 12.5.45-22.5.12

66421 Gresty Bridge TMD

390001 Bee Together

800026 Don Cameron

Mark Carne CBE

43013 (Neil Dix)

Edinburgh Castle

above & below 47727 (Carl Watson)

Caisteal Dhùn Èideann



above & below 800019 (Colin Pidgeon)



800026 (Colin Pidgeon)

Recent but not Previously Illustrated:

Bob Woodward

above & below 800020 as reported
in May / Jun 2018 (Colin Pidgeon)

Elizabeth Ralph

British Transport Police Nottingham

the other [plate from 43467
as reported in Mar / Apr 2018 (Colin Pottle)

World Speed Record - HST

The 30th anniversary of Power Car 43102 (43302)
reaching 148.5mph on 1st November 1987, setting the
world speed record for diesel traction which still stands today.

43302 as reported in Dec 2017 (Colin James)

SHERLOCK HOLMES

20227 as reported in May / Jun 2018
(Stuart Moore)

WILLIAM SHAKESPEARE

180108 as reported in May / Jun 2018
(Colin James)

New Location Code:

CDF - Castle Donnington Freight Terminal

The following is an updated list of new or re-applied names since 2011 that we have not yet illustrated on all stock listed in our **NAME DIRECTORY** (steam & industrial locos excepted). Please note I only want photos of nameplates in focus, straight and centred side on. Photos supplied of those recently requested will be shown as and when space permits.
(* re-applied, \$ temporary)

D&E Locos:

01571 ALEX
08460 SPIRIT OF THE OAK
08611 Longsight TMD (since removed)
08641 Pride of Laira
08648 Amanda
08757* EAGLE CURC
08790 M.A. Smith
08993* Ashburnham
20096 Ian Goddard 1938-2016
31106 Spalding Town
D6501* Sea King
37800 Cassiopeia
43132 Aberdeen Station 150th Anniversary
45133 \$ Brian Lockey (one side only)
Gerald Lambert (one side only)
66748 West Burton 50
66776 Joanne
66789 British Rail 1948-1997
88007 Electra
91118 The Fusiliers

Steam Locos:

90775 THE ROYAL NORFOLK REGIMENT

DMUs:

150275 The Yorkshire Regiment Yorkshire Warrior

EMUs:

375619* Driver John Neve
375710 Rochester Castle
390003 Blackpool Belle

Track Machines:

DR 73939 Pat Best
DR 77001 Anthony Lou Phillips
DR 98923+98973 Chris Lemon

NEW STOCK

Though in the past I have attempted to individually show all new stock, with the flood of new stock recently delivered and proposed over the next few years and less pages to work with, it is now impractical to do so. I will continue however to show all new locos and smaller classes of units and coaches but I will only show a representative selection of the latter types, particularly from as many different members / different locations as possible or to illustrate a comparison. So if a particularly unit has not been shown but you photograph it in a more 'unusual' location within a reasonable time of it entering service then I will try to include it.



two overall views of the recent new ScotRail & GWR stock at Hitachi, Newton Aycliffe
above 385007, 385109, 800310 + 800313, 385110 + 385108 + 385106, 385010, 385011 + 385xxx + 385033, 7th June 2018
below 385107, 385110, 385113 + 800319, 385013 + 385xxx, 385118 + 385105 + 385114, 800317, 08484, 800316, 23rd July 2018



above GWR 800304 Didcot (12.14) 22nd June 2018 (Spencer Conquest)



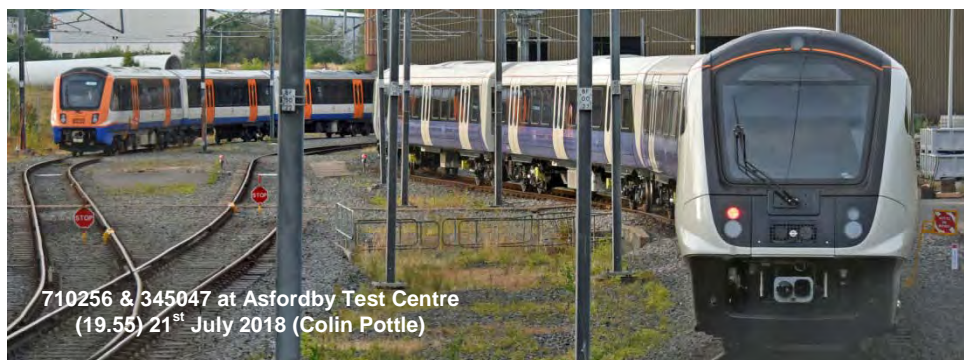
above LNER 800201 (815201),
Doncaster 18th July 2018

right LNER 800103 Doncaster (10.58)
15th June 2018 (Andrew Turnidge)

below LNER 800202 York - Peterborough,
Doncaster (12.46) 7th July 2018
(Andrew Turnidge)



left
TL 717009 + 717005
on Dollands Moor - Hornsey EMU Depot
hauled north by 66745, Grange Park
(12.37) 18th July 2018 (David Berg)





above 68032, not illustrated previously, on TPE driver training with 68027 on 0B94 10.05 from Scarborough, York (10.52) 13th June 2018 (David Rice)

left 68033 the last Cl.68 to be illustrated, Haymarket (17.13) 29th June 2018 (Spencer Conquest)

TRANSFERS



transferred from Tisbury Jct
DMU 51372 Toddington, GWR
29th July 2018 (Colin James)

CONVERSIONS



left & below
19001
(DVT 82113)
nearing
completion prior to
testing a week
later
Bo'ness, BKR
17th July 2018



below
51353 (117301) now fully converted,
liveried and branded
LEEMING BAR COMMUNITY HUB
(branding on platform side only)
Leeming Bar, WEN 18th July 2018



LIVERIES

*This section will endeavour to show all new liveries / variations or those existing ones where not carried on the stock before. Liveries that become 'extinct' will also be covered. As with names, it may take a while after the livery application before a photo is sourced from members. New liveries may also be shown in other articles: GLV 68504 & 47727 in **EASTLEIGH WORKS REPORT**, 37407, 68019/021 in **DRS OPEN DAY REPORT**, 37409 in **TRAFFIC & TRACTION NEWS**, & 170516, 172339/342 in **FRANCHISE / NETWORK NEWS***



above following re-livery 390001 was renamed to commemorate the 22 victims of the Manchester Arena bombing with 22 bees in a heart shaped design on the nameplate and both cab fronts, Crewe 20th July 2018, the day of the naming



right & above 43318 showing the Inter-City 125 40th Anniversary branding, Doncaster 21st July 2018



the new LNER branding on *above* 91127 showing the full height vinyl which cleverly keeps the existing red & white livery in the interim as it includes part of the white sweep at the bottom whilst covering the Virgin logo, Doncaster West Yard, 21st July 2017 and *below* 43274 showing the slightly different vinyl required on Cl.43s to that of the Cl.91s, Doncaster, 18th July 2018



above 378216 with LGBT support branding, Camden Rd (12.49) 31st July 2018 (Colin James)



above 360205 with TfL branding on 2Y28 12.22 Heathrow Terminal 4 – Paddington, Ealing Broadway (12.46) 9th July 2018 (Colin James) note this unit was used as an internal shuttle between Heathrow terminals prior to takeover by TfL



above to celebrate England getting to football World Cup semi-finals 800018 was adorned with all the names of the squad, Swindon (11.10) 11th July 2018...clearly a bad luck omen !! (Colin Pidgeon)



above 43169 + 43183 Doncaster 15th June 2018 (Andrew Turnidge)
with more ex-GWR Cl.43s moving north to Scotland and being re-liveried here are some of them



above & below 43134 & 43143 showing the two different silhouettes on each side representing the 7 Scottish cities, Aberdeen Clayhills Depot Sidings, 7th July 2018





above 91103 Celebrating Pride
with various LGBT rainbow logos,
King's Cross (16.12)
9th July 2018 (Colin James)



above ex-GWR 180103 released
from Eastleigh Depot in GC livery,
heading north as 5Q53 11.30 to
Bounds Green, Ealing Broadway
(13.11) 9th July 2018 (Colin James)



above 66131 on 6C48 Oxford Banbury
Road - Whatley, Swindon (14.30)
15th May 2018 (Colin Pidgeon)

more Cl.66s & 67s in corporate DBC red



above 67004 Doncaster (17.36)
27th June 2018 (Spencer Conquest)



left 66035 on 6V03 Wembley Euro Ops -
Cardiff Docks, Swindon (14.30)
17th May 2018 (Colin Pidgeon)



above with Cls.159 & 444 previously illustrated here is a Cl.450 in the new SWR livery 450111 Clapham Jnct (17.35) 31st July 2018 (Colin James)



left 483006 with **Island Line** branding, this is the only unit so far branded, Ryde, IoW (11.42) 16th June 2018 (James Holloway)

below 55032 (121032) has lost its tatty ex-ATW livery for a gleaming coat of BR green, Leeming Bar, WEN, 22nd July 2018

below the remaining 3 Cl.170/2s 170217-73 have now succumbed to corporate GA livery with 170273 the last to carry the former GA livery...RIP, as seen at Thurston on 2L75 11.50 Peterborough - Ipswich, 17th May 2018 (Keith Partlow)



below 170273 in new GA livery Ipswich (14.09) 24th July 2018 (Keith Partlow)





left
800008 with #trainbow
Reading (10.52)
7th June 2018
(Graham Stockton)

right 2-6-2T 41241 in a very striking livery,
Haworth, KWV (11.30) 27th June 2018
(Steve Mann)



left 43042 5th June 2018



above 43092 9th Julv 2018



above 43098 9th July 2018

more GWR Cl.43 HST
power cars in corporate
green

all Swindon (Colin
Pidgion)

right 43004 3rd June 2018



