

TRACKS



Inter City Railway Society – July 2019



Inter City Railway Society

founded 1973

www.intercityrailwaysociety.org

Volume 47 No.6 Issue 554 July 2019

The content of the magazine is the copyright of the Society

No part of this magazine may be reproduced without prior permission of the copyright holder

President:	Simon Mutton - simonmutton@btinternet.com (01603 715701) Coppercoin, 12 Blofield Corner Rd, Blofield, Norwich, Norfolk NR13 4RT
Treasurer:	Peter Britcliffe - treasurer@intercityrailwaysociety.org (01429 234180) 9 Voltigeur Drive, Hart, Hartlepool TS27 3BS
Membership Sec:	Colin Pottle - membership@intercityrailwaysociety.org (01933 272262) 166 Midland Road, Wellingborough, Northants NN8 1NG Mob (07840 401045)
Secretary:	Christine Field - secretary@intercityrailwaysociety.org contact details as below for Trevor
Chairman:	filled by senior officials as required for meetings
Magazine:	
Editor:	Trevor Roots - editor@intercityrailwaysociety.org (01466 760724) Mill of Botary, Cairnie, Huntly, Aberdeenshire AB54 4UD Mob (07765 337700)
Sightings:	James Holloway - sightings@intercityrailwaysociety.org (0121 744 2351) 246 Longmore Road, Shirley, Solihull B90 3ES
Photo Database:	Colin Pottle
Books:	
Publications Manager:	Trevor Roots - publications@intercityrailwaysociety.org
Publications Team:	Trevor Roots / Eddie Rathmill
Website / IT:	
Website Manager:	Trevor Roots - website@intercityrailwaysociety.org contact details as above
Social Media:	Gareth Patterson
Yahoo Administrator:	Steve Revill
Sales Manager:	Christine Field contact details as above for Trevor
Visits Co-ordinator:	Trevor Roots / Christine Field / Tony Whitehead

Contents:	
Officials Contact List.....	2
Society Notice Board.....	3-4
Events.....	4-5
ICRS Sales	64
Regular Current News / Sightings:	
Eastleigh Works Report.....	6-9
Franchise / Network News.....	9
Freight Matters.....	56
Infrastructure News.....	33-38
Light Rail, Metro & Underground News.....	55-56
Out & About Sightings.....	49-54
Stock Changes.....	57-59
Liveries.....	63
New Stock.....	59
Transfers.....	60-62
Technology News.....	22-23
Traffic & Traction News.....	27-28
Other Feature Articles:	
Accidents.....	23
Coach Matters.....	45
Hope Cement Works Open Day Report.....	43
Long Marston Visit Report.....	19-21
LSL Open Day Report.....	10-18
Narrow Gauge Matters.....	24-25
Off The Beaten Track.....	39-40
Photo Spot: NR Test Trains.....	44
Photo Spot: Rail Tours.....	32
Signal Box Survey.....	48
Std Preservation:	
Galas.....	41-42
News.....	25
Photo Spot: Diesel.....	54
Photo Spot: Forgotten Loco.....	45
Photo Spot: In Works.....	54
Photo Spot: Steam 1.....	40
Photo Spot: Steam 2.....	46-47
Stock Moves.....	29-31
WD Austerity 0-6-0ST Loco Survey.....	31

Front Cover Photo: 73951 t&t 73952 with coaches 9523 + 977997 + 72631 + 975091 in the carriage shed on the evening prior to the LSL Open Day, Crewe, 7th June 2019

£2.50 where sold separately Printed & distributed by Henry Ling Ltd, Dorset Press, Dorchester DT1 1HD

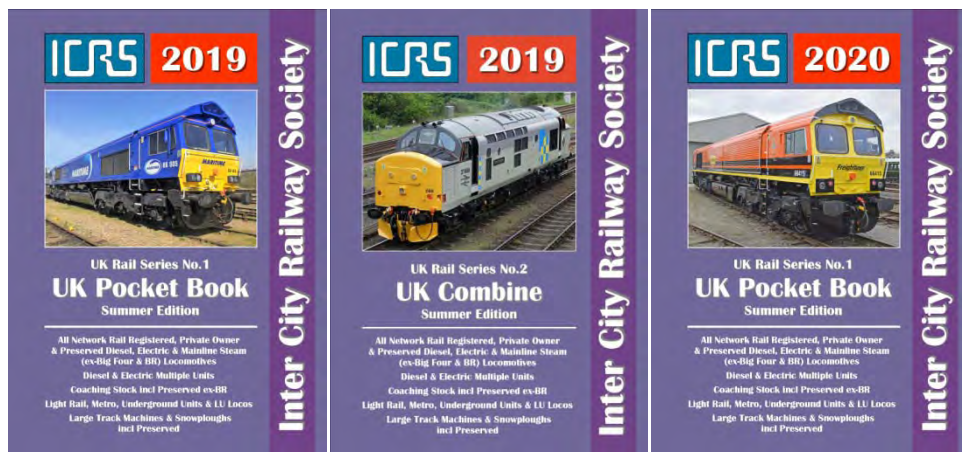
SOCIETY NOTICE BOARD

Editor's Comments: What a manic period with two shows to attend and the attendant preparation, then straight into production of the Summer Editions of the Combine and Pocket Book, the release of which was planned for the DRS Open Day on the 20th July 2019. As it made no sense to head home in between the LSL Open Day and our visit to Long Marston a week later we took the opportunity to travel around Wales and continue my hunt for signal boxes. Considering the lack of time to prepare for our own holiday, the planning I did manage ensured all but a few were seen. With 6 boxes on the northern part of the Settle-Carlisle line, the remaining 3 eastern ones on the Carlisle – Newcastle line, assorted ones along the Welsh border and a few preservation sites also ticked off, I managed a decent tally of 55 of which 46 were 'cops'. The signal box list has now considerably grown, as I have now added those on preserved lines, to around 530 of which about 390 are on NR metals though not necessarily operational. Most preserved boxes are now listed but more NR ones have yet to be added as have privately owned boxes, which will be more challenging. So if you know of any tucked in a back garden or on an abandoned railway line let me know.

With two big reports on the LSL Open Day and Long Marston I have had to be ruthless again with what I can fit in as only 64 pages this month so most July photos submitted will appear next month. Clearly with the heavy workload, **TRACKS** production has slipped away from end of month deadlines and it will take a couple of months to get back on schedule. To get this issue out the timescale slipped back a few days and with another 04.00 finish but that was partly as I had to watch the climax of the cricket World Cup live, so worth another sleepless night.

Publications:

As mentioned above the Summer Editions of both the **UK Combine** and **UK Pocket Book** are to be released for the DRS Open Day at Carlisle. If you are reading this after that date then they are now available. This is the second year that the wire bound version of the **UK Pocket Book** has been released as a Summer Edition but for the first time, the original version with spine has also been produced as we sold out of the first batch released in January 2019. So those who prefer this perfect bound version can also now have the benefits of the many updates.



above left Pocket Book (wire bound)

above right Pocket Book (spine)

New additions are the Cl.69s (conversions from Cl.56s), carriage numbers for the Cl.730 EMUs plus various updates to other new build EMUs. Several minor tramways have been added as has the new Glasgow Subway units. The Preserved Steam Loco section has been expanded with the addition of the first batches of industrials, namely WD Austerity 0-6-OSTs, Fireless and Crane Tanks. I have also added boiler expiry dates for active steam locos, a very useful bit of info if you want to see a loco working before it might then disappear into a pile of bits for years. You can now plan which to see first.

A few more coaches have also been 'found'. So now even more for your money and definitely not just an updated retread of the first 2019 edition.

An updated list of Location Codes used in the Combine and Pocket Book, with revisions codes and additional locations, has been put on the Reference page of the website, which you can download.

Membership Matters: New Members: (24)

(* ex-members re-joined) (AFC – Additional Family Child, AFA – Additional Family Adult)

David Adams (Gloucester), **Mark Bray** (Glossop), **Glyn Clavert** (Enfield), **Adrian Crosby** (Market Drayton), **Malcolm Dear** (Taunton), **David Diegnan** (Nuneaton), **Richard D'Silva** (AFC) (Bicester), **Paul Francis** (Craven Arms), **Bill Hanks** (Sutton Courtenay), **Stephen Hooley** (Breaston), **John Jackson** (Slyne), **Graham Jones** (Colwyn Bay), **Diane Knowles** (AFA) (Bodmin), **Andrew Milliken** (Cockermouth), **Stephen Oliver** (Wrexham), **Paul O'Neill** (Enfield), **Michael Robinson** (Bexleyheath), **Michael Rolfe** (King's Langley), **Anthony Saverton** (Faringdon), **David Swan** (Grimsby), **David Thornton** (Chirbury), **Robert Titmus** (Ely), **Paul Tudor** (Shrewsbury), **Liam Westcott** (Biggin Hill) - a warm welcome to you all.

Obituary: Sadly we have lost Rod Warner (73) from Pontypridd and John Smith (75) from Hornchurch. Condolences go to their families and friends.

Society Magazine TRACKS:

TRACKS is distributed direct from the printers to members in a clear compostable wrapping with an address carrier sheet (reverse printed with a Renewal / Reminder form if appropriate). If any member fails to receive their copy after one week from the estimated delivery date below then please contact the **Editor**. For current info during the month refer to the **TRACKS** page of our website.

Next issue: August 2019

The latest date for articles / info is **Friday 2nd August 2019**
with delivery to members: **PDF Wed 7th Aug 2019** **Print after Mon 19th Aug 2019**
for updates please check the **TRACKS** page on the website

Magazine Contributors (Wagon info contributors shown separately): Thanks to **Chris Addoo**, **Rich Barlow**, **Stan Bown**, **Tony Brzosko**, **Spencer Conquest**, **Sean Davies**, **Brian Derricote**, **Neil Dix**, **David Doulton**, **Derek Everson**, **Barrington Francis**, **Michael Hayman**, **James Holloway**, **Geoff Hope**, **Harold Hull**, **Alan Jones**, **Alan Knox**, **Ian McAlpine**, **Bradley Marshall**, **Lawrence McCormick**, **Stuart Moore**, **Paul Normanton**, **Keith Partlow**, **Gareth Patterson**, **Colin Pidgeon**, **Derek Place**, **Colin Pottle**, **Toby Radziszewski**, **Eddie Rathmill**, **David Robinson**, **Paul Rosser**, **Mike Rumens**, **Eric Salisbury**, **Norman Smith**, **Lee Spenceley**, **David Spencer**, **Graham Stockton**, **Colin Tarrant**, **Andrew Turnidge**, **Malcolm Wallace**, **Michael Warrick**, **Carl Watson**, **Martin Wilcock & Trevor Roots**. We are sorry if anyone has been missed. Photos not credited are by **Trevor Roots**.

EVENTS

All 2019 events organised, either confirmed or with provisional dates are shown below. Further events may be added in due course between issues of **TRACKS** so keep an eye on our website. **PLEASE DO NOT** try to book places for Members Only Visits with provisional dates shown by TBC until they are formalised or where the event though confirmed is many months in advance with details yet to be provided. Once they have, **BOOKING OPEN** will be shown alongside and a request will be made for you to book your place. Most visits do not have limits so no need to panic by booking too early.

Please note that there is no excuse for booking then not notifying us you cannot then attend or have been delayed travelling on the day, genuine reasons apart. As with events where numbers need to be accurately known by the hosts for a tour, food or room capacity this is not acceptable. We have tried to ease the official's organising burden and saving you money in postage by allowing members to pay on the day, but this can be abused as it can be then seen as nothing to lose if you can't be bothered to turn up. We still wish to save time and your money, so we will still try to allow payment on the day but **for those who do not turn up and do not have the courtesy to contact us at the time or afterwards will not be welcome to book future tours without a non-returnable payment up front.**

We dropped the idea of providing our bank details in **TRACKS** again as it seems no sooner than we publish these that we get spurious direct debits appear on the Society bank account. It happened before so if it is a member then that is extremely disappointing. If anyone wants to pay for anything up front then we can provide the bank details on request.

We cannot accept bookings by letter only, as there is no way to quickly contact you if plans have to be amended at short notice.

Visit Applications to Tony Whitehead: Clearly state your name, membership number, and importantly a contact telephone number. If it is for an event with multiple dates eg Carnforth then indicate your preference / availability for the dates shown. Email is best and he will respond asap. Email: anthw884@gmail.com or by Tel: **07895 386777 but no calls after 20.45 in the evening please** as he will be in bed early as he has to be up for work at 04.30 each morning. Best time to ring is after 18.30 weekdays and weekends. Though Tony does not have an answerphone he will return your tel. call promptly if your number is recorded as a missed call, so don't panic. Only if you consistently have any trouble contacting Tony or he hasn't responded after several days then in the last resort contact Trevor or Christine (details on page 2).

MEMBERS ONLY VISITS

West Coast Railways, Carnforth, 2019: BOOKING OPEN (spaces left)

Sat 10th Aug (FULL) & Sat 12th Oct (1)

Though the 2019 visits are fully booked we do have cancellations so there are reserve lists in operation. The 2020 dates will be confirmed in the August issue of which there will be four.

Places are limited to 30 but this is the right number having experienced it firsthand as it allowed questions to be asked of our guide and prevents getting in each other's way...well not too much !! The cost is £20 payable on the day.

For the **Aug & Oct** visits meet at Carnforth Station at 11.25 for an 11.45 start. The tour will take approx. 3 to 3½ hours **so if you are travelling by train please arrange your return accordingly. Needing to leave early can cause problems and we don't want to risk future visits.** There is Pay & Display parking at the station or free spaces on the street can be found nearby.

Hi-viz, sturdy footwear and hard hat / bump cap must be worn. We have stocks of hi-viz vests and bump caps to purchase, so contact Trevor for more details. **All photos taken are for private use ONLY, no public display either online, in magazines or via social media.**

Please apply to **Tony Whitehead** (details above)

Eastleigh Works: Sat 14th Sep 2019: BOOKING OPEN – No limit on spaces

Bookings can now be made for our annual Members Only visit to Eastleigh Works. There will be no tickets and therefore no need to send money, with the fee of £20 payable on arrival. Please be at the main gate around 13.30 at the latest so that you can be let in, pay your money then gather for the safety briefing, prior to starting your visit at 14.00. The fee covers the normal Arlington visit fee (which they donate to charity) and organising stewards. You will get access to all areas until 16.30 and cab rides...locos TBC. Drinks and snacks will be available with our sales stand as in 2018.

Please apply to **Tony Whitehead** (details above)

Applications can be made right up to the day. **But please if you apply to attend and then cannot go, either inform Tony (up until a few days beforehand) or if you have problems just prior to or on the day then contact Trevor (07765 337700).** With escorted access required to let you in, **it will not be acceptable to just not turn up or not let us know you are running late, as we will not wait around to see if you arrive.**

PRESERVATION GALAS to be attended with our sales stand

Nothing planned

OPEN DAYS

Hornby Visitor Centre, Margate, Sat/Sun 17-18th Aug: This is the first chance to visit the One:One collection in the former Hornby factory and tickets are available to buy on line at £10 or £6 for concessions. Tickets can be bought on the day but with strong demand pre-booking is advised.

EASTLEIGH WORKS REPORT

by **Norman Smith** (Photos by **Carl Watson** unless shown otherwise)
for the period 1st to the 30th June 2019

Locos:

03/06 66747 came in for a repaint.

04/06 66789 brought in 73967 for new wheels (see below on the 25/06).



05/06 The frames of 4-6-2 35005 'CANADIAN PACIFIC' were reunited with the wheels on the 5th June 2019 (see below)



07/06 70816 left after having a 'C' Exam and 70814 came in for one.
 09/06 66587 in its new O.N.E. livery left for Southampton Maritime Container Terminal (see **LIVERIES**).
 10/06 73964 t&t 73965 were on and off site with a NR test train before leaving for Tonbridge West Yard three days later.
 13/06 66730 came in for an Exam and left the following day to Tonbridge West Yard.
 14/06 73213 left for Tonbridge West Yard with 66730.
 16/06 66730 brought in Translator Set T7 64664/64707 from Tonbridge West Yard.
 17/06 70814 left after having a 'C' Exam and 70804 came in for one.
 21/06 66750 took Translator Set T7 64664/64707 back to Tonbridge West Yard.
 25/06 D1924 (47810) arrived from Crewe HS for engine repairs.
 26/06 47815 brought in 57312 from Bournemouth Depot for a repaint



Units: Siemens Units receiving modifications during the month:
 444009/022/027/041, 450002/006/013/031/078/114/123/126/543



- 04/06 442408 arrived from Bournemouth Depot and took 442423 back there.
 24/06 Class 117 DMU 51346 was scrapped on site by Raxstar and the cab went to the Cab Preservation Group in South Wales.

Wagons:

Wagon Trips in/out during June were:

- 01/06 66171 brought in VTG
 4024/31/38/48/64/70/91/92,
 4111/13/14/20/24/30 from Llanwern
 Exchange Sidings for further conversions to
Open Steel Carriers by removal of
 Telescopic Hoods.



converted
 JSA 4130, 28/06

- 13/06 FL out 92560. 93353.
 16/06 DBC out 78210/214, 89017/026, 70.7899.059-1
 20/06 FL out 92638
 27/06 DBC out 87.4376.002-3, 87.4384.035-3
 28/06 66738 brought in 17318, 92548/556, 93316/387/395/397/423/429/430, 70.6791.012-7 from
 Tonbridge West Yard



37038 + 37059 07/06

Coaches: Riviera Trains stock moves for this period, including loco:

08/06	37038 + 37059	Pathfinder Tours	"The Yorkshire Explorer"
21/06	66127	UK Railtours	"The Ancient Kingdom"
22/06	66003	Pathfinder Tour	"The Summer Cornishman"

18/06 66131 brought in 1671/1813/3098/3110/3119/4927/21272 from Tyseley Steam Trust.

FRANCHISE / NETWORK NEWS

Cl.37s started operating Rhymney line passenger services on the 17th June 2019 with 37418 hauling 4 Mk2s on the first service to Cardiff. The backup loco is 37025.

The final EMU to leave Glasgow Works prior to its closure was 320310 hauled by 57312 to Shields Road.

Training commenced into South Wales with a 'castle' HST set on the 12th June 2019 with 43198 t&t 43004 seen just after arrival at Carmarthen at 13.00, departing 10 mins later. 43198 had been recently named but not realising it had different plates on each side I didn't look at the other side !!



Cl.442s re-entered service with SWR on the 10th June 2019 with 442020 + 442010 as seen right by Chris Addoo below at Winchester on London Waterloo – Poole at 20.10.

The existing SE franchise has been extended until April 2020

The EMT franchise is to get a new look from the 18th August when Abellio take over. There will be three fleets branded Intercity, Regional and Electric in a new aubergine livery.

Though still a mix of 4 car Cl.378s supporting the new Cl.710s, the four trains per hour full service was restored to the Goblin line on the 24th June 2019.

The roll out of Mk5s on the Highlander portions of the Caledonian Sleeper have been delayed until at least September following wheel flats occurring on the 11-12th June 2019.

In the ever changing world of big business it looks like Freightliner could have yet another new owner as Genesee & Wyoming is in the process of being sold to a wealth fund, Brookfield Infrastructure & Sovereign.

More LNER IC225 sets are now being stood down with BN25 and BN29 now at Worksop with possibly BN5 due next.



LOCOMOTIVE SERVICES OPEN DAY REPORT

The first public Open Day was held on Saturday 6th June 2019 at the Locomotive Services Ltd facility based in the former Crewe Diesel Shed to the southwest of Crewe station. With a variety of traction having been acquired in the last few years it was a much sought after destination for many enthusiasts borne out by over 5000 attending. Hearing of the event we jumped straight in and booked our sales stand to appear and it was well worth it, however the weather didn't play ball and it was pretty damp for most of the day and also plagued the setting up on the Friday evening even though thankfully we were inside. One advantage of having a stand was the chance to photograph stock before the hordes arrived !!



The traction assembled was pretty impressive with 37 diesel and electric locos from 19 different classes plus representative units. There were also 8 steam locos present in various conditions including the two resident dismantled Bulleid Merchant Navies 35022 & 35027 and the nameless 34046 in the final stages of being restored to its former identity after several years masquerading as 34052. Though non-operational, 47841 had been newly named and re-liveried. The two Deltics on site were both anonymous bearing no names or number though D9016 is currently bearing the identity of prototype DP2. There were also 49 coaches scattered around the site including several of their named Pullman tour coaches, but most were stored in various states, under overhaul or awaiting a chance to be resurrected. Only 4 coaches in the middle of the stored row alongside the new carriage shed could not be seen properly but the identities are in the list below. Several wagons were also visible most of which were formerly at Crewe Heritage Centre.

Stock List: includes stock within the main site but behind barriers (* numbers not fully visible alongside side of carriage shed)

Locos:

Steam: (8) Collett 4-6-0 5029 'NUNNEY CASTLE', Bulleid WC 34046 'BRAUNTON', Stanier Black 5 4-6-0 45231 'THE SHERWOOD FORESTER', Stanier 4-6-0 46100 'ROYAL SCOT', Thompson Pacific 4-6-2 60532 'BLUE PETER' (dismantled under overhaul) and BR Std 4-6-2 70000 'BRITANNIA' Secure Compound: Bulleid MN 4-6-2 35022 'HOLLAND-AMERICA LINE' and 35027 'PORT LINE' (both dismantled stored)

Diesel: (24) 08737/762, 20189/205, 37190/606, 37608 'Andromeda', 43048 'T.C.B. Miller MBE' / 43423 'VALENTA 1972-2010', 47593 'Galloway Princess', 47614, 47712 'Lady Diana Spencer' / 47811/816, 47830 (D1645) 'BEECHING'S LEGACY', 47841 'Institution of Mechanical Engineers', 50049 'Defiance', 50050 'Fearless', D9016 'GORDON HIGHLANDER' (un-numbered/un-named) masquerading as DP2, 55019 'ROYAL HIGHLAND FUSILIER', 55022 (un-numbered/un-named), 56049 'Robin of Templecombe 1938-2013', 57301 'Goliath', 57307 'THUNDERBIRDS LADY PENELOPE', 66503 'The RAILWAY MAGAZINE', 67006 'Royal Sovereign', 68027 'Splendid', 70008/808

Electric: (8) 73001, 73951 'Malcolm Brinded', 73952 'Janis Kong', 86622, 88005 'Minerva', 90045, 91119 'Bounds Green INTERCITY Depot 1997-2017', 92038

DMU: (2) CI.121 55034, 142001

DEMU: (1) 221101 '101 SQUADRON'

EMU: (1) 319433

Coaches: Mk1 Pullman 310 'PEGASUS', Mk1 1658/1696/1863/1883/1954*/3045 'ALLISON' /3051/3060 'GWILI' / 6311/13227/17013/ 35317/451/467/465/511, 80043, 94434*/522/538, 99884/99933 'CLUB CAR', Mk1 GUV 93568/94170, Mk2 Pullman 1211 'SNAEFELL', 3188 'CADAIR IDRIS', 3223 'DIAMOND', 3229 'SNOWDON', 3231 'BEN CRUACHAN', 3240* 'SAPPHIRE', 3312 'HELVELLYN', 3344 'SCAFELL', 3348 'INGLEBOROUGH', 3384 'PEN-Y-GHENT', 3438 'BEN LOMOND', 5912 'CAR No.5912', 9479 'CAR No.9479', Mk3 10224, Inspection Saloon 999509, Collett 9004, Mk2 Test Cars (with 73/9s) 9523/977997/72631/975091, PCV 94335*/94336

Wagons: lowmac 904524/541/671*, LMS weltrol 360337*, flatrol 900411, YDA 967534*/581, YGB ?*



stock between carriage shed & WCML

above left to right: alongside carriage shed 3223 (part) second track 3051 + 3060 + 1696 + 999509 + PCV 94336 + warwell 360337 + lowmac 904671 centre lowmac 904541 + bolster 967534 + YGB ? adjacent WCML 6311, 10224 (part)

left from north end of carriage shed bolster 900411 (part) + 17013 + 1954 + 94434 + PCV 94335 + 3240 + 3223 + 99884

the latter two could be seen from the location above



above 08762 & 08737 in action shunting stock on the evening of the 7th June 2019
08737 has subsequently been repainted into BR green gaining its pre TOPS number of D3905



above 4-6-0 46100. below dismantled 60532, 8th June 2019





4-6-0 45231, 7th June 2019

right 4-6-2 70000, 66503, 67006, 43423 +
43048 on the western side of the carriage shed,
8th June 2019

below freshly painted 4-6-2 34046, 4-6-0 45231
& 221101 near the entrance, 8th June 2019



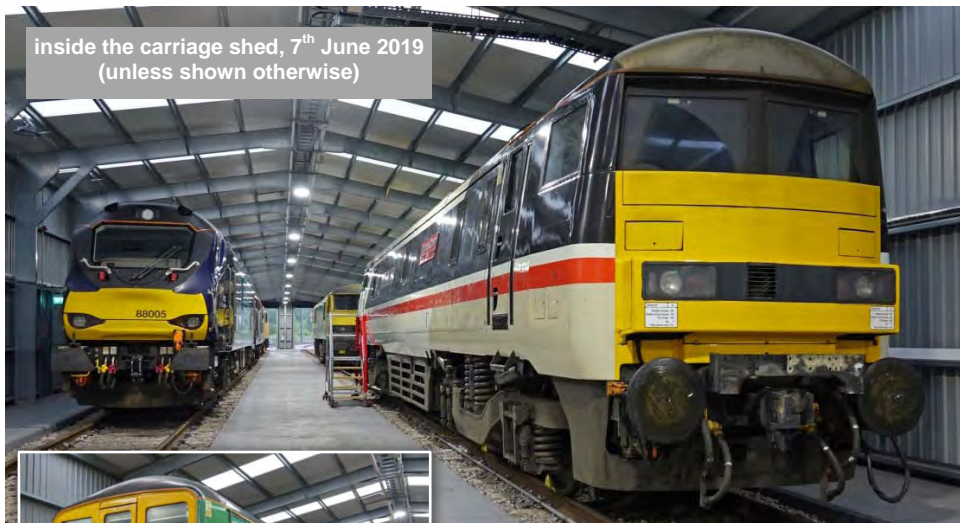


inside the works
above D9016 masquerading
as DP2
bottom 47712 & 4-6-0 5029

left 92038 was on display outside
the site alongside the WCML



inside the carriage shed, 7th June 2019
(unless shown otherwise)

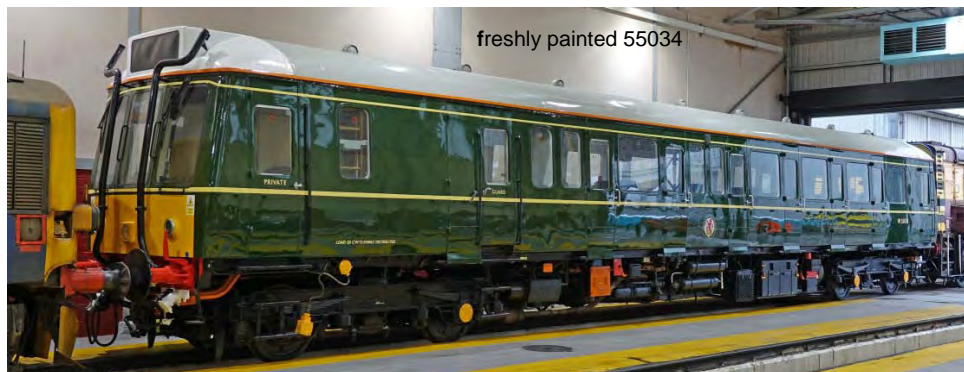


left 319433 8th June 2019, above 88005, 91119
below 90045, 47593, 37608, 88005
bottom left 73952 t&t 73951
bottom right 56049, 8th June 2019



Galloway Princess





freshly painted 55034



The Institution of Mechanical Engineers

inside the main shed, 7th June 2019
(unless shown otherwise)

left re-liveried & named 47841

below right 142001, 8th June 2019

below left 37606



un-named / un-numbered 55022

20189 + 20205 with new acquisitions 73001 & 37190 with the main shed behind, 8th June 2019



above 43423 + 43048
43423 is the fifth of the six ex-GC
Cl.43s to be illustrated in the revised
EMT livery though sadly they are to be
dispensed with by Abellio,
7th June 2019



68027, 70808 & 70008, 8th June 2019

dismantled Bulleid MNs 35027 (with boiler) & 35022, 7th June 2019



below Pullman First Bar 310,
7th June 2019



above restored Mk1 Generator Coach 6311,
7th June 2019
compare with photo on p16 July 2016

below 47813 & 47816 with Mk1 35467
behind 47813, 7th June 2019



LONG MARSTON VISIT REPORT

Attended by 115 members, the third visit to Long Marston coincided with preparations for the annual Rail Live show so meant a few track machines were on site that we would not have otherwise seen. It did mean negotiating barriers which had begun to be erected to keep show visitors from the stored stock but otherwise it was a fairly quiet day with little movement on site. The Vivarail sheds, which have expanded with the addition of a temporary structure and the taking over of the 'preservation' shed were shut as was the paintshop. The weather was reasonable with occasional light drizzle punctuated by a few very heavy downpours around lunchtime between 14.00 and 14.30. Having finally trekked round the eastern side I decided to stop for a break just after it started raining at 13.45 so timed it well but I think that saw off most members who had gone by the time I ventured back out into what became a fairly sunny afternoon punctuated by another brief shower, to do the western side. We finally left the site at 16.45.



With the need to accommodate the new arrivals of Mk3 HSTs and the removal of many wagons either for scrapping or conversion (JSAs to Eastleigh) most of the stock had moved around the site including the D78 stock. Even some of the locos in the compound had moved with all remaining non HST coaches now there along with several TDAs. Several CI.319s had recently left the site and in fact I couldn't confirm where they had gone in time for the Summer Edition of the Combine and Pocket Book.



Stock List: (numerical order by type)

Locos: (36) 01547 [308V] TH 4wDM, 01552 [167V] TH 0-6-0DH, 08578/653/701, 20016/81/88 (2017), 43053/056/069/070/078/079/087/091/159/193/197

Industrial: 5 [7161] HE 0-4-0DH, 7 (31) [6973] HE 0-6-0DH, 22 [D1231] EE 0-6-0DH, 28 [7279] HE 0-6-0DH, [8902] 'Emma' HE 0-6-0DH, [7003] 'Rachael' HE 0-6-0DH, 503 [6614] HE 0-6-0DH, [10279] RR 0-6-0DH, [7276] HE 0-6-0DH, [5395] GEC 0-6-0DH, 870 [509] AB 0-6-0DH, 871 [510] AB 0-6-0DH, 873 [512] 'JOHN BOY' AB 0-6-0DH, HO14 [10119] S 0-4-0DH, [160] Minilok 8w, (Q) Minilok 4w, WD 70047 [362] AB 0-4-0DM



above the compound with all 3 Cl.20s on view
together with 7 (31) [6973] HE 0-6-0DH (blue) & [7276] HE 0-6-0DH (red)

DMUs: (4) 51352/76, 977859 Cl.158 bodyshell

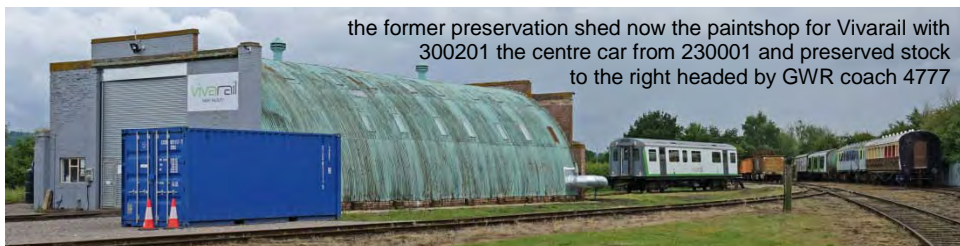
DEMs: (2 units) 230001 (centre car 300201 separate) /002 including centre car 300202 (ex 17091)

EMU: (10 units + 2 cars) Q (by paintshop), 71963, 319004/09/10/11, 319428/51/53-55, 799001

D78 Stock: (201) 7000-06/08/09/11/13-16/19-26/28-31/33-35/38/39/41-54/56/57/59-64/68/70-89/91-97/99, 7101/02/04-06/08-19/21/24-26/29, 7502-07/09/12-22/2425/28/30-39, 17003/11/13/15/20/21/23/25/29/35/36/43/45/47/49/50/52-56/58/59/62/6465/67-69/71/76-78/80/82-88/90/92/96/98, 17100/02-04/06/10/12-14/16-20/24/27/29, 17510/20/22/28

Missing presumed in closed sheds on site or at Spectrum Business Park, Seaham with one unidentified driving car visible in ex-Wagon Works

7017/55/65/90/98, 7103, 7501/10/29, 17063/66 nine of which are confirmed as part of next batch of 230s, 230006-10 (see new Summer Combine / Pocket Book for details)



the former preservation shed now the paintshop for Vivarail with
300201 the centre car from 230001 and preserved stock
to the right headed by GWR coach 4777

Coaches: (* underframe only) (126) Collett 4777 **Mk1:** 3746/3749/25735/34531/96181*

Mk2: 6722/17031 **Mk3 (hailed):** 10215/26/33/35/37/42/46, 11033/79/97, 12029/58/95, 12101/04/44/56/60/63/65 **Mk3 (HST):** 40101-19, 40801-04/06-11, 40901/03, 41059, 41108/49/61/62/69/76/82/83/86/87/89/92, 42108/15/66/69/73/78/95, 42217/32/33/47/94, 42303/05/08/19/21/53/81-83, 42518-20/83, 44060/74/78/91, 46006-09/12-14/16-18 **Mk3 Generator Cars:** 96372/73/75

Mk3 DVTs: 82116/20/37/38/41/48/50

Trams: (7) MM 1016/22/24/26 WMM 07/10/11

Wagons: (144) **JSA** 4021/29/33/36/40/42-44/46/47/51/53/54/57/63/65/66/69/76/99, **JTA** 26554/56/57, 26841, **JNA** 27003/13/14, **TTA** 60595/760/771/881, **TEA** 82204, 82751/53/54/56 **TDA** 86910-16/19/20/22/24/26-32/36/38-42/44/45/47-69, **TEA** 87483, **KFA** 92555, 92690, 95379/80/88

HHA 370252/54/63/67/68/74/76/80/82/83/85/87/88/90-92/96, 370300-02/04, **IWA** 33 80 2693 025-9, **IZA** 23 80 2929 129-7, **KFA** 33 70 4746 115-3, **IKA** 33 68 4909 580-5/723-1

TEA 83 70 7792 001-026, Brake van 68776

OTP: (15) **Tampers** DR 73120, 99 70 9908 018-3, Minima 2834

HOBC Vehicles DR 76502, DR 92331/32/59/60, DR 92703, **KFA OHL Wagon** 97304
Crane: (1) 34358 **Trolley:** (1) TNS 104 **Roadrailer:** 99 70 9911 342-2, KP63 JGZ, DX19 YJY

A diagrammatic plan showing exactly where everything is can be downloaded from the website which you will need to enlarge to view.

the varied stock on site, 319455, 230001
319009, TEA 82204, D78 7009
& HYA 370280



One of the interesting aspects of Rail Live was that we are able to see the two demonstrator units that were to be launched at the event from converted from CI.319s (see **TECHNOLOGY NEWS**).



230001 (300001) the opposite end to that shown on p14 in the Jul / Aug 2018 issue

Also seen were the 2 demonstrator Vivarail CI.230s of which 230001 had its centre car (300201) removed and 230002 which had gained a centre car 300202. 230001 is apparently being exported as a 2 car demonstrator to the USA, hence the removal of the centre car. The centre car of battery 230002 is fitted with diesel engines and has been added to provide driver training ahead of the delivery of the 3 car diesel / battery hybrid sets to TfW of which 230006 is nearing completion. Also seen in new livery was 7031 which is now a test vehicle.



under threatening skies 230002 (300102)
with new centre car 300202

TECHNOLOGY NEWS

Having already formed the basis for the CI.769 Bi-Mode / Tri-Mode Flex conversions 319001 has been converted to the first Hydrogen powered EMU, Tri-Mode HydroFLEX 799001. This operated under its own power during the Rail Live event at Long Marston on the 20th June 2019. Porterbrook has developed it in partnership with the Birmingham Centre for Railway Research & Education and will be tested on the mainline later in the year.



319454 Innovation Hub (77444 leading) & MSO power car 62968



MSO power car 62968 (319454)

right 799001 (77290 leading)
MSO power car 62891, note the grilles replacing
4 windows, Long Marston, 15th June 2019



319454 from this versatile class of EMU has also been converted to the Innovation Hub to test new ideas / technology from various companies. In parallel Eversholt Rail are developing their own hydrogen powered EMU based on CI.321s which will become surplus.

TOCs are now also responding to the push to develop and use stock using alternative fuel sources with Northern proposing to trial hydrogen powered vehicles on Tees Valley services from 2022.

4CIG MBSO 62364 based at BH is to become a battery traction testbed to allow EMU vehicles to be operated away from third rail supply.

ACCIDENTS

This is an occasional series devoted to showing the various mishaps / crashes that have befallen rolling stock in the UK over the years including current incidents. If you have photos and any accompanying info, then please forward to the Editor.

86211 (E3147):

Built in April 1966 it was named 'City of Milton Keynes' in May 1982. On the 19th September 1986 whilst hauling the 17.20 Liverpool Lime Street – London Euston it collided with the 17.00 London Euston – Manchester Piccadilly hauled by 86429 'The Times' at Colwich Jct near Rugeley. 86211 had passed a signal at danger protecting the up main and stopped straddling the junction. 86211 hit 86429 side on knocking both locos on to their sides and causing severe damage to both. Whilst both driver and trainee driver jumped clear of 86429 sadly Eric Goode the driver of 86211 was killed but there were no passenger fatalities. Both locos were withdrawn on the 4th November 1986 after movement to Crewe Works, where the nameplates were removed and both finally broken up on site in September 1987. Prior to being covered 86211 and showing the severe cab damage it was seen on its side by Malcolm Wallace in early 1987 (below) and later by Eddie Rathmill on the 4th July 1987 during an Open Day (above), by which time it had been righted and covered.

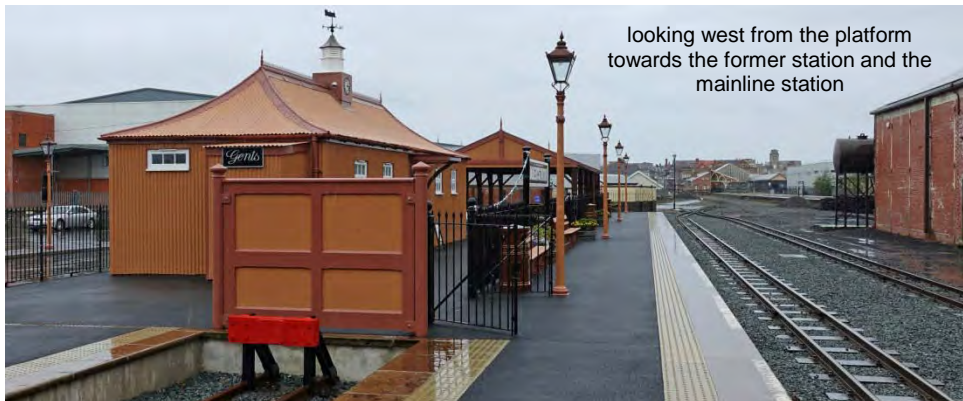


NARROW GAUGE MATTERS

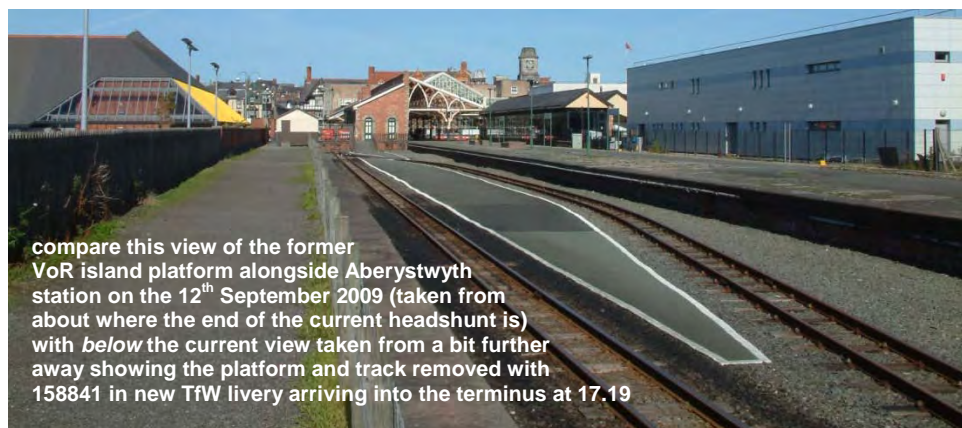
Vale of Rheidol Railway (VoR): The VoR opened its new terminus at Aberystwyth on the 6th June 2019 alongside the former GWR loco shed. The 'island' platform, one side of which forms a bay is about 200 yards east of the mainline station and former location. The photos below were taken on a wet 12th June 2019.



above looking east from the new platform towards the 2012 built shed with the new entrance / shop to the right of the bay platform and *below* looking west with 2-6-2ST 7 in the bay platform, which also acts as a shed headshunt, before moving onto the shed at the end of the day with to the right recently repainted Baguley Drewry 0-6-0DH 10 [002] about to move the stock from the last service into the old shed



looking west from the platform towards the former station and the mainline station



above all three ex-GWR / BR 2-6-2STs 8, 7 & 1213 (9) inside the new shed, the doors beyond lead into the workshop

PRESERVATION NEWS

Misc News:

On the 30th March 2019 Millers Dale station booking office re-opened to serve to cafe and visitor information centre for the adjacent Monsal Trail.

TRAFFIC & TRACTION NEWS

June 1

57605 t&t 57602 passed Ealing Broadway at 07.39 on 5A40 07.33 London Paddington - Reading Traincare Depot (photo at end)

June 6

59204 passed Harringay at 10.01 on Acton - Dagenham Dock (Eric Salisbury)



June 20

66780 newly named is seen at Ely at 15.11 2019 about to enter the goods loop with 4M86 17.02 Ely Papworth - Peak Forest empties running 121 minutes early (photo at end)

June 26

56091 + 56103 passed Eastleigh at 09.44 on 6Z90 Southampton Up Yard - Westbury (photo at end)

June 27

56096 + 56105 + 66743 passed Spittal, Berwick-upon-Tweed at 16.49 on 6S31 Doncaster Up Decoy - Millerhill (photo at end)

News from Norfolk (Stuart Moore):

The short set continues in operation despite the Cl.755s being cleared for operation. The driver training is continuing and a Cl.156 was recently damaged by a fallen tree.



above 37407 starting up with style with 37800, Norwich Yard (07.42) 6th June 2019 (Stuart Moore)

The expectation is that NC37 will be in operation until mid August but there are rumours that it could be into to October before it is taken out of use. In June the set was powered by 37405 and 37716 at the start of the month, with 37716 being replaced by 37407 (now Blackpool Tower once more). This combination was replaced when 37405 failed with 37424 giving a short period of 2 large logo 37s on the set again. 37424 was removed and replaced by 37419 giving the first run of the mainline liveried 37/4 on timetabled public trains since the repaint.



above 37716 Brundall (16.57) 6th June 2019 (Stuart Moore)



above 37407 t&t 37424 Acle (12.13) 22nd June 2019 (Stuart Moore)



above 37405 t&t 37407 on 2P58 1157 Norwich - Great Yarmouth, Brundall (12.07) 15th June 2019-07-14(Toby Radziszewski)

New unit arrivals continue on a weekly basis from Ripple Lane behind either 66001 or 66002:

06/06	745003 (66002)
13/06	745004 (66001)
20/06	745102 (66001)
27/06	755's (ID's not known)
02/07	755423/424/328 (66001)

The monthly gauging train (1Q98) Cambridge to Cambridge ran on the 27th June powered by 37099 t&t 37521. In addition there was the twice yearly run to North Norfolk and elsewhere in the region which ran on 2nd July to Norwich and then that evening to Colchester, returning to Norwich on the 4th before running to Derby. The operation was powered by 37521 t&t DBSO 9714.



above 37419, 37800 & 37608 Norwich Yard (14.15) 23rd June 2019 (Stuart Moore)

There have been several locomotive movements to and from Norwich in June. Having arrived on the last days of May in Norwich 37419 did nothing in the area before running light to Derby on the 5th. It was due to operate a snowplough move but this was cancelled. On the 6th 57003 arrived from Willesden and replaced 37407 which ran light return to London before continuing on to Ramsgate for the open day. Also on the 5th 37800 was seen running light into Norwich station from Crown Point before running light out presumably in relation to a new unit move. 57003 and 57002 were used to run the snowplough move from Derby to Tonbridge before running light to Norwich. 37419 arrived with the 57s

spending a little while in the Royal Dock sidings before beginning use on the NC37 diagrams. Both were then used on the NNR gala weekend 14-16th June. They later returned to Crewe with 37716, 37405 and 90008 on the 20th June. The 21st saw 68003 and 68016 arrive with Riviera stock for the NENTA tour to Edinburgh the next day. 68003 was showing signs of repairs with a new body panel clearly evident (no transfer over the base paint)



above 61306 arriving at Norwich (13.35) 4th July 2019 (Stuart Moore)

A further special train operated on 4th July when 4-6-0 61306 Mayflower t&t 33207 arrived on a tour from London Liverpool Street heading for the MNR. The tour arrived into Norwich approx on time and continued on to Dereham as planned however the return was not so successful and was an hour late leaving Norwich then failed at Ipswich. The 33 was removed at Ipswich and the tour stopped with passengers having to be taken to London by an alternative service. The 33 was collected the next day by 37516.



above 33207 obviously didn't like the wash Norwich (13.42) 4th July 2019 (Stuart Moore)



STOCK MOVES

With so many new stock moves occurring, particularly with various barrier wagons and transfers of stock between operators or into store, I thought it best to start showing these all together as this will become a regular sight over the next few years.





above 57312 hauling 313018 + 313046 to Sims Metals for scrapping on 5Q78 Hornsey - Cardiff Docks, Swindon (13.09) 17th June 2019 (Colin Pidgeon)



left 37884 hauling 313063 + 313062 to CF Booth for scrapping on 5Q25 Hornsey EMUD - CF Booth, St. Neots, (21.13) 20th June 2019 (Tony Brzosko)



66750 + 317669 on 5Q97 16.32 from Ilford EMUD, Ely North Jct (21.14) 22nd June 2019 (Toby Radziszewski)

above & right
Cl.317s into storage at Ely Papworth Sidings

right 66703 hauling 317663 on 5Q97 16.39 from Ilford EMUD, North Fen Drove (20.27) 29th June 2019 (Toby Radziszewski)





66735 hauling set BN29 with DVT 82231 on 5Z91 08.58 Bounds Green T&RSMD - Worksop Depot, Sandy (10.51) 13th May 2019 (Toby Radziszewski)
 66725 hauling set BN24 with DVT 82229 on 5Z91 09.00 Bounds Green T&RSMD - Worksop Depot, Arlesey (09.58) 29th June 2019 (Toby Radziszewski)



WD AUSTERITY 0-6-0ST LOCO SURVEY

*Though some have already been covered in **TRACKS** under various headings this series will endeavour to fully record the surviving Austerity 0-6-0STs (77) that survive from the 485 built. A versatile loco, they can be found on many preserved railways either working or in a dismantled state. The background to the class was covered in the October 2018 issue of **TRACKS** on p56.*

Note the total has risen from 75 first given, as I have established that two more survive in the Netherlands.

WD 75170 [2758]: Built in 1944 under contract by WG Bagnall it entered WD service as WD 75170 but was later sold to the NCB working in the Dulais Valley in which it still resides as a static exhibit in the car park to the Cefn Coed Mining Museum. It moved on the 27th August 1981 from the Graigola Merthyr Works sidings, Pontarddulais. The livery was originally a lighter green and red livery with the wording CEFN COED COLLIERY MUSEUM then in Welsh below AMGUEDDFA GLOFA CEFN COED. For some strange reason the information plate gives the works number as 3846 which doesn't relate to any surviving industrial steam loco.



PHOTO SPOT: RAIL TOURS

4-6-2 35018 t&t 47245 on Railway Touring Co 1Z93
The End of Southern Steam Weymouth - London
Victoria, Eastleigh
(20.54) 9th July 2019
(Chris Addoo)



4-6-2 60103 on Steam Dreams 1Z03 Cathedrals
Express 08.54 London Victoria - Salisbury,
Wandsworth Town (09.03) 1st June 2019
(Toby Radziszewski)



above 47727 + 47749 climb Belstead Bank on the outskirts of Ipswich on 5Z49 13.08 Ipswich Yard -
Burton Wetmore Sidings returning the stock from the previous days GBRF Staff Charter from Ipswich
- Scarborough, (13.17) 9th June 2019 (Keith Partlow)

INFRASTRUCTURE NEWS

Dyce – Inverurie Doubling: Following the re-doubling of the Dyce to Aberdeen line reported in several previous issues in 2018, the second phase of works to improve the Aberdeen to Inverness line commenced on the 4th May. This phase will last until the 19th August and has involved various sections of track being closed to enable the complete doubling of 10 miles of track between Dyce and Inverurie and the start of the rebuilding of a station at Kintore which is just 3 miles to the east of Inverurie. Kintore was the junction with the Alford Valley Railway branch to Alford which closed to passengers in 1950 though, Kintore didn't close until 1964. It is due to open in May 2020.



above looking south from Kirkton Drive towards Dyce station on the 9th July 2019 shows the remaining section of doubling still to be done, the lefthand track just beyond the signal box partially hidden on the left by the footbridge, but blocked by signalling equipment



looking north from the same location with an unidentified FL Cl.66 t&t 66557 (other side of bridge) standing on the former single track line with Raiths Farm Yard arrival / departure line to the left and the run round loop being removed, 19th May 2019 (David Robinson)
note the 3 unidentified FL Cl.66s with engineering trains in the Yard

below by the 9th July the run round loop has gone as has a lot of the stockpiled ballast with 66536 t&t 66504 in the Yard and Tamper DR 73110, which I believe is the same as seen by Dave, note the recently opened Aberdeen bypass in the background just beyond Dyce Drive



above looking south from Dyce Drive with Raiths Farm Yard on the right showing the finished doubling of the track, the lefthand track is new



above the site of the new Kintore station looking south just north of its original location with the former Alford branch to the rear of the site, where the track bears left, which then disappears under the adjacent A96 / A987 junction to the right of the photo, the lefthand track is new



above looking east from Inverurie station footbridge under the B9170 Old Meldrum Road and showing the last section of double track to be installed to connect the new lefthand track to the former loop line through platform 2, the point for which can still be seen on the former righthand single track

Misc News:

The new Meridian Water station opened on the 3rd June which has replaced the nearby Angel Road which closed on the 31st May.

The Newly re-aligned Market Harborough station opened on the 3rd June but platform 2 has yet to fully extended as it would have fouled the original track alignment.

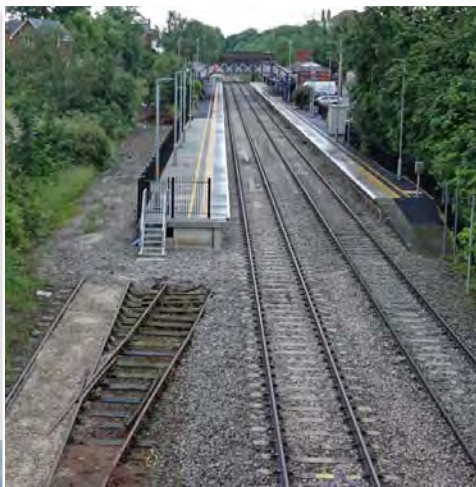


The other newly created secure storage facility in Tyne Yard has finally seen some use with a couple of unidentified LNER Cl.800/1 IETs, looking quite lonely tucked in the corner, with 325002 stabled outside the compound, 16th June 2019. The lefthand set is possibly 800112.

The Conwy Valley line closed since flooding caused severe damage through storm Gareth on the 16th March 2019 is still to re-open though the hope was that the northern part down to Llanrwst could be re-opened in time for the National Eisteddfod in August. The first photo below shows a deserted Llanrwst North showing rusty rails looking north with a roadrailer stabled alongside the signal box. The second photo below looks even more like a recently abandoned line but it is in fact Llanrwst, the second station in the town with just a simple short single platform. The third photo shows substantial repair works to the line just south of Llanrwst with the River Conwy the other side of the newly reinforced track. All photos were taken on the 10th June 2019.



Not previously reported, seven stations on the Oxford – Hereford route have had improvement works carried out in late 2018 including extending platforms to accommodate the new IETs. The stations are Hanborough, Charlbury, Kingham, Moreton-in-Marsh, Honeybourne, Evesham and Pershore. The photo right shows the finished work at Evesham looking from Briar Close where a siding has been severed by the eastbound platform and below Moreton-in-Marsh. At the latter location the westbound platform has been extended southwards past the signal box removing the former bay siding. A comparison can be made with the photo on the rear cover of the Summer 2018 issue which also shows a signal has been removed.



Moreton-in-Marsh showing extended northbound platform and the opposite northern side of the signal box to that shown in the Summer 2018 issue, with 802005 departing on the southbound 19.26 Great Malvern - London Paddington service, 14th June 2019



345023 with Mk4 coaches just visible behind, Worksop Depot, 16th June 2019

Following the report in the Jan / Feb 2019 issue the former DBC Wagon Repair Depot has been turned into a secure compound for off lease stored stock, currently CI.345s awaiting use and off lease Mk4 sets. HNRC has brought in 47715, now nameless, from WEN to provide power to the coaching sets and 08904 for shunting. In the photos above and opposite top taken on the 16th June 2019, prior to the arrival of the locos, two CI.345s, 345023/56 and one split Mk4 set can be seen with DVT 82216 (set BN25). Further CI.345s, 345057/58/61 and LNER sets BN23 (DVT 82226), BN24 (DVT 82229) and BN29 (DVT 82231) have since arrived (see **STOCK MOVES**).



above DVT 82116 and 345056
to the left of the photo on bottom of
previous page,
Worksop Depot, 16th June 2019



Further to the photo in the Jul /
Aug 2018 issue 66537 left is seen
running through the new loop at
Trimley at 16.08 with 4L41 06.04
Crewe BH - Felixstowe North on
the 5th June 2019 (Keith Partlow).

The new sidings created on the
MNR at Kimberley have received
their first stored CI.745/755s with
745002 & 755413 seen below on
the 16th June 2019 by Paul Baker
on a passing train.



OFF THE BEATEN TRACK

An occasional series on odd items of rolling stock found around the UK, not dumped or formally preserved, but in private use as part of a leisure facility, pub or holiday accommodation.

Tetbury Goods Shed:

The 7 mile long Tetbury line branched off the Swindon to Cheltenham line at Kemble. Opened on the 2nd December 1889 it closed on the 4th April 1964 with the track removed soon after. Following the demolition of the station and engine shed in the early 1970s only the goods shed remained. In 1995 BR planned to dispose of the remaining land including the goods shed by auction, which was stopped to allow Tetbury Town Council to come up with a plan to save it for community use involving HRH Prince Charles who lives nearby at Highgrove. In 1996 the land was sold to Feoffees, a charitable Tetbury organisation who steadily developed the land around the goods shed which was left until 2011 when it suffered a fire. This was the stimulus to not only repair it but then get the public involved and allow events to be held which highlighted its potential. Suffice to say after a large sum of money was spent the restored goods shed was officially opened by HRH Prince Charles on the 22nd December 2016 and is now an arts centre and cafe. It is to aid this latter use, open Wed – Sun 10.00-16.00, that a railway carriage was acquired from the closed Snibston Discovery Centre.



the Goods Shed and loading dock with the carriage alongside on the former trackbed which runs north south

The carriage is 22311 from Finland, the only one from that country in the UK. Leicestershire CC donated the carriage though the cost of getting to Tetbury and restoring it was around £15,000. It arrived on the 17th November 2017 and was officially opened on the 12th May 2018. One half is used as a cafe, called Whistle Stop, and the other as a craft workshop. The photo above shows the carriage alongside the goods shed on the 14th June 2019. It has been named 'MARY JANE'.



PRESERVATION PHOTO SPOT: STEAM I

Originally built for the Port Talbot Railway as 26 in 1900 by Hudswell Clarke it worked in Duffryn Yard Depot. Initially maintained by the GWR from 1908, following full absorption in 1922 it became 813. Sold to RSH it was then re-sold to Backworth Colliery in 1934 where it was re-numbered 12 then once under NCB ownership it became 11 in 1947 before withdrawal in 1967. Preservation beckoned immediately with the SVR where it has been based ever since, the last overhaul being in August 2016.



above 813 0-6-0PT being delivered to Beamish for the summer season following an appearance at the nearby Tanfield Railway, 17th June 2019

PRESERVATION GALAS

Ecclesbourne Valley Rly (EVR) Steam in the Valley by Trevor Roots:

The EVR held its Steam in the Valley over the weekend of the 15-16th June 2019. This was the first steam event held since opening of Duffield in 2011 and featured steam trains passing at Shottle for the first time in the lines history. Alongside resident Andrew Barclay 0-4-0ST industrials [2217] 'HENRY ELLISON' and 'BRIAN HARRISON' there were three visiting locos. These were Cl.14 D9537 on hire from ELR, L&Y Aspinall 0-6-0 52322 (completing a 2 month stay from RSR) and BR Std 2-6-0 78018 (from GCR). The 2 industrials took it in turns to conduct brake van trips with 950173 at Wirksworth or run up the incline to Ravenstor with Cl.108 DMU 53599.



above 33103 + D9537 arriving late into Wirksworth at 11.07 passing 2-6-0 78018 which was to take the next service back to Duffield,

right 33103 removing D9537 to the stock sidings

We called in on the Sunday on our way back from the Long Marston weekend so didn't know this event was on and didn't have time to stay long but apart from 52322 we saw all the other traction taking part at Wirksworth including the rescue of D9537 which had failed on the first service of the day from Duffield. 33103 'SWORDFISH' was called upon for the rescue.

The coaching stock in use was Mk1s 15849 + 3727 + 35006 + 24918. The second rake, not seen, included Cl.101 DMU trailer 59303 + 24984 + 34625 + 26157.





above [2217] 0-4-0ST + brake van 950173 awaiting its next run
 below [2360] 0-4-0ST + DMU 53599 descending from Ravenstor towards Wirksworth at 11.43



HOPE CEMENT WORKS OPEN DAY REPORT

1st Jun 2019 by Dave Spencer:

Although not a railway trip I thought I would go for the three HNRC Cl.20s based here and the hope of a trip on the branch. It was also an excuse to revisit Derbyshire, somewhere I used to love but like most of UK has been ignored for years. The car park was full and by all accounts well supported.

right 1704

To get there we had to cross a footbridge over the neck of the north end of the yard comprising eight tracks most of which were full of cement wagons. There were two locos tucked away among the wagons, Cl.20 82 (20066) in blue livery and a small diesel which I think was 5. The main entertainment area was the works social club with the display area beyond with in order of being seen a vintage coach giving lifts back to the station, two military vehicles, four vintage tractors, a steam traction engine and two giant earth moving vehicles.



left HNRC 08865

below 3 (20906)

below 82 (20066)



The railway exhibits were beyond this with Cl.20 2 (20168) 'SIR GEORGE EARLE', 08865 'GILLY', 1938 Hudswell Clarke 0-6-

OT 1704 'NUNLOW' set up for cab visits, which spent its entire working life at the works before being

retired to the Keighley and Worth Valley Railway (KWV) and LNWR 0-6-2T 1054. This was in steam and working when I arrived but remained stationary whilst I was there. Both steam locos were courtesy of KWV. There were also mini coach trips to the factory and the quarry but both had small coaches and long queues and I did not want to wait. On the way out the third Cl.20 3 (20906) appeared again not ideal for a photo. My hoped for branch trip was not on offer and the whole railway infrastructure was behind high wire fencing.

My day finished with an hour at Hope station and saw as expected, two Cl.185s on Cleethorpes services, four Cl.158s on Norwich services and a Cl.156 and Cl.150 on locals

PHOTO SPOT: NR TEST TRAINS



above 37025 t&t DBSO 9703 with 3M05 11.15 Dollands Moor Sidings - Deby RTC, Wandsworth Town (13.17) 2nd June 2019 (Tony Radziszewski)
below 37099 t&t 37521 on 1Q99 16.44 Cambridge Reception Roads - March Down Reception, Queen Adelaide (18.44) 28th June 2019 (Tony Radziszewski)



PRESERVATION PHOTO SPOT: FORGOTTEN LOCO



Out of the limelight for the best part of 20 years D7659 finally looks set to return to service in smart new two-tone livery as seen above in the workshop at Rowsley South, Peak Rail (PEA) on the 16th June 2019. D7659 (25309/25909) was bought by Pete Waterman in 1988 on withdrawal as 25909 and initially based at the ELR operating until 1998. It then was moved to Carnforth in 2007 to be restored to working order by a WCR employee but that never materialised. In fact it was at the 2008 Open Day that I saw the loco for the last time. In 2013 the loco moved to Washwood Heath in the care of DCR but again nothing happened and with the ending of a 10 year loan deal it moved to PEA in July 2017 where Pete Waterman's other locos are now based. D7659 has the honour of being the last loco to be built by Beyer Peacock in 1966 at the Gorton Works before it closed.

COACH MATTERS

Here is the last of the four types of Mk5 Caledonian sleeper coaches.



Seated Sleeping Car 15004, Euston
(07.23) 20th June 2019 (Derek Everson)

PRESERVATION PHOTO SPOT: STEAM 2

Showing the earlier similar chunky inside cylinder design by Hunslet that was to become the WD Austerity, 18 [1873] was built in 1937 for Guest Keen & Baldwins Iron & Steel Co and spent its working life at the East Moors Steelworks, Cardiff where it was numbered 18. It was withdrawn in 1965 and put on display in Splott Park Cardiff after being bought by the City of Cardiff but suffered from vandalism. So in 1979 it was sold and moved to the DFR at Norchard in February 1980 where due its good condition it was dismantled to be returned to service. The owner however moved to the LLR so the kit of parts moved with him in 1998 and finally steamed in December 2003 in maroon livery. Following a further overhaul in 2013 the loco was fitted with side tanks and painted blue so it could masquerade as Thomas the Tank Engine (this was not the first time though, see below). It was converted back for the second time to a saddle tank in 2019 gaining the identity and livery worn whilst working in the steelworks. The loco is now based at PON and has four years left on its boiler ticket. It is not known when it gained the name 'JESSIE'.



*above & below under overhaul and conversion from saddle tank to tank,
Llangollen, LLR, 14th March 2012*





left post conversion on the
8th June 2014
note it was carrying its name
on the smokebox at this time
but removed when seen
again in 2015

below & bottom right
sporting its new livery of
black & yellow warning
chevrons, Norchard, DFR,
13th June 2019



Not only is it a very nomadic loco visiting many different preserved lines when in steam it is also a bit of a Jekyll & Hyde loco in that it has been converted twice into a tank loco. The photo below left shows it at Bronwydd Arms, GWI in full 'Thomas' identity on the 6th September 2009. I actually reported it being at GWI in an article on the railway in the January 2010 issue. Remarkably by June 2010 there are photos of it in maroon back as saddle tank at LLR in which state it is seen opposite in the works 3 years later.



SIGNAL BOX SURVEY

Biggar: NT 0395 3725

Considering it has been closed since November 1966 this is a remarkable survivor and one of those privately owned boxes that has a B listing by Historic Environment Scotland. Located in South Lanarkshire on the Symington, Biggar & Broughton Railway it opened in November 1860 under Caledonian Railway ownership. Symington was the junction with the now WCML. The line was extended eastwards to join the NBR line at Peebles in 1864. The station was further enlarged in 1906 from when the box dates. It is a rare Caledonian Railway Type S4 that stands at the eastern end of the former eastbound platform of Biggar station which largely survives but in a very dilapidated state. There is only one other S4 in existence, the former Garnqueen South Jnct now at Bo'ness on the Bo'ness & Kinneil Railway. The station was bought from BR by JA Cuthbertson and though there was much interest in restoring the station it was later sold to Atlas Winch & Hoist Co who have restored the signal box and used it as an office. Access is off Station Road to the south of the town but being a private yard it is only open during business hours and permission must be sought if you wish to visit. Care must be taken as the access road passes through a very cluttered yard.



above
looking east
along
the partially
infilled trackbed
surrounded
by machinery

right
looking west
showing the
station beyond
the signal box,

both
10th May 2019



OUT & ABOUT

by James Holloway

*For clarity, steam locos are now shown in red. To be more helpful for those interested in where stock was exactly, can I ask all contributors who list trip sightings over long distances, to please add all locations when submitting to James. Please also ensure your sightings reach James a few days before the press deadline, see **SOCIETY NOTICE BOARD**...ed*

Sean Davies:

30th May Worcester Shrub Hill: 170505/17, 170630
800312, 802010, 802102
Oxford: 165113, 168110, 168324/27, 172101, 802106
802114
Hinksey Yard: 66186, 70809
Didcot Parkway: 66704, 800020
Reading: 08836, 57306, 57605, 66095, 165111/24
345035, 387130/39/40/46/63/65/68, 800313, 802002
Slough: 165135, 387136, 800018
Acton Main Line: 60019, 66001/21/74/79, 66113/61
66721
North Pole Depot: 800305/09/16/18, 802004/07, 802107
Paddington: 332006/08/09, 387141/54/58, 800012/21/28
800036, 800311/19, 802002, 802112
Waterloo: 159104, 444006/23, 450033, 450111, 450551
450565, 455701/06
Maidenhead: 345026, 387154
Twyford: 387165
Hayes: 66614
17th June Worcester: 66423, 88007
18th June Worcester: 47749, 68003/16, 800113, 800307
802022, 802115, 950001
19th June Worcester: 37402, 158953, 800028
26th June Worcester Shrub Hill: 153354/65/75, 165126
170117, 170502, 170635, 172003, 172333, 800313/17
Moreton In Marsh: 800318
Charlbury: 802019
Oxford: 802003
Hinksey Yard: 66186, 70811
Didcot: 08604, 66121
Reading Traincare Depot: 57306, 165129, 387130/31/39
387140/43/69
Reading: 57602/05, 59002, 59102-04, 59202/03, 66015
66113/19-21/25/44/68, 66420, 66522/37, 165103/05/09/10
165112/13/16/17/21/24/30/36, 166203/04, 220004/14/15
220025/27/28, 221122/30, 345030/37, 387133/37/38/41
387144-50/52/54-69/71-74, 450014/74/98, 458507/11-13
458515/16/19/26/28/33-35, 800006/08/09/11-14/16-18
800020-36, 800303/06/08/09/11-21, 802001-06/08/09/12
802013/15-19/22, 802102-06/08-14, 802206, DR73907

Stan Bown:

1st June Nottingham 06.15: 153318/68/72, 156404/70
158783, 158812/46/52/58/64/68, 170104, 221123, 222008
222011/12
Chesterfield: DR73118
Sheffield: 142090, 144008, 150108/44, 150220, 170459
222023, 222022

Hope: 66513, 66604/16

Manchester Piccadilly 08.30-10.15: 142004/07/14/29/44
142045, 150102/09/15/16/27/28/34/43, 150203/04/23/26
150259/71, 156421/23/40/52/55/86/88, 158799, 158813
158856/89, 175103/04/09/15, 185102/03/13/14/19/20/29
185131/33/46/51, 220011/13/16, 319362/67/70/72/73/76
319379/80/83/86, 323223-26/30/33/37/38, 350407/10
390006, 390119/29/35/56/57
Allerton: 195105/10/16, 319378/85, 323234
Edge Hill: 60002/85/87, 66710/79, DR73925, DR77907
Liverpool Lime St: 150105, 150228/35, 323231/32
350110, 390134
Wigan: 08703, DR98932/54/82
Preston 12.30-13.45: 142005/30/43/61, 150224/75
158752/56/57, 158849/71, 158910, 221118, 319361/68/75
319381, 390009/47, 390117/36/37/42/53, 350404
Bradford: 180112
Leeds 15.45-18.00: 43061/66/75, 91124/29, 142015/19/20
142050/78/79/86/89/91, 144003/13/17/21, 150103/18/24
150129/31/38/42, 150201/06/70, 153324/30/63/80, 158754
158758/59/84/86/89/92, 158817/43/44/50/60/69/70
158903/06, 170453/57/59/78, 185101/05/15/18/21-24/26
185128/30/32/34/37/42/44/45, 220006/27, 221122/26/36
221138, 321903, 322482-85, 333001-03/05-07/09/15
Wakefield: 153352, DR97507/807

Alan Jones:

3rd June Elgin: 158705
Inverness: 08528, 08648, 43136/41, 158703/06/09
170431, ADB965224/30
Aviemore: D3605, D5862, 66430
Kingussie: 43150/83
Pitlochry: 170434
Perth: 43163/82, 170415
Stirling 11.30-12.10: 43032, 385014/15/40/45, 385122
Haymarket: 43126/45/77, 170420, 334034
Edinburgh Waverley: 90042/43, 91108, 158733, 170394
170412/25, 385031, 385109/15/16
Craigentinny: 08472, 08596, 73966/67, 70801
cs 6346/94
Newcastle: 43238, 43305, 66745, 67013, 156481, 158843
221141
Tyne Yard: 800117
Darlington: DR97501/601/801
York: 09017, 66531, 68028, 170478, 185143
Doncaster 16.30-18.15: 08724, 43206/08/74/77/90, 43300
43302/06/14/15/17/20, 66781, 67004, 91107/19/21/22/31
142050/92, 144010/11, 170472, 185125/39, 321901/03
331102/07, 800108/10, ADB965576, ADB966098

4th June Doncaster 07.15-07.40/16.45-18.00: 43075
 43206/95, 43313, 66431, 66781, 67012, 70804, 91105/07
 91119/24/31, 142024, 144013, 170455/58, 180109/14
 185109/50, 321901/02, 331102/05/07, 769424, 800104/08
 800113, 800201/02, 801201
Sheffield: 66148, 142015/25/54/70/78/91, 144007/18
 150141/47, 158793, 158862/64, 158901/03, 185139/44
 220002/07/11/33, 221123, 222004/14/16, 180203/05
 106/08/09/12/13/15/18/20/22/23/25, 399203/05
Chesterfield: DR75302
Derby 14.45-15.15: 43484, 153381/83, 170105/11/13/17
 170398, 170522, 220017/21, 221125/33, 222002/03/05/13
Derby RTC: 08417, 08588, 37025, 37403/23/25, 43014
 57310, 67023/27, 73951/52, DVT's 82124/29/45, DR79234
 DR79235, ADB965211/37, cs 1256, 5981. 6261, 6398
 92114, 977769/93/95, 999550
Derby Bombardier: D3682, 08602, 20901, 66787, 710111
Beeston: DR75405, DR80209/14
Nottingham 10.30-11.00/12.30-13.10: 43047/50, 43480
 153311/68, 156401/13-15/70/73/97/98, 158770/83/85/96
 158812/15/48/64, 170105/13, 170639, 222008/10, 222104
 180109/11-14, 700105/17/12/16/22/32/38, 800102/04/10
 800113, 99-70-9515-002-2, cs 5981, 6264, 977686/983
Newark: DR75401
Doncaster 14.50-17.30: 37402+975025, 43010/20/23/75
 43295, 43300/02, 66590, 66702/10/25/55/70/81, 70804
 91102/21/25/27, 142021/67/70/91, 144007/10/11/13
 150117/24, 150268, 153373/84, 158849, 170456/61
 180106/11/14, 185121/35/39/42/44, 220005/06/17, 221120
 221138, 322485, 802202
6th June Doncaster 08.30-09.10: 66431, 67004, 70817
 91105/07/20/31, 142078, 144002/11/12, 150128, 170460
 180113, 220031, 321901, 331102/05, 800201/02
York: 158817, 185101
Darlington: 91102, 142023
Newcastle: 67016, 91127, 156491, 156514, 158845
 185117, 220007, 221133
Heaton: 802203
Craigminty: 67002
Edinburgh Waverley 12.00-13.30: 43129, 90042/45
 91130, 158723, 170393, 170402/10/18/20/26/37/50/51

334001/05/16/30/32/38/40, 380101/03, 385009/18/25/26
 385029/30/33/34/37/40, 385105/08/09/11/12/20/24
 390152
Haymarket: 43152/64/68, 158727/33/40/41, 170401/14/31
 170470, 385122
Perth: 158708
Blair Atholl: 66430
Aviemore: 46512, D3605, 170413
Inverness: 08523, 08648, 43135/47/49, 67015, 158705/15
Nairn: 158719
12th June Inverness 12.30: 158701/02/12/17/19/20
 170408
19th June Dunkeld: DR98911/61
Carlisle Kingmoor 11.30: 37218/59, 57303/11, 66302
 66433, 68002/18/33
Toton 14.00: 60004/08/11/14/18/20/54/61/63/65/71/90/98
 66034/61/66/74, 66102/22/26/38/43/62, 66525/36, 66724
 67003/07/19
Brush Loughborough: 769434
21st June Bescot: 66724
Carnforth 09.30: 37676, 37712, 47851, 57001, 57316
 57601, 86259, 144002, 158902
23rd June Newtonmore 13.40: 158707, 170396, 170470

Brian Derricote:
11th June Westbury: 43005, 43158, 59004, 66060/83
 66161, 66618, 66848, 70805, 158798, 158952/53/56/61
 159005, 165118/20/31/34/37, 166202/05/12/14-17/19
 800001/12/18/33/34, 800315/16

Mike Rumens:
1st May Nuneaton: 66158/60/72, 66518/72, 66760, 70802
 90028/40, 350102/09/19, 350369
2nd May Nuneaton: 66518, 66621, 70802, 90028/40
 319429, 350105/15, 350257
6th May Nuneaton: 66050, 66547, 350103, 350238
9th May Nuneaton: 44871, 57003, 66018/67, 66536
 66708, 66847
11th May Nuneaton: 66076
13th May Nuneaton: 47815, 66951, 70806, 90018/28
 350113, 350258, DR73909/36
14th May Nuneaton: 70806, 90018/28, 350232
15th May Nuneaton: 66115/30, 66518, 70806, 90018/28
 90041/48, 350110, DR73906
16th May Nuneaton: 66723, 70806
18th May Nuneaton: 66094, 66200, 66520/42, 66721/22
 88001, 90042/45, 350102
21st May Nuneaton: 66018, 70802, 350117, 350373
22nd May Nuneaton: 57307, 66422
28th May Nuneaton: 66018, 70802, 90018/48, 172003
 350109/16

Alan Knox:
21st May Eastleigh 09.50-16.55: 08460, 08511, 57302
 60021, 66716, 66848-50, 70811, 73002
 10.20 66004 4M71 Southampton- Birch Coppice
 10.55 66161 6M48 Southampton- Halewood
 11.00 59203 7Z52 Southampton-Westbury

11.30 70020 4005 Birch Coppice-Southampton
 12.05 66005 4043 Wakefield-Southampton
 12.40 70015 4014 Crewe-Southampton
 12.50 66069 4039 Cowley-Southampton
 12.55 66739 Eastleigh-Westbury
 13.20 70006 4M61 Southampton-Trafford Park
 13.35 70007 4090 Leeds- Southampton
 14.35 66716 6V40 Eastleigh-Westbury
 14.45 66509 4049 Crewe-Southampton
 14.50 66846 6V41 Eastleigh-Westbury
 16.05 66706 4Y19 Mountfield-Southampton
 16.06 66142 Birch Coppice-Southampton
 16.53 66005 4E68 Southampton-Wakefield
28th May Fareham 08.10-08.20: 158955, 377162
Northam Depot: 444045
Southampton Central 08.45-09.18: 158958, 166214
 444006/28/37
 09.14 66415 4M15 Southampton-Lawley St
Southampton Airport: 450564
Reading 10.10-16.20: 165102/03/07/10/11/14/16/17/23/35
 166201/03/14/16, 387133-35/38/41/43/44/47/50/52/57/59
 387164/65/68/70/72/74, 450025/32/72, 455864, 455908
 458511/14/17/19/24/27/36, 800003/04/09/11/12/14/15
 800017-22/25-27/30/32, 800301-03/05/06/08-10/12-14
 800316-21, 802001-07/09/12/14/15-19/21, 802103/04
 802106-10/12-14
 10.46 59204 Merehead-Acton
 11.25 66518 Southampton-Garston
 12.50 66607 Theale-Hope
 13.25 66718 6V32 Tilbury-Troste
 13.35 59206 Acton-Merehead
 13.55 37409 Norwich-Cardiff
 14.25 59205 Allington-Whatley
 15.28 Acton-Whatley
 15.44 Appleford-Barking
Basingstoke: 159004-06/18-21, 159108, 220015, 221118
 221125, 444008/13/25/28/29/39-41/44, 450008/10/16/17
 450025/79/87, 450100/04/13/20/22/25, 450544/45/54/65
 450569
 17.16 66716 Hoo Jct-Eastleigh
 17.21 66005 4E68 Southampton-Wakefield
Eastleigh: 08460, 08511, 47818, 60021, 70807/09, 73002
 158880/86, 221132/33, 444001/03/09/11/18/27/30/38
 450024/96, 450544/53/64
 18.15 66018 6O42 Halewood-Southampton
 18.49 66524 4O57 Wentloog-Southampton
4th June Fareham 07.15-07.30: 59104, 158959, 450005
 450038/91/96
Southampton Central 08.09-09.20: 450007/37
Eastleigh 08.30/18.55: 08460, 08511, 08632, 60021
 66606, 66789, 66850, 73002, 73967
Basingstoke 08.45/18.12-18.24: 220016, 444004/20/25
 450002/04/87, 450127, 450555
Reading: 08836, 57306/12, 57604, 345010/36, 387130/40
Didcot 09.21-16.48: 165101-03/07/12/16/23/30, 220009
 220012/15/18/21/27/30/33, 221123/30/36/37/41, 387130
 387133/34/36/38/40/41/46/51/52/54-57/59/61-66/68-72
 800006-14/16-22/24-36, 800301-03/06-10/12-16/18-21

802006/07/10/21, 802101/02/07-13
 09.30 66005 4043 Wakefield-Southampton
 10.06 66545 4005 Birch Coppice-Southampton
 10.12 70007 4014 Garston-Southampton
 10.20 66716 6M26 Eastleigh-Mountsorrel
 10.42 66955 4O18 Southampton-Lawley St
 10.45 66569 4L36 Wentloog-Felixstowe
 10.55 66506 4V31 London Gateway-Bristol
 10.58 70809 6O26 Hinksey-Eastleigh
 11.15 66186 4O39 Cowley-Southampton
 11.58 66572 4O90 Leeds-Southampton
 12.16 66017 4M71 Southampton-Birch Coppice
 12.18 66544 6A10 East Usk-Hayes
 12.30 66572 4L38 Wentloog-Felixstowe
 13.10 66050 6M48 Southampton-Halewood
 13.32 66563 4O49 Crewe-Southampton
 13.40 70811 6M40 Westbury-Stud Farm
 14.10 66197 Didcot-Appleford
 14.22 66610 6B35 Hayes-Stoke Gifford
 14.32 66142 6O21 Trafford Park-Southampton
 14.40 66551 6M41 Southampton-Trafford Park
 15.11 70809 6V27 Eastleigh-Hinksey
 15.20 66197 6L02 Appleford-Barking
 16.06 66538 4M65 Southampton-Lawley St
 16.28 66528 4O67 Wentloog-Southampton
 16.37 66018 6O42 Halewood-Southampton
11th June Fareham 07.45-08.05/18.30: 73964/65, 158950
 377112, 377456, 450119, 450544/65
Eastleigh: 07007, 08460, 08511, 08632, 47818, 60021
 66519, 66849, 70816, 73002, 73133, 73967
 08.30 66512 4O18 Lawley St-Southampton
 08.50 66789 Eastleigh-Mountsorrel
 09.10 66760 Eastleigh-Hoo Jcn
 09.35 66587 4M35 Southampton-Lawley St
 10.22 66017 4M71 Southampton-Birch Coppice
 10.30 66505 Southampton-Ashford
 10.40 73964/65 Eastleigh-Guildford
 11.00 66197 6M48 Southampton-Halewood
 11.30 66568 4O05 Birch Coppice-Southampton
 12.15 70809/04 6O26 Hinksey-Eastleigh
 12.40 70006 4O14 Garston-Southampton
 12.50 66098 4O39 Cowley-Southampton
 13.20 70809 Eastleigh-Hinksey
 13.22 70005 4O90 Leeds-Southampton
 13.35 66005 4O43 Wakefield-Southampton
 15.00 66003 7Z52 Southampton-Whatley
 16.04 800106 5X41 Acton-Eastleigh
 16.20 66005 4E68 Southampton-Wakefield
 16.25 66717 4Y19 Mountfield-Southampton
 16.35 66142 4O21 Trafford Park-Southampton
 17.30 66568 4M99 Southampton-Trafford Park
 17.55 66516 4O57 Wentloog-Southampton
 18.01 66098 4V39 Southampton-Halewood

Derek Place:

12th June Brockenhurst 07.00-07.30: 444007/07/10/16
 444024/35, 450076, 450560
Southampton: 66415, 66512/15/59/85, 158798, 220010

220017, 444001/21
Eastleigh: 08460, 60021, 66017, 66760, 66849, 70804
 450038/81/91
Basingstoke: 159010, 159104, 165109, 450024, 450102
 450123
Woking: 59004, 450018, 450111
Clapham Jnct: 377101/46, 377435/53, 377622
 442410, 450029/95, 450547/55/56, 707003/05/14/22/28
St Pancras 10.00: 373220, 374009/15/17/24
King's Cross 10.10-10.30: 91107/17/26/28, 313048
 365524, 387108, 700013/25
Hornsey/Ferne Park: 43320, 365511, 700014/26, 700134
 717004/07/08/11/18
Peterborough: 66522/26, 66732/58/83, 67002, 387122/29
 700020, 700108/15/23
Grantham: 153379, 156415
Doncaster: 08724, 66416, 66536/97, 66736/62/68/76
 331102/05/07, 801103/05
Leeds 12.45-17.15: 60015, 66763/70, 91102/05/20/21
 142007/16/19/29/48/64/70, 144003/07-09/11/15/17/23
 150103/08/14/16/28/31/35/42, 150204/22/23/72, 153315
 153328/30/32/59/63/73/80, 156424/47, 158752/54-56/84
 158786/87/89/90/93-97, 158848/49/51/59-61/70/71
 158901-04/06, 170454-56/58/72-74/78, 185101/03-05
 185107-10/12/13/16/17/19/20/22/24/26/27/29/30/32/34-36
 185138-41/43/45/46/48-51, 220003/06/33, 221122/29/38
 321901/03, 322481-85, 333001/03-05/07/09-13/15/16
 800103/13
Bounds Green: 801201
Waterloo: 707011/20

Michael Warrick:

30th June Felixstowe Docks: 08531, 08691, 08757
 66502, 66740
2nd July Peterborough: 43206/08/38/57/72/77, 43302
 43308-10/12-20/67, 66051/63, 66128/82/88, 66509/47
 66705/15/23/40/42/55/65/70/73/82/87, 67002/04, 91105/06
 91108-10/12/15/19/24/27/28/31/32, 700103/07/11/32/37
 700138/51-53, 800102/06-08/10-12

Barrington Francis:

21st June Cardiff Central: 37421, 66749, 142069/73/74
 142080/85, 143605/0910/22/23/25, 150202/08/13/30/31
 150243/45/67/77/80/83/84, 153327/69, 158830, 158961
 170111, 170522, 175007, 175102/15, 800007/19/34
22nd June Cardiff Central: 60019/92, 66165/75, 66749
 142002/06/10/69/72-74/77/80/82/83, 143602/04/06-10/14
 143616/18/22, 150202/08/13/27/31/35/42/45/51/53/59/77
 150279/81-83, 153323/27/29/33/67/69, 158951-53/58
 166202/12/21, 170116, 170523, 175010, 175103/06/09/13
 800004/06/08/14/17/18/20/21/27, 800301/310, 802113
Cardiff Canton: 37610, 769002, DR73105

Paul Rosser:

3rd July Manchester Airport 07.50-10.26: 185102/03/05
 185107/18/26/33/46/47/50, 195102/14/16/18/19, 323226
 323228/36, 350401/05
Gatley: 66050, 66142

Bradley Marshall:

27th June Yeovil Pen Mill: 159017, 159103, 166217
Castle Cary: 158880, 800317
Westbury 07.00-12.37: 56091, 56103, 59002/04, 59104
 66013/83, 66170, 66554, 70805, 150202/47, 158880/84/90
 158950/53-55/58/59/61, 159002/11/20/21, 159106
 165118/19/27/29/31/37, 166205/08/13-16/18/20, 800309
 800313/77, 802004/18, 802102/10/12/14
2nd July Yeovil Jnct: 158881, 159006/08-10/12/17
 159021, 159104/06/07

Martin Willcock:

27th June Brighton 10.40-11.15: 313203/06/10/14
 377102/15/26/39, 377434, 387211/14/15/25, 700101/28

Geoff Hope:

31st May Manchester Victoria 10.15-13.15: 66725
 142003/09/14/19/28/31/35-37/41/43/48/55/61/62/79
 150107/10/11/13/16/20/25-27/31/41/44/46, 150201/06/09
 150211/15/18/22/25/28/69/72, 153301/07/58/78/80
 156423/27/55/66/80, 158793, 158844/49, 158901, 185104
 185107/09/12/13/23/25/26/29/34/42/44-48, 319382
Manchester Piccadilly 13.45-17.15: 66529, 66712, 67014
 70005/07, 142007/14/28/29/33/39/44-46/51/53/61, 150101
 150103/06/09/12/15/17-20/23-25/28/29/32/33/36/39/43/47
 150150, 150204/18/23/24/26/71/75, 156404/21/25/52/70
 156488, 158756/57/70/80/99, 158806/10/34/52/56/57/62
 158866, 175008, 175102/04/08/14/15, 185103/05/10/11
 185113/18/19/21/25/29-32/35-37/41/43/46/48/50/51
 220011/17-19/31, 221120/30/38, 319362/67/70/73/76
 319378-81/83/84/86, 323223-26/29-32/34-38, 350402/05
 350406/09, 390005/11/47, 390117/21/27/31/37/38/41/52
 390153, DVT 82308, cs 12177/82/83/85
14th June Birmingham Moor St 11.10-13.25: 68011/13
 153356/71, 165026, 170506, 172001/02/04/08, 172211/12
 172217/19/22, 172331-33/35-42/44/45, DVT's 82302/03
 cs 10272/73, 12602-04/13/15/17/18/21/23/25
Birmingham New St 13.35-18.35: 43207, 43321/78/84
 153354/65/66/75, 158818-21/24/27/30/31/34/37/39
 170101/03/05/08/09/12/13/16, 170397/98, 170502-05
 170507-14/17/21/23, 170630/32-34/37/39, 220002/03/06
 220007/11/13/14/16-23/30-32/34, 221105/08/10/12/17/18
 221120-22/24/27/30/31/34/36/38/40/42, 323201-09/11-16
 323218-20/22/40/41/43, 350103/04/07/08/10/12/14/16/21
 350126/29, 350234/39/42-44/48/49/52/54-57/59/61/62/65
 350266, 350371/72, 390002/06/13/39/43/44, 390103/12/54
 390157
21st June Stafford 10.25-17.25: 57002, 66070, 66125/42
 66221, 66423, 66505/09/19/28/31/42/70/99, 66706/72
 68009, 70003, 350105/08/19-22/24/25/29/30, 350231/33
 350235/36/39/40/42/44/46-48/51/52/54-56/59/60/62/64/65
 350370-77, 390001/02/05/06/08-11/39/43/45/46/50
 390103/04/07/14/15/18/21-27/29/30/32/34/37/41/48/51-57
 DR73113
3rd July Manchester Piccadilly 10.00: 150105
Birmingham Moor St 12.00-14.15: 153354/56, 170516
 172001/03/07/08, 172212/13/15/17-20/22, 172331-33
 172335-39/41-45

Birmingham New St 14.25-18.25: 43207, 43366, 150217
153334/71, 158819/21/22/24/29/33/41, 170101-03/05
170107-12/14/15, 170398, 170502/03/09-11/18/19/21-23
170630/32/36, 220003/04/08/12/13/15/17/19/21-23/25/30
220033/34, 221101/04/07/12/14/17/20/22-27/30-32/38-40
221142, 323202-06/08/10-14/16-22/40-43, 350102/03

Ian McAlpine:

1st June Peterborough: 43238
66724/27/77/86/89, 91121, 180114
387113, 700134, 800102, DVT 82205
DR73109
Doncaster: 66051, 66101/76/98
66712/60, 331102, 800102
York: 43208/74, 68028/32, 91125
170457/76, 180102, 185104/28/34/
185140/45/49, DVTs 82200/17
7th June Peterborough:
66724/25/60/66/77, 91124, 700106/10
800102/04, DVT 82201, DR73109
Doncaster: 56078, 66769, 70804
331102/05/07
York: 68032
Darlington: DR97501/601/801
8th June Darlington: 57601, 221126
Neville Hill: 08690, 170459
Leeds: 150143, 170473/74, 185129
333013, 800110
Shipley: 333012
9th June Darlington: 185140/41/46
York: 90019, 170472
Doncaster: 56087/96, 66702/54/65
331107, 800104, DR75401
Peterborough: 66093, 66703/19/55/66
14th June Peterborough: 66501,
66719/83, 90019, 91109/14, 158866
180105/12, 700142/50, 800110
Doncaster: 66768, 331105
Leeds: 150126, 185141
Edge Hill: 66777
Liverpool Lime St: 507018
16th June Liverpool Lime St:
185137/38, 319366/80, 390047
Edge Hill: 66731
Manchester Victoria: 319362
Leeds: 800102
Neville Hill: 08690
Doncaster: 66047, 66182, 66706/74
28th June Peterborough: 66707/32/59
66780, 91130, 700108/09, 800103/13
Doncaster: 331102/06
Leeds: 158861, 185136
Manchester Victoria: 150118, trams
3013/28/33/35/48/58/64/73/87
Liverpool Lime St: 507009
30th June Liverpool Lime St: 185108
Leeds: 800105/08
Peterborough: 66063, 66707/51

350111-14/21/22/24/27, 350232/37/39/43/47/53/54/56
350259-63/65/66, 350370/73/74/77, 390005/06/08/09/13
390039/44/47, 390103/17/31/35/56
Soho Depot: 323201/07/09/15
Stafford: DR79501-07

Colin Tarrant:

15th May Leamington Spa:
66002, 67002
Hinksey: 70816
Reading: 08836, 57602/04
Eastleigh: 08511, 66142, 66846/48-50
Eastleigh Works: 07007, 73002,
73119/33, 73213
Southampton Docks: 66069
Southampton FLT: 08585
66512/58/62/97, 66703, 70007
16th May Southampton FLT:
66509/18/23/97
Westbury: 43093, 43188, 66015
66113/37/74, 70805/07
Exeter: 43009/22/93, 43156/185/207
43378, 66030
Eastleigh: 66506/31/58, 66779
66846/48-50, 70806
17th May Eastleigh: 66592, 66848-50
70816
Westbury: 59104, 66174, 70805-07
Bristol: 08516, 43041/86, 43122/89
Cardiff: 50050, 66089, 66183, 70813
Newport: 66099, 66198, 66524/42
Gloucester Yard: 66789
18th May Wigan: 08703
Warrington: 60010, 66100/61, 67029
Rugby: 57307, 66125
Wembley: 37608, 57305, 66097
66128/75, 68014, 70002
West Hampstead: 43050/89
Gospel Oak: 66076
Temple Mills: 08948
Stratford: 66518/49, 66765, 90002
Bow: 66127
Acton: 60019, 66009/15/26/73, 66102
66127/37
Wembley: 66175, 66534/49/71
20th May Doncaster: 08724, 43155
66099, 66136, 66419
66730/40/55/62, 70817
Peterborough: 66769/71/80
Boston: 37521, 37610
Sleaford: 60062
Nottingham: 37025
21st May Skipton: 66757/83
Derby: 20901/05, 66767
Nuneaton: 66142, 66509
Rugby: 66524, 86259
Daventry: 66534, 90016/45

Northampton: 66119
Lawley St: 66528/55
Kingsbury: 66721
Burton: 20901/05, 66767
Derby RVEL: 08588, 37099/402
37419/25, 37605, 73138
Chesterfield: 66601
Doncaster: 66701/09/20/25
29th May A V Dawson
Middlesbrough: 08600, 08774, 08912
Wolsingham: 08308, 08750/809/70/85
31106, 31459
Leeming Bar: 60163, 01544, 33035
37250, 47715
1st June Gresty Bridge Crewe:
37038, 37606, 57307, 68002/17/23
Crewe LNWR:
56049, 397003/04, 710103
Basford Hall: 66737
Stafford: 47501, 66078/83, 66502/14,
70007
Warrington: 66185
Ditton: 66415
Widnes: 08454, 08721
Halewood: 08818, 66131, 66745

Michael Hayman:

1st June Euston: 66079/83, 87002
92010/14
Paddington: 43002, 43198
Victoria: 60103, 47245

Rich Barlow:

6th May Toton: 47749, 55019, 60011
60017/20/34/45/54/74, 66023/39/43
66065/70/80, 66101/17/28/38/39/55,
66540, 66619, 66722/57/78, 67002
67005/30, 68033
14th May Crewe: 08737
Stafford: 66547
Birmingham Moor St: 68014
Aynho Jct: 66568
Wembley: 68011
Liverpool St: 90002/11/13
Stratford: 66127
Ipswich: 66504/56, 66605
Norwich: 37405/23, 37716, 37800
66125, 90005/12/13
15th May Norwich: 90001/04/05/10-13
90015
16th May Norwich: 90015

Ipswich: 66592, 66953
Stratford: 08871, 66127
Marylebone: 68012
Wembley: 68008/09/14
19th May Perth: 43015, 43181
Dunkeld: 43129
Gleneagles: 43021/26
21st May Perth: 43150/83

Dundee: 43164/82, 43290, 43309
Haymarket: 43132/36/48/77
Edinburgh Waverley: 43139/43/46
90044, 91120/24
Craigentinny: 73967/71, 92038
Oxwellmains: 70810
Berwick: 91102
1st June Derby: 08417, 37521, 37605

43049, 43303/04, 57310, 73138
73951/52
Nottingham: 43043/54
Loughborough: 43046/50/82/89
East Midland Parkway: 43047/59,
43465/68, 37611

PRESERVATION PHOTO SPOT: DIESEL



above back together working again, alongside D7017, D7018 is finally back in service after a 23 year long restoration which saw it move under its own power in late 2018 after suffering a major engine failure in 1995, Minehead, WSR (15.45) 21st June 2019 (Spencer Conquest)

PRESERVATION PHOTO SPOT: IN WORKS



DRC based 1466 0-6-0T
undergoing overhaul at
Norchard, DFR
13th June 2019

LIGHT RAIL, METRO & UNDERGROUND NEWS

Manchester Metrolink by Geoff Hope:

June 2019: The beginning of June saw the final canopies in place at the Imperial War Museum tram stop on the Trafford Park line. Poles for the Overhead Lines have appeared between the Trafford Centre, Event City, Parkway and Village tram stop. At the other end of the Trafford Park line, Crumpsall is also taking shape with track laid into the bay platform, which is capable of stabling a double tram beyond the platform utilizing the unused arch under Crumpsall Lane with a double tram in service if required. The crossover and turnout was laid over the Easter weekend. At the start of July it appeared the finishing touches were being made to complete the connection to the network at Pomona. The number of journeys has more than doubled from 19.2 million at the start of the decade rising to 43.7 million as of year ending March 2019.

On the 7th June a member of the public left a rucksack on a tram travelling to Bury containing an assortment of drugs including scales. The owner left his Community Pay Back card and name and address. On the 12th June a Shaw bound tram revealed a couple looking worse for wear on CCTV. The female appears with a crack pipe in her mouth holding a cigarette lighter and the male slumped on his seat then walking into the side of the tram when alighting. It was noticed when they left the tram a pungent and acrid smell lingered.. On the 26th June tram surfing while on the mobile phone appears to be the new craze on the Rochdale line. As PCSOs do not have the power to make arrests, 50 dedicated neighbourhood police officers will replace them later in the year as it is believed there is a need for harder enforcement and arrests to be made.



MM 3099
above yellow side, St Peters Sq,
Manchester 24th June 2019
(Geoff Hope)
left black side, Manchester Airport
(12.22) 8th July 2019 (Paul Rosser)

Tram 3066 is now advertising the Clean Air Greater Manchester campaign along with. Tram 3099 is in yellow livery on one side and black livery on the other side advertising GYMSHARK, a fitness and accessories brand. Trams 3094 and 3116 have lost

advertisements Olivia Burton London and Cheshire Oaks Designer Outlet respectively.

Observations at Cornbrook 26th June 08.45-10.55: (103 trams in service)

Altrincham – Bury: 3001+3019, 3002+3051, 3003+3043, 3006+3015, 3009+3046, 3013+3048, 3017+3021, 3028+3052, 3033+3035, 3036+3038, 3055+3059

Altrincham – Piccadilly: 3007+3037, 3024+3049, 3040, 3041, 3044, 3057, 3060

East Didsbury - Shaw / Rochdale: 3004, 3026, 3030, 3031, 3050, 3054, 3063, 3064, 3065+3084, 3067, 3069, 3071, 3073, 3074+3079, 3076+3094, 3077+3082, 3083, 3086, 3087, 3088, 3091, 3104, 3110, 3113, 3114, 3116, 3117

Eccles – Ashton: 3045, 3068, 3078, 3081, 3085, 3092, 3099, 3101, 3112, 3115, 3118

Media City – Ashton: 3010, 3022, 3039, 3066, 3089, 3098, 3100, 3105, 3107, 3108

Airport – Victoria: 3053, 3061, 3070, 3072, 3075, 3080, 3095, 3096, 3097, 3102, 3119

Old Trafford depot 11.00: 1020, 1023, 2001, 3011, 3034, 3047

Queen's Road depot 11.20 – 11.35: 3016, 3090, 3109

Victoria 11.45 – 12.45:

Bury – Piccadilly: 3005, 3018, 3020, 3023, 3025, 3029, 3032, 3042, 3058

Not seen: 3008, 3012, 3014, 3027, 3056, 3062, 3093, 3103, 3106, 3111, 3120

Glasgow Underground: The first of 17 new 4 car Stadler units has arrived.

London Underground: After 10 years, the final return working of LU 'S' stock to West Ruislip from mods at Derby Litchurch Lane took place on the 15th June 2019 with 20901 + 20905 t&t 66787
The hire of all 8 CI.20s to GBRf has now ceased.

CAF has been awarded the contract to supply a new fleet of 43 x 5 car driverless automatic trains for DLR. Due in service by 2023, 33 units will replace the older designs.

FREIGHT MATTERS

*To allow members to keep their copy **UK Wagons** as up to date as possible, changes are provided via this spot every month. Please let Trevor Roots know if you have any amendments or wish pass on any other helpful wagon information, contact details on page 2.*

UK Wagons 2019 Further updates since release shown below.

also see **EASTLEIGH WORKS REPORT** for further updates. Thanks to the following for information: Alex Ford, Alan Hardcastle, Derek Everson, Steve Gillam

Amendments:

p69 81.70.7829.000-1 is missing from list and 005-1 should be 005-0

p109 Internal User number for 200406 should be 024988

Out of Store: 92638, 320013/19/50/58/59/63, 370124/166/208, 500039, 910304, 996929

Converted: RBA Barrier Wagon 33.70.9382.000-5

HYA Bogie Coal Hopper shortened to **HYA Bogie Aggregates Hopper** 371004/07/10/15/18/21/23/26/30/35/40/47/83/98/99, 371100/06/22

A further batch of **JSA Bogie Enclosed Steel Carriers** are being converted to **JSA Bogie Open Steel Carriers** by the removal of the telescopic hood (see **EASTLEIGH WORKS REPORT**)

Reclassified: YWA 997006

Removed from TOPS / For Scrap / Scrapped: 14761/62/67/75/77/79/80/82/85/94/97/99, 14807/09/17/18/20/23/30/36/37/38, 60772, 100033/45/70, 110271/386/472, 200725, 210393, 310198/207/403/511/553/590/636/661/717/759, 391347/5262/5323/5369, 460275, 470052, 609011/28/30/32-34/50/63/74/78/81/98, 621459/464/496/527/903/904, 967507/17/62/84/87

Preserved: 110247, 901017 to EOR from East Wimbledon EMU Depot

OTP NEWS:

Exported: DR 76323/24, DR 76702/10/11, DR 92264

Stored: DR 76701

STOCK CHANGES

*It is hoped that all major changes recorded below will help you keep the **UK Combine**, **UK Pocket Book**, **UK Locomotives** and **UK Name Directory** up to date, (numerous pool code changes will not be recorded). In order to compile as accurate and up to date list as possible, can members please pass on their observations, particularly name changes and multiple unit reformations to the editor, **Trevor Roots**. Where possible, photos of new nameplates will be included as and when a suitable photo is sourced from members.*

Misc. News:

08757 has gone on temp hire to FX until a RSS shunter becomes available
All the DRS Cl.20/3s are now at BH
37188 is to scrapped on completion of component recovery
47828 has returned to the mainline
DBC has put its Cl.59/2 fleet up for sale
More special customer liveries have emerged on FI 66587 & GBRf 66747
European 66997 has shipped back abroad with no more scheduled to arrive
92006 returned to service after 13 years dormant
All Cl.150/1s are now operated by Northern
Cl.195s started in service on the 1st July
55009, 51942 + 56270 have been put up for sale from MNR
720501 the first GA Cl.720 has arrived at Old Dalby

As I have been overwhelmed with changes updating the **UK Combine & UK Pocket Book** for the **Summer Editions** the many amendments that have occurred since the June issue or previously missed are not shown here but are all in the new books. The following are new updates since the 1st July cut off date. To provide continuity in reporting new names those already in the books are however shown as highlighted in yellow.

New:

EMUs:

385121, 397005, 755328/423/424, 802209/10

Coaches: MK5 11507, 12719-21, 12807

Transferred / (Stored): (* preserved)

D&E Locos: 08375 BOS 08613 WO

08663* AVR 08788 PDP 08939 FX

09015* AVR 37667 (CD)

Steam: 65033 GCR

EMUs: 317501 (ZK) 365519/29 (CY)

345061 (WK) 710117 (OD) 710119 (WK)

Coaches:

Mk2 5961/6054/6158/9520 CF

Mk3 HST 42019/034/184/275/345/571 IS

40900/04, 41160/67 PM, 42261 (ZK)

42021/044/557 (ZB)

47033/55/57, 41018/89, 42039/067/283/361,

42504/09/69/81, 44013/59 (EY)

Mk4: 10317, 11329/429/998, 12204/321/438/457/62 (WK)

Mk3 DVT: 82231 (WK)

DMUs: 51354 PS

EMUS: 70824/76298 SWG

314207/15 (YO), 365509/13 (CY), 365541 (IL)

319422/35/45/47/59 (ZN), 319423/39 RG

Re-numbered: 08737 to D3905

Steam Status: 1054 to O 65033 to O

For Scrapping / Scrapped:

Sims, Newport 313025/36/38/40/53/54

Names:

New: (* re-applied)

195117 *Proud To Be Northern*

331106 *Proud To Be Northern*

43198 *Driver Stan Martin 25 June 1950 – 6 November 2004 / Driver Brian Cooper 15 June 1947 – 5 October 1999 (trs from 43139 & 43033)*

56091 *Driver Wayne Gaskell The Godfather*

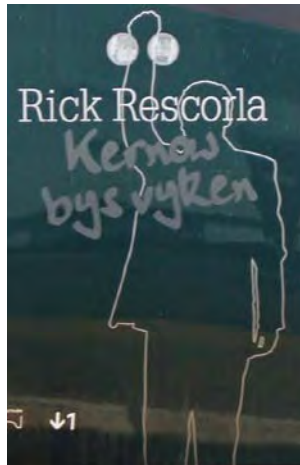
66162 *Maritime Intermodal Five*

66747 *Made in Sheffield*

66780 *The Cemex Express*

68029 *Courageous*

221116 *City of Bangor / Dinas Bangor*



802008 reported May 2019 (Colin Pidgeon)

Proud To Be Northern

331106 (Neil Dix)



66780 (Harold Hull)



66780 (Keith Partlow)



800306 (Graham Stockton)

the other power with twin names was shown in
Nov & Dec 2018 issues

Not Previously Illustrated:



66735 reported May 2019 (Graham Stockton)



66047 reported Apr 2019 (David Doulton)



68031 reported Mar 2019
(Lawrence McCormick)



68032 reported Mar 2019
(Lawrence McCormick)



D1924 reported Oct 2018 (Spencer Conquest)



99993 reported May / Jun 2018



3384 reported Sep / Oct 2017

Removed:

08663	Jack
43053	University of Worcester
43185	Great Western
43198	Oxfordshire 2007
47715	Waverley
156441	William Huskisson MP
313054	Captain William Leefe Robinson V.C.
333011	Olicana Ilkley's Roman Fort
390103	Virgin Hero

My intention is to retrospectively illustrate all names applied as listed in our **NAME DIRECTORY** at least from when I took over as Editor in Dec 2006. I am initially covering names back to Jan 2011 and the following is now a revised updated list of names I have not yet got. Please note I only want photos of nameplates in focus, straight and centred side on so be aware of the sloping sides of Cl.91s, Voyagers, Pendolinos etc. Photos supplied of those requested will be shown as and when space permits. (* re-applied, \$ temporary, # transferred) (~ not straight / square on, + too reflective)

D&E Locos:

01521	FLACK ~
08611	Longsight TMD
08641	Pride of Laira
08648	Amanda
08790	M.A.Smith
08908	Tim Shoveller
33021 *	Eastleigh (previously carried)
37407	Blackpool Tower
45133 \$	Brian Lockey (one side only)
	Gerald Lambert (one side only)
56091	Driver Wayne Gaskell The Godfather
60002	Tempest
60019	Port of Grimsby & Immingham
60026	Jupiter

60087	Bountiful
60096	Impetus
66109	Teesport Express
66734	The Eco Express
66162	Maritime Intermodal Five
66747	Made in Sheffield
66758	The Pavior
68026	Enterprise
68029 ~	Courageous
88007	Electra
97302	Ffestiniog and Welsh Highland Railways / Rheilffrd Ffestiniog ac Eryri

DMUs:

51616	ALF BENNEY ~
-------	--------------

156483 William George 'Billy Hardy'
14/01/1903-10/03/1950

DEMUS:

221116 City of Bangor / Dinas Bangor

EMUs:

378135 Daks Hamilton

390115 Crewe - All Change with Alison on cab noses

395013 HORNBY Visitor Centre Margate, Kent

399202 Theo – The Children's Hospital Charity

Track Machines:

DR 73113

Dai Evans +

DR 73939

Pat Best

DR 77001

Anthony Lou Phillips

DR 79247

Roger South

DR 98923+98973

Chris Lemon

Coaches:

348 TOPAZ

3229 SNOWDON

3426 BEN NEVIS

NEW STOCK

Though in the past I have attempted to individually show all new stock, with the flood of new stock recently delivered and proposed over the next few years and less pages to work with, it is now impractical to do so. I will continue however to show all new locos and smaller classes of units and coaches but I will only show a representative selection of the latter types, particularly from as many different members / different locations as possible or to illustrate a comparison. So if a particularly unit has not been shown but you photograph it in a more 'unusual' location within a reasonable time of it entering service then I will try to include it.



left 195121 to
Windermere,
Manchester Airport
(08.27)
8th July 2019
(Paul Rosser)

Cl.195s & Cl.331s are now in service

right 195116 Crewe (10.11)
7th July 2019 (Spencer Conquest)

below 333106 sporting its new name,
Doncaster (14.27) 29th June 2019
(Neil Dix)



TRANSFERS

due to lack of space at Crewe, ten LSL coaches have moved to Rowsley South, Peak Rail for storage, of interest is that they carry six different liveries, 16th June 2019

right Mk1 21268



above Mk2 5797 + 3295 + Mk1 3091 + 5054

right Mk1 3107 & 3140



left Mk2 13508

below right Mk1 RBR 1679

below left 3277



right still in RHTT 'livery' 20305 + 20302 + 20303 have been moved to BH meaning all DRS Cl.20/3s are now on site, 16th June 2019

below moved from Southall, 0-6-0PT 9682 is now at Norchard, DFR, 13th June 2019



below recently transferred to LSL, Mk3 11074 Nemesis Rail, 16th June 2019



moved from the closed Electric Railway Museum, Coventry 960101 (309616) is now based at Nantmawr, TAN, 9th June 2019



61937 (977963)



above AVR has gained another two shunters with *top* the derelict 09015 acquired from Rye Farm, Wishaw as seen on the 10th July 2019 and *middle* 08663 as seen on the 8th July 2019, Bitton, AVR (Paul Normanton)

it was donated by GWR minus nameplates after its services were no longer needed with the closure of Landore Depot and the replacement of most HSTs

left 08632 Eastleigh (09.20) 25th June 2019 (Derek Everson)

LIVERIES

*This section will endeavour to show all new liveries / variations or those existing ones where not carried on the stock before. Liveries that become 'extinct' will also be covered. As with names, it may take a while after the livery application before a photo is sourced from members. New liveries may also be shown in other articles: 43423 & 47841 **LSL OPEN DAY REPORT**, 319454 & 799001 **TECHNOLOGY NEWS**.*



above 350375 has received a pride rainbow and
middle Madame Tussauds advert
on 60658 (350375) promoting
the use of London Euston,
Northampton (10.21)
2nd July 2019 (Graham Stockton)
right 66587 on 4L38 Wentloog -
Felixstowe, Swindon (12.40)
13th June 2019 (Colin Pidgeon)



AS ONE, WE CAN

ICRS SALES

For info on our range of Books and Sundries see below or visit our website. Orders can either be:

ideally via BACS, bank details on request from editor@intercityrailwaysociety.org

online via PayPal at www.intercityrailwaysociety.org

or by post from **ICRS, Mill of Botary, Cairnie, Huntly Aberdeenshire AB54 4UD**

Please make cheques payable to **ICRS**. P&P is **FREE** to the **UK** for orders over

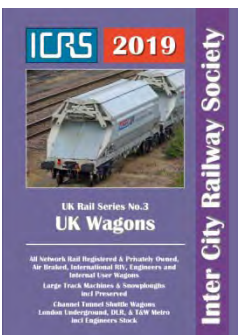
£8.00, otherwise add £1.50. Postage to rest of the world will be extra.

As volunteers we do our very best to dispatch items as soon as possible, but please allow 14 days for delivery, especially when a new book has just been released, or 28 days for embroidered clothing if not in stock.

If you have not received your book after that time please **ONLY** then contact

Trevor / Christine (see p2 for details)

UKRS01 & UKRS05 are A6 size, all others are A5 size. All books are wire bound, allowing them to be laid flat, except the original perfect bound version of **UKRS01**



BOOKS: (Members receive up to 30% discount on ICRS books)

Titles:		Size	Updated to	Member	Non- Member
NEW:					
UKRS01B	UK Pocket Book Summer Ed 2019 (spine)	A6	1 st Jul19	£8.00	£11.00
UKRS01WB	UK Pocket Book Summer Ed 2019 (wire)	A6	1 st Jul19	£8.00	£11.00
UKRS02B	UK Combine Summer Ed 2019	A5	1 st Jul19	£12.50	£17.00
OTHERS: (* to remain in print for next few years)					
UKRS03	UK Wagons 2019	A5	18 th Feb19	£10.00	£13.50
UKRS04	UK Name Directory	A5	28 th Jan19	£11.00	£15.00
UKRS05	UK Locomotives 2019	A6	28 th Jan19	£4.50	£6.00
UKRS10*	Ultimate Sighting File	A5	11 th Jul18	£11.00	£15.00
UKRS11*	Vol.1 – Mainline Diesel Locos	A5	11 th Jul18	£10.00	£13.50
	Ultimate Sighting File				
	Vol.2 – Shunters, Mainline Electric & Prototype Locos				

SUNDRIES: (please add £1.50 P&P for orders under £7.99 in total)

ICRS branded notebook – 75 pages		£2.50
ICRS branded notebook – 50 pages		£2.00
ICRS pin badge		£2.50
ICRS printed pen		£0.50
Pocket Book cover (for original version only with spine)		£1.50
TRACKS A5 Cordex binder (12 issues @ 48 / 64 pages: 2014-16)	LARGE	£5.00
TRACKS A5 Cordex binder (12 issues @ 32 / 40 pages: 2011-13 & 64 pages: 2017)	MEDIUM	£5.00
Polo Shirts: (name & logo) (S / M / L / XL / XXL / 3XL / 4XL)		
(S / M / L / XL / 2XL / 3XL) BLACK / DARK NAVY / NAVY / BURGUNDY / BOTTLE GREEN		£20.00
(4XL) BLACK / NAVY / BOTTLE GREEN		£20.00
Baseball Caps: BLACK / NAVY / BURGUNDY		£12.00

We still have a supply of the original polo shirts in NAVY & WHITE with logo only which can be bought direct from our sales stand for £7.50 / £5.00

Details of books and sundries can be found on our website and are shown in **TRACKS** from time to time when released or advertised. Order forms for posting can be downloaded from the website.